



AUCTION SERVICE

Versprille Carnival Glass Auction

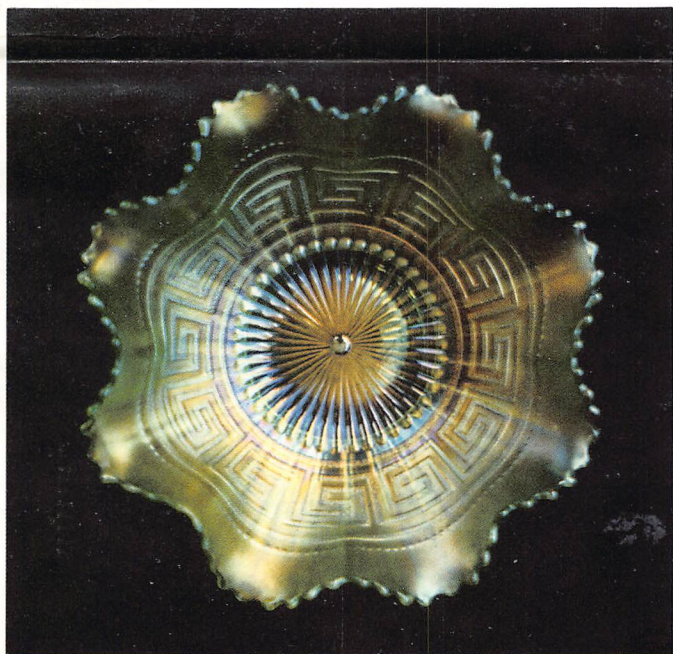
Friday & Saturday,
November 19 & 20, 1993

6:00 pm, Friday, Lots 1 - 160, 4:00 pm preview
9:30 am, Saturday, Lots 161 - end,
8:00 am preview

at the **Ramada Inn - Shenango**

Rte. 18 N, W. Middlesex, PA 16559
(Exit 1N off I-80 right near the Ohio border)

(412) 528-2501



Tom Burns
109 E. Steuben St.
Bath, New York 14810
(607) 776-7942

Bill Richards
44 Water St.
Poland, Ohio 44514
(216) 757-2001

Bill Richards III
524 Poland Ave.
Struthers, Ohio 44471
(216) 755-2620

Selling at auction the collection of Leonard and Delores Versprille from Rochester, NY. These folks were active 10 - 20 years ago and found many of their items locally and at Flea Markets such as Brimfield. They found a large number of pieces throughout the years including some super rarities. Again, something for everyone! Hope to see ya there!

The Ramada Inn of West Middlesex, Pa, will host the event. The motel is located right off Exit 1N of I-80 on the north side - really easy to find. You may make your reservations by calling the motel direct at (412) 528-2501. Be sure to mention Burns Auction Service.

Mail Bids due by Thursday, November 18, 1993.

Mail Bids honored under the following conditions:

1. No deposit required. Bidders will take full responsibility to honor any and all bids we execute for them. Payment in full plus postage and handling required after notification and before we ship any item to them.
2. **Items are bid on in perfect condition with average or above average iridescence OR as listed in the brochures. Bids will not be carried out when damage on an item has been found during the auction.**
3. Successful bidders will be notified by collect call from the auctioneer **(so be sure to include phone number)**.
4. Phone inquiries about the glass or any other questions are welcome.
5. All non-successful will receive a result summary in the mail. Results of all bids will be provided.
6. If you have some other person at the auction bidding for you, they must pay for the item before taking it.
7. Mail bids due by Thursday, November 18, 1993

- | | | | |
|-----------|--|-----------|--|
| _____ 1. | Pastel Swan - Celeste Blue (chipped on wing) | _____ 26. | N FINE CUT AND ROSES FTD. ROSE BOWL WITH-
OUT COLLAR BASE - ODD GREEN (EXTREMELY
RARE VARIATION; ODD TINT; VERY SMALL SLIVER
ON ONE FOOT) |
| _____ 2. | Pastel Swan - Pink (chipped on wing) | _____ 27. | N Daisy and Plume 3 ftd. Rose Bowl with Berry Interior -
Pur. (very scarce; nice color; roughness on one foot) |
| _____ 3. | Pastel Swan - Ice Green | _____ 28. | N Daisy and Plume 3 ftd. Rose Bowl with Berry Interior -
Mari. (scarce; has been smoothed on top of one foot) |
| _____ 4. | Pastel Swan - P. Opal. (very scarce; opal. on head;
chipped on tail) | _____ 29. | N Daisy and Plume 3 ftd. Rose Bowl with Stippled Rays In-
terior - Green (scarce; has a chip or 2 on feet) |
| _____ 5. | Imperial Daisy Handled Flower Basket - Smoke (very
scarce; tough color to find) | _____ 30. | N BEADED CABLE FTD. ROSE BOWL - ICE BLUE
(VERY RARE ITEM; NICE COLOR AND IRID.) |
| _____ 6. | (2) Imperial Waffle Block Handled Flower Baskets - Pas-
tel Mari. (selling choice) | _____ 31. | N BEADED CABLE FTD. ROSE BOWL - AQUA OPAL.
(VERY SCARCE AND DESIRABLE; NICE COLOR AND
OPAL.) |
| _____ 7. | Dugan Tree of Life Small Handled Flower Basket - Mari. | _____ 32. | N BEADED CABLE FTD. ROSE BOWL - EMERALD
GREEN (REGARDLESS OF WHAT SHADE YOU CALL
IT - THIS IS ONE OF THE FINEST EXAMPLES I'VE
SEEN) |
| _____ 8. | (3) Dugan Miniature Handled Flower Basket - Mari. (2
damaged; selling as one lot) | _____ 33. | N Beaded Cable ftd. Rose Bowl - Blue (scarce color; a bit
silvery) |
| _____ 9. | (2) Dugan Basketweave Handled Flower Baskets -
Mari. (one tall; one flared - selling choice) | _____ 34. | N Beaded Cable ftd. Rose Bowl - Pur. (nice dark color with
even irid. - very nice) |
| _____ 10. | DUGAN STORK AND RUSHES HANDLED FLOWER
BASKET - MARI. (VERY SCARCE PATTERN IN THIS
SHAPE; NICE) | _____ 35. | N Beaded Cable ftd. Rose Bowl - Pur. (scarce; nice color
and irid.) |
| _____ 11. | 11 1/2" Heisey Type Wide Panel or "Plain Jane" Large
Handled Flower Basket - Lt. Mari. (very scarce; nice size
and irid.) | _____ 36. | N Beaded Cable ftd. Rose Bowl - Dk. Mari. (scarce; very
nice irid. with pink highlights) |
| _____ 12. | 8" N Bullseye and Leaves Ruffled Bowl - Green
(chipped on base) | _____ 37. | N DRAPERY ROSE BOWL (SQUATTY) - WHITE (VERY
SCARCE AND DESIRABLE; PINK HIGHLIGHTS;
NICE) |
| _____ 13. | N Wide Panel Table Set Creamer only - Mari. | _____ 38. | N Daisy and Drape ftd. Turned in Vase - White (badly
cracked) |
| _____ 14. | N Wide Panel Table Set Covered Sugar Bowl - Mari. | _____ 39. | N DAISY AND DRAPE TURNED IN FTD. VASE - MARI.
(VERY SCARCE AND VERY DESIRABLE; NICE CO-
LOR) |
| _____ 15. | N ROUND BUSHEL BASKET - SAPPHIRE
BLUE (SUPER RARE; GREAT BASE CO-
LOR WITH A TOUCH OF SILVER IRID.) | _____ 40. | N DAISY AND DRAPE FLARED FTD. VASE - AQUA
OPAL. (RARE ITEM; OPAL. ON EDGE; HAS ODD
FLARE) |
| _____ 16. | N Round Bushel Basket - Blue (very scarce; really nice
irid.) | _____ 41. | N DAISY AND DRAPE FLARED FTD. VASE - BLUE
(VERY RARE ITEM; NICE DARK BASE COLOR; SIL-
VERY) |
| _____ 17. | N Eight Sided Bushel Basket - Mari. (very scarce; nice
color) | _____ 42. | 7 - 7 1/4" N Fine Rib Swung Vase - Mari. |
| _____ 18. | N Ribbed Jester's Cap Jack in the Pulpit Vase - Pur.
(very scarce; nice color) | _____ 43. | N Jester's Cap Jack in the Pulpit Ribbed Vase - Dk. Mari.
(super, super color and irid.) |
| _____ 19. | N Ribbed Jester's Cap Tri-Cornered Vase - Green (odd
shape; scarce; has manuf. mark on edge) | _____ 44. | 11 1/2" N Thin Rib Swung Standard Size Vase - Pur. |
| _____ 20. | N FINE CUT AND ROSES FTD. ROSE BOWL
WITH FANCY INTERIOR - AQUA OPAL.
(SUPER, SUPER RARE WITH PERFECT
FEET; NICE OPAL. WITH A TOUCH OF BUT-
TERSCOTCH - SUPER) | _____ 45. | 13" N TREE TRUNK MID SIZE FUNERAL
VASE - ICE GREEN (ABSOLUTELY FANTAS-
TIC; SUPER COLOR AND GREAT IRID.) |
| _____ 21. | N FINE CUT AND ROSES FTD. ROSE BOWL WITH
FANCY INTERIOR - ICE BLUE (VERY DARK WITH
EXCELLENT MULTI-COLORED IRID. - REALLY
NICE) | _____ 46. | 13" N Tree Trunk Mid size Vase - Pur. (very scarce and
desirable; super color and nice) |
| _____ 22. | N Fine Cut and Roses ftd. Rose Bowl - Green (super co-
lor; feet have been ground down) | _____ 47. | 13" N Tree Trunk Mid size Vase - Pur. (satiny finish; chip
on top of one point) |
| _____ 23. | N Fine Cut and Roses ftd. Rose Bowl - Dk. Mari.
(scarce; nice pink and blue highlights) | | |
| _____ 24. | N Fine Cut and Roses ftd. Rose Bowl - Mari. (nice color;
feet have a few chips) | | |
| _____ 25. | N Fine Cut and Roses ftd. Rose Bowl - Pur. (nice aver-
age color; a bit silvery on one side) | | |

48. 13" N Tree Trunk Mid size Vase - Dk. Mari. (very desirable; nice and dark top to bottom)
49. 13 1/2" N Tree Trunk Mid size Vase - Mari. (scarce; nice color and irid.; bruised near base)
50. **10 1/2" N TREE TRUNK STANDARD SWUNG VASE - ICE GREEN (VERY DESIRABLE; NICE COLOR AND IRID.)**
51. 11 3/4" N Tree Trunk Standard Swung Vase - Green (super, super color and irid.)
52. 10 3/4" N Thin Rib Standard Swung Vase - Sapphire Blue (very rare and desirable color; small chip on base)
53. 13 1/4" N Thin Rib Mid size Swung Vase - Dk. Mari. (really nice color and irid.)
54. 13" N Thin Rib Mid size Swung Vase - Mari. (scarce; nice color)
55. **11" N LEAF COLUMNS STANDARD SWUNG VASE - LIME ICE GREEN (RARE AND VERY DESIRABLE PATTERN; PERFECT AND NICE)**
56. **8" N DIAMOND POINT SWUNG VASE - ICE GREEN (VERY RARE BUT HAS MANUF. ROUGHNESS ON EDGE)**
57. 13" N Tree Trunk Mid size Swung Vase - Pur. (satiny finish; scarce)
58. 12" N Tree Trunk Standard Standard Swung Vase - Blue Opal. (not Carnival; nice color and opal.)
59. 10 3/4" N Tree Trunk Standard Swung Vase - Blue Opal. (not Carnival; light opal.; dark base color)
60. 13" N Thin Rib Mid size Swung Vase - Pur. (nice color and irid.; very scarce; tiny, tiny cinder mark)
61. 11 1/4" N Thin Rib Standard Swung Vase - Elec. Blue (scarce; nice color)
62. 11" N Thin Rib Standard Swung Vase - Olive Green
63. 15 1/2" N Wide Panel Mid size Swung Vase - Mari. to Clear (nice large item; very impressive)
64. N G & C Ruffled Hat Shape - Mari.
65. **N G & C CANDLE LAMP WITH SHADE - DK. MARI. (RARE & VERY DESIRABLE; NICE COLOR AND IRID.)**
66. N G & C Candlestick - Mari. (nice color; flat flake on top edge)
67. N G & C Punch Cup Whimsey Pin Tray - Mari.
68. N G & C Variant Plate with Basketweave Exterior - Mari.
69. N G & C Variant Bowl with Pie Crust Edge and Basketweave Exterior - Dk. Mari.
70. N G & C Variant Ruffled Bowl with Basketweave Exterior - Mari.
71. **N G & C FTD. HATPIN HOLDER - GREEN (VERY SCARCE; SATINY FINISH; PERFECT)**
72. **N G & C FTD. HATPIN HOLDER - PUR. (VERY SCARCE; PRETTY NICE COLOR AND IRID.)**
73. N G & C Covered Powder Jar - Pur. (very scarce; lid has minor roughness)
74. (3) N G & C Candlesticks - Pur. (very desirable; selling choice)
75. N G & C Small size ftd. Fruit Bowl - Pur. (scarce; nice color and irid.)
76. N G & C 2 Handled Bon Bon with Basketweave Exterior - Elec. Blue (very nice color and irid.; scarce)
77. N G & C Variant Ruffled Bowl with Plain Exterior - Pur. (a beaut; super multi-colored irid.)
78. N G & C Variant Ruffled Bowl with Plain Exterior - Pur. (super color and irid. with blue highlights; has straw mark)
79. N G & C Variant Ruffled Bowl with Plain Exterior - Pur. (very nice color and irid.)
80. **9 1/2" N G & C STIPPLED 8 RUFFLED BOWL WITH BASKETWEAVE EXTERIOR - PUR. (VERY SCARCE; NICE COLOR)**
81. N G & C Bowl with Pie Crust Edge and Basketweave Exterior - Pur. (desirable; nice color; large chip on edge)
82. N G & C Bowl with Pie Crust Edge and Basketweave Exterior - Odd Amy. (scarce tint; satiny)
83. N G & C Variant Ruffled Bowl with Basketweave Exterior - Pur.
84. N G & C Ruffled Bowl with Basketweave Exterior - Green
85. N G & C Spooner - Pur. (super, super irid.; has some minor wear on thumbprint)
86. N Wishbone Large 8 Ruffled Bowl with Basketweave Exterior - Pur. (scarce)
87. N Wishbone ftd. Ruffled Bowl with Ruffles and Rings Exterior - Pur. (nice color and irid.)
88. N Wishbone ftd. Ruffled Bowl with Ruffles and Rings Exterior - Mari. (really nice irid.; bright yellows and blues)
89. **N GOOD LUCK BOWL WITH PIE CRUST EDGE AND RIBBED EXTERIOR - DK. MARI. (ABSOLUTELY SUPER DARK COLOR AND IRID.; REALLY NICE)**
90. **N DANDELION 7 PC. TANKARD WATER SET - GREEN (SUPER RARE SET WITH EXCELLENT IRID.; ONE TUMBLER IS CRACKED)**
91. N Stippled Singing Bird Mug - Mari. (very scarce; very nice color and irid.)
92. N Singing Bird Mug - Dk. Mari. (super color and irid.; really nice)
93. N Singing Bird Mug - Pur. (super color and irid.)
94. N Lattice and Poinsettia ftd. Ruffled Bowl with Ribbed Exterior - Ice Blue (broken and reglued but a really great example)
95. **N STRAWBERRY STIPPLED RUFFLED BOWL WITH RIBBED EXTERIOR - PASTEL MARI. (SCARCE WITH NICE SOFT PASTEL IRID.)**
96. N Strawberry Plate with Plain Exterior - Amy. (very scarce; good to fair irid.)
97. N Strawberry Bowl with Pie Crust Edge and Basketweave Exterior - Green (scarce; nice color)
98. N Strawberry Bowl with Pie Crust Edge and Basketweave Exterior - Mari.
99. **N PEACOCKS PLATE WITH RIBBED EXTERIOR - AMY. (SUPER IRID.; WITH GOLDISH EDGE; SILIGHT ODD TINT)**
100. **N GREEK KEY RUFFLED BOWL WITH RIBBED EXTERIOR - ICE GREEN (YES FOLKS, WE SAID ICE GREEN; NEVER SEEN ONE BEFORE - NEVER DREAMED OF ONE BEFORE)**
101. N Greek Key Ruffled Bowl with Basketweave Exterior - Green (scarce; very nice satiny finish)
102. N Greek Key Ruffled Bowl with Basketweave Exterior - Pur. (very scarce; nice low ruffle; good color; pinhead)
103. N Greek Key Ruffled Bowl with Basketweave Exterior - Pur. (very scarce; nice)
104. **N HEART AND FLOWERS STEMMED RUFFLED COMPOTE - AQUA OPAL. (VERY SCARCE; NICE BUTTERSCOTCH FINISH; MINOR ROUGHNESS ON BASE)**
105. **N HEART AND FLOWERS RUFFLED BOWL WITH RIBBED EXTERIOR - AQUA / MARI. (EXTREMELY RARE COLOR FOR THIS ITEM; NICE COLOR AND DARK MARI. OVERLAY; HAS A TINY BIT OF MINOR PEELING)**
106. **N HEART AND FLOWERS BOWL WITH PIE CRUST EDGE AND RIBBED EXTERIOR - MARI. (SUPER SCARCE ITEM; NICE COLOR AND PERFECT)**
107. **N EMBROIDERED MUMS RUFFLED BOWL WITH RIBBED EXTERIOR - PUR. (SUPER COLOR AND IRID.; VERY DESIRABLE; HAS ONE TINY ROUGH SPOT ON ONE POINT)**
108. N Embroidered Mums Ruffled Bowl with Ribbed Exterior - Mari. (very scarce; very nice; chip on one point)
109. **N ROSE SHOW VARIANT RUFFLED BOWL WITH RIBBED EXTERIOR - RENNINGER BLUE (VERY RARE AND DESIRABLE; HAS GOLD, SILVERY IRID.; A SHARP POINT)**
110. N Rose Show Ruffled Bowl - Aqua Opal. (rare and desirable; super irid.; large chip on base)
111. N Rose Show Ruffled Bowl - Dk. Mari. (very scarce; nice color and irid.; chip on base)
112. N Wild Rose ftd. Deep Candy Dish - Green
113. N Wild Rose ftd. Flared Candy Dish - Blue Opal. (not Carnival; very unusual color for this item)
114. N Three Fruits domed Ruffled Bowl - Dk. Mari. (nice dark color and irid.)

115. **N THREE FRUITS STIPPLED PLATE WITH RIBBED EXTERIOR - MARI. (VERY SCARCE; NICE COLOR AND PRETTY FLAT)**
116. N Three Fruits Plate with Basketweave Exterior - Mari. (scarce; nice color)
117. N Three Fruits Plate with Basketweave Exterior - Green (scarce)
118. N Three Fruits Bowl with Pie Crust Edge and Basketweave Exterior - Pur. (scarce; large chip off edge)
119. N Three Fruits Bowl with Pie Crust Edge and Basketweave Exterior - Dk. Mari. (scarce)
120. N Three Fruits 8 Ruffled Bowl with Plain Exterior - Pastel Mari. (scarce color; very nice multi-colored irid.)
121. N Three Fruits Ruffled Bowl with Plain Exterior - Dk. Mari.
122. N Grape Leaves Ruffled Bowl - Pur. (nice color)
123. N Sunflower ftd. Ruffled Bowl with Meander Exterior - Green (nice color; has some water stains)
124. N Sunflower ftd. Ruffled Bowl with Meander Exterior - Mari. / Green
125. **N POPPY RELISH TRAY - ELEC. BLUE (SCARCE; REALLY BRIGHT IRID.; NICE)**
126. N Poppy Relish Tray - Mari. (very scarce; nice satiny finish)
127. N Raspberry ftd. Gravy Boat - Pur. (very scarce; large chip on one foot)
128. **N BUTTERFLY 2 HANDLED BON BON WITH SPIRAL EXTERIOR - ELEC. BLUE (VERY RARE; NICE BRIGHT IRID.; TOUGH TO FIND)**
129. **N BUTTERFLY 2 HANDLED BON BON WITH SPIRAL EXTERIOR - DK. MARI. (VERY RARE; VERY TOUGH COLOR FOR THIS ITEM)**
130. N Butterfly 2 Handled Bon Bon with Plain Exterior - Pur. (nice color)
131. N Butterfly 2 Handled Bon Bon with Plain Exterior - Green (very nice example)
132. N Butterfly 2 Handled Bon Bon with Plain Exterior - Green (nice gold irid.)
133. N Three Fruits Medallion ftd. Ruffled Bowl with Meander Exterior - Aqua Opal. (rare; has fingernail size chip on edge)
134. (2) M'burg Cosmos Small Ice Cream Shaped Bowl - Green (radium; pretty one is chipped - silvery one OK)
135. **10" M'BURG LITTLE STARS LARGE ICE CREAM BOWL WITH PANELLED EXTERIOR - BLUE (EXTREMELY, EXTREMELY RARE, ONE OF A KIND; SILVERY NEAR THE CENTER TO A NICE SATINY FINISH ON THE EDGE: BASE IS ROUGH BUT I DARE YOU TO FIND ANOTHER!)**
136. 8" M'burg Little Stars Ruffled Bowl - Amy. (satiny; nice color and irid.; very scarce)
137. 8" M'burg Little Stars Ruffled Bowl - Mari. (satiny; very nice finish and irid.; scarce)
138. **M'BURG SWIRL HOBNAIL ROSE BOWL - MARI. (VERY SCARCE; PERFECT AND NICE FINISH)**
139. 7 - 7 1/2" M'burg Grape Wreath Bowl with 3 in 1 Edge - Amy. (super radium finish)
140. **M'BURG FLEUR DE LEI DOMED BOWL WITH 3 IN 1 EDGE - AMY (SUPER RADIUM FINISH; GREAT COLOR; MINOR FLAKE ON ONE POINT OF BASE)**
141. **10 1/4" M'BURG FLEUR DE LEI 6 RUFFLED BOWL - AMY. (RADIUM FINISH; HAS GOLD / SILVER FINISH; VERY SCARCE)**
142. 9 1/2" M'burg Fleur de Lei Ice Cream Shaped Bowl - Mari. (radium; subdued multi-colored irid.; very scarce; chipped on edge)
143. 9 1/2" M'burg Primrose 6 Ruffled Bowl - Green (radium; super color and irid.)
144. 9 1/2" M'burg Primrose 6 Ruffled Bowl - Mari. (radium; super multi-colored irid.; really nice)
145. **10 1/2" M'BURG PEACOCK AT THE URN LARGE 6 RUFFLED BOWL - LT. MARI. (RADIUM; HAS BEE BUT NO BEADING; SUPER FINISH)**
146. **M'BURG NESTING SWAN 6 RUFFLED BOWL - AMY. (SATINY FINISH; NICE IRID.; SMALL SPOT ON WING WHERE IRID. DIDN'T TAKE)**
147. **8" M'BURG HOLLY SPRIG TRI-CORNERED BOWL - AMY. (SUPER RADIUM FINISH - GREAT COLOR)**
148. 9 3/4" Whirling Leaves 6 Ruffled Bowl - Amy. (satiny; nice irid.)
149. M'burg Boutonere Stemmed Ruffled Compote - Green (radium finish; a super example)
150. **10 1/4" M'BURG SEAWEED LARGE BOWL WITH 3 IN 1 EDGE - MARI. (SUPER SATINY FINISH; MAY HAVE A SMALL BIT OF PEELING ON EDGE)**
151. **9 1/2" M'BURG STRAWBERRY WREATH LARGE ICE CREAM SHAPED BOWL - MARI. (RADIUM; VERY NICE COLOR AND IRID.; SUPER)**
152. 9 3/4" M'burg Blackberry Wreath Large Ice Cream Shaped Bowl - Mari. (scarce; pattern faded just a bit)
153. 8" M'burg Blackberry Wreath 6 Ruffled Bowl - Green (satiny; nice)
154. 9" M'burg Blackberry Wreath 6 Ruffled Bowl - Amy. (satiny; scarce; a bit silvery in the center)
155. 8 1/2" M'burg Blackberry Wreath 6 Ruffled Bowl - Amy. (super radium; really nice)
156. 8 1/2" M'burg Grape Wreath Bowl with 3 in 1 Edge - Mari. (radium and very scarce)
157. M'burg Holly Sprig One Handled Tri-Cornered Nappy - Amy. (damaged - has 2 chips)
158. M'burg Holly Sprig 2 Handled Card Tray - Mari. (really nice radium finish; may have a pinhead)
159. M'burg Holly Sprig 2 Handled Deep Bon Bon - Mari. (nice; has a chip on back of edge)
160. M'burg Peacock Tail Variant Ruffled Compote - Amy. (super radium; has chip on base)

START OF SECOND SESSION

161. M'burg Peacock Tail Variant Ruffled Compote - Green (satiny finish; very nice example)
162. 6 1/2" Cambridge Inverted Strawberry Ice Cream Shaped Bowl - Green (nice color)
163. (6) Bennett Inverted Strawberry Tumblers - Odd Blue (newer; selling the set as 1; one tumbler has small chip)
164. **CUT COSMOS TUMBLER - DK. MARI. (VERY RARE WITH EXCELLENT COLOR)**
165. **DUGAN VINTAGE BANDED PEDESTALED WATER PITCHER AND 6 MUGS - MARI. (EXTREMELY RARE PITCHER IN THIS PATTERN; SUPER RARE; NOT MANY KNOWN; SOLD AS A 7 PC. SET)**
166. Dugan Fishermans Mug - Pur. (silvery; scarce)
167. Dugan Stork in the Rushes Mug - Mari.
168. Dugan Leaf Ray Ruffled One Handled Nappy - Pur (very scarce shape with excellent color and irid.)
169. Dugan Leaf Ray One Handled Nappy - White
170. **11 1/2" DUGAN BIG BASKETWEAVE SWUNG VASE - SAPPHIRE BLUE (SUPER RARE COLOR BUT HAS CHIP ON ONE POINT)**
171. **10 1/2" DUGAN BIG BASKETWEAVE SWUNG VASE - ICE BLUE (VERY RARE COLOR; NICE IRID.)**
172. 10 1/2" Dugan Big Basketweave Swung Vase - White (very scarce; nice and frosty)
173. 9" Dugan Lined Lattice Swung Vase - Pur. (super, super color and irid.; a nice piece)
174. 10 1/2" Dugan Lined Lattice Swung Vase - White (nice and frosty; chip on toe)
175. **6" DUGAN TARGET SQUATTY FLARED VASE - PUR. RARE SIZE; CHIPPED ON BASE)**
176. 3 1/2" x 6 1/2" Dugan Target Variant Squatty Flared Vase - Mari. (odd size and shape; very scarce)
177. 4 1/2" x 6" Dugan Vining Twigs Short Ruffled Vase - White (nice and frosty; nice irid.)
178. Dugan Mary Ann Handled Vase - Mari. (chipped on base)
179. 6" Dugan Cherries 6 Ruffled Sauce with Jewelled Heart Exterior - Pur. (has light gold irid.)

180. **DUGAN HEAVY IRIS JACK IN THE PULPIT WHIMSEY HAT MADE FROM TUMBLER - WHITE (ONLY ONE IN THIS COLOR I'VE SEEN; A SUPER NICE ITEM)**
181. Dugan Puzzle 2 Handled Flared Bon Bon - Blue (very scarce color for this item)
182. Dugan Windflower One Handled Sauce - Mari. (scarce)
183. Dugan Six Petals Tri-Cornered Bowl - Pur. (fantastic color and irid - bright blue finish)
184. 9" Dugan Raindrops domed Ruffled Bowl with Keyhole Exterior - Pur. (scarce; satiny irid.)
185. **DUGAN QUESTION MARK DOMED PLATE WITH GEORGIA PEACH EXTERIOR - PUR. (ABSOLUTELY SUPER BRIGHT COLOR AND IRID.; REALLY NICE)**
186. Dugan Question Mark domed Ruffled Crimped Edge Compote - Mari. (scarce shape)
187. Dugan Question Mark domed Ice Cream Shaped Compote - Mari. (scarce shape)
188. Dugan Flowers and Frames domed Ruffled Bowl - Pur. (very scarce; super bright irid.)
189. 7 1/2" Dugan Flowers and Beads Exterior Plate - P. Opal. (scarce)
190. **7" DUGAN GRAPEVINE LATTICE FLAT PLATE - PUR. (VERY SCARCE; NICE MULTI-COLORED IRID.)**
191. **7" DUGAN FISHSCALE AND BEADS FLAT PLATE - WHITE (VERY SCARCE; PRETTY NICE IRID.)**
192. **9" DUGAN WINDFLOWER FLAT PLATE - BLUE (VERY SCARCE COLOR FOR THIS; NICE EXAMPLE)**
193. 9" Dugan Windflower Flat Plate - Blue (as nice as above but irid. didn't take in center)
194. 9" Dugan Windflower Flat Plate - Mari. (nice but has a chip on edge)
195. **10" DUGAN WISHBONE AND SPADES LARGE RUFFLED BOWL - PUR. (VERY SCARCE ITEM; HAS REALLY NICE MULTI-COLORED IRID.)**
196. 9" Dugan Fanciful Low Ruffled Bowl - White (scarce; one point chipped off)
197. 8 1/2" Dugan Round Up Ice Cream Shaped Bowl - Mari.
198. 8 1/2" Dugan Apple Blossom Twig Low Ruffled Bowl - Mari.
199. **DUGAN CONSTELLATION STEMMED RUFFLED COMPOTE - DK. MARI. (RARE COLOR FOR THIS PATTERN; NICE)**
200. **UNUSUAL DUGAN HONEYCOMB ROSE BOWL - CRANBERRY SPATTER WITH ORANGE FRIT - GLOSSY FINISH (VERY ATTRACTIVE AND UNUSUAL; QUITE A PIECE)**
201. Dugan Grape Delight 6 ftd. Ruffled Rose Bowl - White (very nice irid. with perfect feet)
202. Dugan Grape Delight 6 ftd. Ruffled Rose Bowl - Pur. (silvery irid. but has good feet)
203. Dugan Grape Delight 6 ftd. Ruffled Rose Bowl - Mari. (has sorta a Honey Amber cast; different)
204. Dugan Vintage Grape Covered Powder Jar - Mari. (lid doesn't fit too well; it's oblong)
205. **DUGAN WILD ROSE VARIANT 3 FTD. FLARED NUT BOWL - MARI. (VERY RARE PATTERN; ONLY A FEW FLOATING AROUND)**
206. Dugan Wreath of Roses Rose Bowl Tri-Cornered Whimsey - Dk. Mari. (super color and very unusual)
207. Dugan Wreath of Roses Rose Bowl - Mari.
208. 11 1/2" Dugan Pulled Loop Swung Vase - Mari.
209. 10 1/2" Dugan Target Swung Vase - Mari.
210. 10 3/4" Dugan Target Swung Vase - P. Opal. (nice dark color)
211. 7 1/4" Dugan Ribbed Jack in the Pulpit Vase - P. Opal. (unusual shape; nice color)
212. Dugan Starfish Stemmed Ruffled Compote - P. Opal. (very scarce; nice color and opal.)
213. Dugan Folding Fan Ruffled 2 sided Stemmed Compote - P. Opal. (scarce pattern in an unusual shape)
214. Dugan Question Mark Crimped Edge Flared Stemmed Compote - P. Opal.
215. **DUGAN SOUTACHE DOMED CRIMPED EDGE PLATE - P. OPAL. (VERY RARE PATTERN IN A VERY RARE SHAPE)**
216. Dugan Ski Star domed Handgrip Plate - P. Opal. (nice dark color and irid.; very scarce)
217. Dugan Single Flower Framed (or Triplet) Exterior Crimped Plate - P. Opal.
218. **DUGAN BORDER PLANTS DOMED BOWL WITH 3 IN 1 EDGE - P. OPAL. (VERY RARE PATTERN IN AN UNUSUAL SHAPE)**
219. 9 1/2" Dugan Cherries 6 Ruffled Bowl with Jewelled Heart Exterior - P. Opal. (scarce; very nice example)
220. **11 1/2" DUGAN PERSIAN GARDEN LARGE RUFFLED FRUIT BOWL - P. OPAL. (RARE AND VERY DESIRABLE; A NICE, BIG SHOWY PIECE)**
221. **10" DUGAN GARDEN PATH VARIANT LARGE RUFFLED BOWL WITH SODA GOLD EXTERIOR - P. OPAL. (VERY SCARCE; NICE OPAL. EFFECT)**
222. **DUGAN CAROLINE HANDLED FLOWER BASKET - P. OPAL. (SUPER SCARCE; OPAL. AROUND EDGE)**
223. Dugan Fan ftd. Handled Sauce Boat - P. Opal. (very scarce; nice color and opal.)
224. Dugan Holly Whirl Handled Sauce Boat - P. Opal. (nice opal.)
225. **FENTON PEACOCK AND GRAPE SPATULA FTD. RUFFLED BOWL - P. OPAL. (VERY RARE COLOR FOR THIS ITEM; A VERY NICE EXAMPLE)**
226. Fenton Peacock and Grape Ruffled Bowl with Berry Exterior - Mari.
227. 7" Fenton Acorns Ice Cream Shaped Bowl - Blue (silvery)
228. Fenton Holly Ruffled Bowl - Green (gold irid.)
229. Fenton Holly Ruffled Bowl - Blue (pretty nice example)
230. **FENTON BLACKBERRY 2 ROW OPEN EDGE SQUARE RUFFLED HAT - RED / AMBERINA (RARE AND DESIRABLE; HAS A SILVERY OVERLAY)**
231. Fenton 2 Row Open Edge Jack in the Pulpit Hat - Red (super example with excellent color and irid.; has check in open edge)
232. Fenton 2 Row Open Edge Jack in the Pulpit Hat - Red (damaged in lattice)
233. Fenton 2 Row Open Edge Jack in the Pulpit Hat - Aqua (scarce with really nice color)
234. Fenton 2 Row Open Edge Ruffled Hat - Vaseline / Lt. Mari. (nice color; very desirable)
235. **6 3/4" FENTON STIPPLED RAYS FLAT PLATE - MARI. / VASELINE (VERY RARE COLOR FOR THIS ITEM; QUITE NICE)**
236. 6 3/4" Fenton Stippled Rays Flat Plate - Mari.
237. 6" Fenton Pine Cone Plate with Plain Exterior - Lt. Mari.
238. **7 1/2" FENTON HORSEHEAD MEDALLION FLAT PLATE - DK. MARI. (SCARCE AND VERY DESIRABLE; SUPER; HAS ONE SHARP POINT)**
239. 8" Fenton Leaf Chain Flat Plate - Blue (very scarce; silvery)
240. **FENTON ROSE GARDEN (OR ROSE BOUQUET) 2 HANDLED BON BON - WHITE (VERY RARE ITEM TO FIND IN ANY COLOR; A SUPER EXAMPLE)**
241. Fenton Persian Medallion 2 Handled Bon Bon - Green (scarce color; small open bubble)
242. Fenton Persian Medallion 2 Handled Bon Bon - Blue
243. Fenton Persian Medallion 2 Handled Bon Bon - Mari.
244. Fenton Birds and Cherries 2 Handled Card Tray - Mari.
245. Fenton Illusion 2 Handled Bon Bon - Lt. Mari.
246. Fenton Lotus and Grape 2 Handled Bon Bon - Dk. Mari.
247. Fenton Butterflies 2 Handled Bon Bon - Green
248. Fenton Butterflies 2 Handled Bon Bon - Amy. (has a chip or 2 on edge)
249. Fenton Butterflies 2 Handled Card Tray - Mari.
250. Fenton Pond Lily 2 Handled Bon Bon - Mari.
251. Fenton Peacock at the Urn Stemmed Ruffled Compote - Aqua / Mari. (scarce; polished open bubble on base)
252. Fenton Panelled Dandelion Tankard Water Pitcher - Blue (a super example but cracked)
253. (2) Fenton Panelled Dandelion Tumblers - Blue (scarce; selling choice)
254. Fenton Miniature Blackberry Compote - Blue (scarce; silvery; chipped on base)
255. **FENTON FLOWERS FTD. ROSE BOWL - MARI. / VASELINE (VERY RARE AND UNUSUAL COLOR - AND IT'S PERFECT)**

256. Fenton Persian Medallion Rose Bowl - Lt. Clam.
257. Fenton Stippled Rays 2 sided Open Sugar - Amber (unusual; color)
258. (2) Fenton Sailboat Wine Glasses - Dk. Mari. (selling choice)
259. Fenton Wine and Roses Stemmed Wine Glass - Dk. Mari. (nice color and detail)
260. **10" FENTON DIAMOND RIB STANDARD SWUNG VASE - WHITE (VERY RARE COLOR FOR THIS PATTERN; NICE AND FROSTY)**
261. 7" Fenton Butterfly and Berry Swung Vase with Tight Crimped Edge - Blue (very desirable shape)
262. 6 3/4" Fenton Butterfly and Berry Swung Vase - Mari.
263. 12 1/2" Fenton Rustic Mid size Swung Vase - Cobalt with odd Tint (very attractive; is sorta violet when looked through)
264. Fenton French Knots Ruffled Hat - Amy. (some minor roughness on base)
265. Fenton Stag and Holly Spatula ftd. Ruffled Bowl - Green (a beautiful example; has small chip on one foot)
266. 10 - 11" Fenton Stag and Holly Ball ftd. Ruffled Bowl - Mari. (a beautiful example)
267. Fenton Two Fruits Divided Candy Dish - Dk. Mari. (very scarce item)
268. Fenton Peacock and Dahlia Deep Flared Bowl - Mari.
269. Fenton Thistle 6 Ruffled Bowl - Green
270. **6" FENTON ACORN DEEP ROUND BOWL - SAPPHIRE BLUE (VERY ATTRACTIVE WITH NICE DARK, BRIGHT FINISH; VERY UNUSUAL)**
271. Fenton Iris Stemmed Ruffled Compote - Pastel Mari. (scarce; odd color)
272. Fenton Iris Stemmed Ruffled Compote - Dk. Mari.
273. Fenton Peacock and Grape Ruffled Bowl - Amy. (scarce; nice)
274. Fenton Peacock and Grape Ruffled Bowl - Blue (scarce; goldish)
275. **7 1/2" FENTON LIONS RUFFLED BOWL - DK. MARI. (VERY SCARCE; NICE COLOR AND DETAIL)**
276. **FENTON RAGGED ROBIN BOWL WITH 3 IN 1 EDGE - MARI. (RARE PATTERN; NICE COLOR AND IRID.)**
277. Fenton Concord Grape Bowl with 3 in 1 Edge - Green (nice color; rough on edge)
278. Fenton Leaf Chain 6 Ruffled Bowl - Teal Green (scarce color; tiny chip on edge)
279. 9 1/2" Fenton Vintage Grape Large Ice Cream Shaped Bowl - Cobalt Blue (super - a very impressive piece)
280. Fenton Vintage Grape Small size 2 pc. Epergne - Green (scarce; very nice but base of lily is rough)
281. 9 1/4" Fenton Vintage Grape Low Bowl with 3 in 1 Edge - Blue (pretty nice irid.)
282. 9" Fenton Vintage Grape Ruffled Bowl - Blue (dark & nice)
283. 9" Fenton Ribbon Tie Low Bowl / Plate with 3 in 1 Edge - Mari. (scarce; chip on back edge)
284. 9" Fenton Holly Flat Plate - Lt. Mari.
285. **9" FENTON ORANGE TREE FLAT PLATE - MARI. (VERY ATTRACTIVE PINK AND BLUE HIGHLIGHTS)**
286. 9" Fenton Leaf Chain Flat Plate - Pastel Mari. (very nice color and irid.)
287. Fenton ftd. Orange Tree 5 pc. Berry Set - Blue (scarce; chipped feet)
288. Fenton ftd. Orange Tree 7 pc. Berry Set - Mari. (scarce; chipped feet)
289. 10" Fenton Chrysanthemum ftd. Ruffled Bowl - Dk. Mari. (nice color)
290. Fenton Panelled Fan Vase with Sterling Ship Scene - Mari.
291. Unusual Flower Pot Shaped Vase with Silver Plate Trim, Top and Base - Mari. (signed by company: Made in USA)
292. Fenton Garland ftd. Rose Bowl - Lt. Mari.
293. 7" Fenton Coin Dot Low Ruffled Bowl - Lt. Mari.
294. Fenton Prayer Rug Bon Bon - Custard (not Carnival)
295. (2) Fenton Interior Panels Swung Funeral Vase - Ruby Red (not iridized; one is 21", one 19 1/4"; one has chip on base; selling as a pair)
296. 10" Fenton Rustic Swung Vase with Crimped Edge - Ruby Red (not iridized but scarce and unusual)
297. **8 1/2" X 4 1/2" FENTON STRETCH TURNED IN CYLINDER LARGE VASE - RED (RARE AND VERY UNUSUAL SHAPE)**
298. **8 1/4" X 7 1/2" FENTON STRETCH FLARED CYLINDER LARGE VASE - RED WITH BLACK PEDESTALED BASE (RARE AND VERY DESIRABLE; NICE)**
299. (2) 8 1/4" x 7 1/2" Fenton Stretch Flared Cylinder Large Vase - Ice Green with Black Pedestaled Base (nice and massive; so much each for pair)
300. **FENTON STRETCH LARGE 3 FTD. RUFFLED FRUIT BOWL - CELESTE BLUE (VERY SCARCE AND DESIRABLE; A VERY UNDERRATED ITEM - A BEAUTY!)**
301. Pair 10 1/4" Fenton Florentine Stretch Candlesticks - Celeste Blue (nice color; sold as a set)
302. Odd Fenton Stretch Tri-Cornered Squatty Round Vase - Celeste Blue (probably made from Guest Set Pitcher mold; really neat)
303. 5 1/2" x 4 1/2" Fenton Stretch Flared Cylinder Vase with Black Base - Celeste Blue (nice item)
304. Fenton Double Dolphin Small size Stretch Fan Vase - Pink (very scarce and desirable)
305. Fenton Melon Rib Small size Fan Vase - Tangerine with Opal. Tips (scarce; very desirable color)
306. 7 1/2" Fenton Flared Ruffled Pedestaled Base Vase - Tangerine
307. 12 1/2" Fenton Panelled Flared Ruffled Bud Vase - Tangerine with Opal. (a super item; has 1/2" hairline on top edge)
308. 10 - 10 1/2" Fenton Large Melon Rib Turned Out Console Bowl - Tangerine (very scarce and nice)
309. 9 1/2" Fenton Flared Round Console Bowl - Wisteria
310. 5" Fenton Rose Bowl Shaped Stretch Bowl - Red (nice dark color; very desirable)
311. 5 3/4" Odd Fenton Patterned 3 ftd. Flared Candy Dish - Velva Rose
312. Fenton Engraved Grape Covered Candy Jar - Mari. Stretch (scarce)
313. Fenton Covered Powder Puff on Squatty Stem - Mari. Stretch
314. Fenton Stick Match Holder - Oblong - Mari. Stretch (scarce item)
315. **N CONCAVE DIAMOND STRETCH TRI-CORNERED RUFFLED VASE - VASELINE (VERY SCARCE AND DESIRABLE - FROM THE GUEST SET MOLD)**
316. 6 3/4" N Panelled Interior Turned In Stretch Rose Bowl - Vaseline (odd item)
317. N Single Handled Chamberstick with Original Gold Trim - Vaseline (really neat and in nice condition)
318. 5" Fenton Stretch Cupped In Rose Bowl with Black Base - Blue Opaque (scarce)
319. 10" Fenton Large Sided Bowl with Laurel Band Edge - White (nice, massive item; great irid.)
320. Pair 11" Large Stretch Square Based Candlesticks - Olive Green (Fenton or Northwood - not sure, but a super set)
321. Pair 9" U.S. Glass Patterned Stretch Candlesticks - Green Opaque (odd color; nice)
322. Unusual 10 1/2" U.S. Glass Stretch Flared Console Bowl on Connected Black Base - Celeste Blue
323. 11 1/4" U.S. Glass Stretch Large Ruffled Centerpiece Bowl - Wisteria
324. 8 1/2" U.S. Glass Stretch Turned In Console Bowl - Wisteria
325. Odd Imperial Stretch Side Handled Jack in the Pulpit Vase - Smoke (very unusual item)
326. 12 1/2" Imperial Stretch Plain Swung Vase - Odd Teal (nice color and irid.)
327. 10 1/4" Imperial Stretch Plain Swung Vase - White (nice color and irid.)
328. Imperial Stretch Handled Cookie Tray with Etched Flowers - White (scarce)
329. Odd Imperial Jewels Pinch In Turned In Vase with Iron Cross - Pur. (really odd and desirable shape; nice)
330. 6 1/2" Imperial Jewels Square Bowl with Iron Cross - Dk. Mari. (nice; scarce)

331. 9 1/2" Fenton Stretch Ribbed Ring Ice Cream Shaped Console Bowl - Tangerine (same mold made in a flower pot, really nice)
332. 9 3/4" U.S. Glass Flared Enameled Decorated Bowl - Opaque White
333. 10 1/2" Imperial Brocaded Roses Flared Console Bowl - Dk. Ice Green
334. Souvenir of Buffalo, N.Y. Juice Glass - Lt. Mari.
335. Misc. Lot of Beaded Bags and Jewelry - Dark (aprox. 7 - 8 items; selling choice)
336. Pair 8 1/2" Heisey Type Long Handled Candlesticks - Lt. Mari. (very interesting items; nice irid.)
337. McKee (?) Diamond Block (?) Type Patterned Miniature Rose Bowl - Lt. Mari. (unusual and probably rare)
338. U.S. Glass 1911 Rochester Shriners Champagne Glass - Clear
339. European Aster Stemmed Round Doughnut Tray - Mari. (rare pattern in an unusual shape)
340. **CZECH ENAMELLED ROSE ELECTRIFIED NIGHT LIGHT - MARI. (A CUTE ITEM; RARE AND VERY DESIRABLE)**
341. Czech 3 pc. Melon Ribbed Tumble Up including Pill Glass - Mari. (neat and different)
342. Odd Peacock Tail Ruffled Berry Bowl - Mari. (maker ?)
343. Pair Devilbiss Atomizer and Perfume - Dk. Mari. (really nice set - so much each for pair)
344. Odd Panelled Perfume Bottle only - Mari. (Devillbiss ?)
345. **AUSTRALIAN BUTTERFLY BOWER STEMMED RUFFLED COMPOTE - PUR. (VERY RARE ITEM; NICE COLOR AND IRID.)**
346. Westmoreland Scales Ruffled Bowl - Mari.
347. Westmoreland Shell ftd. Candy Dish - Amy.
348. Westmoreland Louisa ftd. Rose Bowl - Amy.
349. Westmoreland Strutting Peacock Covered Sugar and Creamer - Amy.
350. Westmoreland Strutting Peacock Covered Sugar and Creamer - Amy.
351. Westmoreland Shell & Jewel Covered Sugar Bowl - Mari.
352. Westmoreland Prisms Handled Bon Bon - Dk. Mari.
353. Westmoreland Wide Panel Swung Vase - Teal
354. Westmoreland Corinth Swung Vase - Amy.
355. Westmoreland Corinth Jack in the Pulpit Vase - Teal
356. (2) Dugan Vintage Stemmed Wine Glasses - Mari.
357. Pair Melon Rib Salt and Pepper Shakers - Lt. Mari.
358. Plain Vase in Metal Frame - Lt. Mari.
359. Imperial Swirl Interior Fan Vase with Long Handles - Mari.
360. **9 1/2" IMPERIAL EMBOSSED SCROLL FLAT PLATE - PUR. (SUPER COLOR AND IRID.; A GREAT EXAMPLE)**
361. 9" Imperial Embossed Scroll Flat Plate - Helios Green (odd streak across face)
362. 9" Imperial Embossed Scroll Flat Plate - Mari. (super color and irid.)
363. 9 1/4" Imperial Grape Flat Plate - Dk. Mari.
364. 6 3/4" Imperial Grape "Downhill" Flat Plate - Dk. Mari. (odd shape and nice)
365. (2) 6 1/2" Imperial Grape Flat Plates - Dk. Mari. (selling choice)
366. (8) 7 1/4" Imperial Optic Flat Plates - Pastel Mari. (selling one choice, then so much per each)
367. 7 3/4" Imperial Heavy Grape Flat Plate - Amy. (not too pretty; light silver irid.)
368. 9" Imperial Frosted Block Flat Plate - Clam. (signed "Made in U.S.A.")
369. (2) Imperial Broken Arches Punch Cups - Dk. Mari. (selling per each)
370. **IMPERIAL GRAPE TUMBLER - SMOKE (VERY RARE COLOR FOR THIS PATTERN)**
371. Imperial Grape Stemmed Wine Glass - Pur. (super irid.)
372. Imperial Tulip and Cane Stemmed Flared Wine Glass - Dk. Mari. (very scarce item)
373. Imperial Crab Claw Tumbler - Dk. Mari.
374. **IMPERIAL HEAVY GRAPE 2 PC. PUNCH BOWL AND BASE - DK. MARI. (SUPER SCARCE ITEM WITH GREAT COLOR)**
375. **PAIR IMPERIAL SIX SIDED CANDLESTICKS - HELIOS GREEN (VERY TOUGH PAIR; SELLING AS A PAIR; MAY HAVE SOME CHIPS)**
376. Imperial Pansy Ruffled Bowl - Pur.
377. Imperial Pansy Ruffled Bowl - Helios Green
378. Imperial Windmill Milk Pitcher - Dk. Mari. (nice color and irid.)
379. Imperial Poinsettia Milk Pitcher - Dk. Mari. (super color)
380. **IMPERIAL POPPY SHOW LARGE BULBOUS VASE - PUR. (EXTREMELY RARE; A BEAUT - IT HAS A LARGE FLAT CHIP ON TOP EDGE)**
381. 7" Imperial Miniature Morning Glory Vase - Pur. (super color; nice)
382. 7 1/2" Imperial Miniature Morning Glory Vase - Pastel Mari. (super irid.)
383. (2) Imperial Plain Panelled Swung Vases - Dk. Mari. (so much each for pair)
384. Imperial Beaded Bullseye Swung Vase - Dk. Mari. (super color)
385. **8 1/2" X 5 3/4" IMPERIAL PARLOR PANELS FLARED SWUNG VASE - SMOKE (SUPER COLOR AND IRID.; SCARCE AND VERY ATTRACTIVE)**
386. 15 1/4" x 7" Imperial Morning Glory (or Parlor Panels) Large Funeral Vase - Dk. Mari. (nice color)
387. 16 1/2" x 6" Imperial Ripple Mid size Swung Vase - Dk. Mari. (nice color)
388. 11 1/2" Imperial Ripple Swung Vase - Aqua / Green (scarce; odd color)
389. 9 1/2" Imperial Ripple Swung Small Vase - Clam.
390. Imperial Rococo Vase - Dk. Mari. (very scarce; nice color)
391. **8" IMPERIAL OCTAGON FLARED VASE - DK. MARI. (VERY SCARCE ITEM; WITH NICE COLOR)**
392. 12" Imperial Plain Panels Swung Vase - Dk. Mari.
393. Imperial Grape Low Ruffled Bowl - Mari.
394. Imperial Star of David Ruffled Bowl - Pur. (super multi-colored irid.; very scarce)
395. **IMPERIAL 474 LARGE SIZE WATER PITCHER - DK. MARI. (SUPER COLOR AND IRID.; VERY NICE ITEM)**
396. (2) Imperial 474 Tumblers - Dk. Mari. (selling choice; nice)
397. Imperial Fancy Flowers Large Low Ruffled Compote - Dk. Mari. (scarce item; may be a bit rough on base)
398. Pair Imperial Premium Candlesticks - Pastel Mari. (sold as pair)
399. Pair Imperial Premium Candlesticks - Dk. Mari. (sold as pair)
400. Imperial 474 Punch Top only - Lt. Mari.
401. Imperial Octagon Large Round Bowl - White (really is clear / irid.)
402. Imperial Wide Panel Stemmed Crimped Compote - Dk. Mari.
403. (2) Imperial Star Medallion Short Squatty Stemmed Compote - Mari. (selling choice)
404. Pair Frosted Block Breakfast Sugar and Creamer - Clam. (scarce set)
405. Imperial Cockatoo Large Wall Pocket - Lt. Mari. (scarce)
406. Pair Spiral Candlesticks - Mari.
407. Imperial Pansy One Handled Nappy - Mari.
408. Set of 4 Concave Diamond Wax Holders - Mari.
409. Set of 4 Stretch Wax Holders - Vaseline
410. Dugan Floral and Grape 7 pc. Water Set - Mari.
411. Pastel Hat, Toothpick - Jack in the Pulpit Shape - Lt. Mari. (a cute miniature)
412. Odd ftd. Leaf Shaped Candy Dish - Odd colors
413. Odd Etched Handled Lemon Server - Lt. Mari. (well done and very scarce)
414. Unusual Crackle (or Soda Gold) Bulbous Ruffled Vase - Lt. Mari.
415. Odd Plain Bulbous Covered Powder Jar - Mari.



**Advance Auction Notice #1
Carnival Glass
Consignment Auction**

Dec. 3 & 4, 1993

at the Best Western,
New Philadelphia, OH

Nice items, a bit of everything.



**Advance Auction Notice #2
Don & Kay Kemp
Carnival Glass Auction**

Dec. 10 & 11, 1993

at the Holiday Inn - East
Indianapolis, IN

Some super rare items.

Burns Auction Service

109 E. Steuben St.
Bath, N.Y. 14810

First Class
U.S. Postage

PAID

Permit #7
Hammondsport, NY

