

275 + HUMMEL FIGURINE COLLECTION

WEDNESDAY
OCTOBER 27th
AT 4:00 PM

Inspection, Day of Auction 2:00 - 4:00 PM

AT: ALDERFER AUCTION CENTER
501 FAIRGROUNDS ROAD
HATFIELD, PA 19440
(215) 997-5100



275+ pcs. including many full bee - Prayer Before Battle, Feeding Time, School Boy, Merry Wanderer, School Girl 3/0, Let's Sing, Chimney Sweep, Apple Tree Boy & others. School Boys full bee w/incised crown mark (repair to foot). Other highlights include Little Fiddler 2/I, Culprits & Out of Danger lamp pr., Bookworm 3/II,



Meditation 13/V, Valentine Gift, Forest Shrine, Auf Weidersein, (3) '71 1st. Ed. annual Christmas plates w/boxes, 10pc. 214 nativity set, School Boys 170/I & School Girls 177/I, Spring Dance 353/I, Homeward Bound, Letter to Santa Claus, Doll Bath, Ride Into Christmas, Mail Coach, Photographer, annual plates through 1990. Over 15 Collector's club figurines & plates. **REQUEST DETAILED LISTING.**



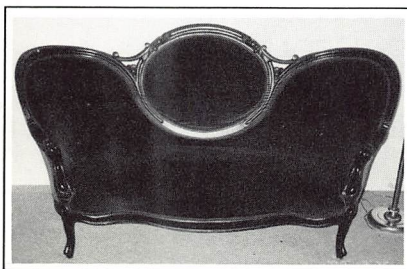
ANTIQUES • COLLECTIBLES • FURNISHINGS

225 PC. CARNIVAL GLASS COLLECTION

*For W. Horrocks, C. Powers &
Estate of G. Halteman, et.al.*

ANTIQUES & COLLECTIBLES

Vict. mirror back sofa & 3 chairs; marble top washstand w/bevel edge mirror; ladies slantfront writing desk; oak pcs. incl. 2 door bookcase, plank seat bench w/ arms, child's roll-top desk, jewelers showcase; cherry dropleaf table; (2) blanket chests one stenciled, Mission bench; miniature chest; 4 half spindle plank seat & 4 Windsor style chairs; mah. 3 door book case w/claw feet & 2 drawer dropleaf stand on ped.; brass dbl. bed; school desks; metal statuettes; brass, coin, sterling & S.P. pcs.; German mantle clock; brass stock ticker; trunk; phonographs incl. oak tabletop Victor VV-VI, mah. floor Victor VV-XI victrola, Edison Diamond disc console; trumpet; artwork incl. W. Nutting, pastels, silhouettes; Perkasia adv. pcs.; dolls, doll house & furniture; Ertl tractors & truck, toys, C. 1920's Buddy L. p-up truck; books including children's; local postcards; Christmas decorations; linens & quilts incl. Maria Moore 1832 N.J.; button & fountain pen collection; cost. jewelry; neon beer signs; etc.



THURSDAY
OCTOBER 28
AT 9:00 AM

*PREVIEW: Wednesday evening,
October 27, 5:00 - 7:00 PM*

CHINA & GLASSWARE: Dinner sets incl. 100 pc. Ahrenfeldt-Limoge, 94 pc. Rose Marie-Syracuse, Belle Meade-Mitton, Sheraton-Harmony House, Haviland; Staffordshire Mulberry pcs.; chocolate set; Ironstone & Wedgwood; Royal Dux & Rudolstadt; Royal Doulton & English Tobys; Andrea birds; German Beer steins; Orient. tea set; Noritake, Nippon, Royal Meissen, German, B & G plates; pottery incl. Abington, Frankoma, Hull, McCoy, Pennsbury, Red Wing, Roseville & Stangl; Fiestaware; 40+ Candlewick pcs.; Belleek, artglass, cobalt blue, Depression, cut & pressed pcs.; blown cruets; Waterford goblets; paper weights; mini. lamps; Bristol dresser set; etc.

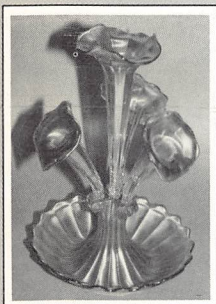


ADDRESS CORRECTION REQUESTED

FIRST CLASS

AUCTIONS

Wednesday, October 27, 4:00 pm



Hummel Figurine Collection (272 + Lots)

Thursday, October 28, 9:00 am

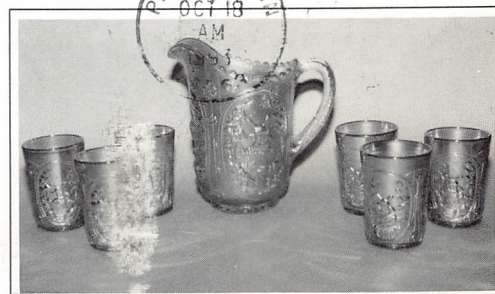
Antiques,
 Collectibles, Furnishings,
 225 + Carnival Glass Collection



CARNIVAL GLASS

COLLECTION - 225 pcs.

Including a purple Northwood Grape & Cable master punch bowl w/base & 11 cups (1 flute smoothed), marigold Windmill 7 pc. water set, Millersburg amethyst Strawberry Wreath ruffled bowl, marigold wide panel 4 lily epergne & Stag & Holly lg. three fld. bowl, blue Cathedral chalice, amethyst Trout & Fly square bowl. Other colors include green, clear, peach opal, smokey, clam broth, teal, amber & white in bowls, water sets, vases, water pitchers, Horlacher advertising bowl, etc. Patterns include Strawberry, Butterflies, Dragon & Lotus, Poinsettia, Panther, Peacock Tail, Crab Claw, Apple



& Pear,
 Orange Tree,
 Peacock & Urn, etc. **REQUEST DETAILED LISTING.**

FURNISHINGS: Quality L.R., B.R., D.R. & Kitchen pcs. incl. 4 pc. French Prov. & 4 pc. maple B.R. suite; 9 pc. Q. Anne style D.R. suite; 10 pc. mah. D. Phyfe style D.R. suite, dropleaf coffee & drum table; mah. leather top coffee table; oval ext. table w/4 D.R. chairs; 2 part hutch; wingback chair; kidney shaped dresser; Lay-Z-Boy recliner; appliances incl. Sharp & Litton microwave; Maytag washer/dryer; Kenmore side-by-side refrig.; etc.

GARDEN, TOOLS, ETC: Parker lawn sweeper; Bolton mulch mower; shop vac; saws; hand & garden tools; mt. bike; sleds; gas grill; patio furnishings; etc.

Terms: Cash / acceptable check / VISA - MC • **Doors Open 7:00 AM** • **Breakfast / Lunch available**