



AUCTION SERVICE

Mid Atlantic Carnival Glass Jamboree Auction

Friday, October 22, 1993, 7:00 pm

Lots 1 - 110 (preview 5:00 p.m.)

Saturday, October 23, 10:00 am

Lots 111 - end (preview 8:00 a.m.)

at the **Venice Inn - Best Western**

431 Dual Highway (US Rte. 40),
Hagerstown, MD 21740

(301) 733-0830 or 1-800-2-VENICE

(for reservations only)



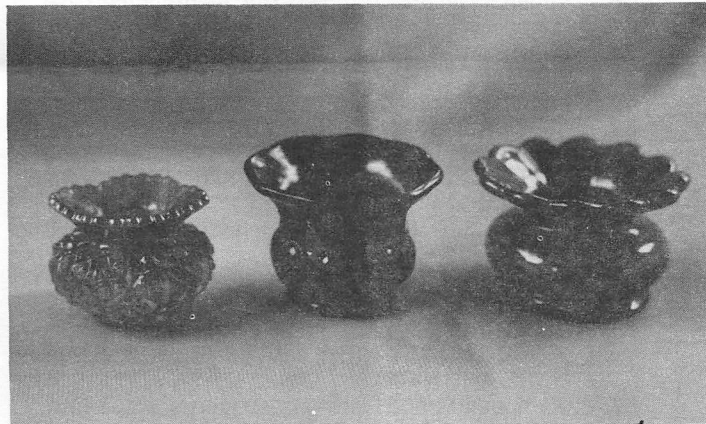
Here we go...one more time! Again this year we have the opportunity to bring you the annual auction for the Mid Atlantic Carnival Glass Jamboree.

This year's glass is part of the collection of Rev. Norm Nothing from the Pittsburgh area. Norm has been active for as long as I can remember and he has sure found his share of glass in that area. Now he's allowing you the opportunity to acquire some of this glass and we're sure you'll find something you like! Be sure to make the trip - you won't be sorry!

The Venice Inn - Best Western of Hagerstown, Maryland will host the event. You may make reservations by calling the motel at (301) 733-0830 or 1-800-2-VENICE (reservations only).

If worse comes to worse, you can always call on good ole Randy Smith at (717) 755-2083 for further information. Whatever you do, be sure to make it - it will be the usual good time for all!

Phone and/or Mail Bids due by Thursday, Oct. 21, 1993.



Mail Bids honored under the following conditions:

1. No deposit required. Bidders will take full responsibility to honor any and all bids we execute for them. Payment in full plus postage and handling required after notification and before we ship any item to them.
2. Items are bid on in perfect condition with average or above average iridescence OR as listed in the brochures. Bids will not be carried out when damage on an item has been found during the auction.
3. Successful bidders will be notified by collect call from the auctioneer **(so be sure to include phone number)**.
4. Phone inquiries about the glass or any other questions are welcome.
5. All non-successful will receive a result summary in the mail. Results of all bids will be provided.
6. If you have some other person at the auction bidding for you, they must pay for the item before taking it.
7. Mail bids due by Thursday, October 21, 1993

Burns Auction Service

Tom Burns
109 E. Steuben St.
Bath, New York 14810
(607) 776-7942

Bill Richards
44 Water St.
Poland, Ohio 44514
(216) 757-2001

Bill Richards III
524 Poland Ave.
Struthers, Ohio 44471
(216) 755-2620

1. Pastel Swan - Blue Opal. (scarce; not Carnival)
2. Pastel Swan - Blue Opal. (opal. on top of head; not carnival)
3. Pastel Swan - Clear Opal. (not Carnival)
4. Pastel Swan - Green Opal (scarce; not Carnival)
5. **PASTEL SWAN - VASELINE OPAL. (VERY SCARCE; NOT CARNIVAL)**
6. Pastel Swan - Lime Ice Green (scarce color)
7. Pastel Swan - Ice Green
8. Pastel Swan - Pink
9. Pastel Swan - Celeste Blue
10. **PASTEL SWAN - LT. P. OPAL. (VERY SCARCE AND DESIRABLE; PRETTY NICE)**
11. **PASTEL SWAN - AMY. (VERY SCARCE; NICE)**
12. **PASTEL SWAN - MARI. (ANOTHER SCARCE ONE; NICE COLOR)**
13. Pastel Swan - Celeste Blue (chip on top edge)
14. 1908 Shriners "Sheath of Wheat" Toothpick Holder - Cranberry Flash / Gold Decor. (very rare item; nice detail and gold decor.)
15. **WESTMORELAND MINIATURE INTAGLIO FLOWER BASKET - BLUE OPAL. (VERY RARE COLOR TO FIND IN THIS SCARCE PATTERN)**
16. **WESTMORELAND MINIATURE INTAGLIO FLOWER BASKET WITHOUT HANDLE - P. OPAL. (VERY SCARCE AND DESIRABLE MINIATURE ITEM)**
17. U.S. Glass Estate Open Breakfast Sugar - Lt. P. Opal. (scarce)
18. U.S. Glass Estate 3 ftd. Round Pin Dish - Smoke Flash (very scarce)
19. **FENTON KITTENS 4 SIDED RUFFLED BOWL - LT. AMY. / MARI. (VERY SCARCE IN THIS ODD TINT)**
20. **IMPERIAL PAPERWEIGHT - SIGNED WITH IRON CROSS - PUR. (HAS ALL TRADEMARKS ON TOP; HAS A FEW SMALL CHIPS WITH ONE FLAKE ON BASE)**
21. Imperial Flute Toothpick Holder - Pur. (scarce)
22. Imperial Flute Toothpick Holder - Green (scarce)
23. Imperial Flute Toothpick Holder - Dk. Mari.
24. Imperial Flute Toothpick Holder - Dk. Mari.
25. **N G & C WHIMSEY SPITTOON FROM POWDER JAR BASE - PUR. (EXTREMELY RARE AND DESIRABLE; IT IS DAMAGED - A CHIP AND IS CRACKED BUT A SUPER ITEM)**
- 25A. **UNUSUAL MINIATURE GEOMETRIC SPITTOON (PROBABLY MCKEE) - DK. MARI. (ABSOLUTELY SUPER, SUPER RARE AND EXTREMELY DESIRABLE)**
- 25B. **UNUSUAL FENTON WIDE PANELLED WHIMSEY SPITTOON - DK. MARI. (ABSOLUTELY SUPER, SUPER COLOR AND IRID.)**
- 25C. **SIGNED HANSEN WHIMSEY SPITTOON - RED**
26. **N G & C BANDED PIN TRAY - PUR. (VERY RARE VARIATION FOR THIS ITEM)**
27. **N G & C FTD. HATPIN HOLDER - LT. AMY. (SCARCE TINT)**
28. N G & C ftd. Hatpin Holder - Green (very scarce; good feet)
29. N G & C Shot Glass - Dk. Mari. (2 chips on collar base)
30. **DUGAN DAISY WEB 6 RUFFLED HAT - PASTEL MARI. (A BEAUT AND VERY SCARCE)**
31. Westmoreland ftd. Miniature Shell Mint Dish - Teal (scarce)
32. Fenton Miniature Blackberry Compote - Blue (scarce)
33. Fenton Miniature Blackberry Compote - Dk. Mari. (small flake)
34. M'burg Sunflower Pin Tray - Amy. (badly damaged)
35. **M'BURG PEACOCK AT THE URN GIANT COMPOTE - GREEN (EXTREMELY RARE AND DESIRABLE; NICE COLOR; HAS TINY CHIP ON STEM)**
36. **10" M'BURG PEACOCK AT THE URN LARGE ICE CREAM BOWL - GREEN (HAS BEE; NO BEADING; SUPER SATINY AND SCARCE)**
37. **9 1/2" M'BURG PEACOCK AT THE URN LARGE ICE CREAM BOWL - AMY. (SATINY AND NICE)**
38. 9 1/2" M'burg Peacock at the Urn Large 6 Ruffled Bowl - Green (satiny; chip on exterior of edge)
39. 5 1/4" M'burg Peacock at the Urn Flared Berry Bowl - Mari. (satiny; no bee, no beading; rare color)
40. 5 1/2" M'burg Peacock at the Urn Flared Berry Bowl - Amy. (radium; no bee, no beading; different mold than above)
41. M'burg Holly Sprig Deep Handled Bon Bon - Amy. (super radium)
42. M'burg Holly Sprig Deep Handled Bon Bon - Mari. (radium)
43. M'burg Holly Sprig Deep Handled Bon Bon - Green (satiny)
44. **M'BURG FEATHER AND HEART 7 PC. WATER SET - DK. MARI. (VERY SCARCE; NICE COLOR AND IRID. - A TOUGHIE)**
45. **M'BURG SWIRL HOBNAIL SQUATTY SPITTOON - PUR. (EXTREMELY SCARCE; NICE COLOR AND IRID.)**
46. M'burg Diamond Water Pitcher - Aqua / Green (very scarce tint; odd color; nice)
47. M'burg Diamond Water Pitcher - Amy. (very scarce)
48. M'burg Diamond Water Pitcher - Mari. (very scarce; peeling on flat of base)
49. M'burg Hanging Cherries Creamer - Green (satiny; scarce)
50. M'burg Hanging Cherries Spooner - Green (satiny; scarce)
51. Imperial (?) Frosted Block Stemmed Round Compote - Clam.
52. Imperial Star Medallion Milk Pitcher - Dk. Smoke (very scarce color)
53. Imperial Star Medallion Milk Pitcher - Lt. Smoke (scarce)
54. Imperial Star Medallion Milk Pitcher - Clam.
55. **IMPERIAL WINDMILL MID-SIZE WATER PITCHER - PUR. (SMALL FLAKE ON INSIDE OF ONE POINT OF EDGE)**
56. Imperial Windmill Tumbler - Pur. (very scarce; nice)
57. Imperial Windmill Tumbler - Pur. (very scarce; nice)
58. **IMPERIAL WINDMILL MID-SIZE WATER PITCHER - GREEN (SCARCE COLOR)**
59. Imperial Windmill Milk Pitcher - Green (scarce item)
60. **IMPERIAL FLUTE LARGE SIZE WATER PITCHER - PUR. (VERY SCARCE; NICE COLOR AND IRID.)**
61. **IMPERIAL POINSETTIA MILK PITCHER - SMOKE (VERY SCARCE ITEM WITH EXCELLENT IRID.)**
62. (2) Imperial Poinsettia Milk Pitchers - Dk. Mari. (selling choice - both really nice)
63. Imperial Grape Water Carafe - Pur. (super color and irid.)
64. Imperial Robin Mug - Dk. Mari. (chip on edge)
65. **IMPERIAL CHRYSANTHEMUM CHOP PLATE - SIGNED NUART - PUR. (SMALL FLAKE ON EDGE; RARE AND NICE)**
66. 9" Imperial Grape Plate - Green (very scarce item)
67. (2) 6" Imperial Grape Plates - Dk. Mari. (scarce; selling choice)
68. 8" Imperial Heavy Grape Plate - Pur. (super color and irid.)
69. 8" Imperial Sand and Shell Ruffled Bowl - Green
70. **IMPERIAL LOGANBERRY VASE - GREEN (SCARCE ITEM; VERY DESIRABLE)**
71. Imperial Grape Wine Decanter and Stopper - Green (scarce; pretty nice)
72. (2) Imperial Grape Wine Glasses - Green (selling choice)
73. Imperial Grape 8 pc. Wine Set - Dk. Mari.
74. Imperial Grape Wine Glass - Pur. (very nice irid.)
75. 4 3/4" Imperial Tulip and Cane Stemmed Wine Glass - Mari. (very scarce item)
76. Imperial Octagon Stemmed Goblet - Mari.
77. (3) Imperial Star and File Stemmed Wine Glasses - Mari. (sold per each - choice)
78. (4) Imperial Diamond Lace Tumblers - Pur. (sold as a group; all chipped on collar base)
79. **IMPERIAL STRETCH WIDE PANEL BREAKFAST CREAMER - RED (PRETTY SCARCE ITEM WITH EXCELLENT COLOR)**
80. **IMPERIAL OCTAGON COVERED BUTTER DISH - AQUA (EXTREMELY RARE COLOR FOR THIS ITEM; NICE)**

- 81. Imperial Crab Claw Water Pitcher - Mari. (very scarce; nice color)
- 82. Imperial Crab Claw Tumbler - Mari. (scarce)
- 83. Imperial Beaded Bullseye Swung Vase with Flattened Top - Dk. Mari. (nice color)
- 84. Fostoria (or Cambridge) Ice Crystal Covered Water Pitcher - White (scarce)
- 85. **WESTMORELAND CORINTH JACK IN THE PULPIT VASE - BLUE OPAL. (SUPER OPAL.; NICE COLOR AND IRID.)**
- 86. **WESTMORELAND CORINTH JACK IN THE PULPIT VASE - P. OPAL. (VERY SCARCE COLOR FOR THIS ITEM)**
- 87. Westmoreland Corinth Jack in the Pulpit Vase - Teal (scarce)
- 88. Westmoreland Corinth Jack in the Pulpit Vase - Amber (very scarce)
- 89. Westmoreland Corinth Jack in the Pulpit Vase - Emerald Green (odd tint; nice)
- 90. Westmoreland Corinth Jack in the Pulpit Vase - Amy.
- 91. Westmoreland Corinth Jack in the Pulpit Vase - Mari.
- 92. Fenton Interior Panelled Jack in the Pulpit Vase - Mari.
- 93. Steuben Verre de Soie Ribbed Shade - White (very scarce)
- 94. Small Metal Table Lamp with Leaf Tier Shade - Lt. Mari. / Milk Glass (cute item; unusual)
- 95. **U.S. GLASS PRINCESS TABLE LAMP - LT. MARI. (ONE OF ONLY TWO I KNOW OF; LT. COLOR BUT SUPER, SUPER RARE)**
- 96. **U.S. GLASS PRINCESS TABLE LAMP - PUR. (VERY RARE; NICE COLOR AND IRID.)**
- 97. U.S. Glass 1911 Rochester Shriners Champagne Glass - Clear
- 98. U.S. Glass 1910 New Orleans Champagne Glass - Clear
- 99. U.S. Glass 1909 Louisville Champagne Glass - Clear
- 100. **U.S. GLASS PALM BEACH SQUATTY WATER PITCHER - MARI. (SUPER SCARCE; NICE COLOR AND IRID.)**
- 101. U.S. Glass Palm Beach Covered Sugar Dish - Mari. (very scarce item)
- 102. U.S. Glass Palm Beach Table Creamer - Mari. (scarce)
- 103. 5 - 6" U.S. Glass Palm Beach Square Ruffled Bowl - Mari. (odd shape; very scarce)
- 104. (2) U.S. Glass Palm Beach Butter Lids only - Mari. (so much per each)
- 105. **U.S. GLASS COSMOS AND CANE PUNCH BOWL WHIMSEY - MARI. (VERY SCARCE SHAPE; SUPER DESIRABLE; NICE COLOR)**
- 106. U.S. Glass Cosmos and Cane Individual Berry Bowl - Honey Amber (scarce)
- 107. U.S. Glass Cosmos and Cane Small Breakfast Open Sugar - Honey Amber (very scarce size)
- 108. **U.S. GLASS COSMOS AND CANE 4 PC. TABLE SET - HONEY AMBER (SUPER RARE SET; NICE COLOR AND IRID.)**
- 109. **CAMBRIDGE INVERTED STRAWBERRY LARGE OPEN COMPOTE - MARI. (SIGNED NEARCUT; ODD TULIP SHAPE; GREAT COLOR)**
- 110. **EUROPEAN TIGER LILY TUMBLER - BLUE (MADE IN FINLAND; SUPER RARE ITEM; VERY NICE COLOR AND IRID.)**

START OF SECOND SESSION

- 111. (2) Dugan Twig Swung Bud Vases - Amy. (selling choice)
- 112. Dugan Grapevine Lattice Ruffled Hat - White (scarce)
- 113. Dugan Grape Delight 6 ftd. Rose Bowl - White (nice color and irid.)
- 114. Dugan Wreath of Roses Rose Bowl - Mari.
- 115. **DUGAN THUMBPRINT STRETCH STEMMED RUFFLED COMPOTE - ICE GREEN (VERY RARE COLOR FOR THIS ITEM; SUPER NICE)**
- 116. **DUGAN THUMBPRINT STRETCH STEMMED RUFFLED COMPOTE - CELESTE BLUE (VERY RARE COLOR; SUPER NICE COLOR AND IRID.)**

- 117. **DUGAN THUMBPRINT STRETCH LOW RUFFLED STEMMED COMPOTE - WHITE (ANOTHER RARE COLOR; SUPER NICE IRID.)**
- 118. Dugan Thumbprint Stemmed Ruffled Compote - P. Opal. (scarce)
- 119. Dugan Thumbprint Stemmed Ruffled Compote - Mari.
- 120. **8 1/4" DUGAN CIRCLE SCROLL SWUNG VASE - PUR. (VERY RARE AND DESIRABLE; SUPER COLOR AND IRID.)**
- 121. 9" Dugan Pulled Loop Swung Vase - P. Opal. (nice opal.)
- 122. Dugan Mary Ann Handled Vase - Mari.
- 123. 9 1/4" Dugan Round Up Low Ruffled Bowl - White (very nice irid.)
- 124. 8 1/4" Dugan Round Up Ice Cream Shaped Bowl - White (nice irid.)
- 125. 9 1/4" Dugan Double Stem Rose Domed Plate - White (very scarce item)
- 126. **6 1/2" DUGAN PERSIAN GARDEN PLATE WITH POOL OF PEARLS EXTERIOR - WHITE (SCARCE; NICE COLOR)**
- 127. 11" Dugan Persian Garden Large Ice Cream Bowl - White (very scarce; nice irid.)
- 128. **DUGAN BEADED SHELL HANDLED MUG - WHITE (2 MOLD FLAWS - CHECK IN TOP OF HANDLE; SUPER RARE)**
- 129. (2) Dugan Vintage Band Mugs - Mari. (sold per each)
- 130. **DUGAN QUILL TUMBLER - DK. MARI. (SUPER RARE ITEM; SUPER COLOR)**
- 131. **DUGAN DAHLIA FTD. COVERED BUTTER DISH - WHITE WITH DECOR. (RED FLOWERS, GOOFUS FEET; VERY UNUSUAL AND VERY RARE)**
- 132. **9" DUGAN WINDFLOWER PLATE - BLUE (VERY SCARCE COLOR FOR THIS ITEM)**
- 133. **FENTON CORNUCOPIA STRETCH 3 PC. CONSOLE SET - ICE BLUE (SUPER SET IN A SUPER DESIRABLE COLOR; NICE)**
- 134. **N CONCAVE DIAMOND 8 PC. COVERED LEMONADE SET - CELESTE BLUE (VERY SCARCE SET; NICE COLOR AND IRID.)**
- 135. **N PEACOCKS PLATE WITH RIBBED EXTERIOR - ICE BLUE (VERY RARE AND DESIRABLE; PLATE SITS A BIT CROOKED BUT IS REALLY NICE)**
- 136. N Peacocks Plate with Ribbed Exterior - Renninger Blue (crack in base but sooo very rare and nice)
- 137. **N PEACOCKS STIPPLED BOWL WITH PIE CRUST EDGE AND RIBBED EXTERIOR - DK. MARI. (SUPER COLOR AND IRID.)**
- 138. N Peacock at the Fountain Covered Butter Dish - Dk. Mari. (super scarce with super color)
- 139. N Three Fruits Plate with Basketweave Exterior - Pastel Mari. (very scarce)
- 140. **N THREE FRUITS STIPPLED PLATE WITH RIBBED EXTERIOR - ELEC. BLUE (SUPER COLOR AND IRID.; VERY DESIRABLE)**
- 141. N Good Luck Bowl with Pie Crust Edge and Ribbed Exterior - Pur. (super color and irid.; nice multi-colored finish)
- 142. N Good Luck Ruffled Bowl with Ribbed Exterior - Pur. (super color and irid.; very desirable)
- 143. N G & C Variant Ruffled Bowl with Plain Exterior - Dk. Pur. (very nice color and very scarce)
- 144. 9" N G & C Plate with Basketweave Exterior - Pur. (very scarce)
- 145. **N G & C FTD. FRUIT BOWL WITH STRAIGHT UP POINTS - WHITE (EXTREMELY RARE AND UNDER-RATED ITEM; SUPER COLOR AND IRID.)**
- 146. N G & C Covered Sweetmeat Compote - Horehound Lid / Pur. Base (scarce color for lid)
- 147. 7 1/2" N G & C Plate with Basketweave Exterior - Amy. (scarce item)
- 148. N G & C Water Pitcher - Dk. Mari. (super color and irid.)
- 149. N G & C Butter Lid only - Pur.
- 150. **N DANDELION 6 PC. TANKARD WATER PITCHER - WHITE (SUPER, SUPER RARE SET - PROBABLY ONE OF THE TOUGHEST NORTHWOOD SETS TO FIND; IT HAS ONE DAMAGED TUMBLER; SUPER RARE)**

- 150a **NG & C 7 PC. TABLE SIZE PUNCH SET - WHITE (EXTREMELY RARE SET; BOWL AND BASE ARE SUPER FROSTY)**
151. N Oriental Poppy Tankard Water Pitcher - White (damaged on base but super rare with really nice color and irid.)
152. (5) N Oriental Poppy Tumblers - White (selling choice; super color and irid.)
153. N Heart and Flowers Stemmed Ruffled Compote - White (scarce; nice color and irid.)
154. **N WIDE PANEL 4 LILY EPERGNE - WHITE (BASE DAMAGED BY LILY; BUT VERY ATTRACTIVE; A SUPER RARE ITEM)**
155. **19" N TREE TRUNK SWUNG FUNERAL VASE - WHITE (SUPER, SUPER RARE AND VERY DESIRABLE - SUPER NEAT)**
156. **19" N TREE TRUNK SWUNG FUNERAL VASE - PUR. (GOLD IRID. ON A VERY RARE AND DESIRABLE ITEM; NEAT)**
157. **N GOOD LUCK RUFFLED BOWL WITH RIBBED EXTERIOR - AQUA OPAL. (SUPER RARE AND VERY DESIRABLE; NICE IRID.)**
158. **N THREE FRUITS STIPPLED RUFFLED BOWL WITH RIBBED EXTERIOR - AQUA OPAL. (SUPER RARE AND VERY DESIRABLE; NICE IRID.)**
159. **8" N WISHBONE FTD. RUFFLED BOWL WITH RUFFLES AND RINGS EXTERIOR - LIME ICE GREEN (SMALL CHIP OFF ONE POINT BUT A SUPER RARE TINT FOR A RARE ITEM)**
160. N Dandelion Mug with Knights Templar Advert. - Ice Green (chip on collar base but again, a nice rare item with nice irid.)
161. N Rose Show Plate - Blue (chip on one rose but very rare)
162. N Poppy Show Ruffled Bowl - White (small flake on inside edge; super scarce)
163. 9" N Plain Interior Plate / Basketweave Exterior - Green (scarce color)
164. N Greek Key Exterior Domed Ruffled Bowl - Mari.
165. N Singing Bird or Peacock at the Fountain Butter Base only - Pur.
166. Fenton Orange Tree Stemmed Ruffled Sherbet - Blue
167. Fenton Holly Stemmed Ruffled Compote - Blue
168. Fenton Holly Stemmed Ruffled Compote - Mari.
169. Fenton Peacock at the Urn Stemmed Flared Compote - Mari.
170. **FENTON STRAWBERRY SCROLL WATER PITCHER - BLUE (EXTREMELY RARE ITEM; GOLD IRID.; A WONDERFUL PIECE OF GLASS)**
171. Fenton Strawberry Scroll Tumbler - Blue (very scarce item)
172. Fenton Little Fishes ftd. Ruffled Sauce - Blue (scarce color)
173. Fenton Little Fishes ftd. Ruffled Sauce - Mari.
174. 6" Fenton Persian Medallion Plate - Mari.
175. **17 3/4" FENTON RUSTIC SWUNG FUNERAL VASE WITH COLLAR BASE - ELEC. BLUE (ABSOLUTELY SUPER COLOR AND IRID.; HAS A SMALL CHECK IN COLLAR BASE - SUPER!)**
176. **18 1/4" FENTON RUSTIC SWUNG FUNERAL VASE WITH COLLAR BASE - GREEN (ABSOLUTELY SUPER COLOR AND IRID.; HAS MANUF. CHECK IN BASE)**
177. **19" FENTON RUSTIC SWUNG FUNERAL VASE - BLUE (VERY SCARCE; NICE AVERAGE COLOR)**
178. **19: FENTON RUSTIC SWUNG FUNERAL VASE - MARI. (VERY SCARCE; NICE COLOR AND IRID.)**
179. Fenton Stag and Holly Giant ftd. Rose Bowl - Dk. Mari. (very scarce and underpriced; nice color and detail)
180. **FENTON STARFLOWER WATER PITCHER - BLUE (ONE OF THE FINEST EXAMPLES OF THIS PATTERN I'VE SEEN; SUPER RARE; GREAT COLOR AND IRID.)**
181. **9" FENTON HEART AND VINE FLAT PLATE - BLUE (SUPER COLOR AND IRID.; VERY DESIRABLE)**
182. (2) Fenton Panther Individual Flared Berry Bowls - Blue (very scarce; selling choice)
183. Fenton Panther Individual 6 Ruffled ftd. Sauce - Mari.
184. 8 1/2" Fenton Stag and Holly spatula ftd. Ruffled Bowl - Green (very scarce color - a nice item)
185. **FENTON TEN MUMS TANKARD WATER PITCHER - BLUE (SUPER RARE PATTERN AND ONE OF THE MOST DESIRABLE FENTON PITCHERS)**
186. (4) Fenton Ten Mums Tumblers - Blue (2 multi-colored, 2 silvery irid.; selling choice)
187. **FENTON BLUEBERRY TUMBLER - WHITE (VERY RARE COLOR FOR THIS ITEM; VERY NICE)**
188. Fenton Milady Tumbler - Blue (very scarce item)
189. Fenton Milady Tumbler - Dk. Mari. (super color; scarce)
190. **FENTON PANELLED DANDELION 5 PC. TANKARD WATER SET - AMY. (A VERY SCARCE AND DESIRABLE SET - HAS ONE DAMAGED TUMBER)**
191. **FENTON PANELLED DANDELION 7 PC. TANKARD WATER SET - MARI. (VERY SCARCE SET IN THIS COLOR; REALLY NICE)**
192. **FENTON GRAPE AND LATTICE TANKARD WATER PITCHER - WHITE (VERY RARE COLOR FOR THIS PATTERN; HAS MANUF. CHECK IN HANDLE)**
193. **FENTON GRAPE AND LATTICE TUMBLER - WHITE (VERY RARE COLOR FOR THIS ITEM)**
194. Fenton Floral and Grape Tumbler - White (very rare; really nice color)
195. **FENTON HOLLY RUFFLED HAT - RED (SUPER COLOR AND IRID.; VERY NICE)**
196. **FENTON PERSIAN MEDALLION 2 HANDLED BON BON - RED (SUPER RARE AND VERY DESIRABLE; A NICE ITEM)**
197. **FENTON ORANGE TREE SHAVING MUG - RED (VERY RARE WITH EXCELLENT COLOR AND IRID. - NICE)**
198. Fenton Orange Tree Shaving Mug - Dk. Mari.
199. Fenton Orange Tree Standard Flared Mug - Mari. / Vaseline (very scarce color)
200. **FENTON PERSIAN MEDALLION ROSE BOWL - AMY. (EXTREMELY RARE COLOR FOR THIS ITEM; SUPER, SUPER RARE)**
201. Fenton Orange Tree Handled Loving Cup - Blue (very scarce; nice color and irid.)
202. Fenton Butterfly and Berry Swung Vase - Blue (chip in base but scarce)
203. Fenton Butterfly and Berry Swung Vase - Mari. (scarce)
204. Fenton Floral and Grape Tumbler - Amy. (scarce)
205. **FENTON BUTTERFLY AND FERN WATER PITCHER - BLUE (VERY RARE PITCHER WITH NICE COLOR AND IRID.)**
206. (3) Fenton Butterfly and Fern Tumblers with Manuf. ground Base - Amy. (selling choice)
207. (2) Fenton Butterfly and Fern Tumblers with Manuf. ground Base - Green (selling choice)
208. Fenton Butterfly and Fern Tumbler with Collar Base - Green (chipped but very scarce)
209. Fenton Enamelled Crocus Bulbous Water Pitcher - Ice Green (scarce item)
210. **FENTON DIANTHUS ENAMELLED / PRISM BAND TANKARD WATER PITCHER - WHITE (SUPER SCARCE WITH NICE DECORATION AND IRID.)**
211. Fenton Freesia Enamelled Tankard Water Pitcher - Mari. / Clear (very scarce; nice decoration)
212. (6) Fenton Crocus Tumblers - Mari. (selling so much each for set)
213. **7 1/2" FENTON VINTAGE GRAPE PLATE - BLUE (VERY SCARCE ITEM; NICE COLOR AND IRID.)**
214. 9" Fenton Ribbon Tie Low Ruffled Plate - Blue (flake on edge but very scarce)
215. Fenton Wine and Roses Stemmed Goblet - Mari.
216. Fenton Orange Tree Stemmed Flared Goblet - Dk. Mari.
217. Fenton Orange Tree Stemmed Goblet - Mari.
218. Fenton Sailboat Stemmed Wine Glass - Mari.
219. Odd Acid Etched Shade with Yellow Stain - Frosted
220. Dugan Ski Star Large Ruffled Bowl - P. Opal. (damaged: bruise on base)