



**AUCTION SERVICE**

## **The Keck Collection**

**Friday & Saturday, August 27 & 28, 1993**

6:30 pm, Friday, Lots 1 - 200, 4:00 pm preview

9:00 am, Saturday, Lots 201 - end, 8:00 am preview

at the **Harley Hotel of Columbus**

1000 East Dublin - Granville Rd. Columbus, OH 43229

(Located at Exit 117 of I-71 & Ohio Rte. 161)

**(614) 888-4300**





Diversified....that's more like it! And that's what I like about this auction assortment. For all the years I've known Dennis Keck I've wondered why we got along so well and, to tell the truth, if I wasn't doing this auction, I'd be here - buying!

We've been planning to sell this collection for a few years and now's the time! It's a super selection of American glassware acquired from all over the East, with a special emphasis on glass made at the Dugan / Diamond Glass Co. of Indiana, Pa. I really hope you'll be able to make it - you'll have a ball!

The Harley Hotel of Columbus will host the event. A special rate is available for those who attend - be sure to mention Burns Auction Service. There are also a number of motels located near by, just ask the Harley for further information.

Mail Bids Due by Thursday, August 26, 1993.

**SPECIAL NOTE:** Tom will be in transit during this time (the Pacific Northwest Convention on August 21) so mail your bids to his NY address or call one of the Richards boys.

## Burns Auction Service

Tom Burns  
109 E. Steuben St.  
Bath, New York 14810  
(607) 776-7942

Bill Richards  
44 Water St.  
Poland, Ohio 44514  
(216) 757-2001

Bill Richards III  
524 Poland Ave.  
Struthers, Ohio 44471  
(216) 755-2620

Mail Bids honored under the following conditions:

1. No deposit required. Bidders will take full responsibility to honor any and all bids we execute for them. Payment in full plus postage and handling required after notification and before we ship any item to them.
2. Items are bid on in perfect condition with average or above average iridescence OR as listed in the brochures. Bids will not be carried out when damage on an item has been found during the auction.
3. Successful bidders will be notified by collect call from the auctioneer (**so be sure to include phone number**).
4. Phone inquiries about the glass or any other questions are welcome.
5. All non-successful will receive a result summary in the mail. Results of all bids will be provided.
6. If you have some other person at the auction bidding for you, they must pay for the item before taking it.
7. Mail bids due by Thursday, August 26, 1993

- \_\_\_ 1. New Imperial Pastel Swan - Non-irid. Blue
- \_\_\_ 2. Pastel Swan - Ice Green
- \_\_\_ 3. Pastel Swan - Celeste Blue
- \_\_\_ 4. Pastel Swan - Pink
- \_\_\_ 5. **PASTEL SWAN - MARI. / TEAL BLUE (VERY ODD TINT; UNUSUAL)**
- \_\_\_ 6. **PASTEL SWAN - LT. MARI. (VERY SCARCE COLOR)**
- \_\_\_ 7. Pastel Swan - Vaseline Opal. (not carnival; scarce)
- \_\_\_ 8. Pastel Swan - Lime Green Opal. (not carnival; scarce)
- \_\_\_ 9. Pastel Swan - Clear Opal. / Goofus (unusual with decor.; not carnival)
- \_\_\_ 10. Pastel Swan (raised neck) - Blue Opal. (scarce; not carnival)
- \_\_\_ 11. Pastel Swan - Blue Opal. (same as above)
- \_\_\_ 12. Pastel Swan - Blue Opal. Gold Trim (same as above with unusual decor.)
- \_\_\_ 13. Pastel Swan - Odd Blue Opal. (not carnival; odd dark tint)
- \_\_\_ 14. Pastel Swan - Clear Opal. (not carnival)
- \_\_\_ 15. **N ROSE SHOW RUFFLED BOWL - HONEY AMBER (EXTREMELY RARE COLOR; SUPER IRID. & NICE)**
- \_\_\_ 16. **N ROSE SHOW RUFFLED BOWL - ICE BLUE (VERY RARE; NICE IRID. & SUPER)**
- \_\_\_ 17. **N EMBROIDERED MUMS RUFFLED BOWL WITH RIBBED EXTERIOR - ICE GREEN (VERY RARE; NICE IRID. & SUPER)**
- \_\_\_ 18. **N EMBROIDERED MUMS RUFFLED BOWL WITH RIBBED EXTERIOR - ICE BLUE (VERY RARE; DARK WITH BRIGHT IRID.)**
- \_\_\_ 19. **N HEART AND FLOWERS BOWL WITH PIE CRUST EDGE AND RIBBED EXTERIOR - WHITE (SUPER SCARCE AND GREAT IRID.; ONE OF THE BEST!)**
- \_\_\_ 20. **N HEART AND FLOWERS BOWL WITH PIE CRUST EDGE AND RIBBED EXTERIOR - CUSTARD (NOT CARNIVAL; VERY RARE AND DESIRABLE)**

- \_\_\_ 21. **N HEART AND FLOWERS PLATE WITH RIBBED EXTERIOR - ICE BLUE (VERY RARE AND NICE; HAS 1" BRUISE ON BASE)**
- \_\_\_ 21A. **N HEART AND FLOWERS STEMMED RUFFLED COMPOTE - GREEN (EXTREMELY DESIRABLE; RARE COLOR WITH GOLD AND BLUE HIGHLIGHTS)**
- \_\_\_ 22. N Heart and Flowers Stemmed Ruffled Compote - Blue Opal. (not carnival; very scarce)
- \_\_\_ 23. N Round Bushel Basket - Blue Opal. (not carnival; very scarce)
- \_\_\_ 24. N Wreath of Roses Stippled Handled Bon Bon with Basketweave Exterior - Pur. (very scarce pattern; nice)
- \_\_\_ 25. **N DRAPERY TUMBLER - WHITE (SUPER, SUPER RARE; GREAT COLOR; ONE OF 2 KNOWN)**
- \_\_\_ 26. **N DRAPERY INDIVIDUAL BERRY BOWL - WHITE (SUPER RARE - ONLY ONE I'VE SEEN!)**
- \_\_\_ 27. **N DRAPERY ROSE BOWL - ICE BLUE (VERY RARE; NICE COLOR AND IRID.)**
- \_\_\_ 28. **N DRAPERY ROSE BOWL - WHITE (RARE AND DESIRABLE; NICE COLOR AND IRID.)**
- \_\_\_ 29. **N DRAPERY ROSE BOWL - AQUA OPAL. (VERY SCARCE AND DESIRABLE; SUPER PASTEL)**
- \_\_\_ 30. **N DRAPERY ROSE BOWL - ELEC. BLUE (VERY RARE AND DESIRABLE; NICE COLOR AND IRID.)**
- \_\_\_ 31. **N DRAPERY ROSE BOWL WITH PLAIN EDGE - PUR. (VERY SCARCE WITH PLAIN EDGE; NICE COLOR AND IRID.)**
- \_\_\_ 32. **N DRAPERY ROSE BOWL - DK. MARI. (VERY SCARCE; NICE DARK COLOR AND IRID.)**
- \_\_\_ 33. **N DRAPERY ROSE BOWL - BLUE OPAL. (VERY SCARCE; NOT CARNIVAL; TOUGH TO FIND)**
- \_\_\_ 34. N Drapery Tri-Cornered Candy Dish - Mari. (very scarce; nice color)
- \_\_\_ 35. **N PEACOCK AT THE FOUNTAIN COVERED BUTTER DISH - GREEN (VERY RARE; TOP A BIT LIGHTER)**



36. **N PEACOCK AT THE FOUNTAIN COVERED SUGAR BOWL - GREEN (VERY RARE; REALLY TOUGH TO FIND)**
37. N Peacock at the Fountain Creamer - Green (rare but cracked)
38. N Peacock at the Fountain Punch Cup - Lavender (very scarce; odd light tint)
39. (4) N Peacock at the Fountain Punch Cups - Pur. (nice color; sold per each for set!)
40. **N G & C BANQUET PUNCH BOWL AND BASE - ICE BLUE (BADLY DAMAGED BUT SUPER RARE AND PRETTY)**
41. N G & C Banquet Punch Bowl and Base - Green Top / Pur. Base (top cracked, but rare and desirable)
42. **N G & C COVERED SWEETMEAT COMPOTE - DK. MARI. (VERY RARE AND A BEAUT! TOP HAS BRUISE ON LID)**
43. **N G & C STIPPLED TUMBLER - PUR. (VERY RARE WITH GREAT COLOR AND IRID.)**
44. **N G & C STIPPLED TUMBLER - DK. MARI. (VERY SCARCE; NICE DARK COLOR AND IRID.)**
45. **N G & C BANDED FTD. HATPIN HOLDER - BLUE (SUPER RARE WITH REALLY NICE COLOR; TINY CHIP ON ONE FOOT)**
46. N G & C ftd. Hatpin Holder - Ice Green (rare but one flange has been knocked off)
47. **N G & C TUMBLER - SMOKEY LAVENDER / HORE-HOUND (VERY SCARCE; UNUSUAL TINT)**
48. N G & C Stippled Tumbler - Custard / Nutmeg (very scarce; nice nutmeg)
49. N G & C Punch Cup - Lime Ice Green (scarce color and irid.)
50. **DUGAN "FILIGREE LINE" LARGE BULBOUS VASE WITH BROKEN PONTIL - PUR. (SUPER ONE-OF-A-KIND RARITY; COULD BE THE 1ST IRIDIZED PIECE OF DUGAN EVER PRODUCED; PICTURED ON PG. 94 OF MEASELL'S DUGAN / DIAMOND BOOK, AS ARE THE NEXT 4 ITEMS)**
51. Dugan "Filigree Line" Large Bulbous Vase - Blown in Mold - Green / Gold (scarce item; same pattern as above)
52. 11" Dugan "Venetian Line" Tall Twisted Vase - Mari. / with Opal. (not carnival but very unusual)
53. Dugan Big Leaf and Little Flowers Bulbous Blown Vase - Ruby with Worn Gold (not carnival; rare item)
54. **DUGAN SILVER FILIGREE CORNFLOWER PERFUME BOTTLE AND STOPPER - DECORATED IVORY (CUSTARD) (VERY RARE; NOT CARNIVAL; ONLY ONE KNOWN)**
55. Dugan Grape Cluster and Lattice Tankard Water Pitcher - Crystal Green with Gold (scarce pattern; nice gold; not carnival)
56. 10" Dugan Filigree Line "Big Wheels" Bulbous Vase - Crystal Green with Gold (scarce item; not carnival)
57. 7 1/2" Dugan Diamonds and Clubs Filigree Line Bulbous Vase - Crystal Green with Gold (scarce item; nice decoration)
58. Dugan Diamonds and Clubs Handled Wine Decanter and Stopper - Crystal Green with Gold (very scarce; nice decoration)
59. Dugan Cornflower Toilet Bottle with Stopper - Crystal Blue with Silver (very rare item; nice decoration)
60. Dugan Cornflower Stemmed Wine Glass - Crystal Green with Gold (very scarce item)
61. Dugan Cornflower Tumbler - Crystal Green with Silver Decor. (very scarce pattern; nice)
62. (2) Dugan Quill Tumblers - Crystal Green with Gold (very scarce; sold per each for pair)
63. Dugan Diamonds and Clubs Tumbler - Crystal Green with worn Gold (very scarce)
64. Dugan Lattice Work Tumbler - Crystal Green with Gold (unusual pattern)
65. **DUGAN STIPPLED ESTATE (NON-STIPPLED) TRI-CORNERED VASE - MARI. / LIME GREEN (EXTREMELY RARE ITEM - A TOUCH OF MARIGOLD ON TOP)**
66. Dugan Stippled Estate Tri-cornered Vase - Blue Granite-ware with Frit. (unusual; rare item)
67. Dugan Stippled Estate Tri-cornered Vase - White Granite-ware with Frit. (unusual; rare item)
68. Large Dugan Estate Tri-cornered Vase - Blue Opal. (unusual; nice color)
69. Dugan Mary Ann Handled Vase - Clear Opal. (scarce)
70. Very Odd Dugan Honeycomb Tri-cornered Rose Bowl - Lime Green / Gold Irid. (unusual shape and color)
71. Dugan Honeycomb Rose Bowl - Irid. Antique Green (scarce)
72. Dugan Honeycomb Rose Bowl with Flared Out Top - Irid. Antique Green (scarce shape)
73. Dugan Honeycomb Rose Bowl - Irid. Antique Pink (scarce color; nice)
74. Dugan Tall Flared Vase - White Graniteware (unusual)
75. **DUGAN PANELLED SPRIG WATER PITCHER - WHITE GRANITWARE (VERY UNUSUAL TEXTURE; RARE ITEM TO FIND)**
76. Dugan Panelled Sprig Creamer - Blue Graniteware (very unusual; nice color and quality)
77. Dugan Hourglass Vase with Turned In Top - Dk. Blue Graniteware (unusual; interesting color and texture)
78. Dugan Hourglass Vase with Tri-cornered Top - Irid. Green (unusual)
79. Dugan Hourglass Vase with Fan Vase Top - Irid. Green (odd shape)
80. 9" Early Dugan Vase with Applied Basket Handle - Ice Green (strange item made to a basket)
81. 8" Unusual Tall Dugan Loetz Type Vase - Irid. Lime Green (scarce)
82. 10" Dugan Jewelled Heart 2 Sided Banana Dish - Crystal / Goofus (odd item)
83. Dugan Single Flower Applied Handle Basket - Crystal / Goofus (scarce)
84. Dugan Twig Swung Bud Vase - Crystal / Decor. (how many crystal ones do you see?)
85. **DUGAN HERON MUG - PUR. (VERY SCARCE; REALLY NICE DETAIL AND IRID.)**
86. Dugan Stork and Rushes with Lattice Band Mug - Blue Opal. (not carnival; very scarce)
87. Dugan Stork and Rushes with Lattice Band Mug - Clear Opal. (not carnival; very scarce)
88. Dugan Stork and Rushes with Lattice Band Tumbler - Clear Opal. (not carnival; very scarce)
89. Dugan Diamonds and Clubs Handled Mug - Crystal Green with Silver Decor. (rare pattern; same mold as Fishermans)
90. **DUGAN STORK AND RUSHES WITH LATTICE BAND MUG - AMY. (VERY SCARCE; NICE COLOR AND IRID.)**
91. Dugan Fishermans Mug - Pur. (scarce; really nice color and irid.)
92. Base to Dugan Stork and Rushes Punch Bowl - Amy. (scarce if ya need it)
93. Dugan Diamond Spearhead Toothpick Holder - Green Opal. (scarce; has chip on edge)
94. Dugan Diamond Spearhead Sugar Lid - Lt. Blue Opal. (scarce piece)
95. **DUGAN DIAMOND SPEARHEAD WATER PITCHER - VASELINE OPAL. (VERY RARE ITEM; SUPER COLOR AND OPAL.)**



96. DUGAN DIAMOND SPEARHEAD COVERED BUTTER DISH - VASELINE OPAL. (VERY RARE; GREAT OPAL.)
97. DUGAN DIAMOND SPEARHEAD COVERED BUTTER DISH - DK. BLUE OPAL. (EXTREMELY RARE COLOR; GREAT OPAL.)
98. DUGAN DIAMOND SPEARHEAD CELERY VASE - DK. BLUE OPAL. (EXTREMELY RARE; GREAT OPAL.)
99. DUGAN DIAMOND SPEARHEAD SPOONER - DK. BLUE OPAL. (EXTREMELY RARE; GREAT OPAL.)
100. (7) DUGAN DIAMOND SPEARHEAD INDIVIDUAL BERRY BOWLS - DK. BLUE OPAL. (VERY SCARCE; SOLD PER EACH FOR SET)
101. DUGAN DIAMOND SPEARHEAD CELERY VASE - GREEN OPAL. (RARE ITEM; GREAT OPAL.)
102. DUGAN DIAMOND SPEARHEAD STEMMED GOBLET - GREEN OPAL.; RARE ITEM; GREAT OPAL.)
103. DUGAN DIAMOND SPEARHEAD SPOONER - GREEN OPAL. (VERY SCARCE; GREAT OPAL.)
104. 2 3/4" X 7 1/2" DIAMETER DUGAN DIAMOND SPEARHEAD ODD FLARED BOWL - GREEN OPAL. (VERY RARE AND UNUSUAL SIZE; NICE OPAL.)
105. Dugan Diamond Spearhead Salt Shaker (no lid) - Vaseline Opal. (rare item; a bit cloudy)
106. Dugan Diamond Spearhead Handled Mug - Vaseline Opal. (scarce)
107. Dugan Diamond Spearhead Toothpick Holder - Green Opal. (scarce; perfect)
108. Dugan Diamond Spearhead Handled Mug - Green Opal. (etched "Sarah Hoadly - 1900")
109. Dugan Diamond Spearhead Handled Mug - Green Opal.
110. DUGAN THUMBPRINT STRETCH STEMMED RUFFLED COMPOTE - COBALT BLUE (EXTREMELY RARE ITEM; DARK COLOR AND GREAT STRETCH EFFECT)
111. DUGAN THUMBPRINT STRETCH STEMMED RUFFLED COMPOTE - WISTERIA (AMY.) (EXTREMELY RARE; UNUSUAL COLOR)
112. DUGAN THUMBPRINT STEMMED RUFFLED COMPOTE - BLUE (RARE COLOR FOR THIS PATTERN)
113. Dugan Thumbprint Stemmed Ruffled Compote - P. Opal. (the common one)
114. (2) Dugan Grapevine Lattice Tumblers - Dk. Mari. (scarce; great color; sold per each for pair)
115. DUGAN CIRCLE SCROLL TUMBLER - PUR. (EX-315) TREMELY RARE ITEM; GREAT COLOR AND IRID.)
116. DUGAN QUILL TUMBLER - DK. MARI. (RARE PATTERN; NICE DARK COLOR AND IRID.)
117. Dugan Maple Leaf Spooner - Pur.
118. Dugan Maple Leaf Stemmed Master Berry Bowl - Green Opal. (not carnival; haven't seen another one!)
119. Dugan Nautilus Open Sugar Novelty - Pur. (rare; chip on base)
120. UNUSUAL DUGAN BORDER PLANTS DOMED RUFFLED TURNED IN ROSE BOWL - PUR. (RARE PATTERN IN A VERY UNUSUAL SHAPE - NEAT!)
121. Dugan Persian Garden Fruit Bowl Base Only - Blue (scarce item; polished flake on top edge)
122. Dugan Grape Delight ftd. Rose Bowl - Pur. (nice color)
123. Dugan Single Flower Exterior Ruffled Bowl - P. Opal. (nice opal.)
124. Dugan Pony Ruffled Bowl - Mari. (nice color)
125. 10" DUGAN SKI STAR LARGE RUFFLED BOWL WITH COMPASS EXTERIOR - PUR. (VERY SCARCE; SUPER MULTI-COLORED IRID.)
126. 10" Dugan Ski Star Large Ruffled Bowl with Compass Exterior - P. Opal. (nice opal.)
127. 10" DUGAN HEAVY GRAPE LARGE RUFFLED BOWL WITH COMPASS EXTERIOR - PUR. (VERY SCARCE PATTERN; REALLY NICE COLOR!)
128. 5 3/4" Dugan Wishbone and Spades Ruffled Sauce - Pur. (scarce; nice color and irid.)
129. 5 3/4" Dugan Garden Path Variant Ruffled Sauce with Crackle Exterior - Pur. (scarce item)
130. UNUSUAL DUGAN FOUR FLOWERS RUFFLED 2 SIDED BANANA DISH - PUR. (RARE SHAPE FOR THIS ITEM; SUPER COLOR)
131. UNUSUAL DUGAN WISHBONE AND SPADES RUFFLED 2 SIDED BANANA DISH - P. OPAL. (ANOTHER RARE SHAPE; NICE IRID. AND OPAL.)
132. 10" DUGAN PETAL AND FAN LARGE RUFFLED BOWL WITH JEWELLED HEART EXTERIOR - PUR. (VERY SCARCE COLOR FOR THIS ITEM; NICE IRID.)
133. Dugan Cherry Wreath Water Pitcher - Mari. (scarce; large chip on base)
134. DUGAN FISHNET SINGLE LILY EPERGNE - P. OPAL. (VERY SCARCE; NICE IRID. AND OPAL.)
135. 9" DUGAN VINTAGE DOMED RUFFLED BOWL - GREEN (VERY RARE COLOR FOR THIS ITEM; ONLY ONE I'VE SEEN!)
136. 8 1/4" Dugan Apple Blossom Twig Plate - P. Opal. (scarce; has basketweave exterior; slightly turned up)
137. Dugan Flowers and Frames domed Tri-cornered Crimped Edge Bowl - P. Opal. (scarce; nice opal.)
138. Dugan Rambler Rose Tumbler - Mari.
139. Dugan G & C Perfume Bottle - no Stopper - Lt. Mari.
140. DUGAN FORMAL JACK IN THE PULPIT VASE - LT. MARI. (RARE ITEM; LIGHT COLOR BUT NICE)
141. Dugan Circle Scroll Swung Vase - Pur. (scarce shape for this item)
142. Dugan Circle Scroll Swung Vase - Mari. (scarce shape)
143. Dugan Argonaut Shell Swung Vase - Dk. Mari. (really nice but has chip on base)
144. Dugan Blossom and Web Domed Ruffled Bowl - Clear Opal. / Goofus (not carnival)
145. Dugan Floral Exterior Handled Basket (Intaglio Line) - Clear Opal. / Goofus (not carnival)
146. Dugan Floral Exterior Handled Basket (Intaglio Line) - Clear Opal. / Goofus
147. Dugan Open Opals Stemmed Pinched In Compote - Blue Opal. (not carnival)
148. Piasa Bird Swung Vase - Blue Opal. (scarce novelty)
149. Piasa Bird Squatty Swung Vase - Blue Opal. (scarce)
150. 7" X 10" WAVECREST WALL PLAQUE WITH WOODEN SCENE, 2 DEER IN DISTANCE - GREEN TRIM (REF: F. MONROE BOOK, PG. 114, PLAQUE ON RIGHT; SUPER RARE AND NEAT!)
151. 7 1/4" FLORAL WAVECREST ROUND HANGING WALL PLAQUE (MOLD REF: C. F. MONROE BOOK, PG. 115 BOTTOM & PG. 117 TOP)
152. MT. WASHINGTON BURMESE TRI-CORNERED ENAMELLED DECORATED TOOTHPICK (REF: HEACOCK'S 1000 T/P'S - FIG. #4)
153. SMITH BROS. COLUMNED RIBS ENAMELLED DECORATED TOOTHPICK HOLDER (RARE; NICE DECOR.)
154. Dugan Jewelled Heart Toothpick Holder and Condiment Tray - Crystal Blue (rare; selling both items)
155. NORTHWOOD WILD BOUQUET ENAMELLED DECORATED TOOTHPICK HOLDER - CUSTARD (EXTREMELY RARE; REALLY NICE DECORATION)
156. NORTHWOOD ARGONAUT SHELL TOOTHPICK HOLDER WITH GOLD AND GREEN DECORATION - CUSTARD (VERY RARE; NICE DECORATION)



- \_\_\_ 157. U.S. Glass Geneva 3 ftd. Toothpick Holder - Custard / Green Stain (rare; slightly rough on feet)
- \_\_\_ 158. Tarentum Georgia Gem 4 ftd. Toothpick Holder - Custard (scarce)
- \_\_\_ 159. Consolidated Bulging Loops Toothpick Holder - Pink Cased (chipped on top edge but scarce)
- \_\_\_ 160. **EUROPEAN PSEUDO - CAMEO TOOTHPICK HOLDER - PINK / ENAMELLED DECORATION (RARE ITEM; ON COVER OF RARE TOOTHPICK BOOK)**
- \_\_\_ 161. **OPALESCENT WINDOWS TOOTHPICK HOLDER - CRANBERRY OPAL. (VERY DESIRABLE; NICE)**
- \_\_\_ 162. Northwood Royal Ivy Toothpick Holder - Rubina (very scarce)
- \_\_\_ 163. Northwood Royal Ivy Toothpick Holder - Rubina / Frosted (chipped on top edge; very scarce)
- \_\_\_ 164. **NORTHWOOD LEAF MOLD TOOTHPICK HOLDER - CASED CRANBERRY SPATTER (VERY DESIRABLE PATTERN; NICE)**
- \_\_\_ 165. Hobb's Pillar Toothpick Holder - Frosted Cranberry Spatter (scarce)
- \_\_\_ 166. Northwood Scroll with Acanthus Toothpick Holder - Green with Enamelled Decor. (very scarce; nice decoration)
- \_\_\_ 167. Jefferson's #270 (Colonial) Toothpick Holder - Apple Green
- \_\_\_ 168. Jefferson's #270 (Colonial) Toothpick Holder - Apple Green
- \_\_\_ 169. Riverside X-Ray Toothpick Holder - Green with Gold
- \_\_\_ 170. **NORTHWOOD SHELL TOOTHPICK HOLDER - GREEN OPAL. (EXTREMELY RARE; CHIPPED ON ONE FOOT)**
- \_\_\_ 171. Challinor Forget Me Not Toothpick Holder - Green Opaque
- \_\_\_ 172. Consolidated (Fostoria, Oh.) Shell and Seaweed Toothpick Holder - Green Opaque (scarce)
- \_\_\_ 173. Jefferson's Iris Meander Toothpick Holder - Clear Opal.
- \_\_\_ 174. U.S. Glass Over - All Hobnail ftd. Toothpick Holder - Blue Opal.
- \_\_\_ 175. Model Flint Glass Ribbed Spiral Toothpick Holder - Blue Opal.
- \_\_\_ 176. Beatty & Sons Beatty Ribbed Opal. Toothpick Holder - Blue Opal.
- \_\_\_ 177. U.S. Glass Colorado ftd. Toothpick Holder - Blue with Gold (scarce; nice gold decor.)
- \_\_\_ 178. Jefferson's Iris Meander Toothpick Holder - Blue with Worn Gold
- \_\_\_ 179. National's Scalloped Skirt Toothpick Holder - Blue with Enamelled Decor. (scarce; nice decor.)
- \_\_\_ 180. Jefferson's Swag with Brackets Toothpick Holder - Blue with Gold (scarce; nice decor.)
- \_\_\_ 181. U.S. Glass Virginia (Galloway) Toothpick Holder - Blue with Gold (scarce color; nice gold)
- \_\_\_ 182. Beaumont Glass Co.'s Flora Toothpick Holder - Crystal with Gold Decor.
- \_\_\_ 183. Cambridge Inverted Feather Toothpick Holder - Crystal
- \_\_\_ 184. U.S. Glass Banded Portland Toothpick Holder - Crystal with Green Stain
- \_\_\_ 185. **N MEMPHIS TOOTHPICK HOLDER - CRYSTAL (EXTREMELY SCARCE; NOT MANY KNOWN)**
- \_\_\_ 186. M'burg Ohio Star Handled Toothpick Holder - Crystal
- \_\_\_ 187. Fenton Kittens Large Toothpick Holder - Mari. (large chip off base)
- \_\_\_ 188. Fostoria Long Buttress Toothpick Holder - Lt. Mari.
- \_\_\_ 189. **WESTMORELAND SPEC. CO. 1905 SHRINERS WOODEN BARREL TOOTHPICK HOLDER - PUR. WITH GOLD (NOT IRID.; VERY RARE ITEM; HAS ORIGINAL LABEL ON BOTTOM)**

- \_\_\_ 190. **FENTON ARCHED FLUTE (IRID. URN) STRETCH TOOTHPICK HOLDER - WISTERIA (EXTREMELY RARE COLOR; NICE)**
- \_\_\_ 191. U.S. Glass Arched Ovals Toothpick Holder - Frosted Cranberry Flash (scarce; has chip on base)
- \_\_\_ 192. Tiny Thumbprint Large Toothpick Holder, "Souvenir of Akron, Ohio - Mari. (scarce)
- \_\_\_ 193. Heisey Ring Band Toothpick - Custard (Chip)
- \_\_\_ 194. Heisey Winged Scroll Flared Toothpick Holder - Crystal
- \_\_\_ 195. Heisey Colonial-Type Toothpick Holder with Floral Enamel and Black Banded Trim - Crystal
- \_\_\_ 196. U.S. Glass Minnesota 3 Handled Toothpick Holder - Crystal
- \_\_\_ 197. U.S. Glass Portland Toothpick Holder - Crystal
- \_\_\_ 198. Interior Panelled "Shot Glass" Toothpick Holder - Green Opal.
- \_\_\_ 199. Iron Cross Shaped U.S. Glass Advertising Piece - Crystal ("Boston 1895 - Pittsburg 1898 - U.S. Glass Co.")
- \_\_\_ 200. Glass Ashtray with Floral Decor. "Compliments of United States Glass Co., Pittsburg, Pa." - Crystal

### START OF SECOND SESSION

- \_\_\_ 201. N Plain Stemmed Ruffled Compote - Dk. Mari.
- \_\_\_ 202. N Lattice and Poinsettia ftd. Ruffled Bowl with Ribbed Exterior - Mari. (chip off one point)
- \_\_\_ 203. N G & C Tankard Tumbler - Amy. (scarce)
- \_\_\_ 204. (4) N Raspberry Tumblers - Dk. Mari. (nice color; sold per each for set)
- \_\_\_ 205. **N SINGING BIRD WATER PITCHER - PUR. (SUPER COLOR; SCARCE)**
- \_\_\_ 206. N Singing Bird Tumbler - Dk. Mari. (nice color)
- \_\_\_ 207. N Memphis Punch Base Only - Blue (tough part)
- \_\_\_ 208. N G & C Variant Ruffled Bowl with Plain Exterior - Pur. (super color and irid.)
- \_\_\_ 209. N Good Luck Bowl with Pie Crust Edge and Ribbed Exterior - Dk. Mari. (super color; scarce)
- \_\_\_ 210. **N BEADED CABLE FTD. ROSE BOWL - ICE GREEN (VERY RARE ITEM; TOUGH TO FIND)**
- \_\_\_ 211. **N BEADED CABLE FTD. ROSE BOWL - WHITE (VERY SCARCE; NICE ITEM)**
- \_\_\_ 212. N Leaf and Beads ftd. Rose Bowl - Blue Opal. (not carnival)
- \_\_\_ 213. N Leaf and Beads ftd. Rose Bowl - Clear Opal. (not carnival)
- \_\_\_ 214. N Leaf and Beads ftd. Rose Bowl - Dk. Mari. (nice color)
- \_\_\_ 215. N Leaf and Beads ftd. Rose Bowl with Ribbed Interior - Ice Blue (cracked but rare)
- \_\_\_ 216. **N DAISY AND PLUME FTD. ROSE BOWL WITH BERRY INTERIOR - WHITE (RARE ITEM; A CHIP OR 2 ON FEET)**
- \_\_\_ 217. N Memphis Punch Cup - Ice Blue (scarce)
- \_\_\_ 218. N Plain Interior / Ribbed Exterior Flared Out Stretch Stemmed Compote - Blue Opaque
- \_\_\_ 219. N Diamond Point Swung Vase - Pur.
- \_\_\_ 220. **N DANDELION / KNIGHTS TEMPLAR MUG - ICE BLUE (VERY RARE WITH GREAT IRID.)**
- \_\_\_ 221. N Dandelion / Knights Templar Mug - Ice Green (chip on base but rare; nice color)
- \_\_\_ 222. **N DANDELION MUG - GREEN (VERY RARE WITH NICE COLOR AND IRID.)**
- \_\_\_ 223. **N DANDELION MUG - AQUA OPAL. (RARE; REALLY NICE OPAL.)**
- \_\_\_ 224. **N DANDELION / KNIGHTS TEMPLAR MUG - DK. MARI. (SUPER SCARCE AND SUPER COLOR)**



225. N DANDELION MUG - REALLY DK. MARI. (SUPER SCARCE; SUPER COLOR)
226. N DANDELION MUG - BLUE (NICE RARE COLOR)
227. N DANDELION MUG - PUR. (VERY SCARCE; NICE COLOR AND IRID.)
228. N Dandelion Mug - Custard / Nutmeg (scarce item; nice decor.)
229. N Grape Arbor Tumbler - White (very scarce)
230. N DANDELION TUMBLER WITH RIBBED INTERIOR - LIME ICE GREEN (EXTREMELY RARE COLOR; A NICE ITEM)
231. N GRAPE ARBOR TUMBLER WITH RIBBED INTERIOR - ICE GREEN (SMOOTHED A BIT ON THE BASE BUT EXTREMELY RARE WITH NICE COLOR)
232. N DANDELION TUMBLER WITH PLAIN INTERIOR - WHITE (VERY RARE; NICE COLOR AND IRID.)
233. N RASPBERRY TUMBLER - ICE BLUE (EXTREMELY RARE; NICE COLOR AND IRID.)
234. N PEACH TUMBLER - ELEC. BLUE (RARE; NICE COLOR AND DETAIL)
235. N RASPBERRY TUMBLER - HOREHOUND (EXTREMELY RARE COLOR FOR THIS ITEM)
236. N Oriental Poppy Tumbler - Pur. (nice irid.)
237. N Oriental Poppy Tumbler - Green (scarce; nice irid.)
238. N G & C TUMBLER - GREEN / DK. MARI. (RARE COLOR FOR THIS ITEM)
239. N Singing Bird Mug - Blue Opal. (not carnival; very scarce)
240. N SINGING BIRD MUG - LAVENDER (RARE COLOR; NICE IRID.)
241. N Stippled Singing Bird Mug - Dk. Mari. (really nice color; very scarce)
242. N PEACOCKS RUFFLED BOWL WITH RIBBED EXTERIOR - BLUE OPAL. (NOT CARNIVAL BUT VERY DESIRABLE)
243. N Heart and Flowers Ruffled Bowl with Basketweave Exterior - Pur. (very scarce; has manuf. finish area)
244. N THREE FRUITS DOMED RUFFLED BOWL WITH BASKETWEAVE EXTERIOR - WHITE (VERY SCARCE; NICE)
245. N G & C FTD. BANANA BOAT - GREEN (VERY SCARCE; REALLY NICE COLOR AND IRID.)
246. N Wishbone Epergne Base Only - Ice Green (extremely rare piece - where's the lily?!?)
247. N Wishbone Epergne Base Only - White (another one - where's the lily?!?)
248. 10" N Wishbone Bowl with Pie Crust Edge and Basketweave Exterior - Mari.
- 248A. N WISHBONE FTD. PLATE WITH RUFFLES AND RINGS EXTERIOR - PUR. (RARE WITH NICE COLOR AND IRID.; NICE ITEM)
249. N Drapery Swung Vase - Ice Green (chips on 2 feet)
250. N INTERIOR COINSPOT 7 RUFFLED BULBOUS WATER PITCHER - BLUE OPAL. (EXTREMELY RARE; MOLD BLOWN AND SIGNED WITH CIRCLE N; REF: CRANBERRY BOOK, PG. 37, HEACOCK)
251. N COINSPOT 9 PANEL HANDLED SYRUP JUG - SIGNED NORTHWOOD - BLUE OPAL. (SUPER RARE; SIGNED BLOCK LETTERS)
252. N COINSPOT 9 PANEL HANDLED SYRUP JUG - SIGNED NORTHWOOD - CLEAR OPAL. (SUPER RARE; ALSO SIGNED IN BLOCK LETTERS)
253. N INTAGLIO WATER PITCHER - BLUE OPAL. (VERY SCARCE ITEM; NICE OPAL.)
254. N PANELLED HOLLY COVERED BUTTER DISH - BLUE OPAL. (VERY RARE ITEM; NICE)
255. N ALASKA 4 PC. TABLE SET - BLUE OPAL. (SUPER SCARCE SET; VERY DESIRABLE)
256. N ALASKA CRUET WITH ENAMELLED DECORATION - BLUE OPAL. (RARE ITEM WITH REALLY NICE DECORATION)
257. N Alaska Covered Sugar Bowl with Enamelled Decoration - Vaseline Opal. (very scarce; nice item)
258. N ALASKA 4 PC. TABLE SET - VASELINE OPAL. (SUPER SCARCE SET; NICE COLOR AND OPAL.)
259. N Reverse Swirl Sugar Shaker - Vaseline Opal.
260. HOBBS GONTERMAN SWIRL WATER PITCHER - AMBER / OPAL. (RARE EARLY LINE OF GLASS; GREAT COLOR)
261. HOBBS GONTERMAN SWIRL TUMBLER - AMBER / OPAL. (VERY RARE ITEM; GREAT COLOR)
262. HOBBS GONTERMAN SWIRL TOOTHPICK HOLDER - AMBER / OPAL. (RARE AND VERY DESIRABLE; NICE COLOR)
263. Hobb's Gonterman Swirl Spooner - Amber / Opal. (very scarce item)
264. N Coinspot 9 Panel Sugar Shaker - Blue (scarce)
265. N HOBNAIL AND PANELLED THUMBPRINT 6 PC. WATER SET - VASELINE OPAL. (RARE SET; VERY ATTRACTIVE AND NICE)
266. N Hobnail and Panelled Thumbprint Spooner - Vaseline Opal. (scarce; nice)
267. U.S. Glass Palm Beach Covered Sugar Bowl - Vaseline Opal. (very scarce; nice opal.)
268. U.S. Glass Palm Beach Spooner - Vaseline Opal. (scarce)
269. N Regal Celery Vase - Green Opal. (chip on base)
270. N DRAPERY WATER PITCHER - BLUE OPAL. (SCARCE PRETTY NICE GOLD DECOR.)
271. N Wild Bouquet Covered Sugar Bowl - Blue Opal. (very scarce item if ya need it!)
272. N Wild Bouquet Creamer - Blue Opal. (very scarce)
273. N Wild Bouquet Spooner - Blue Opal. (very scarce)
274. N Wild Bouquet Stemmed Jelly Compote - Clear Opal. (scarce)
275. N CIRCLE SCROLL COVERED BUTTER DISH - GREEN OPAL. (RARE ITEM; NICE)
276. N Circle Scroll Creamer - Green Opal. (very scarce; nice)
277. N Argonaut Shell Tumbler - Blue Opal. (scarce)
278. N Jewelled Heart Tumbler - Blue Opal. (scarce)
279. N Intaglio Stemmed Jelly Compote - Vaseline Opal.
280. FENTON WATERLILY AND CATTAIL 4 PC. TABLE SET - GREEN OPAL. (VERY SCARCE SET; HARD TO FIND COMPLETE)
281. FENTON HONEYCOMB AND CLOVER WATER PITCHER - BLUE OPAL. (VERY SCARCE ITEM)
282. FENTON HONEYCOMB AND CLOVER WATER PITCHER - GREEN OPAL. (VERY SCARCE; LIGHT OPAL.)
283. N Fluted Scrolls Covered Butter Dish - Blue Opal. (very scarce)
284. (2) N Fluted Scrolls Cruets with Crystal Stoppers - Blue Opal. (selling choice; nice opal.)
285. HOBBS SEAWEED SQUARE MOLD BARBER BOTTLE - BLUE OPAL. (REALLY GREAT ITEM; NICE COLOR AND OPAL.)
286. Albany Glass Co. Wreath and Shell ftd. Celery Vase - Lime Green Opal. (scarce; odd tint color)
287. N Beaded Acanthus Stemmed Jelly Compote - Blue Opal.
288. BEAUMONT OPAL. FERN SUGAR SHAKER - BLUE OPAL. (VERY SCARCE; GREAT COLOR AND OPAL.)



- \_\_\_ 157. U.S. Glass Geneva 3 ftd. Toothpick Holder - Custard / Green Stain (rare; slightly rough on feet)
- \_\_\_ 158. Tarentum Georgia Gem 4 ftd. Toothpick Holder - Custard (scarce)
- \_\_\_ 159. Consolidated Bulging Loops Toothpick Holder - Pink Cased (chipped on top edge but scarce)
- \_\_\_ 160. **EUROPEAN PSEUDO - CAMEO TOOTHPICK HOLDER - PINK / ENAMELLED DECORATION (RARE ITEM; ON COVER OF RARE TOOTHPICK BOOK)**
- \_\_\_ 161. **OPALESCENT WINDOWS TOOTHPICK HOLDER - CRANBERRY OPAL. (VERY DESIRABLE; NICE)**
- \_\_\_ 162. Northwood Royal Ivy Toothpick Holder - Rubina (very scarce)
- \_\_\_ 163. Northwood Royal Ivy Toothpick Holder - Rubina / Frosted (chipped on top edge; very scarce)
- \_\_\_ 164. **NORTHWOOD LEAF MOLD TOOTHPICK HOLDER - CASED CRANBERRY SPATTER (VERY DESIRABLE PATTERN; NICE)**
- \_\_\_ 165. Hobb's Pillar Toothpick Holder - Frosted Cranberry Spatter (scarce)
- \_\_\_ 166. Northwood Scroll with Acanthus Toothpick Holder - Green with Enamelled Decor. (very scarce; nice decoration)
- \_\_\_ 167. Jefferson's #270 (Colonial) Toothpick Holder - Apple Green
- \_\_\_ 168. Jefferson's #270 (Colonial) Toothpick Holder - Apple Green
- \_\_\_ 169. Riverside X-Ray Toothpick Holder - Green with Gold
- \_\_\_ 170. **NORTHWOOD SHELL TOOTHPICK HOLDER - GREEN OPAL. (EXTREMELY RARE; CHIPPED ON ONE FOOT)**
- \_\_\_ 171. Challinor Forget Me Not Toothpick Holder - Green Opaque
- \_\_\_ 172. Consolidated (Fostoria, Oh.) Shell and Seaweed Toothpick Holder - Green Opaque (scarce)
- \_\_\_ 173. Jefferson's Iris Meander Toothpick Holder - Clear Opal.
- \_\_\_ 174. U.S. Glass Over - All Hobnail ftd. Toothpick Holder - Blue Opal.
- \_\_\_ 175. Model Flint Glass Ribbed Spiral Toothpick Holder - Blue Opal.
- \_\_\_ 176. Beatty & Sons Beatty Ribbed Opal. Toothpick Holder - Blue Opal.
- \_\_\_ 177. U.S. Glass Colorado ftd. Toothpick Holder - Blue with Gold (scarce; nice gold decor.)
- \_\_\_ 178. Jefferson's Iris Meander Toothpick Holder - Blue with Worn Gold
- \_\_\_ 179. National's Scalloped Skirt Toothpick Holder - Blue with Enamelled Decor. (scarce; nice decor.)
- \_\_\_ 180. Jefferson's Swag with Brackets Toothpick Holder - Blue with Gold (scarce; nice decor.)
- \_\_\_ 181. U.S. Glass Virginia (Galloway) Toothpick Holder - Blue with Gold (scarce color; nice gold)
- \_\_\_ 182. Beaumont Glass Co.'s Flora Toothpick Holder - Crystal with Gold Decor.
- \_\_\_ 183. Cambridge Inverted Feather Toothpick Holder - Crystal
- \_\_\_ 184. U.S. Glass Banded Portland Toothpick Holder - Crystal with Green Stain
- \_\_\_ 185. **N MEMPHIS TOOTHPICK HOLDER - CRYSTAL (EXTREMELY SCARCE; NOT MANY KNOWN)**
- \_\_\_ 186. M'burg Ohio Star Handled Toothpick Holder - Crystal
- \_\_\_ 187. Fenton Kittens Large Toothpick Holder - Mari. (large chip off base)
- \_\_\_ 188. Fostoria Long Buttress Toothpick Holder - Lt. Mari.
- \_\_\_ 189. **WESTMORELAND SPEC. CO. 1905 SHRINERS WOODEN BARREL TOOTHPICK HOLDER - PUR. WITH GOLD (NOT IRID.; VERY RARE ITEM; HAS ORIGINAL LABEL ON BOTTOM)**

- \_\_\_ 190. **FENTON ARCHED FLUTE (IRID. URN) STRETCH TOOTHPICK HOLDER - WISTERIA (EXTREMELY RARE COLOR; NICE)**
- \_\_\_ 191. U.S. Glass Arched Ovals Toothpick Holder - Frosted Cranberry Flash (scarce; has chip on base)
- \_\_\_ 192. Tiny Thumbprint Large Toothpick Holder, "Souvenir of Akron, Ohio - Mari. (scarce)
- \_\_\_ 193. Heisey Ring Band Toothpick - Custard (Chip)
- \_\_\_ 194. Heisey Winged Scroll Flared Toothpick Holder - Crystal
- \_\_\_ 195. Heisey Colonial-Type Toothpick Holder with Floral Enamel and Black Banded Trim - Crystal
- \_\_\_ 196. U.S. Glass Minnesota 3 Handled Toothpick Holder - Crystal
- \_\_\_ 197. U.S. Glass Portland Toothpick Holder - Crystal
- \_\_\_ 198. Interior Panelled "Shot Glass" Toothpick Holder - Green Opal.
- \_\_\_ 199. Iron Cross Shaped U.S. Glass Advertising Piece - Crystal ("Boston 1895 - Pittsburg 1898 - U.S. Glass Co.")
- \_\_\_ 200. Glass Ashtray with Floral Decor. "Compliments of United States Glass Co., Pittsburg, Pa." - Crystal

#### START OF SECOND SESSION

- \_\_\_ 201. N Plain Stemmed Ruffled Compote - Dk. Mari.
- \_\_\_ 202. N Lattice and Poinsettia ftd. Ruffled Bowl with Ribbed Exterior - Mari. (chip off one point)
- \_\_\_ 203. N G & C Tankard Tumbler - Amy. (scarce)
- \_\_\_ 204. (4) N Raspberry Tumblers - Dk. Mari. (nice color; sold per each for set)
- \_\_\_ 205. **N SINGING BIRD WATER PITCHER - PUR. (SUPER COLOR; SCARCE)**
- \_\_\_ 206. N Singing Bird Tumbler - Dk. Mari. (nice color)
- \_\_\_ 207. N Memphis Punch Base Only - Blue (tough part)
- \_\_\_ 208. N G & C Variant Ruffled Bowl with Plain Exterior - Pur. (super color and irid.)
- \_\_\_ 209. N Good Luck Bowl with Pie Crust Edge and Ribbed Exterior - Dk. Mari. (super color; scarce)
- \_\_\_ 210. **N BEADED CABLE FTD. ROSE BOWL - ICE GREEN (VERY RARE ITEM; TOUGH TO FIND)**
- \_\_\_ 211. **N BEADED CABLE FTD. ROSE BOWL - WHITE (VERY SCARCE; NICE ITEM)**
- \_\_\_ 212. N Leaf and Beads ftd. Rose Bowl - Blue Opal. (not carnival)
- \_\_\_ 213. N Leaf and Beads ftd. Rose Bowl - Clear Opal. (not carnival)
- \_\_\_ 214. N Leaf and Beads ftd. Rose Bowl - Dk. Mari. (nice color)
- \_\_\_ 215. N Leaf and Beads ftd. Rose Bowl with Ribbed Interior - Ice Blue (cracked but rare)
- \_\_\_ 216. **N DAISY AND PLUME FTD. ROSE BOWL WITH BERRY INTERIOR - WHITE (RARE ITEM; A CHIP OR 2 ON FEET)**
- \_\_\_ 217. N Memphis Punch Cup - Ice Blue (scarce)
- \_\_\_ 218. N Plain Interior / Ribbed Exterior Flared Out Stretch Stemmed Compote - Blue Opaque
- \_\_\_ 219. N Diamond Point Swung Vase - Pur.
- \_\_\_ 220. **N DANDELION / KNIGHTS TEMPLAR MUG - ICE BLUE (VERY RARE WITH GREAT IRID.)**
- \_\_\_ 221. N Dandelion / Knights Templar Mug - Ice Green (chip on base but rare; nice color)
- \_\_\_ 222. **N DANDELION MUG - GREEN (VERY RARE WITH NICE COLOR AND IRID.)**
- \_\_\_ 223. **N DANDELION MUG - AQUA OPAL. (RARE; REALLY NICE OPAL.)**
- \_\_\_ 224. **N DANDELION / KNIGHTS TEMPLAR MUG - DK. MARI. (SUPER SCARCE AND SUPER COLOR)**



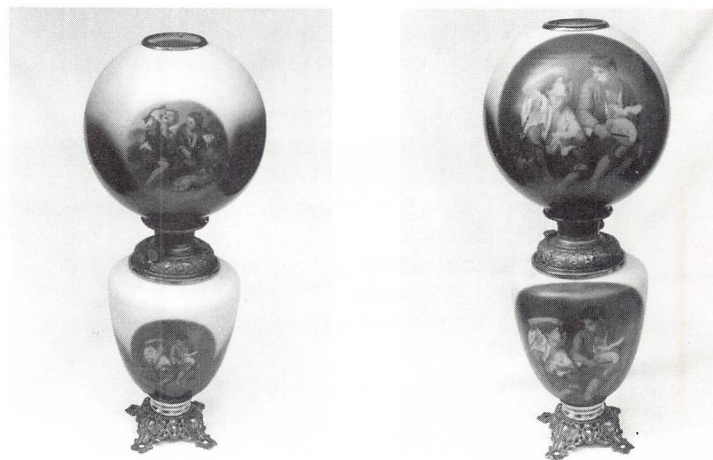
225. N DANDELION MUG - REALLY DK. MARI. (SUPER SCARCE; SUPER COLOR)
226. N DANDELION MUG - BLUE (NICE RARE COLOR)
227. N DANDELION MUG - PUR. (VERY SCARCE; NICE COLOR AND IRID.)
228. N Dandelion Mug - Custard / Nutmeg (scarce item; nice decor.)
229. N Grape Arbor Tumbler - White (very scarce)
230. N DANDELION TUMBLER WITH RIBBED INTERIOR - LIME ICE GREEN (EXTREMELY RARE COLOR; A NICE ITEM)
231. N GRAPE ARBOR TUMBLER WITH RIBBED INTERIOR - ICE GREEN (SMOOTHED A BIT ON THE BASE BUT EXTREMELY RARE WITH NICE COLOR)
232. N DANDELION TUMBLER WITH PLAIN INTERIOR - WHITE (VERY RARE; NICE COLOR AND IRID.)
233. N RASPBERRY TUMBLER - ICE BLUE (EXTREMELY RARE; NICE COLOR AND IRID.)
234. N PEACH TUMBLER - ELEC. BLUE (RARE; NICE COLOR AND DETAIL)
235. N RASPBERRY TUMBLER - HOREHOUND (EXTREMELY RARE COLOR FOR THIS ITEM)
236. N Oriental Poppy Tumbler - Pur. (nice irid.)
237. N Oriental Poppy Tumbler - Green (scarce; nice irid.)
238. N G & C TUMBLER - GREEN / DK. MARI. (RARE COLOR FOR THIS ITEM)
239. N Singing Bird Mug - Blue Opal. (not carnival; very scarce)
240. N SINGING BIRD MUG - LAVENDER (RARE COLOR; NICE IRID.)
241. N Stippled Singing Bird Mug - Dk. Mari. (really nice color; very scarce)
242. N PEACOCKS RUFFLED BOWL WITH RIBBED EXTERIOR - BLUE OPAL. (NOT CARNIVAL BUT VERY DESIRABLE)
243. N Heart and Flowers Ruffled Bowl with Basketweave Exterior - Pur. (very scarce; has manuf. finish area)
244. N THREE FRUITS DOMED RUFFLED BOWL WITH BASKETWEAVE EXTERIOR - WHITE (VERY SCARCE; NICE)
245. N G & C FTD. BANANA BOAT - GREEN (VERY SCARCE; REALLY NICE COLOR AND IRID.)
246. N Wishbone Epergne Base Only - Ice Green (extremely rare piece - where's the lily?!?)
247. N Wishbone Epergne Base Only - White (another one - where's the lily?!?)
248. 10" N Wishbone Bowl with Pie Crust Edge and Basketweave Exterior - Mari.
- 248A. N WISHBONE FTD. PLATE WITH RUFFLES AND RINGS EXTERIOR - PUR. (RARE WITH NICE COLOR AND IRID.; NICE ITEM)
249. N Drapery Swung Vase - Ice Green (chips on 2 feet)
250. N INTERIOR COINSPOT 7 RUFFLED BULBOUS WATER PITCHER - BLUE OPAL. (EXTREMELY RARE; MOLD BLOWN AND SIGNED WITH CIRCLE N; REF: CRANBERRY BOOK, PG. 37, HEACOCK)
251. N COINSPOT 9 PANEL HANDLED SYRUP JUG - SIGNED NORTHWOOD - BLUE OPAL. (SUPER RARE; SIGNED BLOCK LETTERS)
252. N COINSPOT 9 PANEL HANDLED SYRUP JUG - SIGNED NORTHWOOD - CLEAR OPAL. (SUPER RARE; ALSO SIGNED IN BLOCK LETTERS)
253. N INTAGLIO WATER PITCHER - BLUE OPAL. (VERY SCARCE ITEM; NICE OPAL.)
254. N PANELLED HOLLY COVERED BUTTER DISH - BLUE OPAL. (VERY RARE ITEM; NICE)
255. N ALASKA 4 PC. TABLE SET - BLUE OPAL. (SUPER SCARCE SET; VERY DESIRABLE)
256. N ALASKA CRUET WITH ENAMELLED DECORATION - BLUE OPAL. (RARE ITEM WITH REALLY NICE DECORATION)
257. N Alaska Covered Sugar Bowl with Enamelled Decoration - Vaseline Opal. (very scarce; nice item)
258. N ALASKA 4 PC. TABLE SET - VASELINE OPAL. (SUPER SCARCE SET; NICE COLOR AND OPAL.)
259. N Reverse Swirl Sugar Shaker - Vaseline Opal.
260. HOBBS GONTERMAN SWIRL WATER PITCHER - AMBER / OPAL. (RARE EARLY LINE OF GLASS; GREAT COLOR)
261. HOBBS GONTERMAN SWIRL TUMBLER - AMBER / OPAL. (VERY RARE ITEM; GREAT COLOR)
262. HOBBS GONTERMAN SWIRL TOOTHPICK HOLDER - AMBER / OPAL. (RARE AND VERY DESIRABLE; NICE COLOR)
263. Hobb's Gonterman Swirl Spooner - Amber / Opal. (very scarce item)
264. N Coinspot 9 Panel Sugar Shaker - Blue (scarce)
265. N HOBNAIL AND PANELLED THUMBPRINT 6 PC. WATER SET - VASELINE OPAL. (RARE SET; VERY ATTRACTIVE AND NICE)
266. N Hobnail and Panelled Thumbprint Spooner - Vaseline Opal. (scarce; nice)
267. U.S. Glass Palm Beach Covered Sugar Bowl - Vaseline Opal. (very scarce; nice opal.)
268. U.S. Glass Palm Beach Spooner - Vaseline Opal. (scarce)
269. N Regal Celery Vase - Green Opal. (chip on base)
270. N DRAPERY WATER PITCHER - BLUE OPAL. (SCARCE PRETTY NICE GOLD DECOR.)
271. N Wild Bouquet Covered Sugar Bowl - Blue Opal. (very scarce item if ya need it!)
272. N Wild Bouquet Creamer - Blue Opal. (very scarce)
273. N Wild Bouquet Spooner - Blue Opal. (very scarce)
274. N Wild Bouquet Stemmed Jelly Compote - Clear Opal. (scarce)
275. N CIRCLE SCROLL COVERED BUTTER DISH - GREEN OPAL. (RARE ITEM; NICE)
276. N Circle Scroll Creamer - Green Opal. (very scarce; nice)
277. N Argonaut Shell Tumbler - Blue Opal. (scarce)
278. N Jewelled Heart Tumbler - Blue Opal. (scarce)
279. N Intaglio Stemmed Jelly Compote - Vaseline Opal.
280. FENTON WATERLILY AND CATTAIL 4 PC. TABLE SET - GREEN OPAL. (VERY SCARCE SET; HARD TO FIND COMPLETE)
281. FENTON HONEYCOMB AND CLOVER WATER PITCHER - BLUE OPAL. (VERY SCARCE ITEM)
282. FENTON HONEYCOMB AND CLOVER WATER PITCHER - GREEN OPAL. (VERY SCARCE; LIGHT OPAL.)
283. N Fluted Scrolls Covered Butter Dish - Blue Opal. (very scarce)
284. (2) N Fluted Scrolls Cruets with Crystal Stoppers - Blue Opal. (selling choice; nice opal.)
285. HOBBS SEAWEEED SQUARE MOLD BARBER BOTTLE - BLUE OPAL. (REALLY GREAT ITEM; NICE COLOR AND OPAL.)
286. Albany Glass Co. Wreath and Shell ftd. Celery Vase - Lime Green Opal. (scarce; odd tint color)
287. N Beaded Acanthus Stemmed Jelly Compote - Blue Opal.
288. BEAUMONT OPAL. FERN SUGAR SHAKER - BLUE OPAL. (VERY SCARCE; GREAT COLOR AND OPAL.)



289. Decorated Milk Glass Sugar Shaker
290. **EXTREMELY RARE SCROLL AND NET HANDLED SYRUP JUG - COBALT BLUE (EXTREMELY RARE COLOR; ONLY ONE KNOWN!)**
291. **McKEE SPEARPOINT BAND HANDLED SYRUP JUG - RUBY FLASH (VERY SCARCE; NICE STAIN)**
292. N Wild Bouquet Cruet and Stopper - Clear Opal. (scarce)
293. N Nestor Cruet and Stopper - Amy. with Decor. (very scarce item)
294. W. Va. Glass Co. I.O.U. Cruet and Stopper - Crystal Vaseline (very scarce item)
295. Beaumont Flora Celery Vase - Blue Opal. (scarce in this color)
296. Greensburg Glass Co. Sunk Honeycomb Cruet and Stopper - Ruby Flash (scarce)
297. N Panelled Sprig with Opal. Lattice Cruet and Stopper - Clear Opal.
298. Venetian Ribbon Glass Cruet and Stopper - White Opal. (scarce)
299. Heisey Cruet and Stopper (pattern?) - Pink Crystal (scarce)
300. Odd Deco Cruet and Stopper with Original Label - Amber Crystal (unusual item - maker?)
301. Heisey Rib and Panel Cruet with Crystal Stopper - Yellow (scarce)
302. Pair Depression Sharon Salt and Pepper Shakers - Amber
303. Pair Francisware Hobnail Salt and Pepper Shakers - Amber / Frosted (scarce shape)
304. N Scroll and Acanthus Salt Shaker - Apple Green / Decor. (scarce)
305. **PAIR CONSOLIDATED CRISS CROSS SALT AND PEPPER SHAKERS - CRANBERRY OPAL. (VERY RARE SET; NICE COLOR AND OPAL.)**
306. N Ribbed Lattice Salt Shaker - No Top - Cranberry Opal. (scarce; nice opal.)
307. Pair Jefferson Iris Meander Salt and Pepper Shakers - Blue Opal. (very scarce with great opal.)
308. Jefferson Tokyo Salt Shaker - Blue Opal. (very scarce; nice opal.)
309. Pair McKee Champion Salt and Pepper Shakers - Ruby Flash (scarce pair)
310. Hobb's Bulbous Base Optic Salt Shaker - Cranberry
311. Pair Consolidated Cased Leaf Pattern Salt and Pepper Shakers - Pink Cased
312. Pair Consolidated Squatty Florette Salt and Pepper Shakers - Pigeon Blood (very scarce)
313. Figural Sitting Shaggy Dog Salt Shaker - Crystal Frosted (very rare figural item; nice)
314. Pair Indiana Beaded Cable Circle Salt and Pepper Shakers - Crystal (rare pair)
315. **N REVERSE SWIRL COVERED BUTTER DISH - DK. BLUE OPAL. (RARE ITEM; NICE COLOR AND OPAL.)**
316. **BEATTY & SONS BEATTY RIBBED OPAL. WATER PITCHER - BLUE OPAL. (RARE ITEM; NICE COLOR AND OPAL.)**
317. N Spanish Lace Bulbous Ruffled Top Water Pitcher - Clear Opal. (rare item; nice color and opal.)
318. 11" N Spanish Lace Large Bulbous Vase - Clear Opal. (unusual item)
319. N Nestor Covered Butter Dish with Enamelled Decor. - Crystal Blue (very scarce)
320. **JEFFERSON (?) SWIRLING MAZE TUMBLER - CRANBERRY OPAL. (VERY SCARCE; GREAT COLOR)**
321. **BEAUMONT ARABIAN KNIGHTS TUMBLER - BLUE OPAL. (RARE PATTERN; GREAT COLOR)**
322. Fenton Waterlily and Cattail Tumbler - Dk. Blue Opal. (scarce)
323. Dugan Daisy and Lattice - Clear Opal. (scarce)
324. N Interior Poinsettia Tumbler - Green Opal. (scarce)
325. **N GRAPE ARBOR TUMBLER - CUSTARD WITH PINK STAIN (EXTREMELY RARE ITEM; GREAT DECOR.)**
326. N Inverted Fan and Feather Tumbler - Custard with Decor. (very scarce; nice decor.)
327. Dugan Fan Tumbler (Dahlia Blank) - Custard with Gold (very scarce; nice gold)
328. U.S. Glass Vermont Tumbler - Custard with Excellent Decor. (very scarce; really nice decor.)
329. U.S. Glass Big Button Water Pitcher - Amber Stained (scarce)
330. **McKEE TURKEY COVERED DISH - CHOCOLATE (EXTREMELY RARE ITEM; SHOULD BE A GOOD ONE)**
331. **GREENTOWN RACING DEER AND DOE WATER PITCHER - CHOCOLATE (VERY RARE; GREAT COLOR AND DETAIL; REALLY NICE)**
332. **GREENTOWN HERON WATER PITCHER - CHOCOLATE (VERY RARE ITEM; NICE COLOR; GOOD DETAIL)**
333. Greentown Cactus Toothpick Holder - Chocolate (scarce)
334. Greentown Cactus Salt Shaker - Chocolate (scarce)
335. **FENTON ORANGE TREE FTD. HATPIN HOLDER - CHOCOLATE (VERY RARE; PERFECT WITH NICE COLOR AND DETAIL)**
336. **GREENTOWN WILD ROSE AND BOWKNOT CHILD'S CREAMER - CHOCOLATE (RARE ITEM; REALLY NICE COLOR AND DETAIL)**
337. N Geneva ftd. Creamer - Chocolate (very scarce; nice color)
338. N Geneva ftd. Covered Sugar Dish - Chocolate (lid glued together but very rare)
339. (2) McKee (?) Uneeda Milk Biscuit Tankard Tumblers - Chocolate (scarce; sold choice)
340. **GREENTOWN TEARDROP AND TASSLE WATER PITCHER - CRYSTAL GREEN (VERY SCARCE; NICE COLOR)**
341. **GREENTOWN CORD DRAPERY WATER PITCHER - CRYSTAL EMERALD GREEN (RARE PATTERN; REALLY NICE COLOR)**
342. Greentown Herringbone Buttress Cracker Jar Base Only - Crystal Green (rare but no lid)
343. Greentown Dewey Water Pitcher - Amber (very scarce)
344. Greentown Dewey Tumbler - Amber (scarce)
345. Greentown Dewey Serpentine Tray - Amber (scarce)
346. Greentown Dewey Small Covered Butter Dish - Vaseline (scarce)
347. Greentown Whellbarrow (Repro!) - Crystal Green
348. Greentown Indoor Drinking Scene Mug - Nile Green
349. Greentown Shuttle Stemmed Wine Glass - Crystal (scarce)
350. **7 1/4" GREENTOWN TEARDROP AND TASSLE BERRY BOWL - CRYSTAL COBALT BLUE (SCARCE COLOR)**
351. 4 1/4" Greentown Teardrop and Tassle Individual Berry Bowl - Crystal Cobalt Blue (scarce)
352. **7 1/4" GREENTOWN (OR McKEE) FLEUR DE LEIS BERRY BOWL - CRYSTAL COBALT BLUE (VERY SCARCE COLOR FOR THIS ITEM)**
353. 4 1/4" Greentown Cord Drapery Compote Base Only - Crystal Cobalt Blue (scarce; where's the lid?)
354. 4 1/4" Greentown Cord Drapery Individual Berry Bowl - Crystal



- \_\_\_ 355. Greentown Chrysanthemum Leaf Tumbler - Crystal with Decor. (scarce)
- \_\_\_ 356. N Atlas Covered Butter Dish - Cranberry Flash
- \_\_\_ 357. N Hobnail Town Pump and Trough - Blue Opal. (very scarce)
- \_\_\_ 358. N Argonaut Shell Stemmed Jelly Compote - Clear Opal.
- \_\_\_ 359. Squirrel and Acorn Novelty Ruffled Vase - Blue Opal. (scarce novelty)
- \_\_\_ 360. **10" IMPERIAL FREEHAND ART GLASS PULLED LOOP DOUBLE HANDLED VASE - IRID. MARI. DECOR. (SUPER ITEM; GREAT COLOR AND IRID. - PERFECT!)**
- \_\_\_ 361. **6 1/2" IMPERIAL FREEHAND ART GLASS PULLED LOOP SQUATTY PEDESTAL ROSE BOWL - IRID. WHITE WITH GREEN DECOR. (VERY RARE; SUPER COLOR AND IRID.; UNUSUAL)**
- \_\_\_ 362. **6 1/2" IMPERIAL FREEHAND ART GLASS HANGING HEART BULBOUS VASE - MARI. DECOR. WITH BLUE TRIM (VERY RARE; GREAT COLOR AND IRID.)**
- \_\_\_ 363. Quezal Art Glass Pulled Feather Gas Shade with 3 1/4" Fitter - Gold / Calcite Decor. (rare item; nice decor.)
- \_\_\_ 364. Quezal Art Glass Hanging Heart / Threaded Shade on Gooseneck Lamp - Gold / Decor. (really nice item)
- \_\_\_ 365. **8" FENTON CURTAIN OPTIC STRETCH VASE WITH COBALT TRIM - VASELINE / DECORATED (SUPER DESIRABLE AND EXTREMELY RARE)**
- \_\_\_ 366. Fenton Large Size Swirl Hat Shaped Vase - Clear Opal. (scarce item)
- \_\_\_ 367. Fenton Swirl Bulbous Square Topped Vase - Cranberry Opal. (scarce; very desirable)
- \_\_\_ 368. Fenton Double Dolphin 4 Ruffled Compote - Blue Opal. (scarce color for this item)
- \_\_\_ 369. Fenton Double Dolphin 6 Ruffled Compote - Ruby (scarce color)
- \_\_\_ 370. **FENTON LIONS FLAT PLATE - MARI. (EXTREMELY RARE WITH EXCELLENT COLOR AND DETAIL)**
- \_\_\_ 371. Fenton Orange Tree Shaving Mug - Blue
- \_\_\_ 372. **FENTON ORANGE TREE STANDARD FLARED MUG - SAPPHIRE (SCARCE COLOR; NICE)**
- \_\_\_ 373. **FENTON ORANGE TREE STANDARD FLARED MUG - AQUA / MARI. (VERY SCARCE COLOR)**
- \_\_\_ 374. Fenton Orange Tree Standard Flared Mug - Mari. / Vaseline (scarce)
- \_\_\_ 375. **FENTON ORANGE TREE STANDARD MUG - PUR. (RARE COLOR IN THIS PATTERN)**
- \_\_\_ 376. Fenton Peacock and Grape Ice Cream Shaped Bowl - Blue (nice color and irid.)
- \_\_\_ 377. **FENTON PERSIAN MEDALLION ROSE BOWL - WHITE (VERY SCARCE COLOR)**
- \_\_\_ 378. Fenton Blackberry 2 Row Open Edge Ruffled Hat - Green (scarce color)
- \_\_\_ 379. Fenton Blackberry 2 Row Open Edge Ruffled Hat - Amy. (scarce color)
- \_\_\_ 380. **FENTON THISTLE FTD. BANANA BOAT - BLUE (VERY NICE COLOR AND IRID.; VERY SCARCE)**
- \_\_\_ 381. **FENTON CHERRIES FTD. OVAL BANANA BOAT - BLUE (EXTREMELY RARE PATTERN - ONLY A FEW KNOWN; CRACKED)**
- \_\_\_ 382. **FENTON FUSHA 2 HANDLED STEMMED BON BON - MARI. (EXTREMELY RARE PATTERN; ONE OTHER BLUE ONE KNOWN; HAIRLINE BY HANDLE)**
- \_\_\_ 383. Fenton Wreath of Roses Punch Top with Persian Medallion Interior - Blue (nice color needs base)
- \_\_\_ 384. Fenton Wreath of Roses Punch Top with Persian Medallion Interior and 6 Cups - Mari. (nice set; needs base)
- \_\_\_ 385. **FENTON LOTUS AND POINSETTIA FTD. RUFFLED SAUCE - GREEN (RARE COLOR; NICE)**
- \_\_\_ 386. Fenton Lotus and Poinsettia ftd. Ruffled Sauce - Aqua / Mari. (scarce color; nice)
- \_\_\_ 387. Fenton Lotus and Poinsettia ftd. Ruffled Sauce - Mari. / Vaseline (scarce color)
- \_\_\_ 388. Fenton Lotus and Poinsettia ftd. Ruffled Sauce - Blue
- \_\_\_ 389. Fenton Starflower Water Pitcher - Blue (as is but really rare)
- \_\_\_ 390. **FENTON BUTTERFLY AND BERRY TUMBLER - GREEN (RARE COLOR; NICE DETAIL)**
- \_\_\_ 391. **FENTON BLACKBERRY BLOCK TUMBLER - AMY. (VERY SCARCE COLOR)**
- \_\_\_ 392. Fenton Blackberry Block Tumbler - Dk. Mari. (really nice color)
- \_\_\_ 393. (2) Fenton Milady Tumblers - Amy. (scarce; selling 150 choice) ✓
- \_\_\_ 394. Fenton Milady Tumbler - Blue (scarce) <sup>65</sup>
- \_\_\_ 395. Fenton Orange Tree Tumbler - Blue (scarce; nice irid.)
- \_\_\_ 396. Fenton Orange Tree Scroll Tumbler - Dk. Mari. (super color and irid.)
- \_\_\_ 397. Fenton Butterfly and Fern Tumbler - Green (scarce)
- \_\_\_ 398. Fenton Panelled Dandelion Tumbler - Amy. ✓
- \_\_\_ 399. Fenton Orange Tree Punch Base Only - Blue (very scarce part)



- \_\_\_ 400. **1903 NATIONAL GLASS MELON BOYS GONE WITH THE WIND LAMP PURCHASED FROM WM. HEACOCK - A SUPER RARITY)**
- \_\_\_ 401. 6" Fenton Persian Medallion Plate - Mari.
- \_\_\_ 402. Fenton Orange Tree Stemmed Flared Compote - Mari. / Pink (scarce tint)
- \_\_\_ 403. Depression Era Stippled Strawberry Tumbler - Mari. (faded pattern but scarce)
- \_\_\_ 404. European Enamelled Decorated Mary Gregory Tankard Tumbler - Cranberry Flash (unusual item; nice decor.)
- \_\_\_ 405. **M'BURG PERFECTION TUMBLER - GREEN (VERY RARE COLOR FOR THIS RARE PATTERN; NICE)**
- \_\_\_ 406. **9 1/2" M'BURG 6 POINTED MANY STARS CRIMPED EDGE RUFFLED BOWL - MARI. (RADIUM FINISH AND SUPER DESIRABLE - SUPER!)**
- \_\_\_ 407. M'burg Marilyn Tumbler - Amy. (very scarce; nice)
- \_\_\_ 408. M'burg Marilyn Tumbler - Mari. (smoothed top but scarce)
- \_\_\_ 409. M'burg Multi-Fruits and Flowers Punch Top - Amy. (chipped on top edge and base)



410. M'BURG HOBSTAR AND FEATHER GIANT PUNCH TOP WITH FLEUR DE LEIS INTERIOR - PUR. (U SHAPED CRACK BUT ABSOLUTELY SUPER)
411. M'BURG OHIO STAR STEMMED JELLY COMPOTE - CRYSTAL (VERY SCARCE SHAPE AND NICE)
412. M'burg Ohio Star Covered Sugar Bowl - Crystal
413. M'burg Ohio Star Spooner - Crystal
414. Cambridge Double Star Tumbler - Green (scarce)
415. CAMBRIDGE INVERTED FEATHER PUNCH CUP - GREEN (PINHEAD ON EDGE BUT VERY, VERY RARE)
416. CAMBRIDGE NEAR CUT TUMBLER - DK. MARI. (VERY RARE; NICE DARK COLOR) ✓ 275
417. U.S. GLASS WHITE OAK TUMBLER - MARI. (VERY RARE PATTERN, NICE COLOR)
418. Fenton Freesia Enamelled Tumbler - Ice Green (scarce; nice)
419. Dugan Intaglio Flower Miniature Flower Basket with Wire Handle - Goofus Decor.
420. U.S. GLASS COSMOS AND CANE / HEADRESS INTERIOR ROSE BOWL - MARI. (VERY RARE SHAPE FOR THIS PATTERN; NICE COLOR AND IRID.)
421. U.S. Glass Palm Beach Rose Bowl from Berry Bowl with Gooseberry Interior - White with Silver Decor. (very scarce item; nice color and decor.)
422. Westmoreland Carolina Dogwood Ruffled Bowl - P. Opal. (really nice color)
423. N Pretty Panels Stretch Tumbler - Celeste Blue (scarce)
424. A BEAUTIFUL 4" SEVRES FIGURAL ART NOUVEAU FLORAL VASE WITH WOMAN (REALLY NICE ITEM - A REAL SWEETHEART!)
425. 6 1/2" CONSOLIDATED RUBA ROMBIC VASE - GREEN CASED (VERY RARE AND VERY DESIRABLE)
426. CONSOLIDATED RUBA ROMBIC 6 OZ. TUMBLER - GREEN CASED (RARE)
427. CONSOLIDATED RUBA ROMBIC 6 OZ. TUMBLER - PUR. CASED (RARE)
428. CONSOLIDATED RUBA ROMBIC SHOT GLASS - JUNGLE GREEN (VERY SCARCE)
429. Pair Consolidated Ruba Rombic 805 Candlesticks - Green Cased (chipped but very desirable)
430. CONSOLIDATED 700 LINE (#700) 8" VASE - RED FROSTED WITH CRYSTAL HIGHLIGHTS (SUPER RARE COLOR)
431. Consolidated 700 Line (#700) 8" Vase - Ruby Red (very scarce color)
432. Consolidated 700 Line (#700) 8" Vase - Custard (worn gold but very scarce)
433. Consolidated Large Cockatoo Bulbous Vase (x-2754) - Tri-colored Satin Finish (very scarce item; nice finish)
434. Pair Consolidated Floral Martele Vase (Figure 142) - Milk Glass / Gold (scarce; so much each for pair)
435. CONSOLIDATED SANTA MARIA 2 PC. NIGHT LIGHT - FROSTED / DECORATED WITH STAND (VERY RARE ITEM; SUPER DESIRABLE)
436. Consolidated Pine Cone Bulbous Vase - Tri-colored Satin Finish
437. Phoenix Lacy Dewdrop Water Pitcher - Milk Glass / Enamelled Decor.
438. Phoenix Cosmos Vase - Green Irid.
439. Phoenix Aster Vase - Glossy Red / Milk Glass
440. PHOENIX BACHELOR BUTTONS VASE WITH LABEL - PINK / MILK GLASS (ONE OF THE RARER PHOENIX PATTERNS)
441. CONSOLIDATED LARGE SEAGULLS CASE - MILK GLASS / GOLD DECOR. (RARE PATTERN; NICE COLORS)
442. CONSOLIDATED LARGE SEAGULLS VASE - CUSTARD / GOLD (VERY RARE ITEM; NICE DECOR.)
443. Consolidated Cardinal Window Box - Tri-colored Satin Finish (rare item; nice colors)
444. PHOENIX MADONNA VASE - MARI. FLASH / MILK GLASS (VERY RARE TEXTURE AND FINISH; NICE)
445. U.S. or Czech Floral Pillow Vase - Frosted Cobalt Blue (unusual pattern; ? maker)
446. Imperial Flute Toothpick Holder - Green
447. Imperial Flute Toothpick Holder - Mari.
448. Imperial Ripple Small Swung Vase - Non-Irid. Amber (unusual item)
449. Imperial Grape Handled Cookie Tray - Smoke
450. IMPERIAL CHATELINE TUMBLER - PUR. (SUPER COLOR AND IRID.; VERY SCARCE)
451. Imperial Grape Tumbler - Pur. (scarce)
452. IMPERIAL OCTAGON LARGE TUMBLER - PUR. (VERY RARE COLOR FOR THIS ITEM)
453. IMPERIAL FIELDFLOWER TUMBLER - PUR. (SUPER COLOR AND IRID.; SCARCE)
454. Imperial Lustre Rose Water Pitcher - Pur. (chip on base but super scarce)
455. Imperial Grape Wine Decanter and Stopper - Pur. (great color and irid.; scarce)
456. Imperial Scroll and Flower Large Vase - Pur. (cracked but very rare)
457. Imperial Diamond Lace Water Pitcher - Pur. (rough base; great color)
458. Imperial Diamond Lace Tumbler - Pur.
459. Imperial Windmill Tumbler - Dk. Mari.
460. Imperial Soda Gold Tumbler - Smoke (very scarce color)
461. Imperial Soda Gold Tumbler - Mari.
462. Dugan Peacock at the Fountain Tumbler - Mari.
463. Fenton Pearly Dot Rose Bowl - Green
464. N Poppy Relish Tray - Custard / Nutmeg (scarce)
465. 7 - 8" N Pillar Ribbed Vase - Custard / Nutmeg
466. 11 3/4" N Stretch Thin Rib Chop Plate - Blue Opaque
467. N Stretch Panelled Rose Bowl from Candy Jar Base - Blue Opaque
468. Late Fenton Burmese 2 pc. Fairy Lamp with Decor. (newer but very desirable)
469. N Inverted Fan and Feather Novelty ftd. Rose Bowl - Blue Opal.
470. Beaded Drapes Novelty ftd. Rose Bowl - Blue Opal.
471. Many Loops Novelty Rose Bowl - Blue Opal.
472. Many Loops Novelty Rose Bowl - Green Opal.
473. Ribbed Spiral Oval 2 Sided Banana Dish - Blue Opal.
474. 6 1/2 - 7" Coudersport Trailing Vine Ruffled Bowl - Vaseline Opal.
475. Imperial Long Hobstar Ruffled Bowl with Twins Base - Mari.



