

AUCTION



CARNIVAL GLASS



Saturday, July 3, 1993 – 6 p.m.

HARLEY HOTEL
I-70 at Earth City Exit #231-B
ST. LOUIS, MISSOURI

CARNIVAL GLASS AUCTION



Saturday, July 3, 1993
6 P. M.

HARLEY HOTEL
I-70 at Earth City Exit #231-B
ST. LOUIS MISSOURI

Selling a small but mighty collection of extremely choice Carnival Glass. Among the slightly over 200 pieces are many rarities and beautifully iridized pieces. You would have to travel many miles in order to find anything to equal this quality and, even then, it probably wouldn't be for sale. Plan to join us on this holiday weekend and add some real "sparklers" to your collection.

Note the evening starting time. Preceding this auction will be an auction of American Brilliant Period Cut Glass. Call or write for a catalog if interested.

PREVIEW: Friday, 6 p.m.

TERMS: Cash. Checks accepted if previously approved.

MOTEL RESERVATIONS: May be made by calling the Harley directly at 314-291-6800, or call toll-free: 1-800-321-2323.

WRITE-IN BIDS: Accepted with a written statement of the amount of your bid. PLEASE NOTE — there is a 5% handling charge which will be added to the selling price of all write-in bids. This is in addition to the cost of postage and insurance. Your write-in bid will be entered just as if you are present and bidding. For your convenience, FAX #316-746-2145.



1. Blue Footed Bowl
2. Cherry Circles Handled Nappy – blue
3. Vintage Footed Nut Bowl – blue
4. Fenton Acorns 6" Bowl with Ruffled Edge - Sapphire Blue, rare color
5. Fisherman Mug – purple
6. Blue Thistle small Compote
7. N Three Fruits Ribbed Plate – **electric blue**
8. **B.P.O.E. Detroit Elk Bowl – purple**
9. Near Cut **INVERTED STRAWBERRY WHIMSEY NAPPY**, two handles – green
10. **N Embroidered Mums Ruffled Bowl – ICE BLUE**
11. Grape Delight Nut Bowl – amethyst
12. Garland Rose Bowl (Unusual Color) – blue
13. **N Bushel Basket – AQUA OPALESCENT**
14. **N Peacock at Urn Large Ice Cream Shape Bowl - purple, Electric**
15. Large footed **N Grape & Cable Fruit Bowl – ICE GREEN**
16. **Apple Blossom Kerosene Lamp**, small – green
17. **N Three Fruits Ruffled Footed Bowl with meander back - ICE BLUE, Best Example**
18. **Apple Blossom Kerosene Lamp**, large, also with pattern on interior of lamp base – green
19. Paneled Dandelion Water Set, seven piece – green
20. **N Embroidered Mums Plate – light green**
21. **Seacoast Pin Tray – purple**
22. **N Peacock at Fountain Water Pitcher – frosty white**
23. **N Peacock at Urn Large Ice Cream Shape Bowl – white**
24. **N Peacock at Urn Ice Cream Bowl – Periwinkle Blue**, very unusual color
25. Many Stars 10" Bowl, rare ice cream shape – green
26. **EXTREMELY RARE & UNUSUAL N Peacock at Fountain Large Rose Bowl**, footed (started life as fruit bowl, but shaped like rosebowl) – purple
27. **Rose Show Plate - blue, Electric**
28. **N Grape & Cable Centerpiece Bowl – ICE GREEN**
29. Fenton's Peacock at Urn Bowl – white
30. **N Hearts & Flowers Ruffled Bowl – blue, Electric**
31. **N Grape & Cable Dresser Tray – purple**
32. **HOBNAIL Rose Bowl – amethyst**
33. **N Grape & Cable Bowl**, with basket-weave back – teal
34. Wreathed Cherry Water Set, seven piece – **Excellent FROSTY WHITE**
35. Orange Tree Loving Cup – blue
36. **N Grape & Cable Stippled Plate – purple**
37. **PONY BOWL – ICE GREEN**
38. **N Grape & Cable Hatpin Holder – green**
39. **N Hearts & Flowers Ruffled Bowl – ice blue**
40. **N Grape & Cable Punch Bowl & 6 cups – purple**
41. Orange Tree Hatpin Holder – blue
42. **N Grape & Cable Stippled Bowl, PCE – Ice Blue**
43. **Northwood Peacocks on Fence Bowl – AQUA OPALESCENT**
44. **N Peacock at Urn Sauce Bowl – ice blue**
45. Dugan Octagon Decanter – marigold, good stopper
46. Dugan Octagon Wine – marigold
47. **N Grape & Cable Hat Pin Holder – RARE PASTEL BLUE**, could be called Celeste Blue
48. **N Strawberry Plate – purple**
49. **N Peacock at Urn Large Ice Cream Shape Bowl – marigold**
50. **N Acorn & Burr Water Set, seven piece – purple**
51. **N Three Fruits Plate – purple**
52. **N Hearts & Flowers Compote – Aqua Opalescent with deep opal**

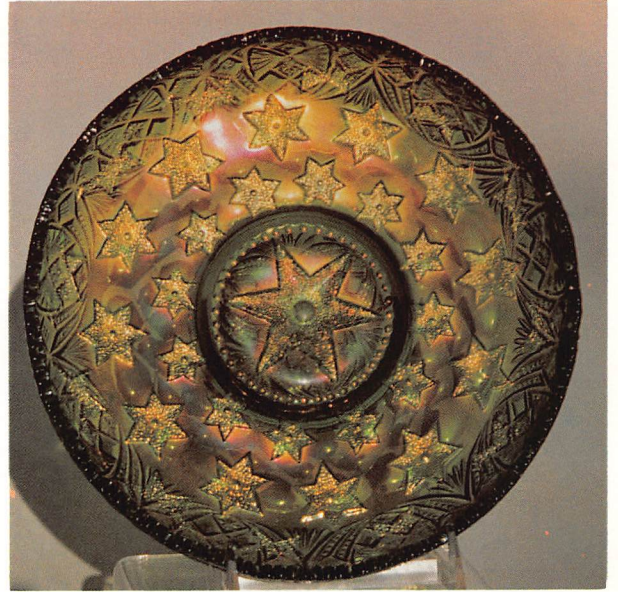


Douglass, Ks. 67039 (316) 746-2694



- _____ 53. Large Peacock at Urn Compote
— amethyst
- _____ 54. Northwood Peach Table Set,
four piece — **WHITE**
- _____ 55. N Grape & Cable Ruffled Bowl —
emerald green, a perfect example
- _____ 56. Cherry Compote — amethyst
- _____ 57. Vintage Bowl — blue
- _____ 58. N Fruits & Flowers Ruffled 7"
Bowl with basketweave back —
ice green
- _____ 59. N Grape & Cable Thumbprint
Bowl — purple
- _____ 60. **MILLERSBURG COURT-
HOUSE BOWL — AMETHYST**
- _____ 61. Large N Peacock at Urn Footed
Bowl — purple
- _____ 62. N Hearts & Flowers Compote —
purple
- _____ 63. N Grape & Cable Punch Bowl
& 6 cups — purple
- _____ 64. Large Persian Medallion/Grape
& Cable Bowl — blue
- _____ 65. N Peacocks Bowl, PCE with
basketweave back — **green**
- _____ 66. N Good Luck Bowl — purple
- _____ 67. N Oriental Poppy Water Set,
seven piece — purple
- _____ 68. N Hearts & Flowers Bowl, PCE
— light green
- _____ 69. Poppy Show Vase — smoky, hole
in bottom
- _____ 70. Three Fruits Plate — purple
- _____ 71. N Good Luck Ruffled Bowl —
Ice Blue, Moore's bowl, chip on
valley & manufacturer's flaw
- _____ 72. Near Cut Pitcher & 3 Tumblers
— green
- _____ 73. N Wishbone Flat Bowl, footed —
amethyst
- _____ 74. Fenton Stag & Holly Large Ice
Cream Shape Bowl — smoke,
Unusual Electric
- _____ 75. N Grape & Cable Large Footed
Bowl — purple
- _____ 76. Tree of Life Bowl — smoke
- _____ 77. N Grape & Cable Stippled Bowl
— green
- _____ 78. Stork and Rushes Water Set,
seven piece — blue





WOODY
AUCTION
Douglass, Ks. 67039 (316) 746-2694



- _____ 79. Peacock at Urn Bowl, no beads – purple
- _____ 80. N Peacock at Urn Large Ice Cream Shape Bowl – pale marigold
- _____ 81. N Grape & Cable Punch Bowl & Base – marigold
- _____ 82. Rose Show Bowl – **ICE GREEN**
- _____ 83. N Hearts & Flowers Compote – dark marigold
- _____ 84. N Grape & Cable Humidor – purple
- _____ 85. Blue Grape & Maple Leaf Bowl
- _____ 86. N Grape & Cable Stippled Plate – **emerald green**, choice!
- _____ 87. N Peacock at Fountain Water Set, seven piece – purple
- _____ 88. Millersburg Fleur-de-Lis Pedestal Bowl – amethyst
- _____ 89. Millersburg Peacock at Urn Bowl – green
- _____ 90. N Grape & Cable Plate – marigold, perfect
- _____ 91. Poinsettia Footed Bowl – purple
- _____ 92. N Peacock at Fountain Table Set, four piece – **ICE BLUE**
- _____ 93. N Grape & Cable Ruffled 7" Bowl, with basketweave back – **ICE BLUE**, **One of Three Known**
- _____ 94. Holly Bowl – blue
- _____ 95. Dragon & Lotus Bowl – blue
- _____ 96. N Hearts & Flowers Bowl, PCE – blue, Electric
- _____ 97. N Grape & Cable Breakfast Creamer & Sugar – purple
- _____ 98. N Grape & Cable Table Set – purple
- _____ 99. N Grape & Cable Ruffled Bowl (crimped plate) – marigold, Electric
- _____ 100. Purple/Amber Berry & Leaf Bowl
- _____ 101. Broken Arches Punch Bowl and 12 cups – purple
- _____ 102. N Grape & Cable Stippled Bowl, PCE – **AQUA OPALESCENT**
- _____ 103. Persian Medallion/Grape & Cable footed bowl – purple
- _____ 104. Peacock at Urn Mystery Bowl – purple
- _____ 105. N Hearts & Flowers Compote – blue
- _____ 106. **Northwood Peacocks on Fence Bowl – AQUA OPALESCENT**
- _____ 107. Peacock at Urn Mystery Bowl, Ice Cream Shape – purple
- _____ 108. N Peacock at Urn Large Ice Cream Shape Stippled Bowl – blue
- _____ 109. Poppy Show Bowl – marigold
- _____ 110. N Peacock at Fountain Water Set, seven piece – blue
- _____ 111. N Hearts & Flowers Compote – **ICE GREEN**
- _____ 112. Peacock at Urn Mystery Bowl, Ice Cream Shape – green
- _____ 113. N Peacocks on Fence Plate – blue
- _____ 114. Rose Show Ruffled Bowl – **Emerald Green**, some electric
- _____ 115. N Grape & Cable Bowl – purple
- _____ 116. Orange Tree Bowl – white
- _____ 117. N Grape & Cable Stippled Plate – **Teal, Very Rare**
- _____ 118. N Grape & Cable Bowl – purple
- _____ 119. Vintage Footed Nut Bowl – purple
- _____ 120. N Peacock at Urn Large Ice Cream Shape Bowl – **ICE BLUE**
- _____ 121. N Grape & Cable Water Set, seven piece (one tumbler damaged) – green
- _____ 122. Orange Tree Bowl – blue
- _____ 123. N Grape & Cable Stippled Bowl, PCE – light green
- _____ 124. Millersburg Nesting Swan Bowl – **green**
- _____ 125. Diamond Lace Water Set – purple
- _____ 126. N Hearts & Flowers Compote – **Frosty White** with Good Color
- _____ 127. Cherry Bowl, ice cream shape – amethyst
- _____ 128. N Grape & Cable Berry Set, seven piece
- _____ 129. Dugan Lustre Rose Orange Bowl – green
- _____ 130. Poppy Show Bowl – periwinkle blue
- _____ 131. Pointed Star & Flower Water Set, seven piece – blue
- _____ 132. N Peacock at Urn Plate - **blue, Electric**
- _____ 133. N Grape & Cable Cracker Jar – purple
- _____ 134. Purple "Smith" Banana Bowl Compote
- _____ 135. Pair N Grape & Cable Candlestick holders (1 rough) – green
- _____ 136. N Hearts & Flowers Compote – blue, some Electric
- _____ 137. N Acorn & Burr N Table Set, four piece – purple
- _____ 138. N Grape & Cable Banana Bowl – purple
- _____ 139. N Hearts & Flowers Compote – **GREEN**
- _____ 140. Poppy Show Bowl – **ICE BLUE**
- _____ 141. Grape Delight Nut Bowl – white
- _____ 142. Poppy Show Bowl – **ICE GREEN**

- _____ 143. Butterfly & Berry Water Set, seven piece – purple
- _____ 144. Grape Delight Rose Bowl – white
- _____ 145. Broken Arches Punch Set, seven piece – purple
- _____ 146. N Peacock at Urn Large Ice Cream Shape Bowl – **ICE GREEN**
- _____ 147. N Drapery Rose Bowl – white
- _____ 148. Small Footed Compote – peach opalescent
- _____ 149. **Rose Show Plate – Marigold**, Perfect Deep Color
- _____ 150. Orange Tree Mug – blue
- _____ 151. Small Berry Bowl – purple
- _____ 152. N Grape & Cable Stippled Bowl - b
- _____ 153. Fine Cut & Roses Rose Bowl – purple
- _____ 154. Grape Delight Rose Bowl – blue
- _____ 155. Fenton Orange Tree Mug, small – smoke blue, base crack
- _____ 156. N Singing Birds Water Set, seven piece – green
- _____ 157. Thistle Banana Bowl – blue
- _____ 158. N Grape & Cable Stippled Plate – Electric BLUE
- _____ 159. Stag & Holly Footed Bowl – blue
- _____ 160. Orange Tree Water Set, seven piece – blue
- _____ 161. Imperial Grape Decanter – purple, electric & perfect stopper
- _____ 162. Butterfly & Berry Bowl – blue
- _____ 163. Panther Bowl – blue
- _____ 164. Grape Arbor Water Set, seven piece – purple
- _____ 165. N Poinsettia & Lattice Ruffled Footed Bowl – marigold, deep color
- _____ 166. **Millersburg BIG FISH Bowl – green**
- _____ 167. Holly Plate – blue
- _____ 168. N Dandelion Mug – purple
- _____ 169. **Fenton Plaid Ice Cream Shape Bowl – purple, RARE**
- _____ 170. Orange Tree Covered Powder Jar – blue
- _____ 171. Butterfly Water Set, seven piece – blue
- _____ 172. Pedestal Rose Bowl – marigold
- _____ 173. N Peacocks on Fence Ribbed Plate – **ICE GREEN**
- _____ 174. Wreathed Cherry Sauce Dish – white
- _____ 175. Strutting Peacock Sugar with lid – amethyst
- _____ 176. Two Fruits Punch Bowl & Base – purple
- _____ 177. Fenton Orange Tree Mug, small –Fieri Amethyst
- _____ 178. Good Luck Bowl (damaged point) – **AQUA OPALESCENT**
- _____ 179. Bird & Strawberry Two Handled Nappy – blue
- _____ 180. Cut Arches Water Set, seven piece – purple
- _____ 181. N Peacocks on Fence Bowl, PCE with ribbed back – **Electric Blue**
- _____ 182. Millersburg **BIG FISH** Bowl – marigold
- _____ 183. Imperial Grape Pitcher
- _____ 184. Fenton Peacock Vase
- _____ 185. Blue Stag & Holly footed Vase
- _____ 186. Cherry 2 handled Nappy – blue
- _____ 187. Cherry 2 handled Nappy (Unusual Color), flat shape – blue
- _____ 188. Persian Medallion Bowl
- _____ 189. 6 Grape Wines – blue
- _____ 190. N Grape & Cable Sweetmeat – purple
- _____ 191. Garland Rose Bowl – marigold
- _____ 192. Amethyst Maple Leaf Rose Bowl
- _____ 193. 2 piece large Cut pattern Punch Bowl
- _____ 194. Dahlia Table Set, three pieces (no lid) – purple
- _____ 195. 4 Peacock at Urn Sauce Dishes – blue
- _____ 196. 6 Grape & Cable Berry Thumbprint Dishes – purple
- _____ 197. 8 Grape & Cable Ruffled Sauce Dishes – purple
- _____ 198. Imperial 1964-1969 Purple Carnival Glass Club Plate
- _____ 199. Fenton 1970 Christmas Plate
- _____ 200. Fenton 1970 Collectors Plate
- _____ 201. 3 N Peacock at Fountain – white
- _____ 202. 3 Deganhart Owls
- _____ 203. 3 St. Clair Toothpicks, Indian
- _____ 204. 2 St. Clair Double S Toothpick
- _____ 205. Smith Purple Cut design Creamer & Sugar
- _____ 206. Purple Smith Grape Punch Bowl
- _____ 207. Smith Cut Vase
- _____ 208. Fenton Compote – Rose
- _____ 209. Smith Turkey

You might run across some unusual and creative pattern names or incomplete descriptions. We apologize for any difficulties this might cause. The items are packed and we were unable to go through the collection and make corrections on the list.



FIRST CLASS



Address Correction Requested
PLEASE FORWARD

