



**AUCTION SERVICE**

## **The Bacon Collection**

**Friday & Saturday, June 11 & 12, 1993**

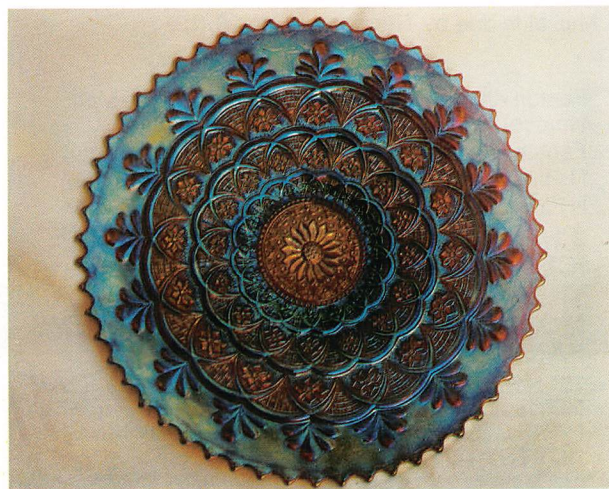
6:30 pm, Friday, Lots 1 - 225, 3:00 pm preview

9:00 am, Saturday, Lots 226 - end, 8:00 am preview

at the **Holiday Inn Richfield**

4742 Brecksville Road, Richfield, OH 44286

**(216) 659-6151**



### **Burns Auction Service**

Tom Burns  
109 E. Steuben St.  
Bath, New York 14810  
(607) 776-7942

Bill Richards  
44 Water St.  
Poland, Ohio 44514  
(216) 757-2001

Bill Richards III  
524 Poland Ave.  
Struthers, Ohio 44471  
(216) 755-2620

Licensed and Bonded by the Department of Commerce in favor of the State of Ohio



Where do you start? Every once in a while an event happens that sorta makes a statement. Well, guess what? How about the sale, at auction, of the collection of Earl & Gladys Bacon of Pennsylvania. This auction will definitely have a lot to say. This collection has got to rate up there with the finest of all time. Its beauty and quality speaks for itself.

I can't say enough about this two day affair. Do yourself a favor, make plans to attend the auction of the year, and I mean this - you won't be sorry!

The Holiday Inn - Richfield will host the event. It's located 1/2 mile from Exit 11 of the Ohio Turnpike. We have a total of 100 rooms reserved and they are going fast - so don't hesitate. Make your reservations by calling the motel direct at (216) 659-6151 between 9:00 am and 5:00 pm. Be sure to mention Burns Auction Service to get your room - don't wait! In case the rooms fill up, there are several other area motels: The Days Inn about 5 minutes down the road in Brecksville. About 10 - 15 minutes south are the motels of Akron - Fairborn: a Holiday Inn, a Super 8, a Fairfield Inn, a large Comfort Inn, a Raddisson, plus others. Ask the Holiday Inn for further information. Hope to see you there.

Mail Bids due by Thursday, June 10, 1993.

Mail Bids honored under the following conditions:

1. No deposit required. Bidders will take full responsibility to honor any and all bids we execute for them. Payment in full plus postage and handling required after notification and before we ship any item to them.
2. Items are bid on in perfect condition with average or above average iridescence OR as listed in the brochures. Bids will not be carried out when damage on an item has been found during the auction.
3. Successful bidders will be notified by collect call from the auctioneer (so be sure to include phone number).
4. Phone inquiries about the glass or any other questions are welcome.
5. All non-successful will receive a result summary in the mail. Results of all bids will be provided.
6. If you have some other person at the auction bidding for you, they must pay for the item before taking it.
7. Mail bids due by Thursday, June 10, 1993

- |   |   |
|---|---|
| <p><u>165</u> 1. Fenton Kittens Ruffled Toothpick Holder - Dk. Mari. (scarce)</p> <p><u>110</u> 2. Fenton Kittens 4 sided Ruffled Bowl - Mari. (scarce)</p> <p><u>60</u> 3. N Fine Cut &amp; Roses ftd. Ruffled Candy Dish - Green</p> <p><u>75</u> 4. N Fine Cut &amp; Roses ftd. Ruffled Candy Dish - Green</p> <p><u>31 000</u> 5. <b>9 1/4" N PEACOCK AT THE URN LARGE ICE CREAM BOWL - AQUA OPAL. (EXTREMELY RARE AND SUPER! ONE OF THE MOST DESIRABLE NORTHWOOD ITEMS - FANTASTIC!)</b></p> <p><u>5250</u> 6. <b>10" N PEACOCK AT THE URN LARGE ICE CREAM BOWL - SAPPHIRE BLUE (ANOTHER EXTREMELY RARE COLOR; HAS A BIT OF A SILVERY FINISH - BUT TRY TO FIND ANOTHER ONE)</b></p> <p><u>5000</u> 7. <b>10" N PEACOCK AT THE URN LARGE ICE CREAM BOWL - GREEN (EXTREMELY RARE COLOR; ONE MORE OF THE TOUGH KEY ITEMS - VERY NICE COLOR AND IRID.)</b></p> <p><u>700 x4</u> 8. <b>(4) N PEACOCK AT THE URN INDIVIDUAL ICE CREAM BOWLS - GREEN (SELLING CHOICE; GREAT COLOR AND VERY NICE - SUPER IRID. ON ALL THEM)</b></p> <p><u>1600</u> 9. <b>N PEACOCK AT THE URN 7 PC. ICE CREAM SET - ELEC. BLUE (NICE ITEM; VERY SCARCE AND DESIRABLE)</b></p> <p><u>1200</u> 10. <b>9 1/2" N PEACOCK AT THE URN LARGE ICE CREAM BOWL - ELEC. BLUE (NICE ITEM; VERY SCARCE AND DESIRABLE)</b></p> <p><u>800</u> 11. <b>10" N PEACOCK AT THE URN LARGE ICE CREAM BOWL - ICE GREEN (RARE WITH SUPER IRID. - THEY'RE GETTING TOUGHER)</b></p> <p><u>800</u> 12. <b>9 3/4" N PEACOCK AT THE URN LARGE ICE CREAM BOWL - ICE BLUE (RARE WITH SUPER IRID.)</b></p> <p><u>475</u> 13. <b>9 1/2" N PEACOCK AT THE URN LARGE ICE CREAM BOWL - WHITE (VERY SCARCE; NICE AND FROSTY COLOR AND IRID.)</b></p> <p><u>800</u> 14. <b>N PEACOCK AT THE URN 7 PC. ICE CREAM SET - PUR. (SCARCE SET AND WELL MATCHED; NICE!)</b></p> <p><u>550</u> 15. <b>9 1/2" N N PEACOCK AT THE URN LARGE ICE CREAM BOWL - DK. MARI. (SCARCE; NICE DARK COLOR AND PINK HIGHLIGHTS)</b></p> <p><u>250</u> 16. <b>9 1/2" N Peacock at the Urn Large Ice Cream Bowl - Custard / Nutmeg (a scarce item with nice Nutmeg finish)</b></p> <p><u>700</u> 17. <b>10 3/4" N PEACOCK AT THE URN CHOP PLATE - PUR. (VERY RARE AND DESIRABLE; GETTING BETTER; NICE)</b></p> | <p><u>5100</u> 18. <b>N PEACOCK AT THE FOUNTAIN 8 PC. PUNCH SET - WHITE (EXTREMELY RARE SET; NICE AND FROSTY; GREAT IRID.)</b></p> <p><u>2700</u> 19. <b>N PEACOCK AT THE FOUNTAIN LG. FTD. RUFFLED FRUIT BOWL - GREEN (SUPER RARE ITEM WITH GREAT COLOR AND BEAUTIFUL IRID.; REALLY NICE!)</b></p> <p><u>500</u> 20. <b>N PEACOCK AT THE FOUNTAIN LARGE FTD. RUFFLED FRUIT BOWL - PUR. (A RARE ITEM WITH SUPER COLOR AND IRID.)</b></p> <p><u>180</u> 21. <b>N Peacock at the Fountain Large ftd. Ruffled Fruit Bowl - Dk. Mari. (super color; nice pink highlights)</b></p> <p><u>1900</u> 22. <b>N PEACOCK AT THE FOUNTAIN STEMMED RUFFLED COMPOTE - ICE GREEN (VERY RARE; SUPER COLOR ON THIS VERY DESIRABLE ITEM)</b></p> <p><u>1350</u> 23. <b>N PEACOCK AT THE FOUNTAIN STEMMED RUFFLED COMPOTE - ICE BLUE (ANOTHER RARE ITEM; VERY NICE COLOR AND IRID.)</b></p> <p><u>1100</u> 24. <b>N PEACOCK AT THE FOUNTAIN STEMMED RUFFLED COMPOTE - BLUE (VERY RARE ITEM IN THIS COLOR; NICE HIGHLIGHTS)</b></p> <p><u>700</u> 25. <b>N HEART AND FLOWERS STEMMED RUFFLED COMPOTE - ICE BLUE (RARE AND VERY DESIRABLE; NICE IRID.)</b></p> <p><u>500</u> 26. <b>N HEART AND FLOWERS STEMMED RUFFLED COMPOTE - AQUA OPAL. (SCARCE; PASTEL IRID.; HAS BEEN SLIGHTLY SMOOTHED ON BASE)</b></p> <p><u>210</u> 27. <b>N HEART AND FLOWERS STEMMED RUFFLED COMPOTE - WHITE (VERY SCARCE; NICE IRID.)</b></p> <p><u>825</u> 28. <b>N HEART AND FLOWERS STEMMED RUFFLED COMPOTE - PUR. (A REALLY TOUGH COLOR TO FIND; NICE IRID.)</b></p> <p><u>275</u> 29. <b>N HEART AND FLOWERS STEMMED RUFFLED COMPOTE - ELEC. BLUE (SCARCE; SUPER IRID.; 2 TINY NICKS ON BASE)</b></p> <p><u>325</u> 30. <b>N Heart &amp; Flowers Stemmed Ruffled Compote - Dk. Mari. (very nice color &amp; irid.; scarce)</b></p> <p><u>5500</u> 31. <b>N HEART AND FLOWERS PLATE WITH PLAIN EXTERIOR - LIME ICE GREEN (ABSOLUTELY SUPER PIECE OF GLASS WITH FANTASTIC IRID.; A GREAT ITEM!)</b></p> <p><u>1700</u> 32. <b>N HEART AND FLOWERS PLATE WITH RIBBED EXTERIOR - GREEN (SUPER RARE WITH VERY NICE COLOR AND MULTI-COLORED IRID.)</b></p> <p><u>1100</u> 33. <b>N HEART AND FLOWERS PLATE WITH RIBBED EXTERIOR - PUR. (VERY RARE PLATE; A NICE ITEM - GETTING TOUGH!)</b></p> |
|---|---|



- 800 34. N HEART AND FLOWERS PLATE WITH RIBBED EXTERIOR - MARI. (A RARE ITEM; NICE COLOR WITH UNUSUAL NARROW BASE)
- 650 35. N HEART AND FLOWERS RUFFLED BOWL WITH RIBBED EXTERIOR - ICE GREEN (RARE WITH VERY NICE IRID.)
- 305 36. N HEART AND FLOWERS RUFFLED BOWL WITH RIBBED EXTERIOR - ICE BLUE (RARE WITH VERY NICE COLOR AND IRID.)
- 125 37. N Heart & Flowers Ruffled Bowl with Ribbed Exterior - White (scarce with excellent irid.; small flake on edge)
- 2000 38. N EMBROIDERED MUMS RUFFLED BOWL WITH RIBBED EXTERIOR - AQUA OPAL. (VERY RARE ITEM; HAS GREAT OPAL. AND AVERAGE IRID.)
- 1850 39. N EMBROIDERED MUMS RUFFLED BOWL WITH RIBBED EXTERIOR - AQUA / MARI. (EXTREMELY RARE COLOR WITH GREAT MARI. OVERLAY)
- 800 40. N EMBROIDERED MUMS RUFFLED BOWL WITH RIBBED EXTERIOR - ICE GREEN (MUCH TOUGHER THAN THE PLATES - VERY RARE!)
- 800 41. N EMBROIDERED MUMS BOWL WITH RIBBED EXTERIOR AND PIE CRUST EDGE - BLUE (SUPER SCARCE COLOR IN A SUPER SCARCE SHAPE; HAS 2 GOLD. IRID. RUFFLES)
- 2100 42. N EMBROIDERED MUMS PLATE WITH RIBBED EXTERIOR - ICE GREEN (EXTREMELY DESIRABLE WITH SUPER COLOR AND IRID.)
- 1000 43. N EMBROIDERED MUMS PLATE WITH PLAIN EXTERIOR - WHITE (ONLY ONE KNOWN; NOT TOO FROSTY WITH LIGHT GOLD HIGHLIGHTS BUT FIND ANOTHER ONE!)
- 90 44. N Raspberry ftd. Occasional Piece or Gravy - Green (scarce)
- 1400 45. N RASPBERRY WATER PITCHER - WHITE (EXTREMELY RARE WITH SUPER FROSTY COLOR AND GREAT MULTI-COLORED IRID.)
- 2000 46. N RASPBERRY MILK PITCHER - WHITE (EXTREMELY RARE; SELDOM SOLD; GREAT COLOR AND IRID.)
- 2200 47. N RASPBERRY MILK PITCHER - ICE BLUE (ANOTHER EXTREMELY RARE ITEM; SUPER COLOR AND IRID.)
- 350 48. N Raspberry Milk Pitcher - Pur. (scarce with really nice color & irid.)
- 575 49. N Raspberry Milk Pitcher - Green (very scarce; nice color & irid.)
- 230 50. N Raspberry Milk Pitcher - Dk. Mari. (very nice example; super color)
- 700 51. N Raspberry 7 pc. Water Set - Pur. (very scarce set; well matched)
- 275 52. N FINE CUT AND ROSES FTD. ROSE BOWL WITH FANCY INTERIOR - ICE BLUE (VERY SCARCE; FEET ARE GOOD)
- 155 53. N Fine Cut & Roses ftd. Rose Bowl - Green (scarce; good feet)
- 55 54. N Fine Cut & Roses ftd. Rose Bowl - Custard / Nutmeg (scarce; nice Nutmeg finish)
- 10000 55. N G & C FTD. HATPIN HOLDER - AQUA OPAL. (AN EXTREMELY RARE ITEM IN OUR HOBBY; THIS IS THE ONE WITH SMALL EP-OXIED FLAKE AT THE BOTTOM OF ONE FOOT)
- 2600 56. N G & C FTD. HATPIN HOLDER - ICE BLUE (EXTREMELY RARE; SUPER DARK COLOR WITH GREAT IRID.)
- 1000 57. N G & C FTD. HATPIN HOLDER - ICE GREEN (VERY RARE; GREAT COLOR; THERE ARE A COUPLE OF SMALL FLAKES AT THE BOTTOM OF THE FEET)
- 2200 58. N G & C FTD. HATPIN HOLDER - WHITE (VERY RARE; SUPER FROSTY WITH GREAT IRID.; A GREAT ITEM)
- 1700 59. N G & C FTD. HATPIN HOLDER - BLUE (SUPER RARE COLOR FOR THIS ITEM - NOT TOO MANY AROUND)
- 650 60. N G & C FTD. HATPIN HOLDER - EMERALD GREEN (REALLY NICE COLOR WITH GREAT IRID.; AN ODD TINT COMPARED WITH OTHERS)
- 275 61. N G & C ftd. Hatpin Holder - Green (scarce; nice color & condition)
- 300 62. N G & C ftd. Hatpin Holder - Dk. Mari. (super color; scarce)
- 275 63. N G & C ftd. Hatpin Holder - Pur. (super color; very desirable)
- 300 64. N G & C ftd. Hatpin Holder - Pur. (super color; very desirable)
- 200 65. N G & C PERFUME BOTTLE AND STOPPER - PUR. (VERY RARE WITH VERY NICE COLOR AND IRID.)
- 165 66. (2) N G & C COLOGNE BOTTLES AND STOPPERS - PUR. (SELLING CHOICE; VERY NICE COLOR AND IRID.)
- 275 67. N G & C SMALL PIN TRAY - PUR. (VERY SCARCE; NICE IRID.)
- 130 68. N G & C Large Dresser Tray - Pur. (very scarce; nice color & irid.)
- 170 69. N G & C Covered Powder Jar - Pur. (very scarce; nice color)
- 40 70. N G & C Punch Cup Flattened Nappy - Pur. (very scarce)
- 650 71. N G & C LARGE OPEN COMPOTE - PUR. (VERY SCARCE AND UNDERRATED; TOUGH TO FIND)
- 265 72. N G & C Covered Sweetmeat Compote - Pur. (very scarce with nice color & irid.)
- 205 73. 6" N G & C Small Plate with Basketweave Exterior - Lt. Amy. (scarce; odd tint)
- 95 74. 9" N G & C Variant Plate with Plain Exterior - Pastel Mari. (scarce item with super irid.)
- 16250 75. N G & C FTD. FERNERY - ICE GREEN (EXTREMELY RARE AND SUPER - ONE OF THE ONLY PERFECT ONES I KNOW OF)
- 1600 76. N G & C FTD. FERNERY - ICE BLUE (VERY RARE; SUPER COLOR WITH GREAT IRID.)
- 750 77. N G & C SMALL SIZE FTD. FRUIT BOWL - ICE BLUE (RARE ITEM WITH EXCELLENT COLOR AND IRID.)
- 400 78. N G & C FTD. BANANA BOAT - ICE BLUE (SUPER SCARCE; VERY NICE COLOR AND IRID.)
- 200 79. N G & C COVERED CRACKER JAR - WHITE (SUPER RARE WITH GREAT COLOR AND IRID.; A GREAT ITEM)
- 5000 80. N G & C TANKARD WATER PITCHER - ICE GREEN (EXTREMELY RARE AND SELDOM SOLD - A REAL RARITY)
- 1400 81. N G & C 7 PC. TANKARD WATER SET - PUR. (VERY RARE SET; COMPLETE AND WELL MATCHED)
- 300 82. N G & C ftd. Banana Boat - Green (rare with excellent irid.)
- 225 83. N G & C Small Size ftd. Fruit Bowl - Green (scarce color with excellent irid.)
- 195 84. N G & C Large Size ftd. Fruit Bowl - Dk. Mari. (excellent color)
- 1250 85. N G & C VARIANT STIPPLED RUFFLED BOWL WITH RIBBED EXTERIOR - AQUA / TEAL (EXTREMELY RARE COLOR; VERY DESIRABLE; SUPER)
- 450 86. N G & C STIPPLED PLATE WITH BASKETWEAVE EXTERIOR - GREEN (RARE AND BECOMING VERY DESIRABLE)
- 450 87. N G & C VARIANT STIPPLED PLATE WITH RIBBED EXTERIOR AND OLD ROSE ADVERT. - GREEN (VERY SCARCE AND VERY DESIRABLE; TYPICAL NICE COLOR)
- 1300 88. N G & C 8 PC. WHISKEY SET (DECANTER, STOPPER, 6 SHOT GLASSES) - DK. MARI. (RARE SET; ONE OF THE FIRST COMPLETE SETS WE'VE SOLD)
- 2500 89. N G & C 14 PC. BANQUET PUNCH SET - DK. MARI. (SUPER SET WITH NICE MULTI-COLORED IRID.)
- 700 90. N G & C VARIANT STIPPLED PLATE WITH RIBBED EXTERIOR - DK. MARI. (SUPER COLOR WITH GREAT IRID.)
- 25 91. N Daisy & Plume Stemmed Rose Bowl - Mari.
- 25 92. N Diamond Point Swung Vase - Amy.
- 90 93. N Wild Strawberry Handgrip Plate with Basketweave Exterior - Dk. Mari. (scarce with great color)
- 800 94. N STRAWBERRY STIPPLED BOWL WITH PIE CRUST EDGE AND RIBBED EXTERIOR - ELEC. BLUE (VERY DESIRABLE; A NEAT ITEM WITH GREAT COLOR AND IRID.)

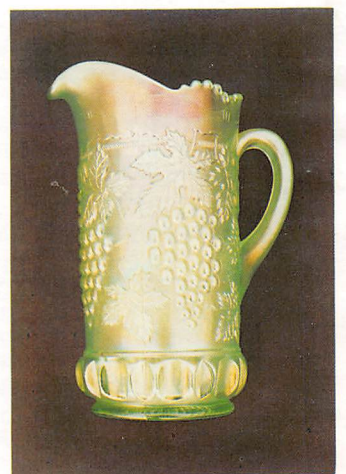
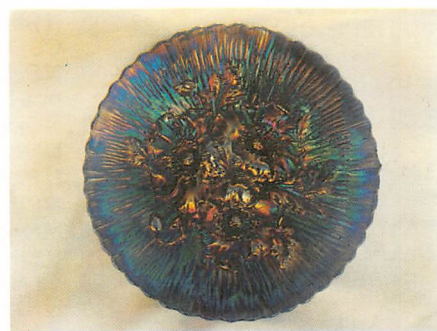
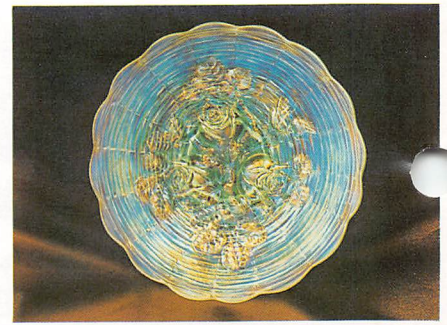
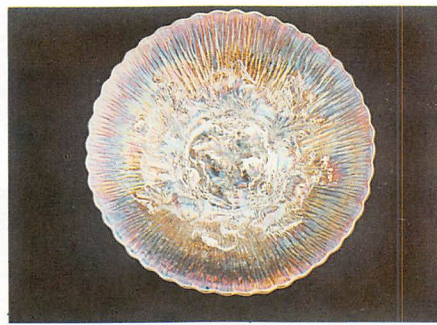
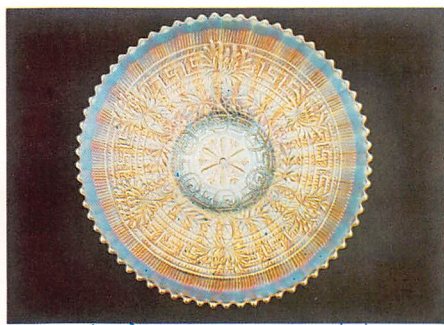
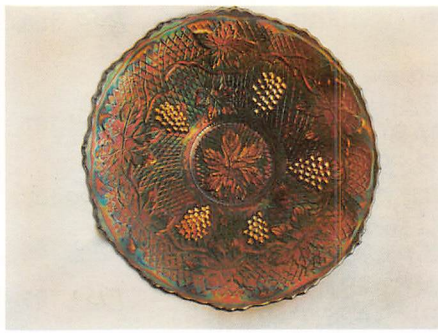
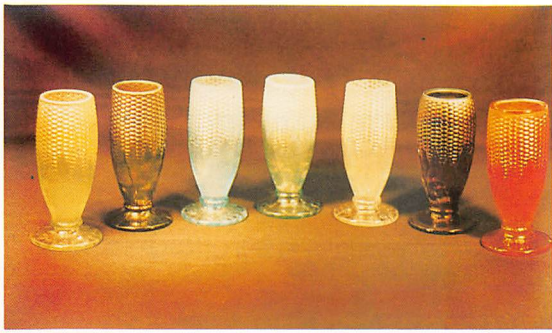


- 1150 95. N STRAWBERRY STIPPLED PLATE WITH BASKETWEAVE EXTERIOR - GREEN (EXTREMELY RARE ITEM WITH EXCELLENT COLOR AND IRID.)
- 230 96. N WISHBONE FTD. RUFFLED BOWL WITH RUFFLES AND RINGS EXTERIOR - ICE BLUE (RARE COLOR; HAS SMALL FLAKE ON UNDERSIDE OF EDGE)
- 1900 97. 10" N WISHBONE CHOP PLATE WITH BASKETWEAVE EXTERIOR - PUR. (A REALLY RARE ITEM NOT OFTEN SOLD; NICE SATINY FINISH)
- 1250 98. N WISHBONE FTD. PLATE WITH RUFFLES AND RINGS EXTERIOR - DK. MARI. (RARE; GREAT COLOR AND VERY DESIRABLE)
- 110 99. N Wishbone ftd. Plate with Ruffles & Rings Exterior - Pur. (manuf. flaw; has chip on underside of one point)
- 3500 100. N CORN VASE WITH STALK BASE - AQUA OPAL. (EXTREMELY RARE; FANTASTIC OPAL.; HAS LONG SLIVER AT MOLD LINE OF BASE)
- 1450 101. N CORN VASE WITH STALK BASE - ICE BLUE (EXTREMELY RARE AND PROBABLY ONE OF THE FINEST DARK EXAMPLES KNOWN)
- 1300 102. N CORN VASE WITH PLAIN BASE - DK. MARI. (SUPER RARE AND, AGAIN, ONE OF THE FINEST DARK EXAMPLES KNOWN)
- 650 103. N CORN VASE WITH STALK BASE - GREEN (SUPER COLOR; VERY SCARCE - NICE COLOR AND IRID.)
- 600 104. N CORN VASE WITH PLAIN BASE - PUR. (RARE; NICE AVERAGE COLOR AND IRID.)
- 450 105. N CORN VASE WITH STALK BASE - ODD ICE GREEN (ODD TINT; VERY SCARCE COLORED ITEM)
- 375 106. N CORN VASE WITH STALK BASE - WHITE (VERY SCARCE; NICE IRID.)
- 675 107. N TORNADO LARGE SIZE VASE - GREEN (RARE ITEM; TOUGH SIZE TO FIND)
- 35 108. N Double Loop Chalice (or Open Sugar) - Elec. Blue (super color & irid.)
- 80 109. N Grape & Gothic Arches 7 pc. Berry Set - Dk. Mari. (nice dark color)
- 4800 110. N DAISY AND DRAPE TURNED IN FTD. VASE - ICE GREEN (EXTREMELY RARE COLOR - A TOUGH COLOR FOR A DESIRABLE PATTERN)
- 500 111. N DAISY AND DRAPE TURNED IN FTD. VASE - DK. MARI. (SUPER COLOR; VERY SCARCE)
- 160 112. N Daisy & Drape Turned In ftd. Vase - White (very scarce; nice)
- 600 113. N DAISY AND DRAPE FLARED FTD. VASE - AQUA OPAL. (VERY RARE; NICE COLOR AND OPAL.)
- 700 114. N DAISY AND DRAPE FLARED FTD. VASE - BLUE (RARE COLOR; VERY NICE COLOR AND IRID.)
- 1500 115. N DRAPERY ROSE BOWL - ICE GREEN (EXTREMELY RARE COLOR FOR THIS ITEM; ONLY A COUPLE KNOWN; NICE)
- 700 116. N DRAPERY ROSE BOWL - ICE BLUE (RARE; VERY DESIRABLE; NICE FROSTY FINISH)
- 800 117. N DRAPERY ROSE BOWL WITH PLAIN EDGE - WHITE (RARE; ODD VARIATION; NICE FROSTY FINISH)
- 230 118. N DRAPERY ROSE BOWL - AQUA OPAL. - RARE; NICE COLOR AND SUPER IRID.)
- 1000 119. N DRAPERY ROSE BOWL - ELEC. BLUE (VERY RARE; ONE OF THE FINEST EXAMPLES KNOWN; FANTASTIC BLUE IRID.)
- 325 120. N DRAPERY ROSE BOWL - PUR. (VERY SCARCE ITEM IN THIS COLOR)
- 1350 121. N NIPPON PLATE WITH RIBBED EXTERIOR - WHITE (EXTREMELY RARE ITEM; ONE OF ONLY A FEW KNOWN)
- 450 122. N NIPPON PLATE WITH BASKETWEAVE EXTERIOR - PUR. (RARE COLOR TO FIND IN THIS PATTERN)
- 850 123. N NIPPON BOWL WITH PIE CRUST EDGE AND RIBBED EXTERIOR - ICE GREEN (VERY SCARCE; SUPER COLOR AND IRID.)
- 500 124. N NIPPON RUFFLED BOWL WITH BASKETWEAVE EXTERIOR - EMERALD GREEN (SCARCE ITEM WITH FANTASTIC IRID.)
- 5500 125. N WATERLILY AND CATTAIL CONE SHAPED WATER PITCHER - BLUE (EXTREMELY RARE; THIS IS THE ONLY ONE KNOWN AND IS SUPER)
- 5750 126. N GREEK KEY PLATE WITH RIBBED EXTERIOR - DK. MARI. (SUPER ITEM; HAS GREAT BRIGHT HIGHLIGHTS AND A GREAT FINISH)
- 300 127. N GREEK KEY PLATE WITH BASKETWEAVE EXTERIOR - GREEN (RARE WITH NICE SATINY HIGHLIGHTS - VERY NICE)
- 600 128. N GREEK KEY BOWL WITH PIE CRUST EDGE AND BASKETWEAVE EXTERIOR - GREEN (VERY SCARCE; THE BEST EXAMPLE)
- 70 129. N Greek Key Tumbler - Pur. (scarce item)
- 700 130. N GREEK KEY TANKARD WATER PITCHER - PUR. (RARE ITEM THAT'S UNDERPRICED; NICE!)
- 1400 131. N LEAF AND BEADS FTD. ROSE BOWL - ICE BLUE OPAL. (FANTASTIC COLOR ON A POPULAR ITEM - SUPER!)
- 95 132. N Leaf & Beads ftd. Rose Bowl - Blue (very scarce; nice irid.)
- 105 133. N Leaf & Beads ftd. Rose Bowl - Dk. Mari. (nice dark color)
- 750 134. 9 1/2" N FRUIT AND FLOWERS LARGE RUFFLED BOWL WITH BASKETWEAVE EXTERIOR - ICE GREEN (VERY RARE PASTEL WITH GREAT COLOR AND IRID.)
- 8500 135. N GOOD LUCK PLATE WITH RIBBED EXTERIOR - ELEC. BLUE (ABSOLUTELY FANTASTIC - THIS HAS TO BE ONE OF NORTHWOOD'S FINEST ITEM - EVER!)
- 3500 136. N GOOD LUCK PLATE WITH RIBBED EXTERIOR - ELEC. BLUE (IF NOT FOR THE PREVIOUS ITEM, THIS WOULD BE IT!)
- 525 137. N GOOD LUCK PLATE WITH BASKETWEAVE EXTERIOR - GREEN (RARE WITH A NICE SATINY FINISH - A NICE EXAMPLE)
- 425 138. N GOOD LUCK PLATE WITH BASKETWEAVE EXTERIOR - AMY. (VERY SCARCE; HAS A SATINY FINISH)
- 325 139. N GOOD LUCK PLATE WITH BASKETWEAVE EXTERIOR - MARI. (SCARCE; NICE SATINY FINISH)
- 2100 140. N GOOD LUCK BOWL WITH PIE CRUST EDGE AND RIBBED EXTERIOR - ICE BLUE (VERY RARE WITH NICE IRID.; BASE GLASS A BIT LIGHT)
- 425 141. N Good Luck Bowl with Pie Crust Edge & Ribbed Exterior - Pur. (scarce with nice irid.)
- 235 142. N GOOD LUCK BOWL WITH PIE CRUST EDGE AND RIBBED EXTERIOR - BLUE (SCARCE WITH NICE IRID.)
- 425 143. N Good Luck Bowl with Pie Crust Edge & Basketweave Exterior - Green (scarce with a nice satiny finish)
- 275 144. N Good Luck Bowl with Pie Crust Edge & Ribbed Exterior - Dk. Mari. (super color & irid.)
- 3800 145. N GOOD LUCK RUFFLED BOWL WITH RIBBED EXTERIOR - ICE BLUE OPAL. (VERY RARE COLOR WITH NICE OPAL.)
- 1700 146. N GOOD LUCK RUFFLED BOWL WITH RIBBED EXTERIOR - AQUA OPAL. (ANOTHER RARITY WITH SUPER OPAL.)
- 1000 147. N GOOD LUCK RUFFLED BOWL WITH RIBBED EXTERIOR - AQUA TEAL (RARE COLOR WITH SUPER IRID.)
- 1300 148. N GOOD LUCK RUFFLED BOWL WITH RIBBED EXTERIOR - AQUA TEAL (ANOTHER RARE ONE; JUST ABOUT LIKE ABOVE)
- 300 149. N GOOD LUCK RUFFLED BOWL WITH RIBBED EXTERIOR - HOREHOUND (VERY RARE TINT; DIFFERENT THAN THE REST)
- 375 150. N GOOD LUCK RUFFLED BOWL WITH RIBBED EXTERIOR - ELEC. BLUE (SUPER COLOR AND GREAT IRID. - NOT BAD!)
- 475 151. N GOOD LUCK STIPPLED RUFFLED BOWL WITH RIBBED EXTERIOR - ELEC. BLUE (SUPER IRID.; VERY SCARCE WITH A NARROW BASE)

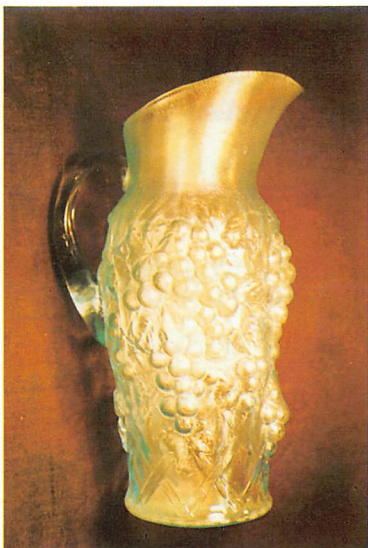
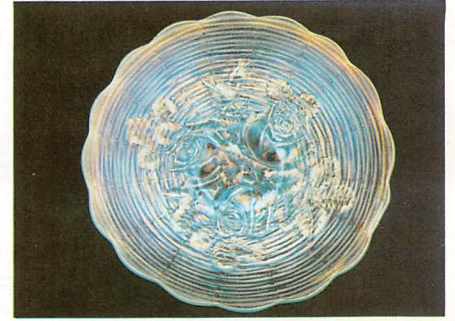
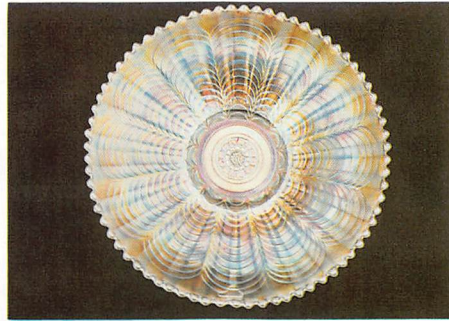
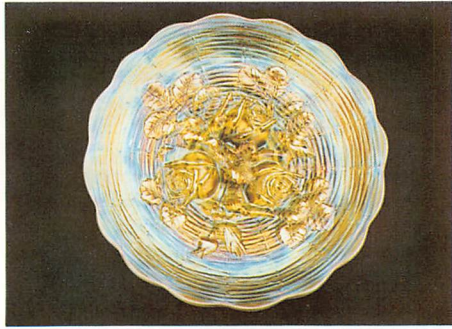


- 350 152. N POPPY RELISH TRAY - ICE BLUE (RARE; PERFECT WITH VERY NICE IRID.)
- 150 153. N Poppy Relish Tray - Elec. Blue (super color & irid.)
- 3700 154. N GRAPE ARBOR 7 PC. TANKARD WATER SET - ICE BLUE (VERY RARE TO FIND A COMPLETE SET - SUPER FROSTY)
- 1850 155. N DIAMOND POINT HANDLED BUSHEL BASKET - DK. MARI. (EXTREMELY RARE; ONE OF THE TOUGHEST PATTERNS)
- 1600 156. N ROUND BUSHEL BASKET - SAPPHIRE BLUE (EXTREMELY RARE BASE COLOR IN THIS SHAPE - NICE!)
- 800 157. N ROUND BUSHEL BASKET - ICE BLUE (VERY RARE; JUST ABOUT EVERYONE NEEDS A ROUND ONE)
- 375 158. N ROUND BUSHEL BASKET - AQUA WITH OPAL. HANDLES (RARE WITH REALLY NICE IRID.)
- 375 159. N ROUND BUSHEL BASKET - AQUA OPAL. (RARE - NICE COLOR AND OPAL.)
- 375 160. N ROUND BUSHEL BASKET - HOREHOUND (ANOTHER KEY COLOR; SUPER IRID.)
- 600 161. N ROUND BUSHEL BASKET - EMERALD GREEN (RARE; NICE BRIGHT BASE GLASS AND IRID.)
- 375 162. N ROUND BUSHEL BASKET - GREEN (RARE; TOUGH COLOR TO FIND)
- 165 163. N Round Bushel Basket - Ice Green (scarce; excellent irid.; has tiny nick off knob under one foot)
- 160 164. N Round Bushel Basket - White (scarce; nice irid.)
- 110 165. N Round Bushel Basket - Blue (scarce; nice color)
- 140 166. N Round Bushel Basket - Dk. Mari. (nice color & irid.)
- 725 167. N EIGHT SIDED BUSHEL BASKET - ICE BLUE (RARE; NICE AND FROSTY WITH GOOD IRID.)
- 625 168. N EIGHT SIDED BUSHEL BASKET - ICE GREEN (RARE; NOT TOO EASY TO FIND)
- 450 169. N EIGHT SIDED BUSHEL BASKET - GREEN (VERY SCARCE; NICE COLOR AND IRID.)
- 125 170. N Eight Sided Bushel Basket - White (scarce; nice & frosty)
- 155 171. N Eight Sided Bushel Basket - Dk. Mari. (nice dark color & irid.)
- 4000 172. 19 1/2" N TREE TRUNK SWUNG FUNERAL VASE - MARI. (EXTREMELY RARE; NICE AND DARK AND VERY DESIRABLE)
- 2600 173. 17" N TREE TRUNK SWUNG FUNERAL VASE - PUR. (RARE ITEM WITH BRIGHT GOLD IRID.)
- 800 174. 12" N TREE TRUNK MID-SIZE SWUNG VASE - ICE BLUE (VERY RARE WITH SUPER IRID.; NICE AND FROSTY)
- 6500 175. N POPPY SHOW PLATE - GREEN (EXTREMELY DESIRABLE; NICE BRIGHT COLOR AND IRID.)
- 2000 176. N POPPY SHOW PLATE - ELEC. BLUE (VERY RARE WITH SUPER IRID. AND COLOR)
- 1050 177. N POPPY SHOW PLATE - PUR. (RARE WITH GREAT IRID.; HAS TINY, TINY FLAKE ON COLLAR BASE)
- 2300 178. N POPPY SHOW PLATE - ICE BLUE (RARE; NICE AND FROSTY; SUPER IRID.)
- 750 179. N POPPY SHOW PLATE - WHITE (VERY SCARCE; UNDERPRICED)
- 2500 180. N POPPY SHOW PLATE - DK., DK. MARI. (VERY DESIRABLE; THIS HAS TO BE ONE OF THE DARKEST EXAMPLES; REALLY FLAT AND SUPER)
- 2000 181. N POPPY SHOW RUFFLED BOWL - GREEN (VERY RARE; VERY DESIRABLE WITH NICE COLOR)
- 850 182. N POPPY SHOW RUFFLED BOWL - ICE GREEN (VERY RARE; NICE AND FROSTY - REALLY NICE!)
- 1000 183. N ROSE SHOW VARIANT PLATE WITH RIBBED EXTERIOR - MARI. (VERY RARE; SUPER IRID.; A TOUGH ITEM)
- 2200 184. N ROSE SHOW PLATE - GREEN (VERY RARE ITEM; TOUGH! A BIT SILVERY IN THE MIDDLE)
- 1400 185. N ROSE SHOW PLATE - ELEC. BLUE (SUPER SCARCE; WITH GREAT COLOR AND IRID.)
- 1050 186. N ROSE SHOW PLATE - LIME ICE GREEN (EXTREMELY RARE; SUPER COLOR; HAS 1/2" CHIP OFF ONE ROSE AND AREA OF BASE GLASS ROUGHNESS - WHO CARES!?)
- 1750 187. N ROSE SHOW PLATE - ICE GREEN (EXTREMELY RARE WITH SUPER COLOR AND IRID.; HAS THE TINIEST FLAKE ON BOTTOM OF BASE)
- 2750 188. N ROSE SHOW PLATE - ICE BLUE (TOUGH ITEM; NICE AND FROSTY WITH SUPER IRID.)
- 600 189. N ROSE SHOW PLATE - WHITE (TOUGH ITEM; NICE AND FROSTY WITH NICE IRID.)
- 1750 190. N ROSE SHOW PLATE - DK. MARI. (RARE; NICE RED HIGHLIGHTS AND PERFECT)
- 1400 191. N ROSE SHOW RUFFLED BOWL - ICE GREEN (VERY RARE ITEM; GREAT COLOR AND IRID.)
- 1250 192. N ROSE SHOW RUFFLED BOWL - AQUA OPAL. (ALWAYS IN DEMAND; VERY NICE OPAL.)
- 1650 193. N ORIENTAL POPPY 7 PC. TANKARD WATER SET - DK. MARI. (SCARCE AND UNDERPRICED; THESE ARE GETTING TOUGHER)
- 2100 194. N DANDELION 7 PC. TANKARD WATER SET - GREEN (EXTREMELY RARE SET; NICE IRID. AND WELL MATCHED)
- 1300 195. N DANDELION - KNIGHTS TEMPLAR MUG - ICE GREEN (VERY RARE; ABOVE AVERAGE COLOR AND IRID.)
- 900 196. N DANDELION - KNIGHTS TEMPLAR MUG - ICE BLUE (VERY RARE; NICE COLOR AND IRID.)
- 425 197. N DANDELION MUG - AQUA OPAL. (RARE; NICE COLOR AND VERY NICE OPAL.)
- 750 198. N DANDELION MUG - GREEN (VERY RARE; A TOUGH ONE TO FIND)
- 750 199. N DANDELION MUG - BLUE (EXTREMELY RARE COLOR WITH REALLY NICE IRID.)
- 250 200. N DANDELION MUG - PUR. (SCARCE; NICE IRID.)
- 650 201. N DANDELION - KNIGHTS TEMPLAR MUG - DK. MARI. (VERY DARK; NICE COLOR WITH NICE IRID.)
- 1300 202. N PEACH 7 PC. WATER SET - ELEC. BLUE (SUPER COLOR AND VERY DESIRABLE; WELL MATCHED)
- 1250 203. N ACORN BURR 7 PC. WATER SET - GREEN (A VERY RARE SET; TOUGH TO FIND ALL COMPLETE - NICE!)
- 2000 204. N SPRINGTIME 7 PC. WATER SET - PUR. (VERY RARE; PROBABLY THE TOUGHEST COLOR IN THIS PATTERN)
- 1050 205. N SINGING BIRD MUG - AQUA OPAL. (VERY RARE; NICE OPAL. AND SUPER IRID.)
- 750 206. N SINGING BIRD MUG - WHITE (VERY RARE; UNDERPRICED)
- 350 207. N SINGING BIRD MUG - ICE BLUE (VERY RARE; ANOTHER TOUGH ONE; NICE COLOR)
- 200 208. N SINGING BIRD MUG - LAVENDER (VERY RARE BASE COLOR; SUPER IRID.)
- 105 209. N Singing Bird Mug - Pastel Amy. (another odd tint with really nice irid.)
- 70 210. N Singing Bird Mug - Pur. (scarce)
- 175 211. N Singing Bird Mug - Green (very scarce; nice color)
- 55 212. N Singing Bird Mug - Green (very scarce; like above)
- 250 213. N Singing Bird Mug - Elec. Blue (scarce; super color & irid.)
- 75 214. N Singing Bird Mug - Dk. Mari. (super irid.; nice)
- 1600 215. N SINGING BIRD STIPPLED MUG - GREEN (EXTREMELY RARE ITEM; VERY TOUGH TO FIND)
- 150 216. N Singing Bird Stippled Mug - Pastel Mari. (scarce; nice color)
- 95 217. N Singing Bird Stippled Mug - Mari. (scarce; nice color)
- 35 218. Westmoreland Estate Handled Mug - Lt. Mari. (scarce)
- 45 219. Dugan Miniature Basketweave Handled Flower Basket - Mari.
- 205 220. Westmoreland Plain Handled Syrup Jug with Underplate - Dk. Mari. (very rare to find complete; super color)
- 50 221. Pair (Imperial ?) 8 Panelled Salt & Pepper Shakers - Dk. Mari. (scarce; unusual pair; one has small hairline near top at lid)
- 60 222. Unsigned Devilbis Stemmed Perfume Bottle & Stopper - Mari. (scarce; desirable)
- 45 223. Unsigned Devilbis Stemmed Atomizer (no Bulb) - Mari. (scarce)
- 30 224. Pair Imperial Soda Gold Squatty Candlesticks - Mari.
- 10 225. Pair Imperial Panelled Candlesticks - Mari.











## START OF SECOND SESSION

- 17.50 226. Imperial Wide Panel Handled Parfait Mug - Dk. Mari. (nice color)
- 17.50 227. Fenton Orange Tree Stemmed Goblet - Mari.
- 37.50 228. Fenton Holly Stemmed Ruffled Compote - Mari. / Lime Green Base (nice base color)
- 125 229. Westmoreland Little Bo-Peep Mug - Lt. Mari. (scarce pattern)
- 3100 230. **DUGAN HERON MUG - DK. MARI. (ABSOLUTELY FANTASTIC RARITY; GREAT COLOR AND DETAIL; A SUPER ITEM)**
- 280 231. DUGAN HERON MUG - PUR. (RARE; NICE DETAIL)
- 1000 232. DUGAN STORK AND RUSHES WITH LATTICE BAND MUG - BLUE (EXTREMELY RARE COLOR FOR THIS ITEM; VERY FEW KNOWN)
- 130 233. Dugan Stork & Rushes with Lattice Band Mug - Amy. (extremely scarce; nice color & detail)
- 15 234. Dugan Stork & Rushes with Lattice Band Mug - Mari.
- 725 235. **DUGAN BEADED SHELL MUG - WHITE (VERY RARE; GREAT IRID.; NICE DETAIL)**
- 300 236. Dugan Beaded Shell Mug - Dk. Mari. (very scarce; nice color & irid.)
- 40 237. Dugan Beaded Shell Mug - Amy. (nice color & irid.)
- 375 238. **DUGAN FISHERMANS MUG - DK. MARI. (SUPER COLOR AND DETAIL; VERY SCARCE)**
- 100 239. Dugan Fishermans Mug - Pur. (nice color)
- 4750 240. **N PEACOCKS BOWL WITH PIE CRUST EDGE AND RIBBED EXTERIOR - DK. ICE BLUE (ABSOLUTELY FANTASTIC EXAMPLE; PROBABLY ONE OF THE BEST KNOWN - SUPER COLOR)**
- 900 241. **N PEACOCKS BOWL WITH PIE CRUST EDGE AND RIBBED EXTERIOR - GREEN (EXTREMELY RARE; GREAT COLOR AND IRID.)**
- 275 242. N Peacocks Bowl with Pie Crust Edge & Ribbed Exterior - Dk. Mari. (very scarce; nice color)
- 235 243. N Peacocks Bowl with Pie Crust Edge & Ribbed Exterior - Mari. (scarce)
- 1700 244. **N PEACOCKS STIPPLED PLATE WITH RIBBED EXTERIOR - RENNINGER BLUE (VERY RARE COLOR FOR THIS PATTERN)**
- 350 245. N Peacocks Stippled Plate with Ribbed Exterior - Mari. (very scarce; nice color)
- 2250 246. **N PEACOCKS PLATE WITH RIBBED EXTERIOR - ICE BLUE (VERY RARE AND BRIGHT IRID.; THE LAST OF MANY UPGRADES)**
- 550 247. **N PEACOCKS PLATE WITH RIBBED EXTERIOR - WHITE (VERY SCARCE; NICE IRID. AND FROSTY)**
- 425 248. **N PEACOCKS PLATE WITH RIBBED EXTERIOR - ICE GREEN (SCARCE WITH SUPER IRID.)**
- 1500 249. **N PEACOCKS PLATE WITH RIBBED EXTERIOR - GREEN (VERY RARE WITH GREAT COLOR AND IRID.)**
- 750 250. **N PEACOCKS PLATE WITH RIBBED EXTERIOR - SODA GOLD / AMY. (RARE TINT; A KEY COLOR)**
- 450 251. **N PEACOCKS PLATE WITH RIBBED EXTERIOR - DK. MARI. (VERY SCARCE; NICE COLOR AND IRID.)**
- 1050 252. **N PEACOCKS RUFFLED BOWL WITH RIBBED EXTERIOR - ICE GREEN (RARE ITEM WITH NICE MULTI-COLORED IRID.)**
- 1650 253. **N PEACOCKS RUFFLED BOWL WITH RIBBED EXTERIOR - GREEN (VERY RARE; NICE COLOR AND VERY NICE IRID.)**
- 325 254. **N PEACOCKS RUFFLED BOWL WITH RIBBED EXTERIOR - AQUA OPAL. (RARE AND DESIRABLE; NICE COLOR; HAS CHIP OFF ONE POINT ON INSIDE EDGE)**
- 900 255. **N PEACOCKS RUFFLED BOWL WITH RIBBED EXTERIOR - AQUA OPAL. (PERFECT; NICE COLOR AND VERY NICE OPAL.)**
- 700 256. **N PEACOCKS RUFFLED BOWL WITH RIBBED EXTERIOR - WHITE (RARE ITEM; NICE AND FROSTY WITH SUPER IRID.)**
- 750 257. **N PEACOCKS RUFFLED BOWL WITH RIBBED EXTERIOR - ELEC. BLUE (SUPER COLOR AND IRID.; NICE BRIGHT HIGHLIGHTS)**
- 350 258. N Peacocks Stippled Ruffled Bowl with Ribbed Exterior - Mari. (scarce; nice multi-colored irid.)
- 25 259. N Wishbone Tumbler - Pur. (scarce; nice color)
- 2000 260. **N WISHBONE BULBOUS WATER PITCHER - PUR. (RARE AND EXTREMELY DESIRABLE; SUPER NICE)**
- 1900 261. **N THREE FRUITS STIPPLED PLATE WITH RIBBED EXTERIOR - AQUA OPAL. (EXTREMELY DESIRABLE ITEM; SUPER OPAL.; JUST A HINT OF WEAR ON FRUIT)**
- 500 262. **N THREE FRUITS STIPPLED PLATE WITH RIBBED EXTERIOR - AQUA / TEAL (VERY RARE COLOR FOR THIS ITEM; HAS FLAKE ON OUTSIDE EDGE OF ONE POINT)**
- 475 263. **N THREE FRUITS STIPPLED PLATE WITH RIBBED EXTERIOR - LT. AMY OR LAVENDER (VERY SCARCE; NICE BRIGHT COLOR AND IRID.)**
- 650 264. **N THREE FRUITS STIPPLED PLATE WITH RIBBED EXTERIOR - ELEC. BLUE (SUPER COLOR AND IRID. ON A VERY POPULAR ITEM)**
- 275 265. **N THREE FRUITS STIPPLED RUFFLED FTD. BOWL WITH MEANDER EXTERIOR - DK. ICE GREEN (RARE ITEM; NICE COLOR BUT HAS SANDED FLAKE ON OUTER EDGE)**
- 525 266. **N THREE FRUITS STIPPLED RUFFLED FTD. BOWL WITH MEANDER EXTERIOR - AQUA OPAL. (RARE; NICE IRID. AND VERY NICE OPAL.)**
- 325 267. N Three Fruits Stippled Ruffled ftd. Bowl with Meander Exterior - Aqua Opal. (manuf. flaw on edge)
- 625 268. **N FRUIT AND FLOWERS STEMMED HANDLED BON BON - ICE BLUE (RARE COLOR; NICE IRID.)**
- 650 269. **N FRUIT AND FLOWERS STEMMED HANDLED BON BON - AQUA OPAL. (RARE AND DESIRABLE COLOR AND IRID.)**
- 215 270. N Fruit & Flowers Stemmed Handled Bon Bon - Elec. Blue (super irid.; nice color)
- 175 271. N Fruit & Flowers Stemmed Handled Bon Bon - Green
- 120 272. N Fruit & Flowers Stemmed Handled Bon Bon - Dk. Mari.
- 1150 273. **N BEADED CABLE FTD. ROSE BOWL - ICE GREEN (RARE; NICE FROSTY COLOR AND IRID.)**
- 190 274. N Beaded Cable ftd. Rose Bowl - Ice Green (rare but has a hairline by one foot)
- 600 275. **N BEADED CABLE FTD. ROSE BOWL - POWDER ICE BLUE (RARE TINT; A BIT DARKER THAN MOST; NICE)**
- 300 276. **N BEADED CABLE FTD. ROSE BOWL - AQUA OPAL. (SCARCE; ALWAYS IN DEMAND; NICE OPAL.)**
- 350 277. **N BEADED CABLE FTD. ROSE BOWL - WHITE (VERY SCARCE; FROSTY WITH NICE IRID.)**
- 150 278. N Beaded Cable ftd. Rose Bowl - Elec. Blue (super color & irid.; very desirable)
- 250 279. N Beaded Cable ftd. Rose Bowl - Green (very scarce color; nice)
- 100 280. N Beaded Cable ftd. Rose Bowl with Ribbed Interior - Amy.
- 150 281. N Beaded Cable ftd. Rose Bowl with Ribbed Interior - Lt. Amy.
- 230 282. N Beaded Cable ftd. Rose Bowl with Ribbed Interior - Green
- 130 283. N Beaded Cable ftd. Rose Bowl - Dk. Mari.
- 110 284. N Beaded Cable ftd. Rose Bowl - Blue Opal. (not Carnival; nice)
- 225 285. N Oriental Poppy 7 pc. Tankard Water Set - Crystal Blue / Gold Decor. (not Carnival; very scarce set; not too many complete sets sold)
- 600 286. N Peach 7 pc. Water Set - Green with Gold (not Carnival; scarce set with nice gold decor.)
- 250 287. N Strawberry & Cable Large Size 7 pc. Water Set - Crystal / Gold Flash Decor. (scarce set)
- 180 288. N Enameled Decorated Daisy Tankard 7 pc. Water Set - Crystal (made from Oriental Poppy mold)
- 60 289. Script Signed Northwood Nautilus 2 sided Open Sugar - P (scarce; nice irid.)
- 250 290. Script Signed Northwood Nautilus Novelty Creamer - P. Opal. (very scarce; nice color)
- 120 291. Dugan Nautilus Novelty Creamer - Lt. P. Opal. (scarce)



- 225 292. DUGAN RIBBED INTERIOR / JEWELLED HEART EXTERIOR CRIMPED EDGE HANDLED BASKET - P. OPAL. (VERY RARE & DESIRABLE ITEM; A CUTIE)
- 600 293. DUGAN FORMAL HATPIN HOLDER - PUR. (RARE ITEM; NICE DARK COLOR)
- 210 294. DUGAN FORMAL HATPIN HOLDER - LT. MARI. (VERY SCARCE; LIGHT WITH NICE IRID.)
- 4600 295. DUGAN CHRISTMAS COMPOTE - PUR. (EXTREMELY DESIRABLE; WITH EXCELLENT COLOR)
- 80 296. 7" Dugan Grapevine Lattice Low Ruffled Bowl - Pur. (super irid.)
- 50 297. 6 1/4" Dugan Pods & Posies Flat Plate - P. Opal. (scarce; super opal.; has small flake on base)
- 425 298. DUGAN AMARYLLIS STEMMED FLAT PLATE - LT. MARI. (VERY SCARCE; A NICE ITEM)
- 450 299. Dugan Heavy Iris 5 pc. Tankard Water Set - Pur. (super color; pitcher is cracked - tumblers OK)
- 7500 300. 12 3/4" DUGAN PERSIAN GARDEN CHOP PLATE - P. OPAL. (EXTREMELY RARE - SUPER OPAL.; WE SOLD THIS ONE IN 1985; A GREAT ITEM)
- 11000 301. 13" DUGAN PERSIAN GARDEN CHOP PLATE - AMY. (EXTREMELY DESIRABLE WITH EXCELLENT BLUE HIGHLIGHTS - SUPER!)
- 2150 302. 12 3/4" DUGAN PERSIAN GARDEN CHOP PLATE - WHITE (VERY RARE; SUPER COLOR AND IRID.; NICE AND FROSTY)
- 3250 303. 11 1/4" DUGAN GARDEN PATH VARIANT CHOP PLATE - PUR. (VERY RARE; EXCELLENT COLOR AND IRID.; NICE HIGHLIGHTS)
- 1200 304. 10 1/2 - 10 3/4" DUGAN WISHBONE AND SPADES CHOP PLATE - PUR. (RARE; GREAT IRID. AND VERY DESIRABLE)
- 3400 305. 10 1/2" DUGAN FARMYARD 6 RUFFLED BOWL - PUR. (SUPER DESIRABLE; NICE COLOR AND VERY RARE)
- 525 306. 6 1/2" DUGAN WISHBONE AND SPADES PLATE - PUR. (SUPER COLOR; SCARCE)
- 250 307. 6 3/4" Dugan Cherries with Jewelled Heart Exterior Crimped Edge Plate - Pur. (very scarce; nice color)
- 190 308. 8 1/2" Dugan Apple Blossom Twigs Low Ruffled Bowl - Amy. (nice irid.)
- 700 309. DUGAN STRAWBERRY 2 PC. EPERGNE - PUR. (VERY RARE; NICE AVERAGE COLOR)
- 2500 310. DUGAN BUTTERFLY AND TULIP LARGE SQUARE FTD. BOWL - PUR. (VERY RARE; ALWAYS POPULAR WITH EXCELLENT IRID.)
- 175 311. Dugan Double Stem Rose Domed Flared Plate - White (scarce; not a bowl; really frosty)
- 225 312. DUGAN APPLE BLOSSOM TWIG FLAT PLATE - WHITE (VERY SCARCE; REALLY NICE IRID.)
- 475 313. DUGAN FANCIFUL FLAT PLATE - P. OPAL. (VERY SCARCE; NICE IRID. WITH GOOD OPAL.)
- 325 314. DUGAN ROUND UP FLAT PLATE - P. OPAL. (VERY SCARCE; NICE COLOR AND OPAL.)
- 1600 315. DUGAN FIVE HEARTS WHIMSEY DOMED ROSE BOWL - DK. MARI. (EXTREMELY RARE ITEM; I HAVE HEARD OF ONE OTHER; SUPER COLOR AND VERY UNUSUAL)
- 160 316. Dugan Honeycomb Rose Bowl - P. Opal. (very scarce; nice opal.)
- 6500 317. DUGAN ELKS 7 RUFFLED HANDLED NAPPY - PUR. (EXTREMELY RARE NOVELTY; SUPER IRID. AND SELDOM SOLD)
- 2000 318. FENTON 1911 ELKS BPOE ATLANTIC CITY BELL - BLUE (VERY RARE; GREAT DETAIL AND IRID.; VERY NICE)
- 1250 319. FENTON 1914 ELKS BPOE PARKERSBURG PLATE - BLUE (VERY RARE; SUPER IRID. AND VERY POPULAR)
- 450 320. FENTON 1911 ELKS BPOE ATLANTIC CITY ICE CREAM SHAPED BOWL - BLUE (RARE; NICE SATINY FINISH)
- 2700 321. FENTON ILLINOIS SOLDIERS AND SAILORS PLATE - BLUE (VERY RARE; EXCELLENT IRID. AND GREAT COLOR)
- 1800 322. FENTON ILLINOIS SOLDIERS AND SAILORS PLATE - DK. MARI. (VERY RARE; SUPER PINK AND RED HIGHLIGHTS - GREAT!)
- 1100 323. FENTON BUTTERFLY AND BERRY FTD. HATPIN HOLDER - BLUE (EXTREMELY RARE COLOR FOR A VERY RARE ITEM)
- 1550 324. FENTON BUTTERFLY AND BERRY FTD. HATPIN HOLDER - MARI. (VERY RARE NOVELTY; NOT VERY OFTEN SOLD)
- 10,500 325. 10" FENTON LITTLE FLOWERS LARGE RUFFLED BOWL - CHERRY RED (EXTREMELY RARE AND DESIRABLE; SUPER COLOR AND IRID.; ONE OF THE HIGHLIGHTS OF THIS AUCTION!!!)
- 350 326. FENTON STAG AND HOLLY SPATULA FTD. RUFFLED BOWL - RED (SUPER RARE WITH EXCELLENT COLOR AND IRID. - GREAT!)
- 3250 327. FENTON DRAGON AND LOTUS RUFFLED BOWL - CHERRY RED (AN EXCELLENT EXAMPLE OF A VERY POPULAR ITEM - NICE!)
- 2600 328. 9" FENTON CARNIVAL HOLLY RUFFLED BOWL - RED (VERY SCARCE; GREAT COLOR AND IRID.; NICE)
- 4250 329. 9" FENTON ORANGE TREE RUFFLED BOWL - RED (RARE AND DESIRABLE; NICE COLOR AND DETAIL)
- 675 330. FENTON CARNIVAL HOLLY RUFFLED HAT - CHERRY RED (VERY DESIRABLE; SUPER COLOR AND IRID.)
- 155 331. Fenton Persian Medallion 2 Handled Bon Bon - Amberina / Red (rare but cracked)
- 525 332. FENTON ORANGE TREE STANDARD FLARED MUG - RED (RARE; NICE COLOR AND IRID.)
- 750 333. FENTON ORANGE TREE STANDARD FLARED MUG - GREEN (VERY RARE BASE COLOR; A KEY ITEM IN THIS COLOR)
- 300 334. Fenton Orange Tree Standard Flared Mug - Odd Blue / Teal Sides (odd tint; nice color)
- 65 335. Fenton Orange Tree Standard Mug - Amber (very scarce color)
- 35 336. Fenton Orange Tree Standard Flared Mug - Mari.
- 575 337. FENTON ORANGE TREE FLARED SHAVING MUG - ODD LIME GREEN (UNUSUAL BASE GLASS - BRIGHT YELLOW / GREEN TINGE)
- 75 338. Fenton Orange Tree Flared Shaving Mug - Blue (nice color)
- 75 339. 6" Fenton Persian Medallion Tri-Cornered Sauce - Amy. (unusual shape to see in this pattern)
- 1100 340. FENTON LOTUS AND POINSETTIA FTD. RUFFLED SAUCE - REVERSE AMBERINA OPAL. (SUPER DESIRABLE; A GREAT ITEM!)
- 100 341. Fenton Lotus & Poinsettia ftd. Ruffled Sauce - Green (very scarce color - excellent!)
- 95 342. Fenton Lotus & Poinsettia ftd. Ruffled Sauce - Aqua Mari. (scarce; nice base color)
- 75 343. Fenton Lotus & Poinsettia ftd. Ruffled Sauce - Vaseline / Mari. (scarce)
- 195 344. Fenton Two Flowers ftd. Ruffled Sauce - Lime Green (odd tint; very scarce)
- 325 345. FENTON TWO ROW OPEN EDGE 2 SIDED HAT - REVERSE AMBERINA / OPAL. TIPS (VERY RARE; SUPER ITEM IN THIS COLOR; A KEY TO THE COLLECTION)
- 80 346. Fenton Two Row Open Edge Ruffled Hat - Mari. / Vaseline (scarce)
- 55 347. Fenton Two Row Open Edge Hat - Millers Furniture - Mari. (scarce)
- 20 348. 10 1/2" Fenton Rustic Standard Size Swung Vase - Green
- 40 349. 15 3/4" Fenton Rustic Mid-size Swung Vase - Green (scarce; has bruise at base)
- 11000 350. 20" FENTON RUSTIC SWUNG FUNERAL VASE WITH COLLAR BASE - EMERALD GREEN (FANTASTIC COLOR AND IRID.; A SUPER ITEM)



- 700 351. 20 1/4" FENTON RUSTIC SWUNG FUNERAL VASE - BLUE (VERY DESIRABLE; NICE IRID.)
- 600 352. 18 1/4" FENTON RUSTIC SWUNG FUNERAL VASE - WHITE (VERY SCARCE; GETTING TOUGHER TO FIND)
- 115 353. Fenton Butterfly & Berry Swung Vase - Blue (scarce)
- 25 354. Fenton Butterfly & Berry Swung Vase - Mari. (scarce)
- 4000 355. FENTON PEACOCK SUMMER GARDENS VASE - DK. MARI. (SUPER RARE AND UNDERPRICED; NOT OFTEN SOLD)
- 12.50 356. Fenton 3 Diamond & Bows Swung Vase - Blue (chips at base)
- 12.50 357. Fenton 3 Diamond & Bows Swung Vase - Mari. (chip at base)
- 300 358. 6 1/4" FENTON LIONS DEEP ROUND FLARED BOWL - BLUE (SCARCE; VERY NICE COLOR AND IRID.)
- 105 359. 7" Fenton Lions Low Ruffled Bowl - Mari. (scarce)
- 3600 360. 9" FENTON PETER RABBIT FLAT PLATE - BLUE (EXTREMELY DESIRABLE; THE TOUGHEST TO FIND AND THIS IS A NICE ONE!)
- 4150 361. 9" FENTON THISTLE FLAT PLATE - AMY. (ABSOLUTELY FANTASTIC COLOR AND IRID.; SUPER RADIUM TYPE FINISH - VERY RARE)
- 1900 362. 9" FENTON THISTLE FLAT PLATE - AMY. (JUST AS NICE AS ABOVE; THIS ONE DOES HAVE A STAIN IN THE CENTER)
- 1500 363. 9" FENTON AUTUMN ACORN FLAT PLATE - GREEN (EXTREMELY RARE ITEM TO FIND; NICE COLOR AND IRID.)
- 5100 364. 9" FENTON CONCORD GRAPE FLAT PLATE - GREEN (SUPER COLOR AND IRID.; A REAL NICE ONE!)
- 3750 365. 9" FENTON CONCORD GRAPE FLAT PLATE - AMY. (VERY DESIRABLE WITH GREAT IRID.)
- 2300 366. 9" FENTON CONCORD GRAPE FLAT PLATE - DK. MARI. (VERY RARE; REALLY NICE IRID.)
- 5250 367. 9" FENTON ORANGE TREE WITH TRUNK FLAT PLATE - GREEN (EXTREMELY RARE COLOR; NICE RED HIGHLIGHTS)
- 350 368. 9" FENTON ORANGE TREE FLAT PLATE - BLUE (VERY NICE EXAMPLE; GOOD IRID.)
- 205 369. 9" Fenton Orange Tree with Trunk Flat Plate - White (scarce with excellent irid.)
- 115 370. 9" Fenton Orange Tree with Trunk Flat Plate - Dk. Mari. (super color & irid.; has odd tool mark on edge)
- 600 371. 9" FENTON CORAL FLAT PLATE - LT. MARI. (RARE PATTERN; LIGHT COLOR AND IRID.)
- 650 372. 9" FENTON SPECTOR'S DEPT. STORE - HEART AND VINE PLATE - MARI. (VERY SCARCE; NICE COLOR AND IRID.)
- 450 373. 9" Fenton Heart & Vine (Variant) Plate - Blue (great color; odd pattern design - nice)
- 525 374. 9" Fenton Heart & Vine (normal) Plate - Blue (very scarce; nice color & irid.)
- 2150 375. 9" FENTON CARNIVAL FLAT PLATE - GREEN (VERY SCARCE AND DESIRABLE; VERY NICE IRID.)
- 600 376. 9" FENTON CARNIVAL HOLLY FLAT PLATE - AMY. (RARE WITH EXCELLENT COLOR AND IRID.; SUPER)
- 425 377. 9" FENTON LOTUS AND GRAPE FLAT PLATE - BLUE (RARE PATTERN IN A PLATE; FLAT AND NICE)
- 850 378. 9" FENTON CAPTIVE ROSE FLAT PLATE - AMY. (RARE WITH REALLY NICE IRID.; A PRETTY ONE!)
- 750 379. 9" FENTON CAPTIVE ROSE FLAT PLATE - GREEN (RARE WITH NICE COLOR AND IRID.)
- 2200 380. 12" FENTON STAG AND HOLLY FTD. CHOP PLATE - DK. MARI. (SUPER DESIRABLE WITH EXCELLENT BRIGHT IRID.!)
- 1000 381. 10 1/4" FENTON PERSIAN MEDALLION CHOP PLATE - BLUE (RARE; NICE PATTERN IN A BIG SIZE)
- 1050 382. 9" FENTON PEACOCK AT THE URN PLATE - BLUE (VERY SCARCE; STILL POPULAR)
- 650 383. 9" FENTON PEACOCK AT THE URN PLATE - WHITE (VERY SCARCE; NICE FROSTY COLOR AND IRID.)
- 550 384. 9" FENTON PEACOCK AT THE URN PLATE - DK. MARI. (SUPER COLOR AND IRID.; SCARCE)
- 4000 385. 7 1/2" FENTON BLACKBERRY 2 ROW OPEN EDGE PLATE - BLUE (SUPER RARE ITEM; ONE OF THE FIRST WE'VE SOLD!)
- 200 386. 7 1/2" Fenton Horsehead Medallion Plate - Dk. Mari. (scarce; nice dark color & irid.)
- 335 387. 7 1/2" Fenton Peacock & Dahlia Plate - Dk. Mari. (very scarce pattern in this shape - nice)
- 545 388. 7 1/4" Fenton Vintage Grape Plate - Green (super color & irid.; bright finish)
- 350 389. 6 1/2" FENTON LITTLE FLOWERS FLAT PLATE - MARI. (RARE PATTERN; NICE DARK SATINY FINISH)
- 500 390. 6 1/4" FENTON SAILBOATS FLAT PLATE - BLUE (VERY RARE TO FIND IN THIS COLOR; NICE DETAIL)
- 95 391. 6" Fenton Pine Cone Plate - Blue (scarce)
- 85 392. 6" Fenton Pine Cone Plate - Mari.
- 50 393. 7" Fenton Peacock & Dahlia Ice Cream Shaped Bowl - Blue (nice detail)
- 70 394. 7 1/2" Fenton Mirrored Lotus Ruffled Bowl - Blue (scarce pattern)
- 550 395. 9 1/2" FENTON DRAGON AND STRAWBERRY LARGE ICE CREAM SHAPED BOWL - BLUE (VERY RARE; SUPER COLOR AND IRID.; NICE)
- 650 396. Fenton Panther ftd. Ruffled Master Berry Bowl - Blue (excellent color & irid.; tough to find)
- 135 397. Fenton Butterfly & Berry ftd. Ruffled Master Berry Bowl - Amy. (scarce color & irid.)
- 225 398. Fenton Thistle ftd. Banana Boat - Amy. (very scarce; excellent color & irid.)
- 55 399. Fenton Stag & Holly Giant ftd. Rose Bowl - Mari. (nice color but cracked)
- 850 400. 9" FENTON VINTAGE GRAPE 6 RUFFLED BOWL - AQUA OPAL. (VERY RARE COLOR FOR THIS PATTERN; NICE)
- 90 401. 9" FENTON DRAGON AND LOTUS ICE CREAM SHAPED BOWL - P. OPAL. (RARE; ONE OF THE NICER EXAMPLES AROUND)
- 300 402. 8 1/2" Fenton Dragon & Lotus Ice Cream Shaped Bowl - Amber (very scarce color; nice irid.)
- 375 403. 9" FENTON PEACOCK AND GRAPE RUFFLED BOWL - MARI. / MOONSTONE (RARE COLOR; VERY NICE MARI. OVERLAY)
- 110 404. 8 1/2" Fenton Peacock & Grape Ice Cream Shaped Bowl - Elec. Blue (super color on a very popular item)
- 4100 405. FENTON MILADY TANKARD WATER PITCHER - BLUE (VERY RARE AND EXTREMELY DESIRABLE - VERY NICE)
- 1500 406. FENTON FLUFFY PEACOCK 7 PC. WATER SET - GREEN (EXTREMELY RARE TO FIND IN A COMPLETE SET; NICE COLOR)
- 2700 407. FENTON BLACKBERRY BLOCK 7 PC. WATER SET - AMY. (EXTREMELY RARE TO FIND IN A COMPLETE SET; NICE)
- 40 408. Fenton Cherry Circles 2 sided Handled Bon Bon - Mari.
- 409 409. Big Butterfly Hatpin - Dark
- 275 410. FENTON ORANGE TREE FTD. HATPIN HOLDER - GREEN (EXTREMELY RARE; SUPER COLOR; ONE FOOT HAS HAIRLINE)
- 4100 411. FENTON ORANGE TREE FTD. HATPIN HOLDER - BLUE (VERY SCARCE; DESIRABLE)
- 190 412. Fenton Orange Tree Handled Loving Cup - Green (super color & rare; has check at handle)
- 200 413. FENTON ORANGE TREE HANDLED LOVING CUP - BLUE (VERY DESIRABLE ITEM; NICE COLOR AND IRID.)
- 35 414. Fenton Orange Tree Handled Loving Cup - Dk. Mari. (super color; manuf. check in handle)



- 625 415. FENTON MIRRORED LOTUS ROSE BOWL - WHITE (EXTREMELY RARE PATTERN IN A ROSE BOWL; NICE)
- 675 416. FENTON MIRRORED LOTUS ROSE BOWL - MARI. (EXTREMELY RARE COLOR; SUPER!)
- 46 417. Fenton Persian Medallion Rose Bowl - Blue (very scarce)
- 16 418. Fenton Two Flowers Spatula ftd. Rose Bowl - Mari. (scarce shape)
- 37.50 419. Fenton Captive Rose Stemmed Ruffled Compote - Dk. Mari.
- 6750 420. M'BURG MITERED OVALS RUFFLED VASE - AMY. (ABSOLUTELY SUPER ITEM; GREAT COLOR AND EXTREMELY RARE - NOT OFTEN SOLD - A BEAUTY!)
- 2000 421. M'BURG HOBSTAR AND FEATHER GIANT ROSE BOWL - GREEN (VERY RARE AND VERY DESIRABLE; UNDERSIDE STARTED TO BE DRILLED)
- 425 422. 6" M'BURG PEACOCK AT THE URN SMALL PLATE - AMY. (VERY SCARCE; NICE SATINY FINISH)
- 275 423. 9" M'burg Peacock at the Urn "Mystery" Ruffled Bowl - Amy. (very scarce; nice finish)
- 95 424. 9 1/2" M'burg Peacock at the Urn Large Ice Cream Bowl - Amy. (satiny; no beads - has bee, urn painted; 2 small chips on base)
- 1900 425. 6 3/4 - 7" M'BURG BLACKBERRY WREATH FLAT PLATE - MARI. (EXTREMELY RARE LITTLE ITEM; SUPER COLOR!)
- 1700 426. 10" M'BURG BLACKBERRY WREATH LARGE ICE CREAM BOWL - BLUE (SUPER RARE COLOR; VERY DESIRABLE SHAPE)
- 2100 427. 10" M'BURG BERNHEIMER BROS. MANY STARS RUFFLED BOWL - BLUE (EXCELLENT EXAMPLE OF A VERY POPULAR ITEM)
- 270 428. 6" M'BURG ISAAC BENESCH RUFFLED ADVERT. BOWL - AMY. (SCARCE; NICE COLOR AND DETAIL)
- 140 429. M'burg Nesting Swan 6 Ruffled Bowl - Green (satiny finish; has some roughness around edge)
- 1000 430. M'BURG TROUT AND FLY SQUARE BOWL - GREEN (VERY SCARCE SHAPE; GETTING TOUGH; NICE)
- 850 431. M'BURG TROUT AND FLY SQUARE BOWL - MARI. (ANOTHER SCARCE SHAPE ON A POPULAR ITEM)
- 850 432. M'BURG BIG FISH ICE CREAM SHAPED BOWL - AMY. (SUPER COLOR AND DETAIL; NICE IRID.)
- 1250 433. 8 3/4" M'BURG TROUT AND FLY LOW ICE CREAM SHAPED BOWL - GREEN (RADIUM AND SUPER; EXCELLENT DETAIL)
- 400 434. 8 1/2" M'BURG TROUT AND FLY ICE CREAM SHAPED BOWL - GREEN (SUPER SATINY AND HAS EXCELLENT DETAIL)
- 500 435. 8 1/2" M'BURG BIG FISH BOWL WITH 3 IN 1 EDGE - AMY. (SCARCE; NICE COLOR AND DETAIL)
- 575 436. M'BURG TROUT AND FLY 6 RUFFLED BOWL - GREEN (SATINY; NICE)
- 400 437. M'BURG TROUT AND FLY 6 RUFFLED BOWL - AMY. (SATINY; NICE IRID.)
- 400 438. M'BURG TROUT AND FLY 6 RUFFLED BOWL - MARI. (SATINY; NICE COLOR)
- 500 439. 4 7/8" BASE X 8" TALL IMPERIAL ZIPPER LOOP KER- OSENE LAMP - MARI. (SCARCE; NICE COLOR FOR A POPULAR ITEM)
- 1750 440. ROSES AND RUFFLES GONE WITH THE WIND LAMP - BUTTERSCOTCH / MARI. (SUPER ITEM; EXCELLENT COLOR AND IRID.; HAS TINY SPIDER IN TOP GLOBE)
- 650 441. IMPERIAL COLONIAL LADY SQUARE RUFFLED VASE - PUR. (RARE AND A VERY POPULAR ITEM - NICE COLOR)
- 2000 442. IMPERIAL COLONIAL LADY RUFFLED TOP VASE - DK. MARI. (RARE; EXCELLENT COLOR AND IRID.)
- 40 443. Imperial Plain Lustre Standard Swung Vase - Pur. (super irid.)
- 135 444. (2) Imperial Beaded Bullseye Squatty Swung Vase - Pur. (selling choice; excellent irid.)
- 105

- 5100 445. IMPERIAL HOMESTEAD CHOP PLATE - SIGNED NUART - EMERALD GREEN (SUPER RARE WITH GREAT IRID. ON A RARE BASE GLASS)
- 1800 446. IMPERIAL HOMESTEAD CHOP PLATE - SIGNED NUART - SMOKEY AMBER (REALLY ODD TINT; SUPER, SUPER IRID.)
- 1400 447. IMPERIAL CHRYSANTHEMUM CHOP PLATE, NOT SIGNED - PUR. (RARE AND VERY DESIRABLE; REALLY NICE IRID.)
- 85 448. Imperial Flute Toothpick Holder - Pur. (nice color)
- 255 449. 9 1/4" Imperial Embossed Scroll Flat Plate - Pur. (always popular with excellent color & irid.)
- 1600 450. 9" IMPERIAL OPEN ROSE FLAT PLATE - PUR. (ABSOLUTELY SUPER, SUPER COLOR AND IRID.; EXTREMELY RARE!)
- 4500 451. 10 1/4" IMPERIAL HATTIE CHOP PLATE - AMBER - A SUPER ITEM; VERY HARD COLOR TO GET - NICE)
- 350 452. 10 3/4" Imperial Heavy Grape Chop Plate - Mari. w/ Stretch Effect (very scarce; nice color)
- 100 453. 10" Imperial Acanthus Chop Plate - Mari. (nice irid.)
- 800 454. IMPERIAL POPPY SHOW LARGE BULBOUS VASE - DK. MARI. (VERY SCARCE; EXCELLENT IRID.)
- 700 455. FENTON DAISY SQUARES PEDESTALED 2 SIDED CRIMPED EDGE COMPOTE - LIME GREEN / MARI. (RARE; ODD SHAPE AND NICE COLOR)
- 275 456. Westmoreland Carolina Dogwood 6 Ruffled Bowl - Blue Opal. (very scarce and very desirable)
- 225 457. Westmoreland Daisy Wreath 6 Ruffled Bowl - Dk. Mari. / Milk Glass (super irid.; very scarce item)
- 5 458. Fenton Three Row Open Edge Ice Cream Shaped Bowl - White (badly cracked)
- 35 459. (2) Dugan Target Swung Vases - Mari. (selling the pair)
- 5 460. Odd Ribbed Vase and Crackle Plate - Lt. Mari.

#### New Glass

1. 1977 Gibson Crackle Effect 7 pc. Bulbous Water Set - Green (unusual set)
2. Gibson Blown Figural Owl Vase - Cobalt Blue (odd item)
3. Fenton Chessie Cat Stemmed Covered Candy Dish - Pur. (rare; earlier item; very desirable)
4. (2) 1981 HOACGA Candlelamps with Brackets - Red (selling choice; always popular)
5. 1982 ICGA Frolicking Bears Ruffled Spittoon - Red (scarce)
6. Fenton 2 Row Open Edge Ruffled Hat - Red
7. 1982 Fenton Encore Kittens Handled Ruffled Basket - Red
8. 1980 Figural Elephant, signed P - H - Blue (very unusual item, as are the rest)
9. 1980 Figural Elephant, signed P - H - Pink
10. 1981 Figural Elephant, signed P - H - Pur.
11. 1981 Figural Elephant, signed P - H - Red
12. 1981 Figural Elephant, signed P - H - White
13. 1982 Figural Elephant, signed P - H - Green
14. Fenton Hobnail Ruffled Vase - Pur.
15. IG Octagon Cruet and Stopper - Pur. (scarce)
16. 1976 Iwo Jima Centennial Paperweight, Holly City Bottle Co. - Pur. (odd item)
17. IG Storybook Mug - Azure Blue
18. New Child's Mug with Dogs - Lt. Amber
19. Westmoreland Panelled Grape 7 pc. Child's Water Set - Pur.
20. Fenton Daisy ftd. Fernery - Pur.
21. Figural Sitting Cat - Pur.
22. Figural Sitting Cat - Pur.
23. IG Pastel Swan - Azure Blue
24. Fenton European Daisy and Button Handled Basket - Pur.
25. (2) Joe St. Clair Centennial Toothpicks - Blue



