

AUCTION SERVICE

1993 Keystone Convention Auction

Friday & Saturday, May 28 & 29, 1993

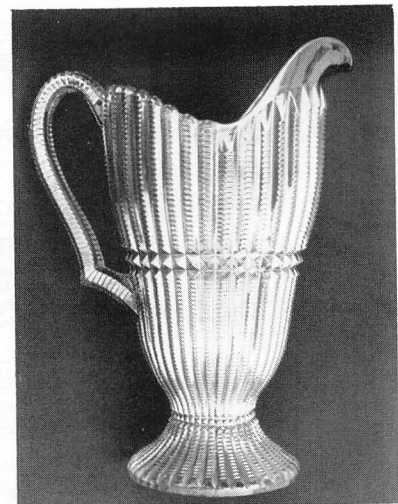
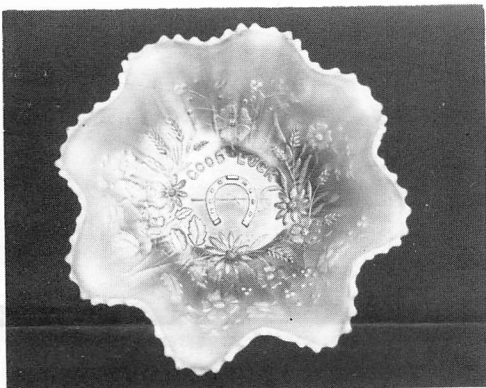
6:00 pm, Friday Lots 1 - 90, 4:00 pm preview

10:00 am, Saturday Lots 91 - end, 9:00 am preview

at the **Days Inn**

Rte. 36, Brookville, Pa. (Exit 13 off I-80)

(814) 849-8001



Burns Auction Service

Tom Burns
109 E. Steuben St.
Bath, New York 14810
(607) 776-7942

Bill Richards
44 Water St.
Poland, Ohio 44514
(216) 757-2001

Bill Richards III
524 Poland Ave.
Struthers, Ohio 44471
(216) 755-2620

Once again we have the pleasure to present you the annual Keystone Convention Auction. This year we are selling, at auction, a small part of the Lamar Sharp collection from Lititz, Pa. Mary and David have put together a nice selection of glass that Lamar spent a lot of time acquiring. This is a nice selection with a bit of something for everyone! Hope to see you there!

The auction will be held in conjunction with the 1993 Keystone Convention which will be held at the Days Inn in Brookville, Pa. The motel is located just off I-80 and is a popular place because of its reasonable rates and nice facilities, as well as its convenient location. You may call the motel direct at (814) 849 - 8001 for your reservations or call Denny Keck at (814) 938 - 3472. It's sure to be a fun time, as always! Be sure to make it!

Mail Bids due by Thursday, May 27, 1993.

Mail Bids honored under the following conditions:

1. No deposit required. Bidders will take full responsibility to honor any and all bids we execute for them. Payment in full plus postage and handling required after notification and before we ship any item to them.
2. Items are bid on in perfect condition with average or above average iridescence OR as listed in the brochures. Bids will not be carried out when damage on an item has been found during the auction.
3. Successful bidders will be notified by collect call from the auctioneer (so be sure to include phone number).
4. Phone inquiries about the glass or any other questions are welcome.
5. All non-successful will receive a result summary in the mail. Results of all bids will be provided.
6. If you have some other person at the auction bidding for you, they must pay for the item before taking it.
7. Mail bids due by Thursday, May 27, 1993

- | | |
|---|--|
| ___ 1. N Raspberry Stemmed Ruffled Compote - Pur. | ___ 18. 9" N G & C Plate - Pastel Mari. (scarce; nice irid.) |
| ___ 2. N Peacock at the Fountain Tumbler - Elec. Blue (scarce; nice color) | ___ 19. 9" N G & C Plate - Mari. |
| ___ 3. N Peacock at the Fountain Tumbler - Mari. | ___ 20. N G & C TUMBLER - LIME ICE GREEN (EXTREMELY RARE; ODD TINT; SUPER COLOR AND IRID.) |
| ___ 4. 10" N Tree Trunk Swung Vase - Standard Size - Elec. Blue (very scarce; nice color) | ___ 21. N G & C Tumbler - Green |
| ___ 5. N Fine Cut and Roses ftd. Rose Bowl - Green (very scarce; good feet) | <u>250</u> ___ 22. N THREE FRUITS STIPPLED FTD. RUFFLED BOWL WITH MEANDER EXTERIOR - ICE GREEN (VERY RARE; NICE IRID.; REALLY TOUGH!) |
| ___ 6. N Fine Cut and Roses ftd. Ruffled Candy Dish - Horehound (very scarce color; unusual) | ___ 23. N THREE FRUITS STIPPLED FTD. RUFFLED BOWL WITH MEANDER EXTERIOR - WHITE (VERY RARE COLOR; NICE IRID.) |
| ___ 7. 7" N Tree Trunk Squatty Vase - Pur. (scarce size; nice) | ___ 24. N Three Fruits Stippled ftd. Ruffled Bowl with Meander Exterior - Blue (rare with nice irid.; tough item) |
| ___ 8. N Three Fruits Bowl with Pie Crust Edge - Pur. (scarce) | ___ 25. N PEACOCK AT THE URN LARGE ICE CREAM BOWL - ELEC. BLUE (VERY RARE ITEM; NICE COLOR; SMALL CHIP NEAR TAIL) |
| ___ 9. N Three Fruits Plate - Pur. (scarce; nice color) | ___ 26. N Greek Key Ruffled Bowl - Blue (very scarce; silvery irid. with a touch of gold) |
| <u>2000</u> ___ 10. N RASPBERRY MILK PITCHER - LIME ICE GREEN (EXTREMELY RARE; EXCELLENT COLOR AND IRID.; SMALL FLAKE ON EDGE OF BASE) | ___ 27. N Singing Bird Mug - Blue (scarce; nice color) |
| ___ 11. 9" N G & C Bowl with Pie Crust Edge - Pur. | ___ 28. N Singing Bird Mug - Lavender (odd tint nice irid.) |
| ___ 12. N G & C Covered Butter Dish - Pur. (very scarce; super color and irid.) | ___ 29. N Singing Bird Stippled Mug - Mari. (scarce item; nice) |
| ___ 13. N G & C PERFUME BOTTLE AND STOPPER - PUR. (VERY RARE; PERFECT WITH GOLD IRID.) | ___ 30. N PEACOCKS RUFFLED BOWL WITH RIBBED EXTERIOR - AQUA OPAL. (RARE AND DESIRABLE; OPAL. ON EDGE; VERY NICE ITEM!) |
| ___ 14. N G & C BANDED FTD. HATPIN HOLDER - AMY. (RARE VARIATION; NICE COLOR AND IRID.) | ___ 31. N PEACOCKS BOWL WITH PIE CRUST EDGE AND RIBBED EXTERIOR - ELEC. BLUE (SUPER COLOR; VERY DESIRABLE ITEM; NICE) |
| ___ 15. N G & C MID-SIZE PUNCH BOWL AND BASE - ICE BLUE TOP - WHITE BASE (TOP DAMAGED; BASE PERFECT; WHAT A SHELF PIECE!) | <u>425</u> ___ 32. N PEACOCKS BOWL WITH PIE CRUST EDGE AND RIBBED EXTERIOR - PUR. (VERY SCARCE ITEM; NICE COLOR AND IRID.) |
| ___ 16. 9" N G & C Plate with Basketweave Exterior - Green (very scarce; nice color and irid.) | |
| ___ 17. 9" N G & C Plate - Pur. (scarce) | |

700 33. **N PEACOCKS PLATE WITH RIBBED EXTERIOR - ELEC. BLUE (RARE WITH EXCELLENT HIGHLIGHTS - A NICE ITEM)**

1000 34. **N PEACOCKS PLATE WITH RIBBED EXTERIOR - LAVENDER (ODD. AMY. TINT WITH SUPER IRID.)**

35. **N PEACOCK AT THE FOUNTAIN FTD. FRUIT BOWL - PUR. (VERY SCARCE; NICE COLOR FOR A POPULAR ITEM)**

36. **N ROSE SHOW RUFFLED BOWL - GREEN (EXTREMELY RARE COLOR IN A VERY POPULAR ITEM)**

1300 37. **N ROSE SHOW PLATE - ELEC. BLUE (RARE ITEM WITH SUPER DETAIL)**

38. **N ROSE SHOW PLATE - MARI. (A REALLY NICE ITEM WITH EXCELLENT HIGHLIGHTS)**

39. **N Poppy Ruffled Relish Tray - Pastel Mari.**

2300 40. **N GOOD LUCK RUFFLED BOWL WITH RIBBED EXTERIOR - AQUA OPAL. (SUPER RARE WITH SUPER OPAL. - PERFECT AND NICE)**

41. **N GOOD LUCK BOWL WITH PIE CRUST EDGE AND RIBBED EXTERIOR - ELEC. BLUE (SCARCE WITH SUPER IRID.)**

1100 42. **N GOOD LUCK BOWL WITH BASKETWEAVE EXTERIOR - PUR. (RARE; NICE COLOR ON A POPULAR ITEM)**

43. **N Beaded Cable ftd. Rose Bowl - Elec. Blue (Super color; scarce)**

44. **N Beaded Cable ftd. Rose Bowl - Pur.**

450 45. **N HEART AND FLOWERS STEMMED COMPOTE - AQUA OPAL. (SUPER; A VERY NICE ITEM WITH GREAT COLOR AND OPAL.)**

46. **N HEART AND FLOWERS STEMMED RUFFLED COMPOTE - PUR. (VERY RARE COLOR - TOUGH TO FIND WITH NICE IRID.)**

47. **N Heart and Flowers Stemmed Ruffled Compote - White (scarce; nice irid.)**

48. **N HEART AND FLOWERS RUFFLED BOWL WITH RIBBED EXTERIOR - SUPER; SCARCE WITH NICE FROSTY IRID.)**

49. **N HEART AND FLOWERS RUFFLED BOWL WITH RIBBED EXTERIOR - BLUE (VERY SCARCE ITEM; A BIT SILVERY)**

500 50. **N ACORN BURR WATER PITCHER - ODD AMY. (VERY ODD ITEM; IT'S IN A TINT I HAVEN'T SEEN)**

51. **N ACORN BURR COVERED BUTTER DISH - PUR. (VERY SCARCE; NICE COLOR AND IRID.)**

52. **N Acorn Burr Covered Sugar Dish - Pur. (very scarce; nice color and irid.)**

53. **N Acorn Burr Creamer - Pur. (Pur. (scarce; nice color))**

54. **N Acorn Burr Spooner - Pur. (scarce; nice color)**

350 55. **13" N Thin Rib Mid Size Vase - Blue (a rare color for this item; nice)**

56. **13" N Thin Rib Mid Size Swung Vase - Pur. (scarce; nice color)**

57. **N Memphis Master Berry Bowl - Mari. (scarce item)**

58. **N Grape and Gothic Arches Master Berry Bowl - Blue (scarce item)**

59. **N Eight Sided Bushel Basket - Mari. (scarce; nice color)**

500 60. **M'BURG BIG FISH BOWL WITH 3 IN 1 EDGE - PASTEL MARI. (RARE; NICE SATINY FINISH AND REALLY NICE DETAIL)**

61. **9" M'BURG PEACOCK AT THE URN "MYSTERY" RUFFLED BOWL - GREEN (VERY RARE; EXCELLENT COLOR AND DETAIL)**

62. **5" M'burg Peacock at the Urn "Proof" Sauce - Amy. (scarce; nice item)**

63. **M'BURG FEATHER AND HEART 7 PC. WATER SET - DK. MARI. (RARE SET WITH NICE DARK COLOR - TOUGH!)**

64. **M'burg Holly Sprig Handled Bon Bon with Isaac Benesch Adv. - Mari. (scarce)**

600 65. **CAMBRIDGE COLOGNE BOTTLE AND STOPPER - GREEN (EXTREMELY RARE; GREAT COLOR AND COMPLETE!)**

66. **Dugan Daisy and Plume 3 ftd. Oval Ruffled Bowl - P. Opal. (very scarce item)**

67. **6" Dugan Flowers and Beads Exterior Plate - P. Opal. (scarce item)**

68. **6" Dugan Petal and Fan Crimped Edge Plate - Pur. (very scarce; nice)**

69. **6" Dugan Petal and Fan Crimped Edge Plate - P. Opal. (very scarce)**

400 70. **6" DUGAN SKI STAR CRIMPED EDGE PLATE - P. OPAL. (RARE; SUPER OPAL. AND NICE IRID.)**

71. **Dugan Ski Star Hand Grip Domed Plate - P. Opal. (scarce; super opal.)**

72. **Dugan Ski Star Domed Ruffled Banana Dish - P. Opal. (scarce; odd shape)**

73. **7" Dugan Single Flower Crimped Edge Plate - P. Opal. (scarce)**

74. **6" Dugan Fishscale and Beads Crimped Edge Plate - P. Opal. (scarce)**

475 75. **10" DUGAN PERSIAN GARDEN LARGE ICE CREAM BOWL - PUR. (VERY SCARCE AND DESIRABLE ITEM - NOT TOO MANY SOLD)**

76. **10" DUGAN PERSIAN GARDEN LARGE RUFFLED BOWL - P. OPAL. (VERY SCARCE; NICE COLOR AND OPAL.)**

77. **DUGAN HONEYCOMB ROSE BOWL - P. OPAL. (VERY SCARCE; NICE OPAL. AND SATINY FINISH)**

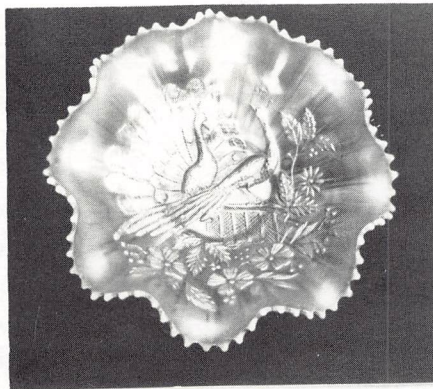
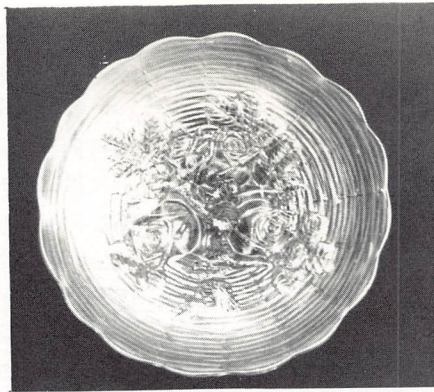
205 78. **6" Dugan Grapevine Lattice Plate - Pur. (rare; nice color and irid.)**

79. **6" Dugan Cherry / Jewelled Heart Exterior Crimped Plate - Pur. (very scarce; nice color and detail)**

- 300 80. **DUGAN BUTTERFLY AND TULIP LARGE ROUND FTD. BOWL - AMY. (RARE ITEM; NICE COLOR AND DETAIL)**
- ___ 81. Dugan Butterfly and Tulip Large Flared Bowl - Mari. (very scarce; nice dark color)
- ___ 82. Nautilus Novelty Sugar - Pur. (scarce; nice color)
- ___ 83. Nautilus Novelty Creamer - P. Opal. (very scarce; nice color and opal.)
- ___ 84. 6" Dugan Fishscale and Beads Low Ruffled Bowl - Pur. (enamelled - Souvenir Deer Isle, Maine)
- 120 85. **DUGAN STORK AND RUSHES WITH LATTICE BAND MUG - AMY. (SCARCE COLOR TO FIND)**
- ___ 86. Dugan Vintage Stemmed Wine Glass - Amy.
- ___ 87. 10" Dugan Panelled Swung Vase (Target Blank) - P. Opal.
- ___ 88. Dugan Thin Rib Squatty Flared Vase - P. Opal.
- ___ 89. Dugan Stippled Petals Domed Banana Bowl - P. Opal.
- 185 90. **9" DUGAN FANCIFUL FLAT PLATE - WHITE (VERY SCARCE; SUPER IRID.)**
- ___ 91. 6" Dugan Grapevine Lattice Low Ruffled Bowl - White (nice irid.)
- ___ 92. Dugan Six Petals Tri-Cornered Bowl - Pur. (scarce shape; nice irid.)
- ___ 93. Dugan Six Petals Tri-Cornered Bowl - P. Opal.
- ___ 94. Dugan Single Flower Tri-Cornered Crimped Edge Bowl - P. Opal.
- 220 95. **DUGAN PEACOCK TAIL VARIANT STEMMED RUFFLED COMPOTE - PUR. (RARE PATTERN; NICE COLOR AND IRID.)**
- ___ 96. Dugan Dogwood Spray Deep Ruffled Compote Vase - Pur. (odd shape; very scarce and nice)
- ___ 97. 9" Dugan Apple Blossom Twig Ruffled Bowl - Pur. (nice color and irid.)
- ___ 98. 9" Dugan Apple Blossom Twig Ruffled Bowl - P. Opal. (scarce; nice opal.)
- ___ 99. 10" Dugan Petal and Fan Ruffled Master Berry Bowl with Jewelled Heart Exterior - P. Opal.
- 180 100. **9" DUGAN WINDFLOWER PLATE - BLUE (RARE WITH NICE IRID.; TOUGH TO FIND)**
- ___ 101. Imperial 474 Stemmed Goblet - Mari. (scarce)
- ___ 102. 6" Imperial Star and File Card Tray - Mari.
- ___ 103. Imperial Plain Panelled Candlestick - Smoke
- ___ 104. Imperial Daisy Handled Flower Basket - Smoke (very scarce item; really nice)
- 750 105. **9" IMPERIAL SAND AND SHELL FLAT PLATE - SMOKE (RARE ITEM; FLAT WITH SUPER IRID.)**
- ___ 106. Imperial Shell and Sand Ruffled Bowl - Pur. (Super irid.)
- ___ 107. **9" IMPERIAL OPEN ROSE FLAT PLATE - AMBER (VERY SCARCE WITH SUPER IRID.)**
- ___ 108. 12" Imperial Ripple Swung Vase - Amber (scarce color)
- ___ 109. 12 1/2" Imperial Ripple Swung Vase - Pur. (super irid.)
- 1250 110. **IMPERIAL FILE WATER PITCHER - DK. MARI. (VERY RARE ITEM AND A VERY RARE PATTERN)**
- ___ 111. **IMPERIAL FILE TUMBLER - DK. MARI. (VERY RARE ITEM; SUPER COLOR)**
- 450 112. **IMPERIAL GRAPE WATER PITCHER - PUR. (VERY SCARCE; SUPER IRID. AND HIGHLIGHTS)**
- ___ 113. **IMPERIAL DIAMOND AND SUNBURST STEMMED WINE DECANter AND STOPPER - PUR. (VERY SCARCE ITEM AND NICE)**
- ___ 114. Imperial Diamond and Sunburst Stemmed Wine Glass - Pur. (nice color)
- 1250 115. **IMPERIAL BROKEN ARCHES PUNCH BOWL AND BASE - PUR. (VERY RARE; SUPER MULTI-COLORED IRID.)**
- ___ 116. **10" IMPERIAL HEAVY GRAPE CHOP PLATE - PUR. (VERY SCARCE; SUPER IRID.; A NICE ITEM)**
- 300 117. **10" IMPERIAL HEAVY GRAPE CHOP PLATE - AMBER (VERY SCARCE; VERY NICE IRID.)**
- ___ 118. 8" Imperial Star Medallion Plate - Clam.
- ___ 119. Imperial Waffle Block Handled Flower Basket - Clam.
- 450 120. **IMPERIAL FASHION WATER PITCHER - PUR. (VERY RARE ITEM; SILVERY / GOLD IRID.; FROM THE PRESNICK COLLECTION)**
- 275 121. **IMPERIAL FASHION ROSE BOWL - MARI. (VERY SCARCE WITH NICE COLOR AND IRID.)**
- ___ 122. 9" Imperial Grape Low Ruffled Bowl - Pur. (super color and irid.)
- ___ 123. 8" Imperial Embossed Scroll Ruffled Bowl - Aqua / Green (odd tint; scarce)
- ___ 124. Imperial Smooth Rays Rose Bowl with Iron Cross - Clear / Clam.
- 475 125. **IMPERIAL FIELDFLOWER TUMBLER - VIOLET BLUE (RARE COLOR - TOUGH TO FIND)**
- ___ 126. Jenkins Daisy and Diamond Cut Creamer - Mari. (scarce)
- ___ 127. Pastel Panels Stretch Tumbler - Ice Green (scarce)
- ___ 128. Fenton Orange Tree Breakfast Sugar - Amy. (scarce color)
- ___ 129. Fenton Blackberry Block Tumbler - Blue (very scarce item)
- 675 130. **11" FENTON FINE RIB SWUNG VASE - RED (SUPER DESIRABLE ITEM; NICE COLOR AND IRID.)**
- ___ 131. 9" Fenton Fine Rib Swung Vase - Amy. (very scarce color)
- ___ 132. 10" Fenton Fine Rib Swung Vase - Smokey Blue (odd tint)

- ___ 133. 10" Fenton Fine Rib Swung Vase - Green (nice!
very scarce color)
- ___ 134. 10" Fenton Fine Rib Swung Vase - Teal (odd tint;
scarce)
- ___ 135. 12" Fenton Fine Rib Swung Vase - Mari. / Vaseline
(nice color)
- ___ 136. 16" Fenton Fine Rib Swung Vase - Blue
- ___ 137. 11" Fenton Fine Rib Swung Vase - Mari.
- ___ 138. 9" Fenton Three Fruits 12 Sided Plate - Blue (very
scarce; nice color)
- 325 140. **FENTON PLUME PANELS SWUNG VASE - TEAL
(RARE COLOR; ODD TINT; REALLY NICE)**
- ___ 141. Fenton Four Pillar Vase with Howard Furniture Adv.
- Green (very scarce; underpriced)
- 325 142. **FENTON BLACKBERRY SPRAY JACK IN THE
PULPIT CRIMPED EDGE HAT - RED (SUPER
SCARCE; GREAT COLOR AND SHAPE)**
- ___ 143. Fenton Blackberry Spray 2 Sided Hat - Teal (odd
tint; scarce)
- ___ 144. Fenton Blackberry Spray 2 Sided Hat - Vaseline /
Mari. (scarce)
- 350 145. **9" FENTON HOLLY 8 RUFFLED BOWL - MARI. /
MILKGLASS (RARE WITH GREAT BASE GLASS
COLOR; A BIT SPOTTY)**
- 500 146. **FENTON HOLLY 6 RUFFLED HAT - RED (RARE;
NICE COLOR AND IRID.)**
- ___ 147. Fenton Holly 6 Ruffled Hat - Teal (odd tint)
- ___ 148. 8 1/2" Fenton Holly 6 Ruffled Bowl - White (nice irid.)
- ___ 149. Fenton Captive Rose Stemmed Ruffled Compote -
White (very scarce; really nice irid.)
- 725 150. **1910 DETROIT ELKS ROUND BOWL - GREEN
(VERY RARE AND DESIRABLE; NICE SHAPE
AND IRID.)**
- 180 151. **7 1/2" FENTON VINTAGE GRAPE PLATE -
GREEN (VERY SCARCE; NICE COLOR AND
IRID.)**
- 140 152. **7 1/2" FENTON VINTAGE GRAPE PLATE - BLUE
(VERY SCARCE; NICE COLOR AND IRID.)**
- ___ 153. 7 1/2" Fenton Vintage Grape Plate - Mari. (very
scarce color)
- ___ 154. **9" FENTON LEAF CHAIN PLATE - WHITE
(SCARCE; NICE IRID. AND VERY DESIRABLE)**
- ___ 155. **FENTON BUTTERFLY AND BERRY LARGE
MASTER BERRY BOWL - WHITE (VERY RARE
ITEM; NOT TOO MANY SOLD)**
- ___ 156. 10" Fenton Butterfly and Berry Swung Vase - Blue
- 65 157. Fenton Sailboat Stemmed Wine Glass - Blue
(scarce color)
- ___ 158. **FENTON HORSEHEAD MEDALLION FTD. ROSE
BOWL - SMOKEY BLUE (AN ODD TINT FOR A
SCARCE ITEM; A BIT SILVERY)**
- ___ 159. Fenton Horsehead Medallion Jack in the Pulpit ftd.
Bowl - Mari.

- 400 160. **FENTON DOUBLE DAISY WATER PITCHER AND
2 TUMBLERS - MARI. (VERY SCARCE ITEM;
GREAT COLOR AND IRID.)**
- ___ 161. Fenton Crocus Variant 7 pc. Enamelled Water Set -
Ice Green (very scarce; nice color)
- ___ 162. 7" Fenton Peacock and Dahlia Ruffled Bowl - Aqua
(scarce color)
- ___ 163. Fenton Peacock at the Urn Stemmed Flared
Compote - Smokey Blue (scarce)
- ___ 164. 9" Fenton Peacock at the Urn Ruffled Bowl - Blue
(super color)
- 650 165. **FENTON MIKADO LARGE STEMMED ROUND
COMPOTE - BLUE (RARE ITEM; VERY NICE
COLOR AND IRID.)**
- ___ 166. Fenton Two Flowers Spatula ftd. Rose Bowl - Blue
(very scarce color for this item)
- ___ 167. Fenton Two Flowers Spatula ftd. Rose Bowl - Mari.
(very scarce)
- ___ 168. 10" Fenton Two Flowers ftd. Ruffled Bowl - Mari.
- 125 169. **FENTON FLOWERS FTD. ROSE BOWL - AMY.
(VERY SCARCE COLOR - HAS AMBER TINT)**
- 1025 170. **8" FENTON G & C ICE CREAM SHAPED BOWL -
RED (RARE; DEEP RED AND VERY DESIRABLE)**
- ___ 171. Fenton Stag and Holly Spatula ftd. Ruffled Bowl -
Amy. (scarce color; nice)
- 225 172. **FENTON PEACOCK AND GRAPE SPATULA FTD.
PLATE - MARI. (VERY SCARCE ITEM)**
- ___ 173. Fenton Strawberry 2 Handled Bon Bon - Mari. /
Vaseline (scarce color)
- ___ 174. 7" Fenton Acorn Ruffled Bowl - Amber (scarce color)
- ___ 175. 7" Fenton Acorn Ruffled Bowl - Smokey Blue (odd
tint)
- ___ 176. 6" Fenton Persian Medallion Plate - Mari.
- ___ 177. Westmoreland Pearly Dots Low Ice Cream Shaped
Bowl - Aqua
- ___ 178. Westmoreland Louisa ftd. Rose Bowl - Aqua
- ___ 179. Westmoreland Louisa ftd. Flared Plate - Mari.
(scarce shape)
- ___ 180. Beaded Purse - Dark



Burns Auction Service
 109 E. Steuben St.
 Bath, N.Y. 14810

First Class
 U.S. Postage
PAID
 Permit #7
 Hammondsport, NY

