



AUCTION SERVICE

H.O.A.C.G.A. Convention Auction

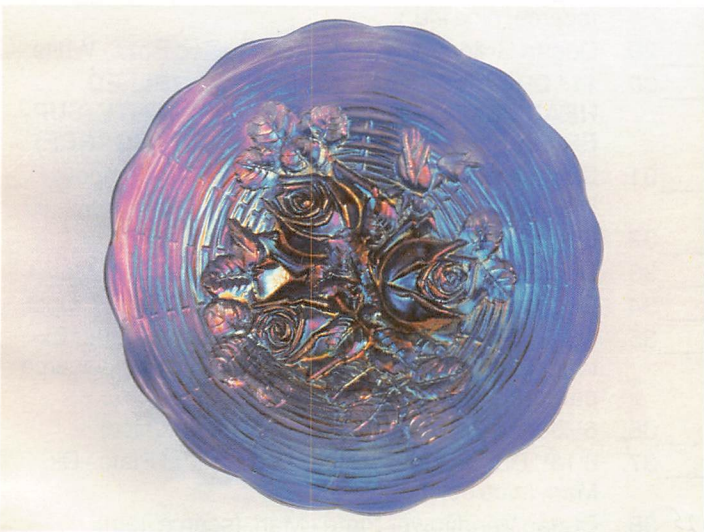
9:30 am, Saturday, April 24, 1993

(preview Friday evening - 6:00 pm; Saturday - 7:00 am)

at the **Holiday Inn - Lenexa**

I-35 & 95th Street, Lenexa, KS 66215

913-888-6670 or 1-800-527-0582



Burns Auction Service

Tom Burns
109 E. Steuben St.
Bath, New York 14810
(607) 776-7942

Bill Richards
44 Water St.
Poland, Ohio 44514
(216) 757-2001

Bill Richards III
524 Poland Ave.
Struthers, Ohio 44471
(216) 755-2620

We're coming back to the great Midwest! It is with great pleasure that we present this year's H.O.A.C.G.A. Convention Auction. After a few year's absence we will once again feature a nice auction of over 300 pieces to be sold to the highest bidder.

This year's auction will include the collection of Mr. & Mrs. Francis DiFilippo from Delaware. They have put together a nice diversified collection with a few super rarities and a nice selection of miniatures - a little something for everyone. Hope to see ya there!

The Holiday Inn - Lenexa, KS will host the event. It's a beautiful facility located right off I-35. It's been the home to the H.O.A.C.G.A. convention for the past few years, with this year's running from April 21 - 25. With all the other activities it looks to be a hum-dinger of an affair.

You may call the motel direct for reservations at (913) 888-6670 or 1-800-527-0582, or contact H.O.A.C.G.A. President Robert Grissom, 7900 Crescent, Raytown, MO 64138, (816) 356-5320 or Secretary Ed Kramer, 4305 W. 78th St., Prairie Village, KS 66208, (913) 642-3587. Be sure to make your plans NOW!

Mail bids due by Thursday, April 22, 1993

Mail Bids honored under the following conditions:

1. No deposit required. Bidders will take full responsibility to honor any and all bids we execute for them. Payment in full plus postage and handling required after notification and before we ship any item to them.
2. Items are bid on in perfect condition with average or above average iridescence OR as listed in the brochures. Bids will not be carried out when damage on an item has been found during the auction.
3. Successful bidders will be notified by collect call from the auctioneer (so be sure to include phone number).
4. Phone inquiries about the glass or any other questions are welcome.
5. All non-successful will receive a result summary in the mail. Results of all bids will be provided.
6. If you have some other person at the auction bidding for you, they must pay for the item before taking it.
7. Mail bids due by Thursday April, 22, 1993.

- | | |
|---|--|
| ___ 1. Beaded Purse - Dark | ___ 24. Dugan Question Mark / Georgia Peach Stemmed Bowl Plate - Pur. (scarce; has slightly smoothed base) |
| ___ 2. Beaded Purse - Dark | ___ 25. DUGAN APPLE BLOSSOM TWIG LOW RUFFLED BOWL / PLATE - SMOKEY / LAVENDER (SUPER ODD COLOR WITH GREAT IRID.; REALLY NICE) |
| ___ 3. Beaded Purse - Dark | ___ 26. Dugan Round Up Low Ruffled Bowl / Plate - Amy. (scarce) |
| ___ 4. Beaded Purse - Dark | ___ 27. Dugan Apple Blossom Twig Ruffled Plate - Pur. (very scarce; it's a firey amy.) |
| ___ 5. Beaded Flapper Hat - Dark (very unusual) | ___ 28. Dugan Fanciful Low Ruffled Bowl / Plate - White (scarce; nice irid.) |
| ___ 6. Pair Heisey Panelled Candlesticks - Lt. Mari. (scarce) | ___ 29. Dugan Grapevine Lattice Low Ruffled Bowl - White |
| ___ 7. Pair Czech Candlesticks with Engraved Floral Decor. - Mari. (unusual pair) | ___ 30. 11" DUGAN PETAL AND FAN / JEWELLED HEART EXT. 10 RUFFLED BOWL - WHITE (SUPER COLOR AND GREAT IRID.; VERY SCARCE) |
| ___ 8. Fenton Stretch 6 Ruffled Stemmed Compote - Ice Green | ___ 31. Dugan Constellation Stemmed Ruffled Compote - White (scarce; frosty) |
| ___ 9. Pastel Swan - Ice Green | ___ 32. Dugan Spiralex Swung Vase - White |
| ___ 10. DUGAN PASTEL SWAN - P. OPAL. (VERY SCARCE; HAS OPAL. ON HEAD) | ___ 33. Dugan Vintage Grape Covered Powder Jar - Mari. |
| ___ 11. Dugan Grape Delight 6 ftd. Rose Bowl - Blue | ___ 34. Dugan Caroline Tight Crimped Edge Bowl - P. Opal. |
| ___ 12. Dugan Grape Delight 6 ftd. Rose Bowl - White | ___ 35. Dugan Grape Arbor / Inverted Fan and Feather Exterior Large Round ftd. Fruit Bowl - Dk. Mari. (scarce pattern) |
| ___ 13. Dugan Leaf Ray Handled Nappy - White | ___ 36. 6" Dugan Persian Garden Plate - Mari. (nice) |
| ___ 14. Dugan Leaf Ray Ruffled Handled Nappy - Pur. | ___ 37. 6 1/2" Dugan Fishscale and Beads Flat Plate - Dk. Mari. (nice color and irid.) |
| ___ 15. DUGAN PODS AND POSIES 8 RUFFLED BOWL - PUR. (A BEAUTIFUL EXAMPLE; DUGAN AT ITS BEST!) | <u>125</u> ___ 38. Dugan Windflower Plate - Mari. (scarce item) |
| ___ 16. Dugan Puzzle Handled Stemmed Bon Bon - Pur. (super color and irid.) | ___ 39. Dugan Windflower Ruffled Bowl - Lt. Amy. |
| ___ 17. Dugan Panelled Cherries 3 ftd. Ruffled Bowl - P. Opal. | <u>3450</u> ___ 40. N ROSE SHOW PLATE - ELEC. BLUE (SUPER, SUPER COLOR AND BRIGHT IRID.; NICE) |
| ___ 18. Dugan Panelled Cherries 3 ftd. Ruffled Bowl - Pur. | ___ 41. N ROSE SHOW RUFFLED BOWL - ELEC. BLUE (RARE AND VERY DESIRABLE; TOUGH TO FIND IN A BOWL) |
| ___ 19. Dugan Windflower Handled Nappy - Ice Green (has stretch effect; chipped a bit around the edge) | |
| <u>600</u> ___ 20. DUGAN MANY FRUITS 8 PC. ROUND PUNCH SET - PUR. (VERY DESIRABLE SET WITH NICE IRID.) | |
| ___ 21. Dugan Maple Leaf 7 pc. Water Set - Pur. (scarce item; some manuf. chiggers) | |
| ___ 22. Dugan Fishermans Mug - Pur. | |
| ___ 23. Dugan Vintage Domed Ruffled Bowl - Celeste Blue (super but cracked) | |

- 1150 42. N ROSE SHOW RUFFLED BOWL - AQUA OPAL. (VERY DESIRABLE; SUPER IRID. AND HAS NICE PASTEL FINISH)
43. N ROSE SHOW RUFFLED BOWL - AQUA OPAL. (DESIRABLE; NICE MARI. OVERLAY, TOUCH OF BUTTERSCOTCH)
44. N POPPY SHOW PLATE - ICE BLUE (RARE AND DESIRABLE; HAS SOME MINOR CHIPS ON EDGE)
- 1300 45. N POPPY SHOW PLATE - DK. MARI. (VERY SCARCE AND IS A NICE IRIDIZED ITEM)
46. N POPPY SHOW RUFFLED BOWL - PUR. (VERY SCARCE; GREAT COLOR AND IRID.)
47. (2) N Wide Panel Epergne side Lilies - Ice Blue (tough if ya need them; sold per each)
- 475 48. N WISHBONE 2 PC. EPERGNE - PUR. (VERY SCARCE; NICE ITEM; GOOD DETAIL)
49. 10" N WISHBONE BOWL WITH PIE CRUST EDGE AND BASKETWEAVE EXTERIOR - WHITE (VERY RARE COLOR FOR THIS ITEM)
- 3000 50. N PEACOCKS BOWL WITH PIE CRUST EDGE AND RIBBED EXTERIOR - ICE GREEN (EXTREMELY DESIRABLE; SUPER COLOR AND IRID.; NICE)
- 3000 51. N PEACOCKS BOWL WITH PIE CRUST EDGE AND RIBBED EXTERIOR - ICE BLUE (RARE AND VERY DESIRABLE; GREAT PASTEL IRID.; SUPER)
52. N PEACOCKS PLATE WITH BASKETWEAVE EXTERIOR - WHITE (VERY RARE WITH THIS EXTERIOR; NICE COLOR)
53. N PEACOCKS PLATE WITH RIBBED EXTERIOR - ICE GREEN (SCARCE WITH EXCELLENT COLOR AND IRID.; SUPER EXAMPLE)
54. N PEACOCKS RUFFLED BOWL WITH RIBBED EXTERIOR - ELEC. BLUE (SUPER COLOR AND SUPER IRID.; GREAT ITEM)
55. N PEACOCKS RUFFLED BOWL WITH RIBBED EXTERIOR - PERSIAN BLUE (VERY RARE; HAS ODD TINT AND TEXTURE; SUPER)
- 1350 56. N PEACOCKS RUFFLED BOWL WITH RIBBED EXTERIOR - BLUE OPAL. (EXTREMELY RARE COLORED TINT; SUPER DESIRABLE)
57. N PEACOCKS RUFFLED BOWL WITH RIBBED EXTERIOR - PUR. (SCARCE; NICE IRID.)
- 1250 58. N PEACOCK AT THE FOUNTAIN 7 PC. WATER SET - ICE BLUE (VERY RARE SET; PITCHER HAS SLIGHT ROUGHNESS ON TOP EDGE; SUPER COLOR)
- 800 59. N PEACOCK AT THE FOUNTAIN STEMMED RUFFLED COMPOTE - AMY. (VERY DESIRABLE; NICE COLOR AND IRID.; TOUGH!)
- 2700 60. N DRAPERY ROSE BOWL - RENNINGER BLUE (FANTASTIC ITEM IN A COLOR I'VE NEVER SEEN IN THIS PATTERN; A VERY DESIRABLE ITEM!)
61. N Beaded Cable ftd. Rose Bowl with Ribbed Exterior - Green
62. N Butterfly Handled Bon Bon with Plain Exterior - Pur.
- 1400 63. N GRAPE ARBOR RUFFLED HAT FROM TUMBLER - ELEC. BLUE (VERY SCARCE; SUPER COLOR AND BLUE HIGHLIGHTS)
64. N Double Loop Chalice - Elec. Blue (very scarce; super color)
- 4000 65. N GOOD LUCK RUFFLED BOWL WITH RIBBED EXTERIOR - AQUA OPAL. (FANTASTIC ITEM; SUPER PASTEL - NICE OPAL. AND SUPER IRID.)
66. N GOOD LUCK RUFFLED BOWL WITH RIBBED EXTERIOR - BLUE (VERY SCARCE)
67. N GOOD LUCK RUFFLED BOWL WITH BASKETWEAVE EXTERIOR - AMY. (VERY SCARCE)
68. N GOOD LUCK PLATE WITH BASKETWEAVE EXTERIOR - GREEN (RARE; ONE OF THE NICER BASKETWEAVE EXAMPLES)
69. N Good Luck Stippled Bowl with Pie Crust Edge and Ribbed Exterior - Pastel Mari. (rare; super pastel with bright highlights)
- 425 70. N LATTICE AND POINSETTIA FTD. RUFFLED BOWL WITH RIBBED EXTERIOR - DK. MARI. (FANTASTIC! SUPER DARK COLOR AND GREAT IRID.)
71. N EIGHT SIDED BUSHEL BASKET - GREEN (SCARCE ITEM WITH GREAT IRID.; VERY NICE)
72. N Round Bushel Basket - Blue (scarce)
73. N Round Bushel Basket - Dk. Mari. (scarce; nice irid.)
74. N Heart and Flowers Stemmed Ruffled Compote - White (scarce; has plain exterior)
75. N HEART AND FLOWERS STEMMED RUFFLED COMPOTE - PASTEL MARI. (VERY SCARCE; ONE OF THE BETTER PATTERNS; NICE)
76. N HEART AND FLOWERS RUFFLED BOWL WITH RIBBED EXTERIOR - ICE GREEN (RARE; NICE MULTI-COLORED IRID.; NICE!)
77. N HEART AND FLOWERS RUFFLED BOWL WITH RIBBED EXTERIOR - ICE BLUE (VERY SCARCE; SUPER COLOR AND IRID.)
78. N HEART AND FLOWERS RUFFLED BOWL WITH RIBBED EXTERIOR - WHITE (SCARCE; NICE COLOR AND IRID.)
79. N EMBROIDERED MUMS RUFFLED BOWL WITH PLAIN EXTERIOR - ICE BLUE (RARE ITEM; AVERAGE COLOR AND IRID.)
- 1050 80. N ORIENTAL POPPY 7 PC. TANKARD WATER SET - PUR. (RARE SET WITH NICE MULTI-COLORED IRID.)
81. N NIPPON BOWL WITH PIE CRUST EDGE AND RIBBED EXTERIOR - ICE BLUE (VERY SCARCE WITH NICE IRID.)
82. N Nippon Bowl with Pie Crust Edge and Ribbed Exterior - White (scarce with Nice irid.)
83. N GRAPE ARBOR TANKARD WATER PITCHER WITH 2 TUMBLERS - PUR. (GREAT COLOR ON A SCARCE ITEM; SELLING TUMBLERS PER CHOICE)
84. N Drapery Tri-Cornered Candy Dish - Pur. (very scarce color)
- 425 85. N MEMPHIS 8 PC. PUNCH SET - DK. MARI. (SCARCE SET; NICE DARK COLOR AND IRID.)

- 1500 86. **N THREE FRUITS STIPPLED PLATE WITH RIBBED EXTERIOR - AQUA WITH OPAL. TIPS (RARE ITEM; NICE PASTEL WITH OPAL. ON THE EDGE)**
87. **N THREE FRUITS STIPPLED PLATE WITH RIBBED EXTERIOR - BLUE (VERY SCARCE; NICE IRID.)**
88. **N THREE FRUITS STIPPLED PLATE WITH RIBBED EXTERIOR - DK. MARI. (NICE DARK EXAMPLE; SCARCE)**
89. **N Three Fruits Ruffled Bowl with Plain Exterior - Emerald Green (super color)**
90. **N THREE FRUITS MEDALLION STIPPLED FTD. RUFFLED BOWL - AQUA OPAL. (VERY NICE EXAMPLE OF A SCARCE ITEM)**
91. **N THREE FRUITS MEDALLION STIPPLED FTD. RUFFLED BOWL - ELEC. BLUE (SUPER COLOR AND SCARCE; HAS PINHEAD)**
92. **N Three Fruits Medallion ftd. Ruffled Bowl - Dk. Pur. (nice color)**
93. **N Fruit and Flowers Handled Stemmed Bon Bon - Elec. Blue (super color; nice)**
94. **N Fruit and Flowers Handled Stemmed Bon Bon - Blue (nice irid.)**
95. **N Three Fruits Plate with Plain Exterior - Pur. (super color and irid.)**
96. **N Three Fruits Ruffled Bowl with Basketweave Exterior - Pur.**
- 1000 97. **N DANDELION 7 PC. TANKARD WATER SET - PUR. (VERY DESIRABLE SET; NICE COLOR AND IRID.)**
98. **N Dandelion Tankard Water Pitcher and Tumbler - Dk. Mari. (scarce item; super color and quality)**
99. **(2) Diamond Point Swung Vases - Amy. (sold per each for pair)**
100. **N G & C STIPPLED BOWL WITH PIE CRUST EDGE AND RIBBED EXTERIOR - ICE BLUE (VERY RARE; NICE RED AND BLUE IRID.)**
101. **7 1/2" N G & C Ruffled Bowl with Basketweave Exterior - Ice Blue (rare item; has epoxied area on base)**
- 200 102. **N G & C STIPPLED PLATE WITH RIBBED EXTERIOR - GREEN (RARE ITEM WITH SUPER COLOR AND EXCELLENT IRID.)**
103. **N G & C Variant Plate with Basketweave Exterior - Dk. Mari. (nice dark color - scarce)**
104. **N G & C Variant Stippled Bowl with Pie Crust Edge and Ribbed Exterior - Blue (very scarce item)**
- 1700 105. **N G & C 14 PC. BANQUET PUNCH SET - PUR. (RARE; SUPER COLOR; A VERY DESIRABLE SET)**
106. **N G & C Variant Plate with Ribbed Exterior - Pur. (scarce item)**
- 355 107. **N G & C BANDED FTD. HATPIN HOLDER - PUR. (RARE VARIATION; TOUGH TO FIND WHEN YOU WANT ONE)**
108. **N G & C ftd. Hatpin Holder - Pur. (very desirable item)**
109. **N G & C Cologne Bottle and Stopper - Pur. (very scarce; stopper has some damage)**
110. **N G & C Perfume Bottle and Stopper - Pur. (scarce item; light, silvery irid.)**
111. **(2) N G & C Cologne Bottles and Stoppers - Dk. Mari. (sold choice; super color and scarce)**
112. **N G & C Large Dresser Tray - Mari. (scarce)**
113. **N G & C FTD. BANANA BOAT - GREEN (SUPER COLOR AND IRID.; SCARCE ITEM)**
114. **N G & C 7 pc. Water Set - Mari. (nice set)**
115. **N G & C 7 pc. Water Set - Pur. (scarce with nice color)**
116. **N G & C Stemmed Sherbet - Amy. (remember the Wishard auction?)**
117. **N Singing Bird Mug - Dk. Mari. (nice color)**
118. **N WILD STRAWBERRY HANDGRIP PLATE - DK. MARI. (SUPER COLOR AND IRID.)**
119. **N DAISY AND DRAPE FTD. FLARED VASE - AQUA OPAL. (RARE; NICE COLOR AND SLIGHT BUTTERSCOTCH IRID.)**
120. **N ACORN BURR 7 PC. WATER SET - PUR. (ALWAYS IN DEMAND - A DESIRABLE SET)**
- 725 121. **N SPRINGTIME 6 PC. WATER SET - DK. MARI. (VERY SCARCE SET TO FIND; A HECK OF A DESIRABLE PATTERN)**
122. **N POPPY RUFFLED RELISH TRAY - WHITE (VERY SCARCE; NICE IRID.)**
123. **N Poppy Ruffled Relish Tray - Green (scarce color; has small chip on edge)**
124. **N POPPY RUFFLED RELISH TRAY - PUR. (A KEY COLOR; TOUGH TO FIND)**
125. **N Poppy Ruffled Relish Tray - Elec. Blue (super color and irid.; scarce)**
126. **N Poppy Ruffled Relish Tray - Blue (nice irid.)**
127. **N Poppy Ruffled Relish Tray - Mari. (scarce)**
128. **N Grape and Gothic Arch Tumbler - Pearlized Custard (nice irid. with pink / blue highlights)**
129. **CAMBRIDGE INVERTED FEATHER COVERED CRACKER JAR - GREEN (ALWAYS DESIRABLE; NICE COLOR)**
- 1000 130. **8 3/4" M'BURG PEACOCK LARGE ICE CREAM BOWL - AMY. (RADIUM; NO BEE, NO BEADING; ALMOST WANTS TO A ROSE BOWL, DIDN'T QUITE MAKE IT; SUPER COLOR AND SIZE)**
131. **M'BURG TROUT AND FLY 6 RUFFLED BOWL - HOREHOUND (SATINY AND A VERY RARE ITEM IN THIS COLOR; MINOR CHIPS AROUND EDGE BUT RARE)**
132. **M'BURG TROUT AND FLY BOWL WITH 3 IN 1 EDGE - GREEN (RADIUM; VERY DESIRABLE)**
133. **M'BURG TROUT AND FLY BOWL WITH 3 IN 1 EDGE - LT. AMY. (SATINY; SUPER SCARCE)**
134. **M'BURG TROUT AND FLY BOWL WITH 3 IN 1 EDGE - AMY. (SCARCE; NICE COLOR)**
- 1075 135. **M'BURG FEATHER AND HEART WATER PITCHER - GREEN (VERY RARE COLOR; VERY UNDERPRICED ITEM)**
136. **M'BURG FEATHER AND HEART 5 PC. WATER SET - MARI. (SCARCE SET; NICE COLOR)**
137. **9" M'burg Blackberry Wreath 6 Ruffled Bowl Amy. - (satiny)**
138. **M'burg Holly Sprig 2 Handled Flat Card Tray - Amy. (radium finish)**
139. **6" M'burg Strawberry Wreath Ruffled Crimped Edge Sauce - Amy. (radium finish; super)**

- 1300 140. M'BURG BERNHEIMER BROTHERS / MANY STARS 6 RUFFLED BOWL - BLUE (SATINY FINISH; EXTREMELY RARE ITEM; NICE COLOR WITH NO WEAR AT ALL)
141. 6" M'BURG ISAAC BENESCH AND SONS ADVERT. RUFFLED BOWL - AMY. (SATINY)
142. M'burg Diamond 5 pc. Water Set - Mari. (very scarce set with nice color)
143. (4) M'burg Marilyn Tumblers - Amy. (very scarce; sold per each)
144. M'BURG MANY STARS (6 POINTED) BOWL WITH RUFFLED CANDY RIBBON EDGE - PASTEL MARI. (SUPER RADIUM; VERY DESIRABLE)
- 1750 145. FENTON BLACKBERRY BLOCK 6 PC. TANKARD WATER SET - AMY. (RARE COLOR TO FIND IN THIS VERY SCARCE SET)
146. FENTON BLACKBERRY BLOCK 4 PC. TANKARD WATER SET - LT. MARI. (VERY SCARCE; LIGHT COLOR BUT A TOUGHIE)
147. Fenton Blackberry 2 Row Open Edge Ruffled Hat - Amy. (scarce color)
148. Fenton 2 Row Jack in the Pulpit Hat - Blue
149. Fenton 2 Row Jack in the Pulpit Hat - Mari.
- 2000 150. FENTON 1911 ATLANTIC CITY ELKS BELL - BLUE (VERY RARE; A SUPER DESIRABLE ITEM THAT ISN'T GETTING ANY EASIER TO FIND)
- 2600 151. FENTON DRAGON AND LOTUS RUFFLED BOWL - RED (SUPER RED COLOR WITH NICE MULTI-COLORED IRID.; RARE)
152. FENTON PANTHER FLAT RUFFLED FTD. SAUCE - RED (RARE ITEM; GREAT IRID.; DARK RED AROUND EDGE)
- 450 153. 13 1/2" FENTON FINE RIB SWUNG VASE - RED (RARE SIZE FOR THIS ITEM; NICE COLOR AND IRID.)
154. FENTON BLACKBERRY SPRAY RUFFLED HAT - RED (VERY SCARCE; NICE COLOR AND IRID.)
155. 7 1/2" FENTON ACORN ICE CREAM SHAPED BOWL - RED (VERY DESIRABLE; HAS FLAT SHAPE; NICE IRID.)
156. 7 1/2" FENTON G & C LOW RUFFLED BOWL - RED (VERY SCARCE; HAS SILVERY / GOLD IRID.)
157. 6 1/2" FENTON STIPPLED RAYS ICE CREAM SHAPED SAUCE - RED (VERY NICE COLOR; GETTING SCARCE)
158. Fenton Peacock and Grape Ruffled Bowl - Red (chip on the outside edge but a nice show piece)
159. Fenton G & C Spatula ftd. Ruffled Bowl - Green
160. FENTON G & C FTD. FRUIT BOWL WITH PERSIAN MEDALLION INTERIOR - AMY. (RARE COLOR; NICE SIZE AND IRID.)
161. FENTON G & C FTD. FRUIT BOWL WITH PERSIAN MEDALLION INTERIOR - GREEN (ANOTHER RARE COLOR; NICE IRID.)
162. Fenton G & C ftd. Fruit Bowl with Persian Medallion Interior - Blue (scarce; nice color)
163. Fenton G & C ftd. Fruit Bowl with Persian Medallion Interior - Mari.

164. John H. Brand - Wilmington, Del. 2 Row Open Edge Advert. Hat - Mari. (nice color)
165. FENTON 3 ROW OPEN EDGE 2 SIDED LARGE SIZE HAT - ICE GREEN (VERY SCARCE; NICE AND FROSTY WITH SUPER IRID.)
166. Feldman Bros. Furniture, Salisbury, Md. 2 Row Open Edge Hat - Lt. Mari. (scarce)
167. Fenton Windmill and Mums Ruffled Bowl - Lt. Amy. (scarce color)
168. Fenton Cherry Chain Large Ice Cream Shaped Bowl - White (very scarce; has super irid.)
169. Fenton Cherry Chain Large Ruffled Bowl - Blue (nice item)
170. FENTON LATTICE AND GRAPE 7 PC. TANKARD WATER SET - BLUE (SCARCE COLOR - A TOUGH SET TO FIND)
171. Fenton Panther Large Ruffled ftd. Master Berry Bowl - Dk. Mari. (super color and irid.; one of the better examples)
172. 9 1/2" Fenton Little Flowers Large Bowl with 3 in 1 Edge - Lt. Amy. (unusual shape and tinge; an interesting item)
173. Fenton Blackberry Bramble Stemmed Ruffled Compote - Amy.
174. Fenton Iris Stemmed Ruffled Compote - Amy.
- 750 175. 7 1/2" FENTON HORSEHEAD MEDALLION PLATE - BLUE (VERY RARE ITEM; HAS MANUF. MARK ON EDGE)
176. 7 1/2" FENTON VINTAGE GRAPE PLATE - AMY. (VERY SCARCE; NICE IRID.)
177. 6 1/2" FENTON LITTLE FLOWERS PLATE - MARI. (VERY SCARCE ITEM; SATINY FINISH)
178. 6 1/2" FENTON SAILBOATS FLAT PLATE - LT. MARI. (LIGHT IN COLOR BUT A TOUGH ITEM TO FIND)
179. 7" Fenton Stippled Rays Plate - Mari.
180. 7" Fenton Persian Medallion Plate - Blue (scarce color)
181. Fenton Persian Medallion Large Stemmed Ruffled Compote - Blue
182. 9 1/2" Fenton Persian Medallion Large Bowl with 3 in 1 Edge - Green (nice item)
- 225 183. FENTON HOLLY FLAT PLATE - DK. MARI. (SUPER COLOR AND IRID.)
184. 8" Fenton Holly Ice Cream Shaped Bowl - Blue
185. FENTON FANTAIL / BUTTERFLY AND BERRY EXTERIOR FTD. CENTERPIECE BOWL - ELEC. BLUE (SUPER; ONE OF THE NICER COLORED FENTON ITEMS)
186. FENTON BUTTERFLY AND BERRY SWUNG VASE - GREEN (VERY SCARCE COLOR FOR THIS ITEM)
187. Fenton Dragon and Lotus Ice Cream Shaped Bowl - Green (nice color)
188. Fenton Dragon and Lotus Ice Cream Shaped Bowl - Lt. Mari.
189. 10 1/2" Fenton Stag and Holly Large Ball ftd. Low Ice Cream Shaped Bowl - Dk. Mari.
- 850 190. FENTON CONCORD GRAPE PLATE - MARI. (VERY RARE ITEM; A TOUGH FENTON PLATE)

- 660
191. **FENTON PEACOCK AND GRAPE PLATE - DK. MARI. (SUPER COLOR; VERY SCARCE)**
192. Fenton Peacock and Grape Ruffled Bowl - Blue
193. Fenton Fluffy Peacock Water Pitcher - Dk. Mari. (very scarce; has a check at top of handle)
194. Fenton Garland ftd. Rose Bowl - Dk. Mari.
195. **FENTON BUTTERFLY AND FERN 7 PC. WATER SET - BLUE (VERY SCARCE SET; ALWAYS A TOUGHIE)**
196. **FENTON BUTTERFLY AND FERN 6 PC. WATER SET - GREEN (ANOTHER TOUGH SET; VERY RARE)**
197. Fenton Orange Tree Orchard Bulbous Water Pitcher - Blue (cracked - nice shelf piece)
198. Fenton Orange Tree ftd. Hatpin Holder - Mari. (scarce)
199. **FENTON ORANGE TREE 8 PC. PUNCH SET - BLUE (NICE SET, NICE COLOR)**
200. **FENTON PETER RABBIT RUFFLED BOWL - DK. MARI. (VERY RARE PATTERN; NICE PINK HIGHLIGHTS)**
201. Fenton Illusion 2 Handled Bon Bon - Mari.
202. Fenton Persian Medallion 2 Handled Bon Bon - Blue
203. Fenton Vintage Grape Bowl with 3 in 1 Edge - Blue
204. Fenton Vintage Grape Bowl with 3 in 1 Edge - Mari.
- 425 205. **FENTON FORGET ME NOT / PRISM BAND TANKARD WATER PITCHER AND TUMBLER - BLUE (UNDERPRICED ITEM WITH NICE COLOR AND IRID.)**
206. Fenton Stretch Jack in the Pulpit Bud Vase - Velva Rose (nice)
207. 15 3/4" Fenton Rustic Mid-Size Swung Vase with Tight Crimped Edge - White (scarce)
208. 16 1/2" Fenton Rustic Mid-Size Swung Vase - Dk. Mari.
209. 12" Fenton Rustic Mid-Size Swung Vase - Green
210. **FENTON PANELLED DANDELION TANKARD PITCHER WITH 3 TUMBLERS - GREEN (SCARCE PITCHER; TUMBLERS SOLD SEPARATELY)**
211. 16 1/2" Fenton Fine Rib Mid-Size Swung Vase - Blue
212. Fenton Apple Tree Pitcher and 2 Tumblers - Mari. (sold as a set)
213. Fenton Blackberry Spray Jack in the Pulpit Edge Hat - Mari.
214. Fenton Blackberry Spray Square Hat - Aqua (scarce)
215. **FENTON KITTENS CUP AND SAUCER - MARI. (ALWAYS A POPULAR ITEM - NICE AND SCARCE)**
216. **FENTON KITTENS TOOTHPICK HOLDER - MARI. (SCARCE ITEM)**
217. Fenton April Showers Swung Vase - Blue
218. Fenton April Showers Swung Vase - Green
219. (2) Fenton Long Thumbprint Swung Vases - Amy. (sold per each for the pair)
220. **IMPERIAL BROKEN ARCHES PUNCH BOWL, BASE AND 3 CUPS - PUR. (SUPER COLOR AND IRID.; SOLD AS A SET; NICE)**
221. Imperial Broken Arches 8 pc. Punch Set - Mari. (nice scarce set)
222. (2) 12 - 14" Imperial Ripple Swung Vases - Pur. (selling choice; super irid.)
223. 10" Imperial Ripple Swung Vase - Pur. (super irid.)
224. Imperial Pansy Open Breakfast Sugar - Pur. (scarce item)
225. **IMPERIAL EMBOSSED SCROLL MINIATURE RUFFLED STEMMED COMPOTE - AMY. (A SUPER LITTLE MINIATURE - GETTING MORE POPULAR)**
226. **9 1/2" IMPERIAL EMBOSSED SCROLL FLAT PLATE - PUR. (SUPER COLOR AND AS FLAT AS THEY GET; NICE ITEM)**
227. Imperial Embossed Scroll Ruffled Compote with Curved Star Exterior - Pur. (super color; scarce)
228. Imperial Embossed Scroll Ruffled Compote with Curved Star Exterior - Pastel Mari. (super irid.)
229. 7" Imperial Embossed Scroll Deep Round Bowl - Pur. (great color)
230. 7 1/2" Imperial Embossed Scroll Ruffled Bowl with Hobstar Variant Exterior - Pur. (very scarce pattern variation; nice color)
231. Imperial Rococco Vase - Smoke (very scarce; has small chip)
232. Imperial Pansy Ruffled Bowl - Pur.
233. Imperial Sand and Shell Deep Flared Bowl - Pur. (scarce)
234. Imperial Pansy Ruffled Bowl - Helios Green
235. **10" IMPERIAL HEAVY GRAPE CHOP PLATE - WHITE (EXTREMELY RARE ITEM; FROSTY WITH GREAT STRETCH EFFECT)**
236. 8" Imperial Heavy Grape Plate - Green
237. 9 1/2" Imperial Heavy Grape Master berry Bowl - Lt. Blue Mari. (very unusual color)
238. Imperial Star and File Water Pitcher - Mari. (scarce pattern)
239. Imperial Poinsettia Milk Pitcher - Dk. Mari. (super color)
240. 9" Imperial Open Rose Plate - Green (scarce)
241. 8" Imperial Open Rose Ruffled Bowl - Amber
242. Geometric Imperial Stemmed Ruffled Compote - Mari. (? pattern)
243. Imperial Beaded Bullseye Swung Vase - Dk. Mari.
244. Imperial Miniature Morning Glory Vase - Mari.
245. Jenkins Cut Flowers Large Cylinder Vase - Mari.
246. 6" Westmoreland Scales Flat Plate - Amy.
247. (12) Elegant Buttons on Original Card - Dark (selling full card)
248. **IMPERIAL OCTAGON SALT SHAKER (NO LID) - PUR. (SUPER RARE IMPERIAL ITEM; ONLY KNOW OF A FEW)**
249. (4) 2" Plain Spittoon Shaped Individual Salt Dips - Lt. Mari. (odd items; sold as a set)
250. **6" N BEAUTY BUD VASE - AQUA OPAL. (EXTREMELY RARE AND SUPER; ONLY KNOW OF 2; ONE OF THE MOST WONDERFUL PASTEL NOVELTIES I'VE EVER SEEN; FANTASTIC!)**
251. Golden Wedding 1/10 Nip Bottle with all Labels and Original Contents - Mari. (unusual and cute)

252. 3" Tall Odd Melon Rib Flared Wine or Brandy Glass - Mari.
253. Plain Flared Tumbler with Etched Floral - Laurel Band - Lt. Mari.
254. European Domed Wine Glass with Ribbed Stem - Lt. Mari.
255. Late Encore Beer Bottle with Label - Lt. Mari.
256. (2) Barber Bottles with Enameled Floral Decor. - Lt. Mari. & Gray Flash (selling choice)
257. Westmoreland Miniature Shell - Amy. (spotty in center)
258. Unlisted Oblong Oval Punch Cup - Dk. Mari. (odd pattern)
259. Jeanette Butterfly Small Pin Tray - Lt. Smoke Flash
260. **FENTON KITTENS CUP AND SAUCER - DK. MARI. (VERY SCARCE; NICE COLOR AND DETAIL)**
261. **FENTON KITTENS SQUARE 4 RUFFLED BOWL - BLUE (RARE; NICE COLOR AND DETAIL)**
262. **FENTON KITTENS ODD SHAPED TOOTHPICK HOLDER - LT. BLUE (RARE; HAS 2 SETS; ODD LIGHT TINT)**
263. Imperial Flute Toothpick Holder - Pur. (nice color)
264. Imperial Flute Toothpick Holder - Dk. Mari. (nice color)
265. **FENTON FIGURAL BUTTERFLY ORNAMENT - DK. MARI. (RARE AND EXTREMELY DESIRABLE; GREAT DARK COLOR)**
266. 1908 Pittsburgh Shriners Toothpick Holder - Ruby Flash / Gold (very scarce)
267. Odd Ribbed Toothpick Holder - Mari. (? name of pattern)
268. Westmoreland Estate 3 ftd. Pin Nappy - Gray Flash (very nice color)
269. Unlisted European Geometric Hobstar Punch Cup - Dk. Mari. (different pattern; great color)
270. **ELEPHANT BROOCH - PROBABLY TIFFANY - ODD MARI. (EXTREMELY RARE; 1ST ONE SOLD IN QUITE SOME TIME; A REALLY NEAT ITEM)**
271. **2 1/2" TALL X 3" LONG ELEPHANT PAPERWEIGHT - LT. MARI. (VERY RARE AND UNUSUAL; NEVER SEEN ANOTHER ONE)**
272. **2 1/4" TALL X 3" LONG FIGURAL BULLDOG PAPERWEIGHT - LT. MARI. (VERY RARE AND UNUSUAL; NEVER SEEN THIS ONE EITHER)**
273. **SITTING PUPPY DOG FIGURAL CANDY CONTAINER - MARI. (SCARCE ITEM NOT OFTEN SOLD)**
274. Plain Spittoon Shaped Sauce with Wire Handle, Souvenir "Excelsior Springs, Missouri" - Mari. (unusual)
275. **2" X 2 1/2" MINIATURE COVERED HEN ON THE NEST - DK. MARI. (VERY RARE; A CUTE LITTLE ITEM)**
276. **3" X 3 1/2" SMALL COVERED HEN ON THE NEST - DK. MARI. (VERY RARE; NEXT SIZE UP - NICE COLOR)**
277. Ring Tree - Mari. (? pattern)
278. European Ring Tree - Dk. Mari.
279. European Oblong Pin Tray - Mari.
280. **IMPERIAL OPTIC 2 HANDLED PEDESTALED SALT DIP - MARI. (VERY DESIRABLE ITEM; SIGNED WITH IRON CROSS)**
281. European Curved Star and Hearts Hair Receiver with Nouveau Metal Lid - Dk. Mari. (odd European pattern; nice dark color)
282. Odd Plain Flower Frog (seems to need base) - Lt. Mari. (weird item)
283. Prince Machabelli Crown Shaped Squatty Perfume - Mari.
284. Star Patterned Perfume Bottle and Stopper - Dk. Mari. (very unusual; 1st one I've seen)
285. **(2) GEOMETRIC PATTERNED NAPKIN RINGS - LT. MARI. (VERY RARE ITEMS; SELLING CHOICE; HAS ETCHED INITIALS)**
286. Figural Ladies High Heeled Shoe - Lt. Mari. (unusual item; small chip on heel)
287. Daisy and Button Ladies High Heeled Shoe - Mari. (scarce; bright irid.; haven't seen too many)
288. Daisy and Button Hat Shaped Toothpick Holder - Mari. (very scarce; nice)
289. 4" Tall Banded Pyramid Shaped Perfume and Metal Top with Stylized Elephants - Clear (a different item)
290. **5" LONG ODD KNIFE REST WITH SPIRAL STEM - CLEAR (UNUSUAL ITEM)**
291. Figural Novelty Canoe - Lt. Mari. (scarce)
292. Figural Novelty Bath Tub - Lt. Mari. (scarce)
293. Late Plain Cruet with Hollow Stopper - Dk. Mari. (signed Hazel Atlas; super dark color)
294. 2 1/4 - 2 1/2" Tall Miniature Plain Stemmed Cordial - Mari. (a cutie)
295. **ODD FIGURAL WHEELBARROW ASHTRAY - MARI. (REALLY DIFFERENT ITEM; UNUSUAL)**
296. **PAIR SQUARE RIBBED TINY SALT AND PEPPER SHAKERS WITH TRAY - MARI. (VERY RARE AND CUTE; NOT OFTEN SEEN)**
297. Odd Pair Pineapple (?) Patterned Salt and Pepper Shakers with Tortoise Shell Tops - Mari. (unusual pattern; neat tops)
298. Pair Small Panelled Hazel Atlas Salt and Pepper Shakers - Mari. (scarce)
299. Pair Melon Rib Salt and Pepper Shakers with Metal Tops - Mari. (scarce)
300. **WESTMORELAND PANELLED JACK IN THE PULPIT VASE - LT. MARI. / MOONSTONE (VERY SCARCE ITEM; LIGHT IRID.)**
301. Westmoreland Hobstar Fruit 2 Sided Card Tray - Lt. P. Opal. (very desirable item; scarce pattern)
302. Stemmed Eye Cup signed "G" on Base - Dk. Mari. (could be a later item but neat)
303. Imperial Little Barrel - Dk. Mari. (scarce; nice color)
304. Westmoreland Miniature Shell - Teal Green
305. **FLYING BAT HATPIN - DARK (SCARCE AND DESIRABLE)**
306. Rooster Hatpin - Green
307. Short Beaded Hatpin - Dark
308. Long Beaded Hatpin - Dark
309. Fenton Stretch Flared Individual Saly Dip - Ice Green (scarce)
310. Fenton Flower Frog - Ice Green

