



AUCTION SERVICE

Carnival Glass, Art Glass & Misc. Pattern Glass Auction

Friday & Saturday, March 26 & 27, 1993

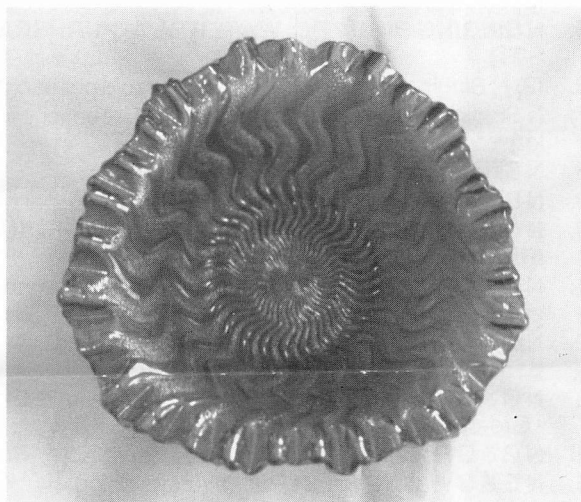
6:00 p.m., Friday, Lots 1-200 (preview: 3:00 p.m.)

9:00 a.m., Saturday, Lots 201 - end (preview: 8:00 a.m.)

at the Days Inn

Rte. 36, Brookville, Pa. 15825 (814) 849-8001

(Exit 13 of I-80)



We are pleased to be able to present to you, at auction, the glass collection of Mrs. & Mr. Nathan Rogers from Batavia, New York. These folks were active collectors back as far as I can remember - some of the first folks I knew in the hobby. Well, time has come to sell and I'm as impressed with some of their Art glass as I am any quality selection of glass we've sold. So be sure to make your plans - we'll see ya there!

The Days Inn at Brookville, Pa. will host the event. You can make your reservations by calling the motel direct at (814) 849-8001 and be sure to mention Burns Auction Service.

Mail bids due by Thursday, March 25, 1993

Mail Bids honored under the following conditions:

1. No deposit required. Bidders will take full responsibility to honor any and all bids we execute for them. Payment in full plus postage and handling required after notification and before we ship any item to them.
2. Items are bid on in perfect condition with average or above average iridescence OR as listed in the brochures. Bids will not be carried out when damage on an item has been found during the auction.
3. Successful bidders will be notified by collect call from the auctioneer **(so be sure to include phone number)**.
4. Phone inquiries about the glass or any other questions are welcome.
5. All non-successful will receive a result summary in the mail. Results of all bids will be provided.
6. If you have some other person at the auction bidding for you, they must pay for the item before taking it.
7. Mail bids due by Thursday, March 25, 1993.

Burns Auction Service

Tom Burns, Sales Mgr.
109 E. Steuben St.
Bath, New York 14810
(607) 776-7942

Bill Richards, Auctioneer
44 Water St.
Poland, Ohio 44514
(216) 757-2001

Bill Richards III
524 Poland Ave.
Struthers, Ohio 44471
(216) 755-2620

- ___ 1. Pastel Swan - Celeste Blue
- ___ 2. Pastel Swan - Ice Green
- ___ 3. Pastel Swan - Ice Green
- ___ 4. Pastel Swan - Odd Blue Opal. (not carnival)
- ___ 5. **N THREE FRUITS MEDALLION SPATULA FTD. RUFFLED BOWL WITH MEANDER EXTERIOR - AQUA OPAL. (VERY SCARCE; NICE OPAL. AND IRID.)**
- ___ 6. N Three Fruits Medallion Spatula ftd. Ruffled Bowl with Meander Exterior - Pur. (nice irid.)
- ___ 7. N Three Fruits Plate with Plain Exterior - Pur. (excellent irid.)
- ___ 8. N Three Fruits Plate with Plain Exterior - Green (scarce; nice)
- ___ 9. N Three Fruits Domed Ruffled Bowl with Basketweave and Vintage Exterior - Pur.
- ___ 10. N Fruit and Flowers Stemmed Handled Bon Bon - Mari.
- ___ 11. **N HEART AND FLOWERS RUFFLED BOWL WITH RIBBED EXTERIOR - GREEN (VERY RARE COLOR FOR THIS PATTERN; HAS A COUPLE OF VERY SMALL NICKS ON EDGE)**
- ___ 12. **N HEART AND FLOWERS RUFFLED BOWL WITH RIBBED EXTERIOR - ICE BLUE (VERY SCARCE; BEAUTIFUL COLOR AND IRID.)**
- ___ 13. N Heart and Flowers Bowl with Pie Crust Edge and Ribbed Exterior - Mari. (rare shape; has epoxied chip on base)
- ___ 14. **N EMBROIDERED MUMS RUFFLED BOWL WITH RIBBED EXTERIOR - BLUE (VERY SCARCE; NICE COLOR)**
- ___ 15. **N ROSE SHOW RUFFLED BOWL - AQUA OPAL. (PASTEL AND SUPER; SMALL MANUF. ROUGHNESS ON COLLAR BASE)**
- ___ 16. **N ROSE SHOW RUFFLED BOWL - PUR. (VERY SCARCE AND ATTRACTIVE; HAS BLUE HIGHLIGHTS; PINHEAD ON ROSES)**
- ___ 17. N Rose Show Ruffled Bowl - Pur. (scarce; silvery irid.; has chip on one rose)
- ___ 18. **N POPPY SHOW RUFFLED BOWL - WHITE (VERY SCARCE; NICE IRID. AND FROSTY)**
- ___ 19. **N DRAPERY ROSE BOWL - PUR. (VERY SCARCE ITEM WITH NICE HIGHLIGHTS)**
- ___ 20. **N PEACOCK AT THE FOUNTAIN PUNCH BOWL AND BASE - BLUE (SUPER TOP WITH NICE IRID.; BASE GLUED; NICE)**
- ___ 21. **N PEACOCK AT THE FOUNTAIN 4 PC. TABLE SET - PUR. (TO BE SOLD SEPARATELY; SUGAR AND SPOONER ARE SUPER; BUTTER TOP IS AVERAGE; BASE IS GREAT; CREAMER IS FAIR)**
- ___ 22. **N PEACOCK AT THE FOUNTAIN 7 PC. BERRY SET - ICE BLUE (SUPER SET; NICE COLOR AND IRID.)**
- ___ 23. **N PEACOCKS PLATE WITH PLAIN EXTERIOR - ICE GREEN (SUPER COLOR AND IRID.; SCARCE)**
- ___ 24. N Poppy Ruffled Relish Tray - Elec. Blue (super irid.)
- ___ 25. **N IVY TOWN PUMP - PUR. (PERFECT IN EVERY WAY; EXCELLENT GOLD / MULTI-COLORED IRID.)**
- ___ 26. **N STRAWBERRY PLATE WITH PLAIN EXTERIOR - AMY. (SUPER IRID. AND VERY DESIRABLE)**
- ___ 27. **N STRAWBERRY BOWL WITH PIE CRUST EDGE AND PLAIN EXTERIOR - GREEN (FANTASTIC COLOR AND IRID.)**
- ___ 28. N Strawberry Bowl with Pie Crust Edge and Plain Exterior - Green (super color and irid.)
- ___ 29. N Strawberry Ruffled Bowl with Basketweave Exterior - Pur.
- ___ 30. **N WILD STRAWBERRY HANDGRIP PLATE WITH BASKETWEAVE EXTERIOR - DK. MARI. (EXCELLENT COLOR AND IRID.)**
- ___ 31. 9 1/4" N Pillar Ribbed Swung Vase - Dk. Mari.
- ___ 32. 10" N Diamond Point Swung Vase - Amy. (silvery)
- ___ 33. 9" N Tree Trunk Swung Vase - Amy. (silvery)
- ___ 34. N Tornado Vase - Pur. (epoxy and cracked)
- ___ 35. **N EIGHT SIDED BUSHEL BASKET - WHITE (VERY SCARCE)**
- ___ 36. **N ROUND BUSHEL BASKET - PUR. (SCARCE)**
- ___ 37. **N ROUND BUSHEL BASKET - DK. MARI. (SUPER COLOR)**
- ___ 38. N Wishbone ftd. Ruffled Bowl - Pur.
- ___ 39. N Wishbone ftd. Ruffled Bowl - Mari.
- ___ 40. **N RASPBERRY 5 PC. WATER SET - PUR. (SCARCE SET)**
- ___ 41. (2) N Raspberry Tumblers - Pur. (super irid.; selling choice)
- ___ 42. **N RASPBERRY MILK PITCHER - PUR. (SCARCE ITEM)**
- ___ 43. N Raspberry ftd. Occasional Piece (or Gravy) - Green (damaged feet)
- ___ 44. N Good Luck Ruffled Bowl with Ribbed Exterior - Blue (epoxied around edge)
- ___ 45. **N SINGING BIRD 7 PC. WATER SET - PUR. (SCARCE SET)**
- ___ 46. (2) N Singing Bird Tumblers - Green (sold per each)
- ___ 47. N Singing Bird Individual Berry Bowl - Green (super color)
- ___ 48. N Singing Bird Mug - Dk. Mari. (nice color)
- ___ 49. N Butterfly Handled Bon Bon - Pur.
- ___ 50. **N G & C HANDLED BON BON - ELEC. BLUE (SUPER IRID.)**
- ___ 51. N G & C Banded ftd. Hatpin Holder - Pur. (rare; one foot epoxied)
- ___ 52. N G & C Variant Bowl with Pie Crust Edge and Basketweave Exterior - Pur.
- ___ 53. N G & C Variant Ruffled Bowl with Basketweave Exterior - Green (nice color)
- ___ 54. N G & C Pedestaled Individual Ice Cream Bowl - Pur.
- ___ 55. N G & C Water Pitcher - Pur. (average color)
- ___ 56. (7) N G & C Tumblers - Amy. (super; sold per each)
- ___ 57. N G & C Breakfast Creamer - Pur.
- ___ 58. N G & C Banded Stippled Large Dresser Tray - Lt. Mari. (very light color)
- ___ 59. N G & C Covered Tobacco Jar - Dk. Mari. (one tobacco jar prong damaged; collar base chipped)
- ___ 60. N Acorn Burr Tumbler - Amy. (super irid.)
- ___ 61. N Oriental Poppy Tumbler - Pur. (silvery)
- ___ 62. S Repeat Tumbler - Amy. with Gold (not carnival; very scarce)
- ___ 63. N Daisy and Plume Stemmed Ruffled Compote - Green / Mari.
- ___ 64. N Daisy and Plume Stemmed Ruffled Compote - Mari.
- ___ 65. N Daisy and Plume 3 ftd. Ruffled Candy Dish with Berry Interior - Pur.
- ___ 66. N Lustre Flute Ruffled Hat - Green
- ___ 67. N Lustre Flute Ruffled Hat - Mari.
- ___ 68. N Lustre Flute Breakfast Sugar - Green
- ___ 69. N Panelled Holly 2 Handled Flared Candy Dish - Green
- ___ 70. N Greek Key Ruffled Bowl with Basketweave Exterior - Amy. (scarce)
- ___ 71. N Star of David and Bows Domed Ruffled Bowl - Amy.
- ___ 72. N Star of David and Bows Domed Ruffled Bowl - Mari.
- ___ 73. N Sunflower ftd. Ruffled Bowl with Meander Exterior - Amy.
- ___ 74. N Sunflower ftd. Ruffled Bowl with Meander Exterior - Green
- ___ 75. N Sunflower ftd. Ruffled Bowl with Meander Exterior - Green / Mari.
- ___ 76. N Greek Key Domed Ruffled Bowl with Stippled Rays Interior - Mari.

- ___ 77. N Stippled Rays Interior Ruffled Bowl - Amy.
- ___ 78. N Beaded Cable ftd. Ruffled Candy Dish with Rays Interior - Green
- ___ 79. N Beaded Cable ftd. Ruffled Ruffled Candy Dish with Rays Interior - Mari.
- ___ 80. **N FINE CUT AND ROSES FTD. ROSE BOWL WITH FANCY INTERIOR - PUR. (VERY SCARCE WITH INTERIOR PATTERN)**
- ___ 81. N Fine Cut and Roses ftd. Ruffled Candy Dish with Fancy Interior - White (chipped feet)
- ___ 82. N Fine Cut and Roses ftd. Ruffled Candy Dish - Amy. (epoxied edge)
- ___ 83. N Leaf and Beads ftd. Rose Bowl with Floral Ribbed Interior - Pur. (cracked)
- ___ 84. N Leaf and Beads ftd. Rose Bowl with Stippled Rays Interior - Green (cracked)
- ___ 85. **(2) N PILLAR AND DRAPE SQUARE RUFFLED SHADES - DK. MARI. / MOONSTONE (SCARCE; SUPER COLOR AND IRID.)**
- ___ 85A. N Pillar and Drape Square Ruffled Shade with Brass Gooseneck Base - Moonstone (super)
- ___ 86. Northwood Thin Rib Shade - Dk. Mari. / Moonstone (super color)
- ___ 87. N Wild Rose ftd. Candy Dish with Rays Interior - Green
- ___ 88. N Pansy Exterior Ruffled Bowl with Plain Interior - Green
- ___ 89. N Grape Leaves Ruffled Bowl with Pansy and Plume Exterior - Mari.
- ___ 90. N Plain Interior Bowl with 3 in 1 Edge and Pansy and Plume Exterior - Lt. Mari.
- ___ 91. N Acorn Burr Punch Cup - Lt. White
- ___ 92. 9 1/2" N Stippled Rays Large Bowl with Pie Crust Edge - Amy.
- ___ 93. N Plain Rays 2 Handled Bon Bon - Amy.
- ___ 94. N Basketweave Exterior Stemmed Ruffled Compote with Plain Interior - Pur.
- ___ 95. N Wide Panel Stemmed Flared Sherbet - Mari.
- ___ 96. N Adams Rib Large Covered Short Stemmed Candy Jar - Mari.
- ___ 97. **CAMBRIDGE INVERTED FEATHER COVERED CRACKER JAR - GREEN (VERY SCARCE; NICE COLOR)**
- ___ 98. Cambridge Inverted Strawberry Individual Berry Bowl - Amy. (very scarce item)
- ___ 99. M'burg Cosmos Ice Cream Shaped Bowl - Green (radium)
- ___ 100. **M'BURG TROUT AND FLY 6 RUFFLED BOWL - AMY. (RADIUM AND ONE OF THE BEST EXAMPLES I'VE SEEN)**
- ___ 101. **M'BURG FLEUR DE LEI 6 RUFFLED CRIMPED EDGE BOWL AMY. (RADIUM WITH SUPER IRID.)**
- ___ 102. **M'BURG FLEUR DE LEI 6 RUFFLED CRIMPED EDGE BOWL - AMY. (RADIUM WITH SUPER IRID.)**
- ___ 103. 9 1/2" M'burg Holly Whirl 6 Ruffled Bowl - Amy. (radium; super)
- ___ 104. M'burg Holly Sprig Deep 2 Handled Bon Bon - Amy. (radium)
- ___ 105. **M'BURG LETTERED COURTHOUSE 6 RUFFLED BOWL - AMY. (RADIUM; SUPER COLOR AND IRID.; VERY RARE)**
- ___ 106. 8 1/2" M'burg Grape Wreath 6 Ruffled Bowl - Amy. (radium; scarce)
- ___ 107. 7 1/2" M'burg Blackberry Wreath 6 Ruffled Bowl - Amy. (radium; super)
- ___ 108. 7 1/2" M'burg Blackberry Wreath 6 Ruffled Bowl - Green
- ___ 109. **M'BURG ZIG ZAG TRI-CORNERED CRIMPED EDGE BOWL - GREEN (SLIGHT ROUGHNESS ON 2 SPOTS ON EDGE; SUPER AND RADIUM)**
- ___ 110. **M'BURG RAYS AND RIBBONS "ROSE BOWL" TURNED IN ROUND BOWL - MARI. (RADIUM AND TURNED IN JUST ENOUGH; ODD)**
- ___ 111. **M'BURG STRAWBERRY WREATH STEMMED RUFFLED COMPOTE - DK. MARI. (RADIUM; SUPER COLOR AND IRID.; REALLY NICE)**
- ___ 112. M'burg Whirling Leaves 6 Ruffled Bowl - Mari. (satiny; nice)
- ___ 113. M'burg Little Stars 6 Ruffled Bowl - Mari. (satiny; nice color and irid.)
- ___ 114. M'burg Holly Sprig 2 Handled Bon Bon with Isaac Benesch Advert. - Mari. (2 small chips)
- ___ 115. M'burg Hanging Cherries Covered Butter Dish - Green Top - Amy. Bottom (scarce items)
- ___ 116. Dugan Miniature Basketweave Handled Flower Basket - Mari. (epoxy on edge)
- ___ 117. Dugan Beaded Basket - Mari.
- ___ 118. Dugan Rose Wreath Tri-Cornered Pulled Whimsey - Mari.
- ___ 119. Dugan Rose Wreath Rose Bowl - Mari.
- ___ 120. **DUGAN SKI STAR DOMED BOWL WITH 3 IN 1 EDGE AND COMPASS EXTERIOR - PUR. (SUPER IRID.; SOME GOLD; VERY SCARCE)**
- ___ 121. Dugan Holly Whirl Ten Ruffled Low Bowl - Pur. (nice color and irid.)
- ___ 122. Dugan Holly Whirl Ruffled Handled Gravy Boat - Pur. (scarce; nice)
- ___ 123. Dugan Cherries Low 8 Ruffled Sauce with Jewelled Heart Exterior - Amy.
- ___ 124. Dugan Thumbprint Stemmed Ruffled Compote - Amy.
- ___ 125. **7 1/2" DUGAN GRAPEVINE LATTICE FLAT PLATE - PUR. (SCARCE; VERY FLAT; PINHEAD ON BASE)**
- ___ 126. Dugan Grape Delight 6 ftd. Rose Bowl - Pur. (nice color)
- ___ 127. Dugan Grape Delight 6 ftd. Rose Bowl - Pur.
- ___ 128. Dugan Fishermans Mug - Pur. (silvery; chipped base)
- ___ 129. (2) Dugan Beaded Shell Individual ftd. Berry Bowls - one chipped on foot; selling pair)
- ___ 130. **9" DUGAN ROUND UP RUFFLED BOWL / PLATE - BLUE (SCARCE; NICE)**
- ___ 131. Dugan Puzzle 2 Handled Flared Bon Bon - Pur.
- ___ 132. Dugan Dahlia ftd, Individual Berry Bowl - Amy. (scarce)
- ___ 133. Dugan Beaded Stork and Rushes Tumbler - Amy. (silvery)
- ___ 134. Dugan Peacock at the Fountain Tumbler - Blue (chipped on base)
- ___ 135. **DUGAN MANY FRUITS RUFFLED PUNCH AND BASE - PUR. (SUPER COLOR ON THE TOP; BASE GOLDISH; SCARCE)**
- ___ 136. (6) Dugan Many Fruits Punch Cup - Blue (very rare color; sold per each for set)
- ___ 137. Dugan S Repeat Punch Cup - Pur. (silvery)
- ___ 138. (2) Dugan Leaf Ray 1 Handled Nappys - Mari. (selling the pair)
- ___ 139. Dugan Leaf Ray 1 Handled Nappy - White (nice)
- ___ 140. **9 1/2 - 10" DUGAN PETAL AND FAN LARGE ICE CREAM BOWL WITH JEWELLED HEART EXTERIOR - WHITE (VERY SCARCE; NICE AND FROSTY; TINY NICK ON BASE)**
- ___ 141. **10 1/2" DUGAN PERSIAN GARDEN LARGE ICE CREAM BOWL - WHITE (VERY SCARCE; VERY NICE COLOR AND IRID.)**
- ___ 142. (2) 6" Dugan Persian Garden Individual Ice Cream Bowls - White (selling choice; nice)
- ___ 143. **DUGAN DOUBLE STEM ROSE DOMED DEEP PLATE - WHITE (SCARCE; NICE AND FROSTY)**
- ___ 144. Dugan Apple Blossom Twigs Low Ruffled Bowl - White (scarce; super irid.)
- ___ 145. Dugan Heavy Iris Tumbler - White (smoothed base but very scarce)

- ___ 146. Dugan Fanciful Low Ruffled Bowl - White (scarce; frosty)
- ___ 147. Dugan Constellation Stemmed Ruffled Compote - White (scarce; nice irid.)
- ___ 148. 7 1/2" Dugan Grapevine Lattice Low Ruffled Bowl - White
- ___ 149. (2) Dugan Vining Twigs Swung Vases - White (one chipped around base)
- ___ 150. **DUGAN BIG BASKETWEAVE SWUNG VASE - WHITE (SCARCE; VERY NICE EXAMPLE)**
- ___ 151. (2) Dugan Lined Lattice Swung Vases - White (sold so much each for pair)
- ___ 152. Dugan Target Swung Vase - Mari.
- ___ 153. Dugan Thin Rib Squatty Flared Vase - P. Opal.
- ___ 154. Dugan Folding Fan Oblong Crimped Stemmed Compote - P. Opal. (scarce pattern; nice)
- ___ 155. **DUGAN SINGLE FLOWER EXTERIOR / ENAMELLED DECORATED "LILIES OF THE VALLEY" INTERIOR - DK. P. OPAL. (SCARCE; NICE DECORATION)**
- ___ 156. Dugan Open Opals Stemmed Ruffled Compote - P. Opal. (super opal.)
- ___ 157. Dugan Thumbprint Stemmed Ruffled Compote - P. Opal. (super opal.)
- ___ 158. Dugan Puzzle 2 Handled Round Bon Bon - P. Opal.
- ___ 159. 7 1/2" Dugan Six Petals 6 Ruffled Bowl - P. Opal.
- ___ 160. **DUGAN APPLE BLOSSOM TWIGS BOWL WITH 3 IN 1 EDGE AND PLAIN EXTERIOR - P. OPAL. (SUPER EXAMPLE; SCARCE ITEM)**
- ___ 161. 10" Dugan Ski Star Ruffled Bowl with Compass Exterior - P. Opal.
- ___ 162. Dugan Single Flower Exterior Bowl with 3 in 1 Edge - P. Opal.
- ___ 163. Dugan Panelled Cherries 3 ftd. Deep Crimped Edge Bowl - P. Opal. (super opal.)
- ___ 164. Dugan Caroline Deep Round Crimped Edge Bowl - P. Opal.
- ___ 165. **DUGAN CAROLINE EDGE TRI-CORNERED BOWL IN SILVER PLATE BRIDE'S BASKET FRAME - P. OPAL. (UNUSUAL ITEM; BEEN LIKE THIS FOR YEARS)**
- ___ 166. Dugan Holly Whirl One Handled Sauce - P. Opal.
- ___ 167. 6" Dugan Ribbed Interior / Jewelled Exterior Crimped Banana Shaped Bowl - P. Opal.
- ___ 168. 6" Dugan Ribbed Interior / Jewelled Exterior Ruffled Crimped Sauce - P. Opal.
- ___ 169. 6" Dugan Petal and Fan Ruffled Sauce with Jewelled Heart Exterior - Lt. P. Opal.
- ___ 170. 6" Dugan Garden Path Variant Ruffled Sauce with Soda Gold Exterior - P. Opal. (scarce item)
- ___ 171. 7 1/2" Dugan Holly Whirl Ruffled Bowl - P. Opal.
- ___ 172. Dugan Stork and Rushes with Lattice Band Mug - Mari.
- ___ 173. Dugan Grapevine Lattice Tumbler - Mari.
- ___ 174. Dugan Maple Leaf Tumbler - Mari.
- ___ 175. **9" DUGAN FANCIFUL FLAT PLATE - MARI. (FLAT AND NICE SATINY FINISH; ONE OF THE BETTER EXAMPLES)**
- ___ 176. Dugan Pony 6 Ruffled Bowl - Mari. (radium finish)
- ___ 177. Dugan Vineyard 7 pc. Water Set - Mari. (crack at the handle of pitcher)
- ___ 178. Dugan Puzzle 2 Handled Bon Bon - Mari.
- ___ 179. Dugan Vintage Covered Powder Jar - Mari.
- ___ 180. Dugan Pods and Posies Deep Flared Bowl - Mari.
- ___ 181. 6 1/2" Dugan Fishscale and Beads Low Ruffled Bowl - Lt. Mari.
- ___ 182. Dugan Windflower Ruffled Bowl - Mari.
- ___ 183. Dugan Windflower Ruffled Bowl - Lt. Mari.
- ___ 184. Fenton Large 2 Row Open Edge 2 Sided Basketweave Hat - Dep. Green

- ___ 185. **FENTON LARGE BLACKBERRY 2 ROW OPEN EDGE 2 SIDED HAT - RED (VERY NICE EXAMPLE; NICE COLOR AND IRID.)**
- ___ 186. Fenton 2 Row Open Edge Jack in the Pulpit Hat - Red (check in lattice but nice color and irid.)
- ___ 187. **7 1/2" FENTON ACORNS DEEP ROUND BOWL - RED (RARE; HAS NICE BRIGHT COLOR AND IRID.)**
- ___ 188. **FENTON BLACKBERRY SPRAY SQUARE RUFFLED HAT - RED (RARE; NICE RED COLOR AND SATIN FINISH)**
- ___ 189. Fenton Holly Ruffled Hat - Amberina (scarce)
- ___ 190. **9 1/4" FENTON BUTTERFLY AND BERRY SWUNG VASE - RED SLAG (SUPER EXAMPLE AND PERFECT; VERY RARE)**
- ___ 191. 10" Fenton Diamond Rib Swung Vase - Mari.
- ___ 192. 9" Fenton Fine Rib Swung Vase - Mari.
- ___ 193. 10" Fenton Long Thumbprint Swung Vase - Green
- ___ 194. 16 3/4" Fenton Fine Rib Mid-size Swung Vase - Blue
- ___ 195. **FENTON PANTHER FTD. MASTER BERRY BOWL - WHITE (EXTREMELY RARE ITEM; SUPER COLOR BUT ONE POINT HAS BEEN EPOXIED)**
- ___ 196. Fenton Panther Individual Berry Bowl - Mari.
- ___ 197. Fenton Butterfly and Berry ftd. Master Berry Bowl - Mari. (damaged feet)
- ___ 198. Fenton Lions 6 Ruffled Bowl - Dk. Mari. (very scarce; nice color)
- ___ 199. **FENTON HORSEHEAD MEDALLION JACK IN THE PULPIT FTD. BOWL - MARI. / VASELINE (VERY SCARCE; WOULD TEND TO GLOW)**
- ___ 200. **10" FENTON STAG AND HOLLY LARGE FTD. ICE CREAM SHAPED BOWL - BLUE (SCARCE; ONE OF THE BETTER EXAMPLES I'VE SEEN)**

START OF SECOND SESSION

- ___ 201. Fenton Butterfly and Fern 7 pc. Water Set - Blue (pitcher cracked but nice)
- ___ 202. Fenton God and Home Tumbler - Blue (cracked)
- ___ 203. Fenton Lattice and Grape Tumbler - Blue
- ___ 204. Fenton Floral and Grape Tumbler - Amy. (silvery)
- ___ 205. Fenton Panelled Dandelion Tumbler - Amy. (scarce)
- ___ 206. Fenton Butterfly and Berry Tumbler - Blue
- ___ 207. Fenton Butterfly and Berry Tumbler - Mari.
- ___ 208. Fenton Fluffy Peacock Tumbler - Amy. (silvery; scarce)
- ___ 209. Fenton Orange Tree Stemmed Goblet - Mari.
- ___ 210. **FENTON WREATH OF ROSES 8 PC. PUNCH SET WITH VINTAGE INTERIOR - GREEN (VERY SCARCE SET; NICE SATINY FINISH)**
- ___ 211. Fenton Illusion 2 Handled Bon Bon - Blue (very scarce pattern)
- ___ 212. Fenton Bird and Cherries 2 Handled Bon Bon - Blue (chipped)
- ___ 213. Fenton Rose Wreath Stemmed Bon Bon - Blue
- ___ 214. Fenton Stippled Rays 2 sided Handled Bon Bon - Amy.
- ___ 215. Fenton Butterflies 2 Handled Bon Bon - Amy. (epoxied base)
- ___ 216. Fenton Strawberry 2 Handled Bon Bon - Odd Mari.
- ___ 217. Fenton Two Flowers Large Ruffled Bowl - Blue (silvery)
- ___ 218. 9 1/2" Fenton Little Flowers Large Ruffled Bowl - Green
- ___ 219. 9 1/2" Fenton Feathered Serpent Large Ruffled Bowl with Honeycomb and Clover Exterior - Mari. (nice color)
- ___ 220. **9" FENTON PEACOCK AT THE URN 6 RUFFLED BOWL - WHITE (VERY SCARCE; REALLY NICE COLOR AND IRID.)**
- ___ 221. 9" Fenton Peacock at the Urn 8 Ruffled Bowl - Dk. Mari. (nice color)
- ___ 222. **FENTON PEACOCK AT THE URN STEMMED RUFFLED COMPOTE - AQUA / MARI. (VERY SCARCE COLOR FOR THIS ITEM)**

- ___ 223. Fenton Peacock at the Urn Stemmed Ruffled Compote - Mari.
- ___ 224. Fenton Stream of Hearts Stemmed Crimped Ruffled Compote - Mari.
- ___ 225. Fenton Iris Stemmed Ruffled Compote - Mari.
- ___ 226. Fenton Blackberry Bramble Stemmed Ruffled Compote - Amy.
- ___ 227. Fenton Blackberry Bramble Stemmed Ruffled Compote - Green
- ___ 228. Fenton Holly Stemmed Crimped Edge Ruffled Compote - Mari. (odd shape; scarce)
- ___ 229. Fenton Holly Stemmed Ruffled Compote - Mari.
- ___ 230. **FENTON KITTENS RUFFLED TOOTHPICK HOLDER - DK. MARI. (VERY SCARCE; NICE COLOR)**
- ___ 231. **FENTON KITTENS 2 SIDED BANANA DISH - DK. MARI. (VERY SCARCE; NICE COLOR)**
- ___ 232. Fenton Enamelled Cherries 9 pc. Water Set - Blue (check in handle)
- ___ 233. Fenton Dragon and Lotus Ruffled Bowl - Blue
- ___ 234. Fenton Dragon and Lotus Ruffled Bowl - Mari.
- ___ 235. **FENTON ORANGE TREE FLAT PLATE - BLUE (VERY SCARCE; EXCELLENT COLOR AND IRID.)**
- ___ 236. **FENTON ORANGE TREE WITH TRUNK FLAT PLATE - WHITE (SCARCE; SUPER COLOR AND IRID.)**
- ___ 237. Fenton Orange Tree 6 Ruffled Bowl - White
- ___ 238. **FENTON LEAF CHAIN FLAT PLATE - WHITE (VERY SCARCE; SUPER COLOR AND IRID.)**
- ___ 239. Fenton Fentonia 3 ftd. Table Creamer - Blue (very scarce item; nice)
- ___ 240. **8 3/4" FENTON 10 MUMS BOWL WITH TIGHT CRIMPED CANDY RIBBON EDGE - AMY. (SUPER COLOR FOR A SCARCE ITEM)**
- ___ 241. 10" Fenton Persian Medallion Large 6 Ruffled Bowl - Amy. (super color and irid.)
- ___ 242. Fenton Holly Ruffled Bowl with Low 3 in 1 Edge - Blue (silvery)
- ___ 243. Fenton Holly Deep 6 Ruffled Bowl - Blue
- ___ 244. 6 1/2" Fenton Pine Cone Ice Cream Shaped Bowl - Blue (scarce size)
- ___ 245. **FENTON THISTLE LARGE FTD. BANANA BOAT - AMY. (SUPER COLOR AND PERFECT; VERY SCARCE)**
- ___ 246. Fenton G & C ftd. Fruit Bowl with Persian Medallion Interior - Mari.
- ___ 247. 6 3/4" Fenton Acorns Ice Cream Shaped Bowl - Aqua (scarce color)
- ___ 248. 6 3/4" Fenton Acorns Ice Cream Shaped Bowl - Amy. (scarce)
- ___ 249. 6 3/4" Fenton Acorns Ice Cream Shaped Bowl - Blue
- ___ 250. **FENTON SAILBOATS DEEP ROUND FLARED SAUCE - GREEN (SCARCE COLOR; EXCELLENT DETAIL)**
- ___ 251. Fenton Persian Medallion Round Flared Sauce - Blue
- ___ 252. Fenton Stippled Rays Round Flared Sauce - Green
- ___ 253. Fenton Peacock Tail Round Flared Sauce - Green
- ___ 254. 7 1/4" Fenton G & C Round Flared Bowl - Blue
- ___ 255. Fenton Peacock and Grape Ice Cream Shaped Bowl - Blue
- ___ 256. Fenton Peacock and Grape Ice Cream Shaped Bowl - Mari. (chipped and cracked)
- ___ 257. Fenton Captive Rose 6 Ruffled Bowl - Blue
- ___ 258. Fenton Thistle 6 Ruffled Bowl - Green
- ___ 259. Fenton Thistle Bowl with 3 in 1 Edge - Mari.
- ___ 260. Fenton Vintage ftd. Fern Dish - Blue
- ___ 261. Fenton Vintage Grape Bowl with Tight Candy Ribbon Edge - Amy.
- ___ 262. 7" Fenton Vintage Grape Deep Round Bowl - Mari.
- ___ 263. 9" Fenton Chrysanthemum Ruffled Bowl - Mari.
- ___ 264. Fenton Ribbon Tie Bowl with 3 in 1 Edge - Mari.
- ___ 265. Fenton Coin Spot Rose Bowl - Green
- ___ 266. Fenton Stippled Rays Tri-Cornered Sauce - Amy.
- ___ 267. Fenton Peacock Tail Square Ruffled Hat - Blue
- ___ 268. Fenton Holly Square Ruffled Hat - Blue
- ___ 269. Fenton Orange Tree Punch Cup - Blue
- ___ 270. Fenton Orange Tree Shaving Mug - Blue
- ___ 271. Fenton Orange Tree Breakfast Open Sugar - Mari.
- ___ 272. Fenton Lotus and Poinsettia ftd. Ruffled Sauce - Mari.
- ___ 273. (4) Fenton Stretch Stemmed Sherbets - Celeste Blue
- ___ 274. 7" Fenton Stretch Squatty Stemmed Flared Bowl - Vaseline
- ___ 275. **FENTON 3 ROW OPEN EDGE RUFFLED BOWL ON SILVER PLATE PEDESTAL - CELESTE BLUE (A FEW ROUGH SPOTS BUT A RARE AND DESIRABLE ITEM)**
- ___ 276. **5" FENTON 2 ROW OPEN EDGE ICE CREAM SHAPED BOWL - WHITE (VERY SCARCE ITEM; NICE SIZE)**
- ___ 277. Fenton 2 Row Open Edge Ruffled Hat - Mari.
- ___ 278. (2) Diamond Patterned Stretch Wax Candle Holders - Celeste Blue (nice items; sold per each)
- ___ 279. (3) Diamond Patterned Stretch Wax Candle Holders - White (scarce; sold per each)
- ___ 280. Fenton Stretch 2 pc. Tumble Up - Celeste Blue (scarce)
- ___ 281. Fenton Stretch Large Size Melon Rib Fan Vase - Ice Green
- ___ 282. Fenton Stretch Stemmed Panelled Doughnut Tray - White
- ___ 283. Pair Panelled Stretch Candlesticks - Olive Green
- ___ 284. Pair U.S. Glass Stretch Hollow Candlesticks - Celeste Blue
- ___ 285. **5" TALL X 4 1/4" ACROSS X 2 1/2" BASE IMPERIAL STRETCH FLARED VASE - RED (A CUTE LITTLE ITEM; NICE)**
- ___ 286. Imperial Stretch Wide Panel Sherbet And Underplate - Red
- ___ 287. 8 1/4" Imperial Stretch Wide Panel Plate - Amberina
- ___ 288. 9" Imperial Jewels (not signed) Low Ice Cream Shaped Console Bowl - Pur.
- ___ 289. 9 1/2" U.S. Glass Ruffled Flared Bowl - Pur. (rough base)
- ___ 290. Fenton Stretch Cupped In "Rose Bowl" with Gold Trim - Celeste Blue
- ___ 291. 8 1/4" Imperial Stretch Wide Panel Plate - White
- ___ 292. Imperial Handled Stretch Cookie Tray - White
- ___ 293. 9 1/2" Fenton Stretch Flared Console Bowl - Celeste Blue
- ___ 294. Westmoreland Pearly Dots Plate - Amy.
- ___ 295. Westmoreland Leaf Swirl Ruffled Compote - Amy. (scarce; nice)
- ___ 296. Westmoreland Corinth 2 Sided Banana Dish - Amber
- ___ 297. Westmoreland Orange Peel Punch Cup - Teal
- ___ 298. Westmoreland Louisa 3 ftd. Nut Bowl - Mari.
- ___ 299. Westmoreland Strutting Peacock Covered Creamer and Sugar (no lid) - Amy.
- ___ 300. Westmoreland Estate Breakfast Sugar and Creamer - P. Opal. (selling pair for one money; nice matched set)
- ___ 301. Westmoreland Shell and Jewel Covered Sugar and Creamer - Mari.
- ___ 302. 8" Westmoreland Pillow and Sunburst Flared Plate - Amy.
- ___ 303. European Five Lily Epergne with Silver Plate Frame - Mari.
- ___ 304. European Headdress / Curved Star Exterior Ruffled Bowl - Mari.

- ___ 305. **AUSTRALIAN BUTTERFLY BUSH LARGE STEMMED RUFFLED COMPOTE - PUR. (RARE ITEM; GREAT COLOR AND IRID.)**
- ___ 306. **SOWERBY COVERED HEN ON THE NEST WITH ORIGINAL SOWERBY FOIL LABEL - DK. MARI. (THE LABEL MAKES THIS ONE HECK OF A NEAT ITEM)**
- ___ 307. Sowerby Pineapple Rose Bowl - Dk. Mari. (super color)
- ___ 308. European Unlisted "Oblong Pineapple Fan" Large Pedestaled Tumbler - Mari.
- ___ 309. Jenkins Cut Flowers Large Cylinder Vase - Mari.
- ___ 310. Imperial Fashion 6 pc. Punch Set - Mari.
- ___ 311. Imperial Fashion Breakfast Open Sugar - Smoke (very scarce item; super color)
- ___ 312. Imperial Fashion Tumbler - Dk. Mari.
- ___ 313. Imperial Grape 9 pc. Berry Set - Helios Green (selling set as one)
- ___ 314. Imperial Pansy Breakfast Sugar and Creamer - Helios Green (creamers epoxied)
- ___ 315. Imperial Sat of David 8 Ruffled Bowl - Pur. (super color and irid.)
- ___ 316. 8 1/2" Imperial Open Rose Ruffled Bowl - Pur. (super color)
- ___ 317. 9" Imperial Pansy Ruffled Bowl - Pur. (nice item)
- ___ 318. 8" Imperial Embossed Scroll Deep Round Bowl - Pur. (nice irid.)
- ___ 319. 5" Imperial Embossed Scroll / File Exterior Ruffled Sauce - Pur. (super color)
- ___ 320. Imperial Diamond Lace Large Ruffled Master Berry Bowl - Pur. (super irid.)
- ___ 321. 8" Imperial Cane Ruffled Bowl - Pur. (damaged at base; scarce)
- ___ 322. Imperial Grape Punch Cup - Pur. (scarce)
- ___ 323. Imperial Lustre Rose 7 pc. Water Set - Pastel Mari. (nice color and irid.)
- ___ 324. 8 1/2" Imperial Open Rose Deep Round Bowl - Amber
- ___ 325. Imperial Diamond Ring Ruffled Bowl - Smoke
- ___ 326. Imperial Windmill Ruffled Relish Dish - Helios Green
- ___ 327. Imperial Pansy Oblong Relish Tray - Helios Green
- ___ 328. Imperial Tiger Lily Tumbler - Helios Green
- ___ 329. 7" Imperial Heavy Grape Deep Round Bowl - Helios Green
- ___ 330. Imperial Embossed Scroll Stemmed Ruffled Compote - Helios Green
- ___ 331. Imperial Flute Punch Cup (Round Base) - Helios Green
- ___ 332. Imperial Poinsettia Milk Pitcher - Dk. Mari. (super color)
- ___ 333. Imperial Star and File Large Ruffled Stemmed Compote - Mari.
- ___ 334. Imperial Twins 2 pc. Fruit Bowl and Base - Mari.
- ___ 335. Imperial Unlisted Pretty Panels Stemmed Goblet - Dk. Mari. (scarce item)
- ___ 336. 5" Imperial Tulip and Cane Domed Ruffled Sauce - Dk. Mari. (cute item)
- ___ 337. Pair Imperial Double Scroll Candlesticks - Mari. (pair for one money)
- ___ 338. Pair Imperial Bell Shaped Wide Panel Candlesticks - Mari.
- ___ 339. Imperial Swirl Stemmed Candlesticks - Mari.
- ___ 340. Pair Imperial Miniature Morning Glory Swung Vases - Lt. Mari.
- ___ 341. Imperial Ripple Swung Vase - Mari.
- ___ 342. Imperial Windmill Tumbler - Mari. (nice color)
- ___ 343. Imperial Acanthus Deep Round Bowl - Mari.
- ___ 344. Imperial Pansy Oval Relish Tray - Amber

- ___ 345. Imperial Long Hobstar 2 pc. Fruit Bowl and Base - Mari.
- ___ 346. 7 - 8" Imperial Windmill Deep Round Bowl - Mari.
- ___ 347. Imperial Pansy Oblong Relish Tray - Mari.
- ___ 348. Imperial Lustre Rose Large ftd. Fruit Bowl - Clam.
- ___ 349. Imperial Open Rose Master Berry Bowl - Mari.
- ___ 350. (2) Beaded Purses - Dark (selling choice)
- ___ 351. Depression Era Tree Bark Water Pitcher - Amber (odd color)
- ___ 352. Depression Era Tree Bark Covered Water Pitcher and 6 Tumblers - Mari.
- ___ 353. Imperial Plain Vase in Silver Plate Frame - Mari.
- ___ 354. Mid - Size Jack in the Pulpit Pastel Hat - Red / Gray Flash
- ___ 355. Mid - Size Jack in the Pulpit Hat - Red / Gray Flash
- ___ 356. ICGA 1981 Frolicking Bears Ruffled Spittoon - Aqua Opal.
- ___ 357. ACGA 1983 Seacoast Spittoon - Green
- ___ 358. (2) ACGA 1984 Seacoast Ruffled Spittoon - Red
- ___ 359. ACGA 1987 Morning Glory Pitcher - Green
- ___ 360. ACGA 1978 Beaded Shell Mug - Blue Opal.
- ___ 361. HOACGA 1976 8 pc. Whiskey Set - Red

ART GLASS, ETC.

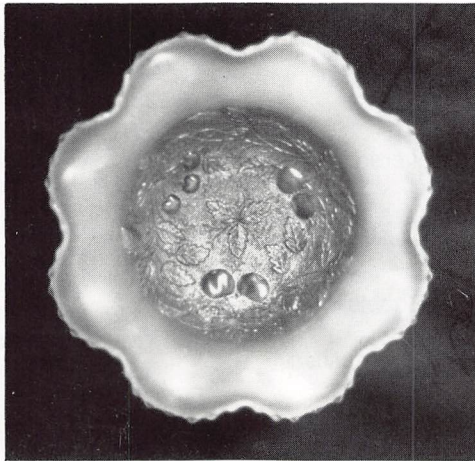
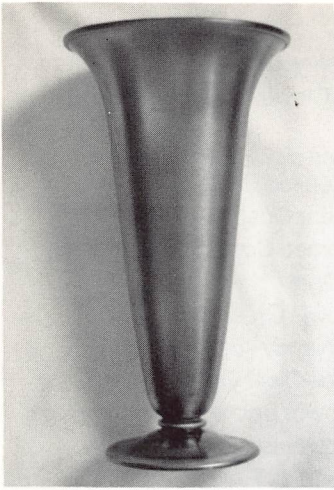
- ___ 1A. **8 1/2" GALLE LOCUST STICK VASE (RARE AND VERY DESIRABLE - UNUSUAL MOTIF)**
- ___ 2A. **7" DEVEZ SCENIC CAMEO VASE (GREAT COLORS AND DETAIL - VERY DESIRABLE ITEM)**
- ___ 3A. **9 3/4 - 10" SIGNED "C. VESSIERE - NANCY" FLORAL CAMEO VASE (NICE BRIGHT COLOR - NICE SIZE)**
- ___ 4A. **10" GOLD AURENE TRUMPET VASE #2909 (RARE AND VERY DESIRABLE; A BEAUT)**
- ___ 5A. **12" BLUE AURENE BULBOUS LAMP (SUPER RARE AND GREAT COLOR (GLASS #3275, BASE #309, ELEC. HOLDER #306)**
- ___ 6A. Quezal 9 3/4" x 5 1/2" Tall Console Bowl (cut down)
- ___ 7A. 7" Steuben Twisted Stem Compote - Amber (signed Block letters; very scarce)
- ___ 8A. 5" x 3" Verre se Soi Cupped Rose Bowl (scarce; nice color)
- ___ 9A. Steuben Verre de Soi Finger Bowl and Underplate (nice color)
- ___ 10A. Steuben Verre de Soi Lamp Shade (nice color)
- ___ 11A. 8" Steuben Verre de Soi Plate (nice color)
- ___ 12A. Hawkes Oil / Vinegar Cruet Decanter with Silver Stopper
- ___ 13A. Hawkes Oil / Vinegar Cruet Decanter with Silver Stopper with out Lid
- ___ 14A. Steuben Stemmed Wine with Green Twisted Stem
- ___ 15A. **FIGURAL LOETZ FLOWER FORM STEMMED BUD VASE - GREE WITH WHITE BASE (SUPER; VERY UNUSUAL AND VERY DESIRABLE - GREAT COLOR)**
- ___ 16A. **7" TANKARD AMBERINA PITCHER (VERY NICE ITEM; PERFECT WITH EXCELLENT COLOR)**
- ___ 17A. Art Glass (gold and gold specks) Finger Bowl and Underplate (unusual colors - a tough item)
- ___ 18A. Art Glass Threaded / Vaseline Opal. Finger Bowl and Underplate (unusual and very desirable)
- ___ 19A. 6 1/4" x 1" Square Pedestaled Mary Gregory Vase with Kid - Black Amy. (a cute item; very unusual)
- ___ 20A. **PINK SATIN HERRINGBONE ENAMELED DECOR. SQUATTY PICKLE CASTOR (VERY RARE; ONE HINGE OF THE HANDLE NEEDS REPAIR BUT GLASS IS GREAT)**
- ___ 21A. Pink Satin Rose Bowl (early)
- ___ 22A. Stevens and Williams Burmese Fairy Lamp Base only

- ___ 23A. Loetz type Squatty Vase - Green Irid.
- ___ 24A. Small Loetz type Squatty Vase
- ___ 25A. **ODD ATTERBURY MILK GLASS COVERED FOX, PAT'D AUG. 6, 1889 (VERY SCARCE ITEM; NICE CONDITION)**
- ___ 26A. Cut Crystal Liquor Decanter and Stopper - Made in Scotland (nice heavy item - fill 'er up!)
- ___ 27A. Cut / Intaglio Stemmed Compote
- ___ 28A. Crystal Etched Bud Vase in Silver Plate Holder (unusual)
- ___ 29A. Cut Glass Covered Powder Jar with Metal Lid
- ___ 30A. Northwood Royal Ivy Miniature Lamp Base - Rubina (very scarce)
- ___ 31A. European Enamelled Cranberry Mid-Size Pitcher (nice color)
- ___ 32A. Fostoria Ice Crystal Covered Ginger Jar - White
- ___ 33A. Green Swirl with Applied Feet (Amber) European Vase
- ___ 34A. **MINTON EWER #24-596 (SCARCE)**
- ___ 35A. Red Japanese Metal / Red Vase - Made in Japan, 1969)
- ___ 36A. Copper Lustre Small Pitcher
- ___ 37A. Etched Frosted / Blue Overlay Large Covered Compote
- ___ 38A. Consolidated Florette Covered Cracker Jar - Orange
- ___ 39A. Consolidated Catalonian Fan Vase - Blue
- ___ 40A. Phoenix Philadendron Vase - Blue Irid.
- ___ 41A. Murano Large Tri-Cornered Controlled Bubble Vase - Amy. (very interesting item)
- ___ 42A. Souvenir Plate - 1904 World's Fair, St. Louis, festival Hall - Goofus / Clear
- ___ 43A. 3 - 4" Sandwich "Egg" Plate
- ___ 44A. English Semi Porcelain Shell Dish
- ___ 45A. **IRISH BELEEK HOLY WATER FONT WITH TWIGS AND SHELL - BLACK MARK (VERY RARE ITEM)**
- ___ 46A. Irish Beleek Saucer - Black Mark with Clovers
- ___ 47A. Irish Beleek Tree Stump Bud Vase - Green Mark
- ___ 48A. (2) Irish Beleek Ewer with Applied Flowers - Green Mark (one damaged)
- ___ 49A. Irish Beleek Figural Swan - 1st Green Mark
- ___ 50A. Irish Beleek Shell Cup and Saucer - Green Mark
- ___ 51A. Irish Beleek Open Sugar or Handleless Cup - Green Mark
- ___ 52A. Irish Beleek Sugar and Creamer - Green Mark
- ___ 53A. Milk Glass Sugar Shaker with Enamelled Floral Decor.
- ___ 54A. McKinley Tray (Clear and Goofus) "It is God's way, His will be done" Born 1843 - Died 1901
- ___ 55A. Fine China Hatpin Holder with Assorted Hatpins (to be sold separately)
- ___ 56A. (2) Late Art Glass Tumblers - Red Irid.
- ___ 57A. (5) Mercury Glass Cup and Saucers (very rare shape; unusual)

PATTERN GLASS

- ___ 1P. Fenton Cactus Flared Vase - Aqua Opal.
- ___ 2P. Vase - Green Opal.
- ___ 3P. Ruffles and Rings 3 ftd. Ruffled Bowl - Clear Opal.
- ___ 4P. Argonaut Shell Ruffled Novelty Dish - Blue Opal.
- ___ 5P. N Lattice and Poinsettia ftd. Ruffled Bowl - Clear Opal.
- ___ 6P. Jewelled Heart 7 pc. Ruffled Berry Set - Clear Opal.
- ___ 7P. Meander ftd. Ruffled Bowl - Green Opal.
- ___ 8P. Meander ftd. Ruffled Bowl - Clear Opal.
- ___ 9P. N Tree Trunk Swung Vase - Clear Opal.
- ___ 10P. Fenton Waterlily and Cattail Lartge Square Ruffled Bowl - Amy. Opal.

- ___ 11P. Fenton Pond Lily Mug - Amy. Opal.
- ___ 12P. Fenton Honeycomb and Clover Ice Cream Shaped Bowl - Green Opal.
- ___ 13P. Experimental Fenton Vase signed W.C. Fenton, 8/10/74 - Tortoise Shell with Applied Handles
- ___ 14P. Square Ruffled Bowl - Clear Opal.
- ___ 15P. Open Opals Flared Stemmed Compote - Blue Opal.
- ___ 16P. Novelty ftd. Vase - Blue Opal.
- ___ 17P. Duncan Miller Oblong Bowl - Green Opal.
- ___ 18P. Kings 500 One Handled Nappy - Blue
- ___ 19P. Fenton Hobnail Fan Vase - Clear Opal.
- ___ 20P. Fenton Hobnail Small Flower Basket - Cranberry Opal.
- ___ 21P. Fenton Hobnail Small Flower Basket - Blue Opal.
- ___ 22P. Fenton "Honeycomb" Handled Flower Basket - Green
- ___ 23P. Westmoreland Master Salt Handled Basket - Depression Green
- ___ 24P. Panelled Handled Flower Basket - Clear Satin
- ___ 25P. Murano Miniature Flower Basket - Red
- ___ 26P. Flat Ruffled Flower Basket - Red with Clear Handle
- ___ 27P. Fenton Inverted Strawberry Handled Flower Basket - Carnival Red
- ___ 28P. Fenton Butterfly Handled Basket - Crystal Red
- ___ 29P. Fenton Large Hobnail Ruffled Bowl - Cranberry Opal.
- ___ 30P. Merchants Bank, Wheeling, WV Flared Console Bowl - Mandarin Red
- ___ 31P. **FENTON HANGING HEART IRID. HANDLED EWER - CUSTARD DECORATED (SCARCE ITEM)**
- ___ 32P. Cranberry ftd. Flared Vase - Pilgrim Glass - Cranberry
- ___ 33P. Fenton Burmese Rose Bowl with Crimped Edge
- ___ 34P. Fenton FAGCA - 1985 Burmese Butterfly Net Mug
- ___ 35P. Fenton Scenic Hand-painted (Connie Ash) Burmese Rose Bowl
- ___ 36P. L G Wright Daisy and Fern Cruet and Stopper - Cranberry Opal.
- ___ 37P. L G Wright Coin Spot Cruet and Stopper - Cranberry Opal.
- ___ 38P. N'wood Inverted Fan and Feather Spittoon Shaped ftd. Novelty - Vaseline Opal.
- ___ 39P. Fenton "Aurene" Type Short Ruffled Vase - Blue Irid.
- ___ 40P. Fenton Hobnail Low Ruffled Bowl - Cranberry Opal.
- ___ 41P. Fenton Hobnail Low Ruffled Bowl - Blue Opal.
- ___ 42P. Fenton Butterfly Tri-Cornered ftd. Berry Bowl, Iridized - Plum Opal.
- ___ 43P. Old Fenton Coin Spot 7 pc. Water Set - Green Opal.
- ___ 44P. (4) Old Fenton Coin Spot Tumblers - Green Opal.
- ___ 45P. Fenton Figural Bird - Red Carnival
- ___ 46P. Fenton Figural Bird - Clear Satin
- ___ 47P. Daisy and Button High Top Shoe - Purple Carnival
- ___ 48P. Goofus Rose and Basketweave Hair Receiver - Decorated
- ___ 49P. Fenton Prayer Rug 2 Handled Bon Bon - Custard
- ___ 50P. Imperial Loganberry Ruffled Top Vase - Milk Glass
- ___ 51P. Fenton Owl on Branch Ring Tree - Amber
- ___ 52P. Fenton Silvercrest Flat Handled Basket
- ___ 53P. Fenton Silvercrest Deep Ruffled Basket
- ___ 54P. Northwood Louis XV Covered Sugar - Pur. Slag (very scarce item)
- ___ 55P. Fenton Carolina Dogwood Ruffled Bowl - Rose.



Burns Auction Service
 109 E. Steuben St.
 Bath, N.Y. 14810

First Class
 U.S. Postage
PAID
 Permit #7
 Hammondsport, NY

