



AUCTION SERVICE

Carnival Glass Auction

Friday & Saturday, March 5 & 6, 1993

Friday: 6:30 p.m., Preview 4:00 p.m. (lots 1 - 145)

Saturday: 9:00 a.m., Preview 8:00 a.m. (lots 146 - end)

at the **Holiday Inn - I-70 East**

6990 E. 21st St. Indianapolis, IN (I-70 at Shadeland Ave., exit 89)
(317) 359-5341



Burns Auction Service

Ind. Lic.# AU 08800478

Tom Burns
109 E. Steuben St.
Bath, New York 14810
(607) 776-7942

Bill Richards
44 Water St.
Poland, Ohio 44514
(216) 757-2001

Bill Richards III
524 Poland Ave.
Struthers, Ohio 44471
(216) 755-2620

We're baaack! Yes we are and what a way to start 1993. We will have our first major auction on this weekend featuring one of the better selections of rarities to be auctioned off in quite some time. We're pleased to be offering, at auction, part of the collection of Ron "Bucky" and Ginny McNeil plus some other consignors. When you look at the list you'll notice some extremely rare items plus a lot of great color and quality being offered. I sure hope you can make the trip.

The Holiday Inn - East Indianapolis will host the event. Be sure to make your reservations now by calling the motel direct at (317) 359-5341 and be sure to mention Burns Auction Service and use the group number - #1374 to guarantee your chance to be present at one of the better auctions in our hobby in quite a while. There are also a number of other adjoining motels in the area including the Budget Inn, which is right next door. Their phone number is (317) 353-9781. There are also a lot of restaurants in the area, so there are plenty of opportunities to take part in the activities. Hope to see you there.

Mail bidders can make their presence known by their participation; just send your bids in to the auctioneers or call us up on the phone. Mail bids are due by Thursday, March 4, 1993.

Be sure to make note of our other auction dates - the next brochure should have more details to make your plans.

Mail Bids honored under the following conditions:

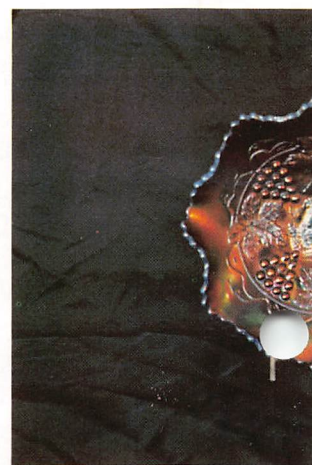
1. No deposit required. Bidders will take full responsibility to honor any and all bids we execute for them. Payment in full plus postage and handling required after notification and before we ship any item to them.
2. Items are bid on in perfect condition with average or above average iridescence OR as listed in the brochures. Bids will not be carried out when damage on an item has been found during the auction.
3. Successful bidders will be notified by collect call from the auctioneer (so be sure to include phone number).
4. Phone inquiries about the glass or any other questions are welcome.
5. All non-successful will receive a result summary in the mail. Results of all bids will be provided.
6. If you have some other person at the auction bidding for you, they must pay for the item before taking it.
7. Mail bids due by Thursday, March 4, 1993.

- | | | | |
|-----------------|--|-------------------|--|
| <u>2750</u> 1. | Crider Figural Bullfrog - Green (new, nice) | <u>45</u> x 2 13. | (2) N Peacock at the Fountain Individual Berry Bowls - Green (selling choice; very rare color) |
| <u>2750</u> 2. | Crider Figural Bullfrog - Mari. (new, nice) | <u>1300</u> 14. | N PEACOCK AT THE FOUNTAIN 7 PC. WATER SET - WHITE (VERY RARE SET; NICE AND FROSTY WITH GREAT IRID.) |
| <u>10</u> 3. | Crider Cactus Tumbler - Mari. / Milk Glass (new, nice) | <u>1750</u> 15. | N PEACOCKS BOWL WITH PIE CRUST EDGE AND RIBBED EXTERIOR - DK. LIME ICE GREEN (SUPER RARE; HAS NICE DARK TINT AND GREAT COLOR) |
| <u>5</u> 4. | European Split Diamond Small Creamer - Mari. | <u>1400</u> 16. | N PEACOCKS BOWL WITH PIE CRUST EDGE AND RIBBED EXTERIOR - ICE BLUE (VERY RARE WITH EXCELLENT COLOR AND IRID.) |
| <u>21500</u> 5. | N ACORN BURR PUNCH BOWL AND BASE - AQUA OPAL. (EXTREMELY, EXTREMELY RARE; ONE OF THE TOP RARITIES IN OUR HOBBY; THIS DOES HAVE A CHIP ON COLLAR BASE) | <u>1000</u> 17. | N PEACOCKS BOWL WITH PIE CRUST EDGE AND RIBBED EXTERIOR - WHITE (VERY RARE SHAPE IN THIS COLOR; NICE IRID.) |
| <u>950</u> 6. | N MEMPHIS FRUIT BOWL AND BASE - GREEN (VERY RARE; SUPER COLOR AND IRID.) | <u>400</u> 18. | N PEACOCKS BOWL WITH PIE CRUST EDGE AND RIBBED EXTERIOR - PUR. (VERY SCARCE; NICE MULTI-COLORED IRID.) |
| <u>285</u> 7. | N Memphis Fruit Bowl and Base - Dk. Mari. (scarce) | <u>400</u> 19. | N PEACOCKS BOWL WITH PIE CRUST EDGE AND RIBBED EXTERIOR - PASTEL MARI. (SCARCE; NICE HIGHLIGHTS) |
| <u>900</u> 8. | N SINGING BIRD HANDLED MUG - AQUA OPAL. (VERY RARE; NICE PASTEL IRID.) | <u>1250</u> 20. | N PEACOCKS STIPPLED PLATE WITH RIBBED EXTERIOR - RENNINGER BLUE (EXTREMELY RARE IN THIS COLOR; SUPER) |
| <u>95</u> 9. | N Singing Bird Stippled Handled Mug - Mari. (very scarce) | <u>450</u> 21. | N PEACOCKS STIPPLED PLATE WITH RIBBED EXTERIOR - MARI. (VERY SCARCE; NICE COLOR AND IRID.) |
| <u>1100</u> 10. | N PEACOCK AT THE FOUNTAIN 6 PC. PUNCH SET - PUR. (VERY SCARCE AND VERY DESIRABLE; GETTING TOUGH) | | |
| <u>650</u> 11. | N PEACOCK AT THE FOUNTAIN FTD. FRUIT BOWL - BLUE (VERY SCARCE; NICE MULTI-COLORED IRID.) | | |
| <u>275</u> 12. | N PEACOCK AT THE FOUNTAIN MASTER BERRY BOWL - GREEN (EXTREMELY RARE COLOR FOR THIS ITEM) | | |

- 1750 22. N PEACOCKS PLATE WITH RIBBED EXTERIOR - ICE BLUE (RARE AND VERY DESIRABLE; NOT A LOT AROUND)
- 400 23. N PEACOCKS PLATE WITH RIBBED EXTERIOR - WHITE (VERY SCARCE; NICE IRID.)
- 600 24. N PEACOCKS PLATE WITH RIBBED EXTERIOR - PUR. (VERY SCARCE; GOOD COLOR AND IRID.)
- 450 25. N PEACOCKS PLATE WITH RIBBED EXTERIOR - PASTEL MARI. (VERY SCARCE; NICE HIGHLIGHTS)
- 325 26. N PEACOCKS PLATE WITH RIBBED EXTERIOR - MARI. (VERY SCARCE; NICE)
- 900 27. N PEACOCKS RUFFLED BOWL WITH RIBBED EXTERIOR - AQUA / BLUE OPAL. (VERY RARE; MORE OF A BLUE BASE GLASS; SUPER)
- 900 28. N PEACOCKS RUFFLED BOWL WITH RIBBED EXTERIOR - AQUA OPAL. (RARE AND DESIRABLE; NICE OPAL. AND IRID.)
- 350 29. N PEACOCKS RUFFLED BOWL WITH RIBBED EXTERIOR - PUR. (VERY SCARCE; NICE COLOR)
- 400 30. N PEACOCKS RUFFLED BOWL WITH RIBBED EXTERIOR - BLUE (VERY DESIRABLE; NICE BLUE HIGHLIGHTS; SUPER)
- 1100 31. N PEACOCK AT THE URN LARGE ICE CREAM BOWL - ICE GREEN (RARE COLOR; VERY FLAT; SUPER DARK COLOR WITH SUPER IRID.)
- 950 32. N PEACOCK AT THE URN LARGE ICE CREAM BOWL - ICE BLUE (RARE WITH NICE MULTI-COLORED IRID.)
- 1200 33. N PEACOCK AT THE URN STIPPLED ALL OVER LARGE ICE CREAM BOWL - BLUE (VERY UNUSUAL AND SCARCE; HAS SWIRL EFFECT)
- 800 34. N PEACOCK AT THE URN INDIVIDUAL ICE CREAM BOWL - GREEN (SUPER RARE LITTLE ITEM WITH EXCELLENT COLOR AND IRID.)
- 2100 35. N POPPY SHOW PLATE - ELEC. BLUE (EXTREMELY DESIRABLE WITH NICE BLUE HIGHLIGHTS)
- 2150 36. N POPPY SHOW PLATE - ICE BLUE (VERY RARE; HAS DEEP COLOR AND SUPER IRID.)
- 1500 37. N POPPY SHOW PLATE - ICE GREEN (VERY RARE; NICE COLOR; POSSIBLE REPAIR TO ONE POPPY)
- 1900 38. N POPPY SHOW PLATE - DK. MARI. (RARE WITH SUPER COLOR AND IRID.)
- 1900 39. N POPPY SHOW PLATE - MARI. (RARE; NICE COLOR AND IRID.)
- 475 40. N POPPY SHOW RUFFLED BOWL - PUR. (VERY SCARCE ITEM; NICE COLOR AND IRID.)
- 350 41. N POPPY SHOW RUFFLED BOWL - PASTEL MARI. (SCARCE; VERY DESIRABLE)
- 850 42. N POPPY RUFFLED RELISH TRAY - AQUA OPAL. (VERY RARE; NICE COLOR AND OPAL.; SUPER BUTTERSCOTCH OVERLAY)
- 150 43. N POPPY RUFFLED RELISH TRAY - WHITE (VERY SCARCE ITEM; NICE IRID.)
- 95 44. N Poppy Ruffled Relish Tray - Ice Blue (very scarce; has chip on base)
- 2600 45. N ROSE SHOW PLATE - EMERALD GREEN (EXTREMELY RARE AND HAS SUPER DESIRABLE IRID.; A FANTASTIC EXAMPLE - HAS A SMALL NICK ON BASE)
- 2100 46. N ROSE SHOW PLATE - ICE BLUE (VERY RARE ITEM; NICE MULTI-COLORED IRID.)
- 1100 47. N ROSE SHOW PLATE - BLUE (VERY RARE; ALMOST ELEC. BLUE; SUPER AND FLAT)
- 425 48. N Rose Show Deep Plate - Pur. (scarce; has small chip on base)
- 975 49. N ROSE SHOW RUFFLED BOWL - AQUA OPAL. (RARE AND DESIRABLE; NICE OPAL. AND IRID.)
- 975
- 1000 50. N ROSE SHOW RUFFLED BOWL - AQUA (VERY RARE ITEM IN THIS COLOR; NICE BASE GLASS AND MARI. OVERLAY WITH NO OPAL.; A KEY COLOR)
- 550 51. N ROSE SHOW RUFFLED BOWL - ELEC. BLUE (RARE IN A BOWL AND HAS SUPER COLOR AND IRID.)
- 650 52. N ROSE SHOW RUFFLED BOWL - PUR. (VERY SCARCE ITEM; SUPER IRID.)
- 600 53. N ROSE SHOW VARIANT RUFFLED BOWL WITH RIBBED EXTERIOR - MARI. (VERY RARE ITEM; NICE MULTI-COLORED IRID.)
- 550 54. N LATTICE AND POINSETTIA FTD. RUFFLED BOWL WITH RIBBED EXTERIOR - ELEC. BLUE (RARE ITEM WITH A SUPER BLUE FINISH)
- 1150* 55. N HEART AND FLOWERS PLATE WITH RIBBED EXTERIOR - ICE BLUE (SUPER RARE AND DESIRABLE ITEM IN THIS PATTERN; NICE)
- 3000 56. N HEART AND FLOWERS PLATE WITH RIBBED EXTERIOR - GREEN (VERY RARE; ONE OF THE BETTER EXAMPLES IN THIS COLOR)
- 700 57. N HEART AND FLOWERS PLATE WITH RIBBED EXTERIOR - PUR. (VERY RARE ITEM; SUPER COLOR AND IRID.)
- 325 58. N HEART AND FLOWERS RUFFLED BOWL WITH RIBBED EXTERIOR - BLUE (RARE VARIATION WITH NARROW BASE; NICE IRID.)
- 325 59. N HEART AND FLOWERS RUFFLED BOWL WITH RIBBED EXTERIOR - PUR. (VERY SCARCE; NICE COLOR AND IRID.)

- 325 60. N HEART AND FLOWERS RUFFLED BOWL WITH RIBBED EXTERIOR - DK. ICE BLUE (SCARCE; SUPER COLOR AND IRID.)
- 300 61. N HEART AND FLOWERS RUFFLED BOWL WITH RIBBED EXTERIOR - WHITE (SCARCE; SUPER COLOR AND IRID.)
- 180 62. N HEART AND FLOWERS RUFFLED BOWL WITH RIBBED EXTERIOR - WHITE (SCARCE; NICE COLOR AND IRID.)
- 180 63. N Heart and Flowers Ruffled Bowl with Ribbed Exterior - Pastel Mari. (very scarce; nice irid.)
- 475 64. N Heart and Flowers Ruffled Bowl with Ribbed Exterior - Dk. Mari. (very scarce; super dark color and irid.)
- 550 65. N HEART AND FLOWERS STEMMED RUFFLED COMPOTE WITH RIBBED EXTERIOR - AQUA OPAL. (VERY RARE WITH SUPER OPAL. AND IRID.)
- 500 66. N HEART AND FLOWERS STEMMED RUFFLED COMPOTE WITH RIBBED EXTERIOR - ELEC. BLUE (SUPER COLOR AND VERY NICE IRID.)
- 250 67. N Heart and Flowers Stemmed Ruffled Compote with Ribbed Exterior - Dk. Mari. (super color and irid.; nice)
- 475 68. N Drapery Rose Bowl - Ice Blue (very rare item; nice; has small check in base)
- 90 69. N Grape Arbor Whimsey Ruffled Hat from Tumbler - White (very scarce; nice)
- 2500 70. N EMBROIDRED MUMS PLATE WITH RIBBED EXTERIOR - ICE GREEN (VERY RARE; SUPER COLOR AND IRID.; ONE OF THE BETTER EXAMPLES)
- 3000 71. N EMBROIDRED MUMS RUFFLED BOWL WITH RIBBED EXTERIOR - LIME GREEN OPAL. (EXTREMELY RARE COLOR; HAS SLAG EFFECT)
- 550 72. N EMBROIDERED MUMS RUFFLED BOWL WITH PLAIN EXTERIOR - LT. ICE BLUE (RARE ITEM; AVERAGE COLOR AND SILVERY / GOLD IRID.)
- 325 73. N EMBROIDERED MUMS RUFFLED BOWL WITH RIBBED EXTERIOR - BLUE (VERY SCARCE; NICE COLOR AND IRID.)
- 650 74. N Dandelion 7 pc. Tankard Water Set - Mari. (scarce set with nice color and irid.)
- 1600 75. 12 3/4" N THIN RIB MID-SIZE SWUNG VASE - AQUA OPAL. (SUPER RARE ITEM; GREAT OPAL. AND COLOR; VERY DESIRABLE)
- 150 76. 12 1/2" N Thin Rib Mid-size Swung Vase - White (very scarce; nice and frosty)
- 200 77. 14" N Tree Trunk Mid-size Swung Vase - Custard / Nutmeg (very scarce; not Carnival)
- 900 78. N CORN VASE - DK. MARI. (VERY RARE; SUPER DARK - TOP TO BOTTOM)
- 230 79. N Corn Vase with Plain Base - White (very scarce; nice color)
- 2750 80. N IVY TOWN PUMP - GREEN (EXTREMELY RARE; NICE COLOR; HAS SMALL SEPARATION ON BASE)
- 600 81. N FRUIT AND FLOWERS STEMMED HANDLED BON BON - LAVENDER (SUPER COLOR; RARE AND THE WAY IT SHOULD BE)
- 375 82. N FRUIT AND FLOWERS STEMMED HANDLED BON BON - AQUA OPAL. (VERY DESIRABLE; NICE OPAL. AND IRID.)
- 150 83. N Fruit and Flowers Stemmed Handled Bon Bon - Green (scarce; nice)
- 75 84. N Fruit and Flowers Stemmed Handled Bon Bon - Pur. (nice color)
- 3500 85. N THREE FRUITS STIPPLED PLATE WITH RIBBED EXTERIOR - AQUA OPAL. (EXTREMELY DESIRABLE; SUPER OPAL. AND IRID.; NICE)
- 1600 86. N THREE FRUITS STIPPLED PLATE WITH RIBBED EXTERIOR - AQUA WITH OPAL. TIPS (VERY NICE ITEM WITH A TOUCH OF OPAL. ON EDGE)
- 2700 87. N THREE FRUITS STIPPLED PLATE WITH RIBBED EXTERIOR - AQUA / TEAL (VERY RARE ITEM; ODD BASE COLOR; NICE IRID.)
- 220 88. N Three Fruits Stippled Plate with Ribbed Exterior - Pur. (very scarce; nice color and irid.)
- 275 89. N Three Fruits Stippled Plate With Ribbed Exterior - Dk. Mari. (super color and irid.; scarce)
- 950 90. N THREE FRUITS STIPPLED RUFFLED BOWL WITH RIBBED EXTERIOR - AQUA OPAL. (RARE; SUPER COLOR AND IRID.; VERY DESIRABLE)
- 950 91. N THREE FRUITS STIPPLED BOWL WITH PIE CRUST EDGE AND RIBBED EXTERIOR - GREEN (VERY RARE ITEM IN THIS COLOR; NICE EXAMPLE)
- 350 92. N Three Fruits Ruffled Bowl with Plain Exterior - Lavender (super color and irid.; very desirable)
- 550 93. N THREE FRUITS MEDALLION SPATULA FTD. RUFFLED BOWL WITH MEANDER EXTERIOR - ICE GREEN (VERY RARE ITEM; NICE COLOR AND IRID.)
- 600 94. N THREE FRUITS MEDALLION SPATULA FTD. RUFFLED BOWL WITH MEANDER EXTERIOR - ICE BLUE (VERY RARE; NICE COLOR AND IRID.)
- 500 95. N THREE FRUITS MEDALLION SPATULA FTD. RUFFLED BOWL WITH MEANDER EXTERIOR - PEARLIZED CUSTARD (EXTREMELY SCARCE AND DESIRABLE; SUPER IRID.)
- 600 96. N THREE FRUITS MEDALLION SPATULA FTD. RUFFLED BOWL WITH MEANDER EXTERIOR - AQUA OPAL. (RARE AND DESIRABLE; NICE IRID. AND OPAL.)

- 225 97. **N NIPPON BOWL WITH PIE CRUST EDGE AND BASKETWEAVE EXTERIOR - ICE BLUE (SCARCE WITH VERY NICE IRID.)**
- 100 98. **N Nippon Bowl with Pie Crust Edge and Basketweave Exterior - White (scarce variation; nice color)**
- 150 99. **N Nippon Bowl with Pie Crust Edge and Basketweave Exterior - Dk. Mari. (super color and very nice)**
- 550 100. **N RASPBERRY WATER PITCHER - ICE GREEN (EXTREMELY RARE ITEM; ONE OF THE RARER PITCHERS)**
- 450 101. **N RASPBERRY TUMBLER - ICE GREEN (VERY RARE WITH NICE COLOR)**
- 1050 102. **N WISHBONE 2 PC. EPERGNE - WHITE (SUPER RARE ITEM; VERY DIFFICULT TO FIND)**
- 675 103. **N WISHBONE FTD. RUFFLED BOWL WITH RUFFLES AND RINGS EXTERIOR - ELEC. BLUE (VERY RARE WITH SUPER BLUE COLOR AND IRID.)**
- 60 104. **N Wishbone ftd. Bowl with Ruffles and Rings Exterior - Mari. (nice)**
- 3750 105. **N GOOD LUCK RUFFLED BOWL WITH RIBBED EXTERIOR - ICE BLUE (EXTREMELY RARE; SUPER COLOR AND IRID.; VERY DESIRABLE)**
- 1350 106. **N GOOD LUCK RUFFLED BOWL WITH RIBBED EXTERIOR - AQUA / TEAL (SUPER RARE COLOR; NICE IRID. AND DESIRABLE)**
- 275 107. **N GOOD LUCK RUFFLED BOWL WITH RIBBED EXTERIOR - AMY. / LAVENDER (SUPER ODD BASE COLOR WITH GREAT IRID.)**
- 170 108. **N Good Luck Ruffled Bowl with Ribbed Exterior - Mari. (scarce; nice)**
- 175 109. **N Good Luck Ruffled Bowl with Basketweave Exterior - Mari. (scarce)**
- 500 110. **N GOOD LUCK BOWL WITH PIE CRUST EDGE AND RIBBED EXTERIOR - ELEC. BLUE (SUPER IRID.; GREAT COLOR AND VERY DESIRABLE)**
- 200 111. **N Good Luck Bowl with Pie Crust Edge and Ribbed Exterior - Dk. Pur. (scarce with super color and irid.)**
- 300 112. **N Good Luck Bowl with Pie Crust Edge and Ribbed Exterior - Pur. (scarce; nice color)**
- 400 113. **N Good Luck Stippled Ruffled Bowl with Ribbed Exterior - Blue (very scarce; nice color and irid.)**
- 150 114. **N Good Luck Stippled Ruffled Bowl with Ribbed Exterior - Mari. (very scarce; nice)**
- 900 115. **N STRAWBERRY PLATE WITH BASKETWEAVE EXTERIOR - MARI. WITH OPAL. TIPS (EXTREMELY RARE COLOR VARIATION; NOT TOO MANY KNOWN)**
- 900 116. **N STRAWBERRY PLATE WITH RIBBED EXTERIOR - DK. MARI. (SUPER COLOR AND EXTREMELY DESIRABLE; GREAT)**
- 900
750 117. **N STRAWBERRY RUFFLED BOWL WITH RIBBED EXTERIOR - MINT ICE GREEN (VERY RARE AND VERY DESIRABLE; GREAT IRID.)**
- 750 118. **N STRAWBERRY RUFFLED BOWL WITH BASKETWEAVE EXTERIOR - HOREHOUND (EXTREMELY RARE BASE COLOR; HARD TO FIND)**
- 65 119. **N Strawberry Ruffled Bowl with Basketweave Exterior - Dk. Mari. (super irid.)**
- 155 120. **N Strawberry Ruffled Bowl with Plain Exterior - Green (extra fine color and super irid.)**
- 35 121. **N Sunflower ftd. Ruffled Bowl with Meander Exterior - Dk. Mari.**
- 260 122. **N BEADED CABLE FTD. ROSE BOWL - AQUA OPAL. (VERY NICE EXAMPLE AND VERY DESIRABLE)**
- 250 123. **N Fine Cut and Roses ftd. Bowl with Fancy Interior - Light Ice Blue (very scarce item)**
- 75 124. **N Fine Cut and Roses ftd. Rose Bowl - Dk. Pur. (nice color)**
- 1100 125. **N GREEK KEY PLATE WITH BASKETWEAVE EXTERIOR - MARI. (A RARE ITEM WITH NICE SATINY, MULTI-COLORED IRID.)**
- 55 126. **N G & C Handled Bon Bon with Basketweave Exterior - Green (super color)**
- 225 127. **N G & C Shot Glass - Pur. (scarce; average irid.)**
- 200 128. **N G & C LARGE DRESSER TRAY - DK. MARI. (SCARCE; NICE DARK COLOR)**
- 400 129. **N G & C TANKARD WATER PITCHER - DK. MARI. (VERY SCARCE AND UNDERPRICED; NICE COLOR)**
- 600 130. **N G & C FTD. FERNERY - DK. MARI. (VERY RARE AND VERY UNDERPRICED; SUPER)**
- 425 131. **N G & C STIPPLED PLATE WITH OLD ROSE ADV. AND RIBBED EXTERIOR - GREEN (VERY SCARCE; GREAT COLOR AND IRID.)**
- 225 132. **N G & C Variant Stippled Ruffled Bowl with Ribbed Exterior - Blue (scarce item; nice color)**
- 115 133. **N G & C VARIANT STIPPLED RUFFLED BOWL WITH RIBBED EXTERIOR - SAPPHIRE BLUE (VERY RARE ITEM IN THIS COLOR; EXCELLENT IRID.)**
- 1700 134. **N G & C VARIANT STIPPLED PLATE WITH RIBBED EXTERIOR - BLUE (VERY RARE AND HAS SUPER COLOR AND IRID.; NICE)**
- 700 135. **N ROUND BUSHEL BASKET - SMOKE (EXTREMELY RARE BASE COLOR; A KEY ITEM)**
- 500 136. **N ROUND BUSHEL BASKET - HOREHOUND (ANOTHER RARE BASE COLOR; NICE AND VERY DESIRABLE)**
- 200 137. **N ROUND BUSHEL BASKET - AQUA OPAL. (SUPER OPAL. AND NICE IRID.)**

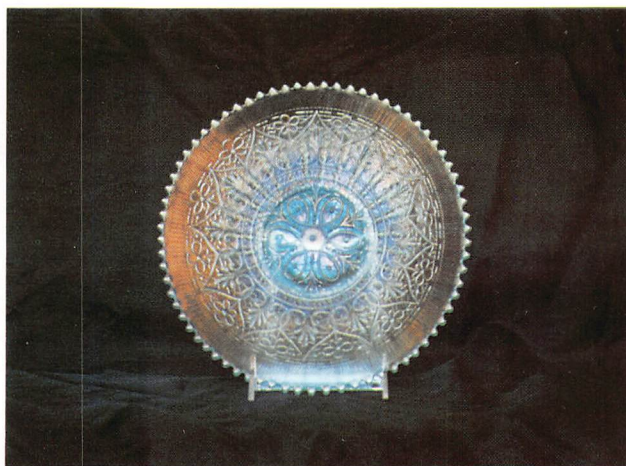
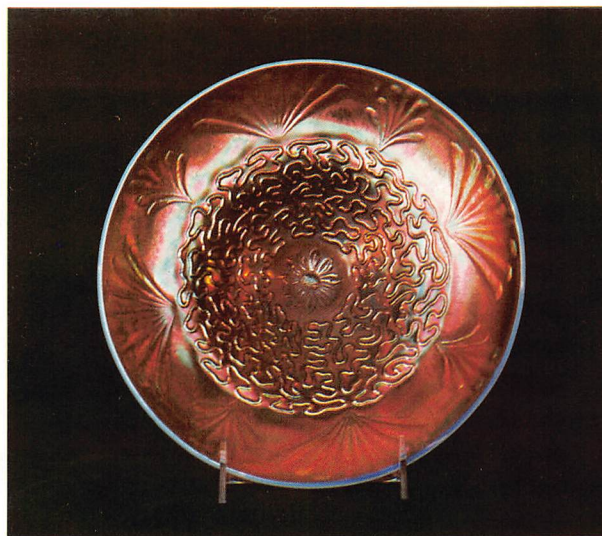


- 550 138. N DANDELION MUG - AQUA OPAL. (RARE; NICE OPAL. AND SUPER IRID.)
- 150 139. N DANDELION MUG - AQUA OPAL. (RARE; AS NICE AS ABOVE)
- 900 140. N DANDELION MUG, KNIGHTS TEMPLAR - ICE GREEN (A SUPER ITEM; VERY RARE; GREAT IRID.)
- 500 141. N DANDELION MUG, KNIGHTS TEMPLAR - DK. MARI. (A VERY SCARCE ITEM WITH GREAT COLOR)
- 200 142. N DANDELION MUG - GREEN (VERY RARE COLOR FOR THIS ITEM; SOME WEAR ON INSIDE)
- 90 143. Cambridge Near Cut Mug, Souvenir Rices Lake, Wis. - Mari. (scarce; nice color)
- 50 144. Dugan Beaded Shell Mug - Pur. (nice color)
- 225 145. DUGAN PASTEL SWAN - PUR. (VERY SCARCE IN THIS COLOR; NICE)

START OF SECOND SESSION

- 30 146. Pastel Swan - Ice Green
- 30 147. Dugan Holly Whirl Handled Nappy - P. Opal.

- 175 148. DUGAN FISHNET 2 PC. RUFFLED EPERGNE - P. OPAL. (SCARCE AND VERY DESIRABLE; NICE COLOR)
- 105 149. Dugan Cherries 6 Ruffled Bowl with Jewelled Heart Exterior - P. Opal.
- 3100 150. 11" DUGAN HEAVY WEB CHOP PLATE - P. OPAL. (EXTREMELY RARE; ONLY 2 KNOWN; A VERY RARE PATTERN IN A SUPER RARE SHAPE)
- 425 151. DUGAN SOUTACHE DOMED FLAT PLATE - P. OPAL. (A RARE PATTERN IN A VERY RARE SHAPE; NICE)
- 90 152. 6" Dugan Jewelled Heart Exterior Crimped Edge Plate - P. Opal. (very scarce)
- 80 153. Dugan Flowers and Frames Tri-cornered Crimped Edge domed Bowl - P. Opal. (odd shape)
- 250 154. FENTON CAROLINE HANDLED FLOWER BASKET - P. OPAL. (VERY SCARCE; ANY OF THESE BASKETS ARE SCARCE)



1500 155. WESTMORELAND FRUIT SALAD 6 PC. PUNCH SET - P. OPAL. (EXTREMELY RARE WITH SUPER OPAL.; A GREAT SET)

850 156. Westmoreland Scales 6 Ruffled Bowl - P. Opal. (very scarce)

45 900 157. Westmoreland Estate Creamer - P. Opal. (scarce)

150 500 158. WESTMORELAND SMOOTH RAYS RUFFLED BOWL - BLUE OPAQUE / MILK GLASS (VERY DIFFICULT TO FIND THIS BASE COLOR)

90 200 159. Dugan Constellation Low Ruffled Stemmed Compote - White (scarce; pretty)

1600 90 160. DUGAN MANY FRUITS 6 PC. PUNCH SET - WHITE (SUPER RARE SET - TOUGH TO FIND; NICE AND FROSTY)

35 50 161. Dugan Grapevine Lattice Jack in the Pulpit Hat from Tumbler - Mari. (scarce shape)

225 162. Dugan Question Mark / Georgia Peach Exterior Stemmed Plate - Mari. (scarce item; nice)

950 163. DUGAN JEWELLED HEART 5 PC. WATER SET - MARI. (VERY RARE SET; ONE TOUGH PITCHER TO FIND)

100 164. 6" Dugan Jewelled Heart Exterior Crimped Plate - Pur. (very scarce; nice)

2800 165. 11 1/2" DUGAN PERSIAN GARDEN CHOP PLATE - AMY. (EXTREMELY RARE ITEM; VERY NICE IRID. AND VERY DESIRABLE)

500 166. DUGAN FORMAL JACK IN THE PULPIT VASE - PUR. (RARE; ALWAYS A VERY DESIRABLE ITEM)

120 167. M'burg Diamond Tumbler - Aqua / Teal (very odd tint; unusual and scarce)

60 168. 5 1/4" M'burg Strawberry Wreath Sauce with Tight Crimped Edge - Mari. (nice radium finish)

90 169. 7 3/4" M'burg Grape Wreath Round Flared Bowl - Green (nice radium finish)

9500 170. 11 1/4" M'BURG PEACOCK AT THE URN CHOP PLATE - AMY. (EXTREMELY RARE; ONE OF THE FINEST PLATES YOU CAN OWN)

185 171. 10 1/4" M'burg Peacock at the Urn Bowl with 3 in 1 Edge - Green (scarce with nice satiny finish)

- 550 172. 10 1/2" M'BURG PEACOCK AT THE URN BOWL WITH 3 IN 1 EDGE - AMY. (RADIUM FINISH; VERY DESIRABLE; HAS BEE - NO BEADING)
- 200 173. 10 1/4" M'burg Peacock at the Urn 6 Ruffled Bowl - Amy. (very scarce; nice satiny finish)
- 145 174. 10 1/4" M'burg Peacock at the Urn 6 Ruffled Bowl - Mari. (scarce color; has bee - no beading)
- 2400 175. 10 1/4" M'BURG PEACOCK AT THE URN 6 RUFFLED BOWL - BLUE (SUPER RARE IN THIS COLOR; NICE BLUE COLOR; HAS BEE - NO BEADING)
- 170 176. 10" M'burg Peacock at the Urn 6 Ruffled Bowl - Amy. (very scarce with nice satiny finish; has bee - no beading)
- 340 177. 10" M'BURG PEACOCK BOWL WITH 3 IN 1 EDGE - GREEN (SUPER ITEM WITH GREAT RADIUM FINISH; A RARE SHAPE)
- 260 178. 10" M'burg Peacock 6 Ruffled Bowl - Green (scarce with great radium finish)
- 110 179. 6" M'burg Peacock 6 Ruffled Sauce - Amy. (radium finish; no bee, no beading)
- 1700 180. M'BURG PEACOCK AT THE URN LARGE RUFFLED COMPOTE - GREEN (VERY RARE; NOT OFTEN FOUND IN THIS COLOR - VERY NICE)
- 325 181. 9 3/4" M'burg Peacock Deep Flared Master Berry Bowl - Green (very scarce; super radium finish)
- 200 182. 9 1/4" M'burg Peacock Deep Flared Master Berry Bowl - Lt. Mari. (very scarce; radium finish)
- 130 * 183. 9 1/2" M'burg Peacock at the Urn Deep Flared Master Berry Bowl - Mari. (very scarce shape; has bee - no beading)
- 105 184. 5 1/2" M'burg Peacock at the Urn Deep Flared Sauce - Amy. (satiny finish; no bee)
- 2900 185. 9" M'BURG PEACOCK AT THE URN "MYSTERY" RUFFLED BOWL - BLUE (SUPER RARE ITEM; EXTREMELY RARE COLOR WITH NICE SATINY FINISH)
- 525 186. 8 1/4" M'BURG PEACOCK AT THE URN "MYSTERY" ICE CREAM SHAPED BOWL - AMY. (RARE SHAPE; GREAT COLOR AND IRID.; SUPER RADIUM FINISH)
- 50 * 187. 5" M'burg Peacock at the Urn "Proof" Deep Flared Sauce - Amy. (radium finish; no beading, no bee)
- 50x2 188. (2) 5 1/2" M'burg Peacock at the Urn "Proof" Deep Flared Sauces - Amy. (radium finish; has urn but no bee; one has base chip, one rough)
- 475 189. 9 1/2" M'burg Fleur de Lei Large Ice Cream Shaped Bowl - Amy. (very scarce and has very desirable radium finish)
- 2700 190. M'BURG TWO EYED ELK RUFFLED BOWL - AMY. (A SUPER RARE ITEM; NOT TOO OFTEN OFFERED; RADIUM FINISH)
- 2900 191. 7 1/2" M'BURG UNLETTERED COURTHOUSE 6 RUFFLED BOWL - AMY. (ANOTHER SUPER RARE ITEM - NOT TOO MANY AROUND; SUPER RADIUM FINISH)
- 650 192. 7 1/2" M'BURG COURTHOUSE LOW 6 RUFFLED BOWL - AMY. (VERY SCARCE; SUPER RADIUM FINISH)
- 75 193. 6 1/2" M'burg Holly Sprig Deep Bowl with Tight Crimped Edge - Green (scarce with super radium finish)
- 105 194. 7 1/4" M'burg Holly Sprig 6 Ruffled Bowl - Amy. (scarce; super radium finish)
- 3000 195. 11" M'BURG HANGING CHERRIES CHOP PLATE - MARI. (EXTREMELY RARE - STILL THE ONLY ONE KNOWN; ONE OF THE RAREST ITEMS IN OUR HOBBY; SUPER SATINY)
- 250 196. 9 1/2" M'BURG HANGING CHERRIES 6 RUFFLED BOWL WITH HOBNAIL EXTERIOR - MARI. (GREAT DARK SATINY FINISH; VERY SCARCE; HAS 2 MANUF. CHECKS IN BASE)
- 100 197. 6 1/2" M'burg Hanging Cherries 6 Ruffled Sauce - Amy. (scarce; nice satiny finish)
- 110 198. 7" M'burg Strawberry Wreath Bowl with 3 in 1 Edge - Amy. (super radium finish)
- 275 199. 9 3/4" M'burg Holly Whirl 6 Ruffled Bowl - Green (super radium finish)
- 950 200. M'BURG MULTI FRUITS AND FLOWERS 6 PC. PUNCH SET - AMY. (VERY RARE SET; SUPER COLOR; HAS SMALL CHIP ON COLLAR BASE OF BOWL)
- 850 201. M'BURG MULTI FRUITS AND FLOWERS STEMMED SHERBET - AMY. (EXTREMELY RARE LITTLE NOVELTY - NOT TOO OFTEN SOLD)
- 525 202. M'BURG BIG FISH BOWL WITH 3 IN 1 EDGE - DK. MARI. (VERY DESIRABLE PATTERN; NICE SATINY FINISH)
- 550 203. M'BURG TROUT AND FLY ICE CREAM SHAPED BOWL - GREEN (VERY SCARCE; SUPER SATINY FINISH; NICE)
- 325 204. M'BURG TROUT AND FLY BOWL WITH 3 IN 1 EDGE - MARI. (SCARCE; NICE SATINY FINISH)
- 2200 205. 9" M'BURG SEAWEED PLATE - AMY. (A SUPER RARE ITEM; SITS UNDER 2" AND HAS GREAT MULTI-COLORED IRID.)
- 245 206. 10" M'burg Seaweed Ruffled Bowl with 3 in 1 Edge - Mari. (very scarce item; nice satiny finish)
- 800 207. 10" M'BURG BLACKBERRY WREATH LARGE RUFFLED BOWL - BLUE (EXTREMELY RARE COLOR FOR THIS ITEM; SUPER SATINY FINISH; PRETTY DARK BASE COLOR)
- 35 208. 6" M'burg Blackberry Wreath 6 Ruffled Sauce - Mari. (cute; radium)

- 47.50 209. Imperial Oval and Round Rose Bowl - Mari. (scarce shape for this item)
- 21.00 210. **IMPERIAL CHRYSANTHEMUM CHOP PLATE, SIGNED NUART - AMBER (ABSOLUTELY SUPER; A VERY RARE COLOR TO FIND THIS IN - YOU DON'T GET THE CHANCE TOO OFTEN)**
- 575 211. **IMPERIAL HOMESTEAD CHOP PLATE, NOT SIGNED - PUR. (VERY RARE; EXCELLENT COLOR AND DETAIL)**
- 200 212. **10" IMPERIAL HEAVY GRAPE CHOP PLATE - AMBER (VERY SCARCE COLOR; NICE IRID.)**
- 210 213. Imperial Embossed Scroll Flat Plate - Pur. (super color and irid.; very flat and nice)
- 220 214. Imperial Embossed Scroll Flat Plate - Pur. (super color and scarce like item above)
- 2250 215. **IMPERIAL HATTIE CHOP PLATE - PUR. (EXTREMELY RARE AND DESIRABLE - IMPERIAL AT ITS BEST; SUPER COLOR AND IRID.)**
- 190 216. 9" Imperial Pansy very low Ruffled Plate - Lt. Amy. (very scarce; very low ruffled and has nice highlights)
- 50 217. Imperial Miniature Ripple Swung Vase - Green (scarce)
- 35 218. Imperial Miniature Ripple Swung Vase - Mari.
- 60 219. Imperial Rococco Vase - Mari. (scarce; irid. from inside)
- 2400 220. **IMPERIAL POPPY SHOW VASE - SMOKE (EXTREMELY RARE; GREAT COLOR; NICE BLUE HIGHLIGHTS)**
- 200 221. **IMPERIAL COLONIAL LADY RUFFLED VASE - PUR. (VERY RARE AND DESIRABLE; SUPER COLOR AND IRID.)**
- 110 222. Imperial Grape Large Ruffled Master Berry Bowl - Pur. (super color and irid.)
- 125 223. Imperial Tiger Lily Water Pitcher - Green (very nice example; scarce)
- 220 224. Imperial Windmill Oval Dresser Tray - Pur. (a rare item that is a bit underpriced)
- 225 225. **IMPERIAL WINDMILL LARGE SIZE WATER PITCHER - BLUE (EXTREMELY RARE; ONLY ONE I'VE HEARD OF IN THIS COLOR - JUST AS BLUE AS IMPERIAL CAN GET)**
- 850 226. **IMPERIAL WINDMILL WATER PITCHER - PUR. (VERY RARE ITEM; NOT OFTEN SOLD)**
- 120 227. Imperial Waffle Block Handled Flower Basket - Teal (very scarce color)
- 225 228. Small Table Lamp with Fostoria Etched Shade - Ice Blue (unusual; a cute item, different)
- 200 229. Odd Figural Owl on a Stump Paperweight - Yellow / Mari. (an odd item; don't remember seeing another)
- 525 230. **FENTON KITTENS 2 SIDED BANANA DISH - BLUE (VERY RARE WITH NICE DARK COLOR - TOUGH!)**
- 410 231. **FENTON KITTENS RUFFLED TOOTHPICK HOLDER - BLUE (RARE WITH ODD RUFFLE; VERY DESIRABLE)**
- 250 232. **FENTON KITTENS CUP AND SAUCER - MARI. (VERY SCARCE; NICE COLOR AND DETAIL)**
- 130 233. Fenton Kittens Ruffled Toothpick Holder - Mari. (very scarce; nice color)
- 120 234. Fenton Kittens 4 sided Bowl - Mari. (very scarce; nice)
- 110 235. Fenton Kittens 4 sided Bowl - Mari. (very scarce; nice)
- 65 236. Fenton Wreath of Roses Stemmed Ruffled Compote - Green
- 65 237. 8 1/2 - 9" Fenton Heart and Vine Odd 6 Ruffled Bowl - Green (odd shape; super color)
- 65 238. 8" Fenton Heart and Vine Bowl with Tight Crimped Edge - Blue (scarce)
- 55 239. 8 3/4" Fenton Heart and Vine Bowl with Deep 3 in 1 Edge - Dk. Mari. (odd shape)
- 1550 240. **FENTON 1911 ATLANTIC CITY ELKS BELL - BLUE (EXTREMELY RARE ITEM; NICE DETAIL AND VERY DESIRABLE)**
- 2300 241. **FENTON GARDEN MUMS PLATE WITH EXCHANGE BANK - GLENDIVE, MONT. ADVERTISING - AMY. (EXTREMELY RARE ITEM; VERY NICE DETAIL - A TOUGH ONE)**
- 65 242. 7 1/2" Fenton Acorn Ruffled Bowl - Dk. Amber (very scarce color)
- 95 243. 7 1/2" Fenton Acorn Ruffled Bowl - Aqua (very scarce; a nice example)
- 80 244. 7 1/2" Fenton Acorn Ruffled Bowl - Blue
- 2000 245. **8 1/2" FENTON PEACOCK AT THE URN RUFFLED BOWL - MARI. / MOONSTONE (EXTREMELY DESIRABLE; SUPER MARI. OVERLAY; VERY RARE)**
- 300 246. **9" FENTON PEACOCK AT THE URN PLATE - BLUE (SUPER COLOR AND DETAIL; VERY SCARCE)**
- 325 247. 8 3/4" Fenton Peacock at the Urn Bowl with 3 in 1 Edge - Green (very scarce; odd shape; nice)
- 140 248. Fenton Peacock at the Urn Stemmed Ruffled Compote - Aqua / Mari. (very scarce color)
- 80 249. 10 1/2" Fenton Stag and Holly Ball ftd. Ice Cream Shaped Bowl - Mari. (super color)
- 230 250. **9" FENTON STAG AND HOLLY BALL FTD. DEEP RUFFLED BOWL - AQUA / MARI. (VERY SCARCE COLOR; NICE SHAPE)**
- 300 251. **9" FENTON THISTLE 8 RUFFLED BOWL - AQUA / MARI. (VERY RARE COLOR FOR THIS ITEM; SUPER)**
- 110 252. Fenton Persian Medallion 2 Handled Bon Bon - Aqua / Mari. (very scarce color)
- 70 253. 6" Fenton Persian Medallion Plate - Mari. (nice color)
- 160 254. **FENTON PERSIAN MEDALLION LARGE STEMMED RUFFLED COMPOTE - GREEN (VERY RARE COLOR IN THIS PATTERN)**
- 180 255. **9" FENTON PERSIAN MEDALLION PLATE - BLUE (VERY SCARCE; ONE OF THE BETTER EXAMPLES; HAS TINY NICK ON PATTERN)**
- 75 256. Fenton Blackberry 2 Row Open Edge Low Ruffled Hat - Powder Blue / Mari. (odd color; scarce)

- 140 257. 7" Fenton Large Size 2 Row Open Edge Ice Cream Shaped Bowl - Ice Green (very scarce; nice and frosty)
- 195 258. 5 3/4" Fenton Large Size 2 Row Open Edge Square Ruffled Bowl - Ice Green (very scarce; nice and frosty)
- 300 259. **FENTON 2 ROW OPEN EDGE JACK IN THE PULPIT HAT - RED (NICE COLOR AND GETTING TOUGH)**
- 2/25 260. **FENTON 2 ROW OPEN EDGE JACK IN THE PULPIT HAT - FOREST GREEN WITH OPAL. SWIRL BASE (VERY RARE COLOR AND REALLY UNUSUAL)**
- 85 261. Fenton Lotus and Grape 2 Handled Bon Bon - Green (scarce color)
- 135 262. Fenton Horsehead Medallion ftd. Rose Bowl - Dk. Mari. (scarce with nice color)
- 250 263. **6 1/2" FENTON LIONS DEEP ROUND BOWL - BLUE (VERY SCARCE WITH NICE COLOR AND DETAIL)**
- 75 264. 7" Fenton Lions Deep Round Bowl - Mari. (scarce; nice color)
- 1100 265. **FENTON PETER RABBIT RUFFLED BOWL - MARI. (ONE OF THE MORE POPULAR PATTERNS; RARE WITH NICE COLOR AND DETAIL)**
- 550 266. **9" FENTON PEACOCK AND GRAPE FLAT PLATE - DK. MARI. (SUPER COLOR AND DETAIL; A VERY NICE EXAMPLE)**
- 425 267. **9" FENTON PEACOCK AND GRAPE 8 RUFFLED BOWL - MARI. / MOONSTONE (VERY SCARCE; NICE MARI. OVERLAY; VERY DESIRABLE)**
- 180 268. Fenton Concord Grape Bowl with 3 in 1 Edge - Green (super color and very scarce; nice irid.)
- 60 269. 7 1/2" Fenton Concord Grape Ice Cream Shaped Bowl - Dk. Mari. (scarce color and very desirable)
- 975 270. **FENTON MILADY TANKARD WATER PITCHER - BLUE (EXTREMELY RARE ITEM WITH NICE MULTI-COLORED IRID. AND FINISH)**
- 925 271. **FENTON PANELLED DANDELION 7 PC. TANKARD WATER SET - AMY. (VERY RARE SET; NICE COLOR AND DETAIL)**
- 35 272. 6" Fenton Sailboats Square Bowl - Dk. Mari. (very scarce shape)
- 275 273. **9" FENTON ORANGE TREE PLATE - BLUE (VERY SCARCE; NICE COLOR AND DETAIL)**
- 110 274. Fenton Orange Tree 6 Ruffled Bowl - Blue (super color and irid.)
- 1800 275. **8 1/2" FENTON G & C BALL FTD. RUFFLED BOWL - COBALT BLUE OPAL. (EXTREMELY RARE ITEM; ONE OF THE BETTER EXAMPLES)**
- 1000 276. **9" FENTON VINTAGE GRAPE 6 RUFFLED BOWL - AQUA OPAL. (VERY RARE AND DESIRABLE; SUPER COLOR)**
- 325 277. **10 1/2" FENTON CHRYSANTHEMUM LARGE FTD. RUFFLED BOWL - GREEN (EXTREMELY RARE BASE GLASS COLOR FOR THIS ITEM)**
- 110 278. **FENTON FLOWERS FTD. CENTERPIECE SHAPED WHIMSEY - AMY. (VERY RARE SHAPE - MADE FROM A ROSE BOWL INTO A CENTERPIECE SHAPE)**
- 580 279. **6" FENTON STIPPLED RAYS ICE CREAM SHAPED SAUCE - RED (SUPER COLOR AND IRID.; VERY DESIRABLE; NICE RED)**
- 2100 280. **9" FENTON DRAGON AND LOTUS 8 RUFFLED BOWL - AQUA OPAL. (EXTREMELY DESIRABLE; SUPER EXAMPLE; GREAT COLOR)**
- 650 281. **9" FENTON DRAGON AND LOTUS 8 RUFFLED BOWL - MARI. / MOONSTONE (VERY RARE; A SUPER NICE EXAMPLE)**
- 140 282. **8 1/2 - 9" FENTON DRAGON AND LOTUS 8 RUFFLED BOWL - P. OPAL. (VERY SCARCE; MAY LACK A BIT OF COLOR IN THE CENTER)**
- 80 283. 8 1/2" Fenton Dragon and Lotus 8 Ruffled Bowl - Blue (nice color)
- 85 284. Fenton Dragon and Lotus Bowl with 3 in 1 Edge - Green (super irid.; really nice)
- 250 285. **9 1/2" FENTON DRAGON AND STRAWBERRY FTD. RUFFLED BOWL - MARI. (VERY SCARCE ITEM; NICE COLOR AND IRID.)**
- 750 286. **9" FENTON HOLLY PLATE - AMY. (VERY RARE COLOR; SUPER COLOR AND IRID.)**
- 175 287. **9" FENTON HOLLY PLATE - MARI. (VERY SCARCE; SUPER COLOR)**
- 60 288. Fenton Holly Bowl with 3 in 1 Edge - Green (super color and irid.)
- 2700 289. Fenton Holly Ice Cream Shaped Bowl - Clam. (super irid.)
- 70 290. Fenton Holly 8 Ruffled Bowl - Blue
- 85 291. Fenton Holly Stemmed Ruffled Compote Irid. by Crider - Ice Green (really nice; old pc. irid. by Crider)
- 85 292. Fenton Butterfly and Berry ftd. Master Berry Bowl - Amy. (very scarce color for this item)
- 90 293. Fenton Two Flowers Spatula ftd. Rose Bowl - Mari. (scarce item)
- 45 294. Fenton Lotus and Poinsettia ftd. Ruffled Sauce - Mari.
- 80 295. U.S. Glass Estate 3 ftd. Pin Nappy - Smoke / Flash (scarce novelty)
- 25 296. Unusual Wide Panelled Stemmed Goblet, Souvenir Spooner, Minn. - Lt. Mari. (nice detail, scarce)
- 25 297. Stemmed Flared Vase, Souvenir Spring Valley, Wis. - Lt. Mari. (nice detail; scarce)
- 75 298. Unusual Czech Covered Pin Dish with Deco Floral Motif - Lt. Mari. (odd item)
- 25 299. Imperial Ribbed Flute Rose Bowl, Signed with Iron Cross - Mari.
- 840 300. **SURPRISE! Your guess is as good as mine!**
Zipper loop de mo

