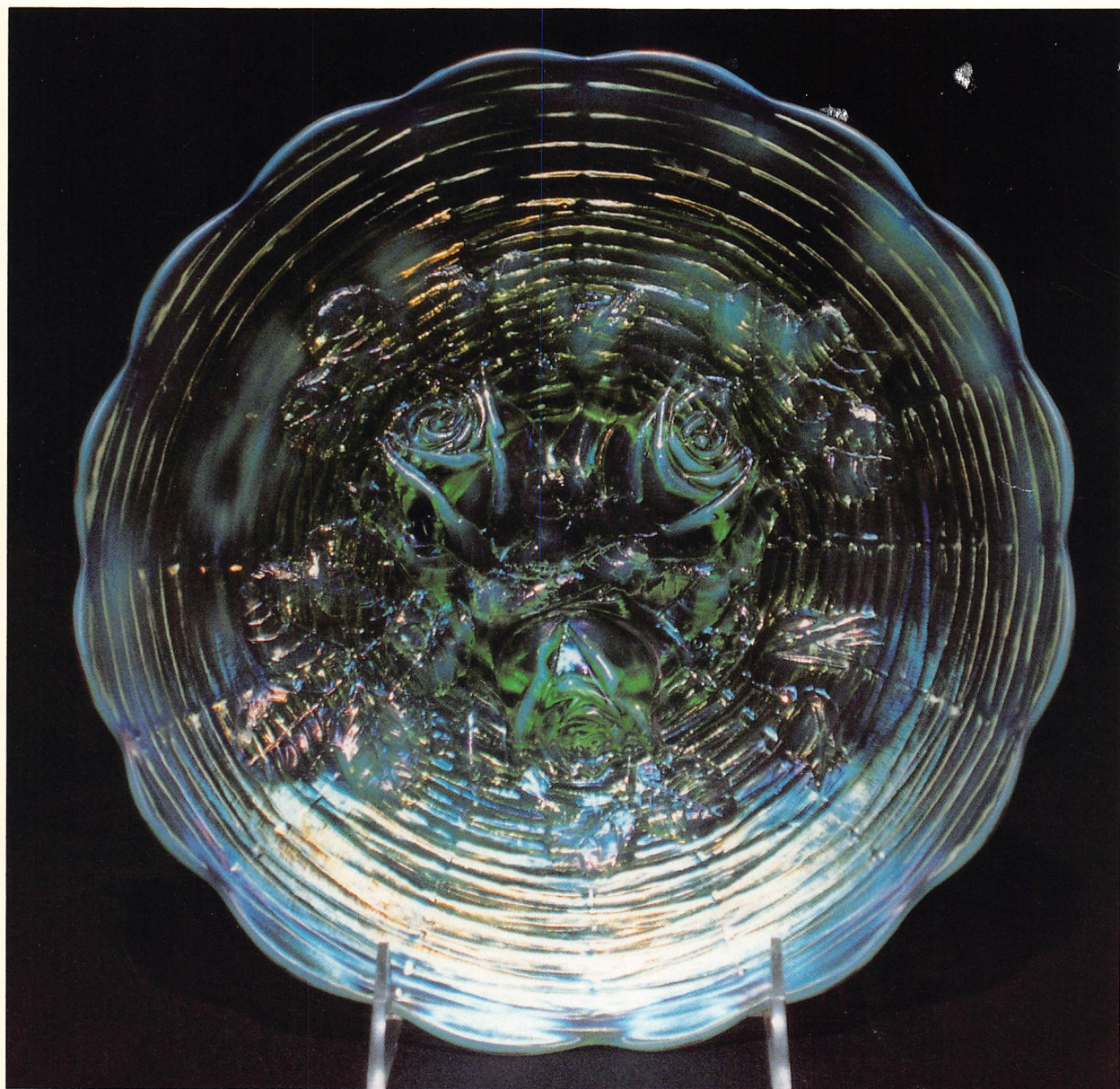


AUCTION



Carnival Glass & Other Antiques



Fri. & Sat., April 6 & 7, 1990

Harley Hotel (I-70 West at Earth City Exit)
ST. LOUIS, MISSOURI

AUCTION



Carnival Glass & Other Antiques

Friday, April 6, 1990 - 6:00 p.m.
Saturday, April 7, 1990 - 9:30 a.m.

Harley Hotel (I-70 West at Earth City Exit)
ST. LOUIS, MISSOURI

Owners: Ivan Mitchell Estate and Mr. and Mrs. Sherman Kell

The name of Ivan Mitchell is familiar to Carnival collectors nationwide. The Mitchells attended many Carnival Glass conventions and auctions after Ivan became attracted to the beautiful glassware. Ivan studied everything he could find about Carnival Glass and bought only the best — in this auction you will find some of the choicest Carnival Glass you've ever seen! Absolutely top-quality all the way!!

Along with the Ivan Mitchell collection, we will be selling Carnival Glass and other antiques belonging to the Mitchells' neighbors, Mr. and Mrs. Sherman Kell.

This large auction covers the gamut of antiques, selling fine Carnival Glass, Art Glass and other glassware, porcelain, coins, guns, clocks and watches, and more — truly something for everyone.

PREVIEW: Friday, 3:00 p.m.

TERMS: Cash. Checks accepted if previously approved.

MOTEL RESERVATIONS: Call the Harley Hotel directly at 314-291-6800. The toll-free number is 1-800-321-2323. Mention the Woody Auction for special room rates.

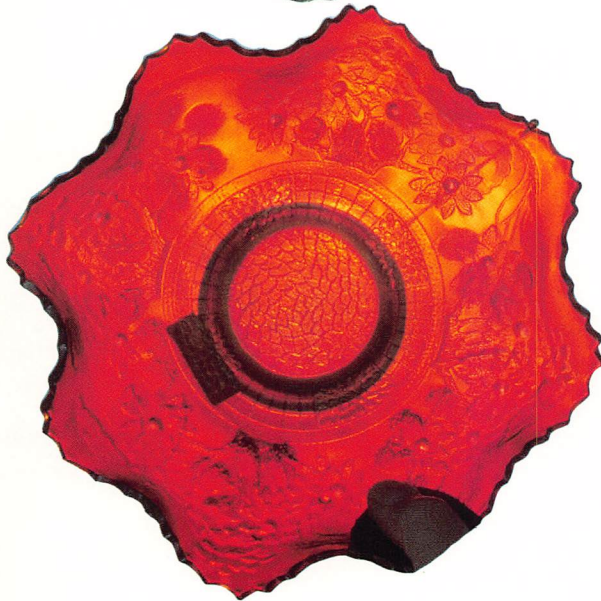
WRITE-IN BIDS: We must have a written statement of the maximum amount you wish to bid on an item. Your bid will be entered just as if you are present and bidding. It is possible that you might purchase an item for less than your bid. If your bid is successful, you will be notified and the item sent just as soon as the amount due is received. **Please note** - there is a 5% handling charge which will be added to the selling price of all write-in bids. This in addition to the cost of postage and insurance.

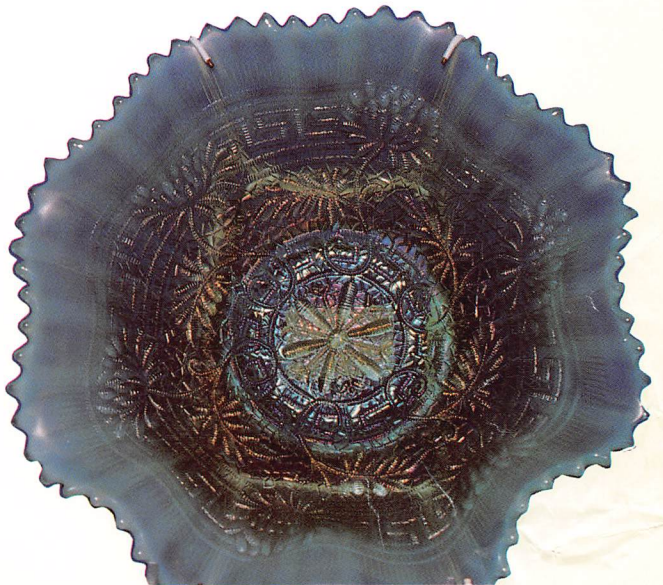
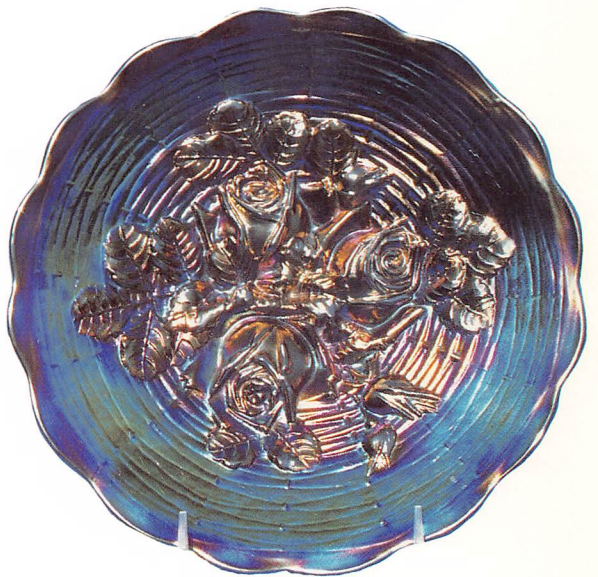
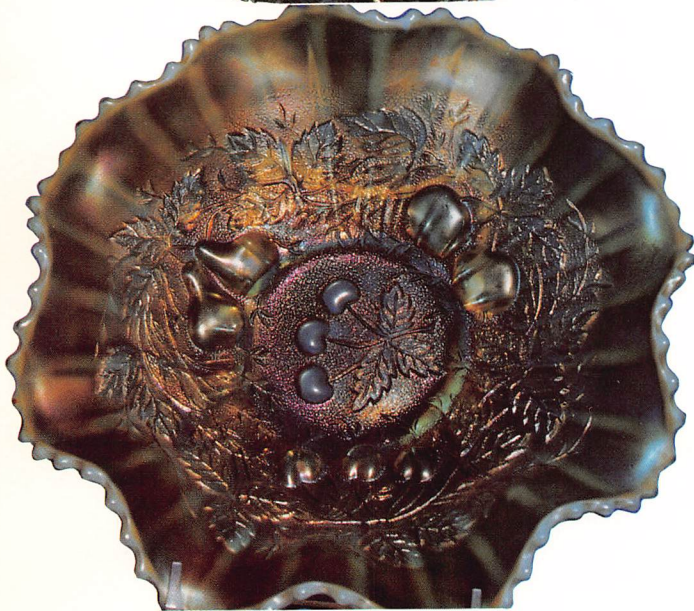
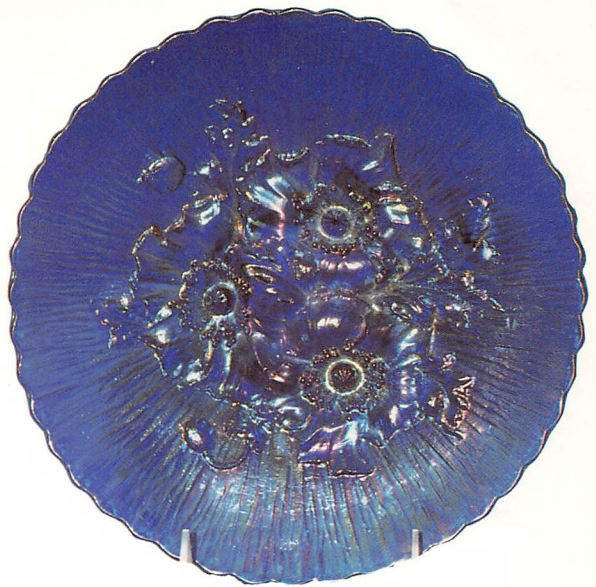


CARNIVAL GLASS:

Selling Saturday beginning at 9:30 a.m.

303. Swan powder box - marigold
304. Scottie powder box - marigold
305. Leaf Tiers nappy - marigold
306. Pond Lily bon-bon - marigold
307. Stork & Rushes mug - marigold
308. Wreath of Roses bon-bon - green
309. Peacock Tail sauce - amethyst
310. Question Mark bon-bon - purple
311. Fenton's Flowers rosebowl - marigold
312. Three Fruits bon-bon - green
313. Imperial Grape plate - purple
314. Fieldflower pitcher and one tumbler - purple
315. Octagon milk pitcher - purple
316. Embossed Scroll plate - green
317. Feather & Heart pitcher, six tumblers - marigold
318. Stippled Three Fruits plate - aqua
319. Grape & Cable pitcher and six tumblers - marigold
320. Raspberry milk pitcher - purple
321. Rose Show Variant plate - blue
322. Raspberry pitcher, six tumblers - **excellent purple!**
323. **Rare Thistle plate** - green
324. Raspberry milk pitcher - green
325. Raspberry pitcher and six tumblers - green
326. Rose Show plate - marigold
327. Raspberry pitcher and six tumblers - marigold
328. Strawberry plate, Basketweave exterior - green
329. Raspberry milk pitcher - marigold
330. Beaded Shell pitcher and six tumblers - marigold
331. Fenton's Peacock at Urn plate - white
332. Millersburg Diamond pitcher and six tumblers - amethyst
333. Heavy Grape chop plate - purple
334. Grape & Cable pitcher and six tumblers - marigold
335. Millersburg Hanging Cherry ice cream bowl - gn
336. **Excellent** Fenton's Autumn Acorn plate - green
337. Floral & Grape tankard and six tumblers - cobalt blue
338. **Extremely rare beautiful Rose Show plate - aqua-green opalescent**
339. Grape & Cable pitcher and six tumblers - purple
340. Millersburg Hanging Cherry ice cream bowl - amy
341. Heart & Vine plate - amethyst
342. Imperial Grape pitcher and five tumblers - green
343. Strawberry plate, Basketweave exterior - purple
344. Grape & Gothic Arches water set - light marigold
345. Millersburg Peacock at the Urn ice cream bowl - amethyst
346. **Coral** plate - marigold
347. Peacock at Fountain pitcher and six tumblers - cobalt blue
348. Open Rose plate - green
349. Maple Leaf pitcher and six tumblers - purple
350. Northwood Peacock at the Urn ice cream bowl - marigold
351. **Excellent** Peacock on Fence plate, Rayed exterior - cobalt
352. Butterfly & Plume pitcher and six tumblers - **blue**
353. Three Fruits plate - purple
354. Butterfly & Plume pitcher and six tumblers - green
355. Large Stag & Holly footed bowl, ice cream-shape - marigold
356. Peacock on Fence plate - **lavender**
357. Blueberry pitcher and three tumblers - blue
358. Northwood Grape & Cable plate, Stippled - green
359. Peacock at Fountain pitcher and six tumblers - marigold
360. Northwood Peacock at Urn ice cream bowl - **ice green**
361. Leaf Chain plate - emerald green
362. Soda Gold pitcher and five tumblers - **super** smoke color
363. Rose Show plate - purple
364. Millersburg Peacock at the Urn ice cream bowl - amethyst
365. Octagon pitcher and two tumblers - marigold
366. **Concord** plate - amethyst
367. Windmill pitcher and one tumbler - green
368. **Orange Tree bowl, ruffled - excellent red!**
369. Northwood Peacock at the Urn ice cream bowl - Custard, not iridized
370. Stork & Rushes pitcher, six tumblers - marigold
371. Northwood Grape & Cable plate - amethyst
372. Butterfly & Berry pitcher, six tumblers - marigold
373. Northwood Grape & Cable plate, Basketweave exterior - purple
374. Wreathed Cherry pitcher and one tumbler - purple
375. Fenton's Flowers rosebowl - blue
376. Fanciful ruffled plate - white
377. Apple pitcher and six tumblers - marigold
378. "Spector's Department Store" advertising plate - marigold
379. Northwood Peacock at the Fountain fruit bowl - marigold
380. Bulbous Orange Tree pitcher, one tumbler - blue
381. Heart & Vine plate - blue
382. Panelled Dandelion tankard, six tumblers - blue
383. **Vintage 8" bowl, ice cream-shape - excellent red!**
384. Northwood Peacock at the Fountain fruit bowl - purple
385. Grape Arbor tankard and one tumbler - marigold
386. 11" Chrysanthemum & Windmill footed bowl - emerald green
387. Lattice & Daisy tankard, four tumblers - marigold
388. **Wishbone & Spades chop plate - purple**
389. **Large Stag & Holly rosebowl - marigold**
390. Lattice & Grape tankard and six tumblers - blue
391. **NuArt Homestead plate - green**
392. Imperial Grape wine set - purple
393. **Rare Northwood Peacock at Urn chop plate - purple**
394. Imperial Grape wine set - green
395. Large Two Flowers rosebowl - marigold
396. Peacock at Urn compote - cobalt blue
397. Imperial Grape wine set - marigold
398. **Fenton's Peacock at Urn compote - deep red with excellent iridescence and color**
399. Fenton's Flowers rosebowl - amethyst
400. Northwood Peacock at Urn ice cream set, 7-piece - **ice blue**
401. Northwood Grape & Cable sweetmeat - purple
402. Northwood Peacock at the Urn ice cream set, 7-piece - purple
403. Stippled Three Fruits bowl - green
404. Grape & Cable fruit bowl, Persian Medallion interior - cobalt blue





405. Millersburg Hanging Cherries 6" ice cream bowl - marigold
406. Northwood Grape & Cable covered compote - purple
407. Peacock at the Fountain punch set, 8-piece - marigold
408. Loganberry vase - green
409. **Trout & Fly** bowl, ruffled - light marigold
410. Vintage bowl, candy ribbon-edge - amethyst
411. Grape & Cable tobacco jar - purple
412. **Trout & Fly bowl, square - amethyst**
413. **Persian Medallion 8" bowl, ruffled - excellent red!**
414. Wishbone bowl - marigold
415. Wild Strawberry 10" bowl, Basketweave exterior - green
416. Windmill milk pitcher - purple
417. Pony bowl - marigold
418. Star Medallion milk pitcher - smoky
419. Apple Blossom Twig bowl - peach opalescent
420. Grape & Cable bowl - purple
421. Poinsettia milk pitcher - smoky
422. Fanciful bowl - purple
423. Windmill milk pitcher - marigold
424. Millersburg Zig-Zag bowl, ruffled - marigold
425. Millersburg Zig-Zag bowl, flared - green
426. **Lustre Rose 11" footed bowl - red**
427. Millersburg Rosaline bowl - amethyst
428. Leaf Swirl footed vase - teal green
429. Millersburg Zig-Zag bowl, square - amethyst
430. Leaf & Beads rosebowl - green
431. **Butterfly & Berry fernery - excellent blue**
432. Carolina Dogwood bowl - blue opalescent
433. **Horse Medallion flared bowl - choice red!!**
434. Coral bowl - marigold
435. **Brooklyn Bridge bowl, 10 ruffles - marigold**
436. Iris goblet - amethyst
437. Heart & Horseshoe bowl (Fenton's Good Luck) - marigold
438. Northwood Grape Leaves bowl - purple
439. Millersburg Fleur-de-Lys bowl - marigold
440. Millersburg Fleur-de-Lys bowl - amethyst
441. 10" Strawberry bowl - purple
442. Millersburg Primrose bowl - marigold
443. **Rose Tree 10" bowl - cobalt blue, (ONLY FIVE KNOWN!)**
444. Millersburg Seaweed bowl, candy ribbon-edge - marigold
445. Millersburg Whirling Leaves bowl - marigold, radium finish
446. Millersburg Fleur-de-Lys bowl, candy ribbon-edge - green
447. Millersburg Whirling Leaves bowl - marigold, Satin finish
448. Cherry Chain 10" bowl, Orange Tree exterior, candy ribbon-edge - teal blue
449. Millersburg Peacock at the Urn bowl, ruffled - amethyst with radium finish, **gorgeous!**
450. Dugan's Heavy Grape bowl - peach opalescent
451. Millersburg Rays & Ribbons bowl - amethyst
452. Cherry Circles 10" bowl, candy ribbon-edge - marigold with amber
453. Millersburg Whirling Leaves bowl - green
454. Millersburg Peacock at Urn bowl, ruffled - green
455. Large Orange Tree mug - blue
456. Millersburg Whirling Leaves bowl - amethyst
457. **Super Poppy Show plate - cobalt blue**
458. Vintage large ice cream-shape bowl - cobalt blue
459. Orange Tree mug, large - blue
460. Orange Tree mug, small - marigold
461. Millersburg Primrose bowl - amethyst
462. Fisherman's mug - purple
463. Millersburg Zig-Zag bowl, candy ribbon-edge - amethyst
464. Banded Vintage mug - marigold
465. Beaded Shell mug - blue
466. Millersburg Seaweed 11" bowl, candy ribbon-edge - green
467. Beaded Shell mug - purple
468. Birds & Cherries 10" ruffled bowl - cobalt blue
469. Beaded Shell mug - marigold
470. Robin mug - marigold
471. Millersburg Fleur-de-Lys bowl, ice cream-shape - amethyst
472. Orange Tree loving cup - blue
473. **Vintage 9" bowl, ruffled - red**
474. Stork & Rushes mug - amethyst
475. Stork & Rushes mug - marigold
476. Cosmos 4-piece table set - marigold
477. Singing Birds mugs (2) - purple
478. Pansy bowl, ruffled - amethyst
479. Singing Birds mug - marigold
480. Singing Birds mug - green
481. Round-up bowl, ruffled - peach opalescent
482. Singing Birds mugs (2) - blue
483. Fanciful plate, turned-up rim - amethyst
484. Northwood Dandelion mug - purple
485. Orange Tree mug - Vaseline with marigold overlay
486. **Birmingham Age Herald plate - amethyst**
487. Captive Rose plate - green
488. Peacock on Fence plate - ice green
489. Captive Rose plate - blue
490. Persian Medallion large ice cream bowl and sauce - white
491. Fenton's Peacock at Urn plate - blue
492. Three Fruits plate - green
493. Grape & Cable Stippled plate - teal green
494. Orange Tree plate - marigold
495. Holly plate - clambroth
496. Peacock on Fence plate, ribbed exterior - cobalt blue
497. Open Rose plate - green
498. Posy & Pods plate - purple
499. Captive Rose plate - blue
500. Holly plate - white
501. Holly plate - blue
502. Holly plate - marigold
503. Persian Medallion chop plate - blue
504. Acanthus plate - marigold
505. NuArt **Homestead** plate - amber, signed
506. Northwood Grape & Cable table set, 4-piece - purple
507. Stippled Three Fruits plate - purple
508. Singing Birds table set, 4-piece - green
509. Stippled Three Fruits plate - blue
510. Ruffled Ribbon Tie plate - blue
511. Peacock at Fountain table set, 4-piece - purple
512. Embossed Scroll plate - purple

513. Wine & Roses pitcher and six goblets - marigold
514. Stippled Peacock on Fence plate - marigold
515. Stippled Peacock on Fence plate - blue
516. Apple pitcher and six tumblers - blue
517. Peacock on Fence plate - purple
518. Northwood Grape & Cable pitcher and six tumblers - green
519. Strawberry plate - purple
520. Palm Beach pitcher and two tumblers - marigold
521. Strawberry plate - purple
522. Heavy Grape 8" plate - green
523. Singing Birds pitcher and six tumblers - green
524. Good Luck plate - purple
525. Ten Mums pitcher and six tumblers - blue
526. Horse Medallion plate - marigold
527. Open Rose plates (2) - green
528. Inverted Thistle pitcher, four tumblers - amethyst
529. Open Rose plate - amber
530. Windmill pitcher and four tumblers - purple
531. Open Rose plate - marigold
532. Round-up ruffled plate - peach opalescent, white tips
533. Floral & Grape pitcher and six tumblers - amethyst
534. Round-up ice cream-shaped plate - lavender
535. Imperial Grape pitcher and six tumblers - purple
536. Apple Blossom Twig plate - blue
537. Millersburg **Nesting Swan** bowl - amethyst, radium finish
538. Fluffy Peacock pitcher and six tumblers - amethyst
539. Millersburg **Nesting Swan** bowl - marigold, radium finish
540. Panelled Dandelion tankard, six tumblers - green
541. Millersburg Nesting Swan bowl - marigold, Satin finish
542. Millersburg Nesting Swan bowl - amber
543. **Fashion** pitcher and four tumblers - purple
544. Prayer Rug nappy - iridized Custard
545. Butterfly & Plume pitcher, six tumblers - amethyst
546. Grape & Cable nappy - purple
547. Northwood Grape & Cable breakfast creamer and sugar - purple
548. Double Star pitcher and six tumblers - green
549. **Fenton's Grape & Cable 6" bowl - red**
550. **Inverted Strawberry** pitcher and six tumblers - amethyst
551. Lotus & Grape bowl - blue
552. Swan - ice green
553. Butterfly & Berry pitcher and six tumblers - blue
554. Swan - purple
555. Swan - ice blue
556. Milady tankard and six tumblers - blue
557. Fenton's Peacock at Urn bowl, ice cream-shape - blue
558. **Rare** Feather & Heart pitcher, one tumbler - green
559. Fenton's Peacock at Urn bowl, ice cream-shape - marigold
560. Fenton's Peacock at Urn bowl, ice cream-shape - green
561. **Thistle** pitcher and one tumbler - marigold
562. Grape & Cable table set, 4-piece - marigold
563. Heavy Iris pitcher and six tumblers - amethyst
564. Peacock on Fence bowl, pie crust-edge - purple
565. Peacock on Fence bowl, pie crust-edge - blue
566. Fieldflower pitcher - **rare amber**
567. **Daisy & Drape vase - white**
568. Stork & Rushes pitcher and six tumblers - blue
569. Acorn Burrs butterdish - purple
570. Flower & Dill hat shape - aqua
571. Grape Arbor tankard and six tumblers - purple
572. Hearts & Flowers bowl - **ice blue**
573. Diamond Lace pitcher and six tumblers - purple
574. Peacock at Fountain water set - blue
575. Two Flowers 7" footed bowls (2) - green
576. Wishbone 10" bowl, pie crust-edge - purple
577. Hobstar Band pitcher and six tumblers - marigold
578. Embroidered Mums bowl - blue
579. Lattice & Grape pitcher, six tumblers - amethyst
580. Nippon bowl, pie crust-edge - white
581. Nippon bowl, pie crust-edge - purple
582. Northwood Peach pitcher and six tumblers - blue
583. Nippon bowl, pie crust-edge - **ice blue**
584. Northwood Peach pitcher and six tumblers - white with gold decor
585. Nippon bowl, ruffled - purple
586. Wishbone bowl, footed - purple
587. Oriental Poppy tankard and six tumblers - purple
588. Wishbone bowl, footed - green
589. **Inverted Strawberry** pitcher, one tumbler - green
590. Horse Medallion bowl, ruffled - marigold
591. Hen on Nest - marigold
592. Imperial Grape pitcher and six tumblers - amethyst
593. Lion 6" bowl - marigold
594. **Wishbone** pitcher and six tumblers - amethyst
595. Peacock at the Fountain butterdish - purple
596. 11" Chrysanthemum & Windmill bowl - marigold
597. **Inverted Strawberry** pitcher, six tumblers - amethyst
598. 11" Chrysanthemum & Windmill bowl - blue
599. **Greek Key** pitcher and six tumblers - green
600. Fanciful bowl - blue
601. Three Fruits 6" bowl - ice green
602. Singing Birds pitcher and six tumblers - purple
603. Chrysanthemum & Windmill footed ice cream-shape bowl - green
604. Chrysanthemum & Windmill footed ice cream-shape bowl - amethyst
605. Northwood Dandelion tankard and six tumblers - purple
606. Memphis punch bowl, base and six cups - purple
607. Imperial Jewels punch bowl - **red**
608. **Dragon & Lotus plate - blue, (ONLY SIX KNOWN!)**
609. Memphis fruit bowl, base and six cups - purple
610. Dragon & Lotus plate - marigold
611. Cherry Mikado compote, round - marigold
612. Peacock at the Urn compote - teal
613. **Stippled Three Fruits plate, ribbed exterior - aqua opalescent**
614. Peacock at the Urn compote - light blue
615. Lotus & Grape plate - green
616. Peacock at the Urn compote - white
617. Peacock at the Fountain berry set, 7-piece - purple
618. Peacock on Fence plate - green
619. Pine Cone 6" plate - blue
620. Good Luck plate - green
621. Amaryllis compote - marigold
622. Imperial Grape punch bowl and base - green
623. NuArt **Homestead** plate - green
624. Broken Arches punch bowl and six cups (base repaired) - purple

625. Posy & Pods chop plate - peach opalescent
626. Many Fruits punch bowl, base, six cups - purple
627. Northwood bushel basket, round - marigold
628. Acanthus plate - smoky
629. Many Fruits punch bowl, base and six cups - blue
630. Good Luck plate, ribbed exterior - marigold
631. Peacock & Grape ice cream-shape bowl - **amberina**
632. Northwood bushel basket, round - ice green
633. Stippled Three Fruits plate - purple
634. Northwood bushel basket, round - **aqua opalescent**
635. Peacock on Fence plate - white
636. Northwood bushel basket, round - green
637. Northwood bushel basket, round - lavender
638. **Rose Show plate** - blue
639. Northwood bushel basket, round - purple
640. **Poppy Show plate** - blue
641. Northwood bushel basket, round - blue
642. Northwood bushel basket, round - blue
643. Strawberry bowl, Basketweave exterior - purple
644. Northwood bushel basket, round - Custard
645. Pony bowl - amethyst
646. Millersburg Strawberry bowl, square - amethyst
647. Peacock & Grape bowl - amethyst
648. Pony bowl - marigold
649. Peacock & Grape bowl - blue
650. **Trout & Fly bowl**, ice cream-shape - green
651. Millersburg Nesting Swan bowl - green, Satin finish
652. Millersburg Nesting Swan bowl - green, radium finish
653. Peacock on Fence bowl - **aqua opalescent**
654. Three Fruits bowl, footed, Stippled - **aqua opalescent**
655. Embroidered Mums bowl - **ice blue opalescent**
656. Lustre Rose plate - marigold
657. Embroidered Mums bowl - blue
658. Rose Show bowl - **aqua opalescent**
659. Grape Leaves bowl - clambroth
660. Millersburg **Courthouse** bowl, ruffled - amethyst
661. Heavy Grape 8" plate - purple
662. Butterfly & Berry table set - blue
663. Fenton's Peacock at Urn bowl - blue
664. Heavy Grape chop plate - marigold
665. Peacock on Fence bowl, ruffled - **aqua opalescent**
666. Grape & Cable dresser tray - marigold
667. Grape & Cable banana bowl - marigold
668. Stippled Three Fruits bowl - **aqua opalescent**
669. Grape & Cable banana bowl - purple
670. **Good Luck bowl** - **aqua with heavy opalescence**
671. Grape & Cable punch bowl, base and 18 cups - marigold
672. Grape & Cable fruit bowl - green
673. **Ultra-rare 8" Vintage bowl, candy ribbon-edge - aqua opalescent**
674. Grape & Cable Thumbprint berry set, 7-piece - purple
675. Sunflower footed bowl - teal blue
676. Grape & Cable ruffled berry set, 7-piece - purple
677. Millersburg Diamond pitcher and one tumbler - marigold
678. Peacock on Fence bowl, pie crust-edge - blue
679. Orange Tree fruit bowl - marigold
680. Millersburg Peacock at Urn bowl, ruffled - green
681. Wreathed Cherry berry set, 7-piece - **super white!**
682. Peacock at the Urn compote, round - aqua/mari-gold overlay - unusual
683. Peacock on Fence bowl, pie crust-edge - green
684. Peacock at the Urn compote - cobalt blue
685. Plaid bowl - blue
686. Millersburg boutonniere - green
687. Beaded Cable rosebowls (2) - green
688. Leaf & Beads rosebowl - **aqua opalescent**
689. Beaded Cable rosebowl - purple
690. Drapery rosebowl - aqua opalescent
691. Beaded Cable rosebowl - blue
692. Beaded Cable rosebowl - marigold
693. Beaded Cable rosebowl - aqua opalescent
694. Grape & Cable cracker jar - marigold
695. Finecut & Roses rosebowl - **aqua with heavy opalescence**
696. Grape & Cable cracker jar - purple
697. Wishbone plate, footed - purple
698. Cosmos & Cane compote in goblet shape - marigold
699. Millersburg Many Stars bowl - green
700. Cosmos & Cane ruffled miniature punch bowl - white
701. **Millersburg Trout & Fly bowl**, ruffled - green
702. Millersburg Hanging Cherries table set - marigold
703. **Millersburg Mitered Ovals vase** - **excellent green**
704. Posy & Pods 9" plate - green
705. **6" Leaf Chain bowl** - **red**
706. Garden Path bowl - marigold
707. Grape & Cable plate, footed - green
708. **6" Acorn bowl** - **red**
709. **Dragon & Strawberry bowl**, ice cream-shape - blue
710. Butterfly bon-bon - cobalt
711. Good Luck bowl, pie crust-edge - marigold
712. Good Luck bowl, pie crust-edge - blue
713. Butterfly bon-bon - amethyst
714. Good Luck bowl, ruffled - purple
715. **Persian Medallion bon-bon** - **red**
716. Good Luck bowl, pie crust-edge - aqua
717. Good Luck bowl, pie crust-edge - green
718. Persian Medallion bon-bon - **aqua**
719. Good Luck bowl, pie crust-edge - blue
720. Persian Medallion bon-bon - **Vaseline**
721. Ten Mums bowl - amethyst
722. Ten Mums bowl - blue
723. Greek Key bowl - cobalt
724. Ten Mums bowl - green
725. Embroidered Mums bowl - purple
726. **Little Fishes bowl** - marigold
727. Dugan's Heavy Grape bowl - purple
728. Good Luck bowl, fluted - purple
729. Wreathed Cherry table set, 4-piece - purple
730. Good Luck bowl, fluted - blue
731. Grape & Cable breakfast creamer and sugar - gn
732. **Three Fruits bowl**, footed - **aqua opalescent**
733. Good Luck bowl, ruffled - green
734. Three Fruits bowl, footed - **super purple**
735. Millersburg Hanging Cherry bowl, ice cream-shape - green
736. Peacock on the Fence bowl - marigold
737. Peacock on the Fence bowl - amethyst
738. Vintage bowl, candy ribbon-edge - green
739. Plaid bowl - marigold

740. Carolina Dogwood bowl - moonstone (marigold over Milk Glass)
741. Panel basket - **ice green**
742. Stork & Rushes basket - marigold
743. Millersburg Blackberry bowl - green
744. Basketweave basket - marigold
745. Peacock on Fence bowl, fluted - marigold
746. Heavy Basketweave basket - marigold
747. **Dragon & Strawberry bowl**, ruffled, collar base bowl - cobalt
748. Millersburg Blackberry Wreath bowl, ice cream-shape - green
749. Orange Tree footed pitcher and six tumblers - blue
750. Dragon & Strawberry bowl, footed - green
751. Peacock at the Urn bowl, ice cream-shape - excellent blue
752. Dragon & Strawberry bowl, footed - deep marigold
753. **Aurora** 11" bowl - green
754. Rose Show plate - pastel marigold
755. Good Luck bowl - deep marigold
756. Fenton basket - blue
757. Fenton basket - marigold
758. Dragon & Lotus bowl - green
759. Four-Seventy-Four pitcher - marigold
760. **Dragon & Lotus bowl - excellent red!!**
761. Little Flowers berry set, 7-piece - green
762. Robin pitcher and two tumblers - marigold
763. Dragon & Lotus bowl - **ice green opalescent**
764. Four-Seventy-Four milk pitcher - marigold
765. Dragon & Lotus bowl - amber
766. Four-Seventy-Four milk pitcher - green
767. Raspberry milk pitcher - marigold
768. Dragon & Lotus bowl - cobalt blue
769. Beaded Acanthus milk pitcher - marigold
770. Dragon & Lotus bowl - peach opalescent
771. Flute & Cane milk pitcher - marigold
772. Open-edge basket - **red** (chipped)
773. Dragon & Lotus bowl - marigold w/ice green base
774. Star of David & Bows bowl - purple
775. Dragon & Lotus bowl - marigold on Vaseline
776. Imperial Grape goblet - marigold
777. June 1905 Shriner's handled mug "Niagara Falls"
778. Dragon & Lotus bowl - lavender
779. Five Flute tumblers and cracked pitcher - marigold
780. Dragon & Lotus bowl - peach opalescent
781. Windmill pitcher - marigold
782. 12 Acorn Burr punch cups - purple
783. Carolina Dogwood bowl - **aqua base with opalescence**
784. Bells & Beads bowl - purple
785. 8" Windmill & Mums bowl - green
786. Two Flowers 10" footed bowl - marigold
787. Vintage bon-bon - amethyst
788. Millersburg Peacock at Urn ice cream bowl - amyt
789. Panelled Dandelion pitcher and six tumblers
790. "Bernheimer Brothers" Many Stars bowl - blue
791. Tumble-up - marigold
792. Five Northwood Waterlily & Cattails tumblers - marigold
793. **Rare Heart & Horseshoe** bowl - marigold (Fenton's Good Luck)
794. Fenton Waterlily & Cattails tumbler
795. Poinsettia footed bowl - cobalt
796. Windmill tumbler - purple

797. Pretty Panels tumbler - ice green
798. Embroidered Mums bowl - **ice green**
799. Six Rambler Rose tumblers, all matched
800. 10" Three Fruits bowl, Basketweave exterior - **ice green**
801. Grape Arbor tumbler - purple
802. Stork & Rushes tumbler - marigold
803. Grape & Cable bowl, pie crust-edge - green
804. Posy & Pods bowl - green
805. **Good Luck bowl - aqua opalescent**
806. Good Luck bowl - marigold, excellent
807. Imperial Grape ruffled plate - clambroth
808. Wishbone 10" bowl, Basketweave exterior - green
809. Millersburg Many Stars bowl - marigold
810. **Rare Fashion breakfast creamer and sugar - purple**
811. Dragon & Lotus bowl - marigold
812. Millersburg Primrose bowl - green
813. Millersburg Night Stars 6" bowl
814. Five Stork & Rushes tumblers
815. Butterfly & Berry tumbler - blue
816. Wreath of Roses punch cup - amethyst
817. Two Imperial Grape wines
818. Ice green Orange Tree mug, not iridized
819. Blue opalescent Three Fruits bowl, not iridized
820. Blue opalescent bowl

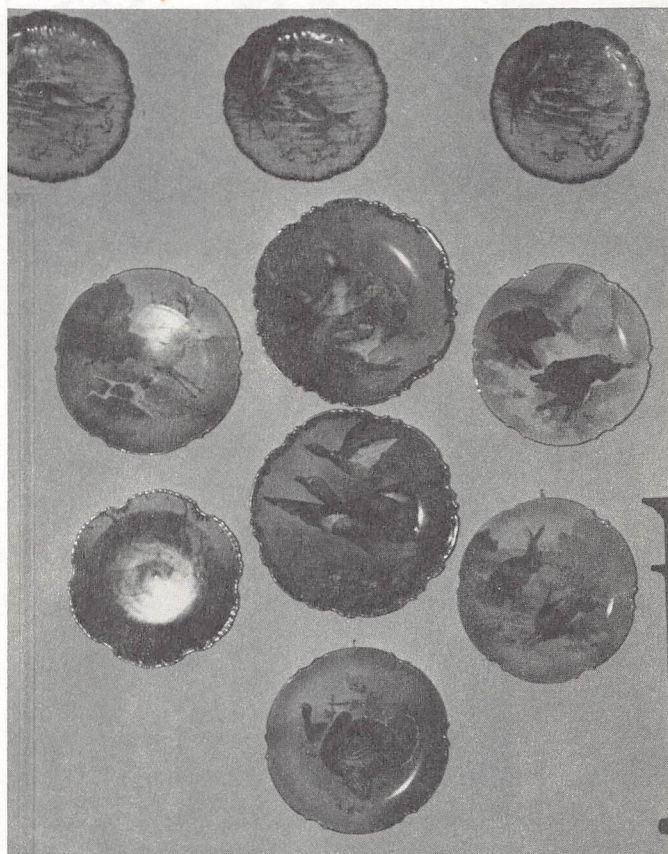
SOUVENIR ITEMS:

821. HOACGA hatpin holder, red, 1977, signed Fenton
822. HOACGA Corn vase, red, 1978, signed Fenton
823. HOACGA hatpin holder, ice green, 1980, signed Fenton
824. HOACGA loving cup, red, 1979, signed Fenton
825. HOACGA loving cup, ice blue, 1982, signed Fenton
826. HOACGA loving cup, peach opal, 1983, signed Fenton
827. Grape & Cable tobacco jar, purple, Presznick Carnival Museum, Lodi, Ohio, 1969
828. ICGA plate, purple, Columbia, Ohio, 1974

ANTIQUES: Selling beginning Friday at 6:00 p.m.

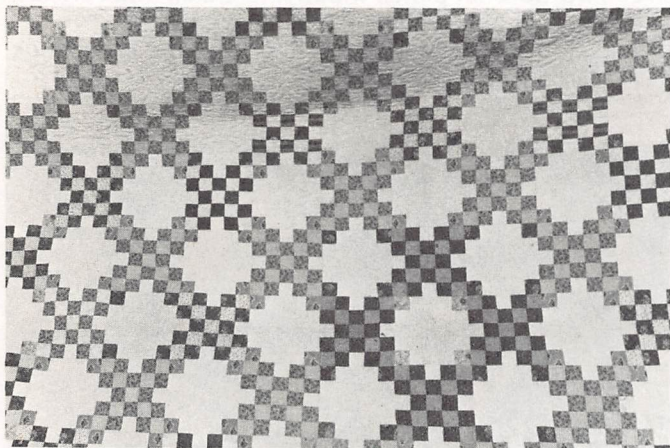
1. George Washington University mugs (2)
2. Corn Palace, South Dakota, bell
3. Currier & Ives bell
4. Great Smokey Mountain bell
5. Norman Rockwell bell
6. Two Custard mugs dated 1883 - 1886
7. Two crystal bells
8. Assorted candy containers - small Bulldog; Donkey & Cart; Horn; Station Wagon; Boat; Bulldog with closure; Hearse; Horse Head; Lamp; Lantern; large Fire Engine; two small Fire Engines; standing Scottie; large Bulldog; Eye Glass; Dog with closure
9. Northwood **Royal Ivy** toothpick holder
10. Moser enamelled toothpick holder on gold
11. Pressed Glass toothpick holder
12. Coronet Game plate with flying Quail, artist signed
13. Coronet Game plate w/strutting Bird, artist signed
14. Royal Munich 13" plate with Elk
15. Coronet plate with Monk, artist signed
16. Comte Artois, Limoges France plate with Golden Pheasant, artist signed
17. Comte Artois, Limoges France plate with Bird, artist signed
18. Large Moser Pigeon Blood bowl in gold ormolu
19. Silver inlaid Crackle Glass bread tray
20. Gloria etched Cambridge Glass individual nut bowls (6)
21. Glass cheese dish
22. Satin Glass bud vase
23. Cambridge small green bowl
24. Vaseline Button & Daisy bride's bowl
25. Cosmos Milk Glass butterdish
26. Beaded Drape cased miniature Satin Glass lamp, deep pink
27. Blue opalescent Hobnail basket
28. Royal Doulton Gillian
29. Royal Worcester "Grandmother's Dress"
30. Two Chinese figures
31. Heubach figure
32. Oriental Foo Dog
33. Glass Goose Girl figure
34. Pair brass Bradley & Hubbard kerosene lamps with Smith painted shades
35. Blue opalescent 3-lily epergne
36. Amberina Swirl decorated basket
37. Dutch Scene powder box
38. Daisy glass basket
39. Blue Thumbprint pitcher with amber handle
40. Blue glass basket with triple amber handle
41. Banquet lamp with red Satin shade
42. Two Hull Pottery vases
43. Two crocheted bedspreads
44. Crocheted round table cover
45. Marble-top fern stand/banquet lamp
46. Hanging parlor lamp
47. Two Flow Blue pitchers "The Hofburg"
48. Flow Blue pitcher with Dutch scene
49. Silver ashtray
50. Several sets of silver flatware
51. Set of six Oriental sterling spoons
52. Six sterling salt shakers
53. Sterling flatware, service for six
54. Nine assorted pieces of sterling flatware

55. Four silver ladles
56. Knife
57. Ashtray with Dog, silver rim
58. Heisey Glassware, Orchid pattern - eight goblets, eight sherbets, six plates
59. Moser Pigeon Blood plate with gold decor
60. Etched plate, signed Steuben
61. M.Z. Austria Fish set - platter, gravy and 12 plates
62. Limoges France Fish set - eight plates and gravy
63. Millersburg crystal Hobstar & Feather ice cream bowl
64. Austria Game plate
65. Limoges Game plates (2), cobalt with gold
66. Austria Floral plate with red and gold, artist signed
67. Cut and Pressed Glass fernery
68. Coronet plate with Bird, artist signed
69. Heisey serving tray with compote
70. Coronet Game plate with Quail
71. R.K. Beck chop plate with Sheep
72. R.S. Prussia Floral cake plate, Feather mold
73. Two Coronet plates with flying Quail, artist signed
74. Coronet plate with Duck, artist signed
75. Limoges 13" handpainted plate with Woodcock, pierced, artist signed



76. Limoges plate with two Snipes, artist signed
77. Coronet plate with fighting Cocks, red trim, artist signed
78. Coronet plate with Turkey, artist signed
79. Limoges plate with flying Ducks, artist signed
80. 12" Coronet plate with two Golden Pheasants, artist signed

81. Coronet plate with Rabbits, artist signed
82. Coronet plate with Boars, artist signed
83. Coronet plate with Deer & Dog, artist signed
84. Six French Fish plates with gold trim
85. Two Limoges Fish plates with gold trim
86. Two large Beehive Portrait plates
87. 15" Haviland plate with Indian
88. 16" Canton Oriental charger
89. Blue Finecut & Block Pattern Glass pitcher and one tumbler
90. Amberina Jack in Pulpit vase
91. Miniature China furniture
92. Lustre Rose cake plate, chocolate set, creamer and sugar bowl
93. Cast iron doorstep - English Pointer Dog
94. Cast iron Lion banks (2)
95. Cast iron Milk Wagon
96. Two small iron Frogs
97. **12 Quilts** - handquilted



98. **Cut Glass lamp** - Harvard & Floral
99. Haviland Limoges plate with Pheasant
100. Limoges plate with Quail

101. Coronet plate with Grouse, artist signed
102. Coronet plate with Mallard, artist signed
103. Austria plate with Snipe, artist signed
104. Limoges plate with Quail
105. Limoges plate with Golden Pheasant
106. Fenton water set, Vaseline opalescent Stripe with cobalt handle
107. Vaseline opalescent Daisy & Fern water set
108. Cranberry Glass water set
109. Amberina water set
110. Cranberry opalescent Hobnail bride's bowl
111. Cased decorated pitcher with blue glass handle
112. Black glass candlestick and vase
113. Checkerboard Pattern Glass creamer and sugar
114. Two large Pressed Glass open compotes
115. Two large glass baskets
116. Fenton basket, amber/opalescent
117. Lamp shades
118. Tree of Life compote with handle
119. Cupid & Venus Pattern Glass pitcher
120. Moon & Star Pattern Glass pitcher
121. Two Hires Root Beer crock mugs
122. Four Cranberry Glass bowls
123. Cut Glass pitcher
124. Bird & Strawberry Pattern Glass bowl
125. Purple Croesus toothpick holder
126. Two Cranberry Hobnail baskets
127. Blue opaque basket
128. Roseville Pottery candleholders, blue Zephyr Lily
129. Roseville Pottery hanging baskets (2), blue Zephyr Lily
130. Roseville Pottery planter, blue Zephyr Lily
131. Roseville Pottery basket, blue Zephyr Lily
132. Weller Pottery basket
133. Covered box with Birds
134. Three bone dishes
135. Cased glass bride's bowl and stand
136. Oriental plate, marked
137. Saki cups
138. Stevens & Williams lily for epergne
139. Cobalt Oriental Scenic vase
140. Vaseline Glass ashtray
141. Flower frogs
142. Three kerosene lamps - Zippered Loop (2), Ridgeway (1)
143. Epergne, damaged
144. Floral Gone with the Wind lamp
145. Gone with the Wind lamp, lavender
146. Assorted soapstone (3)
147. Plateau, 14" mirror
148. Bavaria 12" Scenic plate
149. Beehive Courting Scene plate
150. KPM plate with Cherubs
151. Floral saucer
152. Smith Brothers Scenic German plate
153. Bavaria plate with Apples
154. Cottage Scene cake plate
155. Plate with Grapes and gold
156. Prussia cake plate
157. CT Atwasser chop plate
158. Chop plates (3)
159. Custard Chrysanthemum Sprig table set and toothpick (sugar damaged)
160. Wire holders

161. R.S. Prussia Floral bowl
162. R.S. Prussia Lily relish
163. Royal Crown cracker jar, signed
164. LeMieux coffee set - eight plates, 24k gold
165. Haviland handpainted Violets on creamer, sugar, toothpick, salt and pepper
166. Centennial bread tray
167. Cut Glass relish
168. Christmas plates, figures and Avon
169. Haviland platter
170. Aladdin lamp, amber
171. Limoges Courting Scene plate, cobalt
172. Satin Swirl water set
173. Decorated Rubina pickle castor
174. Pressed Glass pickle castors (2)
175. Modern Amberina bottle
176. Custard intaglio butterdish top, Chrysanthemum Sprig base
177. Custard Louis XV banana bowl
178. Millersburg crystal Hobstar & Feather ice cream bowl
179. Millersburg crystal Hobstar & Feather bowl
180. Millersburg crystal Hobstar & Feather punch bowl base
181. 8" Cut Glass bowl
182. Jewel Tea teapot with diffuser
183. Button & Daisy glass castor set
184. Pottery pitcher
185. Columbia Coin ashtrays (4)
186. Punch bowl with tray and 12 cups
187. Heisey Crystalite punch bowl and cups
188. Bristol ewers (2)
189. Handpainted 12" porcelain vases (2)
190. R.S. Prussia small bowls (3)
191. Miscellaneous china
192. Fenton Hobnail epergne, amethyst/opalescent
193. Northwood Cherry & Cable water set
194. Northwood Cherry & Cable table set
195. Northwood Cherry & Cable berry set
196. Pink Lustre coffee pot
197. Assorted stemware
- 197a. Miscellaneous bells
198. Dentist's cabinet with marble top, marble liners in drawers, dated 1926
199. Walnut Victorian bed
200. Brass coat rack
201. Eastlake upholstered bench
202. Modern oak curved glass china cabinet
203. Oak curved glass china cabinet

COINS:

204. \$2½ Indian gold coin, 1914
205. \$20 U.S. St. Gaudens gold coin, 1924
206. U.S. Mint silver dollar set - 1880, 1881, 1882, 1885, 1890
207. \$2½ gold coin, 1852
208. One dollar 1852 gold coin
209. 1857 quarter
210. 1877 quarter
211. 1876 quarter
212. 1883 nickel
213. 1853 penny
214. 1836 half dollar
215. Complete Roosevelt dime book set

216. Complete Jefferson nickel book, 1938 - 1964
217. Jefferson nickel set, not complete, 1938 - 1961
218. Five 1984 U.S. mint sets
219. Five 1981 U.S. mint sets
220. Proof sets - 1981, 1982, 1983, 1984, 1987
221. 1900 - 1973 coins in frame
222. "The Silver Story" 1922 silver dollar and silver certificate in frame
223. Liberty silver dollars (25), 1880 through 1934 Liberty and Morgan dollars

CLOCKS:

224. Ansonia clock, Royal Bonn case, light blue Floral, running
225. Seth Thomas time & strike Westminster chimes (chimes or silent), good running order
226. Ingraham Banjo clock, time only, adjusted and running
227. Small New Haven Banjo clock, 8-day, time only, good running order
228. Waterbury triple decker with Washington, D.C. on front, running
229. Seth Thomas mantel clock, time, strike & alarm, Beehive case, running
230. Big Ben Westclox mantel clock, running
231. Ornate walnut kitchen clock, running
232. E.N. Welch shelf clock, 30-hour, time & strike, running
233. Black mantel clock, running
234. Regulator, oak Schoolhouse case, time & strike, running
235. New Haven marble mantel clock, time & strike, rhinestones around face, good running order
236. New Haven Lyre clock, time & strike, running good, needs adjusting
237. Emperor Carriage clock, time, strike, chimes & moon phase, good running order
238. Aristocrat Building clock, time only, running

POCKET WATCHES:

239. Elgin, B.W. Raymond, 21-jewel, lever set, open face, good running order (g.r.o.)
240. Illinois, Bunn Special, 21-jewel, open face, g.r.o.
241. Hamilton, Railway Special, 992B, 21-jewel, lever set, open face, g.r.o.
242. Hamilton, 20-year gold-filled case, 17-jewel, stem set, open face, g.r.o.
243. Illinois, Monarch, 17-jewel, stem set, open face, g.r.o.
244. Hampden, Gen. E. Stank, 17-jewel, gold hunting case, monogrammed, lever set, g.r.o.
245. Elgin, Shocker Master, 17-jewel, stem set, open face, g.r.o.
246. Elgin, Father Time, 21-jewel, lever set, open face, g.r.o.
247. Rockford, 17-jewel, gold hunting case, monogrammed, g.r.o.
248. Hamilton 945, thin 23-jewels, 10k solid-gold case, stem set, open face, g.r.o.
249. Columbia advertising watch, "Time for Fertilizer", open face, g.r.o.
250. Hampden, Molly Stark, lady's watch pin set, open face, g.r.o.

251. Waltham, Premier, Vanguard, 23-jewel, lever set, open face, g.r.o.
252. Illinois, Bunn Special, 21-jewel, lever set, open face, g.r.o.
253. New York Standard Watch Company hunting case watch, g.r.o.
254. LeGant Swiss-made watch, hunting case w/Hunting Scene, g.r.o.
255. Seth Thomas, silver and rose-gold case, 17-jewel, dated 1883, open face, g.r.o.
256. Illinois, Bunn Special, 23-jewel, lever set, open face, g.r.o.
257. Hamilton, Railway Special, 992B, 21-jewel, lever set, open face, g.r.o.
258. Dueber Hampden, Dueber Grand, 17-jewel, 14k gold-filled hunting case, lever set, g.r.o.
259. Illinois, Bunn Special, 60-hour, 21-jewel, lever set, open face, g.r.o.
260. Illinois, Bunn Special, 23-jewel, lever set, open face, g.r.o.
261. Illinois, Bunn Special, 24-ruby jewel, lever set, open face, g.r.o.
262. Illinois, Master, 17-jewel, open face, case dented and brassed, g.r.o.
263. Elgin, G.M. Wheeler, brassed case, open face, g.r.o.
264. Waltham, Riverside, 21-jewel, lever set, open face, g.r.o.
265. Rockford, 21-jewel, 25-yr. gold case
266. Illinois, Bunn Special, 21-jewel, lever set, open face, g.r.o.
267. Hamilton, Railway Special, 992B, 21-jewel, lever set, open face, g.r.o.
268. Hamilton, Railway Special, 992B, 21-jewel, lever set, open face, g.r.o.
269. Gallet, Swiss-made by Gallet Company, 17-jewel, stem set, open face, g.r.o.
270. Seth Thomas, 25-yr. 14k gold-filled hunting case, lid missing, g.r.o.
271. Lucian Pickard, 17-jewel, (Incabloc) Swiss-made, stem set, open face in porcelain, g.r.o.
272. Elgin, 25-yr. beautiful gold case, stem set, open face, g.r.o.
273. Waltham 645, 21-jewel, lever set, open face, g.r.o.
274. Three gold-filled pocket watch chains
275. Hamilton, Rail Road, 23-jewel, adjusted 6-positions lever set, open face, g.r.o.
276. Illinois, Bunn Special, 21-jewel, lever set, adjusted 6-positions, open face, g.r.o.

SHOTGUNS:

277. Savage, Model 755A automatic, 16 gauge, Serial #558100
278. Winchester, Model 12, trap grade, 12 gauge, ventilated rib, full choke, Serial #247836, made in 1960, beautiful wood, excellent condition
279. Browning, Belgium Super, posed o/u, square knob, 20 gauge, f/m choke, 26½" barrel, Serial #51619-V8, like new condition
280. Winchester, Model 2, 410 gauge, ventilated rib, 26½" barrel, made in 1960, Serial #148781, beautiful wood, excellent condition
281. Remington, Automatic Model 11-48, 28 gauge, ventilated rib, skeet barrel, Serial #4001494, excellent condition



282. Remington, Automatic Model 11-48, 410 gauge, modified plain barrel, Serial #132638, excellent condition
283. Remington, slide action Model 10, 12 gauge, improved cylinder, Serial #214790
284. Remington, slide action pump Model 870, 12 ga., modified choke, Serial #1298332V
285. Winchester, Model 12, 20 gauge, full choke, slide action pump, Serial #787714
286. Winchester, slide action pump Model 12, 12 gauge, full choke, Serial #404741
287. Winchester, Model 12, slide action pump, 16 ga., full choke, Serial #1434431
288. Winchester, Model 12, slide action pump, feather weight, 12 gauge, full choke, Serial #1822108F
289. Winchester, Model 12, slide action pump, 20 ga., full choke, Serial #343447
290. Winchester, Model 97, slide action pump, 12 ga., full choke, 32" barrel, Serial #433218
291. Browning, Belgium automatic A5 (Sweet Sixteen), 16 gauge, ventilated rib, modified choke, gold trigger, Serial #59826
292. Winchester, Model 37A, 410 gauge, single shot, full choke, chambered for 3" shells, Ser. #C567479
293. ERA, made in Brazil for U.S. market, double barrel, 410 gauge, full choke, 3" chambers, like new
294. KFC, made in Japan, Model 250, 12 gauge, modified choke, ventilated rib, Ser. #KF109376, like new

RIFLES:

295. Winchester, Model 62A, slide action pump, 22 ga., S-L-LR, Serial #386777
296. Winchester, Model 1892 (Pat. Oct. 14, 1884), 32-20 WCF, octagon barrel, lever action, Serial #224693
297. Winchester, Model 94, 30-30 caliber, lever action, Serial #2070079
298. Winchester, Model 1890, slide action pump, 22 ga., WRF, octagon barrel, Serial #769606
299. Winchester, bolt action, Model 70, carbine, 270 caliber, Serial #G1678110
300. Winchester, bolt action, Model 70, carbine, 30-06 caliber Springfield with a Lyman All American 4x scope, Serial #G1688041
301. Marlin, Model 336-RC, lever action, 30-30 caliber, with a universal scope, Serial #AC72413
302. Winchester, Model 62A, 22 caliber, S-L-LR, visible hammer, NIB made in 1958, Serial #403789





FIRST CLASS



Address Correction Requested

