



**AUCTION SERVICE**

## **Carnival Glass Auction**

**10:00 a.m., Saturday, March 17, 1990**

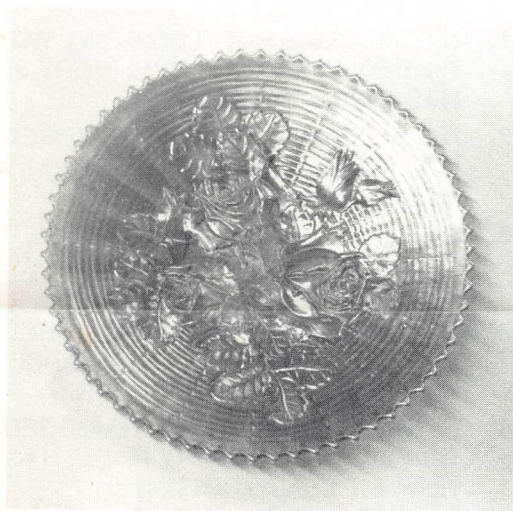
(Preview: 7 - 10:00 p.m. Friday, 8 - 10:00 a.m. Saturday)

at the **Coliseum Holiday Inn**

4742 Brecksville Rd., Richfield, Ohio 44286

(216) 659 - 6151

(Located on the south side of Cleveland; Ohio Turnpike Exit 11, just off I-77 N. on Rte. 21)



If there is any question in the minds of collectors regarding the term "Quality", we now have the opportunity to dispel them. We are pleased to present the Ruth Schinestuhl Collection at auction, to the highest bidder.

Quality and outstanding iridescence are well represented in this collection. This will be a rare opportunity to purchase any number of the top of the line examples Ruth has collected in over ten years. Good luck finding these items elsewhere - better yet, do yourself a favor and make your plans to attend! See you on the 17th and bring your camera!

The Holiday Inn - Coliseum will host the event. You may make your reservations by calling the motel direct at (216) 659 - 6151. There is a special rate of \$52 per room, but be sure to mention the Burns Auction Service.

The motel is located just off Exit 11 of the Ohio Turnpike and just off I-77 on Rte. 21 - you can't miss it! Airport transportation information can be obtained via the motel. Mail bids due by Wednesday, March 14, 1990.

## **Burns Auction Service**

Tom Burns  
109 E. Steuben St.  
Bath, New York 14810  
(607) 776-7942

Bill Richards  
44 Water St.  
Poland, Ohio 44514  
(216) 757-2001

Licensed and Bonded by the Department of Commerce in favor of the State of Ohio



Mail Bids honored under the following conditions:

1. No deposit required. Bidders will take full responsibility to honor any and all bids we execute for them. Payment in full plus postage and handling required after notification and before we ship any item to them.
2. Items are bid on in perfect condition with average or above average iridescence OR as listed in the brochures. Bids will not be carried out when damage on an item has been found during the auction.
3. Successful bidders will be notified by collect call from the auctioneer (so be sure to include phone number).
4. Phone inquiries about the glass or any other questions are welcome.
5. All non-successful will receive a result summary in the mail. Results of all bids will be provided.
6. If you have some other person at the auction bidding for you, they must pay for the item before taking it.
7. Mail bids due by Wednesday, March 14, 1990.

- |   |   |
|---|---|
| <p>_____ 1. N Singing Bird Mug - Pur. (has Elec. Blue irid.) <u>950</u></p> <p>_____ 2. N Singing Bird Mug - Mari. (dark and nice)</p> <p>_____ 3. N Peacock at the Fountain Creamer - Amy. (nice multi-color; very scarce) <u>950</u></p> <p>_____ 4. N Peacock at the Fountain Covered Butter Dish - Pur. (top finial has damage - base OK) <u>1000</u></p> <p><u>7000</u> 5. N PEACOCK AT THE FOUNTAIN 8 PC. PUNCH SET - ICE BLUE (EXTREMELY RARE AND PERFECT; HAS EXQUISITE COLOR AND QUALITY)</p> <p><u>4250</u> 6. N PEACOCK AT THE FOUNTAIN 8 PC. PUNCH SET - WHITE (EXTREMELY RARE AND DESIRABLE WITH FROSTY COLOR AND QUALITY)</p> <p><u>900</u> 7. N PEACOCK AT THE FOUNTAIN 8 PC. PUNCH SET - MARI. (VERY DESIRABLE WITH GOOD DARK COLOR)</p> <p><u>700</u> 8. N PEACOCK AT THE URN LARGE ICE CREAM BOWL - ICE BLUE (VERY RARE WITH BEAUTIFUL HIGHLIGHTS)</p> <p><u>600</u> 9. N PEACOCK AT THE URN LARGE ICE CREAM BOWL - WHITE (RARE; A BIT FLATTER AND HAS GOOD COLOR)</p> <p>_____ 10. (2) N PEACOCK AT THE URN INDIVIDUAL ICE CREAM BOWLS - WHITE (VERY SCARCE AND NICE; SOLD EACH)</p> <p><u>350</u> 11. N PEACOCK AT THE URN LARGE ICE CREAM BOWL - MARI. (VERY SCARCE; NICE PINK AND BLUE IRID.)</p> <p><u>500</u> 12. 9" FENTON PEACOCK AT THE URN PLATE - BLUE (VERY SCARCE WITH BEAUTIFUL COLOR)</p> <p><u>300</u> 13. 8 1/2 - 9" FENTON PEACOCK AT THE URN RUFFLED BOWL - GREEN (VERY SCARCE WITH BRIGHT GREEN IRID.)</p> <p><u>400</u> 14. 8 1/2 - 9" FENTON PEACOCK AT THE URN RUFFLED BOWL - AMY. (VERY SCARCE; HAS BRIGHT BLUE AND RED IRID.)</p> <p><u>1800</u> 15. N PEACOCKS BOWL WITH PIE CRUST EDGE AND RIBBED EXTERIOR - EMERALD GREEN (EXTREMELY DESIRABLE; HAS BRIGHT BLUES, YELLOWS, ETC. - A TOP QUALITY ITEM)</p> <p><u>1050</u> 16. N PEACOCKS RUFFLED BOWL WITH RIBBED EXTERIOR - ICE GREEN (VERY RARE AND DESIRABLE; HAS GOOD COLOR AND QUALITY)</p> <p><u>1600</u> 17. N PEACOCKS RUFFLED BOWL WITH RIBBED EXTERIOR - ICE BLUE (VERY RARE AND DESIRABLE; HAS PINK HIGHLIGHTS)</p> | <p>18. N PEACOCKS RUFFLED BOWL WITH RIBBED EXTERIOR - ELEC. BLUE (ABSOLUTELY FANTASTIC COLOR; VERY NICE)</p> <p>19. N PEACOCKS STIPPLED RUFFLED BOWL WITH RIBBED EXTERIOR - RENNINGER BLUE (VERY ODD AND DESIRABLE COLOR; HAS BEAUTIFUL IRID.)</p> <p>20. N PEACOCKS RUFFLED BOWL WITH RIBBED EXTERIOR - AQUA OPAL. (VERY RARE; HAS LIGHT BUTTERSCOTCH OVERLAY; NICE)</p> <p>_____ 21. N PEACOCKS RUFFLED BOWL WITH RIBBED EXTERIOR - PUR. (VERY SCARCE; HAS BEAUTIFUL COLOR)</p> <p><u>1400</u> 22. N PEACOCKS PLATE WITH RIBBED EXTERIOR - ICE BLUE (VERY RARE ITEM; AVERAGE COLOR; NICE)</p> <p><u>525</u> 23. N PEACOCKS PLATE WITH RIBBED EXTERIOR - WHITE (VERY DESIRABLE; MULTI-COLORED IRID.)</p> <p><u>950</u> 24. N PEACOCKS PLATE WITH RIBBED EXTERIOR - ELEC. BLUE (FANTASTIC BLUE IRID. AND EXTREMELY DESIRABLE)</p> <p><u>1000</u> 25. N PEACOCKS PLATE WITH RIBBED EXTERIOR - LAVENDER (VERY RARE; HAS GREAT PINK AND BLUE COLOR)</p> <p>_____ 26. N PEACOCKS PLATE WITH RIBBED EXTERIOR - MARI. (GREAT ITEM WITH "ART LUSTRE" QUALITY; NICE)</p> <p>_____ 27. N Butterfly Two Handled Bon Bon with Spiral Exterior - Pur. (great color)</p> <p><u>300</u> 28. N POINSETTIA AND LATTICE FTD. RUFFLED BOWL - ELEC. BLUE (VERY DESIRABLE WITH EXCELLENT COLOR; HAS MANUF. FLAW ON ONE POINT)</p> <p><u>425</u> 29. N POINSETTIA AND LATTICE FTD. RUFFLED BOWL - PASTEL MARI. (VERY NICE ITEM; HAS PINK AND BLUE IRID.)</p> <p><u>1150</u> 30. N EMBROIDERED MUMS TWO HANDLED STEMMED BON BON - WHITE (EXTREMELY RARE ITEM; PERFECT WITH PINK HIGHLIGHTS)</p> <p><u>3400</u> 31. N EMBROIDERED MUMS RUFFLED BOWL WITH RIBBED EXTERIOR - AQUA OPAL. (VERY RARE ITEM WITH NICE PASTEL IRID. MORE BLUE OPAL. THAN AQUA OPAL.)</p> <p><u>3250</u> 32. N EMBROIDERED MUMS RUFFLED BOWL WITH RIBBED EXTERIOR - LIME GREEN OPAL. SLAG (EXTREMELY RARE ITEM WITH AN ODD TEXTURE; HAS A SLAG EFFECT)</p> |
|---|---|



- 800 33. N EMBROIDERED MUMS RUFFLED BOWL WITH RIBBED EXTERIOR - ICE BLUE (VERY RARE ITEM; HAS VERY NICE COLOR)
34. N EMBROIDERED MUMS RUFFLED BOWL WITH RIBBED EXTERIOR - AQUA (EXTREMELY RARE COLOR; HAS TINY FLAKE ON ONE POINT)
- 550 35. N EMBROIDERED MUMS RUFFLED BOWL WITH RIBBED EXTERIOR - LAVENDER (ABSOLUTELY SUPER ITEM WITH UNUSUAL TINGE; HAS SMALL FLAKE ON BACK OF ONE POINT)
- 1000 36. N EMBROIDERED MUMS RUFFLED BOWL WITH RIBBED EXTERIOR - HOREHOUND (EXTREMELY RARE COLOR AND IS UNUSUAL; NICE)
37. N EMBROIDERED MUMS RUFFLED BOWL WITH RIBBED EXTERIOR - PUR. (DARK COLOR AND SCARCE; HAS 1 OR 2 PIN-HEADS)
38. N EMBROIDERED MUMS RUFFLED BOWL WITH RIBBED EXTERIOR - MARI. (VERY SCARCE AND UNDERATED; GREAT COLOR)
- 2850 39. N HEART AND FLOWERS PLATE WITH RIBBED EXTERIOR - WHITE (EXTREMELY RARE; GREAT GOLDS AND PINKS)
- 4500 40. N HEART AND FLOWERS PLATE WITH PLAIN EXTERIOR - ICE GREEN (EXTREMELY RARE AND DESIRABLE; FANTASTIC IRID.)
- 700 41. N HEART AND FLOWERS PLATE WITH RIBBED EXTERIOR - ICE BLUE (VERY RARE; HAS 1/2" FLAKE ON OUTER EDGE)
- 1050 42. N HEART AND FLOWERS RUFFLED BOWL WITH RIBBED EXTERIOR - AQUA WITH OPAL. TIPS (EXTREMELY RARE HAS LIGHT BUTTERSCOTCH IRID.; OPAL. TIPS AND SWIRL EFFECT.)
- 950 43. N HEART AND FLOWERS RUFFLED BOWL WITH RIBBED EXTERIOR - ICE GREEN (VERY RARE; HAS NICE COLOR AND QUALITY)
44. N HEART AND FLOWERS RUFFLED BOWL WITH RIBBED EXTERIOR - ICE BLUE (VERY SCARCE AND HAS NICE COLOR)
45. N HEART AND FLOWERS RUFFLED BOWL WITH PLAIN EXTERIOR - WHITE (VERY SCARCE WITH GOOD COLOR)
- 450 46. N HEART AND FLOWERS RUFFLED BOWL WITH RIBBED EXTERIOR - PUR. (GREAT COLOR AND QUALITY FOR A SCARCE ITEM)
47. N HEART AND FLOWERS RUFFLED BOWL - DK. MARI. (VERY SCARCE; HAS NICE DARK COLOR)
- 800 48. N HEART AND FLOWERS STEMMED COMPOTE - ICE GREEN (VERY RARE; PLAIN EXTERIOR; HAS VERY SMALL FLAKE ON MOLD LINE)
- 225 49. N HEART AND FLOWERS STEMMED COMPOTE - ICE BLUE (VERY SCARCE; LIGHT COLOR; SMALL FLAKE ON BASE)
- 800 50. N HEART AND FLOWERS STEMMED COMPOTE - AQUA OPAL. (RARE; HAS RIBBED EXTERIOR; SLIGHT BUTTERSCOTCH AND NICE)
- 135 51. N HEART AND FLOWERS STEMMED COMPOTE - WHITE (VERY SCARCE; HAS OPEN BUBBLE ON BASE)
- 500 52. N HEART AND FLOWERS STEMMED COMPOTE - BLUE (VERY DESIRABLE; HAS ODD COBALT TINT)
- 800 53. N HEART AND FLOWERS STEMMED COMPOTE - PUR. (BRIGHT IRID.; VERY RARE)
- 300 54. N HEART AND FLOWERS STEMMED COMPOTE - DK. MARI. (NICE DARK COLOR)
- 625 55. N BLOSSOMTIME STEMMED COMPOTE - GREEN (VERY RARE; BRIGHT MULTI-COLORED IRID.)
- 375 56. N Blossomtime Stemmed Compote - Amy. (rare; has exceptional irid.)
57. N Blossomtime Stemmed Compote - Dk. Mari. (scarce with bright color and irid.)
58. N Petals Ruffled Compote - Green
59. N Petals Ruffled Compote - Mari. (dark color)
- 310 60. N HARVEST POPPY STEMMED COMPOTE - MARI. (VERY SCARCE WITH NICE COLOR)
- 400 61. N GRAPE ARBOR RUFFLED HAT - ICE GREEN (VERY RARE; VERY GOOD COLOR AND IRID.)
- 160 62. N GRAPE ARBOR RUFFLED HAT - WHITE (NICE AND FROSTY)
63. N Grape Arbor Ruffled Hat - Dk. Mari. (good dark color)
64. N Grape Arbor Ruffled Hat - Blue (rare color but cracked across base)
- 1200 65. N POPPY RELISH TRAY - AQUA OPAL. (VERY RARE WITH EXCELLENT PASTEL COLOR AND OPAL.)
- 700 66. N POPPY RELISH TRAY - ICE BLUE (VERY RARE AND HAS NICE QUALITY)
- 500 67. N POPPY RELISH TRAY - WHITE (VERY RARE COLOR AND EXTREMELY DESIRABLE)
- 325 68. N POPPY RELISH TRAY - GREEN (RARE COLOR; HAS BRIGHT YELLOWS AND BLUES)
69. N Poppy Relish Tray - Blue (good quality color)
- 650 70. N ROUND BUSHEL BASKET - MINT ICE GREEN (A VERY RARE AND UNUSUAL COLOR)
71. N Round Bushel Basket - Elec. Blue (very scarce; a beauty)
72. N Round Bushel Basket - Dk. Mari. (scarce; has dark color)
- 800 73. N DAISY AND PLUME FTD. RUFFLED CANDY DISH WITH BLACKBERRY INTERIOR - MINT ICE GREEN (A RARE AND BEAUTIFUL ITEM; PERFECT)



- 725 74. N DAISY AND PLUME FTD. RUFFLED CANDY DISH WITH BLACKBERRY INTERIOR - ICE BLUE (A BEAUTIFUL ITEM; HAS SLIGHT ROUGHNESS ON FEET)
- 1000 75. N LEAF AND BEADS FTD. ROSE BOWL - LAVENDER (EXTREMELY RARE COLOR; UNBELIEVABLE ITEM - ONE OF MY FAVORITES)
- 1400 76. N LEAF AND BEADS FTD. ROSE BOWL - ICE BLUE - A RARE AND PERFECT ITEM WITH GREAT COLOR)
- 700 77. N LEAF AND BEADS FTD. ROSE BOWL WITH FLORAL INTERIOR - TEAL (RARE AND UNUSUAL; HAS DAMAGE ON ONE FOOT)
- \_\_\_\_\_ 78. N Leaf and Beads ftd. Rose Bowl - Pur. (beautiful item)
- \_\_\_\_\_ 79. N Leaf and Beads ftd. Rose Bowl - Elec. Blue (very nice; manuf. flake; irid. at factory)
- \_\_\_\_\_ 80. N Leaf and Beads ftd. Rose Bowl - Mari.
- \_\_\_\_\_ 81. N FINE CUT AND ROSES FTD. RUFFLED CANDY DISH - WHITE (VERY GOOD COLOR AND PERFECT)
- \_\_\_\_\_ 82. N Fine Cut and Roses ftd. Ruffled Candy Dish - Ice Green (rare color; has large flake off one foot)
- \_\_\_\_\_ 83. N Fine Cut and Roses ftd. Ruffled Candy Dish - Ice Blue (scarce; has small flake on one foot)
- \_\_\_\_\_ 84. N Fine Cut and Roses ftd. Rose Bowl - Green (perfect and nice)
- 1050 85. N BEADED CABLE FTD. ROSE BOWL - ICE GREEN (EXTREMELY RARE; FROSTY COLOR AND NICE)
- 300 86. N BEADED CABLE FTD. ROSE BOWL - AQUA OPAL. (RARE; HAS BUTTERSCOTCH OVERLAY)
- \_\_\_\_\_ 87. N Beaded Cable ftd. Rose Bowl - Mari.
- \_\_\_\_\_ 88. N Raspberry ftd. Occasional Sauce or Gravy - Teal (rare; has roughness on one foot)
- 325 89. N GRAPE ARBOR TANKARD WATER PITCHER - DK. MARI. (GREAT COLOR FOR AN UNDERATED ITEM)
- 1300 90. N ROSE SHOW VARIANT PLATE - DK. MARI. (RARE AND EXTREMELY DESIRABLE; HAS BEAUTIFUL DARK COLOR)
- 825 91. N ROSE SHOW VARIANT RUFFLED BOWL - BLUE (RARE AND ONE OF THE FINEST EXAMPLES; HAS BLUE HIGHLIGHTS)
- 750 92. 9" N POPPY SHOW PLATE - MARI. (VERY DESIRABLE; HAS DEEP MARI. LUSTRE)
- 425 93. 8 1/2 - 9" N ROSE SHOW RUFFLED BOWL - PUR. (VERY DESIRABLE WITH MULTI-COLORED IRID.)
- 525 94. N G & C STIPPLED SMALL SIZE FTD. FRUIT BOWL - ELEC. BLUE (SUPER COLOR ON A REAL QUALITY ITEM)
- 1100 95. N G & C SMALL SIZE FTD. FRUIT BOWL - ICE BLUE (VERY RARE; HAS DEEP COLOR AND GREAT IRID.)
- \_\_\_\_\_ 96. N G & C Small Size ftd. Fruit Bowl - Green (very scarce with nice color)
- \_\_\_\_\_ 97. N G & C Covered Powder Jar - Dk. Mari. (scarce; roughness on rim of base and lid)
- \_\_\_\_\_ 98. N G & C Cologne Bottle and Stopper - Dk. Mari. (scarce item)
- \_\_\_\_\_ 99. N G & C Large Dresser Tray - Mari. (scarce)
- 1900 100. N G & C FTD. HATPIN HOLDER - ICE BLUE (EXTREMELY RARE; PERFECT AND BEAUTIFUL)
- 2700 101. 9" N G & C STIPPLED RUFFLED BOWL WITH RIBBED EXTERIOR - ICE GREEN (EXTREMELY RARE AND A LOVELY EXAMPLE)
- 1400 102. 9" N G & C STIPPLED BOWL WITH PIE CRUST EDGE - ICE BLUE (VERY RARE AND A BEAUTIFUL EXAMPLE)
- \_\_\_\_\_ 103. 9" N G & C VARIANT BOWL WITH PIE CRUST EDGE - ELEC. BLUE (GREAT IRID. AND VERY DESIRABLE)
- \_\_\_\_\_ 104. 9" N G & C STIPPLED RUFFLED BOWL WITH RIBBED EXTERIOR - GREEN (VERY SCARCE ITEM WITH BEAUTIFUL COLOR)
- 1500 105. 9" N G & C VARIANT STIPPLED PLATE WITH RIBBED EXTERIOR - AQUA / TEAL (VERY RARE; HAS FANTASTIC BLUE IRID.; SMALL CHIP ON COLLAR BASE)
- 600 106. N G & C LARGE ICE CREAM BOWL - PUR. (VERY SCARCE; BRIGHT BLUE AND RED IRID.)
- 600 107. N G & C 2 PC. CANDLELAMP - MARI. (VERY RARE; ONE OF THE BETTER EXAMPLES)
- 375 108. N CORN VASE WITH STALK BASE - ICE GREEN (VERY SCARCE; HAS GREAT COLOR - BLUES AND PINKS)
- \_\_\_\_\_ 109. N Drapery Swung Vase - White (very scarce; good frosty color)
- 600 110. N DAISY AND DRAPE FTD. VASE - AQUA OPAL. (A LOVELY ITEM; MARI. OVERLAY INSIDE; NICE OPAL.)
- 325 111. N DAISY AND DRAPE FTD. FLARED VASE - BLUE (VERY SCARCE AND DESIRABLE; A BEAUTIFUL EXAMPLE)
- 300 112. N DAISY AND DRAPE FTD. VASE - MARI. (EXTREMELY SCARCE ITEM; DARK COLOR TOP TO BOTTOM)
- 600 113. N DIAMOND POINT SWUNG VASE - AQUA OPAL. (VERY RARE; HAS NICE BUTTERSCOTCH AND THICK OPAL.)
- 400 114. N DIAMOND POINT SWUNG VASE - DK. TEAL (VERY RARE COLOR FOR A DESIRABLE ITEM)
- 300 115. N DIAMOND POINT SWUNG VASE - ICE GREEN (VERY RARE WITH GREAT COLOR)
- \_\_\_\_\_ 116. N DIAMOND POINT SWUNG VASE - ICE BLUE (RARE WITH GOOD COLOR)
- \_\_\_\_\_ 117. N Diamond Point Swung Vase - Blue (very scarce with gold irid.)
- 185 118. 10 1/2" N LEAF COLUMNS SWUNG VASE - ICE BLUE (VERY SCARCE; LIGHT COLOR)
- 275 119. WESTMORELAND CORINTH JACK IN THE PULPIT VASE - BLUE OPAL. (SCARCE; HAS OPAL. TO THE BASE AND MARI. OVERLAY)



- 425 120. N TREE TRUNK SWUNG VASE - AQUA OPAL. (VERY RARE AND DESIRABLE; THICK OPAL. AND NICE BUTTERSCOTCH)
- 150 121. 6 1/2" N TREE TRUNK SQUATTY VASE - MINT ICE GREEN (RARE WITH ODD TINGE; HAS SMALL FLAKES AT BASE)
- 215 122. 7 1/4" N TREE TRUNK SQUATTY VASE - ICE BLUE (LIGHT COLOR AND VERY RARE)
- 460 123. 7 1/4" N TREE TRUNK SQUATTY VASE - WHITE (RARE SIZE WITH GOOD COLOR)
124. 7 3/4" N TREE TRUNK SQUATTY VASE - ELEC. BLUE (VERY SCARCE WITH FANTASTIC COLOR)
- 550 125. FENTON RUSTIC FUNERAL VASE - WHITE (GOOD FROSTY ITEM THAT'S GETTING TOUGH TO FIND)
- 325 126. DUGAN BIG BASKETWEAVE SWUNG VASE - SAPPHIRE BLUE (VERY RARE COLOR; SILVERY IRID.)
127. DUGAN BIG BASKETWEAVE SWUNG VASE - WHITE (BEAUTIFUL COLOR)
128. 10 1/4" N THIN RIB SWUNG VASE - SAPPHIRE BLUE (VERY RARE COLOR AND DESIRABLE)
129. 13 1/4" N THIN RIB SWUNG VASE - VASELINE (VERY RARE COLOR FOR THIS ITEM)
130. 11" N THIN RIB SWUNG VASE - ICE GREEN (VERY SCARCE)
131. 10 1/2" N THIN RIB SWUNG VASE - ICE BLUE (VERY SCARCE)
- 950 132. N SPRINGTIME 4 PC. TABLE SET - GREEN (PERFECT AND BEAUTIFUL; VERY RARE SET)
133. N SPRINGTIME 4 PC. TABLE SET - MARI. (VERY RARE SET; PERFECT WITH GREAT DARK COLOR)
- 425 134. N SUNFLOWER FTD. 8 RUFFLED BOWL - RENNINGER BLUE (VERY RARE COLOR; HAS AN ODD TINGE)
- 2150 135. N SUNFLOWER FTD. 8 RUFFLED BOWL - ICE BLUE (AN EXQUISITE EXAMPLE THAT'S ONE OF ONLY A FEW KNOWN - A REAL QUALITY ITEM)
- 875 136. N WISHBONE FTD. RUFFLED BOWL - WHITE (VERY SCARCE; HAS GOOD COLOR AND IRID.)
- 700 137. N WISHBONE FTD. PLATE - MARI. (VERY RARE; MULTI-COLORED PASTEL IRID.)
138. 6 1/4" Fenton Sailboats Ruffled Sauce - Green (nice color and scarce)
139. 6 1/2" FENTON CHERRY CHAIN PLATE WITH ORANGE TREE EXTERIOR - GREEN (FANTASTIC COLOR AND IRID.; GREAT ITEM)
- 2000 140. 9" FENTON THISTLE PLATE - GREEN (EXTREMELY RARE; HAS GREAT MULTI-COLORED IRID.)
- 3500 141. 9" FENTON THISTLE PLATE - MARI. (A FANTASTIC ITEM; HAS BEAUTIFUL SATIN FINISH AND IS ONE OF THREE KNOWN)
142. 10" Fenton Stag and Holly Large Ice Cream Shaped ftd. Bowl - Mari. (good color)
143. Fenton Horsehead Medallion ftd. Ruffled Bowl - Green (great color on a scarce item)
144. 9" Fenton Leaf Chain Plate - Dk. Mari. (very nice dark color)
- 1700 145. 9" FENTON ORANGE TREE RUFFLED BOWL - RED (VERY RARE; A BRIGHT MID-RED; A GREAT ITEM)
146. 8 1/2" Fenton Persian Medallion Ice Cream Shaped Bowl - Mari. / Vaseline (rare item but has flake off base)
147. Fenton Blackberry Two Row Open Edge Hat - Blue (flake on edge)
148. FENTON KITTENS TWO SIDED BANANA BOAT - MARI. (VERY SCARCE HAS GREAT DETAIL)
- 395 149. IMPERIAL CORN BOTTLE - DK. MARI. (GREAT COLOR AND VERY SCARCE)
- 925 150. WIDE PANEL PENNY STICK MATCH HOLDER WITH ORIGINAL BOX OF MATCHES - PUR. (EXTREMELY RARE NOVELTY; HAS ORIGINAL BOX OF BULLS EYE SAFETY MATCHES)
151. Imperial Flute Breakfast Sugar and Creamer - Pur. (good color; sold as set)
152. 9 1/2" IMPERIAL EMBOSSED SCROLL PLATE - PUR. (GREAT MULTI-COLORED IRID.)
153. Imperial Freeblown Art Glass Vase - Mari. / Milk Glass
154. Imperial Ripple Mid-Size Funeral Vase - Mari.
- 700 155. 7 1/4" TALL X 4 3/4" BASE IMPERIAL ZIPPER LOOP KEROSENE LAMP - MARI. (VERY RARE AND DESIRABLE)
156. Imperial Tulip and Cane Stemmed Wine Glass - Mari. (pinhead on base; scarce)
157. M'burg Holly Sprig Two Handled Deep Round Bon Bon - Amy. (radium finish)
158. M'BURG HOBNAIL ROSE BOWL - AMY. (SILVERY - GOLD RADIUM IRID.; RARE)
- 475 159. M'BURG WHIRLING LEAVES TRI-CORNERED TIGHT CRIMPED EDGE BOWL - AMY. (VERY SCARCE AND HAS RADIUM FINISH)
- 3300 160. M'BURG FLEUR DE LEIS DOMED ROSE BOWL - PUR. (VERY RARE SHAPE WITH FANTASTIC IRID.; A SUPER ITEM)
- 825 161. M'BURG TROUT AND FLY SQUARE BOWL - LT. MARI. (VERY RARE WITH A LIGHT SATIN FINISH)
- 575 162. 9 1/4" M'BURG TROUT AND FLY 6 RUFFLED BOWL - AMY. (RARE WITH A HIGH RADIUM FINISH)
163. 9" M'BURG TROUT AND FLY BOWL WITH 3 IN 1 EDGE - MARI. (SATINY IRID.; NICE AND VERY SCARCE)
164. 6" M'burg Peacock at the Urn Sauce - Amy. (satiny finish; no bee, no beads)

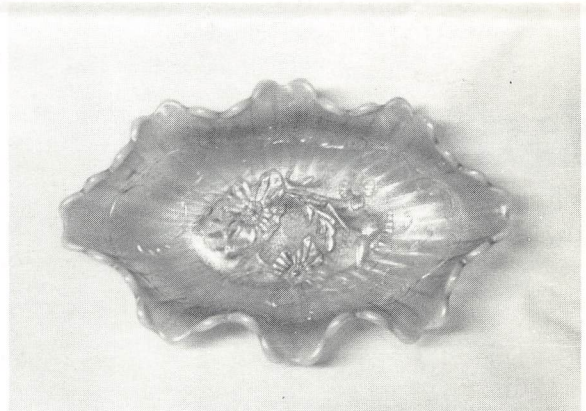
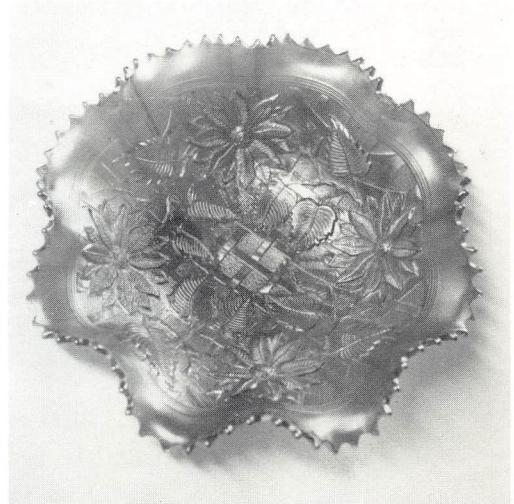


- \_\_\_\_\_ 165. 9" M'BURG PEACOCK AT THE URN BOWL WITH 3 IN 1 EDGE - GREEN (VERY SCARCE; HAS NICE SATINY FINISH)
- 1300 166. N GRAPE LEAVES RUFFLED BOWL - ICE BLUE (EXTREMELY RARE; ONE OF THE BETTER EXAMPLES; GREAT IRID.)
- \_\_\_\_\_ 167. N Grape Leaves Ruffled Bowl - Pur.
- 3000 168. N NIPPON BOWL WITH PIE CRUST EDGE AND RIBBED EXTERIOR - ICE GREEN OPAL. (EXTREMELY RARE ITEM WITH FANTASTIC IRID.; OPAL. ON POINTS)
- 350 169. N NIPPON BOWL WITH PIE CRUST EDGE AND RIBBED EXTERIOR - ICE BLUE (VERY SCARCE WITH BEAUTIFUL IRID.)
- 2200 170. N GOOD LUCK RUFFLED BOWL WITH RIBBED EXTERIOR - AQUA OPAL. (VERY RARE AND BEAUTIFUL; MORE BLUE OPAL. IN COLOR; NICE)
- \_\_\_\_\_ 171. N GOOD LUCK PLATE WITH BASKETWEAVE EXTERIOR - PUR. (VERY DESIRABLE; HAS FANTASTIC IRID.)
- \_\_\_\_\_ 172. N Good Luck Ruffled Bowl with Basketweave Exterior - Pur. (scarce with nice red and blue irid.)
- \_\_\_\_\_ 173. N GOOD LUCK BOWL WITH PIE CRUST EDGE - ELEC. BLUE (GREAT COLOR AND VERY DESIRABLE)
- \_\_\_\_\_ 174. N GOOD LUCK STIPPLED RUFFLED BOWL WITH RIBBED EXTERIOR - GREEN (LIME - GREENISH TINGE; HAS EPOXIED BASE AND IS ROUGH ON EDGE)
- \_\_\_\_\_ 175. N Good Luck Stippled Bowl with Pie Crust Edge and Ribbed Exterior - Pastel Mari. (very nice irid.; has a sharp edge)
- \_\_\_\_\_ 176. N Good Luck Bowl with Pie Crust Edge and Ribbed Exterior - Dk. Mari. (scarce; has reddish irid.)
- \_\_\_\_\_ 177. WESTMORELAND SCALES TRI-CORNERED BOWL - P. OPAL. (RARE SHAPE FOR THIS ITEM)
- \_\_\_\_\_ 178. Dugan S Repeat Creamer from Punch Cup - Amy. (scarce with nice color)
- 400 179. 8 1/2" DUGAN APPLE BLOSSOM TWIG LOW ICE CREAM SHAPED BOWL - SMOKEY / LAVENDER (VERY ODD COLOR AND RARE)
- 1700 180. DUGAN DOUBLE STEM ROSE DOMED FTD. RUFFLED BOWL - ICE GREEN (EXTREMELY RARE AND BEAUTIFUL; ONLY ONE I'VE EVER SEEN - A KEY ITEM)
- 900 181. 8 1/2 - 9" DUGAN FANCIFUL RUFFLED PLATE - PUR. (AN ABSOLUTELY BEAUTIFUL EXAMPLE - REDS AND BLUES)
- 475 182. 10" DUGAN FOUR FLOWERS CHOP PLATE - P. OPAL. (VERY RARE; NICE COLOR; HAS PLAIN EXTERIOR)
- \_\_\_\_\_ 183. 6" Dugan Four Flowers Plate - P. Opal. (flat, good opal.; light irid.)
- \_\_\_\_\_ 184. 6 1/2" Dugan Flowers and Beads Exterior Plate - P. Opal. (turned up on edge)
- \_\_\_\_\_ 185. NAUTILUS OPEN SUGAR - SIGNED IN SCRIPT - P. OPAL. (VERY RARE; HAS GOOD OPAL.)
- \_\_\_\_\_ 186. Dugan Soutache 6 Ruffled Domed Bowl - P. Opal. (very scarce; good opal. and dark Mari.)
- \_\_\_\_\_ 187. Dugan Six Petals Tri-Cornered Bowl - P. Opal. (great opal.)
- \_\_\_\_\_ 188. Dugan Flowers and Frames Domed Tri-Cornered Crimped Bowl - P. Opal. (very scarce item)
- \_\_\_\_\_ 189. Dugan Ski Star Domed Tri-Cornered Bowl - P. Opal.
- \_\_\_\_\_ 190. Dugan Caroline Tri-Cornered Bowl - P. Opal.
- \_\_\_\_\_ 191. Dugan Stippled Flower Tri-Cornered Bowl - P. Opal.
- \_\_\_\_\_ 192. Dugan Open Opals Tri-Cornered Compote - P. Opal. (scarce)
- \_\_\_\_\_ 193. Dugan Ribbed Tri-Cornered Vase - P. Opal. (small hairline at top)
- \_\_\_\_\_ 194. N Strawberry Plate - Amy. (good satiny color; is a bit crooked)
- 700 195. N STRAWBERRY STIPPLED PLATE WITH RIBBED EXTERIOR - DK. MARI. (BRILLIANT COLOR AND IRID.; GREAT EXAMPLE)
- 1500 196. N STRAWBERRY STIPPLED BOWL WITH PIE CRUST EDGE AND RIBBED EXTERIOR - ELEC. BLUE (FANTASTIC COLOR AND EXTREMELY DESIRABLE)
- 1350 197. N STRAWBERRY STIPPLED RUFFLED BOWL WITH BASKETWEAVE EXTERIOR - WHITE (EXTREMELY RARE PATTERN COMBINATION; A GREAT ITEM THAT WEIGHS A TON, NICE COLOR)
- 1700 198. N STRAWBERRY STIPPLED RUFFLED BOWL WITH RIBBED EXTERIOR - DK. RENNINGER BLUE (FANTASTIC ITEM - ONE OF THE BETTER EXAMPLES OF THIS ITEM)
- \_\_\_\_\_ 199. N Three Fruits Plate with Plain Exterior - Green (a beautiful item; has tiny flake on base)
- 4500 200. N THREE FRUITS STIPPLED PLATE WITH RIBBED EXTERIOR - LIME GREEN / MARI. (EXTREMELY RARE COLOR AND VERY UNUSUAL; ONE OF ONLY A COUPLE KNOWN)
- 3800 201. N THREE FRUITS STIPPLED PLATE WITH RIBBED EXTERIOR - DK. TEAL (AN EXTREMELY DESIRABLE ITEM WITH FANTASTIC COLOR)
- 1050 202. N THREE FRUITS STIPPLED PLATE WITH RIBBED EXTERIOR - LAVENDER (VERY SCARCE AND HAS PINK AND BLUE HIGHLIGHTS)
- \_\_\_\_\_ 203. N THREE FRUITS STIPPLED PLATE WITH RIBBED EXTERIOR - PUR. (SCARCE; HAS BRONZE IRID.)
- \_\_\_\_\_ 204. N THREE FRUITS STIPPLED PLATE WITH RIBBED EXTERIOR - MARI. (GOOD COLOR; HAS SMALL FLAT FLAKE ON EDGE)
- 825 205. N THREE FRUITS STIPPLED RUFFLED BOWL WITH RIBBED EXTERIOR - AQUA OPAL. (EXCELLENT PASTEL FINISH AND RARE; HAS A FEW FLAT POINTS - SOME WITH CINDER)

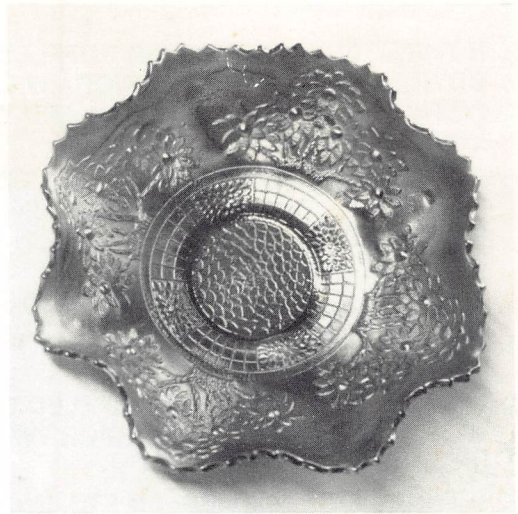
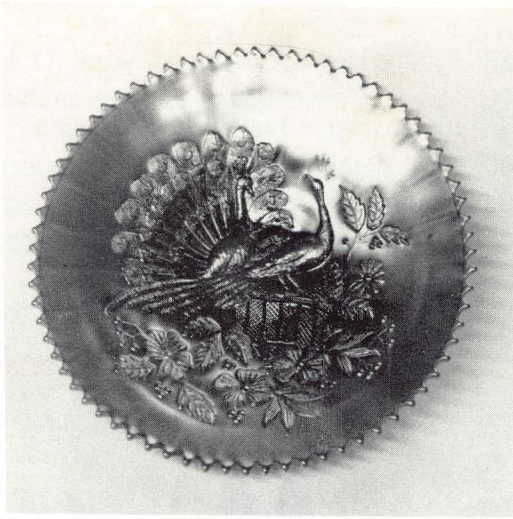


- 425 206. **N THREE FRUITS STIPPLED RUFFLED BOWL WITH RIBBED EXTERIOR - WHITE (VERY RARE; HAS NICE PINKS AND YELLOWS)**
- 775 207. **N THREE FRUITS STIPPLED RUFFLED BOWL WITH RIBBED EXTERIOR - DK. LAVENDER (VERY SCARCE; NICE MULTI-COLORED FINISH)**
- \_\_\_\_\_ 208. **N Three Fruits Stippled Ruffled Bowl With Ribbed Exterior - Dk. Mari. (scarce; beautiful pink irid.)**
- \_\_\_\_\_ 209. **N THREE FRUITS DOMED RUFFLED BOWL WITH BASKETWEAVE EXTERIOR - WHITE (SCARCE; GREAT COLOR)**
- 900 210. **N THREE FRUITS STIPPLED FTD. RUFFLED BOWL WITH MEANDER EXTERIOR - ICE GREEN (VERY RARE; GREAT EXAMPLE WITH EXCELLENT COLOR)**
- \_\_\_\_\_ 211. **N THREE FRUITS STIPPLED FTD. RUFFLED BOWL WITH MEANDER EXTERIOR - WHITE (GREAT COLOR ON A RARE ITEM; PINHEAD FLAKE ON ONE EDGE)**
- \_\_\_\_\_ 212. **N Three Fruits ftd. Ruffled Bowl with Meander Exterior - Pur. (outstanding color)**
- \_\_\_\_\_ 213. **5 1/2 - 6" N Fruits and Flowers Individual Ruffled Berry Bowl - Green**
- 1100 214. **10 - 10 1/2" N FRUITS AND FLOWERS LARGE RUFFLED MASTER BERRY BOWL - ICE GREEN (EXTREMELY RARE; HAS BASKETWEAVE EXTERIOR WITH FANTASTIC COLOR)**
- 25 215. **N FRUIT AND FLOWERS STEMMED BON BON - ICE GREEN (VERY RARE AND NICE; HAS SOME ROUGHNESS AT EDGE AND BASE)**
- 400 216. **N FRUIT AND FLOWERS STEMMED BON BON - WHITE (VERY RARE; GOOD FROSTY COLOR AND IRID.)**
- \_\_\_\_\_ 217. **N FRUIT AND FLOWERS STEMMED BON BON - ELEC. BLUE (EXCELLENT COLOR AND QUALITY)**
- \_\_\_\_\_ 218. **N Fruit and Flowers Stemmed Bon Bon - Pur. (deep color with blue irid.)**
- \_\_\_\_\_ 219. **N Fruit and Flowers Stemmed Bon Bon - Green (has bent handle)**
- \_\_\_\_\_ 220. **N Fruit and Flowers Stemmed Bon Bon - Amy. (nice color has chip on base)**
- \_\_\_\_\_ 221. **N Fruit and Flowers Stemmed Bon Bon - Dk. Mari. (nice)**
- 500 222. **N FRUIT AND FLOWERS STIPPLED STEMMED BON BON - GREEN (VERY RARE; HAS MARI. OVERLAY)**
- \_\_\_\_\_ 223. **N Fruit and Flowers Stippled Stemmed Bon Bon - Dk. Mari. (good color)**
- \_\_\_\_\_ 224. **N Stippled Rays 7 pc. Ruffled Berry Set - Emerald Green (a beautiful set)**
- \_\_\_\_\_ 225. **Assortment of Carnival Glass Buttons - Dark**
- \_\_\_\_\_ 226. **(2) Imperial Royalty Punch Cups - Mari. (sold per each)**
- \_\_\_\_\_ 227. **Iris and Herringbone Water Pitcher - Lt. Mari.**

- \_\_\_\_\_ 228. **Iris and Herringbone Large Vase - Lt. Mari.**
- \_\_\_\_\_ 229. **Hobnail Town Pump, has Pontil on Base - Pur. (purchased in 1968: Age? Hansen?)**
- \_\_\_\_\_ 230. **1976 HOACGA Decanter and Stopper - Red**
- \_\_\_\_\_ 231. **Fenton Lattice and Grape Tumbler - Mari.**
- \_\_\_\_\_ 232. **(7) New Reproduction Toothpick Holders - Assorted Colors (sold separately)**







109 E. Steuben St.  
Bath, N.Y. 14810

First Class  
US Postage  
**PAID**  
Permit #7  
Hammondsport, NY