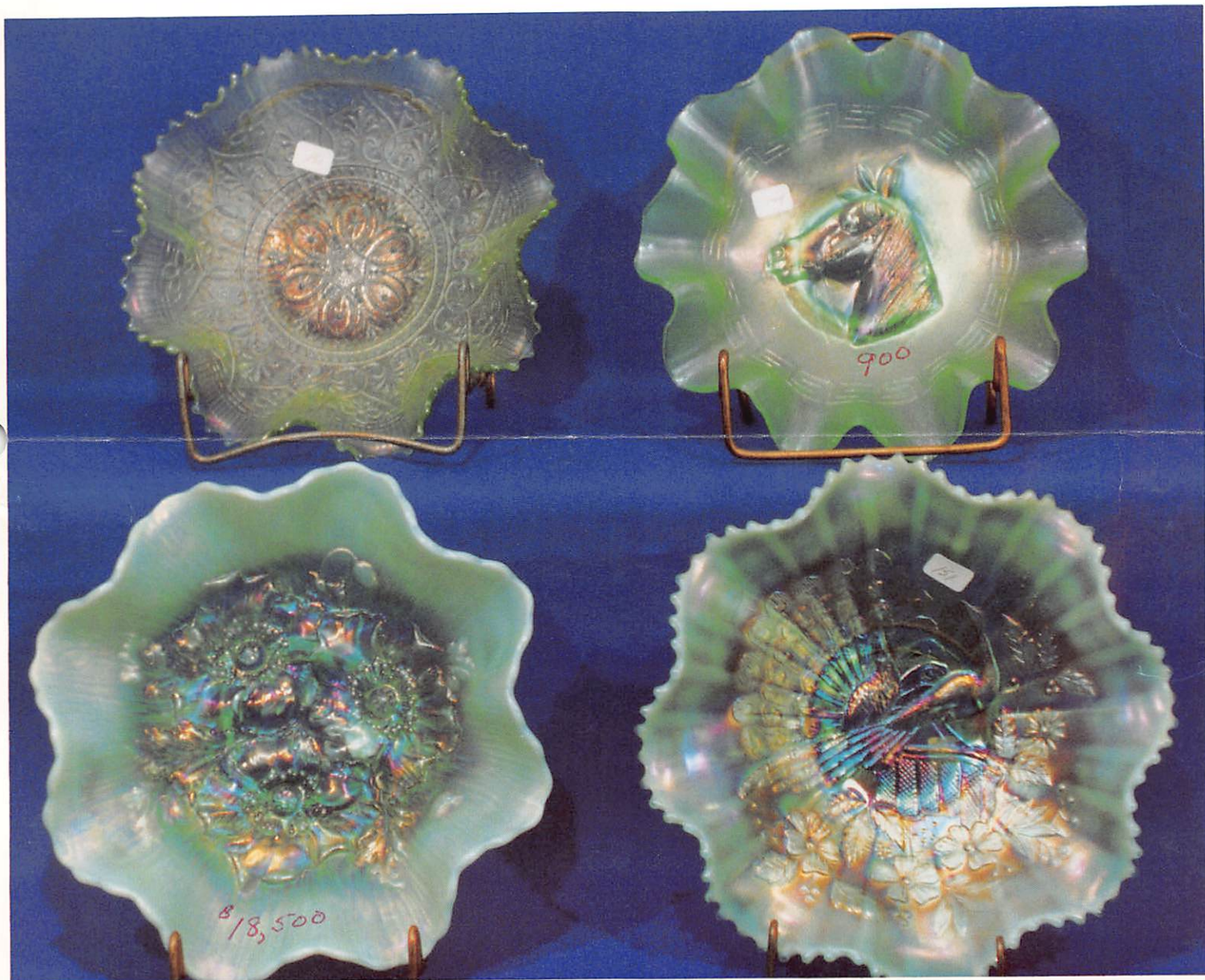


AUCTION



Fri. & Sat., Nov. 17 & 18, 1989

Harley Hotel (I-70 at Exit #231) — ST. LOUIS, MO

Custard Glass: Chrysanthemum Sprig creamer, sugar, berry dishes and spooner; Maple Leaf 4-pc. table set; assorted tumblers - Grape & Cable, Argonaut Shell, Chrysanthemum Sprig; also small compotes; salt and pepper; nappy; pitcher; vases; souvenir items; and other Custard Glass.

Opalescent Pressed Glass; approximately 80 pieces colored glassware; **seven glass canes** - 35" to 50"; blue Button & Daisy Pattern Glass; assorted Bird & Strawberry Pattern Glass; pair blue glass whale oil lamps; 9-pc. Bohemian wine set; **Tiffany Favrite** signed base for electric lamp; much, much more.



ESTATE

ATION



17, 1989 - 7:00 p.m.

18, 1989 - 9:30 a.m.

at Earth City Exit #231
(near St. Charles)

MISSOURI

LIS WHITWORTH



Oriental Items: Large solid brass Chinese temple incense burner, 20" long x 14½" ht. x 12½" w., with Lotus Flowers on a Leaf-style base (cleaned and polished); pair 12" cloisonne and bronze unicorn-type figures facing each other while holding a 7" x 4" solid bronze bell mounted on a 20" x 10" cloisonne and bronze plateau; 13" cloisonne and bronze vase; **Celadon** ginger jar; teapot; Oriental ginger jars; pair Chinese bronze incense burners w/figure; Satsuma teapots and vases; blue & white Oriental items; Cinnabar vases and boxes; carved soapstone; handcarved bamboo; cloisonne/jade cigarette set; handcarved lacquer boxes w/jade medallions; carved ivory figures; assorted small cloisonne items; cloisonne vases; Fishscale vases; illustration kit on cloisonne process; Rose Medallion fruit bowl w/underplate; Chinese chargers - 12", 15½" and 18".

Teakwood lady's dressing chest w/inlay of brass and mother of pearl; jade mineral plant; Nippon items; Satsuma tea sets; rice set; Rose Medallion oblong bowl and vase; 32 Rose Medallion plates; nine carved ivory netsukes; assorted Oriental porcelain.

Also Selling:

Paintings: oils on canvas - Mountain & Lake scenes, 27" x 22", signed John Murphy; 25" x 42" oil on canvas "Schooner" signed H.R. Buttram; oil on canvas "The Storm" signed F. Filmer; 26" x 32" oil on canvas "Sheep in the Meadow" signed Wm. Derrick; unsigned oil on canvas Snow Scene; oil on canvas "Trees & Stream" signed Gilmore; 16" x 12" oil "Tree & Mountain" signed Walter Lee; 16" x 12" oil "Mountain Scene" signed Edith Sowarby; 36" x 27" oil on canvas "Forest Scene" signed W.R. Derrick; 16" x 20" oil "Roses Still Life" signed BJL; 12" x 9" oil "Dutch Scene"; 12" x 10" watercolor "Windmill Scene" signed N. Vanderville; 16" x 20" oil on board "Tree & Mountain" signed Walt Lee; 16" x 12" Scenic picture with iridescent blue-green background; 14" x 20" watercolor "Farmhouse Scene" signed W.B. Macy; 14" x 20" watercolor "River & Trees" signed C.H. Comptall; 14" x 20" watercolor "Country Scene" signed E.R. Sizmun; 24" x 36" oil on canvas "Field of Blue Bonnets" signed Markwell; 22" x 16" watercolors "Sailboats in Harbor" and "Sailboats Coming Home" signed Jean Ramaud; 26" x 18" handcolored lithograph "Beneath the Snowclad Peaks"; 30" x 20" oil on canvas "Forest & Lake Scene"; two Scenic watercolors, 22" x

Nine Indian blankets, ranging in size from 18" x 18" up to 80" x 37" - all in very good to excellent condition; 56" x 46" Persian rug; Iranian Oriental area rug, 87" x 47".

12" mirror plateaus; wood cased disc music box; 10-pc. celluloid dresser set in original box; foot warmer; iron door stops; miscellaneous glass bottles and decanters; box of antique glass marbles; antique brass figural lamp w/Dragon globe; table lamp w/Champleve base; onyx & brass table lamp; black amethyst base table lamp; brass base 22" table lamp; bronze & leaded glass table lamps.

Pair of Capo-di-Monte plaques; eight pieces Flow Blue; Prussia 12" charger; 14" Delft charger; Noritake spoon holders; assorted porcelain items; 18" dessert set; 9" Majolica Fish vase; Nippon hair receiver; English ironstone pitcher w/Oriental decor; and many other items.

Franklin Mint "Guardians of Ming Dynasty" set w/display case. Thirteen commemorative Franklin Mint plates.

Furniture: French curio cabinet w/mirrored back; Chinese Oriental carved sandalwood table; European 40" wood pedestal heavily carved with Grapes & Leaves; Victorian marble-top fern stand; oak violin-shape table w/barley twist legs and spindles; oak corner cabinet w/curved glass sides; small oak slant-front secretary w/mirror; handpainted leather on wood fireplace screen; Victorian mahogany display cabinets with mirrors; oval marble-top mahogany Victorian parlor table; pair mahogany Victorian arm chairs w/green velvet; pair Victorian lady's chairs w/rose velvet; pair Victorian marble-top tripod fern stands; Victorian marble-top table; brass & marble Victorian fern stand; tilt-top game table with Oriental painting; highly carved mahogany library table w/carving of Fruit & Flowers; pine spindle-back chair w/rush seat; pine and oak trestle-style library table; child's wicker rocker; child's mahogany drop-leaf table; oak swivel bookcase w/hinged shelf; 6-sided oak library table; needlepoint footstool; set of four painted black wicker chairs; oak stand; oak framed bevelled mirror; very highly carved Oriental rosewood air chair; etc.



FIRST CLASS



**SEE INSIDE
FOR MORE
INFORMATION.**



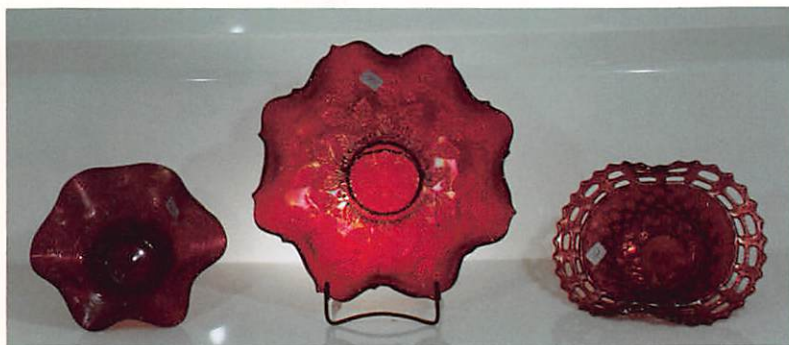
16".



DOODY
ERSON
6/039 (316) 746-2694

R
REALTOR





ANTIQU

AUC

Fri., November Sat., November

Harley Hotel — I-70 a
(West of St. Louis)
ST. LOUIS

ESTATE OF PHY



Over 200 Pieces of Carnival Glass:

(SELLING FRIDAY EVENING)

Rare and hard to find items: excellent red Holly 5½" bowl; red open-edge Blackberry bowl; red Dragon & Lotus bowl; choice 8" red Holly bowl; amber NuArt Homestead plate; amber Heavy Grape chop plate; Peacock on Fence plate - ice green; white Beaded Cable rosebowl; Fern Brand chocolates, two sides up; pair marigold Inverted Strawberry candlesticks; smokey blue Carnival frog; Northwood bushel basket, 8-sided - ice blue; purple Sunflower pin tray; and more.

Bowls: aqua opalescent Poppy Show bowl - absolutely gorgeous!!; ice green Pony Head bowl; Hearts & Flowers bowl - ice green; Peacock on Fence bowl - aqua opal; Inverted Strawberry 6" bowl - gn; N Grape Leaves - p; aqua opal Leaf & Beads; white Peacock & Urn; smokey Hattie; peach opalescent bowls - Roundup, Cherry, Raindrop; blue Cherry Circles; amber Open Rose; blue Orange Tree; Wishbone; purple Three Fruits; Stag & Holly - m; Strawberry - p; Fruits & Flowers - p; Ribbon Tie - p; Cobblestone - p; Dragon & Lotus; Fishscales; Panther sauce - m; 11" Grape & Cable - blue; and more.

Also Selling: NuArt shades; assorted tumblers - Singing Bird, Peacock at Fountain, Oriental Poppy, Grape Arbor; Swan - ice blue; aqua opal Drapery vase; aqua opal Leaf & Beads rosebowl; Inverted Feather cracker jar; Nautilus - p; purple Dandelion mug; marigold Fisherman mug; butterscotch opalescent Drapery rosebowl; Imperial Grape wine set - gn; ftd. Orange Tree water set - blue; purple Memphis punch bowl and 12 cups; purple Acorn Burrs - 14-pc. punch set, berry set, butter, creamer and sugar; vases; blue Beaded Cable rosebowl; purple Grape & Cable - humidior, sweetmeat, hatpin holder; Also selling other rosebowls, compotes, nappies, bon-bons, and more. Just a portion of the Carnival Glass was unpacked. The inventory list was very vague. For instance, the aqua opalescent Poppy Show bowl was described as "blue 9" opalescent Carnival Glass bowl" - the Hearts & Flowers as "green Carnival Glass 8" fluted bowl", and so forth. All the Carnival we unpacked had very good color and was in good condition. Who knows what might turn up!!

Art Glass & Other Glassware:

Outstanding Steuben gold Aurene pedestal punch bowl with footed cups and ladle w/Aurene handle; 10" Tiffany Favre bowl etched with Ivy; signed Tiffany 5" pastel blue compote; signed Tiffany 8" pastel green compote; Baccarat bowl; Satin Glass; Cranberry pickle castor in silver frame; Lutz-type vases; Floret apricot Satin cracker jar; green glass wine set; Cranberry bowls and vases; clear Mary Gregory; pair Mercury glass vases; blue 10" signed Steuben Aurene candlestick; signed Aurene 12" vase - red w/gold Leaf & Flower design; 10" blue Durand vase w/white Heart & Vine; signed 12" blue Swirl Steuben Aurene vase; American Brilliant Cut Glass - bowls, Libbey 10" candlestick, 7" covered box, set of knife rests, 12" vase on silver base, flask, tumblers, celery, perfumes, sugars and creamers, pitchers, carafe, vases, etc.; 6" signed Tiffany vase; 10" Kew Blas gold trumpet vase; Northwood Royal Ivy frosted Rubina pitcher; Northwood Royal Ivy cased Spatter creamer and sugar; Northwood Royal Ivy Rubina fairy lamp; Royal Ivy miniature lamp; Satin Glass rosebowls; 5" signed gold Steuben Aurene footed nappy; four Quezal shades; Steuben lamp shade; signed Tiffany Favre 8½" pastel yellow bowl etched w/Butterfly; Daum Nancy French Cameo 4¾" vase; Galle Cameo 5" vase; Amberina vase; Burmese fairy lamp; Tiffany gold Favre lamp shade; 6" Quezal vase; 6" Calcite vase w/gold Heart & Vine decor, gold interior; Steuben Ivrene Jack in Pulpit vase; pair Steuben Verre de Soie covered compotes; red Loetz Swirl Drape 6½" vase; large Steuben Verre de Soie pedestal bowl; decorated Satin Glass vases; green glass wine decanter, wines and tray; Flint Glass; assorted Pressed Glass; pair 13" Bristol Portrait vases; pair 10" Bristol vases; Vasa Murrhina sugar shaker; blue opaque glassware; assorted Milk Glass; blue glass compote, underplate and ladle w/silver deposit; Cranberry Coinspot pitcher; decorated Cranberry tankards; Cranberry decanter; green Victorian Glass tankard; Phoenix Glass; barber bottles; blue opalescent Swirl pitcher; castor set.

Blue Chrysanthemum Sprig Custard Glass: 8-pc. water set; 4-pc. table set (sugar chipped); cruet w/clear stopper; shaker.

ALL VLSA

AMODILNV

ANTIQUE ESTATE

AUCTION



Friday, November 17, 1989

7:00 p.m.

Saturday, November 18, 1989

9:30 a.m.

Harley Hotel — I-70 at Earth City Exit #231
(West of St. Louis near St. Charles)

ST. LOUIS, MISSOURI

ESTATE OF PHYLLIS WHITWORTH

Selling a large antique estate consisting of approximately 1,000 items, many of which are very choice. Phyllis Whitworth collected for many years prior to her death and always looked for the best. The estate had been appraised and put in storage before Woody Auction Company was contacted. The appraisal was not detailed but, due to the circumstances, it was impossible to unpack and re-list everything. Consequently, not all of the fine items are listed in this brochure. We do hope that this gives you an idea of the quality of the items to be sold.

ORDER OF SALE: The Carnival Glass will be sold Friday evening beginning at 7:00. The Art Glass and other antiques will sell beginning Saturday morning. The furniture and paintings will be sold starting at noon on Saturday.

PREVIEW: Friday, beginning at 4:00 p.m.

TERMS: Cash. Checks accepted if previously approved.

MOTEL RESERVATIONS: Call the Harley Hotel directly at 314-291-6800. The toll-free number is 1-800-321-2323. Mention the Woody Auction for special room rates.

WRITE-IN BID POLICY: Bids are accepted with a written statement of the maximum amount of the bid. **Please note** - there is a 5% handling charge which will be added to the selling price of all write-in bids. This is in addition to the cost of postage and insurance. Your write-in bid will be handled just as if you are present and bidding. It is possible that you might purchase an item for less than your bid. If your bid is not successful, you will receive a statement of the selling price of the item.



Douglass, Ks. 67039 (316) 746-2694

