



**AUCTION SERVICE**

## **Carnival Glass Auction**

**Saturday, August 26, 1989, 10:30 a.m.**

**(preview 6 -10 pm Friday evening,**

**8 - 10:30 am Saturday morning)**

**at the**

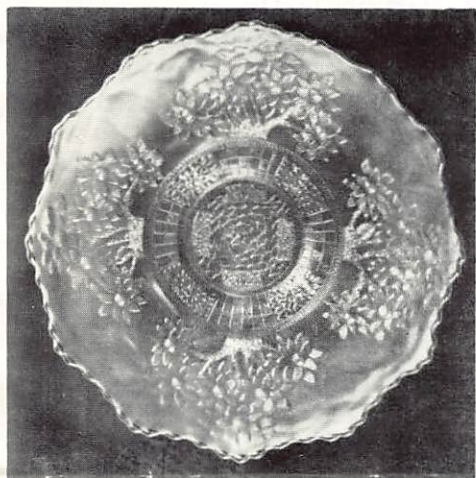
**Ramada Inn South**

**4514 S. Emerson Ave.**

**Indianapolis, Ind. 46203**

**(southside of town, just off I-465)**

**(317)787-3344**

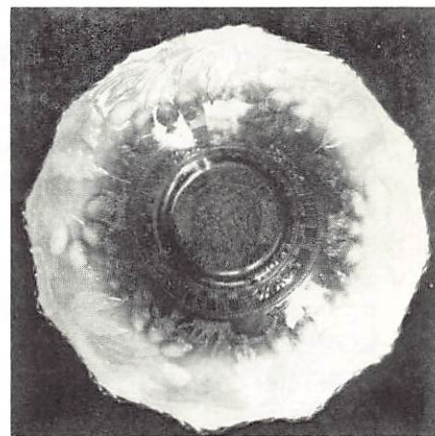


**LOT #5**

We are pleased to present, at auction, the collection of Helen Ouellete from Oceanside, Ca. In her years of collecting she decided to go with only the best and as a result acquired her share of super items. We now have the opportunity to present this collection at auction to the highest bidder, without reserve. The glass keeps getting better and the rarities more difficult to find - there's no better time than *now*! Hope to see you there!

The Ramada Inn South will host the event - you may call the motel direct for reservations at (317) 787-3344 and mention the Burns Auction Service.

Mail and Phone bids accepted through Friday, August 25th - no later please! Have a good day!



**EXTERIOR OF LOT #5**

### **Burns Auction Service**

**Bill Richards**  
44 Water Street  
Poland, Ohio 44514  
(216) 757-2001

**Tom Burns**  
109 East Steuben Street  
Bath, New York 14810  
(607) 776-7942

**Indiana License No. AU08800478**

Mail Bids honored under the following conditions:

1. No deposit required. Bidders will take full responsibility to honor any and all bids we execute for them. Payment in full plus postage and handling required after notification and before we ship any item to them.
2. Items are bid on in perfect condition with average or above average iridescence OR as listed in the brochures. Bids will not be carried out when damage on an item has been found during the auction.
3. Successful bidders will be notified by collect call from the auctioneer (so be sure to include phone number).
4. Phone inquiries about the glass or any other questions are welcome.
5. All non-successful bids will receive a result summary in the mail. Results of all bids will be provided.
6. If you have some other person at the auction bidding for you, they must pay for the item before taking it.
7. Mail bids due by Friday, August 25, 1989. **NO LATER, PLEASE!**

- |  |   |
|--|---|
| <u>32 1/2</u> 1. Top O' The Walk Hatpin - Pur.   | <u>175</u> 22. N Poppy Relish Tray - Elec. Blue (super color and irid.)   |
| <u>22 1/2</u> 2. Geometric Hatpin - Pur.   | <u>130</u> 23. N Poppy Relish Tray - Dk. Mari. (good color)   |
| <u>45</u> 3. Presnick G & C Covered Tobacco Jar - Dark (new)   | <u>90</u> 24. N Wild Rose ftd. Open Edge Bowl - Pur.  |
| <u>25</u> 4. Pastel Swan - Ice Green   | <u>1250</u> 25. <b>N ROUND BUSHEL BASKET - AQUA / SAPPHIRE BLUE (SUPER FANTASTIC COLOR AND QUALITY; AN ODD AQUA / BLUE TINT VERY SELDOM SEEN)</b> |
| <u>10,000</u> 5. <b>9" FENTON ORANGE TREE PLATE - AQUA OPAL. (ABSOLUTELY SUPER, SUPER ITEM; IS REALLY MORE BLUE OPAL. THAN AQUA; THE BEST ONE OF TWO KNOWN)</b>              | <u>300</u> 26. <b>N ROUND BUSHEL BASKET - AQUA OPAL. (SUPER COLOR AND QUALITY; RARE)</b>  |
| <u>300</u> 6. 9" Fenton Orange Tree Plate - Blue (silver)  | <u>250</u> 27. <b>N ROUND BUSHEL BASKET - ICE GREEN (VERY SCARCE AND NICE)</b>  |
| <u>85</u> 7. <b>8 1/2 - 9" FENTON ORANGE TREE RUFFLED BOWL - AMBER (VERY RARE COLOR FOR THIS ITEM; NICE)</b>   | <u>150</u> 28. N Drapery Tri Cornered Candy Dish - Ice Blue (scarce)  |
| <u>175</u> 8. Fenton Orange Tree Ruffled ftd. Fruit Bowl - Blue (super color and irid.)  | <u>50</u> 29. <b>N DRAPERY SWUNG VASE - ICE BLUE (SCARCE; GOOD COLOR)*</b>  |
| <u>400</u> 9. Fenton Orange Tree Shaving Mug - Red (good color, rare; has small flake on base)   | <u>450</u> 30. <b>N DANDELION MUG - AQUA OPAL. (VERY NICE AND HAS GOOD OPAL.)</b>   |
| <u>500</u> 10. <b>8 1/2 - 9" FENTON CHERRY CIRCLES ROUND FLARED HANDLED BON BON - RED (SUPER, SUPER RARE AND NICE; ONLY ONE OF THIS SHAPE KNOWN; HAS FLAKE ON ONE POINT)</b> | <u>175</u> 31. <b>N LEAF AND BEADS FTD. ROSE BOWL - AQUA OPAL. (VERY SCARCE WITH GOOD COLOR) *</b>  |
| <u>3000</u> 11. <b>9 1/2" FENTON LITTLE FLOWERS ICE CREAM SHAPED BOWL - RED (SUPER RARE AND NICE; GOOD COLOR AND SHAPE)</b>  | <u>130</u> 32. N Leaf and Beads ftd. Rose Bowl - Aqua Opal. (nice but has check in one foot)  |
| <u>1800</u> 12. <b>8 1/2" FENTON TWO FLOWERS SPATULA FTD. RUFFLED BOWL - RED (SUPER COLOR AND VERY RARE; NICE) *</b>   | <u>95</u> 33. N Three Fruits ftd. Ruffled Bowl - Amy. (super color)   |
| <u>185</u> 13. <b>FENTON TWO ROW OPEN EDGE HAT W/ TWO SIDES UP - RED (GOOD COLOR; NICE)</b>  | <u>625</u> 34. <b>N THREE FRUITS FTD. RUFFLED BOWL - AQUA OPAL. (RARE WITH GOOD COLOR)</b>  |
| <u>17 1/2</u> 14. Fenton Two Row Open Edge Hat w/ Two Sides Up - Mari.   | <u>650</u> 35. <b>N THREE FRUITS FTD. RUFFLED BOWL - AQUA OPAL. (RARE WITH GOOD COLOR)</b>  |
| <u>310</u> 15. <b>FENTON ORANGE TREE HANDLED LOVING CUP - BLUE (VERY SCARCE)</b>   | <u>300</u> 36. <b>N WISHBONE FTD. PLATE - PUR. (VERY SCARCE WITH GOOD COLOR)</b>  |
| <u>250</u> 16. <b>FENTON ORANGE TREE HANDLED LOVING CUP - MARI. (GOOD COLOR; SCARCE)</b>   | <u>70</u> 37. N Wishbone ftd. Ruffled Bowl - Pur.   |
| <u>155</u> 17. Fenton Orange Tree Handled Loving Cup - Green (rare color; has check at handle)   | <u>120</u> 38. N Wishbone ftd. Ruffled Bowl - Green   |
| <u>35</u> 18. Fenton Orange Tree Shaving Mug - Blue  | <u>180</u> 39. <b>N EMBROIDERED MUMS RUFFLED BOWL - ELEC. BLUE - VERY NICE IRID.; HAS MANUF. PULLED POINT)</b>                                    |
| <u>225</u> 19. N Daisy and Drape ftd. Vase - White (good color)  | <u>2000</u> 40. <b>N HEART AND FLOWERS PLATE - GREEN (SUPER RARE AND DESIRABLE; VERY NICE)</b>  |
| <u>1100</u> 20. <b>N POPPY RELISH TRAY - AQUA OPAL. (SUPER PASTEL COLOR; RARE)</b>   | <u>175</u> 41. <b>N HEART AND FLOWERS PLATE - MARI. (VERY DESIRABLE BUT HAS OPEN BUBBLE ON BASE)</b>  |
| <u>375</u> 21. <b>N POPPY RELISH TRAY - GREEN (RARE COLOR; SUPER)</b>  | <u>875</u> 42. <b>N HEART AND FLOWERS RUFFLED BOWL WITH RIBBED EXTERIOR - ICE GREEN (VERY RARE AND NICE)</b>                                      |
| <u>189 37 50</u>   | <u>375</u> 43. <b>N HEART AND FLOWERS RUFFLED BOWL WITH RIBBED EXTERIOR - ICE BLUE (VERY SCARCE AND NICE)</b>                                     |

- 34 4  
8 425
95. 9" FENTON THISTLE RUFFLED BOWL - AQUA (RARE COLOR FOR THIS ITEM; SUPER EXAMPLE) 10 7 25 1625
- 75 96. 7" Fenton Acorn Ice Cream Shaped Bowl - Aqua (scarce; good color) 44 25 100
- 135 97. 7" Fenton G & C Ruffled Bowl - Aqua (scarce) 1100
- 25 98. Fenton Holly Stemmed Compote - Mari. 19 1100
- 210 99. Fenton Mikado Large Ice Cream Shaped Compote - Dk. Mari. (good color; nice) 66 110
- 1875 100. DUGAN BUTTERFLY AND TULIP LARGE SQUARE FTD. BOWL - PUR. (VERY RARE AND SUPER COLOR; NICE - ONE OF THE FINEST EXAMPLES AVAILABLE) 66 350 1350
- 200 101. Dugan Nautilus Creamer - Pur. (very scarce; not signed)
- 55 102. Dugan Fishermans Mug - Amy.\* 350
- 42- 190 103. Dugan Stippled Petals Domed 2 sided Bowl - Pur. (good color; some minor roughness on base) \* 185 200
- 42- 60 104. Dugan Flowers and Frames Domed ftd. Bowl - Pur. (very nice color) 225
- 600 105. DUGAN PERSIAN GARDEN LARGE ICE CREAM SHAPED BOWL - P. OPAL (SUPER, SUPER SCARCE AND VERY DESIRABLE) 110 19 475
- 250 106. DUGAN HONEYCOMB ROSE BOWL - P. OPAL. (SUPER COLOR; SCARCE) 145
- 175 107. 6" Dugan Four Flower Plate with Basketweave Exterior - P. Opal. (scarce; good opal.) 125
- 19 325 108. 9 1/2" DUGAN GARDEN PATH VARIANT ICE CREAM SHAPED BOWL - P. OPAL (VERY SCARCE ITEM; GOOD COLOR) 25
- 300 109. 9" Dugan Round Up Ruffled Bowl or Plate - Pur. (good color) 100
- 250 110. 9" Dugan Round Up Ruffled Bowl or Plate - White (good color) 95
- 130 111. Dugan Constellation Compote - White (scarce) 44 75
- 20 112. 8 1/2" Fenton Peacock Tail Ice Cream Shaped Bowl - Mari. 225
- 175 113. 10" Fenton Two Flowers Ice Cream Shaped ftd. Bowl - Blue 55
- 150 114. 9 1/2" FENTON TWO FLOWERS RUFFLED FTD. BOWL - MARI./VAS. (VERY SCARCE COLOR FOR THIS ITEM; NICE) 525
- 34 1500 115. 8 1/2 - 9" FENTON PEACOCK AND GRAPE ICE CREAM SHAPED BOWL - RED (VERY RARE AND GOOD COLOR; NICE) 320 325 105
- 1000 116. 8 1/2" FENTON PEACOCK AND GRAPE FTD. RUFFLED BOWL - RED (SCARCE AND UNDER RATED; GOOD COLOR) 200 60 325
- 300 117. FENTON PERSIAN MEDALLION HANDLED BON BON - RED (RARE AND HAS GOOD COLOR) \* 110 300
- 8 425
118. 10" FENTON PERSIAN MEDALLION CHOP PLATE - BLUE (GOOD COLOR; SCARCE)
119. 6" Fenton Persian Medallion Plate - Blue \*
120. 9" FENTON HOLLY RUFFLED BOWL - RED (SUPER EXAMPLE AND VERY RARE)
121. 9" FENTON HOLLY RUFFLED BOWL - RED (RARE AND A NICE EXAMPLE)
122. 9" Fenton Holly Ruffled Bowl - White
123. 9" Fenton Holly Bowl with 3 in 1 Edge - Blue
124. 9" Fenton Captive Rose Plate - Blue
125. 8 1/2 - 9" FENTON PETER RABBIT ICE CREAM SHAPED BOWL - BLUE (SUPER RARE AND HAS NICE COLOR)
126. Fenton Panther ftd. Master Berry Bowl - Blue (super color; scarce)
127. 6" FENTON LIONS RUFFLED BOWL - BLUE (VERY SCARCE) \*
128. 7" Fenton Horsehead Medallion Plate - Mari. (scarce)
129. 7" Fenton Horsehead Medallion Plate - Mari. (scarce) \*
130. 9" FENTON PEACOCK AT THE URN PLATE - BLUE (GOOD COLOR AND VERY SCARCE)
131. 9" Fenton Peacock at the Urn Plate - White (scarce; has check near edge)
132. Fenton Peacock at the Urn Stemmed Compote - Mari./Vas. (scarce; good color)
133. Fenton Peacock at the Urn Stemmed Compote - Mari.
134. Fenton Peacock at the Urn Ruffled Bowl - Blue
135. Fenton Little Fishes Lg. Ice Cream Shaped ftd. Bowl - Mari. (good color)
136. 6" Fenton Little Fishes ftd. Ruffled Bowl - Blue (scarce)
137. DUGAN PONY 10 RUFFLED BOWL - MARI./LT. VAS. (UNUSUAL COLOR AND SCARCE)
138. 7" Fenton Pine Cone Plate - Blue
139. 6 1/2" Fenton Pine Cone Plate - Mari.
140. FENTON STRAWBERRY HANDLED BON BON - AMBERINA (VERY SCARCE AND DESIRABLE)
141. IMPERIAL FASHION PUNCH CUP - RED (RARE BUT HAS FAIR IRID.)
142. Fenton Birds and Cherries Square Bon Bon - Green \*
143. 7" Fenton Vintage Grape Plate - Blue
144. Imperial Twins 2 pc. Fruit Bowl - Mari.
145. IMPERIAL CORN BOTTLE - GREEN (VERY SCARCE AND DESIRABLE)
146. Imperial Windmill Tumbler - Mari.
147. N GRAPE AND GOTHIC ARCH TUMBLER - PEARLIZED CUSTARD (RARE AND UNUSUAL; DESIRABLE)
- 8 807.50

- 34 350 44. N HEART AND FLOWERS RUFFLED BOWL WITH PLAIN EXTERIOR - ICE BLUE (SCARCE WITH GOOD COLOR)
- 34 500 45. N HEART AND FLOWERS STEMMED COMPOTE - AQUA OPAL. (RARE WITH GOOD BUTTERSCOTCH OVERLAY)
- 34 700 46. N ROSE SHOW PLATE - ELEC. BLUE (SUPER RARE, SUPER COLOR AND PERFECT) \*
- NS 47. N ROSE SHOW RUFFLED BOWL - WHITE (GOOD IRID. AND VERY NICE)
- 750 48. N POPPY SHOW RUFFLED BOWL - BLUE (VERY SCARCE AND DESIRABLE)
- 325 49. N POPPY SHOW RUFFLED BOWL - WHITE (SCARCE WITH GOOD COLOR)
- 19 2400 50. N PEACOCKS BOWL WITH PIE CRUST EDGE AND RIBBED EXT. - ICE GREEN (SUPER DESIRABLE AND VERY NICE)
- 400 51. N PEACOCKS PLATE WITH RIBBED EXTERIOR - ICE GREEN (SCARCE WITH GOOD COLOR)
- 350 52. N PEACOCKS STIPPLED PLATE WITH RIBBED EXTERIOR - BLUE (AVERAGE COLOR; SCARCE)
- 900 53. N PEACOCKS BOWL WITH PIE CRUST EDGE - ELEC. BLUE (SUPER COLOR AND VERY DESIRABLE)
- 200 54. N Peacocks Bowl with Pie Crust Edge - Mari. (good color; scarce)
- 150 55. N Peacocks Ruffled Bowl with Basketweave Exterior - Mari. (scarce item) \*
- 550 56. N PEACOCK AT THE URN LARGE ICE CREAM BOWL - ODD MARI. (RARE AND UNUSUAL; BASE GLASS HAS SLIGHT SMOKEY TINT)
- 300 57. 5" N PEACOCK AT THE URN IND. ICE CREAM BOWL - ICE BLUE (SUPER COLOR AND SUPER IRID.)
- 69 55 58. 5" N Peacock at the Urn ind. Ice Cream Bowl - Elec. Blue (super irid.; a bit crooked) \*
- 65 59. 5" N Peacock at the Urn ind. Ice Cream Bowl - Mari. (super irid. and color)
- 325 60. N GOOD LUCK PLATE WITH BASKETWEAVE EXTERIOR - AMY. (VERY SCARCE AND DESIRABLE)
- 350 61. N GOOD LUCK BOWL WITH PIE CRUST EDGE AND BASKETWEAVE EXTERIOR - GREEN (VERY SCARCE ITEM)
- 375 62. N STIPPLED GOOD LUCK BOWL WITH PIE CRUST EDGE - BLUE (GOOD COLOR; SCARCE)
- 150 63. N Good Luck Bowl with Pie Crust Edge - Mari. (very good color)
- 34 275 64. N GOOD LUCK RUFFLED BOWL - ELEC. BLUE (SUPER COLOR)
- 13 200 65. N Good Luck Ruffled Bowl - Amy. (scarce and nice)
- 9670

- 100 440 66. N FERN BRAND 2 SIDED PLATE - AMY. (SCARCE ITEM; HAS BRONZE IRID.)
- 45 67. N G & C Hatpin Holder - Mari. (scarce)
- 125 68. N G & C Covered Powder Jar - Amy.
- 75 69. 9" N G & C Variant Ruffled Bowl with Basketweave Exterior - Green (scarce)
- 75 70. 9" N G & C Stippled Ruffled Bowl - Amy. (scarce; nice)
- 165 71. 9" N G & C Plate - Green (good color)
- 44 210 72. N G & C Covered Sweetmeat Compote - Pur.
- 60 73. N G & C Tumbler - Green (scarce)
- 55 74. N Fine Cut and Roses ftd. Rose Bowl - Amy.
- 500 75. N ACORN BURR WATER PITCHER - PUR. (VERY SCARCE AND DESIRABLE)
- 50 76. N Acorn Burr Tumbler - Pur.
- 200 77. N ACORN BURR COVERED BUTTER DISH - AMY. (SCARCE ITEM)
- 250 78. N Acorn Burr Covered Sugar Dish - Amy. (good color)
- 75 79. N Acorn Burr Spooner - Amy. (scarce)
- 95 80. N Acorn Burr Creamer - Amy. (scarce)
- 45 81. N Acorn Burr Punch Cup - Green
- 15x2 82. (2) N Acorn Burr Punch Cups - Pur.
- 130 83. N Strawberry Bowl with Pie Crust Edge - Green (nice)
- 200 84. 8" Fenton Stag and Holly Ice Cream Shaped ftd. Bowl - Green
- 69 1600 85. 9" FENTON DRAGON AND LOTUS LOW RUFFLED BOWL - RED (ABSOLUTELY SUPER COLOR AND QUALITY)
- 69 475 86. 9" FENTON DRAGON AND LOTUS ICE CREAM SHAPE BOWL - REV. AMBERINA (VERY SCARCE AND A NICE ITEM)
- 160 87. 9" Fenton Dragon and Lotus Ruffled Bowl - Green (scarce)
- 125 88. 9" Fenton Dragon and Lotus Ruffled Bowl - Blue
- 19 225 89. 9" Fenton Leaf Chain Plate - White (good color)
- 1350 90. 6 - 7" FENTON LEAF CHAIN RUFFLED BOWL - RED (SUPER COLOR; BEST EXAMPLE I'VE SEEN)
- 95 91. 7" Fenton Leaf Chain Ruffled Bowl - Mari. / Vas. (scarce color)
- 350 92. FENTON KITTENS CUP AND SAUCER - MARI. (VERY SCARCE AND DESIRABLE)
- 110 93. Fenton Kittens 4 Sided Bowl - Mari. (scarce)
- 40 94. Fenton Kittens 2 Sided Banana Dish - Mari. (damaged on base)
- 7457

- 14
- 40 148. N Dandelion Tumbler - Pur.
- 20 149. 7" N Fruit and Flowers Ruffled Bowl - Mari.
- 85 150. N Round Bushel Basket - Pur. (scarce)
- 45 151. N Panelled Holly Handled Candy Dish - Green
- 150 152. 9" Fenton Three Fruits Plate - Green (scarce)
- 45 153. 8 1/2 - 9" Fenton Orange Tree Ruffled Bowl - Blue
- 45 154. 8 1/2 - 9" Fenton Holly Ruffled Bowl - Blue
- 200 155. **FENTON HOLLY GOBLET SHAPE COMPOTE - MARI./AQUA BLUE (VERY SCARCE COLOR; NICE)**
- NS 156. Fenton Orange Tree Breakfast Creamer - White \*
- 25 157. 9 1/2" Fenton Two Flowers Ball Footed Bowl - Mari.
- 80 75 158. Fenton G & C ftd. Fruit Bowl with Persian Medallion Interior - Mari.
- 55 159. Fenton Wreath of Roses Handled Bon Bon - Green
- 85 160. Fenton Scale Band 5 pc. Water Set - Mari.
- 65 161. Fenton Vintage Grape ftd. Fernery - Amy.
- 20 162. 8 - 9" Fenton Stippled Rays 4 sided Bowl - Green
- 44 65 163. 10" Dugan Ski Star Ruffled Bowl - P. Opal.
- 45 164. 8 1/2" Dugan Pony Ruffled Bowl - Mari.
- 160 165. M'burg Boutonniere Compote - Green (Radium finish)
- 5 166. 6" M'burg Cosmos Ruffled Bowl - Green \*
- 27 1/2 167. 6" Imperial Grape Plate - Mari.
- 20 168. Imperial Colonial Mug or Parfait - Mari.
- 32 1/2 169. 8 1/2" Imperial Embossed Scroll Bowl with File Exterior - Pur. (super color)
- 65 170. Imperial Grape Wine Decanter with Stopper - Mari.
- 140 171. (7) Imperial Grape Wine Glasses - Mari. (sold per each)
- 44 65 172. Imperial Octagon Wine Decanter and Stopper - Mari.
- 47 105 173. (6) Imperial Octagon Wine Glasses - Mari. (sold per each)
- 110 174. Imperial Tiger Lily Water Pitcher - Green
- 75 175. **IMPERIAL TIGER LILY TUMBLER - AQUA/GREEN (ODD COLOR; SCARCE)**
- 150 176. Imperial Floral Optic ftd. Cake Plate - Aqua/Teal (rare color)
- 45 55 177. European Hen on the Nest Covered Butter Dish - Mari. \*
- 50 40 178. (3) Fenton Fentonia Tumblers - Blue (sold separately; choice)
- 130 179. **6 1/2" FENTON SAILBOATS RUFFLED BOWL - GREEN (VERY SCARCE COLOR)**
- 23 30
- 85
- 11 3
- 575 180. **8 1/2 - 9" M'BURG TROUT AND FLY 6 RUFFLED BOWL - AMY (VERY NICE AND VERY DESIRABLE)**
- 925 181. **M'BURG OHIO STAR VASE - GREEN (SUPER PIECE; SUPER COLOR; HAS TINY BRUISE ON INSIDE)**
- 125 182. 7" M'burg Little Stars Ruffled Bowl - Amy. (scarce)
- 65 183. 8" M'burg Mayan Ice Cream Shaped Bowl - Green (small flake on base)
- 85 184. 7" M'burg Hanging Cherries Ice Cream Shaped Bowl - Green
- 850 185. **5 - 6" M'BURG HANGING CHERRIES RUFFLED SAUCE - BLUE (SUPER COLOR AND SUPER RARE)**
- 375 186. **M'BURG PEACOCK AT THE URN LG. ICE CREAM BOWL - AMY. (VERY SCARCE; NO BEE)**
- 85 187. 6" M'burg Peacock at the Urn Ind. Sauce - Amy. (satiny and scarce)
- 135 188. M'burg Peacock at the Urn <sup>flat</sup> Ruffled Bowl - Amy. (very scarce)
- 350 189. **M'BURG PEACOCK AT THE URN LG. RUFFLED BOWL - AMY. (VERY NICE RADIUM FINISH; NO BEADS, NO BEE)**
- 60 190. 9" M'burg Blackberry Wreath Bowl with 3 in 1 Edge - Amy.
- 190 191. M'burg Peacock Tail Variant Compote - Amy.
- 100 192. 10" Cosmos and Cane Ruffled Bowl - White (scarce)
- 350 193. **N RASPBERRY 7 PC. WATER SET - GREEN (VERY SCARCE AND NICE)**
- 12 1/2 194. Fenton Blackberry Spray Ruffled Hat - Mari.
- 395 195. **FENTON BLACKBERRY SPRAY RUFFLED HAT - RED (VERY GOOD COLOR AND DESIRABLE)**
- 30 196. Fenton Flowers ftd. Rose Bowl - Mari.
- 10 197. 7" Fenton Vintage Grape Bowl - Green
- 60 198. Fenton Iris Buttermilk Goblet - Green
- 15 199. Fenton Holly Hat - Blue
- 300 200. **13 1/4" IMPERIAL STRETCH BOWL - RED (SUPER ITEM WITH SUPER COLOR; BILL CROWL - YA GOTTA STAY FER THIS ONE!)**
- 80 201. (2) N Pillar Shades on Brass Lamp Base - P. Opal (nice item) \*
- 15 202. Fenton Diamond Rib Swung Vase - Green
- 37 1/2 203. Imperial Ribbed (Morning Glory) Small Swung Vase - Helios Green
- 10 204. (2) Imperial Fashion Punch Cups - Mari.
- 5 205. Imperial Pansy Handled Nappy - Mari.
- 25 206. Butterfly & Plum - amy
- 25 207. Bullseye - m
- 5 208. colonial goblet m & white orange Ice Creamer \*
- 529 5



LOT #20



LOT #21



LOT #48



LOT #125



LOT #120

LOT #11

**BURNS**

109 East Steuben Street  
Bath, New York 14810

4331  
 7515  
 5295  
 2330  
 18937.50  
 7457  
 9670  
 8425  
 8807.50  


---

 68437.00

First Class  
 U.S. Postage  
**PAID**  
 Permit #7  
 Hammondsport, NY

