

QUALITY "CARNIVAL GLASS AUCTION"

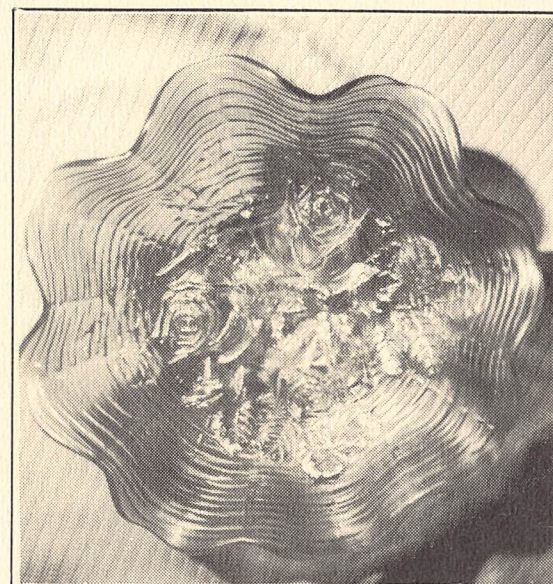
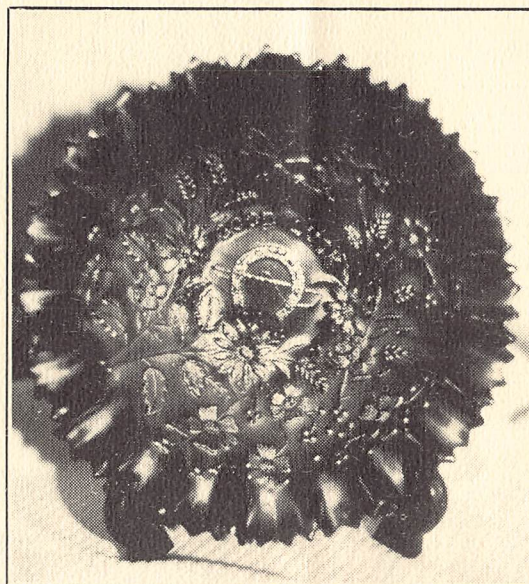
Saturday, May 13th — 10:30 A.M. (PREVIEW 8:30 - 10:30 A.M.)

★ NOTE: My Auctions are Set-up so You are able to Comfortably Preview throughout the Auction ★

'HOLIDAY INN EAST'
Saginaw, Michigan

DIRECTIONS: Take I-75 (EXIT -149B - "HOLLAND AVENUE / SAGINAW - M-46 WEST"). Go WEST One Block to First Stop Light (OUTER DRIVE) - Turn LEFT to "HOLIDAY INN EAST" Entrance (1408 S. OUTER DRIVE). FOLLOW SIGNS!!!

"COOPER'S AUCTION SERVICE" has been Commissioned to Sell at Public Auction Approximately 375 Catalogued Lots of CARNIVAL GLASS. This is a ONE PERSON COLLECTION which offers a Diversified Selection for every type of Collector. If you like Carnival Glass — You won't want to miss this Auction which will Offer Many CHOICE PIECES in All the Colors of the Rainbow to Include: PASTELS - OPALESCENT COLORS - RED - VASELINE - ELECTRIC BLUE and MANY STANDARD COLORS!!!



PLEASE PLAN TO JOIN US -- AS ALWAYS WE APPRECIATE YOUR SUPPORT

Motel Reservations:

The "HOLIDAY INN EAST" will offer a Special Rate if you mention you are attending this Auction (\$29.00/1 Bed - \$39.00/2 Beds - \$49.00/Overlooking Pool and \$60.00/Pool-side with windows for those that would like to sell glass from their room). **For Reservations Call:** (517) 755-0461. There are also other motels across the street: "Comfort Inn" (517) 753-2461 however, I doubt that you will find a better rate than the Holiday Inn is offering.

— MAKE YOUR RESERVATIONS RIGHT AWAY —

Terms:

Payment for all purchases must be made IN FULL on day of sale by: CASH or CHECK w/proper I.D.'s. OUT-OF-STATE CHECKS must be approved in Advance unless known by Auctioneer or Buck Walraven, Sales Manager (517) 791-3190. **Michigan State Sales Tax:** 4% Sales Tax will be charged on ALL PURCHASES — **UNLESS** you have your Sales Tax Number with You.

Absentee or Write-In Bids:

A 25% Deposit is Required on ALL Pieces Bid On. Items are in Perfect Conditions w/Average or Above Iridescence or So Listed in Catalogue. Bids **Will Not** be Carried Out When Damage Has Been Found During the Auction. Deposit Checks will be sent out within 5 Working Days After the Auction on Bids That Are Not Successful. *Successful Bidders Will Be Notified by **COLLECT CALL** (Please Include Your Phone Number). Balance Due on Notification — No Items Sent Until Paid-In-Full. **All Postage & Insurance is EXTRA.**

SEND YOUR MAIL BIDS TO: GARY COOPER
202 S. MILL STREET
CLIO, MI 48420
PHONE: (313) 686-2158

Auctioneer's Special Note:

I wish to take this time to give a **VERY SPECIAL THANKS** to everyone who participated in any way (whether Big or Small) to make our First Carnival Glass Auction (March 31st & April 1st) such a success. I have received several Phone Calls and Letters and I know my Consigners wish to extend their Appreciation as well. We have set aside two dates for this Fall — so if you might be interested in Consigning **QUALITY CARNIVAL GLASS** for either of those Auctions — Please contact us as soon as possible so we can be way out front this time with our Catalogues and Advertising Campaign.

GARY COOPER

LISTED BELOW ARE SOME ABBREVIATIONS YOU MAY FIND USED THROUGHOUT THIS CATALOGUE:

MB - Millersburg	Am - Amethyst	MoM - Marigold on Milk Glass
NW - Northwood	Gr - Green	Vas - Vaseline
FN - Fenton	Aq,O - Aqua Opalescent	Cel - Celeste Blue
WE - Westmoreland	Aq - Aqua	PO - Peach Opalescent
IM - Imperial	Mrg. - Marigold	IB - Ice Blue
US - U.S. Glass	(R) - Red	IGr - Ice Green
JE - Jenkins	P - Purple	El.B - Electric Blue
ENG - English	Lav. - Lavender	Sm - Smoke

WE WILL FOLLOW THIS CATALOGUE IN NUMERICAL ORDER THROUGHOUT THIS AUCTION FOR EVERYONE'S CONVENIENCE. ANY ADDITIONS - DELETIONS - CORRECTIONS OR OTHER ANNOUNCEMENTS MADE DURING AUCTION TAKE PRECEDENCE OVER PRINTED MATTER.

- | | |
|---|---|
| 1. "Birds & Cherries" - Compote - Cobalt - FN | 28. "Dugan Cherry" - 6½" C.R.E. Ftd. Bowl - P.O. - (Beautiful) |
| 2. "Be Wise Owl" - Bank - Mrg. | 29. "Singing Birds" - Purple - Mug |
| 3. "Footed Shell" - Lg. Mint Dish - Olive Green | 30. "Thistle" - 8½" Bowl - Green |
| 4. "Six Panels" - Fr. 7¼" Candlesticks - FN | 31. "Double Scroll" - Pair Candleholders - Smoke |
| 5. "Flared Panels" - Elec. Shade - Marigold on Milk Glass | 32. "Meander" - 9" Ftd. Bowl - Ice Gr. Opal. - Not Carnival |
| 6. "Piggy" - Bank - Adv. "Save w/Marathon" - Mrg. | 33. "Pansy" - Oval Dish - Amber |
| 7. "Open Rose" - Rosebowl - Amber | 34. "Flute" - Sherbet - Gr. - NW |
| 8. "Waterlily & Cattails" - 5½" Saucer/Like Plate Whimsey | 35. "Grape, Imp." - 8½" Vase (Water Jug) - Purple - Nice Irid. |
| 9. "Little Flowers" - 10" C.R.E. Bowl - Green (Nice) | 36. "Rope of Beads" - 66" Long - Gr. - Pretty & Scarce |
| 10. "Coin Dot" - Lg. Stippled Rosebowl - Green | 37. "Scroll Embossed" - 5½" Bowl - El.B on Purple Base Glass |
| 11. "Frosted Block" - 5½" Nut Bowl - White - "Made In U.S.A." | 38. "Rustic" - 10½" Vase - Purple |
| 12. "Question Marks" - Compote - P.O. - | 39. "Daisy & Drapes" - 6½" Vase - White |
| 13. "Windflower" - 9" Plate - Mrg. | 40. "Thin Rib" - 9" Jack-in-the-Pulpit Vase - Mrg. - NW |
| 14. "Waffle Block" - Handled Basket - Clambroth | 41. "Double Loop" - Sugar Bowl - Cobalt - NW |
| 15. "Grape, Imp." - Handled Tray - Smoke - Scarce in this Color | 42. "Cherries" - "ROBT. HANSON" Spooner - Red (Outstand. Color) |
| 16. "Grape & Cable" - 5" Berry Bowl - Purple - NW | 43. "Crackle" - Spittoon - Mrg. Scarce |
| 17. "Grape, Imp." - Stemmed Wine - Green | 44. "TOP-OF-THE-WALK" (Rooster) Hat Pin - Amber (Scarce Color) |
| 18. "Grape, Imp." - Stemmed Wine - Purple✓ | 45. "Colonial" - Child's Mug - Mrg.. |
| 19. "Polo" - Ashtray - Mrg. | 46. "BEADED SHELL" - Mug - Purple |
| 20. "Flowers & Frames" - 8" Deep Bowl - P.O. - Nice & Different Shape | 47. "Covered Hen" - Cov. Butter - Marigold |
| 21. "Diamond Ring" 9" Bowl - Smoke | 48. "Wreath of Roses" - (2) Punch Cups (2 X \$) |
| 22. "Imp. Jewels" - Flower Frogs (2) - Gr. & Blue (Choice Out) | 49. "Grape & Cable" - Punch Cup - Mrg. - NW |
| 23. "Grape & Cable" - Hat - Am. - NW | 50. "Lustre Flute" - Punch Cup - Green (Minor Roughness on Rim) |
| 24. "Pineapple" - Creamer - Mrg. - Eng. | 51. "Field Flower" - 7 Pc. Water-set - Marigold |
| 25. "Thin Rib & Drape" - 5" Morning Glory Vase - Mrg. | 52. "Panelled Diamond & Bows" - ("Boggy Bayou") - Vase - Mrg. |
| 26. "ROCOCO" - 4½" Vase - Mrg. (Nice) | |
| 27. "Roll Top" - Whimsey Hat Shape - Marigold | |

53. "Fine Rib" - $9\frac{1}{2}$ " Vase - Aqua
54. "Birds & Cherries" - Bon Bon - (Card Tray) - Purple - FN
55. "Bird w/Grapes" - Wall Pocket - Marigold -
56. "Standard" - $5\frac{1}{2}$ " Vase in S.P. Holder - Marigold
57. "Boutonniere" - Compote - Amethyst - MB
58. "Dutch Twins" - Ash Tray - Mrg.
59. "Persian Med." - $5\frac{1}{2}$ " Berry - Gr.
60. "Footed Shell" - Sm. Mint Dish - Aqua
61. "1974 I.C.G.A." Conv. Plate - Purple - Souvenir (New)
62. "KITTENS" - Spooner - Mrg.
63. "Wide Panel" - $14\frac{1}{2}$ " Med. Funeral Vase - Green - NW
64. "Thin Rib" - $11\frac{1}{2}$ " Vase - Ice Green - NW (Not Carnival)
65. "Diamond Point" - 10" Vase - Lime Gr. Opal. (Not Carnival)
66. "Feathers" - $7\frac{1}{2}$ " Vase - Green - Not Common in this Color
67. "Fine Rib" - $7\frac{1}{2}$ " Vase - Gr.-NW
68. "Star & File" - Creamer - Mrg.
69. "Star & File" - Spooner - Mrg.
70. "Scroll Embossed" - Compote - Purple (Not Usual Shape or Color)
71. "Star Med." - Compote - Mrg.
72. "Columbia" - Compote - Mrg.
73. "Sun Rays" - Compote - MoM
74. "Little Beads" - Compote - Amber - Westmoreland
75. "Wheels" - 10" Bowl - Mrg. - (Marked "Near Cut")
76. "Holly Sprig" - $7\frac{1}{2}$ " Bowl - Purple - Millersburg
77. "Stippled Rays" - $9\frac{1}{2}$ " Bowl - Gr. - Fenton - (Great Color)
78. "Heavy Grape" - $9\frac{1}{2}$ " Berry Bowl - Mrg. - Imperial
79. "Panther" - Sm. Berry - Cobalt - ("Heart & Vine") Scarce Color
80. "Question Marks" - Stem. Bon Bon - Pastel Yellow/Green
81. "Scales" - $6\frac{1}{2}$ " Plate - Amber - Westmoreland - Scarce Color
82. "Imperial Grape" - $6\frac{1}{2}$ " Plate - Purple - (Good Iridization)
83. "Vintage" - $6\frac{1}{2}$ " Bowl - Mrg. - FN
84. "Crab Claw" - $4\frac{1}{4}$ " Berry Bowl - Smoke - Scarce Color
85. "Broken Arches" - Punch Cup - Mrg.
86. "Imp. Grape" - Goblet - Mrg.
87. "Fashion" - Lg. Rosebowl - Mrg.
88. "Moonprint" - $8\frac{1}{2}$ " Pedestal Ftd. Bowl - Mrg. - Scarce Eng. Pattern
89. "Headdress" - 12" Bowl - Mrg. (Very Lg. Bowl in Carnival)
90. "Orange Tree" - Mug - Mrg..
91. "Int. Panels" - Hat - Purple - Dugan (Super Color)
92. "Stretch" - Cov. Candy Dish - Super Vaseline (Not Carnival)
93. "Caroline" - 9" Collar Base Bowl - FO - Dugan
94. "Three Fruits" - $8\frac{1}{2}$ " Plate - Marigold - NW
95. "Cherries & Blossoms" - (2) Tumblers - Cobalt (Choice Out)
96. "Octagon" - Goblet - Mrg. - Nice
97. "474" - 7 Pc. Waterset - Mrg.
98. "Leaf Rays" - Nappy - White - Dugan (Good Iridization)
99. "Pansy" - Creamer - Aqua - Scarce Color in this Pattern
100. "Big Basketweave" - Handled Basket Whimsey
101. "Vintage" - Powder Jar - Purple - Dugan (Cover Mended-Hard-to-Find)
102. "Star Med." - Tumbler - Mrg.
103. "Floral & Grape" - Tumbler - Mrg.
104. "Tiger Lily" Tumbler - Green
105. "Blackberry Block" - Tumbler - Marigold - Fenton
106. "Basketweave" - $6\frac{1}{2}$ " Ice Cream Shape w/2 Row Open-Edge - White
107. "Blackberry Spray" - Jack-in-the Pulpit Hat - Mrg.
108. "Orange Tree" - Hat - Ice Blue w/Mrg. Overlay (Odd Color)
109. "POPPY SHOW" - $8\frac{1}{2}$ " Bowl - White - NW (Real Beauty)
110. (5) Carn. Glass Buttons - "Diamond Hobnail" - "Bridge" - "Wheat & Dia." - "Fleur-de-Lis" and "Wagon Wheel" (All On)
- 110.A (2) Small Glass Display Shelves (Choice Out)
111. "Zipper & Dia. Band, Vt." - $5\frac{1}{2}$ " Candy Dish - Sowerby Eng.
112. "Star of David" - $8\frac{1}{2}$ " Bowl - Purple (Sm. Chip on Base)
113. "Floral & Optic" - Ftd. Cake Plate - Clambroth (Nice Irid.)
114. "Grape & Cable" - Bon Bon - Green - NW
115. "BASKETWEAVE" - 2/Row Open-Edge Basket - RED
116. "Premium, Vt." - Swirl Base Candlestick - Mrg.
117. "Grape & Gothic Arches" -- Sugar Bowl - Mrg.
118. "Coin Spot" - Compote - FO -
119. "Maple Leaf" - Cov. Butter - Marigold

120. "Maple Leaf" - Spooner - Marigold - Dugan
121. "Maple Leaf" - Creamer - Marigold - Dugan
122. "Wide Panel" $7\frac{1}{2}$ " Bowl - Teal - WM (A Pretty One)
123. "Chrysanthemum Sprig" - Compote - Custard w/Slight Iridization - 1890
124. "PEACOCK AT THE FOUNTAIN" - 5" Berry - ICE BLUE - Good Color - NW
125. "Poinsettia" - Milk Pitcher - Deep Marigold
126. "FOOTED DRAPERY" - 8" Bud Vase - NW - Scarce in Carn.
127. "Wreath of Roses" - Whimsey Candy Dish from Rosebowl - Mrg.
128. "Feathers" - 10" Vase - NW - Gr. Opal (Not Carn. but Pretty)
129. "Wreathed Cherry" - Spooner - Marigold
130. "Wreathed Cherry" - Sugar w/No Cover - Marigold
131. "Lustre Rose" $11\frac{1}{2}$ " Ftd Bowl - Smoke (Scarce Color & Shape)
132. "Twins" - 2 Pc. Fruit Bowl - Mrg. (Chip on Base)
133. "INVERTED FEATHER" - Cracker Jar - Green - Cambridge
134. "Diamond Ring" - $9\frac{1}{2}$ " Bowl - Green (Not a Common Color)
135. "Diamond Point Column, Vt." - $15\frac{1}{4}$ " Med. Funeral Vase -
136. "Zipper Loop" - Finger Lamp - Mrg. (Rare but Cracked Font)
137. "Wreath of Roses" - Compote - Green - Fenton
138. "Cherry Chain, Vt." - 9" Bowl - White (A Real Beauty)
139. "SWAN" Souvenir "Cilmanagh, Mi." - Purple
140. "ACORN BURRS" ("Chestnut") - 7 Pc. Waterset - Am. - NW
141. "Floral & Optic" - $7\frac{1}{2}$ " Ftd. Bowl - Mrg. on Milkglass
142. "Shriner" - Champagne - 1911 (Clear Glass)
143. "Tree Trunk" - 13" Vase - Amethyst
144. "Windflower" - 9" Plate - Cobalt (Nice Plate)
145. "Star Med." - Bon Bon - Mrg. (Not Often Seen)
146. "Grape & Cable" - 7 Pc.. Waterset - Mrg. - NW
147. "474" - 7 Pc. Punch Set - Mrg. (Nick on one Flute)
148. "Hattie" - $8\frac{1}{2}$ " Bowl - Smoke
149. "Waterlily & Cattail" - 10" Bowl - Green (Unusual Piece)
150. "Rays & Ribbons" - $9\frac{1}{2}$ " Bowl - Purple - Millersburg
151. "Cane & Lace Edge" - $5\frac{1}{2}$ " Bowl - Lime Gr. (Not Carn. but Nice)
152. "Leaf Swirl" - Compote - Amber
153. "Waterlily & Cattails" - Tumbler - Marigold
154. "Fresia" - Enam. Tumbler - Mrg.
155. "Hobstar Flower" - Compote - Mrg. - Scarce
156. "Holly" - Sherbet/Compote - Cobalt
157. "Imp. Grape" - Compote - Light Amber
158. "Grape Delight" - Rosebowl - Cobalt
159. "PEACOCK & URN" - $9\frac{1}{2}$ " Perry Bowl - Millersburg - Purple
160. "ROSE SHOW" - $8\frac{1}{2}$ " Bowl - Marigold - NW
161. "Lustre Rose" - Spooner - Super Purple (A Beauty)
162. "Coin Dot, Vt." - $8\frac{1}{2}$ " Bowl - Amber -- WM
163. "Imperial Grape" - $10\frac{1}{2}$ " Bowl - Mrg. (Good Color)
164. "Grape & Cable" - $8\frac{1}{2}$ " Bowl - Purple - NW (Basketweave Ext.)
165. "Pine Cone" - 6" Bowl - Cobalt
166. "Grapevine Lattice" - 7" Bowl - White (Ruff. Plate??) - Dugan
167. "Two Flowers" - $5\frac{1}{2}$ " Ftd. Bowl - Vaseline - FN
168. "Lotus & Grape" - Bon Bon - Gr.
169. "Waffle Block" - Nappy - Light Mrg. - Scarce
170. "Wide Panel" - Min. Jelly Compote - Mrg.
171. "Pansy" (Quilted Ext.) - Pickle dish - Am. - Imperial
172. "Sailboats" - Wine - Mrg. - FN
173. Stretch - 4 Pc. Waterset -- Green/Vaseline? - Very Nice
174. "Dragon & Lotus" - 8" Spatula Ftd. Bowl - Mrg.
175. "Louisa" - Ftd. Nut Bowl - Gr.
176. "Star & File" - $8\frac{1}{2}$ " Crystal Bowl (Not Carnival)
177. "Wild Rose" - $6\frac{1}{2}$ " Ftd. Bowl - Gr. Opal. (Not Carn. but Nice)
178. "Leaf & Beads" - Ftd. Rosebowl - Green - NW (Some Bead Damage)
179. "Birds & Cherries" - Compote - Green - Fenton
180. "Rustic" $11\frac{1}{2}$ " Vase - Cobalt (Good Color)

181. "April Showers" - 11" Vase - Am.
182. "Diamond & Rib" 11" Vase -- Gr.
183. "Thin Rib Swirl" - 10" Vase - Peach Opal.
184. "Rustic" - 6 $\frac{1}{2}$ " Vase - White w/Slight Smoke Tinge
185. "Holly Sprig" - Bon Bon -- Purple - MB
186. "Blackberry Spray" - Hat - Amber
187. "Singing Birds" - Mug - Mrg. - NW
188. "Three-in-One" - 8 $\frac{1}{2}$ " Bowl - Smoke - Imperial
189. "GOOD LUCK" - 8 $\frac{1}{2}$ " Bowl - Cobalt
190. "Ribbon Tie" - 8" Bowl - Cobalt
191. "Scroll Embossed" (File Ext.) - 9" Bowl - Mrg.
192. "Acanthus" - 8" Bowl - Green
193. "Holly" - Jack-in-the-Pulpit Hat - Vaseline (Very Nice)
194. "Peacock Tails, Vt." - Compote - Mrg. - Millersburg
195. "Coin Dot, Vt." 7 $\frac{1}{2}$ " Bowl - Ice Gr. or Pastel - Mrg. - WM - Strange Color
196. "Stork & Rushes" - Beaded Tumbler - Cobalt - Dugan
197. "Grape & Gothic Arches" - Tumbler - Pearl/Custard - NW
198. "Holly" - Compote - Pale Blue w/Mrg. Overlay (Unusual Color)
199. "Small Rib" - 5 $\frac{1}{2}$ Low Compote - Green - (Odd Shape)
200. "Butterfly & Berry" - 7 Pc. Waterset - Mrg. - FN (Nice Color)
201. "Waffle Block" - Sherbet - Clamb.
202. "HEARTS & FLOWERS" - Compote - AQUA OPAL. - NW (Very Fine)
203. "BLACKBERRY" - Hat - CHERRY RED -
204. "GRAPE & CABLE" - Banana Boat - Marigold - N.W.
205. "ORANGE TREE" - Cov. Butter - Mrg.
206. "Orange Tree" - Creamer - Mrg.
207. "Garland" - Rosebowl - Cobalt
208. "Lustre Flute" - Creamer & Sugar - Green - NW
209. BEADED HANDBAG w/Draw-string - Blue Beads - Beautiful & Scarce
210. "Corinth" - 9" Banana Bowl Vt. - Amber/Apricot - Dugan
211. "Blackberry" - Hat w/2 Row Open-Edge - Cobalt
212. "Cameo Ladies" - Elec. Shade - Tan/Brown & Etched (Unusual)
213. "Feather Scroll & Flowers" - Elec. Shade - White/Etched (Nice)
214. "Long Thumbprint" - 9" Vase - Green (1910)
215. "Cut Arcs" - 10" Vase - Green Opal. (Nice - Not Carnival)
216. "Diamond Point, Vt." - 15 $\frac{1}{2}$ " Med. Funeral Vase - Cobalt
217. "Star Med." - Goblet - Mrg.
218. "Vintage"- Fernery/Nut Bowl - Green - Fenton
219. "ORANGE TREE" - 9 $\frac{1}{2}$ " Plate - White - Fenton
220. "MEMPHIS" - 7 Pc. Punch Set - Marigold - NW
221. "Beaded Bullseye" - 8 $\frac{1}{2}$ " Vase - Uranium Green (Glow) - Dugan
222. "Thin Rib, Vt." 9 $\frac{1}{2}$ " Vase - Olive Gr. - NW
223. "Acorn Burrs" ("Chestnut") - Punch Cup - Green - NW
224. "Diamond" - Tumbler - Mrg. - Millersburg
225. "Peacock-at-the-Fountain" -- Tumbler - Purple - NW
226. "Imperial Grape" - 6 $\frac{1}{2}$ " Plate - Green
227. "STORK & RUSHES" - 7 Pc. Waterset - Mrg.. (Hard to Find)
228. "Primrose" - 10" Bowl - Mrg.
229. "Cherry Chain" - 9 $\frac{1}{2}$ " Ice Cream Bowl - Pastel Gr. - FN
230. "Stag & Holly" - 11" Ftd. Bowl - Mrg. - FN (Real Nice Lg. Bowl)
231. "Rays & Ribbons" - 10" Bowl - Green - MB
232. "Holly" 9" C.R.E. Bowl - Cobalt
233. "HEARTS & FLOWERS" - Compote - White - NW
234. "Beaded Panels" - Compote -- Light Mrg. - Westmoreland
235. "Petals" - 7 $\frac{1}{2}$ " Compote -- Purple - Dugan
236. "Butterflies" - Bon Bon - Gr.
237. "Florentine" - Pr. 8 $\frac{1}{2}$ " Candlesticks - Marigold
238. "Orange Tree" - Wine - Mrg.
239. "Hobnail Pump" - "Robt. Hanson" Green (Mfg. Hairline)
240. "Stork & Peacock" - "Robt. Hanson" - Child's Mug - Cobalt
241. "Eyewinker" - "Robt. Hanson" - Tumbler - Red (Mfg. Chip on Base)
242. "Bird Vase" - "Robt. Hanson"
243. "Hen on Nest" Base - Sm. Red - "Robt. Hanson" (Nice Pin Dish)
244. "SWAN" Master Salt - "Robt. Hanson"
245. "Vermont" Toothpick - "Robt. Hanson" - Cobalt
246. "Turkey" Toothpick - "Robt. Hanson" - Red - $\frac{1}{2}$ "Crack @ Tail
247. "Bells & Beads" 7" Tri-Corner Bowl - Purple (Great Irid.)
248. "Grapevine Lattice" 7" Plate - Marigold - Dugan
249. "Thunderbird" - 5 $\frac{1}{2}$ " Bowl - Purple - Australian

- _____ 250. "Concave Diamonds" - (4) Tumblers - Dark Ice Blue Stretch (4 X \$)
- _____ 251. "Headdress" - 8" Bowl - Cobalt
- _____ 252. "Hobnail" - 11 $\frac{1}{2}$ " Vase - Purple
- _____ 253. "April Showers" 12" Vase - Gr.
- _____ 254. "PEACOCK & URN" 9 $\frac{1}{2}$ " Plate - Marigold (Super)
- _____ 255. "Whirling Leaves" - 9" Bowl - Purple - MR
- _____ 256. "Strawberry" - 8 $\frac{1}{2}$ " P.C.E. Bowl - Mrg.
- _____ 257. "Autumn Acorns" - 8 $\frac{1}{2}$ " Bowl - Cobalt
- _____ 258. "Grape & Cable" - Bowl - Green (Flute Repaired)
- _____ 259. "Diamonds" - Unusual Bowl - Mrg. - Poss. Eng. (Deep Color)
- _____ 260. "Star & File" - Rosebowl - Mrg.
- _____ 261. "HONEYCOMB" - Rosebowl - PO
- _____ 262. "Persian Med." - Rosebowl/Hair Receiver - FN
- _____ 263. "Iris" - Compote - Amethyst
- _____ 264. "Beaded Panels" - Compote - Blue Opal. (Not Carnival)
- _____ 265. "Fuzzle" - Stemmed Bon Bon - Peach Opal (Repair on 1 Flute)
- _____ 266. "Fruits & Flowers" - Stemmed Compote/Bon Bon - Elec. Blue
- _____ 267. "Robin" - Mug - Marigold
- _____ 268. "Grape & Cable" - Cologne Bottle (Stopper Extv. Repair)
- _____ 269. "Grape & Cable" - Table set - Purple (4 Pcs. to be sold Individually)
- _____ 270. "Pansy" (Quilted Ext.) - Oval Dresser Tray/Plate - Mrg.
- _____ 271. "ACORN BURRS" ("CHESTNUT") 7 Pc. Punch Set - Gr. (Bowl has Mend)
- _____ 272. "Dragon & Lotus" - 9" Bowl - Cobalt - FN
- _____ 273. "Cobblestone" - 9" Bowl - Purple (Beautiful Irid.)
- _____ 274. "Grape Wreath" - 8 $\frac{1}{2}$ " Bowl - Marigold - MB
- _____ 275. "Orange Tree" - 8 $\frac{1}{2}$ " Bowl - Pastel Mrg. (Nice)
- _____ 276. "Blackberry Wreath" - 8" Bowl - Green - MB
- _____ 277. "Beaded Basket" - Handled Basket - Cobalt - Dugan (Scarce in this Color)
- _____ 278. "CORN BOTTLE" - Mrg. - Imp.
- _____ 279. "Blackberry Spray" - Hat - Blue w/Mrg. Overlay (Interesting Color Combination)
- _____ 280. "Parlor Panels" - 4 $\frac{1}{2}$ " Unswung Vase - Mrg.

- _____ 281. "Butterfly" - Bon Bon - Gr.
- _____ 282. "Panther" - 7 Pc. Ruff. Berry Set - Mrg. (Very Nice)
- _____ 283. "Imp. Grape" - Cup & Saucer - Deep Mrg. (Scarce Color)
- _____ 284. "Nautilus" - Sm. Oval Bowl - Custard (Not Carnival) NW
- _____ 285. "Double Star" - 7 Pc. Water-set - Camb. (Base Dam./Fit.)
- _____ 286. "BEADED CABLE" - Rosebowl - El.B - NW (Rare Color)
- _____ 287. "BLACKBERRY BRAMBLE" - Compote - Gr. (Very Scarce)
- _____ 288. "Grape & Cable" - 7 $\frac{1}{2}$ " Spat. Ftd. Bowl - Gr. - FN
- _____ 289. "Daisy Wreath" - 8 $\frac{1}{2}$ " Bowl - MoM. (Filled Base Bubble)
- _____ 290. "Holly" - 9" C.R.E. Bowl - Purple
- _____ 291. "EMBROIDERED MUMS" - 8 $\frac{1}{2}$ " El.B Bowl - NW (Real Beauty)
- _____ 292. "Leaf Chain" - 7" Bowl - Ruffled - White - FN
- _____ 293. "Imp. Grape" - 9 $\frac{1}{2}$ " Flat Plate - Odd Green (Scarce Color)
- _____ 294. "Persian Garden" - 6 $\frac{1}{2}$ " Plate - Marigold - Dugan
- _____ 295. "Holly" - Hat - Aqua/Blue - (Rare Color) Ding on Top
- _____ 296. "Basketweave/Cane" - 2 Row Open-edge Hat - Lime Green (Not Carnival)
- _____ 297. "Tree Trunk" 10 $\frac{1}{2}$ " Vase - Gr. Opal. (Nice - Not Carn.)
- _____ 298. "Diamond Point Column" - 8 $\frac{1}{2}$ " Vase - Green - Imp.
- _____ 299. "Ripple" - 12 $\frac{1}{2}$ " Vase - Gr.
- _____ 300. "Stippled Rays" - Sugar Bowl - Gr. (Scarce Color in this)
- _____ 301. "Memphis" - 6 Punch Cups -- Mrg. (All On - Some w/Dam.)
- _____ 302. "Daisy" - Handled Basket - Marigold
- _____ 303. "Peacock-at-the-Fountain" - Spooner - IB (Mended Flute)
- _____ 304. "Daisy & Plume" - Tri-Cornered Compote - Gr. (Scarce Shape)
- _____ 305. "Tornado" - Art Glass Vase - Mrg. w/Gr. Applique (Unusual & Would Grace any Collection)
- _____ 306. "Butterfly & Berry" - 8 $\frac{1}{2}$ " Vase - Mrg. (Sm. Base Chip)
- _____ 307. "POPPY SHOW" - 8 $\frac{1}{2}$ " Bowl - White (Beautiful & Desirable)
- _____ 308. "Acorn" - 7" Bowl - Vaseline - Rare in Color & Pattern)
- _____ 309. "Three Fruits" - 8 $\frac{1}{2}$ " Collar Base Bowl - Gr. - NW

- | | |
|---|--|
| <p>_____ 310. "Daisy & Plume" - 8" Ftd.
Bowl - Purple - NW</p> <p>_____ 311. "SCALE BAND" - 6$\frac{1}{2}$" Bowl -
Rev. Amberina - Fenton -
(Rare & Beautiful)</p> <p>_____ 312. "Round-up" - 9" Ruff. Plate/
Bowl? - PC (Great Irid.)</p> <p>_____ 313. "Basketweave" - 2-Row Open-
Edge Hat - Aqua (Rim Chips)</p> <p>_____ 314. "KITTENS" - Cup & Saucer -
Mrg. (Quite Scarce)</p> <p>_____ 315. "Holly" - Sm. Compote -
Lg. Am. w/Mrg. Overlay</p> <p>_____ 316. "Iris" - Coblet - Mrg.</p> <p>_____ 317. "Shell & Jewel" - Creamer
& Sugar - Green</p> <p>_____ 318. "Little Fishes" - 5$\frac{1}{2}$" Ftd
Bowl - Amethyst</p> <p>_____ 319. "Blackberry Spray" - Hat -
Vaseline (Good Glow)</p> <p>_____ 320. "Grape Arbor" - 7 Pc Water-
set - Mrg. (Open Bubble on
Pitcher)</p> <p>_____ 321. "Lustre Rose" - 8$\frac{1}{2}$" Bowl -
Green (Color not Common)</p> <p>_____ 322. "Fine Prisms & Dia. Band" -
12" Funeral Vase - Mrg. -
Eng. - (Very Scarce/Rare)</p> <p>_____ 323. "Ski Star" - 9" C.R.E. Bowl
(Compass Ext.) - Purple (Nice)</p> <p>_____ 324. "Greek Key" - Tumbler - Gr.</p> <p>_____ 325. "Hearts & Flowers" - 9" Bowl -
IB - (2 Sm. Rim Chips)</p> <p>_____ 326. Carnival Buttons (5) "Beaded
Flower" - "Cross & Hobbs, Vt." -
"Bars & Feather Stitch" -
"Harem" - "Screen & Sparkle"
(Very Nice) All On</p> <p>_____ 327. "CAPTIVE ROSE" - 9$\frac{1}{2}$" Plate -
Cobalt (A Super Plate)</p> <p>_____ 328. "Stag & Holly" - 7$\frac{1}{2}$" Spat.
Ftd. Bowl - Cobalt (Nice)</p> <p>_____ 329. "Wishbone" - 8" Ftd Bowl - Gr.</p> <p>_____ 330. "Persian Med." - 6$\frac{1}{2}$" Plate - Mrg.</p> <p>_____ 331. "DRAPERY" - Rosebowl - Aq.O - NW</p> | <p>_____ 332. "French Knots" - Hat - Cobalt.</p> <p>_____ 333. "Basketweave" - 2-Row Open-
Edge Hat - Vaseline (Hairline)</p> <p>_____ 334. "DRAPERY" - Rosebowl - Aq.O -
NW (Poss. Grinding on Base)</p> <p>_____ 335. "Lined Lattice" - 5" Vase -
PC (Opaline) Unusual</p> <p>_____ 336. "Grape Wreath, Vt." No. 2 -
Ruff. Plate - Purple - MB</p> <p>_____ 337. "Strawberry" - Bon Bon -
Vaseline (Scarce in this
Pattern)</p> <p>_____ 338. "Flute No. 3" - Toothpick -
Green - (Sm. Chip)</p> <p>_____ 339. "Peacock-at-the-Fountain" -
Spooners - Purple - NW (Very
Good Color)</p> <p>_____ 340. "Louisa" - 8$\frac{1}{2}$" Bowl - Purple</p> <p>_____ 341. "Small Rib" - Low Compote -
Green (Unusual Shape)</p> <p>_____ 342. "Fashion" - Creamer & Sugar
w/Crack - Mrg. (Both On)</p> <p>_____ 343. "Lustre Rose" - Cov. Butter -
Mrg. (Chip on one Flute)</p> <p>_____ 344. "Lustre Rose" - Creamer - Mrg.</p> <p>_____ 345. "Octagon" - 8$\frac{1}{2}$" Bowl - Mrg. -
"To Margaret Xmas 1925 - From
Sister Mary" (Cracked)</p> <p>_____ 346. "Three Fruits" - 8$\frac{1}{2}$" Bowl -
Green - NW</p> <p>_____ 347. "Autumn Acorns" - 8" Bowl
Green - FN</p> <p>_____ 348. "Diamond Lace" - 9" Bowl -
Purple (Super Irid.)</p> <p>_____ 349. "Grape Leaves" - 9" Bowl -
Purple ("Wild Rose" Ext.)</p> <p>_____ 350. Pair of Dome-Shaped Irid-
ized Ceiling Fistures</p> |
|---|--|

NOTE: We wish to Thank everyone for your participation in this Carnival Glass Auction.

CONTACT US EARLY WITH YOUR CONSIGNMENTS - WE HAVE BOOKED 5 DATES THIS FALL AT "SHERATON INN" - FLINT, MI.

PERSONAL NOTES

AUCTION RULES

Each Piece offered for sale to the highest bidder is numbered for your convenience and will be sold in numerical order. All of the rules and procedures have been kept easy to understand and few in number for your enjoyment.

PLEASE READ THESE AUCTION RULES!!!

1. The Bid Number assigned to you is good for both days and you may pay for both days' purchases on Saturday if you choose. You are responsible for all items purchased on that number. If that number is lost report it immediately.
2. Auctioneer and all personnel are in fact agents for the owners of this merchandise and do not warrant the origin of any items.
3. Every effort will be made to call any damage on glass. After you have made a purchase you will have 15 minutes to inspect said item — NO glass will be returned or turned back in after this time period. All glass being returned must be inspected by Buck Walraven and you will be asked for what reason it is being returned. STRAW MARKS and MANUFACTURERS FLAWS are not considered damage.
4. In the event of a tie bid the Auctioneer's word shall be final on whether the bid shall be reopened. If any dispute arises after the sale; our sale record is conclusive. **THIS SALE IS BEING TAPED.**
5. All sales final. Any announcements made during sale take precedence over printed matter. You must inspect the glass yourself or buy without inspection strictly at your own risk.
6. Having been read these rules of this sale, if for any reason you cannot or will not comply — DO NOT BID. You are welcome to stay and observe however we must insist on strict compliance in every matter. Our aim is to run a fair and orderly sale for both the sellers and buyers. If you have any questions during the sale — feel free to stop us at anytime. ANY QUESTIONS ???

**IF YOU HAVE ITEMS YOU WOULD LIKE TO CONSIGN
TO ONE OF OUR QUALITY AUCTIONS — PLEASE GIVE US A CALL!!!**



*When It Comes to Glass
We Use A Touch Of Class*



202 South Mill Street
Clio, Michigan 48420



GARY COOPER, Auctioneer

PRESORTED
FIRST CLASS

