

TWO-DAY

QUALITY

TWO-DAY

## "CARNIVAL GLASS AUCTION"

FRIDAY, MARCH 31st - 6:30 P.M.

(Hors d'oeuvres Preview 3-6 P.M.)

SATURDAY, APRIL 1st - 10:30 A.M.

(Preview 8:30 P.M.)

### "SHERATON INN"

G-4300 W. PIERSON ROAD - FLINT, MICHIGAN

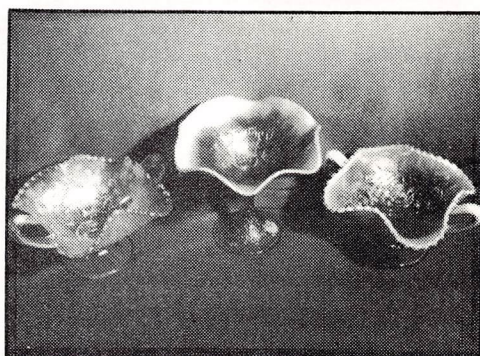
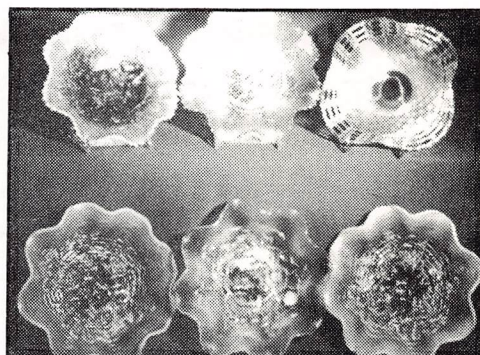
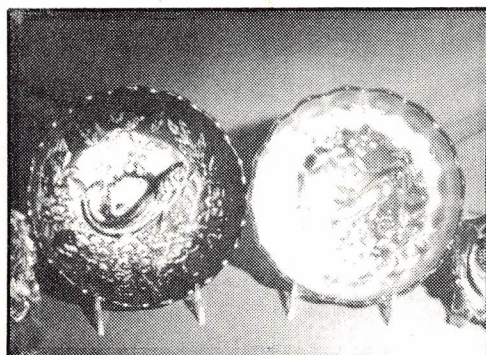
#### DIRECTIONS:

Take I-75 to EXIT 122 (Pierson Road - Flushing). The "SHERATON INN" is located on the N.W. side just West of I-75.

"COOPER'S AUCTION SERVICE" takes great pride in presenting a CHOICE Diversified Selection of CARNIVAL GLASS. This is the first time we have offered an All Carnival Glass Auction in Michigan. We have gathered over 500 Catalogued Lots of CHOICE/QUALITY CARNIVAL GLASS (W/MANY RARITIES). If you enjoy PEACOCK PATTERNS or are a "MILLERSBURG" BUFF - You won't want to miss this Auction!!!

PLEASE PLAN TO JOIN US - WE WILL APPRECIATE YOUR SUPPORT.

#### GARY COOPER



*When It Comes to Glass  
We Use A Touch Of Class*

GARY COOPER, Auctioneer  
202 SOUTH MILL STREET  
CLIO, MICHIGAN 48420

#### FOR ADDITIONAL INFORMATION

CALL: Gary (313) 686-2158  
or BUCK WALRAVEN - Saginaw  
(517) 791-3190 SALES MANAGER  
CLERK: Marci Zissler  
CASHIER: Mary Zissler



## " CARNIVAL GLASS AUCTION "

FRIDAY, MARCH 31st - 6:30 P.M. (Preview 3-6 P.M.)

SATURDAY, APRIL 1st - 10:30 A.M. (Preview 8:30 A.M.)

" SHERATON INN " (I-75 at Exit 122 - Pierson Road ) FLINT, MICHIGAN

MOTEL RESERVATIONS: We have blocked off a number of Rooms at the "SHERATON INN" - FLINT, MICHIGAN at a Special Rate of \$50. (Single or Double). In Order to Guarantee those rooms at that Special Rate - You must call the Sheraton Inn (313) 732-0400 to make your reservations NO LATER THAN MARCH 20th in order to Guarantee those rooms at that Special Rate. I will also list two other Motels that are within walking distance of the Sheraton Inn and their Phone Numbers just in case they are filled or you prefer another Motel: "BEST WESTERN" - G-4380 W. Pierson Road - Flint, MI or "WALLI'S MOTOR LODGE WEST" - G-4160 W. Pierson Road - Flint, MI (313) 789-0400 - "Walli's" also offers a marvelous Smorgasbord Nightly.

PREVIEW: All Glass for Both Days will be on Display for our "HORS D'OEUVRES PREVIEW" - FRIDAY, MARCH 31st from 3 P.M. - 6 P.M. and SATURDAY, APRIL 1st from 8:30 A.M. - 10:30 A.M. with Complimentary Coffee and Donut Holes. FOOD and DRINKS will be available on FRIDAY EVENING you might want to make reservations for the Sheraton Inn's Seafood Buffet which will be available beginning at 5 P.M. at "ARTHUR'S" (An Excellent Choice).

TERMS: Payment for all purchases must be made IN FULL on day of sale by: CASH or CHECK w/proper I.D.'s. OUT-OF-STATE Checks must be approved in Advance unless known by Auctioneer or Buck Walraven, Sales Manager (517) 791-3190.

ABSENTEE or WRITE-IN BIDS: A 25% Deposit Required on ALL Pieces Bid On. Inquireies Are Welcome by Phone, However, Bids Will Not Be Taken by Phone as We Must Receive Your Deposit by Thursday, MARCH 30th, 1989 For Bids to Be Applicable. \* Items are in Perfect Condition w/ Average or Above Irridescence or So Listed in catalogue. Bids Will Not be Carried Out When Damage Has Been Found During the Auction. \* Bids That Are Not Successful Will Receive Their Deposit Check Within 5 Working Days After Auction. \* Successful Bidders Will Be Notified by COLLECT CALL (Please Include Your Phone Number). Balance Due on Notification - No Items Sent Until Paid-In-Full - All Postage & Insurance is EXTRA. \* Send Mail Bids To: GARY COOPER - 202 S. MILL STREET - CLIO, MI 48420 - Ph.: (313) 686-2158.

### AUCTION RULES

Each Piece offered for sale to the highest bidder is numbered for your convenience and will be sold in numerical order. All of the rules and procedures have been kept easy to understand and few in number for your enjoyment. PLEASE READ THESE AUCTION RULES!!!

1. The Bid Number assigned to you is good for both days and you may pay for both days purchases on Saturday if you choose. You are responsible for all items purchased on that number. If that number is lost report it immediately.

2. The Auctioneer and all personnel are in fact agents for the owners of this merchandise and do not warrant the origin of any items.



LISTED BELOW ARE SOME ABBRECIATIONS YOU MAY FIND USED THROUGHOUT THIS CATALOGUE:

M.Brg.	-- Millersburg	Am	----	Amethyst	MoM	-- Marigold on Milk Glass
N.W.	-- Northwood	Gr.	--	Green	Vas.	-- Vaseline
Fen.	-- Fenton	Aq.O	--	Aqua Opalescent	Cel.	-- Celeste Blue
West.	-- Westmoreland	Aq	--	Aqua	PO	-- Peach Opalescent
Imp.	-- Imperial	Mrg.	--	Marigold	El.B	-- Electric Blue
U.S.	-- U.S. Glass	Lav.	--	Lavender	Sm.	-- Smoke

WE WILL BE FOLLOWING THE CATALOGUE IN NUMERICAL ORDER THROUGHOUT THIS AUCTION FOR EVERYONE'S CONVENIENCE. WE WILL SELL APPROXIMATELY 150 LOTS FRIDAY EVENING - MARCH 31st THEN BEGIN PROMPTLY AT 10:30 A.M. - SATURDAY - APRIL 1st SELLING THE REMAINDER.

<u>100</u>	1.	"Lions" - Ruffled Bowl - Mrg.	<u>50</u>	23.	"DRAGON & LOTUS" - 7" Spat. Ftd. Bowl - VASELINE
<u>50</u>	2.	"Wishbone" - Ftd. Bowl - Am.		24.	"Persian Medallion" - 5" Ice Cream Dish - Blue
<u>30</u>	3.	"Thistle" - Compote - Am.	<u>30</u>	25A.	"Singing Birds" - Mug - Mrg. (Choice)
<u>160</u>	4.	"Fashion" - 5 Pc. Waterset - Marigold	<u>30</u>	25B.	" " " " " "
<u>200</u>	5.	"HORSES' HEADS" - 7 $\frac{1}{2}$ " PLATE Marigold	<u>45</u>	26.	"Fisherman's" - Mug - Amethyst
<u>60</u>	6.	"Horses' Heads - 5 $\frac{1}{2}$ " Flat Bowl - Marigold	<u>35</u>	27.	"Orange Tree" - Mug - Blue
<u>200</u>	7.	"Horses' Heads" - Ftd. Nut Dish - Amethyst	<u>70</u>	28.	"BEADED SHELL" - MUG - AMETHYST
<u>100</u>	8.	"Horses' Heads" - Rosebowl - Marigold	<u>25</u>	29.	"Robin" - Mug - Marigold
<u>70</u>	9.	"Strawberry" - 9" Bowl PCE - Amethyst	<u>300</u>	30.	"Butterfly & Berry" - 7 Pc. Waterset - Marigold
<u>40</u>	10.	"Sunflower" - Spat. Ftd. Bowl Marigold	<u>90</u>	31.	"Orange Tree" - 8" Bowl - Blue
<u>80</u>	11.	"Birds & Cherries" - Bon Bon - Gr.	<u>25</u>	32.	"Question Marks" - Compote - Mrg.
<u>45</u>	12.	"BLACKBERRY SPRAY" - HAT - AQUA	<u>40</u>	33.	"Butterfly" - Bon Bon - Blue - Fen.
<u>80</u>	13.	"Panther" Master Berry w/One Individ. Berry - Marigold	<u>150</u>	34.	"PEACOCKS" - 9" Ruff. Bowl - Am. - NW
<u>2x35</u>	14.	"Panther" (2) 5" Ruff. Berries - Marigold	<u>70</u>	35.	"Target" - 5" Squat Vase - PO
<u>60</u>	15.	"Wild Rose" - Open-Edge Nut Dish - Green - N.W.	<u>70</u>	36.	"Holly Sprig" - 10" Ruff. Bowl - Gr. - M.Brg.
<u>45</u>	16.	"A.B.C. Stork" - Plate - Mrg.	<u>45</u>	37.	"Folding Fan" - Compote - PO
<u>175</u>	17.	"Stag & Holly" - 8" Spat. Ftd. Bowl - Blue	<u>50</u>	38.	"Grape Delight" - Rosebowl - Am.
<u>45</u>	18.	"Long Hobstar" - Fruit Bowl - Marigold	<u>70</u>	39.	"INVERTED STRAWBERRY" - <del>7" BOWL</del> - GREEN - CAMBRIDGE NEAR CUT
<u>80</u>	19.	"Grape & Cable" - 6" Handgrip Plate - Am. - N.W.	<u>45</u>	40.	"Inverted Feather" - Compote - Marigold - Cambridge
<u>70</u>	20.	"Stream of Hearts" - Compote - Marigold	<u>155</u>	41.	"PEACOCK & URN" - 10" Bowl - Am. - MILLERSBURG
<u>75</u>	21.	"Grape, Imp." - Decanter w/4 Wines - Gr. (Damage on Stopper)	<u>150</u> <u>95</u>	42.	"GOOD LUCK" - 8" RUFF. BOWL - El. B.
<u>70</u>	22.	"Iris" - Compote - Amethyst	<u>95</u>	43.	"Daisy Block" - Rowboat - Mrg. - Eng.
			<u>80</u>	44.	"Stag & Holly" - 10" Ftd. Bowl - Mrg.
			<u>165</u>	45.	"Stag & Holly" - 10" Ftd. Bowl - Am.
			<u>45</u>	46.	"Cherry"-9" Ftd. Bowl - Mrg. - Dugan
			<u>35</u>	47.	"Greek Key" - Dome-Ftd. Bowl - Gr.-N
			<u>75</u>	48.	"Beads & Wildflowers" - 7" Plate - Peach Opalescent - Dugan



<u>65</u>	49.	"Leaf & Beads" - Rosebowl - Am.	<u>65</u>	81.	"Star of David & Bows" - 7" Ruff. Bowl - Amethyst
<u>170</u>	50.	"Grape & Cable" - Hatpin Holder - Marigold - N.W.	<u>45</u>	82.	"Rags & Ribbons" - 10" Ruff. Bowl - Green - Millersburg
<u>50</u>	51.	"Tiger Lily" - Water Pitcher - Mrg.	<u>35</u>	83.	"Rays & Ribbons" - 10" Ruff. Bowl Marigold - Millersburg
<u>300</u>	52.	"STRAWBERRY" - BON BON - RED w/ (Amberina)	<u>85</u>	84.	"Stag & Holly" - 8" Spat. Ftd. Bowl - Amethyst
<u>60</u>	53.	"Holly" - 9" Bowl 3 in 1 Edge - Marigold - Fenton	<u>65</u>	85.	"Stag & Holly" - 8" Spat. Ftd. Bowl - Marigold
<u>105</u>	54.	"Peacock at the Fountain" - 5 Pc. Berry Set - Marigold - N.W.	<u>65</u>	86.	"Swirling Leaves" - 10" Ruff. Bowl - Amethyst - Millersburg
<u>75</u>	55.	"Blackberry Wreath" - 5" Bowl CRE - Pastel Amethyst - Millersburg	<u>70</u>	87.	"Beaded Panels" - Compote - PO
<u>45</u>	56.	"Grape Delight" - Nut Bowl - Purple	<u>325</u>	88.	"HEARTS & FLOWERS" - 10" Ruff. Bowl - ICE BLUE - NORTHWOOD
<u>50</u>	57.	"HANSON, ROBT." Sgnd. - "Wreathed Cherry" Spooner - Red	<u>50</u>	89.	"Grape, Imp." - Water Bottle - Gr.
<u>225</u>	58.	"HANSON, ROBT." Sgnd. - Fish/Bitters Bottle - Green	<u>70</u>	90.	"Wreathed Cherry" - Master Berry - Marigold
<u>65</u>	59.	HANSON" Pontil Signature - Flute Toothpick - Amethyst	<u>75</u>	91.	"Peacock" - 5" Berry - Am. - M.Brg.
<u>95</u>	60.	"HANSON, ROBT." Sgnd. - Red Rosebowl	<u>25</u>	92.	"Plain" - Buttermilk Goblet - Gr.
<u>135</u>	61.	"HANSON, ROBT." Sgnd. - Cobalt Blue Owl Paperweight	<u>70</u>	93.	"Octagon" - Milk Pitcher - Mrg..
<u>35</u>	62.	"Rustic" - 15" Vase - Mrg.	<u>95</u>	94.	"Three Fruits" - 9" Plate(?) - Am.
<u>25</u>	63.	"Pulled Loop" - 8" Vase - Am.	<u>60</u>	95.	"Wishbone" - 8" Ftd. Bowl - Am.
<u>55</u>	64.	"Lined Lattice" - 8" Vase - Am.	<u>60</u>	96.	"Grape & Cable" - 9" Ftd. Plate - Marigold - Fenton
<u>35</u>	65.	"Fine Rib" - 10" Vase - Cobalt	<u>150</u>	97.	"GRAPE & CABLE" - SWEETMEAT - Amethyst - Northwood
<u>45</u>	66.	"Blackberry Wreath" - 5" Ice Cream Dish - Gr. - M.Brg.	<u>50</u>	98.	"Persian Medallion" - Bon Bon - Blue
<u>25</u>	67.	"Grape, Imp." - 6½" Plate - Mrg.	<u>35</u>	99.	"Grape & Cable" - 7" Plate (2-Sides Up) - Amethyst - NW
<u>75</u>	68.	"Three Fruits" - 9" Plate - Mrg.	<u>140</u>	100.	"Windflower" - 9" Plate - Marigold
<u>225</u>	69.	"Springtime" - Spooner - Green	<u>65</u>	101.	"Grape & Cable" - Ftd. Orange Bowl - Marigold - Fenton
<u>175</u>	70.	"GOOD LUCK" - 9" RUFF. BOWL - GREEN - NORTHWOOD	<u>70</u>	102.	"Little Fishes" - Master Berry - Mrg.
<u>65</u>	71.	"Nesting Swan" - 10" Ruff. Bowl - Marigold - M.Brg.	<u>70</u>	103.	"Star of David" - 10" Ruff. Bowl - Purple
<u>85</u>	72.	"Little Fishes" - 5" Berry - Am.	<u>45</u>	104.	"Peacock & Grape" - 9" Ruff. Bowl - Marigold
<u>55</u>	73.	"Little Fishes" - 5" Berry - Mrg.	<u>45</u>	105.	"Diamond Lace" - 9" Bowl - Mrg..
<u>45</u>	74.	"Beaded Bullseye" - 10" Vase - Am.	<u>45</u>	106.	"Four Flowers" - 9" Bowl - Amethyst
<u>105</u>	75.	"Orange Tree" - Ftd. Fruit Bowl - Blue - Fenton	<u>100</u>	107.	"Grape & Cable" - 10" Ruff. Bowl - Amethyst - N.W. - A Beauty
<u>25</u>	76.	"Butterfly" - Bon Bon - Mrg. - Fen.	<u>60</u>	108.	"Dragon & Lotus" - 9" Bowl w/3 in 1 Edge - Marigold
<u>95</u>	77.	"Butterfly & Waratha" - Ftd. Cake Stand - Mrg. - Australian	<u>50</u>	109.	"Peacock & Urn" - 9" Ruff. Bowl - Mrg.
<u>55</u>	78.	"Acorn" - 8" Ruff. Bowl - Vaseline	<u>45</u>	110A.	Carn. Glass Beaded Purse
<u>75</u>	79.	"Lions" - 6" Deep Bowl - Mrg.	<u>35</u>	110B.	" " " " (CHOICE OUT)
<u>115</u>	80.	"Ski Star" - 10" Ruff. Bowl - PO			



<u>80</u>	111.	"Raspberry" - Sauceboat - Am. NW	<u>20</u>	141.	"Propeller" - (2) Small Compotes - Marigold (2 X \$)
<u>45</u>	112.	"Grape & Cable" - Creamer - Am.	<u>45</u>	142.	"Vintage" - Dresser Jar - Mrg.
<u>15</u>	113.	"Orange Tree" - Individ. Berry - Marigold - Fenton	<u>15</u>	143.	"Coin Spot" - Compote - Mrg.
<u>80</u>	114.	"Dragon & Lotus" - 9" Bowl - Blue	<u>75</u>	144.	"Flute" - Tumbler - Purple ✓
<u>25</u>	115.	"Star of David & Bows" - Dome Ftd. Bowl - Mrg. - NW	<u>25</u>	145.	Stretch Glass - Compote - Celeste Bl.
<u>35</u>	116.	"Stippled Rays" - 9" Bowl PCE - Am.	<u>20</u>	146.	Stretch Glass - 9" Bowl - White
<u>35</u>	117.	"Two Flowers" - 9" Spat. Ftd. Bowl - Marigold	<u>45</u>	147.	"Ball" - One Quart Jar - Marigold
<u>45</u>	118.	"Grape & Cable" - 9" Ruff. Bowl - Green - Northwood	<u>35</u>	148.	"Golden Wedding" Whiskey Bottle w/ Shot Glass - Marigold
<u>85</u>	119.	"Grape & Cable" - Banana Boat - Marigold - N.W.	<u>25</u>	149.	"Fruit Salad - Punch Cup & (2) "Grape, Imp." Punch Cups Mrg. & Gr. (All On)
<u>85</u>	120.	"Butterfly & Berry" (Fan-Tail Int.) Master Berry - Cobalt	<u>35</u>	150.	"Question Marks" - Bon Bon - Am.
<u>25</u>	121.	"Paneled" - Pr. Candlesticks - Irridized Blue Custard			THANK YOU!!!
<u>55</u>	122.	"Premium" - Pr. Candlesticks - Olive Green	<u>850</u>	151.	"POPPY SHOW" - 9" PLATE - MARIGOLD - N.W. (Super Color & Irridescence)
<u>60</u>	123.	"Octagon" - (6) Tumblers - Marigold - (6 X \$)	<u>55</u>	152.	"Fern" - Compote - Green - N.W.
<u>25</u>	124.	"Holly" - Hat - Cobalt - Fen.	<u>25</u>	153.	"Water Lily & Cattails" - Whimsey 5" Plate - Marigold
<u>125</u>	125.	"Wild Strawberry" - 7" Handgrip Plate - Amethyst - N.W.	<u>30</u>	154.	"Water Lily & Cattails" - Whimsey Toothpick - Marigold
<u>25</u>	126.	"Holly" - Hat - Marigold	<u>35</u>	155.	"Oriental Poppy" - Tumbler - Am.
<u>75</u>	127.	"Thistle" - Compote - Cobalt	<u>55</u>	156.	"Butterfly & Berry" - 7" Vase - Blue
<u>30</u>	128.	"Vintage" - 9" Bowl - Mrg.	<u>240</u>	157.	"Basketweave/Open-Edge" - 9" SQUARE BOWL - ICE GREEN (Very Nice)
<u>45</u>	129.	"Wreath of Roses" - Compote - Cobalt	<u>85</u>	158.	Peacock & Urn" - 9" Ruff. Bowl - Cobalt - Fenton
<u>20</u>	130.	"Cherry Circles" - Lg. Bon Bon - Marigold	<u>125</u>	159.	"KITTEENS" - TOOTHPICK - Mrg.
<u>80</u>	131.	"Dragon & Lotus" - 9" Bowl 3 in 1 Edge - Green	<u>40</u>	160.	"Peacock Tail" - Bon Bon - Mrg.
<u>30</u>	132.	"Iris" - Buttermilk Goblet - Mrg.	<u>50</u>	161.	"Boutonniere" - Compote - Mrg. - M.Brg.
<u>80</u>	133.	"Wild Rose" - Open-Edge Bowl - Am.	<u>150</u>	162.	"HOBNAIL" - ROSEBOWL - Mrg. - M.Brg.
<u>50</u>	134.	Carnival Glass Beads - Necklace 50"	<u>60</u>	163.	"Strawberry" - 9" Bowl PCE - Green
<u>95</u>	135.	"KITTEENS" - PLATE 4-Sides Up - Mrg.	<u>40</u>	164.	"Strawberry" - 9" Bowl PCE - Am.
<u>60</u>	136.	"Strawberry" - Bon Bon - Blue	<u>40</u>	165.	"Rainbow" - Compote - Green - N.W.
<u>90</u>	137.	"Captive Rose" - 9" Bowl 3 in 1 Edge - Cobalt	<u>150</u>	166.	"PERSIAN MEDALLION" - Bon Bon - Aqua
<u>180</u>	138.	"Orange Tree" - Punch Bowl w/Base & (8) Cups - Marigold	<u>90</u>	167.	"Dogwood Sprays" - Ruff. Dome Ftd. Bowl - Peach Opal.
<u>35</u>	139.	"Memphis" - Punch Bowl Base - White	<u>400</u>	168.	"Good Luck" - 9" Bowl PCE - Green
<u>15</u>	140.	"Grape & Cable" - Small Punch Bowl Base - Am. - N.W.	<u>160</u>	169.	"Good Luck" - 9" Bowl - Amethyst
			<u>50</u>	170.	"Good Luck" - 9" Bowl - Marigold
			<u>375</u>	171.	"GOOD LUCK" - 9" Stippled Bowl PCE - Elec. Blue (A Knock-Out)



- 35 172. "Butterfly" - Bon Bon - Green
- 175 173. "Acorn Burrs" - 5 Pc. Berry Set - Amethyst
- 375 174. "WISHBONE" - EPERGNE - Am.
- 50 175. "Holly Sprig" - Bon Bon - Amethyst - M.Brg.
- 425 176. "PEACOCKS" - 9" Bowl PCE - Lavender - Northwood NICE !!
- 150 177. "Amaryllis" - Compote - Purple
- 90 178. "STIPPLED RAYS" - Compote - ICE GREEN
- 75 179. "Double Stemmed Rose: - Dome Ftd. Bowl - Peach Opal.
- 350 180. DOUBLE STEMMED ROSE" - DOME FTD. BOWL - TEAL
- 200 181. "HEARTS & FLOWERS" - 10" RUFF. BOWL - ICE BLUE - N.W.
- 60 182. "TREE TRUNK" - 10" VASE - White NW
- 95 183. "Leaf Chain" - 7" Plate - Blue
- 140 184. "Wild Strawberry" - 7" Handgrip Plate - Amethyst
- 35 185. "Iris" - Buttermilk Goblet - Mrg.
- 175 186. "Maple Leaf" - Cov. Butter - Mrg.
- 50 187. "Maple Leaf" - Cov. Sugar - Mrg.
- 240 188. "Raspberry: - Water Pitcher - Am.
- 1000 189. "PEACOCK" - DEEP Master Berry Bowl - Green - Millersburg
- 40 190. "Leaf Panel" - 7" Vase - Purple
- 55 191. "Beaded Bullseye" - 10" Vase - Am.
- 60 192. "Four Pillar" - 9" Vase - Gr. - (Adv. "Howard Furniture Co.)
- 90 193. "Drapery" - 8" Vase - Aqua - (Flake on Foot)
- 35 194. "Fine Ribs" - 12" Vase - Glows Tangerine in Blacklight
- 250 195. "POPPY SHOW" - 9" Ruff. Bowl - WHITE - N.W.
- 125 196. "Three Fruits" - 9" Stippled Plate - Marigold
- 105 197. "Grape & Cable" - 9" Plate - Amethyst - N.W.
- 350 198. "Grape & Cable" - 9" Plate - Gr. - Northwood
- 2450 199. "GRAPE & CABLE" - 9" PLATE - AQUA - N.W. (Outstanding Piece)
- 120 200. "PEACOCK & DAHLIA" - Ice Cream Shape Bowl - AQUA
- 60 201. "Peacock & Dahlia" - 7" Plate - Custard w/Gr. Stain (Not Irridized)
- 50 202. "Question Marks" - Compote - Mrg.
- 90 203. "Apple Blossom Twigs" - 10" Ruff. Bowl - Amethyst
- 120 204. "Apple Blossom Twigs" - 10" Ruff. Bowl - Peach Opal.
- 250 205. "Fleur De Lis" - Dome Ftd. Tri-Cornered Bowl - Mrg. - M.Brg.
- 250 206. "Lions" - 7" Ruff. Bowl - Blue
- 10 207. "Lions" - 7" Bowl - Marigold
- 90 208. "ACORN" - 8" Bowl - MARIGOLD OPAL.
- 50 209. "Hanging Cherries" - Ice Cream 7" Bowl - Marigold
- 700 210. "BIG FISH" - 8" Ice Cream Shaped Bowl - MARIGOLD - M.BRG.
- 900 211. "TROUT & FLY" - 8" Ice Cream Shaped Bowl - Amethyst - M.Brg.
- 60 212. "Acorn" - 8" Bowl - VASELINE
- 85 213. "Scroll Embossed" - 8" Ruff. Bowl - Purple
- 250 214. "Peacock & Urn" - 9" Ruff. Bowl - Green - Fenton
- 70 215. "Peacock & Urn" - 9" Ice Cream Shaped Bowl - Mrg. - Fenton
- 275 216. "Wishbone" - 10" Bowl PCE - Purple
- 130 217. "Persian Medallion" - 10" Ruff. Bowl - Blue
- 1450 218. "GRAPE & CABLE" - MASTER PUNCH BOWL w/BASE & (15) Cups) - Am. - N.W.
- 85 219. "Three Fruits" - 9" Plate - Am.
- 60 220. "Three Fruits" - 9" Plate - Mrg.
- 375 221. "Good Luck" - 9" Plate - Am.
- 425 222. "Fleur De Lis" - Dome Base/Ice Cream Shape - Green - M.Brg.
- 90 223. "Butterfly & Berry" - 5 Pc. Berry Set - Marigold
- 65 224. "Singing Birds" - Mug - PASTEL AM.
- 45 225. "Singing Birds" - Mug - Marigold
- 50 226. "Singing Birds" - Mug - Custard (Not Irridized) - Stained
- 10 227. "Singing Birds" - Mug - Lavender (Internal Crack)
- 850 228. "PEACOCKS" - 9" Stippled Plate - ELEC. BLUE - N.W. (Super)
- 50 229. "Pony" - 9" Ruff. Bowl - Marigold
- 600 230. "TORNADO" VASE - Green - N.W.



- 250 231. "TORNADO" VASE - MARIGOLD - NW.
- 60 232. "Butterfly" - "HORLACHER" Bon  
Bon - Amethyst
- 70 233. "Dragon & Lotus" - 9" Spat. Ftd.  
Bowl - Amethyst
- 60 234. "Fruit & Flowers" - 6" Ruff. Bowl -  
Amethyst
- 55 235. "Hearts & Vines" - 9" Bowl 3 in 1  
Edge - Green
- 850 236. "NESTING SWAN" - 10" TRI-CORN-  
ERED BOWL - MRG. - M.Brg.
- 70 237. "Little Flowers" - 10" Bowl CRE -  
Green
- 50 238. "Peacocks Tail" - Hat "General  
Furniture Co. - Green
- 50 239. "Orange Tree" - Punch Bowl (Only) -  
WHITE - Fenton
- 85 240. "Fine Cut & Roses" - Rosebowl -  
Amethyst - N.W.
- 50 241. "Fine Cut & Roses" - Rosebowl -  
Custard w/Stain (Not Irridized)
- 45 242. "Fine Cut & Roses" - Rosebowl -  
Marigold - N.W.
- 80 243. "Finecut & Roses" - Rosebowl -  
Green - N.W.
- 300 244. "Seaweed" - 10" Bowl 3 in 1 Edge -  
Marigold - M.Brg. (A Real Beauty)
- 160 245. "Persian Garden" - 7" Plate -  
WHITE - Dugan
- 50 246. "VINTAGE" - 6" RUFF. BOWL - VASELINE
- 55 247. "LEAF CHAIN" - 6" RUFF. BOWL -  
VASELINE
- 600 248. "COURTHOUSE" - 7" Lettered Bowl -  
Amethyst - M.Brg.
- 110 249. "Roccoco" - 5" Vase - Marigold
- 40 250. "Leaf Rays: - Souvenir/Fairbury  
Ill. - Nappy - Amethyst
- 150 251. "PEACOCK & URN" - 5" Ice Cream Dish -  
WHITE - N.W.
- 450 252. "PEACOCK & URN" - 5" Ice Cream  
Dish - ICE GREEN - N.W.
- 150 253. "PEACOCK & URN" - Ice Cream  
Dish - AMETHYST - N.W.
- 60 254. "PEACOCK & URN" - Ice Cream Dish -  
STAINED CUSTARD (Not Irridized)
- 130 255. "PEACOCK & URN" - Ice Cream  
Dish - Marigold - N.W.
- 75 256. "Blackberry Sprig" - 8" Ice Cream  
Bowl - Amethyst - M.Brg.
- 50 257. "Two Flowers" - 5" Ftd. Sauce -  
VASELINE
- 100 258. "Peacock & Dahlia" - 7" Ice Cream  
Shape Bowl - AQUA
- 150 259. "Nippon" - 9" Ruff. Bowl - White -NW
- 175 260. "Nippon" - 9" Bowl PCE - ICE BLUE - NW
- 350 261. "Paradise Soda" - 6" Adv. Plate - Am.✓
- 60 262. "Pony" - 9" Ruff. Bowl - Marigold
- 145 263. "KITTENS" - PLATE 4-Sides Up - Mrg.
- 285 264. "KITTENS" - PLATE 4-SIDES UP - BLUE
- 145 265. "KITTENS" - Cereal Bowl - Mrg.
- 120 266. "KITTENS" - Plate 4-Sides Up - Mrg.
- 500 267. "EMBROIDERED MUMS" - 10" Ruff. Bowl -  
ELEC. BLUE - N.W. (A REAL KNOCKOUT!!!)
- 80 268. "Cherry" - 8" Ftd. Bowl CRE - PO
- 580 269. "PEACOCK & URN" - MASTER ICE CREAM  
DISH - AM. (SUPER IRIDIZATION)
- 75 270. "Dogwood Sprays" - Dome Ftd. Bowl -  
Amethyst
- 150 271. "Holly" - 9" Plate - Beautiful Deep  
Marigold
- 450 272. "SEACOAST" - Pin Tray - Mrg. - M.Brg.
- 500 273. "SEACOAST" - Pin Tray - AM. - M.Brg.
- 70 274. "SEACOAST" - Pin Tray - Am. - M.Brg.  
(Chip on Underside)
- 450 275. "NESTING SWAN" - 9" square bowl -  
GREEN - MILLERSBURG
- 200 276. "DAISY & DRAPE" - Vase - WHITE - N.W.
- 50 277. "Butterfly" - Bon Bon - Amethyst
- 30 278. "Fine Cut & Roses" - Candy Dish -  
Marigold - N.W.
- 55 279. "Fishscale & Beads" - 6" Ruff. Plate -  
Peach Opal.
- 50 280. "Cherry Chain" - 6" Plate - Mrg.
- 125 281. "Appleblossom Twigs" - 9" Ruff. Bowl -  
Purple
- 70 282. "Cherry" (Dugan) "Jeweled Heart" Ext.  
9" Bowl - Amethyst
- 350 283. "PEACOCKS" - 9" PLATE - ELEC. BLUE -  
N.W. (Truly Beautiful)
- 160 284. "Peacocks" - 9" Bowl PCE - Mrg. - N.W.
- 275 285. "ORANGE TREE" - 9" PLATE - BLUE
- 150 286. "Three Fruits" - 9" Stippled Plate -  
Amethyst - N.W.
- 90 287. "Beaded Cable" - Rosebowl - Mrg. - NW



100 288. Beaded Cable - Rosebowl - W  
400 288A. Peacocks plate - white  
plain back

195 289. "Beaded Cable" - Rosebowl -  
Amethyst - N.W.

25 290. "Beaded Cable" - Rosebowl -  
Custard w/Stain (Not Iridized)

750 291. "HEARTS & FLOWERS" - COMPOTE -  
AQUA OPAL. - N.W.

135 292. "Hearts & Flowers" - Compote -  
Marigold - N.W.

35 293. "Orange Tree" - Mug - Blue

70 294. "Panther" - 5" Ftd. Berry - Blue

75 295. "Grape & Cable" - 6" Handgrip  
Plate - Pastel Am. - N.W.

20 296. "Water Lily & Cattails" - Tooth-  
Pick Whimsey - Marigold

500 297. "DANDELION" - MUG - GREEN - NW

100 298. "CAPTIVE ROSE" - COMPOTE - WHITE

30 299. "Open-Edge" - Hat - Marigold

200 300. "THREE FRUITS" - 9" Stippled/  
Ruff. Bowl - AQUA OPAL. - NW  
(FANTASTIC !!)

225 301. "Leaf & Little Flowers" - Compote -  
Compote - Mrg. - M.Brg. (Rare)

375 302. "GOOD LUCK" - 9" Bowl PCE --  
ELEC. BLUE - NW (Killer)

140 303. "Good Luck" - 9" Bowl PCE - Mrg. -  
Northwood (EXQUISITE)

85 304. "Captive Rose" - 9" Ruff. Bowl -  
Blue

140 305. "Grape, Imp." - 10" Ruff. Bowl -  
Purple

50 306. "Leaf & Beads" - Ftd. Candy Dish -  
Green - NW

425 307. "BLACKBERRY" - OPEN-EDGE HAT - RED

2200 308. "WILD ROSE/MEDALLION" - MID-SIZE 750  
OIL LAMP - AMETHYST - MILLERSBURG  
(SUPER RARE w/MEDALLIONS) Don't  
Miss This One A Real Beauty!!!!

90 309. "Grape & Cable" - 9" Plate -  
Amethyst - NW

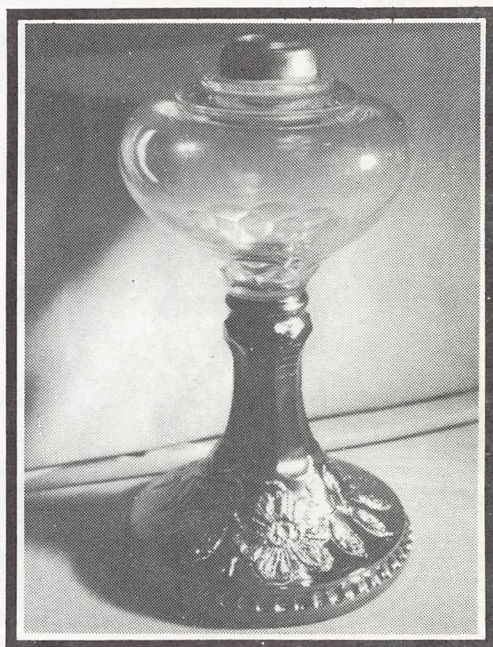
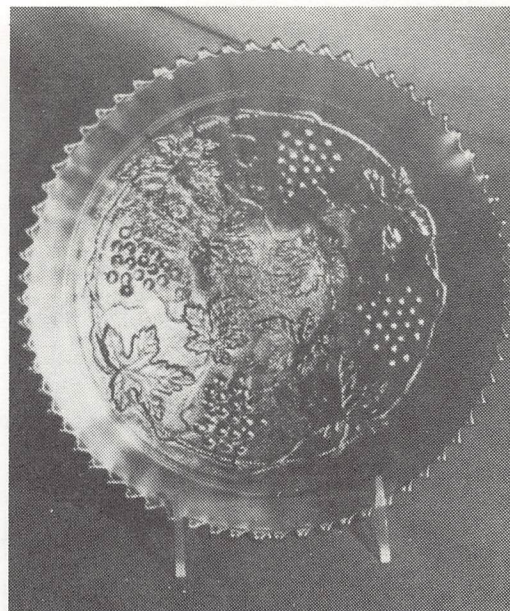
325 310. "ZIG ZAG" - 9" SQUARE BOWL --  
Marigold - M.Brg.

30 311. "Ribs" - 9" Plate - Marigold

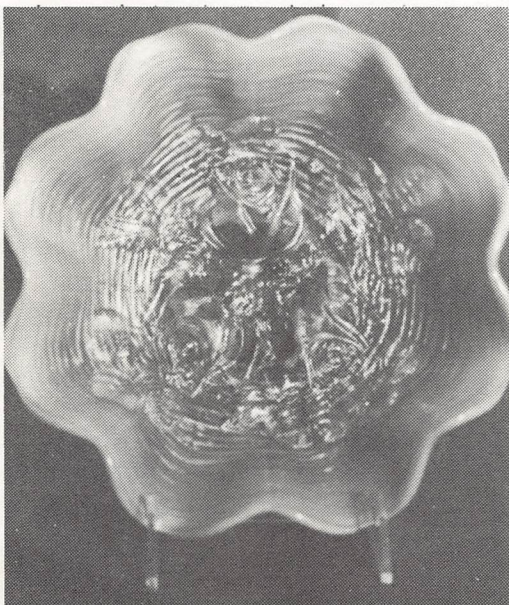
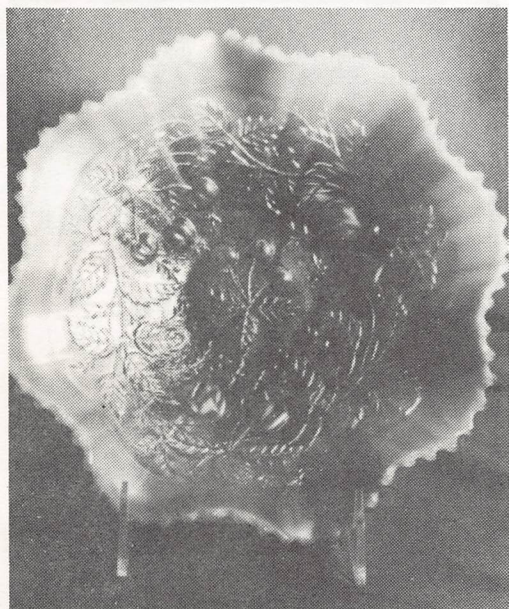
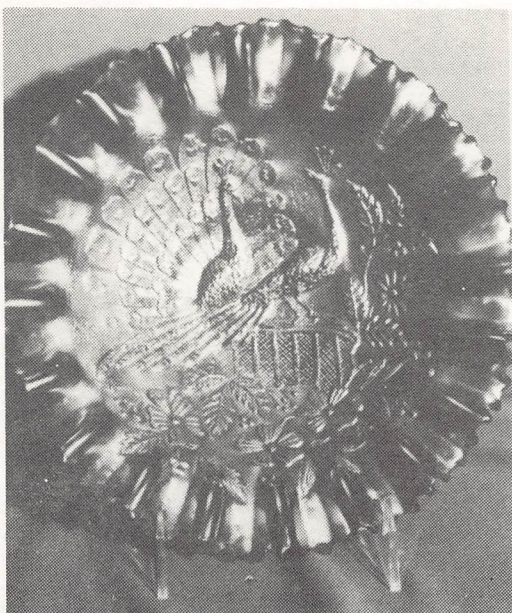
40 312. "Ribs" - 9" Plate - Smoke

1050 313. "WILD ROSE" - SMALL OIL LAMP - 750  
GREEN - M.Brg. (VERY RARE)

650 314. "RUSTIC" - 19½" FUNERAL VASE --  
BLUE (RARE & BEAUTIFUL)







- 175 315. "MORNING GLORY" - 13" MID-SIZE FUNERAL VASE - Amethyst (Burst Bubble on 1 Point)
- 110 316. "TREE TRUNK" - 14" MID-SIZE FUNERAL VASE - Marigold
- 45 317. "FLUTE" - 14" MID-SIZE FUNERAL VASE - Marigold
- 205 318. "Rosalind" - 10" Ruff. Bowl - Green - M.Brg.
- 55 319. "Blackberry Wreath" - 9" Ruff. Bowl - Marigold - M.Brg.
- 1000 320. "WILD ROSE" - SEWING OIL LAMP - MARIGOLD - M.Brg. (Also Very RARE - WHAT AN OPPORTUNITY!!) <sup>550</sup>
- 700 321. "Dragon & Strawberry" - 9" Ice Cream Shape Bowl - ELEC. BLUE - (Another Outstanding Piece)
- 200 322. "Blackberry Wreath" - 10" Ice Cream Shape Bowl - Am. - M.Brg.
- 900 323. "ROSESHOW" - 9" Ruff. Bowl - AQUA OPAL. - SUPER PASTEL w/ SPECTACULAR IRIDESCENCE) N.W.
- 80 324. "Blackberry Wreath" - 7" Ruff. Bowl - Green - M.Brg.
- 900 325. "MEDALLION" (Crystal - Not Iridized) MID-SIZE Oil LAMP (1 of 2 or 3 Known - RARE)
- 70 326. "Holly Wreath" - 7" Bowl - Amethyst - M.Brg.
- 350 327. "Swan" - Master Salt - PO
- 35 328. "Grape & Cable" - 5" Sherbet - Amethyst - N.W.
- 300 329. "BLACKBERRY" - Jack-in-the-Pulpit HAT - AQUA OPAL. (AN OUTSTANDING FENTON PIECE).
- 700 330. "ZIPPER LOOP" - SMALL OIL LAMP - Marigold (RARE)
- 35 331. "Triplets" - Hat Shape - Aqua
- 125 332. "HOLLY" - SMALL COMPOTE - CELESTE BLUE - Fenton
- 55 333. "Peacock & Urn" - Small Compote - Aqua (Roughness on Base)
- 200 334. "Maple Leaf" - 7 Pc. Water Set - Marigold
- 1300 335. "ZIPPER LOOP" - FINGER OIL LAMP - Marigold (RARE)
- 150 336. Marigold Oil Lamp (Poss. English)
- 75 337. Marigold Oil Sewing Lamp (Nice)



- 75 337A Castle Scene Halllight  
with Coralene
- 250 337B Bell Shades (S) Castle  
Scene
- 1750 338. "PEACOCKS" - 9" BOWL PCE --  
BLACK AMETHYST ? (Definitely a  
Deep Deep Fiery Purple - As  
Black as I've ever seen) N.W. -  
RARE - A REAL KNOCKOUT!!!
- 60 339. "Blossom & Band"-Pr. Auto Vases -  
Marigold
- 475 340. "FRUITS & FLOWERS" - BON BON -  
AQUA OPAL. (SUPER PASTEL w/LOTS  
OF OPAL) N.W.
- 550 341. "Fruits & Flowers" - Bon Bon -  
White - A Little Beauty - N.W.
- 140 342. "Fruits & Flowers" - Bon Bon -  
Amethyst - N.W.
- 250 343. "Fleur De Lis" - 10" Ruff. Bowl -  
Amethyst - M.Brg.
- 150 344. "Blackberry Wreath" - 10" Ice  
Cream Bowl - Green - M.Brg.
- 1050 345. "BLACKBERRY WREATH" - 10" Ice  
Cream Bowl - BLUE - M.Brg. -  
(HARD TO COME BY IN BLUE)
- 60 346. "Blackberry Wreath" - 10" Ice  
Cream Bowl - Mrg. - M.Brg.
- 65 347. "Peacock & Urn" - 9" Ruff.  
Bowl - Marigold - Fenton
- 175 348. "GOOD LUCK" - 9" RUFF. BOWL -  
ELEC. BLUE - N.W.
- 350 349. "Peacocks" - 9" Stippled Plate -  
Marigold - N.W.
- 175 350. "Fine Cut & Roses" - Candy Dish -  
ICE BLUE - N.W.
- 110 351. "Orange Tree" - Mug - AQUA
- 75 352. "Orange Tree" - Mug - SUPER VASELINE
- 1700 353. "PEACOCK AT THE FOUNTAIN" - PUNCH  
BOWL w/BASE & (4) CUPS - ICE  
BLUE - N.W. (Intact Bruise on 1  
Point - Pinhead on Another)  
EXEC. COLOR and IRIDESCENCE!!!
- 75 354. "Orange Tree" - Punch Bowl w/Base -  
Marigold - Fenton
- 90 355. "Fine Cut & Roses" - Candy Dish -  
WHITE - N.W.
- 65 356. "Strawberry" - 9" Ruff. Bowl -  
Green
- 1100 357. "MILLERSBURG, DETROIT ELKS 1910"-  
8" Bowl - Am. (A CHOICE HARD-TO-  
COME-BY PIECE)
- 80 358. "Heavy Shell" - Console Bowl -  
White - Dugan
- 85 359. "Wild Strawberry" - 7" Handgrip  
Plate - Am. - N.W.
- 325 360. "GOOD LUCK" - 9" BOWL - ELEC.  
BLUE - N.W. (Very Nice)
- 55 361. "Peackck Tail, Vt." - Compote -  
Marigold - M.Brg.
- 45 362. "DANDELION" - Tumbler - Am. - NW
- 95 363. "Open Rose" - 8" Ruff. Bowl -  
Amber - Imperial
- 450 364. "POPPY" - COMPOTE - GREEN - M.Brg.  
(Scarce)
- 55 365. "Peacock Tail" - Bon Bon - Blue
- 105 366. "Morning Glory" - 4½" Vase - Purple
- 55 367. "Heavy Iris" - Tumbler - Purple
- 750 368. "ZIG ZAG" - 9" Tri-Cornered Bowl -  
Green - M.Brg.
- 65 369. "Butterfly" - Bon Bon - Am. - N.W.
- 65 370. "Beaded Shell" - Creamer - Amethyst
- 25 371. "Cosmos & Cane" - Tumbler - Mrg.
- 450 372. "Fleur De Lis" - Dome Ftd. 9" Bowl -  
Green - Millersburg
- 400 373. "STRAWBERRY" - BON BON - RED - Fen.
- 95 374. "Inverted Coin Dot" - Water Pitcher -  
Marigold - Fen.
- 100 375. "Grape, Imp." - Goblet - Amber
- 95 376. "HANSEN, ROBT.Sgnd. - Elephant Head  
Toothpick
- 350 377. "HANSEN" Pontil Sgnd. & Numbered -  
Pig Bottle / Ashtray
- 160 378. "HANSEN, ROBT. Sgnd. - Cruet w/  
Stopper
- 90 379. "HANSEN" Pontil Sgnd. - Swan  
Master Salt - Olive Green
- 325 380. "HANSEN, ROBT. Sgnd. - Base  
Fiddle Vase
- 130 381. "Good Luck" - 9" Ruff. Bowl -  
Amethyst - N.W.
- 65 382. "Peacock & Grape" - 9" Ruff. Bowl -  
Amethyst
- 70 383. "474" - Tumbler - Green - Imp. 45
- 180 384. "BLACKBERRY" - Hat - AQUA OPAL.
- 55 385. "Double Stemmed Rose" - 9" Dome  
Based Bowl - Amethyst
- 55 386. "Coin Dot" - 9" Ruff. Bowl --  
Aqua - Westmoreland



- 30 387. "Rays & Ribbons" - 9" Ruff. Bowl - Am. - M.Brg.  
160 388. "Apple Blossoms Twigs" - 9" Ruff. Bowl - Peach Opal.  
30 389. "Rays" - 10" Bowl w/ 3 in 1 Edge - PASTEL GREEN  
40 390. "Optic & Buttons" - Rose Bowl - Marigold  
30 391. "Rays" - Bon Bon - Green  
60 392. "GRAPE & CABLE" - 7" Ice Cream Shape Bowl - AQUA  
40 393. "Acorn" - 7" Bowl - Pas. Blue  
80 394. "Double Dutch" - 9" Ftd./ Ruff. Bowl - Smoke  
25 395. "Memphis" - Punch Cup - Amethyst  
55 396. "Acorn Burrs" - Tumbler - Am.  
50 397. "Dandelion" - Tumbler - Am.  
190 398. "Morning Glory" - 6½" Vase - Amethyst  
65 399. "Diving Dolphins" - 6" Fan Vase (Glow's Tangerine)  
45 400. "Coin Dot" - 9" Bowl 3 in 1 Edge - Am. - Fen.  
50 401. "Violet Basket" - Smoke - Imp.  
30 402. "Blackberry" - Hat - Cobalt  
40 403. "Melon Shaped" - Giant Rosebowl - Marigold  
60 404. "HANSEN" Pontil Sgnd. - Town Pump - Green  
80 405. "Sailboats" - Wine - Stained Custard (Not Iridized)  
35 406. "Grape Arbor" - Hat - Stained Custard (Not Iridized)  
45 407. "Nautilus" - 5" Decorated Berry (Not Iridized) Sgnd. "Northwood" in Script  
15 408. "Prayer Rug" - Creamer - Custard (Not Iridized)  
35 409. "Bottoms Up" - Novelty Custard Shot Glass (Not Irid.)  
425 410. "BUTTERFLY & TULIP" - Ftd. Fruit Bowl - Marigold  
50 411. "Scales & Beads" - 7" Ruff. Plate - Marigold  
100 412. "Fine Cut & Roses" - Rosebowl - Amethyst - N.W.  
45 412A Grape & Cable Punchcups Blue (2.)
- 105 413. "Bushel Basket" Round - Blue - NW  
60 414. "Wreath of Roses" - Compote - Blue  
45 416. "SHRINERS" - Cup & Saucer - 1908 Los Angeles  
70 417A. "SHRINERS" - 1909 Tobacco Leaf Champagne (CHOICE OUT)  
70 417B. "SHRINERS" (Same as Above)  
70 418. "SHRINERS" - 1911 Champagne  
20 419. "Triplets" - Hat - Amethyst  
130 420. Carnival Glass Beaded Evening Bag  
35 421. "Holly" - Min. Compote - Blue  
80 422. "Diamond Points" - 10" Vase - Purple - N.W.  
60 423. "Three Fruits" - 9" Ruff. Bowl - Amethyst - N.W.  
70 424. "HANSEN, ROBT" Sgnd. - Red Rosebowl  
300 425. "HANSEN" Pontil Sgnd. - Cat Bottle  
200 426. "HANSEN" Sgnd. Daisy & Button Red Canoe  
50 427. "HANSEN" Pontil Sgnd. - Red Bird Salt-Dip  
30 428. "Shell" - 8" Ruff. Bowl - Mrg.  
40 429. "Iris" - Compote - Marigold  
60 430. "Ribbon Tie" - 9" Ruff. 3 in 1 Edge Bowl - Amethyst  
25 431. "Basketweave" - 7" Ruff. Bowl - Amethyst - N.W.  
40 432. "Iris" - Compote - Amethyst  
200 433. "Heavy Iris" - Pitcher w/ 1 Tumbler - Mrg. (Sunken Bubble Inside Pit. Lip)  
15 434. "Wide Panel" - Bell Shade - Mrg. On Milk Glass - N.W.  
200 435. "ROSE SHOW" - 9" Ruff. Bowl - AQUA OPAL. - N.W. (A Real Beauty but has Interior Crack in Base)  
30 436. "Beauty" - Bud Vase - Marigold  
10 437. (2) Flower Frogs - 1 Celeste - 1 Mrg.  
45 438. "Memphis"-Punch Base Only - White  
230 439. "GRAPE & CABLE" - Pr. Candlesticks - PURPLE - N.W.  
40 440. "Beads" - 7" Ruff. Bowl - Green - NW  
30 441. "Holly" - 10" Ruff. Bowl - Mrg.  
25 442. "Coin Dot" - 9" Bowl 3 in 1 Edge - Marigold  
55 442A. Carnival Glass Purse



- 25 443. "Grape & Cable" - 5" Flat Berry - Amethyst - N.W. 10 472. "Orange Tree" - Loving Cup - Mrg. (Chip on Base) and "Grape & Gothic Arches" - Tumbler - Blue (nicks on Rim) - Both On
- 20 444. "270" - Compote - Am. Westmoreland 30 473. "Orange Tree" - Shaving Mug - Blue
- 95 445. "THREE FRUITS" - 9" Spat. Ftd. Bowl - AQUA OPAL. - N.W. (Super Color but Missing One Point) 25 474. "Traceful" - Vase - Mrg. - N.W.
- 30 446. "Thistle & Thorn" - Ftd. Nut Dish - Marigold - Eng. 50 475. Stretch Glass - Vaseline Ring Dish
- 25 447. "Rustic" - 9" Vase - Marigold 35 476. "Crackle" - Pr. Candlesticks - Mrg.
- 15 448. "Diamond & Rib" - 9" Vase - Mrg. 15 477. "Diamond Point Columns" 10" Vase - Mrg.
- 35 449. "Rustic" - 9" Vase - Blue 55 478. "HANSEN" Pontil Sgnd. - Rabbit Toothpick - Amethyst
- 30 450. "Long Thumbprint" - 9" Vase - Gr. 25 479. "HANSEN" Pontil Sgnd. - "Flute" Toothpick - Amethyst
- 40 451. "Lustre Flute" - Hat - Am. - N.W. 45 480. "HANSEN" Pontil Sgnd. - Red Tree Trunk Toothpick
- 50 452. "Peacock at the Fountain" - Cov. Butter - Am. (Chip on Base) 30 481. "HANSEN" Pontil Sgnd. - Blue "Vermont" Toothpick
- 50 453. "PEACHES" - Cov. Butter - White - (Mold Roughness on Base) 45 482. HANSEN" Pontil Sgnd. - Pressed Glass Cruet (Crack in Bottom)
- 45 454. "Orange Tree" - Mug - Pastel Blue w/Mrg. Irid. 15 483. "Holly" - Sm. Compote - Mrg.
- 50 455. "Blackberry" - Min. Compote - Blue 25 484. "Diamond Ribs" - 10" Vase - Am.
- 35 456. "Holly" - Min. Compote - Blue 45 485. "Peacock Tail" - 7" Bowl - Green
- 20 457. "Peacock Tail, Vt." - Compote - Marigold - Millersburg 25 486. "Beauty" - Bud Vase - Mrg.
- 45 458. "HOLLY" - Jack-in-the-Pulpit Hat - Red (Cracked) Nice Red 10 487. (2) ACGA 1968 "God & Home" Mugs
- 80 459. "DANDELION" - MUG + PURPLE - N.W. 35 488. (2) ACGA 1967 "Red Robin" Mugs
- 25 460. "Dragon & Lotus" - 9" Ruff. Bowl - Marigold 17.50 489. (2) ACGA 1969 "God & Home" Mugs
- 40 461. "Cosmos" - 10" Ruff. Bowl - Am. 15 490. (2) ACGA 1968 "God & Home" Mugs
- 60 462. "Strawberry" - 9" Ruff. Bowl - Amethyst 15 491. 1970 "In God We Trust" ICGA Spooner
- 45 463. "Vintage" - Rosebowl - Mrg. 50 492. "Elks" 1971 Plate "St Claire" Lmted Ed.
- 35 464. "Long Hobstar" - Fruit Bowl - Mrg. 85 493. "Morning Glory" - 5" Vase - Smoke
- 15 465. "Coin Dot" - 10" Ruff. Bowl - Mrg. 35 494. "File" - Spooner - Marigold
- 45 466. "Pansy" - Oval Relish - Mrg. - Old 45 495. "Butterfly & Berry" - Spooner - Mrg.
- 25 467. (8) Flute Goblets - Mrg. (All On) 25 496. "Blackberry" - Open-Edge Hat - Mrg.
- 20 468. "Grape, Imp." - 7" Bowl - Green 12.50 497. "Stippled Rays" - Cr. & Sugar - Mrg.
- 55 469. "Pony" - 8" Ruff. Bowl - Mrg. 80 498. "Birds w/Grapes" - Wallpocket - Mrg.
- 35 470. "Peacock & Dahlia" - 6" Bowl - Marigold 25 499. "Beaded Shell" - Creamer - Mrg.
- 30 471. "Wreath of Roses" - Rosebowl - Mrg. 65 500. "Butterfly & Berry" - Spooner - Blue
- 175 501. (16) "St. Claire" - "I.G." & Other Newer Iridized Toothpicks (Choice Out - High Bidder Takes As Many As As Desired 1 to 16 )

"THANK YOU ONE AND ALL FOR YOUR PARTICIPATION IN OUR 1ST CARNIVAL GLASS AUCTION"



3. Every effort will be made to call any damage on glass. After you have made a purchase you will have 15 minutes to inspect said item - NO glass will be returned or turned back in after this time period. NOTE: ANY GLASS THAT IS RETURNED (FOR ANY REASON) WILL NOT BE PUT BACK ON THE AUCTION BLOCK TODAY. All glass being returned must be inspected by Buck Walraven and you will be asked for what reason it is being returned. STRAW MARKS and MANUFACTURERS FLAWS are not considered damage.

4. In the event of a tie bid the Auctioneer's word shall be final on whether the bid shall be reopened. If any dispute arises after the sale; our sale record is conclusive. THIS SALE IS BEING TAPED.

5. All sales final. Any announcements made during sale take precedence over printed matter. You must inspect the glass yourself or buy without inspection strictly at your own risk.

6. Having been read these rules of this sale, if for any reason you cannot or will not comply -- DO NOT BID. You are welcome to stay and observe however we must insist on strict compliance in every matter. Our aim is to run a fair and orderly sale for both the sellers and buyers. If you have any questions during the sale - feel free to stop us at anytime. ANY QUESTIONS???

IF YOU HAVE ITEMS YOU WOULD LIKE TO CONSIGN  
TO ONE OF OUR QUALITY AUCTIONS - PLEASE GIVE US A CALL!!!

#### UPCOMING AUCTIONS

APRIL 16th - "SHERATON INN" - FLINT, MI - ART GLASS - LAMPS - CAMEO - QUALITY ANTIQUES

MAY 13th - "HOLIDAY INN" - I-75 & M-46 - SAGINAW, MI - ALL CARNIVAL GLASS AUCTION PRIVATE COLLECTION

#### PERSONAL NOTES





*When It Comes to Glass  
We Use A Touch Of Class*

GARY COOPER, Auctioneer  
202 SOUTH MILL STREET  
CLIO, MICHIGAN 48420

**FIRST CLASS**

