

Patricia Shiel  
832 N. 8th St  
Blue River Falls WI 54615  
10

# CARNIVAL GLASS AUCTION



**WOODY**  
**AUCTION**



**Fri. & Sat., March 3 & 4, 1989**  
**Harley Hotel — ST. LOUIS, MISSOURI**



# CARNIVAL GLASS AUCTION

**Friday, March 3, 1989 - 6:00 p.m.**

**Saturday, March 4, 1989 - 9:30 a.m.**

Harley Hotel — I-70 at Earth City Exit  
(just across the Missouri River from St. Charles)  
**ST. LOUIS, MISSOURI**

**Mr. and Mrs. John Britt, owners**

How does one describe one of the best Carnival Glass collections ever offered at auction by two of the foremost authorities and best-known "Carnival" people, John and Lucile Britt? Should we say it is one of the most fantastic collections offered in recent years? **YES!** Should we say it is probably one of the most important events for Carnival collectors this year? **YES!**

John and Lucile have devoted many years to the study and collecting of Carnival Glass and are considered two of the outstanding authorities in the field. They have attended virtually every convention and most other Carnival Glass happenings which have taken place in the past 15 years. They are continually writing informative articles for Carnival Glass club newsletters over the U.S.A., Canada and Australia. Their lectures and presentations at conventions are always well attended. If there is anything you need to know about Carnival Glass, John and Lucile are always ready to help you. They answer hundreds of letters and phone calls about Carnival Glass. While they don't admit having all the answers, they do their best to help you with your questions.

It is indeed a privilege for the Woody Auction Company to present at auction approximately 850 items from the Britt collection - the "creme de la creme" of the Carnival Glass they have had the opportunity to purchase.

As you go through the catalog you will find many superlatives and perhaps feel that they are overused. Once you see the glass, you will realize that, if there was an error in the use of adjectives, it was in understatement!!

John and Lucile want everyone to know that they are by no means quitting collecting. They plan to continue to search for Carnival Glass to add to their collection and also will continue with their research, seminars and writing articles.

**PREVIEW:** Friday, 12 noon.

**MOTEL RESERVATIONS:** May be made by calling the Harley directly at 314-291-6800. Their toll-free number for reservations is 1-800-321-2323.

**WRITE-IN BIDS:** Accepted with a 25% deposit. **Please note** - there is a 5% handling charge which will be added to the selling price of all write-in bids. This is in addition to the cost of postage and insurance. Your write-in bid will be entered just as if you are present and bidding. It is possible that you might purchase an item for less than your bid. If your bid is successful, you will be notified and the item will be sent just as soon as the balance due is received. If your bid is not successful, your check will be returned to you along with a statement of the selling price.

**Auctioneer:**  
**JOHN M. WOODY**  
Douglass, KS  
316-746-2694 or 746-2036

**Associate Auctioneer:**  
**SCOTT BROWN**  
Mullinville, KS  
316-548-2681





- 45  
50  
15  
125  
20  
45  
130
1. Beaded Panels compote - p.o.
  2. Dugan Cherries sauce - purple
  3. Scroll embossed compote - marigold
  4. Apple Blossom 6" bowl - marigold
  5. Imperial Grape goblet - marigold
  6. Imperial Grape goblet - purple
  7. "N" Feathers 7" vase - i.b., super iridescence and color, beautiful, quite rare
  - 60 8. Rustic 7" vase - white, (Hobnails), rare size (they are usually slung out)
  - 80 9. "N" Thin Rib 11" vase - sapphire blue, rare color and a beauty
  - 75 10. Thin Rib 10" vase - ice blue
  - 100 11. "N" Fine Ribs 11½" vase - ice green, very scarce
  - 140 12. Good Luck bowl - cobalt blue, ruffled, nice
  - 40 13. Stretch Panelled compote - vaseline, 6½" tall, super color and iridescence
  - 65 14. Single Flowers, C.R.E. bowl, enamelled flowers - peach opal
  - 55 15. Double Star tumbler - green, very nice color and iridescence
  - 50 16. File tumbler - marigold, very good example, seldom seen
  - 40 17. Lustre & Clear tumbler - marigold, Owen #116, hard to find - 50
  - 75 18. Windmill tumbler - purple, fantastic color and iridescence, a beauty
  - 50 19. Lacy Dewdrop tumbler - m/mg, Crider iridized and signed, super iridescence
  - 130 20. Ten Mums tumbler - white, rare - 125
  - 50 21. Robin tumbler - marigold, very nice one
  - 40 22. Birds & Cherries compote - green
  - 150 23. Heavy Grape 8" plate - amber
  - 155 24. Nautilus creamer - purple, one end turned up, very nice color and iridescence
  - 50 25. Millersburg Holly Sprig card tray - green \*
  - 300 26. Good Luck bowl, P.C.E. - green, fantastic color and iridescence
  - 160 27. Good Luck bowl, P.C.E. - marigold, stippled, super color and iridescence
  - 200 28. Good Luck bowl, P.C.E. - purple, very good color and iridescence
  - 225 29. Good Luck bowl, P.C.E. - blue, desirable and nice
  - 325 30. Hattie Rose bowl - amber, extremely rare in this color, a beauty
  - 340 31. Rose Show plate - vaseline, extremely rare, fantastic color and iridescence, gorgeous
  - 250 32. Acorns bowl - moonstone/dark peach overlay, rare beauty
  - 150 33. Acorns bowl - ice blue, very rare color
  - 160 34. Acorns bowl, dk. ice blue, another rare color
  - 400 35. Acorns bowl - red, very nice
  - 30 36. Acorns bowl - marigold
  - 120 37. Acorns bowl - amber/opal edge, very rare, don't overlook this unusual one
  - 60 38. Acorns bowl - amber, real nice
  - 60 39. Acorns bowl - aqua, very nice color
  - 170 40. Acorns bowl - moonstone/light marigold iridescence, very rare, only one we have seen
  - 100 41. Acorns bowl - deep purple, hard-to-find color

- 70  
90  
60  
90  
150  
55  
160  
160  
90  
250  
450  
100  
45  
45  
30  
125  
60  
120  
45  
80  
900  
550  
1100  
1150  
800  
1300  
850  
325  
175  
170  
90  
60  
70  
40  
40  
220  
35  
65
42. Acorns bowl - cobalt blue
  43. Acorns bowl - bluish-amethyst, hard color to call, very pretty
  44. Acorns bowl - green
  45. Acorns bowl, I.C.S. - vaseline, very nice color and iridescence
  46. Horses' Heads ruffled bowl - green, super color and iridescence, a beauty
  47. Horses' Heads nut bowl - marigold, very nice
  48. Round Up low ruffled bowl - peach opal, super color and iridescence
  49. Round Up low ruffled bowl - amyt, outstanding color and iridescence
  50. Fanciful low ruffled bowl - frosty white, excellent iridescence
  51. Boggy Bayou vase - lime green opal, very rare, super piece
  52. Good Luck plate, Basketweave exterior - purple, very nice color and iridescence
  53. Coindot rosebowl, small size - green, rare in this size, a beauty
  54. Coindot rosebowl, large size - green
  55. Coindot rosebowl, large size - amethyst
  56. Morning Glory vase, Jack in Pulpit - dark marigold
  57. Morning Glory vase - purple, miniature size, great color and iridescence
  58. Morning Glory vase - green, miniature
  59. Four Pillars vase - aqua opal
  60. "N" Tree Trunk vase - green, Rayed Star under base
  61. "N" Fine Rib vase - white
  62. "N" Peacock on Fence bowl - aqua opal, pastel, lots of opal, fantastic
  63. "N" Peacock on Fence bowl - electric blue, gorgeous
  64. "N" Peacock on Fence bowl - ice green, super nice, great iridescence
  65. "N" Peacock on Fence bowl - green, choice, rare color
  66. "N" Peacock on Fence bowl, stippled - green, very rare
  67. "N" Peacock on Fence bowl - aqua, rare, beautiful
  68. "N" Peacock on Fence bowl - frosty white, super iridescence and color
  69. "N" Peacock on Fence bowl - purple
  70. "N" Peacock on Fence bowl - dark marigold, a beauty
  71. "N" Peacock on Fence bowl - marigold, stippled
  72. Greek Key tumbler - green, very nice
  73. Greek Key tumbler - purple, nice example
  74. Fluffy Bird Peacock tumblers (2) - amethyst, beautiful color and iridescence
  75. Fluffy Bird Peacock tumbler - marigold, super color and iridescence
  76. God & Home tumbler - blue, beautiful, getting hard to find
  77. Maple Leaf tumbler - purple, outstanding color and iridescence
  78. Maple Leaf tumbler - custard, not iridized, green and gold decor, a beauty

18067.50



- 70 79. G/C stippled tumbler - purple, rare with stippling, see Owens #202
- 50 80. Heavy Iris tumbler - purple, very nice
- 1400 81. **Corn vase - ice blue, rare**, very desirable
- 800 82. **Corn vase - marigold, rare**, good dk. color, a beauty - 500
- 500 83. **Corn vase - green, gorgeous**
- 300 84. **Corn vase - ice green**, sort of unusual yellow-green, super - 400
- 600 85. **Corn vase - purple**, super iridescence, great color
- 950 86. **Corn vase - aqua opal**, extremely rare, but has damage near base
- 400 87. **"N" Bushel 8-sided basket - amethyst**, rare example, handle smooth at base, not the usual handle - 500
- 120 88. **"N" round Bushel basket - cobalt blue**, nice
- 175 89. Millersburg Mystery Peacock bowl - marigold, 3-in-1 edge, very nice
- 200 90. Millersburg Nesting Swan bowl - amyt, super color and iridescence
- 160 91. Millersburg Nesting Swan bowl - marigold, nice
- 30 92. Acorn Burrs punch cup - green, super color and iridescence
- 70 93. Acorn Burrs punch cup - white, great color and iridescence
- 80 94. **Acorn Burrs punch cup - blue**, extremely rare, don't overlook this one, a beauty
- 55 95. Acorn Burrs punch cup - purple, great color and iridescence
- 90 96. Acorn Burrs punch cup - ice green, rare, very nice
- 120 97. Acorn Burrs punch cup - ice blue, rare, a beauty
- 70 98. Peacock at Fountain punch cup - electric blue, beautiful
- 80 99. **Peacock at Fountain punch cup - lavender**, very rare, super color and iridescence
- 100 100. Vintage 7 1/2" plate - blue, super color and iridescence
- 120 101. Vintage 6" plate - green, scarce size, very good color and iridescence
- 70 102. Vintage 6" plate - amethyst, scarce, very nice
- 40 103. Flowers & Beads plate - amethyst
- 400 104. **Grapevine Lattice tankard pitcher - frosty white**, hard-to-find color, very nice irid.
- 375 105. **Blossomtime compote - green**, rare in this color, a beauty
- 175 106. Blossomtime compote - purple, a nice one
- 625 107. **Drapery rosebowl - ice blue**, very rare color
- 250 108. Drapery rosebowl - electric blue, gorgeous
- 190 109. Drapery rosebowl - marigold, rare in this color, super iridescence
- 200 110. Drapery rosebowl - aqua opal, lots of opal, pastel
- 225 111. Drapery rosebowl - aqua opal, butterscotch iridescence
- 300 112. Drapery rosebowl - amethyst, very nice
- 140 113. Knotted Beads vase - lime green, glows under black light
- 35 114. Cornith vase - aqua teal, very desirable color

- 130 115. **Two Fruits bon bon - green**, square, scarce color and shape
- 60 116. Two Fruits bon bon - marigold, round, very nice color and iridescence
- 250 117. **Octagon wine decanter - purple, extremely rare color**
- 90 118. Octagon wine decanter - marigold
- 60 119. Orange Tree goblet-shape compote - blue, rare piece *Persian Medallion - blue choppots*
- 350 120. **NuArt Homestead plate - marigold**, scarce color, nice iridescence
- 225 121. Persian Garden master I.C. bowl - white with lavender tint, a beauty!
- 50 122. Persian Garden small I.C. bowl - frosty white, very nice
- 80 123. Imperial Heavy Grape master berry bowl - dark pastel blue, unusual color
- 1250 124. **Coindot bowl - super red!** fantastic color and iridescence, a beauty
- 1200 125. **Rose Show Varient plate - blue with fabulous green iridescence, rare and beautiful!!!**
- 100 126. **Lattice Heart plate - amethyst**, rare in a plate
- 410 127. Peacock & Dahlia 7" bowl - aqua, scarce color, very nice
- 1000 128. **Hearts & Flowers bowl - aqua opal** with opal tips, very rare, super piece
- 700 129. **Hearts & Flowers bowl - ice green**, tough color to find, super nice color and iridescence
- 650 130. **Hearts & Flowers bowl - green**, hard to find in this color
- 225 131. Hearts & Flowers bowl - frosty white, super
- 650 132. Hearts & Flowers bowl - electric blue, electric blue iridescence
- 350 133. Hearts & Flowers bowl - purple with electric blue iridescence, beautiful
- 300 134. Hearts & Flowers bowl - ice blue, fabulous iridescence, super
- 175 135. Hearts & Flowers bowl - marigold
- 125 136. **Two Flowers rosebowl**, small size - **purple**, looks red when held to light, fantastic color and iridescence
- 150 137. **Two Flowers rosebowl**, large size - **marigold**, rare in rosebowl
- 800 138. **Two Flowers spatula-footed bowl - red!** very fine example, nice iridescence
- 225 139. **Two Flowers 10" ftd. bowl - lime green**, rare color, glows under light, a beauty
- 40 140. Two Flowers sauce - marigold, unusual yellowish color, scarce
- 120 141. Star Medallion vase - smoke, rare in this color
- 90 142. Question Mark compote - peach opal, crimped edge, a beauty
- 180 143. Captive Rose plate - blue
- 1200 144. **Rose Show bowl - ice lime green, super color and iridescence, beautiful! rare!**
- 400 145. **Millersburg Many Stars, C.R.E. bowl - green**, a beauty and hard to find
- 400 146. **"N" Tree Trunk 10 1/2" vase - aqua opal**, seldom seen, a beauty
- 140 147. **"N" Tree Trunk 10 1/2" vase - ice blue**, this group is the small-size vases
- 85 148. **"N" Tree Trunk 10 1/2" vase - blue**, choice color

39, 592.50



- 40 149. "N" Tree Trunk 10" vase - frosty white, very nice iridescence  
50 150. "N" Tree Trunk 9 3/4" vase - green with gold irid.  
225 151. "N" Tree Trunk squatty 7" vase - ice blue, outstanding  
250 152. "N" Tree Trunk squatty 6 1/2" vase - ice green, very nice  
150 153. "N" Tree Trunk squatty 7 3/4" vase - electric blue, fantastic  
100 154. "N" Tree Trunk squatty 7 3/4" vase - frosty white, very nice  
250 155. "N" Tree Trunk squatty 6 3/4" vase - green  
40 156. Star & File rosebowl - marigold, a nice one  
10 157. Star & File wines (2) - marigold, hard to come by, choice  
10 158. Star & File sherbet - marigold  
20 159. Star & File champagne - marigold  
40 160. Leaf Rays nappy - white, very nice color and iridescence  
800 161. **Fenton's Vintage bowl - very rare Persian blue**, super color and iridescence  
400 162. **Peacock & Grape, C.R.E. bowl - lime green opal**, fantastic color and irid., gorgeous  
75 163. Circle Scroll 7 1/2" vase - marigold, rare, whimsy made from tumbler  
60 164. Circle Scroll 8 3/4" vase - purple, very scarce, super color and iridescence  
40 165. Pulled Loops vase - purple, unusual opalescence at top  
80 166. Imperial #5 (Banded Fleur-de-Lys) vase - dark marigold, super color and iridescence  
575 167. Lotus & Grape plate - blue, very nice  
225 168. Peacock & Grape plate - marigold, a good one  
325 169. Fenton Peacock & Urn plate - blue  
500 170. **Poinsettia & Lattice footed bowl - blue**, electric blue iridescence, a beauty  
90 171. Windmill & Mums large footed bowl (Chrysanthemum) - dark marigold  
225 172. Victorian bowl - purple  
120 173. **File & Fan compote - m/mg**, super color and iridescence, rarely seen  
250 174. **File & Fan compote - blue opal**, a beauty, rare and desirable  
100 175. File & Fan compote - peach opal, very nice  
200 176. Daisy Block row boat - amber, rare color, nice  
30 177. Dagenhart wines (2) - amberina and blue, scarce, signed with a "D" inside a heart  
425 178. **Fenton's Flowers rosebowl - vaseline**, very nice, rare in this color  
125 179. Fenton's Flowers rosebowl - green, scarce  
80 180. Fenton's Flowers rosebowl - amethyst, scarce  
300 181. "N" Flute 5-pc. nut or salt set - **vaseline**, see in Don Moore's Rarities Book under Vaseline, beautiful and rare  
60 182. Woodpecker wall vases - marigold, pair, super color and iridescence  
550 183. **Three Fruits footed bowl - aqua opal**, one of the finest we have seen  
1100 184. **Three Fruits footed bowl - ice green**, rare color, super color and iridescence  
325 185. **Three Fruits footed bowl - frosty white**, hard to find, super  
250 186. **Fantail 10 1/4" low ruffled bowl - electric blue**, super iridescence and color, a beauty  
1150 187. **Dahlia 4-pc. table set - frosty white**, good gold, nice iridescence, very nice set  
575 188. **Singing Birds mug, very rare stippled - unusual shade of blue**, a beauty  
500 189. **Singing Birds mug - frosty white**, a very nice one, rarely seen  
400 190. **Singing Birds mug - lavender base glass**, rare color  
40 191. Singing Birds mug - dark marigold, very nice  
30 192. Singing Birds mug - unusual marigold, seldom seen in this shade  
150 193. Singing Birds mug - blue opal, not iridized, good opal  
40 194. Singing Birds mug, stippled bottle green, not iridized  
150 195. Singing Birds mug - custard, not iridized, good nutmeg  
20 196. Imperial Flute goblet - very dark marigold, very nice one  
150 197. "N" Poppy relish dish - green, super color and iridescence  
30 198. Memphis punch cup - marigold  
60 199. Memphis punch cup - white - 60  
60 200. **Memphis punch cup - ice green**, rare color  
55 201. **Memphis punch cup - lime green**, rare, very nice  
25 202. Memphis punch cup - purple, outstanding color and iridescence  
90 203. **Memphis punch cup - ice blue**, dark, very nice color and iridescence  
75 204. **Memphis punch cup - ice blue**, lighter, very good iridescence  
280 205. Inverted Feather cracker jar - green, very good color and iridescence  
90 206. Star & File tumbler - marigold, scarce  
40 207. Singing Bird tumbler - dark marigold, nice  
250 208. Pastel Panels tumblers (3) - celeste blue, Owens #189  
35 209. Blueberry tumbler - marigold  
75 210. Blocked Panels tumbler - marigold, Owens #216, very scarce - 250  
250 211. Star Medallion tumblers (2) - dk. marigold, Owens #159 - 35  
175 212. **Ragged Robin, C.R.E. bowl - blue**, very scarce Fenton pattern  
110 213. Millersburg Fleur-de-Lys, I.C.S. 10" bowl - marigold  
1000 214. **Vintage ruffled bowl - aqua opal**, very rare, super piece, a beauty  
75 215. Blackberry open-edge basket - amethyst, round  
110 216. Fenton open-edge basket - amethyst, small, round  
110 217. Imperial Robin pitcher - dark marigold, very nice iridescence, getting harder to find  
130 218. Imperial Art Glass-type (not stretch) rosebowl - purple, Old Imperial mark, a beauty  
100 219. Fenton Beaded Stars rosebowl - marigold, very nice

54,022.50



- 150 220. "N" Fruits & Flowers 7½" plate - amethyst  
100 221. Cherry Chain 6" plate - blue, very nice  
375 222. **Sailboat goblet 7" tall - green, extremely rare, only 4 reported, very good detail, beautiful**  
550 223. **Zippered Heart 5½" vase - marigold, extremely rare, only one reported, great piece**  
450 224. **Fruits & Flowers bon bon - ice green, very rare, nice color and iridescence**  
475 225. **Fruits & Flowers bon bon - ice blue, gorgeous, super color and iridescence**  
130 226. Fruits & Flowers bon bon - electric blue, a beauty  
650 227. **Fruits & Flowers bon bon - lavender, very rare, fantastic color and iridescence**  
375 228. **Fruits & Flowers bon bon - amber, extremely rare color**  
125 229. Fruits & Flowers bon bon - green, super iridescence, lots of butterscotch  
350 230. Fruits & Flowers bon bon - aqua opal, pastel, beautiful  
325 231. Fruits & Flowers bon bon - aqua opal, butterscotch, great color and iridescence  
75 232. Fruits & Flowers bon bon - dark marigold, super color and iridescence  
60 233. Fruits & Flowers bon bon - green, no butterscotch  
300 234. **Fruits & Flowers bon bon - frosty white, rare, very nice**  
175 235. **Fruits & Flowers bon bon - stippled electric blue, super color and iridescence, gorgeous**  
50 236. Fruits & Flowers bon bon - marigold, stippled background  
475 237. **Millersburg Strawberry tri-cornered bowl - amyt, super color and iridescence, very rare shape**  
400 ~~238~~ 238. **Millersburg Strawberry square bowl - amethyst, hard-to-find shape, a nice one**  
50 239. Pond Lily bon bon - white, nice iridescence, very good piece  
60 240. Pond Lily bon bon - blue, nice, great color and iridescence  
50 241. Pond Lily bon bon - white, card tray-shape, very nice color and iridescence  
350 242. **Dugan Formal vase, Jack in Pulpit - marigold, rare and desirable**  
425 243. **Dugan Formal vase, rolled-in top - purple, rare \***  
210 244. **Nippon bowl, P.C.E. - pastel lime green with opal tips, very rare and beautiful**  
160 245. Nippon bowl, P.C.E. - white, super color and iridescence  
325 246. Nippon bowl, P.C.E. - purple, fantastic  
250 ~~200~~ 247. **Nippon bowl, P.C.E. - ice blue, great iridescence**  
300 ~~248~~ 248. **Nippon bowl, P.C.E., Basketweave exterior - ice blue, a beauty**  
225 249. **"N" Leaf Columns vase - ice blue**  
350 250. **"N" Leaf Columns vase - teal blue**  
250 251. **"N" Leaf Columns vase - ice green**  
180 252. Millersburg Hobnail rosebowl - marigold, very scarce  
200 253. Greek Key bowl, P.C.E. - green, nice example, scarce shape

- 25 254. Stork & Rushes punch cup - amethyst  
10 255. Stork & Rushes punch cup - marigold  
15 256. Orange Tree punch cup - marigold  
25 257. Many Fruits punch cup - amethyst  
60 258. Many Fruits punch cup - blue, very rare in this color  
30 259. Broken Arches punch cup - purple  
700 260. **Dugan Pony bowl, 10 ruffles - light green, super rare piece, beautiful, glows under black light**  
125 261. Dugan Pony bowl - marigold, 10 ruffles, very scarce in this shape  
50 262. Dugan Pony bowl - marigold, has six ruffles  
1400 263. **Holly ruffled bowl - blue opal, extremely rare, beautiful, exquisite piece**  
800 264. **Holly ruffled bowl - moonstone, fantastic color and iridescence, very rare, a beauty**  
1250 265. **Holly ruffled bowl - super red, absolutely gorgeous, one of the best**  
175 266. **Holly ruffled bowl - vaseline, rare color, glows under light**  
100 267. Holly ruffled bowl - white, very nice iridescence  
175 268. **Concave Diamonds tumbler with coaster - vaseline, super rare and beautiful**  
10 269. Concave Diamonds tumbler - celeste blue, great color and iridescence, Owens #218  
90 270. Marilyn tumbler - amethyst, super iridescence and color  
60 271. Stork & Rushes/Lattice Band tumbler - blue, a beauty, Owens #162 - 75-80  
100 272. Oriental Poppy tumbler - ice blue, tough to find  
40 273. Oriental Poppy tumbler - purple, 4½" high, nice  
40 274. Oriental Poppy tumbler - amethyst, 4¾" high, great color  
210 275. **Blackberry Block tumbler - green, fabulous color and iridescence, rare in green, one of the best**  
60 276. **Blackberry Block tumbler - amethyst, beautiful, as good as they come**  
50 277. Blackberry Block tumbler - marigold, super color and iridescence  
50 278. Golden Grapes rosebowl - marigold, very nice  
180 279. **Louisa rosebowl - amber, very nice, a rare color in this pattern, a beauty**  
45 280. Pineapple rosebowl - marigold, very nice  
275 281. **Robin mug - dark smoke, all the way to the top, extremely rare, only one we have seen**  
90 282. **Robin mug - smokey green, rare, green base with smoke iridescence**  
55 283. Robin mug - green base glass with marigold iridescence  
35 284. Robin mug - dark marigold  
30 285. Robin mug - light marigold, unusual color  
100 286. **Robin mug - dark marigold, very rare with smooth background, no stippling, fantastic color and iridescence**  
140 287. Pastel Swan "N" or Dugan - ice green  
80 288. Pastel Swan, Fenton - ice green

73567.50



- 160  
~~170~~ 289. Double Loop open sugar or chalice - aqua opal, very rare color \*
- 40 290. Double Loop open sugar or chalice - purple, super iridescence, hard to find in purple
- 60 291. Double Loop open sugar or chalice - marigold, very scarce in this color, a nice one
- 50 292. Double Loop open sugar or chalice - blue, very nice
- 230 293. Question Marks footed plate - purple, Georgia Bell & Puzzle exterior, extra nice
- 175 294. Question Marks footed plate - frosty white, contains three patterns, very nice
- 225 295. Double Stem Rose ruffled bowl - celeste blue, rare color, a beauty
- 110 296. Peacock & Urn compote - vaseline, very desirable, Fenton, beautiful
- 70 297. Peacock & Urn compote - lime green, very nice color and iridescence
- 150 298. Peacock & Urn compote - pastel blue, great color and iridescence, a beauty
- 130 299. Peacock & Urn compote - frosty white, fine iridescence, very scarce
- 85 300. Peacock & Urn compote, goblet shape - blue
- 30 301. Peacock & Urn compote - marigold, 3-part mold, goblet shape
- 35 302. Peacock & Urn compote, marigold, 2-part mold, goblet shape
- 40 303. Dahlia footed sauce - white, lovely color and pastel iridescence
- 190 304. Peacock & Urn bowl - moonstone, fantastic piece, extremely rare, beautiful!
- 200 305. Peacock & Urn bowl - green, scarce color, very nice
- 300 306. Peacock & Urn bowl - rare vaseline, entire bowl glows under black light, beautiful piece
- 200 307. Peacock & Urn bowl - blue, nice example
- 125 308. Peacock & Urn bowl - white, hard to find, very nice
- 70 309. Westmorland Hobstar Fruit sauce - peach opal, scarce piece
- 400 310. Imperial Loganberry vase - purple, tremendous color! great iridescence
- 35 311. Souvenir Banded mug, Collinsville, OK advertis. - marigold, Hartung Book 8, page 124
- 25 312. Souvenir mug - marigold, Hartung Book 6, page 115, "Amboy, MN"
- 80 313. Westmorland #270 compote - m/mg, beautiful and very rare in this color
- 50 314. Westmorland #270 compote - amber
- 80 315. Fenton stretch Fan vase - apricot, very nice color and iridescence
- 25 316. Maypole Variet vase - marigold
- 60 317. Melon Rib vase - Florentine green, glows under black light
- 170 318. Holly hat shape - moonstone, super color and rare, a beauty
- 250 319. Holly hat shape - red, deep red base glass
- 850 320. Dragon Tongues 11" bowl - dark marigold, great color and iridescence, very rare Fenton pattern, a beauty
- 1200 321. Fenton's Rose Tree bowl - blue, rare Fenton pattern, super color and irid., fabulous
- 400 322. Fenton Grape & Cable, I.C.S. bowl - moonstone/marigold overlay, super color and iridescence, a beauty
- 550 ~~600~~ 323. Fenton G/C footed ruffled bowl - celeste blue, beautiful, super iridescence, very rare
- 100 324. Panther sauce - blue, scarce
- 80 325. Hearts & Trees footed bowl - marigold, rare Fenton pattern, nice example
- 100 326. Big Basketweave miniature basket - marigold
- 50 327. Lattice & Points low vase or hat shape - frosty white, excellent iridescence
- 50 328. Bo Peep mug - orange opaline, not iridized, unusual pretty color
- 50 329. Bo Peep mug - blue opaline, not iridized, unusual pretty color
- 20 330. Fostoria Brocaded Acorns tumblers (5) - ice blue, very nice, choice
- 35 331. Fostoria Brocaded Acorns tall goblet - ice blue, scarce, nice one
- 50 332. Fostoria Brocaded Acorns champagne - ice blue, rare, a beauty
- 30 333. Fostoria Brocaded Acorns sherbet - ice blue, nice delicate pastel
- 275 334. Four-Seventy-Four milk pitcher - green, very nice color and iridescence
- 160 335. Four-Seventy-Four milk pitcher - marigold, hard to find, good example
- 90 336. Orange Tree loving cup - dark marigold, super color and iridescence, small epoxy at handle
- 15 337. Grape & Cable punch cup - stippled purple, great color and iridescence
- 15 338. Grape & Cable punch cup, stippled - pastel marigold, unusual rare color
- 40 339. Grape & Cable punch cups (2), stippled - green, one super, one good, choice
- 55 340. Grape & Cable punch cup, stippled - blue
- 20 341. Grape & Cable cups, plain (2) - blue, super color and iridescence, choice
- 25 342. Grape & Cable punch cup - lime green, rare and a beauty
- 50 343. Grape & Cable punch cup - ice green, rare
- 60 344. Grape & Cable punch cup - ice blue, rare
- 65 345. Grape & Cable punch cup - white, hard to come by
- 375 346. Stag & Holly giant rosebowl - dark marigold, super color and iridescence, a beauty
- 220 347. Stag & Holly large 10" bowl - blue, very choice color, great iridescence
- 140 348. Stag & Holly small footed bowl - green, great color and super iridescence
- 375 349. Peacock & Grape bowl, C.R.E. - peach opal, hard to find, good color and iridescence
- 55 350. Heisey Diamond Quilted cup and saucer - light marigold, both pieces signed
- 25 351. Herringbone compote - dark marigold, very seldom seen, nice iridescence
- 55 352. Question Marks footed bon bon - frosty white, scarce color in this pattern, very nice
- 110 353. Imperial Grape carafe - green, rare in this color
- 110 354. Imperial Grape carafe - purple, super color and iridescence

85, 067.50



- 200 355. Imperial Grape 8-pc. wine set - dark marigold, very nice set
- 130 356. **Coinspot compote - stretch cobalt blue**, very rare, you rarely see cobalt blue stretch glass
- 30 357. Wide Panel compote - stretch cobalt blue, rare and unusual color in stretch
- 60 358. Stippled Rays compote - vaseline, glows under black light
- 80 359. Stippled Rays compote - lime green, glows under black light
- 110 360. Drapery candy dish - ice blue, super color and iridescence
- 100 361. **Grape Delight rosebowl - smokey amethyst**, unusual color, perfect feet
- 275 362. Frosted Block rosebowl - clambroth, signed "Made in U.S.A.", super iridescence
- 50 363. Oval & Round rosebowl - dark marigold
- 40 364. "N" Diamond Point vase - i.g., super and rare, but has a small no harm stress crack in base
- 60 365. "N" Diamond Point vase - white, very nice iridescence
- 160 366. Drapery vase - ice blue
- 170 367. **Vintage Banded mug - smoke, super rare mug**, smoke goes all the way to top
- 25 30 368. Vintage Banded mugs (3) - marigold, very nice color and iridescence, selling choice
- 5 369. Vintage Banded mug - ice green, not iridized
- 35 370. Tree of Life rosebowl - marigold
- 130 371. **Fenton Butterflies (Horlacher adv.) bon bon - amethyst**
- 60 372. "N" Panelled Holly bon bon - green
- 60 373. Ribbon Tie bowl, C.R.E. - amethyst, very nice color and iridescence
- 100 374. Folding Fan compote - peach opal, super
- 30 375. Vintage sandwich tray w/center handle - marigold
- 60 376. Fenton stretch sandwich tray - Florentine green, glows under black light
- 3600 377. **Rose Show plate - emerald green**, great color and iridescence, beautiful!
- 250 378. **Cherry Chain 10" shallow bowl, C.R.E. - super blue**, beautiful
- 50 379. Fenton Illusion bon bon - blue, choice color and iridescence
- 2700 380. **Embroidered Mums bowl, P.C.E. - sapphire blue, extremely rare, only one reported**, exquisite piece
- 1800 381. **Embroidered Mums bowl, ruffled - lime green opal**, extremely rare - super, super!!!
- 1100 382. **Embroidered Mums bowl, ruffled - ice green**, a rare beauty, seldom offered for sale
- 2250 383. **Embroidered Mums bowl, ruffled - aqua opal**, pastel, lots of opal, very rare
- 700 1000 384. **Embroidered Mums bowl, ruffled - electric blue**, fantastic color and iridescence
- 900 385. **Embroidered Mums bowl, ruffled - ice blue**, beautiful, super iridescence, one of the best
- 860 386. **Embroidered Mums bowl, ruffled - aqua**, very rare color, gorgeous
- 1000 387. **Embroidered Mums bowl, ruffled - amber**, super color, **only one we have seen**, fantastic
- 1600 388. **Embroidered Mums bowl, ruffled - lavender**, very rare color, beautiful
- 400 389. Embroidered Mums bowl, ruffled - marigold, deep rich marigold, a beauty
- 350 390. Embroidered Mums bowl, ruffled - pastel marigold, lovely pastel pinks and blues
- 300 391. Embroidered Mums bowl, ruffled - purple, fabulous color and iridescence
- 40 392. Fenton Acorns bowl - unusual light blue, hard color to call
- 50 393. Split Diamond miniature creamer - marigold
- 40 394. Thistle & Thorn creamer - dark marigold, very nice
- 40 20 395. Melon Rib miniature tumbler - marigold, nice iridescence
- 375 396. **"N" Peacock on Fence plate**, smooth back - **ice green**, great color and iridescence
- 800 397. **"N" Peacock on Fence plate, stippled - electric blue**, super color and iridescence
- 600 398. **Harvest Poppy compote - green**, fantastic color and iridescence, rare and beautiful
- 350 399. **Harvest Poppy compote - purple**, seldom seen pattern, a dandy
- 400 400. **Harvest Poppy compote - marigold**, nice example, hard to find
- 60 401. **Lattice & Daisy tumbler - cobalt blue**, Owens #108, rare in blue, a beauty - 55
- 60 402. File tumbler - dark marigold, Owens #61, very nice, rarely seen
- 160 403. **Beaded Shell tumbler - blue**, a beauty, rare in this color - 90-110
- 40 404. Beaded Shell tumbler - dark marigold, super color and iridescence, scarce
- 210 405. **Wide Panelled Thistle tumbler - blue**, very rare and a beauty, seldom offered for sale - 300
- 200 406. **Adam's Rib handled tumbler - Florentine green**, rare, a beauty, entire tumbler glows under black light
- 110 407. **Fenton's stretch lemonade tumbler - wisteria (lavender)**, with blue handle, rare
- 170 408. **Colonial stretch lemonade tumbler - red**, Owens #198, very rare, super iridescence, a beauty
- 110 409. Colonial stretch lemonade tumbler - celeste blue, Owens #198
- 55 410. Cosmos & Cane tumbler - honey amber, Owens #25, super color and iridescence
- 40 20 411. Acorn Burrs punch cups (3) - frosty white, nice
- 40 20 412. Acorn Burrs punch cups (2) - green, nice
- 1750 413. **Wild Strawberry low 10" bowl - ice green**, extremely rare, **only three reported**, super color and iridescence, a beauty
- 225 414. Leaf & Beads rosebowl - electric blue, great color and iridescence
- 250 415. Leaf & Beads rosebowl - aqua opal, great color and iridescence, a beauty
- 275 416. **Leaf & Beads rosebowl - olive green**, very rare Sawtooth edge at top, unusual
- 110 417. Leaf & Beads rosebowl - amethyst, very nice electric iridescence
- 80 418. Leaf & Beads rosebowl - green, smooth interior
- 75 419. Leaf & Beads rosebowl - dark marigold, a beauty, Flower Petals interior

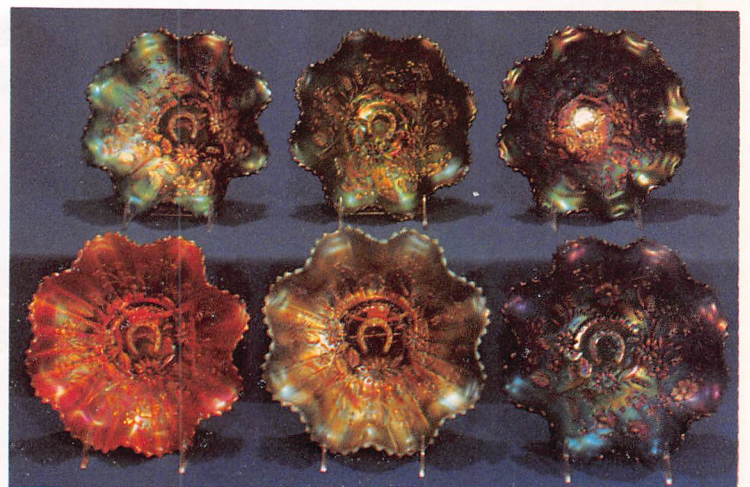
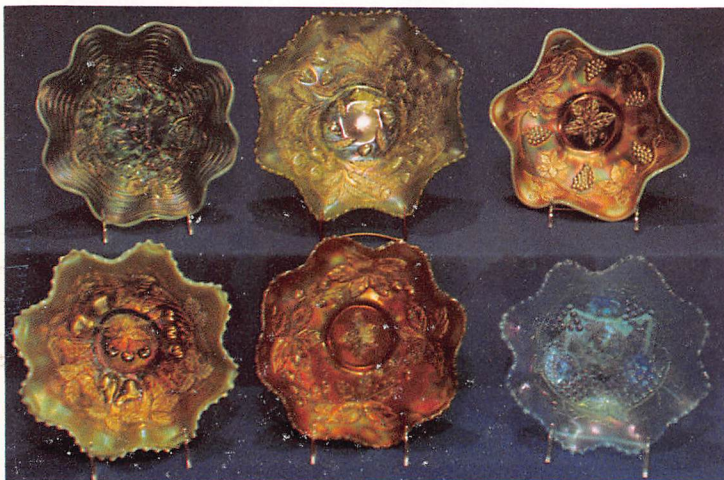
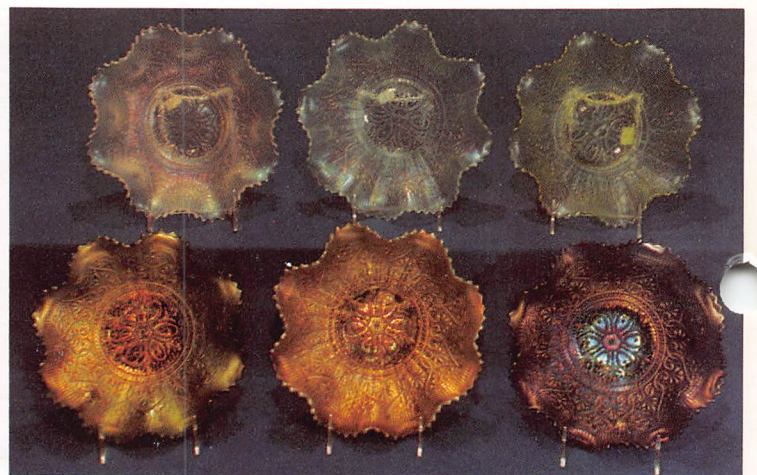
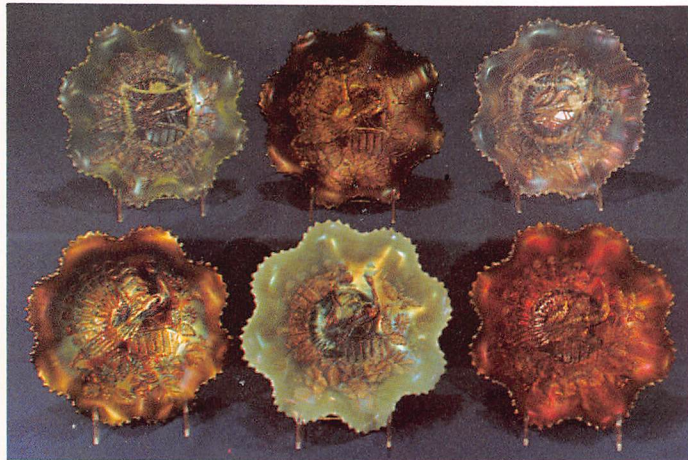
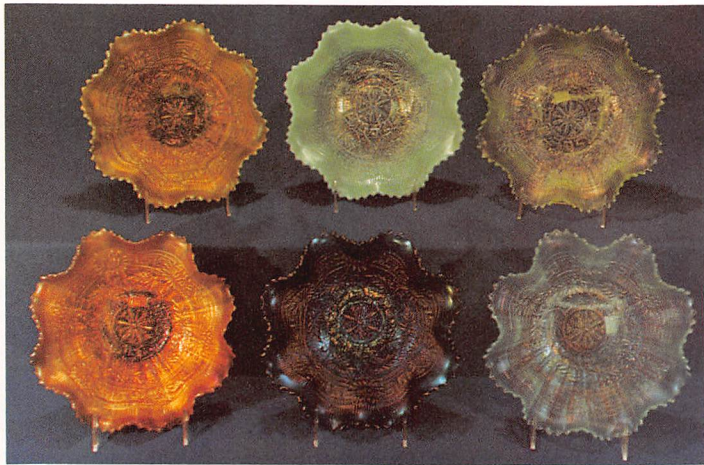
111,647.50



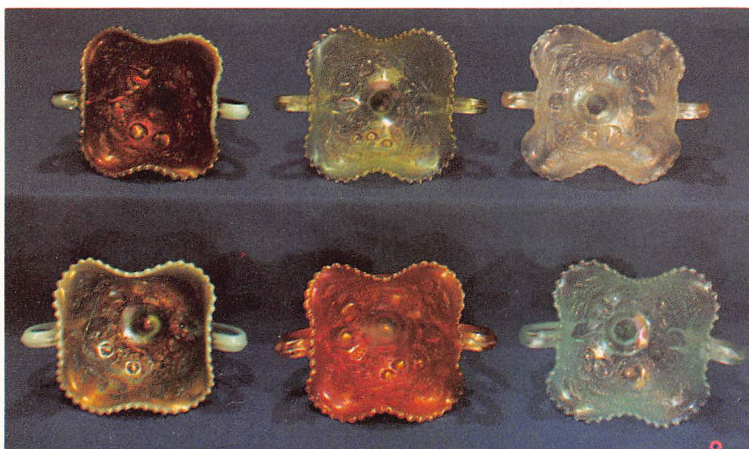
- 150 420. Leaf & Beads rosebowl - aqua teal, super, very rare, but has a crack in bottom
- 80 421. Leaf & Beads rosebowl - marigold, Rays interior
- 60 422. Leaf & Beads nut bowl - purple, Petals interior
- 90 423. Leaf & Beads rosebowl - blue opal, not iridized, lots of opal
- 80 424. Leaf & Beads rosebowl - blue opal, not iridized, opal tips
- 500 425. **Fenton Plume Panels 11" vase - red**, very nice one, rare
- 50 426. Fenton Plume Panels 13" vase - green, very good
- 425 427. **Dandelion mug - electric blue**, super color and iridescence, fantastic!!
- 150 428. **Dandelion mug - aqua opal**, lots of opal, **one of the best we have seen**
- 300 429. Dandelion mug - purple, outstanding color and iridescence
- 325 430. Dandelion mug - amethyst, excellent color and iridescence
- 300 431. Dandelion mug - deep marigold, very nice
- 220 432. Dandelion mug - cobalt blue
- 1200 433. **Three Fruits stippled collar-base bowl - aqua opal**, super pastel color and irid., lots of opal, exquisite
- 275 434. **Rose Garden large rosebowl - blue**, hard to find
- 750 435. **Rose Garden small rosebowl - deep marigold**, rare, a super little rosebowl
- 350 436. **"Roods Chocolate" plate - amethyst**, super rare advertising plate, a beauty
- 550 437. **Elks 1911 Atlantic City, I.C.S. bowl - blue**, great color and iridescence, a beauty
- 75 438. Alfred Steiner advertising ash tray - marigold
- 30 439. Stretch covered candy dish - celeste blue, "1864-1924, 60th Anniversary Masonic Lodge"
- 70 440. Fenton Fine Ribs 11" vase - pastel blue, unusual color, nice
- 50 441. Fenton Fine Ribs 11" vase - green, scarce color
- 40 442. Fenton Fine Ribs 9½" vase - pastel blue, unusual color, nice
- 50 443. Four-Seventy-Four goblet - marigold, nice color and iridescence, desirable
- 40 444. Tulip & Cane goblet - dark marigold, scarce
- 30 445. Heisey Colonial goblet, signed Heisey - clear with iridescence
- 35 446. Half Flute souvenir goblet - green
- 300 447. Three Fruits plate, stippled - cobalt blue
- 675 448. Peacocks on Fence, P.C.E. bowl - purple, super color and iridescence
- 90 449. Bells & Beads 7" 3-in-1 edge bowl - peach opal, a beauty
- 525 450. **Wild Rose syrup - marigold**, very rare, super color and iridescence - 500 \*
- 250 451. **Fisherman mug - lavender**, very rare color
- 330 452. Fisherman mug - purple, very nice color and iridescence
- 180 453. Fisherman mug - dark marigold, very good iridescence
- 121, 372.50



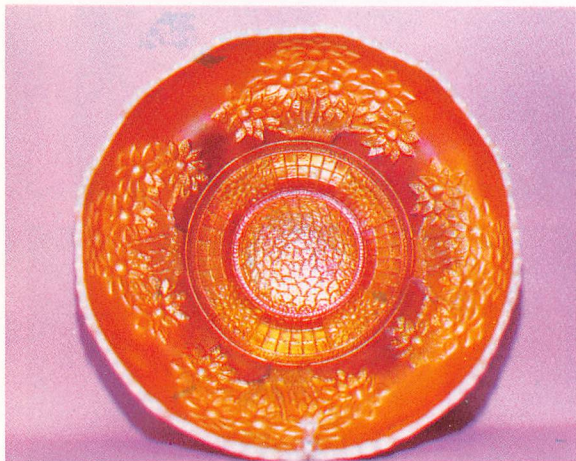












475 454. **Fisherman mug - dark marigold with red Fish and Waterlily, only one known**, from Whitlow collection; a beauty, but has a crack in the handle

1150 455. **Good Luck ruffled bowl - sapphire blue**, very rare color, super iridescence, gorgeous

425 456. **Good Luck ruffled bowl - brown or horehound**, very unusual color and rare

325 457. **Good Luck ruffled bowl - green**, Basketweave exterior, outstanding color and iridescence

250 458. **Good Luck ruffled bowl - stippled blue**, hard to find

275 459. **Good Luck ruffled bowl - electric blue**, top notch!

1000 460. **Good Luck ruffled bowl - aqua opal**, rare color in this pattern

300 461. **Good Luck ruffled bowl - purple/electric blue** iridescence, super quality

175 462. **Good Luck ruffled bowl - dark marigold**, gorgeous color and iridescence, super piece

130 463. **Good Luck ruffled bowl - pastel marigold**, very nice piece

90 464. **Ribbed Panels rosebowl - blue opaque**, very good iridescence

45 465. **Colonial pedestal rosebowl - blue opaque**, very good iridescence

1400 466. **Peacock on Fence punch cup - aqua opal**, very rare punch cup, a beauty

1800 467. **Acorn Burrs punch cup - aqua opal**, lot of opal, extremely rare, fantastic

550 468. **Grape & Cable punch cup - aqua opal**, very rare, **only a few known to exist**

125 469. **Grape & Cable punch cup - stippled teal blue**, very rare, beautiful color and iridescence

70 470. **Stream of Hearts compote - dark marigold**, very nice color and iridescence

575 471. **Perfection tumbler - marigold**, extremely rare, great color and iridescence ~~400~~

280 472. **Grape Arbor tumbler - frosty white**, super iridescence

125 473. **Cut Cosmos tumbler - dark marigold**, rare beauty, **have never seen a better one**

180 474. **Dandelion tumbler - frosty white**, rare in this color, very nice iridescence

275 475. **Millersburg Cherries tumbler - green**, Owens #20, (base not ground), super iridescence

230 476. **Millersburg Cherries Variet tumbler - marigold**, (factory ground base), gorgeous color and iridescence, rare ~~200~~

175 477. **Octagon Variet tumbler, collar base - aqua teal**, extremely rare beautiful color ~~150~~

450 478. **Inverted Feather tumbler - green**, Cambridge, rare, fantastic color and iridescence ~~400-500~~

1000 479. **"N" Peacock & Urn master ice cream - ice green**, a beauty, super color and iridescence

750 480. **"N" Peacock & Urn master ice cream - ice blue**, a super piece

60 481. **Brocaded Palms pedestal footed oblong relish tray - pastel green**, rare

2000 482. **Imperial 3-Row vase - purple**, extremely rare, gorgeous color and iridescence, we have only seen two or three, a fantastic piece

400 483. **Colonial Lady vase - purple**, rare, super color and iridescence

1361 337.50



- 600 484. **Colonial Lady vase - dark marigold**, a beauty, rare  
50 485. **Oval & Thumbprint vase - purple**, fantastic color, very scarce  
400 486. **Oval & Thumbprint vase - dark marigold**, a beauty, very hard to find  
300 487. **Fashion breakfast set - smoke**, a beautiful set, very rare, seldom seen  
90 488. **Fashion tumbler - dark smoke**, super color and iridescence - 75-100  
325 489. **Fashion punch cup - red**, extremely rare  
450 490. **Fashion rosebowl - green**, very rare; how many have you seen?  
200 491. **Imperial Interior Panels breakfast set - red**, very rare set, super color  
400 492. **Imperial 6-sided candlestick, pair - purple**, very nice color and iridescence, rare set  
425 493. **Bouquet 7-pc. water set - marigold**, very nice color and iridescence  
600 494. **Millersburg Hanging Cherries sauce, I.C.S. - blue**, very rare in blue, a dandy  
325 495. **"N" Peacock & Urn sauce, I.C.S. - electric blue**, flares out, top doesn't roll in, fantastic color and iridescence  
175 496. **Grape & Cable sauce, I.C.S. - ice green**, very rare, great color and iridescence, a beauty  
100 497. **Grape & Cable sauce, I.C.S., almost flat - frosty white**, rare, beautiful  
90 498. **Grape & Cable ruffled sauce - cobalt blue**, very nice, rare color  
50 499. **Curved Star butterdish - marigold**  
190 500. **Curved Star rosebowl - marigold**  
501 501. **Curved Star candlestick - marigold**, also used as part of an epergne  
100 502. **Curved Star powder jar - marigold**  
45 503. **Button & Optic goblet - marigold**, old Imperial mark  
300 504. **Button & Optic wines (2) - marigold**, old Imperial mark  
3000 505. **Hearts & Flowers compote - irid. custard or moonstone**, extremely rare, gorgeous color and iridescence  
2250 506. **Hearts & Flowers compote - green**, very rare in this color, fantastic  
850 507. **Hearts & Flowers compote - ice green**, very rare color, great piece  
600 508. **Hearts & Flowers compote - ice blue**, another hard to find color \*  
225 509. **Hearts & Flowers compote - white**, nice iridescence \*  
350 510. **Hearts & Flowers compote - purple**, tough to find, very nice  
425 511. **Hearts & Flowers compote - pastel aqua opal**, a beauty  
450 512. **Hearts & Flowers compote - aqua opal with butterscotch**, a nice one  
300 513. **Hearts & Flowers compote - cobalt blue**, good example  
150 514. **Hearts & Flowers compote - marigold**, super iridescence  
105 515. **Hearts & Flowers compote - blue opal**, not iridized, lots of opal
- 625 516. **Fenton Cherries banana boat - blue**, extremely rare, only 3 or 4 reported, outstanding, super color and iridescence, a beauty  
300 517. **Little Flowers 10" bowl - brown**, unusual and rare piece, only one we have seen  
100 518. **Octet domed footed bowl - green**, this color rare  
650 519. **Daisy & Drapes vase - ice blue**, very rare  
500 520. **Daisy & Drapes vase - aqua opal**, a beauty  
200 521. **Daisy & Drapes vase - cobalt blue**, fantastic color and iridescence, unbelievably beautiful  
500 522. **Daisy & Drapes vase - pastel blue opal**, only one we have seen in this color, super pastel  
150 523. **Daisy & Drapes vase - white**, nice example  
450 524. **Daisy & Drapes vase - purple**, great color and iridescence, a beautiful piece - 350-400  
375 525. **Daisy & Drapes vase - marigold**, very nice color and iridescence  
70 526. **Daisy & Drapes vase - custard w/nutmeg**, damage  
2500 527. **Double Star whimsey cuspidor - green**, extremely rare, made from a tumbler, one of a kind, outstanding piece  
350 528. **Prayer Rug bon bon - custard with marigold overlay**, super color and iridescence, hard to find, a beauty  
400 529. **"N" Tree Trunk mid-size vase - ice blue**, a beauty  
325 530. **"N" Tree Trunk mid-size vase - ice green**, rare color, very nice example  
250 531. **"N" Tree Trunk mid-size vase - blue**, very nice color and iridescence  
225 532. **"N" Tree Trunk mid-size vase - frosty white**, super iridescence  
200 533. **"N" Tree Trunk mid-size vase - purple**, gorgeous  
225 534. **"N" Tree Trunk mid-size vase - green**, super  
180 535. **Palm Beach 4 1/2" whimsey rosebowl - honey amber**, made from spooner, rare shape  
200 536. **Soda Gold salt and pepper shakers - smoke**, super iridescence, very good tops, rarely seen  
110 537. **Etched 7-pc. Grape juice set - marigold**, a rare set  
650 538. **Autumn Acorn bowl - Persian blue**, very rare color in this pattern, super piece  
300 539. **Hearts & Flowers ruffled bowl - ice blue**  
525 540. **Captive Rose plate - green**, very scarce Fenton color  
375 541. **Open Rose rosebowl - purple**, very rare, only 4 or 5 reported, super color and iridescence  
80 542. **Open Rose rosebowl - amber**, very nice  
170 543. **Hobstar Band dome footed pitcher - marigold**, good color and iridescence, hard to find  
650 544. **Peacocks on Fence plate - purple**, great color and iridescence, a beauty  
50x2 545. **Dandelion or Sunflower tumblers (2) - purple**  
60x2 546. **Dandelion or Sunflower tumblers (2) - green**, super color and iridescence  
50 547. **Imperial Flute tumbler - marigold**, Old Imperial mark in base, rather rare  
110 548. **Strawberry Scroll tumbler - marigold**, rarely seen, very nice

163,307.50



- 50 549. Strawberry Scroll tumbler - marigold, very nice, small bruise in base
- 35 550. Footed Orange Tree tumbler - marigold, pastel iridescence, perfect feet
- 20 551. Late Waterlily tumbler - marigold, Owens #197, a nice one
- 60 552. Milady tumbler - marigold, hard to find color
- 110 553. Orange Tree plate - pastel marigold, great iridescence
- 3600 554. **Chrysanthemum 9½" collar base bowl - super red**, extremely choice color and iridescence
- 850 555. **Diamond Point rosebowl - good marigold**, extremely rare, **only one reported**, very nice iridescence
- 70 556. Millersburg Rays & Ribbons, I.C.S. bowl - marigold, super color & iridescence, beauty
- 325 557. **Dugan Heavy Grape 11" bowl - peach opal**, very rare, super color & iridescence, beauty
- 175 558. **"N" Flute nut or salt cup - rare vaseline**, super color and iridescence
- 80 559. **"N" Flute nut or salt cup - marigold**, very good color and iridescence, not easy to find
- 150 560. **Cigarette holder - vaseline**, Fenton, super color and iridescence, fluorescent under black light
- 85 561. Sailboats wine - blue, scarce in dark
- 20x3 562. Octagon wines (3) - marigold, choice
- 80 563. Flute toothpick - dark marigold
- 600 564. **Fruits & Flowers 7" bowl - ice green**, very rare, good color and iridescence
- 550 565. **Grape & Cable 7½" bowl - ice blue**, very rare, super color and iridescence, epoxy on base
- 50 566. **Cambridge Hobstar punch cup - green**, extremely rare, super cup
- 65 567. Millersburg Hobstar & Feather punch cup - green, hard to find
- 50 568. Millersburg Hobstar & Feather punch cup - amethyst, very nice
- 15x2 569. Millersburg Hobstar & Feather punch cups (2) - marigold, very nice
- 2000 570. **Orange Tree bowl - moonstone**, I.C.S., most beautiful piece of Carnival, spectacular!!
- 1800 571. **Orange Tree bowl, I.C.S. - fantastic red!!!** gorgeous color and iridescence
- 2000 572. **Orange Tree & Trunk, I.C.S. - peach opal**, **only two reported in this color**, extremely rare, fantastic
- 200 573. Orange Tree & Trunk, I.C.S. - green, super color and iridescence
- 175 574. Orange Tree & Trunk, I.C.S. - white, very frosty, super iridescence
- 75 575. Orange Tree bowl, I.C.S. - blue, very nice color and iridescence
- 75 576. Orange Tree bowl, I.C.S. - dark marigold, excellent iridescence
- 70 577. Orange Tree bowl, I.C.S. - white, does not have the trunk in base
- 150 578. **Australian "For a Good Boy, 1928" mug - dk. marigold**, very rare mug and a nice one
- 600 579. **Daisy Squares rosebowl - green**, two sides turned up, fantastic
- 1000 580. **Heart & Horseshoe (Fenton's Good Luck)** very low bowl - rich marigold, extremely rare super
- 1500 581. **Rose Show bowl - blue opal (not aqua)**, rare, super color and iridescence, a beauty
- 425 582. **Butterfly & Berry fernery - blue**, very rare whimsy, only a few known
- 80 583. Be Wise Owl Bank - marigold, good rich color, super iridescence
- 60 584. Lucky Bank, barrel-shaped - marigold, nice
- 35 585. Pig Bank - marigold, good
- 150 586. Strawberry bowl, P.C.E. (Basketweave exterior) - purple
- 300 587. Four Flower Varient plate - olive green, very nice plate
- 300 588. Apple Blossom Twig plate - blue
- 1300 589. **Cosmos & Cane pedestal ftd. rosebowl - honey amber**, extremely rare, fantastic
- 200 590. **Cosmos & Cane miniature punch bowl or compote - honey amber**, rarely offered for sale
- 250 591. **Cosmos & Cane miniature punch bowl or compote - lavender**, a beauty
- 60 592. Cosmos & Cane/Headress interior 6" bowl - frosty white, good iridescence
- 900 593. **G/C centerpiece bowl - ice blue**, rare, super color and iridescence
- 125 594. **Heart Band mug - aqua teal**, extremely rare
- 60 595. Heart Band mug - marigold, scarce
- 175 596. Heron mug - purple, super, no silver on this
- 100 597. Beaded Shell mug - marigold, lovely example, from Hartung collection
- 100 598. **Ball & Swirl mug - marigold**, see H.O. C.G.A. notebook, rare mug
- 1000 599. Holly ruffled bowl - red, getting hard to find
- 170 600. **Palm Beach rosebowl - honey amber**, very nice, scarce, a beauty
- 40 75 3 45 20 35 601. Eight (8) Carnival Glass beaded purses (to be sold separately)
- 80 602. **Dotted Diamond & Daisy enamelled tumbler - marigold**, Whitley #22, very nice
- 50 603. Floral & Leaves/Wide Panel interior, em. tumbler - marigold, not listed in any book
- 40 604. Iris with Prism Band em. tumbler - green, Whitley #31 -
- 80 605. Crocus Vt. #2 - amethyst, we don't find this one in the books, rare color
- 50 606. Forget-Me-Not em. tumbler - green, Whitley #26
- 30 607. Chrysanthemum enamelled tumbler - marigold, Whitley #4
- 20 608. Crocus enamelled tumbler - marigold, Whitley #14
- 25 609. Magnolia & Drape enamelled tumbler - marigold, Whitley #41
- 90 610. Magnolia & Drape with Prism Band enamelled tumbler - marigold, super, don't find this one in the books -
- 5 ea 611. Late Sunflower juice tumblers (2) - marigold, Whitley #34
- 650 612. **Orange Tree shaving mug - red slag**, tremely rare, a beauty

187, 192.50



- 350 613. **Orange Tree shaving mug - lime green**, super color, glows under black light
- 60 614. **Orange Tree shaving mug - aqua**, straight-up sides, super
- 250 615. **Orange Tree shaving mug - aqua**, flared out top, a beauty
- 225 616. **Orange Tree shaving mug - custard**, only one we have seen in custard, very rare, no iridescence
- 200 617. **Orange Tree shaving mug - amethyst**, rare color
- 275 618. **Orange Tree shaving mug - purple**, hard-to-come-by color
- 180 619. **Orange Tree shaving mug - smokey blue**, unusual and rare color
- 50 620. **Orange Tree shaving mug - blue**, straight-up sides, unusual shape, very nice
- 50 621. **Orange Tree shaving mug - cobalt blue**, not iridized, beautiful blue
- 120 622. **Jacob's Ladder rosebowl - dark marigold**, only one reported, from Presznick collection, super piece
- 120 623. **Weeping Cherries dome ftd. bowl - good marigold**, not found very often
- 210 624. **G/C 11" ice cream bowl - ice blue**, fantastic and gorgeous piece, only three reported
- 200 625. **Soutache ftd. crimped-edge plate - peach opal**, super color and iridescence, a beauty
- 500 626. **Persian Medallion bon bon - celeste blue**, extremely rare, only 4 or 5 reported, fantastic color and iridescence, a beauty
- 150 627. **Persian Medallion bon bon - red**, super piece
628. **Persian Medallion bon bon - aqua**, rare color
- 110 629. **Persian Medallion bon bon - vaseline**, fabulous color and iridescence
- 80 630. **Persian Medallion bon bon - green**, card tray-shape
- 30 631. **Diamond & Sunburst wine - purple**, super color and iridescence, a beauty
- 160 632. **Imperial Ripple 15 1/2" vase - amber**, very nice
- 40 633. **Imperial Ripple vases (2) - amber**, one 9" and one 10 3/4", very nice
- 90 634. **Imperial Ripple 9" vase**, clear glass with iridescence, rare
- 300 635. **Peacock at Fountain tumbler - rare green**, super color and iridescence, a beauty - 350
- 425 636. **Peacock at Fountain tumbler - ice blue**, top color and iridescence, beautiful - 250
- 450 637. **Rising Sun tumbler - beautiful dark marigold**, Owens #201, super color and iridescence, one of the best we have seen 400
- 225 638. **Circle Scroll tumbler - marigold**, very nice, super iridescence, tough to come by
- 175 639. **Palm Beach tumbler - white**, very frosty, Owens #133, super iridescence, very scarce
- 225 640. **Oklahoma tumbler - deep marigold**, Owens #128, very rare and a beauty 350
- 250 641. **Chataleine tumbler - purple**, beautiful Imperial, fantastic iridescence, Owens #16
- 60 642. **Drapery Variant tumbler - marigold**, Owens #39, very nice, rare
- 3 643. **Interior Poinsettia tumbler - dark marigold**, very rare and a nice example 350
- 1450 644. **Finecut & Roses rosebowl - ice green**, only one known, att: Jo Brown, super rare beauty
- 225 645. **Finecut & Roses rosebowl - smokey blue**, very unusual and rare color
- 1000 646. **Finecut & Roses rosebowl - aqua opal**, a rare piece, very nice
- 850 647. **Finecut & Roses rosebowl (not ruffled at top) whimsey - beautiful lavender**, the only one known in this shape
- 550 648. **Finecut & Roses rosebowl - amber or horehound**, a beauty
- 200 649. **Finecut & Roses rosebowl - green**, super iridescence and color
- 300 650. **Finecut & Roses rosebowl - ice blue**, fine
- 1500 651. **Finecut & Roses rosebowl - dark pastel blue**, almost celeste
- 200 652. **Finecut & Roses rosebowl - purple**, fancy interior, purple very scarce w/fancy interior
- 200 653. **Finecut & Roses rosebowl - dark marigold**, super iridescence
- 150 654. **Finecut & Roses rosebowl - custard**, not iridized
- 250 655. **Fenton Daisy bon bon - blue**, super piece, seldom seen
- 800 656. **Aztec rosebowl - marigold**, extremely rare, see H.O.A.C.G.A. notebook, only one reported, signed PRES-CUT
- 1000 657. **"N" Tree Trunk 17" funeral vase - white**, very frosty w/excellent irid., gorgeous, very rare
- 1000 658. **"N" Tree Trunk 20" funeral vase - cobalt blue**, excellent color and iridescence, a beauty
- 1300 659. **"N" Tree Trunk 12 1/2" funeral vase - purple**, super duper, outstanding irid. and color, (Lots 657-659 have elephant foot bases.)
- 300 660. **Poppy Show vase - dark marigold** over the entire vase, good even color
- 625 661. **Zippered Loop 9" lamp - marigold**, very nice
- 225 662. **Constellation compote - amethyst**, rare color
- 75 663. **Constellation compote - frosty white**, super iridescence
- 90 664. **Little Flowers whimsey tri-cornered small dish - green**, very nice
- 70 665. **Ski Star sauce - peach opal**, very nice
- 225 666. **Checkers rosebowl - marigold**
- 250 667. **File whimsey vase, shaped like Rococo vase - marigold**, made from File spooner, very rare
- 400 668. **Scales plate - Milk Glass with marigold overlay**, fantastic color and iridescence, a beauty
- 35 669. **Northern Star card tray - marigold**, not often found
- 2000 670. **Dragon & Lotus ruffled bowl - aqua opal**, a beautiful and very rare bowl
- 1700 671. **Dragon & Lotus ruffled bowl - moonstone**, an exquisite top notch piece, super!!
- 1700 672. **Dragon & Lotus ruffled bowl - super red**, absolutely fantastic piece!!
- 475 673. **Dragon & Lotus ruffled bowl - peach opal**, beautiful light pastel iridescence, gorgeous
- 675 674. **Dragon & Lotus ruffled bowl - marigold opal**, deep color with opal edge, super nice, rare
- 225 675. **Dragon & Lotus ruffled bowl - green**, outstanding color and iridescence

215, 1917, 50



- 225 676. Dragon & Lotus ruffled bowl - amethyst, WOW! super iridescence and color!
- 300 677. **Dragon & Lotus ruffled bowl - lime green**, glows under black light, scarce color
- 50 678. S-Repeat punch cup - purple, super color and iridescence
- 20 679. Waffle Block punch cup - clambroth, super iridescence and scarce color
- 10 680. Wreath of Roses/Vintage punch cup - marigold
- 30 681. Wreath of Roses/Vintage punch cup - blue
- 50 682. Wreath of Roses/Persian Medallion punch cup - blue
- 35 683. Broken Arches punch cup - smoke
- 50 684. Fashion punch cup - smoke
- 50 685. **Imperial Flute punch cup - deep purple**, a beauty
- 10 686. Fruit Salad punch cup - marigold
- 300 687. **Mary Ann 3-handled loving cup - dark marigold**, a rare and beautiful piece
- 675 688. **Imperial Grape rosebowl - amber**, very rare in this shape and color
- 325 689. **Inverted Strawberry breakfast creamer - amethyst**, very rare
- 175 690. **Grape & Cable, I.C.S. bowl - moonstone**, hard to find
- 1000 691. **Grape & Cable, P.C.E. bowl - ice blue**, collar base, fantastic color and iridescence, rare
- 175 692. Fanciful flat plate - frosty white, great irid.
- 400 693. **Peacock & Urn small ice creams - ice green**, very rare in this color, (3 selling separately)
- 250 694. Plain goblet - celeste blue stretch, nice color, scarce
- 30 695. Fancy Flute advertising goblet - marigold
- 80 696. **Stork & Rushes mug - lavender**, very rare color, a beauty
- 70 697. Stork & Rushes mug - amberish marigold, unusual color, very nice
- 450 698. **Daisy Wreath bowl - blue opal with blue moonstone base**, beautiful and rare
- 175 699. **Daisy Wreath bowl - Milk Glass with marigold overlay**, very nice
- 50 700. Hen on Nest covered butterdish - marigold
- 90 701. Wishbone footed bowl - green, nice
- 200 702. **Dragon & Lotus ftd. bowl, I.C.S. - green**, super color and iridescence
- 130 703. **Imperial Flute sherbet and underplate - red**, very nice set
- 600 704. **Holly hat - super red**, turned up on two sides, excellent iridescence; **shouts at you!!**
- 125 705. **Blackberry Spray hat - green**, turned up on two sides, **rare color**
- 350 706. **Persian Garden 2-pc. fruit bowl - frosty white** - beautiful set, rare
- 800 707. **Persian Garden 2-pc. fruit bowl - purple**, super color and iridescence, seldom offered for sale
- 500 708. **Strawberry bon bon - lime green opal**, very rare piece, glows under black light
- 80 709. Strawberry bon bon - amber, choice color
- 160 710. **Orange Tree mug, small - amberina** with 1 1/2" red strip around mug, very rare, a beauty
- 120 711. **Orange Tree mug, small - pastel blue**, very rare and unusual color, super piece
- 100 712. **Orange Tree mug, small - amber**, rare Fenton color, a dandy
- 350 713. **Orange Tree mug, small - lime green**, very nice one, really glows under black light
- 90 714. Orange Tree mug, small - light amethyst, very nice, rare example
- 140 715. Orange Tree mug, small - amberina, very unusual color, very nice
- 80 716. Orange Tree mug, small - purple, seldom seen in purple
- 600 717. **Orange Tree mug, small - sapphire blue base, teal blue top**, beautiful and rare
- 60 718. Orange Tree mug, small - blue, very choice iridescence, super
- 100 719. Orange Tree mug, small - deep marigold, fantastic color and iridescence
- 30 720. Orange Tree mug, small - pastel marigold, very unusual color
- 80 721. Orange Tree mug, small - Persian blue opal, not iridized, has decoration
- 50 722. Orange Tree mug, small - Persian blue with decoration, not iridized
- 30 723. Orange Tree mug, small - pink, not iridized
- 400 724. Orange Tree mug, small - light green, not iridized
- 25 725. Grape & Cable stemmed ice cream - purple, excellent example
- 45 726. Orange Tree stemmed ice cream or berry - blue, super color and iridescence
- 175 727. **Diamond Ring rosebowl - dark marigold**, rare shape, a beauty
- 50 728. Smooth Rays pedestal base rosebowl - green
- 225 729. Embossed Scroll 9 1/4" plate - amethyst, Imperial, getting harder to find
- 90 730. Crabclaw tumbler - marigold, great color and iridescence
- 160 731. **Field Thistle vase - marigold**, made by U.S. Glass, very seldom seen
- 70 732. Big Basketweave vase - frosty white, super color and iridescence
- 70 733. Handled vase - white, very unusual, not often seen
- 250 734. **G/C bon bon - frosty white**, rare, beautiful color and iridescence, super
- 75 735. **G/C bon bon - green**, great color and irid.
- 1400 736. **Beaded Cable rosebowl - ice green**, extremely rare, a gorgeous piece
- 80 737. **Beaded Cable rosebowl - ice blue**, very nice example, rarely offered for sale
- 235 738. Beaded Cable rosebowl - aqua opal, nice color and iridescence
- 1200 739. **Beaded Cable rosebowl - lime green opal**, very unusual lime green feet and base as opposed to aqua, a beauty and rare
- 450 740. **Beaded Cable rosebowl - white**, frosty pastel iridescence, very scarce and desirable
- 175 741. Beaded Cable rosebowl - blue, electric blue iridescence
- 250 742. Beaded Cable rosebowl - green, rather hard to find, super

232, 142.50



- 110 743. Beaded Cable rosebowl - dark marigold, great color and iridescence  
 70 744. Beaded Cable rosebowl - custard, not irid.  
 160 745. **Sea Thistle (Scroll & Cane) rosebowl - marigold**, very rare  
 60 746. **Four-Seventy-Four punch base - aqua teal**, iridized on inside, could be used as a candy dish or compote, a beauty  
 6x15 747. **Four-Seventy-Four punch cups (6) - aqua teal**, beautiful color, selling choice or all  
 800 748. **Orange Tree punch set/8 cups - white**, very nice set with good color and iridescence  
 900 749. **Broken Arches punch set/8 cups - purple**, excellent color and iridescence  
 750 750. **Wide Panel 4-lily epergne - purple**, very good color and iridescence, a beauty  
 250 751. Flute & Cane pitcher - dark marigold, rare  
 30 752. Imperial Grape ruffled bowl - purple, good example  
 2800 753. **Rose Show bowl - emerald green**, fantastic color and iridescence, outstanding piece  
 1 250 754. **Plaid shallow bowl - green**, fantastic color and iridescence, a beauty  
 800 755. **Grape & Cable ftd. plate - ice green**, rare and desirable, super piece  
 50 756. Colonial Rose bowl - marigold  
 1600 757. **"N" Butterfly/Threaded exterior bon bon - ice blue**, extremely rare, only 3 or 4 reported  
 300 758. **"N" Butterfly/Threaded exterior bon bon - electric blue**, super color and iridescence  
 275 759. **"N" Butterfly/Threaded exterior bon bon - purple**, fantastic!  
 70 760. **"N" Butterfly/plain exterior bon bon - smoke**, very rare, only the second one we have seen  
 200 761. **"N" Butterfly/plain exterior bon bon - green**, choice color and iridescence  
 110 762. Bells & Beads tri-cornered crimped-edge bowl - super peach opal  
 375 763. Kittens cup and saucer - dark marigold, very good color and iridescence  
 110 764. **Button & Optic cup and saucer - dark marigold**, old Imperial mark, rare  
 90 765. **Lotus & Grape bon bon - vaseline**, a beauty, glows under the light  
 80 766. Lotus & Grape bon bon - green, very nice, scarce color  
 1 40 767. **Carolina Dogwood bowl - moonstone**, very rare color, fantastic piece  
 225 768. **Carolina Dogwood bowl - blue opal**, extra nice color and iridescence  
 130 769. Carolina Dogwood bowl - peach opal, nice example  
 120 770. Floral & Grape tumbler - white, Owens #162, nice  
 40 771. G/C tankard or king-size tumbler - amethyst, Owens #85  
 40 772. Rambler Rose tumbler - amethyst, rare in this color - 45  
 50 773. Rambler Rose tumbler - blue, Owens #142 - 35  
 45 774. Rambler Rose tumblers (3) - marigold, very nice color  
 2 775. Lattice & Grape tumblers (2) - marigold, Owens #110
- 475 776. "N" Peacock on Fence plate/ribbed back - ice green, getting harder to find  
 65 777. Fenton Bouquet tumbler - blue, nice example  
 495 778. **Captive Rose plate - amethyst**, rare color in this pattern, super color and iridescence  
 250 779. Good Luck ruffled bowl - purple, very nice  
 600 780. **Dragon & Lotus, C.R.E. bowl - peach opal**, fantastic color and iridescence  
 60 781. Millersburg Rays & Ribbons bowl - green  
 240 782. "N" round Bushel basket - ice green  
 60 783. Starfish compote - peach opal, super  
 90 784. Peacock & Urn small ice cream - blue  
 35 785. Feathered Serpent sauce - amethyst  
 190 786. Art Glass-type vase - Rubina Verde  
 100 787. Persian Medallion rosebowl - custard, with green stain, rarely seen  
 40 788. Question Mark candy dish - blue opal, not iridized, pretty piece  
 80 789. Daisy & Plume rosebowl - green opal, no iridescence, lots of opal  
 110 790. Vintage 7 1/2" plate - blue  
 110 791. Vintage 6" plate - amethyst  
 90 792. Vintage 6" plate - green  
 70 793. Diamond & Daisy cut tumbler - marigold, Owens #36, nice dark one  
 50 794. Lustre Rose tumbler - purple  
 15 795. "N" Flute Vt. tumbler - marigold, Owens #68, seldom seen, lemonade-size  
 55 796. Waterlily & Cattails tumbler - dark marigold, Fenton, Owens #176  
 15 797. Waterlily & Cattails tumbler - light marigold, Northwood, Owens #177  
 25 798. "N" Swirl tumbler - marigold, Owens #167  
 50 799. Jewelled Heart tumbler - dark marigold  
 10 800. Tree of Life tumbler - marigold, Owens #172  
 50 801. Stippled Strawberry tumbler - marigold, Owens #161  
 50 802. Hobstar Band Vt. tumbler - marigold, Owens #97  
 45 803. Singing Birds mug - dark marigold, very nice  
 210 804. Dandelion mug - purple, good color and irid.  
 25 805. Orange Tree small-size mug - marigold  
 45 806. Souvenir mug - green, unlisted pattern  
 30 807. Golden Oxen beer mug - marigold  
 20 808. Johanna mug - light marigold, see in H.O.A. C.G.A. notebook  
 45 809. Frank Pope souvenir mug - light marigold  
 80 810. "N" Beaded Cable candy dish - green  
 40 811. Dugan Rose Spray goblet shape - marigold  
 80 812. Pond Lily card tray - white  
 35 813. Millersburg Holly Sprig card tray - marigold  
 20 814. Flute candlestick - olive green  
 150 815. Large Open Rose fruit bowl - purple, unusual factory-painted exterior  
 80 816. English powder jar - marigold  
 50 817. Crabclaw bowl - smoke  
 60 818. Dogwood Spray footed bowl - peach opal  
 90 819. Dugans Caroline, C.R.E. bowl - peach opal  
 10x2 820. Fenton stretch goblet shapes (2) - apricot  
 10 821. Fenton etched Grape goblet shape - white  
 50 822. Interior Panels handled basket - marigold  
 35 823. Bowl on metal base - vaseline, glows under light
- 249, 332.50



- ~~275~~ 824. "N" round Bushel basket - aqua opal  
10 825. "N" Flute sherbet - amethyst  
30 826. Blackberry Bramble compote - marigold  
15 827. Panelled Smocking (Diamond Band) open sugar - marigold  
10 828. Twitch creamer - marigold  
160 829. Grape & Cable shot glass - marigold  
B-9 60 830. Six assorted wines  
5 831. Fenton G/C small bowl - marigold with opal, very rare color, but has a crack  
10 832. Hattie rosebowl - dark marigold, super iridescence, but has a crack  
5 833. Baby Joe juice glasses (3) - marigold and cranberry  
NS 834. Mt. Dora Drape wine - clear with iridescence  
10 835. Lidia shot glass - marigold  
2 1/2 20 836. Six assorted goblets - 5 marigold and 1 clear  
5 837. Niagara Falls souvenir milk pitcher - marigold, Depression-era  
7 1/2 838. Tree of Life goblet shapes (2) - marigold  
200 A-1. Metal lamp with three "Grapes" red Carnival Glass shades  
175 A-2. H.O.A.C.G.A. whiskey decanter and 6 shots - red, 1976  
100 A-3. H.O.A.C.G.A. 7-pc. water set - red, 1974  
160 A-4. Tiger Lily 5-pc. water set (I.G.) - ice blue

- 170 A-5. Imperial Grape decanter and 6 wines (I.G.) - ice blue  
80 A-6. Grape & Cable tobacco jar - purple, Presnick Carnival Museum, Lodi, Ohio, 1969, signed Fenton  
160 A-7. 4-lily epergne - Velva Rose (pink), signed Fenton, 75th Anniversary  
50 A-8. U.S. Capitol, Washington, D.C. 10 1/2" plate (I.G.) - red, '69 America the Beautiful series  
175 A-9. Hobnail town pump - green, signed Robert Hanson  
20 A-10. Souvenir flask - purple, I.C.G.A., Gateway Arch, St. Louis, MO, 1969  
300 A-11. Kittens miniature handled basket - red, Encore 1982, signed Fenton  
60 A-12. H.O.A.C.G.A. Corn vase - ice blue, signed Fenton, 1982  
85 A-13. H.O.A.C.G.A. Corn vase - red, signed Fenton, 1978  
60 A-14. H.O.A.C.G.A. Corn vase - mulberry, signed Fenton, 1982  
40 A-15. Robin mug - red, A.C.G.A., Washington, D.C., 1967  
60 A-16. Acanthus Imperial mug (I.G.) - red, Everglades  
50 A-17. H.O.A.C.G.A. loving cup - red, 1979  
15 A-18. A.C.G.A. Beaded Shell mug - amber, 1971, Cincinnati, Ohio

251,614.00



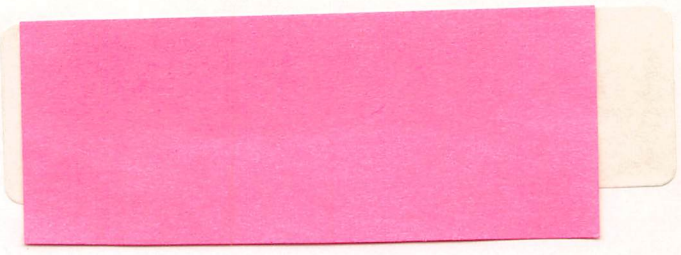
**Notes:**



# WOODY AUCTION

Douglass, Ks. 67039 (316) 746-2694

FIRST CLASS



Address Correction Requested

