



AUCTION SERVICE Carnival Glass Auction

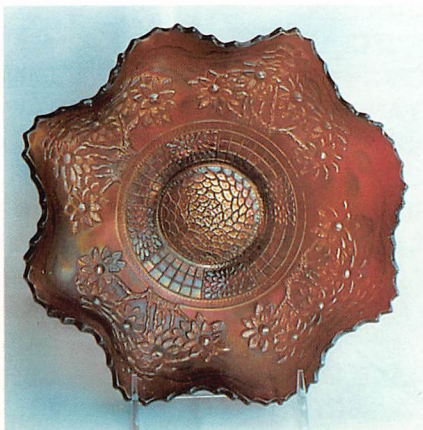
Friday & Saturday, November 11 & 12, 1988

Friday - 6:30 pm (4:00 pm preview), Saturday - 10:00 am (8:00 am preview)

at the **Hudson Holiday Inn**

240 Hines Hill Road, Hudson, Ohio 44236

(216)653-9191



Mail Bids honored under the following conditions:

1. No deposit required. Bidders will take full responsibility to honor any and all bids we execute for them. Payment in full plus postage and handling required after notification and before we ship any item to them.
2. Items are bid on in perfect condition with average or above average iridescence OR as listed in the brochures. Bids will not be carried out when damage on an item has been found during the auction.
3. Successful bidders will be notified by collect call from the auctioneer **(so be sure to include phone number)**.
4. Phone inquiries about the glass or any other questions are welcome.
5. All non-successful bids will receive a result summary in the mail. Results of all bids will be provided.
6. If you have some other person at the auction bidding for you, they must pay for the item before taking it.
7. Mail bids due by Noon Thursday, November 10, 1988. **NO LATER, PLEASE!**

What a way to round out a very enjoyable and educational year! We've enjoyed this year and hope the next one is just as good - if not better!

We are pleased to present at auction the collection of Dale and Lou Knight from Phoenix, Arizona. For approximately 12 years these folks have forged through the southwest accumulating a selection of patterns, colors, and rarities making up one of the finest collections to ever have come from this area of the country. There will be a large number of interesting items from all manufacturers offered assuring no one will be disappointed by attending this event. It should be a great climax to a great year. Hope to see you all there!

The Hudson Holiday Inn will host the event. The motel is conveniently located just off Ohio Turnpike Exit 12 on Route 8 - the southside of Cleveland. For reservations, please call the motel direct at (216) 653-9191 and please be sure to mention Burns Auction Service. We hope to have a block of rooms, so be sure to attend.

Mail bids are due by noon, Thursday, November 10, 1988. No Ohio sales tax.

Burns Auction Service

Tom Burns
109 East Steuben Street
Bath, New York 14810
(607) 776-7942

Bill Richards
44 Water Street
Poland, Ohio 44514
(216) 757-2001

- | | |
|---|---|
| <u>5</u> 1. Fenton ind. Nut Cup - Stretch - Ice Green (scarce) | <u>55</u> 12. Fenton Orange Tree Standard Mug - Amy. (very scarce color) |
| <u>40</u> 2. U. S. Glass Portland Covered Powder Jar - Mari. (scarce item, crystal lid) | <u>25</u> 13. Fenton Orange Tree Standard Mug - Blue (nice color and irid.) |
| <u>45</u> 3. U. S. Glass Shriners Champagne Glass - 1909 Louisville, Ky. - Clear | <u>25</u> 14. Fenton Orange Tree Standard Mug - Pur. (silver; rare color) |
| <u>400</u> 4. U. S. Glass Shriners Champagne Glass - 1910 New Orleans - Clear | <u>1500</u> 15. 9" FENTON ORANGE TREE RUFFLED BOWL - RED (RARE AND DESIRABLE ITEM WITH GOOD COLOR AND IRID.) |
| <u>200</u> 5. FENTON KITTENS BANANA DISH - BLUE (GOOD COLOR AND DETAIL; RARE) | <u>100</u> 16. FENTON ORANGE TREE 2-HANDLED LOVING CUP - BLUE (SCARCE AND VERY DESIRABLE) |
| <u>175</u> 6. FENTON KITTENS TOOTHPICK HOLDER - BLUE (VERY SCARCE WITH GOOD COLOR) | <u>225</u> 17. Fenton Ftd. Orange Tree 7 pc. Water Set - White (very scarce set; has some damage) |
| <u>175</u> 7. FENTON KITTENS SQUATTY TOOTHPICK HOLDER - MARI. (GOOD COLOR AND NICE) | <u>60</u> 18. 6" Fenton Pine Cone Plate with Panelled ext. - Mari. |
| <u>65</u> 8. FENTON KITTENS CUP AND SAUCER - MARI. (GOOD COLOR; A SCARCE SET) | <u>100</u> 19. 6 1/2" Fenton Pine Cone Plate - Blue (good detail) |
| <u>185</u> 9. Fenton Orange Tree Stemmed Sherbet - White (very rare color for this item) | <u>210</u> 20. 6" FENTON PERSIAN MEDALLION PLATE - BLACK AMY. (VERY RARE AND UNUSUAL; GOOD RARE ITEM) |
| <u>155</u> 10. FENTON ORANGE TREE SHAVING MUG - MARI./VAS. (SCARCE AND VERY COLLECTIBLE) | <u>140</u> 21. 6" FENTON PERSIAN MEDALLION PLATE - LT. MARI./VAS. (VERY RARE COLOR FOR THIS ITEM) |
| <u>155</u> 11. FENTON ORANGE TREE STANDARD MUG - AQUA (SCARCE COLOR AND COLLECTIBLE) | |

- 160 22. 7 1/2" Fenton Horsehead Medallion Plate - Mari. (very scarce)
- 160 23. 7 1/2" Fenton Horsehead Medallion Plate - Mari. (very scarce)
- 95 24. 6 1/2" Fenton Vintage Grape Plate - Green (scarce item)
- 2000 25. N CORN VASE - TEAL BLUE (AN EXTREMELY RARE ITEM; A KEY IN THIS PATTERN; A SUPER PIECE)
- 350 26. N CORN VASE - DK. GREEN (RARE WITH VERY GOOD COLOR; ONE KERNEL HAS A SMALL BRUISE)
- 375 27. N CORN VASE - PUR. (GOOD COLOR AND IRID.; RARE AND DESIRABLE)
- 800 28. N CORN VASE - DK. MARI. (VERY RARE; GOOD DARK COLOR AND IRID.; NICE)
- 400 29. N CORN VASE - ICE GREEN (VERY SCARCE AND GOOD COLOR)
- 325 30. N CORN VASE - WHITE (SCARCE AND NICE)
- 325 31. N DAISY AND DRAPERY FTD. VASE - TURNED IN - MARI. (VERY SCARCE AND DESIRABLE; HAS GOOD COLOR)
- 50 32. N Daisy and Drapery ftd. Vase - turned in - White (damaged on pillar)
33. N Pillar Rib Vase - Aqua Opal. (scarce; has roughness on feet)
- 240 34. N LARGE SIZE TORNADO VASE - GREEN (VERY SCARCE WITH GOOD COLOR; HAS A PINHEAD SOMEWHERE)
- 325 35. N DRAPERY ROSE BOWL - AQUA OPAL. (SCARCE AND VERY DESIRABLE)
- 150 36. N DRAPERY ROSE BOWL WITH PLAIN EDGE - PUR. (VERY SCARCE ITEM WITH GOOD COLOR AND QUALITY)
- 170 37. N LEAF AND BEADS FTD. ROSE BOWL AQUA OPAL. (SCARCE WITH GOOD COLOR)
- 75 38. N Leaf and Beads ftd. Rose Bowl - Aqua Opal. (scarce; has manuf. separation on foot)
- 150 39. N LEAF AND BEADS FTD. ROSE BOWL - ELEC. BLUE (SUPER COLOR AND SCARCE)
- 175 40. N BEADED CABLE FTD. ROSE BOWL - ELEC. BLUE (GOOD COLOR AND GOOD QUALITY)
- 150 41. N Fine Cut and Roses ftd. Rose Bowl with Fancy Int. - Ice Blue (scarce; has a polished foot)
- 80 42. N Fine Cut and Roses ftd. Ruffled Candy Dish with Fancy Int. - Ice Blue (scarce; typical roughness on feet)
- 100 43. N Fine Cut and Roses ftd. Rose Bowl - Mari. (nice irid.)
- 50 44. N Fine Cut and Roses ftd. Rose Bowl - Dk. Mari.
- 375 45. N DAISY AND PLUME FTD. ROSE BOWL - ICE GREEN (VERY RARE AND VERY DESIRABLE; HAS FLAKE OFF BOTTOM OF ONE FOOT)
- 325 46. N ROUND BUSHEL BASKET - AQUA OPAL.
- 120 47. N Eight Sided Bushel Basket - White (scarce)
- 30 48. N Double Loop Chalice or Open Sugar - Blue (scarce with good color)
- 27 1/2 49. N Petals Stemmed Compote - Mari.
- 1150 50. 9" N ROSE SHOW RUFFLED BOWL - ICE GREEN (EXT. RARE AND PERFECT; GOOD COLOR AND IRID. - VERY NICE ITEM)
- 250 51. 9" N ROSE SHOW RUFFLED BOWL - GREEN (VERY RARE COLOR; HAS BRUISE ON A ROSE)
- 650 52. 9" N ROSE SHOW RUFFLED BOWL - AQUA OPAL. (VERY RARE WITH GOOD COLOR; A NICE ITEM)
- 300 53. 8 3/4" N ROSE SHOW RUFFLED BOWL - WHITE - (VERY SCARCE AND HAS GOOD COLOR)
- 250 54. 9" N ROSE SHOW RUFFLED BOWL - PUR. (SUPER COLOR AND QUALITY; VERY SCARCE)
- 675 55. 9" N POPPY SHOW RUFFLED BOWL - ELEC. BLUE (SUPER COLOR AND VERY DESIRABLE)
- 500 56. 9 1/4" N POPPY SHOW PLATE - BLUE (GOOD COLOR AND IRID.; HAS PINHEAD ON BASE)
- 500 57. 9 1/2" N POPPY SHOW PLATE - MARI. (GOOD IRID. AND PERFECT; RARE)
- 650 58. 9 1/2" N ROSE SHOW PLATE - DK. MARI. (GOOD IRID. AND PERFECT; RARE)
- 525 59. 9 1/2" N ROSE SHOW PLATE - BLUE (RARE AND DESIRABLE; HAS NO HARM PINHEAD ON EDGE)
- 275 60. 9 1/2" N ROSE SHOW PLATE - ELEC. BLUE (RARE; HAS SOME DAMAGE ON ROSES)
61. 9 1/4" N ROSE SHOW PLATE - AMY. (RARE; HAS DAMAGE ON ROSES)
- 450 62. N BUTTERFLY 2 HANDLED BON BON WITH SPIRAL EXT. - ELEC. BLUE (VERY RARE AND COLLECTIBLE; GOOD COLOR)
- 175 63. N BUTTERFLY 2 HANDLED BON BON WITH SPIRAL EXT. - PUR. (VERY SCARCE ITEM WITH GOOD COLOR)
- 200 64. N Butterfly 2 Handled Bon bon with Spiral ext. - Pur. (very scarce)
- 860 65. 10" N PEACOCK AT THE URN LG. ICE CREAM BOWL - ICE BLUE (RARE AND DESIRABLE; HAS GOOD COLOR)
- 175 66. 10" N PEACOCK AT THE URN LG. ICE CREAM BOWL - MARI. (VERY GOOD COLOR AND ATTRACTIVE)
- 105X2 67. (2) N Peacock at the Urn ind. Ice Cream Bowls - Elec. Blue (very good color; sold per choice)
- 90 68. N Peacock at the Fountain Punch Cup - Lav. (very unusual color for this pattern)
- 425 69. N PEACOCK AT THE FOUNTAIN 6 PC. WATER SET - PUR. (VERY SCARCE SET; GOOD COLOR)

- 800 70. 9" N PEACOCKS RUFFLED BOWL WITH RIBBED EXT. - AQUA OPAL. (VERY DESIRABLE; GOOD OPAL. AND GOOD IRID.)
- 150 71. 8 3/4" N Peacocks Ruffled Bowl with Ribbed ext. - Green (very rare but has one point re-glued on the edge)
- 650 72. 9" N PEACOCKS PLATE WITH RIBBED EXT. - ELEC. BLUE (SUPER COLOR ON A VERY DESIRABLE ITEM)
- 550 73. 9" N PEACOCKS PLATE WITH RIBBED EXT. - PUR. (SUPER IRID. AND VERY DESIRABLE)
- 410 74. 9" N PEACOCKS PLATE WITH PLAIN EXT. - WHITE (VERY SCARCE)
- 450 75. 8 3/4" N PEACOCKS DEEP ROUND PLATE WITH RIBBED EXT. - DK. ICE GREEN (SORTA ODD DEEP SHAPE; UNUSUAL WITH VERY GOOD COLOR)
- 125 76. 9" Peacocks Plate with Ribbed ext. - Ice Green (nice color, but has flake on one point)
- 300 77. 8 1/2" N WISHBONE FTD. PLATE - MARI. (QUITE SCARCE; HAS LINE OF EXCESSIVE GLASS ON FACE)
- 200 78. 8" N WISHBONE TRI-CORNERED FTD. PLATE - PUR. (VERY RARE SHAPE AND VERY DESIRABLE)
- 850 79. N DANDELION (OR SUNFLOWER) TANKARD WATER PITCHER - PUR. (VERY GOOD COLOR AND VERY DESIRABLE)
- 1600 80. 9" N EMBROIDERED MUMS PLATE - ICE GREEN (EXTREMELY RARE AND VERY DESIRABLE; SUPER COLOR)
- 1500 81. 8 1/2" N EMBROIDERED MUMS RUFFLED BOWL - AQUA OPAL. (VERY RARE AND DESIRABLE; HAS 2 MANUF. CHECKS ON BASE; SUPER IRID.)
- 300 82. 9" N NIPPON BOWL WITH PIE CRUST EDGE - ICE BLUE (GOOD COLOR AND IRID.; VERY SCARCE)
- 425 83. 9" N HEART AND FLOWERS PLATE - PUR. (VERY RARE AND VERY DESIRABLE; SUPER COLOR)
- 300 84. 8 1/2" N HEART AND FLOWERS RUFFLED BOWL - DK. ICE BLUE (GOOD COLOR AND IRID.; VERY SCARCE AND NICE)
- 300 85. N HEART AND FLOWERS STEMMED COMPOTE - AQUA OPAL. (GOOD PASTEL IRID.; VERY SCARCE)
- 275 86. 6" N FERN BRANDS HANDGRIP PLATE - AMY. (VERY DESIRABLE WITH SUPER IRID.)
- 450 87. 5 1/2" OGDEN FURNITURE AND CARPET CO. - OGDEN, UTAH RUFFLED ADV. BOWL - AMY. (VERY SCARCE ITEM WITH GOOD COLOR AND QUALITY)
- 850 88. 5 1/2" GEO. W. GETTS PIANOS - GRAND FORKS, N. DAK. - DEEP ROUND ADV. BOWL - AMY. (VERY RARE SHAPE TO FIND IN THIS PATTERN; GOOD COLOR AND QUALITY)
- 475 89. 9" N STIPPLED G & C PLATE - OLD ROSE DISTILLING CO. - WINES AND LIQUORS, CHICAGO - GREEN (VERY SCARCE; GOOD COLOR AND QUALITY)
- 950 90. N G & C FTD. HATPIN HOLDER - ICE GREEN (EXTREMELY RARE AND DESIRABLE; HAS GOOD COLOR AND IRID., THERE'S A NO HARM SMALL CHIP ON ONE FOOT)
- 350 91. N G & C LARGE DRESSER TRAY - WHITE (VERY RARE AND VERY DESIRABLE; NICE COLOR)
- 225 92. N G & C PERFUME BOTTLE AND STOPPER - MARI. (VERY RARE; HAS CHIP OFF BOTTOM OF STOPPER)
- 400 93. N G & C Whiskey Decanter with no stopper - Pur. (who's got the stopper?)
- 25 94. N G & C Sugar Base Only - No Lid - Ice Green (tough part to find; has chip on base)
- 450 95. N G & C FTD. CENTERPIECE BOWL - POINTS TURNED IN - PUR. (VERY SCARCE AND HAS VERY GOOD COLOR)
- 225 96. N G & C FTD. BANANA BOAT - BLUE (VERY SCARCE; HAS AN ODD TINGE)
- 495 97. N G & C 5 PC. WATER SET - GREEN (VERY SCARCE COLOR)
- 165 98. 9" N G & C Plate with Basketweave ext. - Pur. (has super irid.)
- 85 99. 9" N G & C Variant Plate with Basketweave ext. - Pur. (good color and quality)
- 345 100. 8 3/4" N THREE FRUITS STIPPLED RUFFLED BOWL - AQUA OPAL. (VERY RARE; HAS GOOD COLOR AND QUALITY)
- 400 101. 9" N THREE FRUITS STIPPLED PLATE - ELEC. BLUE (VERY SCARCE WITH NICE IRID.)
- 225 102. 9" N Three Fruits Stippled Plate - Horehound (very rare tinge; has chip on front edge)
- 165 103. 7 1/2" N FRUITS AND FLOWERS PLATE - GREEN (VERY SCARCE COLOR FOR THIS ITEM)
- 175 104. 7 1/2" N FRUITS AND FLOWERS PLATE - PUR. (VERY SCARCE)
- 525 105. N FRUITS AND FLOWERS 2 HANDLED BON BON - ICE GREEN (VERY RARE AND VERY DESIRABLE; PERFECT WITH GOOD COLOR AND IRID.)
- 375 106. N FRUITS AND FLOWERS 2-HANDLED BON BON - AQUA OPAL. (VERY SCARCE; GOOD BUTTERSCOTCH IRID.)
- 175 107. N FRUITS AND FLOWERS 2-HANDLED BON BON - ELEC. BLUE (GOOD COLOR AND QUALITY)
- 125 108. 7 1/2 - 8" Fruits and Flowers 2 sided Banana Dish - Pur. (scarce shape)
- 425 109. 8 3/4" N THREE FRUITS SPATULA FTD. RUFFLED BOWL - AQUA OPAL. (SUPER COLOR AND SUPER OPAL.; VERY NICE)

- 550 110. 9" N GOOD LUCK PLATE WITH BASKET-WEAVE EXT. - PUR. (A VERY DESIRABLE ITEM WITH SUPER IRID.)
- 250 111. 9" N GOOD LUCK BOWL WITH PIE CRUST EDGE AND BASKETWEAVE EXT. - GREEN (VERY SCARCE AND NICE)
- 175 112. 8 3/4" N Good Luck Bowl with Pie Crust Edge and Ribbed ext. - Mari. (very nice color and quality)
- 175 113. 8" N WILD STRAWBERRY HANDGRIP PLATE - PUR. (VERY SCARCE)
- 100 114. 8" N WILD STRAWBERRY HANDGRIP PLATE-DK. MARI. (GOOD DARK COLOR AND SCARCE)
- 125 115. N ENAMELED APPLE BLOSSOM SPOONER - BLUE (VERY TOUGH ITEM TO FIND; NICE)
- 45 116. 10 3/4" N Thin Rib Swung Vase - Olive Green
- 22x2x1 117. (4) N Raspberry Tumblers - Mari.
- 140 118. 8 1/2" Tall Pair Northwood Stretch Panelled Candlesticks - Irid. Custard (scarce)
- 40x2 119. (2) N Drapery Variant Vases - Custard / Nutmeg (sold per each)
- 50 120. N Singing Bird Mug - Non-Irid. Opaque (odd item - old or new? old I think)
- 65 121. Dugan Fisherman's Mug - Pur. (good detail)
- 95 122. Dugan Beaded Shell Mug - Lt. Amy. (good color)
- 45 123. Dugan Beaded Shell Table Set Creamer Only - Lt. Mari.
- 100 124. DUGAN BEADED SHELL TUMBLER - LAV. (A VERY RARE AND UNUSUAL TINGE; NICE)
- 500 125. 8" DUGAN GRAPEVINE LATTICE FLAT PLATE - DEEP PUR. (ABSOLUTELY SUPER IRID. IN A TOUGH COLOR)
- 100 126. 7" Dugan Persian Garden Plate with Pool of Pearls ext. - White (scarce)
- 45 127. 6 1/2" Dugan Persian Garden Plate with Basketweave ext. - Mari. (has flake off one point)
- 175 128. 6 1/2" DUGAN WISHBONE AND SPADES PLATE - PUR. (SUPER COLOR AND DESIRABLE)
- 180 129. DUGAN CONSTELLATION STEMMED COMPOTE - PUR. (ABSOLUTELY SUPER IRID. IN A TOUGH COLOR)
- 425 130. 10" X 6 - 8" LARGE DUGAN PODS AND POSSIES RUFFLED BANANA DISH - PUR. (EXT. DESIRABLE ITEM WITH SUPER COLOR AND QUALITY)
- 250 131. 9 1/2" Dugan Wishbone and Spades Ruffled Master Berry Bowl - P. Opal. (scarce)
- 375 132. 9" DUGAN APPLE BLOSSOM TWIG PLATE WITH PLAIN EDGE - P. OPAL. (GOOD OPAL. AND DARK IRID.; SUPER)
- 140 133. 9 1/4" Dugan Apple Blossom Twigs Ruffled Plate or Bowl - P. Opal. (scarce)
- 65 134. 8 3/4" Dugan Apple Blossom Twigs Ruffled Plate - P. Opal. (scarce; has a pinhead)
- 200 135. 10 1/2" DUGAN HEAVY GRAPE RUFFLED BOWL WITH COMPASS EXT. - P. OPAL. (VERY RARE ITEM IN A RARE COLOR; HAS GOOD QUALITY)
- 300 136. 10 3/4" DUGAN HEAVY GRAPE RUFFLED BOWL WITH COMPASS EXT. - PUR. (RARE ITEM WITH GOOD COLOR AND QUALITY)
- 260 137. 11" Dugan Heavy Web Deep Round Bowl P. Opal. (a very rare item; but has a fingernail size flake on back edge)
- 95 138. Dugan Folding Fan 2 Sided Crimped Stemmed Compote - P. Opal. (scarce pattern)
- 65 139. Dugan Fan Deep Round ftd. ind. Sauce - P. Opal. (very scarce item)
- 70 140. Dugan Ski Star Domed Handgrip Plate - P. Opal. (very scarce)
- 55 141. 8" Dugan Holly Whirl Ruffled Bowl - P. Opal.
- 35 142. Dugan Question Mark 2 Handled Bon Bon - P. Opal.
- 25 143. Dugan Panelled Cherries 2 Sided Banana Shaped Ruffled ftd. Bowl - P. Opal. (very scarce shape; nice)
- 30 144. Dugan Panelled Cherries ftd. Ruffled Bowl - Pur.
- 55 145. Dugan Wreath of Roses Tri-Cornered Whimsey - Amy. (a scarce color for this shape)
- 20 146. Dugan Leaf Rays Handled Nappy - White
- 50 147. Dugan Leaf Rays Handled Nappy - Pur.
- 10 148. 5 3/4" Waterlily and Cattail Saucer - Dk. Mari.
- 55 149. 7" Dugan Daisy Dear Ruffled Hat - Odd Blue
- 30 150. 7" Dugan Golden Grape Ruffled Bowl - Mari.
- ## START OF SECOND SESSION
- 20 151. Pastel Swan Salt - Pink
- 22x2 152. Pastel Swan Salt - Celeste Blue
- 22x120 153. (2) Pastel Swan Salts - Ice Green
- 110 154. ENGLISH REGISTERED PASTEL SWAN OPEN SALT - VAS. OPAL. (NOT IRIDIZED, BUT A SUPER DESIRABLE ITEM)
- 85 155. Fostoria Brocaded Palms Large Ice Bucket - Pink (very scarce and very nice)
- 50 156. Pair Fostoria Brocaded Summer Gardens Short Candlesticks - Clear/Irid.
- 90 157. Ribbed Bulbous Art Glass Gas Shade - Aqua Opal. type (unusual)
- 25 158. English Pinwheel Ind. Creamer - Dk. Mari.
- 10x2 159. (2) Imp. Wide Panel Salt Dips - Mari.
- 300 160. IMP. GRAPE WATER PITCHER - PUR. (VERY SCARCE WITH GOOD COLOR)
- 40x2 161. (2) Imp. Grape Tumblers - Pur. (sold per each; nice color)
- 110 162. Imp. Hobstar Band 5 pc. Water Set - Lt. Mari.
- 75 163. Imp. Star Medallion Milk Pitcher - Smoke (scarce color)

- 55 164. 9" Imp. Open Rose Flat Plate - Clambroth (good color)
- 160 165. 11 - 11 1/4" IMP. HEAVY GRAPE CHOP PLATE - PUR. (SUPER COLOR AND VERY DESIRABLE)
- 100 166. 9 1/4" IMP. OPEN ROSE FLAT PLATE - PUR. (VERY RARE AND DESIRABLE; HAS FLAKE ON ONE ROSE)
- 35 167. 9 1/4" Imp. Grape Plate - Lt. Mari.
- 125 168. Imp. Grape Water Carafe - Pur. (very good color and nice)
- 90 169. Imp. Grape Water Carafe - Lt. Amy. (scarce; but has a bruise)
- 290 170. 6 1/2" IMP. GRAPE FLAT PLATE - AMBER (SUPER IRID. ON A VERY SCARCE ITEM)
- 120 171. 10" Imp. Acanthus Chop Plate - Mari. (very nice color and quality)
- 30 172. 8 1/2" Imp. Acanthus Deep Round Bowl - Mari.
- 27 1/2 173. Imp. Pansy Relish Tray - Lt. Smoke
- 45 174. 14 1/2" Imp. Wide Panel Chop Plate - Smoke
- 120 175. Imp. Flute Punch Bowl, Base and One Cup - Mari.
- 180 176. NEW IMP. ZIPPER LOOP KEROSENE LAMP - MARI. (FROM THE 60'S BUT VERY SCARCE)
- 170 177. IMP. ROCOCO VASE - SMOKE (VERY SCARCE AND VERY DESIRABLE; NICE)
- 80 178. Imp. Rococco Vase - Mari. (very good color)
- 140 179. 7 3/4" Tall Imp. Swirl Jack in the Pulpit Vase - Smoke
- 280 180. 4 3/4" TALL, 2 1/2" BASE IMP. TULIP AND CANE CLARET STEMMED WINE - MARI. (VERY RARE SIZE FOR THIS PATTERN)
- 10 181. Imp. Waffle Block ind. Breakfast Creamer - Clambroth
- 60 182. 9" Imp. Floral and Optic ftd. Bowl - Teal Blue (very scarce color, but has flake on foot)
- 130 183. (2) 10 - 10 3/4" Imp. Ripple Swung Vases - Teal/Aqua (very rare color; sold by choice)
- 10 184. 9 1/4" Imp. Smooth Rib Plate - Lt. Clambroth
- 150 185. 10 1/4" Imp. Chrysanthemum NuArt Chop Plate - Honey Amber (very rare; but has large bruise on base)
- 95 186. 9 1/2" Fenton Leaf Chain Plate with Berry ext. - Lt. Mari. (has nice irid.)
- 155 187. 9" Fenton Leaf Chain Plate with Berry ext. - Green (scarce; has silvery irid.)
- 50 188. 9 1/2" Fenton Leaf Chain Plate with Berry ext. - Blue (scarce with good color.)
- 65 189. 6" Fenton Pine Cone Plate - Blue
- 300 190. 10 1/2" FENTON PERSIAN MEDALLION CHOP PLATE - BLUE (VERY SCARCE ITEM WITH VERY GOOD COLOR)
- 75 191. 9" FENTON PEACOCK AT THE URN PLATE - BLUE (VERY SCARCE; HAS SOME ROUGHNESS ON PATTERN)
- 375 192. 9" FENTON PEACOCK AT THE URN PLATE - DK. MARI. (SUPER COLOR AND QUALITY; VERY NICE)
- 125 193. 9 1/2" FENTON TEN MUMS FTD. BOWL WITH CANDY RIBBON EDGE - MARI. (VERY SCARCE SHAPE FOR THIS SCARCE PATTERN)
- 40 194. 7" Fenton Lotus and Thistle Ruffled Bowl - Mari. (scarce pattern)
- 400 195. 9 1/4" FENTON TWO FLOWERS SPATULA FTD. PLATE - MARI. (VERY RARE WITH NICE COLOR AND QUALITY)
- 50 196. 9" Fenton Three Fruits Plate - Amy. (silvery/gold irid.; some wear on fruit)
- 22 1/2 197. 6" Fenton Stippled Rays Plate with Scale Band ext. - Mari.
- 25 198. Fenton Waterlily and Cattail Spooner - Mari. (a scarce item)
- 75 199. Fenton Waterlily and Cattail Large Toothpick Holder - Mari. (scarce)
- 1800 200. 9 1/2" FENTON ROSE TREE ICE CREAM SHAPED BOWL - BLUE (SUPER RARE WITH SUPER IRID. AND QUALITY; VERY NICE)
- 90 201. 10 1/4" Fenton Vintage Grape Low Bowl with 3 in 1 Edge - Blue (odd shape)
- 45 202. 9" Fenton Ribbon Tie (or Comet) Ruffled Bowl with 3 in 1 Edge - Blue
- 60 203. 10" Fenton Stag and Holly Large ftd. Ruffled Bowl - Blue (scarce with silvery irid.)
- 200 204. 9" FENTON PLAID RUFFLED BOWL - BLUE (VERY SCARCE PATTERN IN A SCARCE COLOR)
- 1700 205. FENTON STRAWBERRY SCROLL WATER PITCHER - BLUE (SUPER RARE, SUPER DESIRABLE; VERY GOOD COLOR AND NICE)
- 200 206. FENTON BUTTERFLY AND FERN 6 PC. WATER SET - AMY. (VERY RARE SET AND TOUGH TO FIND)
- 450 207. Fenton Bouquet Bulbous Water Pitcher - Mari. (scarce)
- 275 208. Fenton Lattice and Grape Tumbler - Mari.
- 150 209. Fenton Holly 2 Sided Hat - Aqua (scarce)
- 50 210. 9 3/4" FENTON HOLLY FLAT PLATE - WHITE (SCARCE WITH VERY GOOD COLOR AND IRID.)
- 230 211. 9 1/2" Fenton Holly Flat Plate - Dk. Mari. (good color; may have a pinhead)
- 75 212. 8 1/2" FENTON HOLLY BOWL WITH A 3 IN 1 EDGE - WHITE (VERY SCARCE SHAPE FOR THIS COLOR)
- 120 213. 9" FENTON HOLLY RUFFLED BOWL - MARI./VAS. (VERY SCARCE AND DESIRABLE COLOR)
- 120 214. 9" FENTON HOLLY RUFFLED BOWL - AMBER (VERY RARE COLOR FOR THIS PATTERN)
- 275 215. 9" FENTON HOLLY RUFFLED BOWL - RED (VERY RARE WITH GOOD COLOR AND IRID.)
- 550 216. FENTON PERSIAN MEDALLION 2 HANDLED BON BON - RED (RARE AND VERY DESIRABLE)
- 700

- 425 217. 16" FENTON FINE RIB SWUNG VASE - RED (SUPER COLOR AND MASSIVE; HAS A SMALL FLAKE ON THE INSIDE EDGE)
- 70 218. Fenton 2 Row Open Edge Hat - 2 Sides Up - Red (silvery; damaged)
- 80 219. 9" Fenton Lotus and Grape Ruffled Bowl - Green (scarce with good color)
- 325 220. 9 1/4" FENTON CAPTIVE ROSE FLAT PLATE - AMY. (OUTSTANDING COLOR AND IRID.; A SUPER EXAMPLE)
- 460 221. 9 1/2" FENTON CAPTIVE ROSE FLAT PLATE - GREEN (RARE AND DESIRABLE WITH VERY GOOD COLOR)
- 175 222. 9" Fenton Captive Rose Plate - Blue (scarce; has silvery irid.)
- 60 223. Fenton Captive Rose Stemmed Compote - Pale Mari.
- 70 224. Fenton Mikado Large Ruffled Compote - Mari. (scarce)
- 150 225. FENTON PEACOCK AT THE URN STEMMED COMPOTE - MARI./VAS. (SCARCE AND DESIRABLE; HAS GOOD COLOR)
- 40 226. 6 1/4" Fenton Leaf Chain Ice Cream Shaped Bowl - Mari./Vas. (scarce color for this pattern)
- 260 227. 6 - 6 1/2" FENTON SAILBOAT RUFFLED SAUCE - MARI./VAS. (SCARCE COLOR FOR THIS PATTERN)
- 60 228. 6 1/2 - 7" Fenton Sailboat Ruffled Sauce - Aqua (scarce color)
- 85 229. Fenton Lotus and Grape 2 Handled Bon Bon - Mari./Vas. (very scarce item)
- 100 230. 8 3/4" FENTON PEACOCK AND GRAPE RUFFLED BOWL - MARI./VAS. (VERY SCARCE WITH GOOD COLOR)
- 110 231. 8" FENTON PEACOCK AND GRAPE SPATULA FTD. RUFFLED BOWL - MARI./VAS. (RARE COLOR FOR THIS SHAPED ITEM; NICE)
- 170 232. 8" FENTON PEACOCK AND GRAPE ICE CREAM SHAPED FTD. BOWL - ICE GREEN OPAL. (OR LIME GREEN OPAL., VERY RARE AND DESIRABLE)
- 150 233. 9" FENTON PEACOCK AND GRAPE FLAT PLATE - MARI. (SCARCE AND VERY DESIRABLE; NICE)
- 120 234. 9" FENTON PEACOCK AND GRAPE FTD. PLATE - GREEN (VERY SCARCE; HAS A NICE SILVERY IRID.)
- 350 235. 8 3/4" FENTON DRAGON AND LOTUS RUFFLED BOWL - LIME GREEN OPAL. (RARE WITH GOOD COLOR AND OPAL.; NICE)
- 75 236. 8 1/2" Fenton Dragon and Lotus spatula ftd. Ruffled Bowl - Lime Green Opal. (rare, but has one foot filled with epoxy)
- 150 237. 9 1/4" FENTON DRAGON AND LOTUS RUFFLED BOWL - MARI./VAS. (SCARCE AND DESIRABLE COLOR; NICE)
- 460 238. 9" FENTON DRAGON AND LOTUS RUFFLED BOWL - AMBER (RARE COLOR FOR THIS PATTERN)
- 600 239. 7 1/2" FENTON G & C RUFFLED BOWL - AMBER (SUPER DEEP COLOR AND IRID.)
- 650 240. FENTON G & C BALL FTD. RUFFLED BOWL - CELESTE BLUE (VERY RARE AND IS SUPER DESIRABLE; GOOD QUALITY)
- 140 241. 7 1/2" Fenton G & C Ball ftd. Ruffled Bowl - Odd Blue with Mari. Overlay (odd color)
- 15 242. Fenton Blackberry Spray Jack In The Pulpit Ruffled Hat - Mari.
- 65 243. FENTON FLOWERS FTD. ROSE BOWL - AMY. (VERY SCARCE AND HAS GOOD COLOR)
- 85 244. Fenton Flowers ftd. Rose Bowl - Mari.
- 275 245. FENTON ROSE BOUQUET 2 HANDLED BON BON - WHITE (VERY RARE AND A TOUGH PATTERN TO FIND)
- 350 246. FENTON PRAYER RUG 2 HANDLED BON BON - MARI./CUSTARD (RARE AND HAS VERY GOOD COLOR AND QUALITY)
- 35 247. Fenton Rose Spray Goblet Shaped Compote - Mari.
248. 9 1/2" Fenton Rustic Swung Vase - White (scarce with good color)
- 20 249. 10 1/4" Fenton Peacock Tail Ruffled Bowl - Mari.
- 55 250. 8 1/2" FENTON CONCORD GRAPE RUFFLED BOWL - GREEN (SCARCE AND DESIRABLE PATTERN)
- 85 251. 8 3/4" Fenton Ragged Robin Bowl with a 3 in 1 Edge - Green (scarce pattern and color)
- 60 252. 9" Fenton Wild Blackberry Ruffled Bowl - Green (scarce pattern)
- 45 253. 8 3/4" Fenton Wild Blackberry Ruffled Bowl - Mari. (scarce pattern)
- 100 254. 9" Fenton Coral Ruffled Bowl - Mari. (scarce pattern with good color)
- 15 255. Fenton Magnolia and Drape Enameled Bulbous Water Pitcher - Mari. (scarce)
- 230 256. Fenton Stretch Hourglass Tankard Water Pitcher - Celeste Blue (very desirable; has applied Cobalt handle)
- 45 257. Fenton Stretch Handled Mug - Celeste Blue (has blue handle)
- 55 258. Fenton Flared Nut Cup or Salt - Ice Green
- 35 259. Stretch Concave Diamond Tumbler - Celeste Blue
- 30 260. Stretch Concave Tri-Cornered Top Bulbous Vase - Celeste Blue
- 30 261. Ranger (Jacob's Ladder) Tall Cone Shape Vase - Mari.
- 50 262. European Footed Prism Panels Vase - Mari.
- 65 263. LIBBEY MAIZE (CORN) VASE - LT. MARI./FLASH

- 10 264. Odd European Vintage Pattern 3 ftd. Fernery - Mari.
- 175 265. 9 1/2" FOUR FLOWER VARIANT PLATE WITH PLAIN EXT. - PUR. (RARE AND DESIRABLE; HAS GOOD COLOR)
- 160 266. 9 1/4" FOUR FLOWER VARIANT PLATE WITH OVAL EXT. - GREEN (RARE AND HAS VERY GOOD COLOR AND IRID.)
- 155 267. 9 1/2" FOUR FLOWER VARIANT PLATE WITH OVAL EXT. - YELLOW/AMBER (VERY ODD COLOR WITH GOOD IRID.; RARE)
- 45 268. 9" Four Flower Variant Ruffled Bowl - Emerald Green (good color, scarce)
- 75 269. 9" Four Flower Variant Ruffled Bowl - Odd Amber (scarce, odd tinge)
- 360 270. 9" DUGAN ROUND UP PLATE - BLUE (SCARCE ITEM WITH NICE COLOR AND QUALITY)
- 70 271. 9" Dugan Round Up Low Ruffled Bowl - White (good color)
- 95 272. 8 1/2" Dugan Fanciful Ruffled Bowl with 3 in 1 Edge - Lt. P. Opal. (scarce)
- 150 273. 9" Dugan Windflower Plate - Blue (scarce, good color)
- 100 274. Dugan Mary Ann Handled Vase - Amy. (scarce)
- 325 275. DUGAN FORMAL HATPIN HOLDER - PUR. (RARE AND DESIRABLE; HAS AVERAGE COLOR)
- 150 276. NAUTILUS NOVELTY OPEN SUGAR - PUR. (VERY DESIRABLE; IS SIGNED IN SCRIPT)
- 25 277. 8" Dugan Dogwood Sprays Deep Dome ftd. Ruffled Bowl - Pur. (scarce compote shape; nice)
- 45 278. 8 1/4" Dugan Malaga Grape Deep Round Bowl - Amy. (very scarce pattern)
- 40 279. 8 3/4" Dugan Malaga Grape Deep Round Bowl - Mari. (very scarce pattern)
- 170 280. DUGAN BUTTERFLY AND TULIP DEEP ROUND FTD. BOWL - AMY. (RARE SHAPE AND PATTERN; GOOD QUALITY)
- 110 281. Dugan Puzzle / Floral and Wheat 2 Handled Flared Bon Bon - Blue (scarce color)
- 85 282. Dugan Puzzle / Floral and Wheat 2 Handled Flared Bon Bon - White (scarce)
- 25 283. Dugan Question Mark 2 Handled Bon Bon - Mari./Lt. Green or Vaseline (very unusual base color)
- 25 284. 7" Dugan Fishscale and Beads Low Ruffled Bowl or Plate - P. Opal.
- 400 285. 10 3/4" DUGAN PODS AND POSIES CHOP PLATE - LT. P. OPAL. (RARE ITEM AND DESIRABLE)
- 50 286. 10 1/2" Dugan Ribbed int./Jewelled Heart ext. Large Ruffled Bowl - P. Opal.
- 50 287. 8 - 8 1/2" Dugan Raindrops / Keyhole ext. Deep Ruffled Domed Bowl - P. Opal.
- 30 288. 9" Dugan Single Flower ext. Ruffled Bowl with 3 in 1 Edge - P. Opal.
289. 8 1/2 - 9" Dugan Single Flower ext. Bowl with 3 in 1 Edge - P. Opal.
- 100 290. DUGAN HONEYCOMB ROSE BOWL - P. OPAL. (VERY SCARCE AND DESIRABLE; VERY NICE OPAL.)
- 130 291. 6 1/4" Tall Dugan Ribbed Jack In The Pulpit Vase With Tight Crimped Edge - P. Opal. (very desirable)
292. 7 - 8" Tall Dugan Thin Rib - Pinched In Vase - P. Opal
- 90 293. Jenkins Field Thistle Water Pitcher - Mari. (very scarce pattern)
- 140 294. Jenkins Field Thistle Tumbler - Mari. (scarce)
- 325 295. UNUSUAL "DAISY" ENAMELED DECORATED 7 PC. BLOWN MOLD WATER SET - LT. MARI. (VERY UNUSUAL AND VERY ATTRACTIVE; NICE)
- 60 296. Odd Interior Swirl Covered Water Pitcher and 4 Tumblers - Clear/Green Base
- 40x2 297. (2) Panelled Tumblers (Portland Type Pattern) - Lt. Mari. (sold choice)
- 15 298. 8 1/4" Fostoria Brocaded Daffodil Handled Cake Plate - Clear
- 40 299. (2) Fostoria Brocaded Acorn Large Stemmed Champagnes - Ice Blue (very scarce items; sold by the piece)
- 55 300. FOSTORIA BROCAIDED ACORN SMALL SUGAR BUCKET WITH HANDLE - LAV. (VERY SCARCE COLOR ON A SCARCE ITEM)
- 25 301. U. S. Glass Cosmos and Cane Tumbler - Mari. (has a bruise on the edge)
- 40x25 302. (5) U. S. Glass Cosmos and Cane ind. Berry Bowls - Honey Amber (scarce items; sold as a set)
- 35 303. 7 1/2" U. S. Glass Cosmos and Cane Bowl with Headdress int. - Honey Amber (scarce)
304. 5" U. S. Glass Palm Beach ind. Berry Bowl with Gooseberry int. - White (scarce)
305. 9 1/2" TALL PHOENIX LACY DEWDROP COVERED COMPOTE - MARI./MILK GLASS (VERY RARE AND A VERY DESIRABLE ITEM)
- 105 306. 6 1/4" TALL PALM BEACH WHIMSEY SWUNG VASE - MARI./GOOFUS (VERY SCARCE AND DESIRABLE)
- 110 307. CAMBRIDGE INVERTED STRAWBERRY COVERED POWDER JAR - MARI. (VERY SCARCE IN THIS COLOR; NICE)
- 65 308. CAMBRIDGE INVERTED STRAWBERRY COVERED POWDER JAR - GREEN (SCARCE AND DESIRABLE)
- 225 309. CAMBRIDGE INVERTED FEATHER COVERED CRACKER JAR - GREEN (VERY RARE AND EXTREMELY DESIRABLE; GOOD COLOR AND QUALITY)

- 1300 310. M'BURG PEACOCK AT THE URN GIANT RUFFLED COMPOTE - GREEN (VERY RARE AND EXTREMELY DESIRABLE; GOOD COLOR AND QUALITY)
- 30 311. M'burg Peacock Tail Variant Ruffled Compote - Lt. Mari. (nice radium finish)
- 110 312. M'burg Boutonniere Stemmed Compote - Amy. (radium finish)
- 65 313. M'burg Boutonniere Stemmed Compote - Green (radium finish)
- 350 314. M'BURG LEAF AND LITTLE FLOWERS SMALL DEEP FLARED COMPOTE - MARI. (GOOD SATINY FINISH; VERY SCARCE AND DESIRABLE)
- 3400 315. M'BURG MITERED OVALS RUFFLED TOP VASE - GREEN (ABSOLUTELY SUPER AND VERY DESIRABLE; NOT TOO MANY SEEN ANYMORE - A KEY RARITY)
- 35 316. M'burg Hanging Cherry Tumbler - Green (damaged; small flake and has small hairline)
- 305 317. M'burg Diamond 5 pc. Water Set - Mari. (scarce set)
- 40 318. 8 1/2 - 9" M'burg Rays and Ribbons Deep Round Bowl - Green (good color)
- 40 319. 9" M'burg Rays and Ribbons Bowl with 3 In 1 Edge - Green (good satiny color)
- 1300 320. 7 1/2" M'BURG HANGING CHERRIES BOWL WITH A 3 IN 1 EDGE - BLUE (VERY RARE COLOR AND HAS NICE IRID.)
- 185 321. 10" M'burg Hanging Cherries Large Ice Cream Bowl - Amy. (good satiny irid.)
- 90 322. 10" M'burg Hanging Cherries Large Ice Cream Bowl - Mari. (good satiny irid.)
- 475 323. M'BURG SUNFLOWER PIN TRAY - GREEN (RARE AND DESIRABLE; HAS GOOD QUALITY)
324. M'BURG SEACOAST PIN TRAY - AMY. (RARE AND DESIRABLE; REALLY NICE)
- 800 325. M'BURG HOBSTAR AND FEATHER MASTER PUNCH BOWL, BASE AND 10 CUPS - MARI. (EXT. RARE AND DESIRABLE, GOOD COLOR; SMALL FLAKE OFF SIDE OF PEDESTAL BASE, TOP IS PERFECT)
- 40 326. 8 - 8 1/2" M'burg Holly Sprig Tri-Cornered Bowl - Amy. (scarce shape)
- 45 327. 8 - 8 1/2" M'burg Holly Sprig Ice Cream Shaped Bowl - Green (radium finish; good color)
- 35 328. 9" M'burg Holly Sprig Ice Cream Shaped Bowl - Green (nice item)
- 85 329. M'burg Holly Sprig Handled Card Tray with Is-sac Benesch Adv. - Mari. (scarce)
- 45 330. M'burg Holly Sprig One Handled Nappy - Green (good radium finish)
- 85 331. 10" M'burg Primrose Ruffled Bowl - Green (good satiny finish)
- 200 332. M'burg Strawberry Wreath Compote - Mari. (super radium finish on a scarce item)
- 170 333. 9 1/2" M'BURG COUNTRY KITCHEN EXT. RUFFLED BOWL - MARI. (VERY SCARCE ITEM; NICE)
- 70 334. 7 1/2" M'burg Little Stars Ruffled Bowl - Mari. (scarce; has radium finish)
- 210 335. 9" M'BURG LITTLE STARS BOWL WITH 3 IN 1 EDGE - GREEN (VERY RARE SIZE; HAS SILVERY/GOLD IRID.)
- 110 336. 7 3/4" M'burg Little Stars Ruffled Bowl - Green (scarce; has good radium finish)
- 45 337. 7 1/2 - 8" M'burg Blackberry Wreath Bowl with a 3 In 1 Edge - Amy. (super radium finish)
- 50 338. M'burg Holly Sprig Deep 2 Handled Bon Bon - Amy. (satiny finish)
- 45 339. 9 1/2" M'burg Whirling Leaves Ruffled Bowl - Amy. (good radium finish)
- 1500 340. 9 1/2 - 10" M'BURG WHIRLING LEAVES SQUARE DIAMOND SHAPED CRIMPED EDGE BOWL - MARI./VAS. (SCARCE SHAPE; SUPER RADIUM FINISH AND A VERY RARE COLOR)
- 90 341. 9 1/2" M'burg Fleur de Leis Ice Cream Shaped Bowl - Mari. (very scarce; has good radium finish)
- 55 342. 9 1/4" M'burg Fleur de Leis Deep Round Bowl - Mari. (scarce shape; good radium finish)
- 25 343. 9 1/2" M'burg Holly Whirl Ruffled Bowl - Mari. (satiny irid.)
- 60 344. 9" M'burg Holly Whirl Bowl with a 3 In 1 Edge - Mari. (good radium finish)
- 725 345. 9 1/2" M'BURG GRAPE LEAVES BOWL WITH A 3 IN 1 EDGE - AMY. (AN ABSOLUTELY SUPER EXAMPLE OF A VERY RARE AND DESIRABLE PATTERN)
- 825 346. 9 1/2" M'BURG FLEUR DE LEIS DEEP RUFFLED TIGHT CRIMPED EDGE BOWL - AMY. (SUPER, SUPER RADIUM FINISH AND NICE)
- 550 347. 9 1/4" M'BURG 6 POINTED MANY STARS RUFFLED BOWL - AMY. (SUPER, SUPER RADIUM FINISH; NICE)
- 190 348. 10" M'BURG 5 POINTED MANY STARS RUFFLED BOWL - AMY. (SUPER RADIUM FINISH; HAS A MANUF. OPEN HOLE ON IT)
- 105 349. 10 1/4" M'burg Rosiland Ruffled Bowl - Amy. (very nice color and irid.)
- 625 350. 8 3/4" M'BURG BIG FISH BOWL WITH A 3 IN 1 EDGE - AMY. (A RARE AND DESIRABLE PATTERN WITH GOOD SATINY FINISH)
- 500 351. 10 1/2" M'BURG PEACOCK AT THE URN BOWL WITH A 3 IN 1 EDGE - AMY. (VERY RARE SHAPE FOR THIS PATTERN; SUPER RADIUM)
- 225 352. 9 3/4" M'burg Peacock at the Urn Large Ice Cream Bowl - Amy. (very scarce; has good satiny irid.)
- 325 353. 9" M'burg Peacock at the Urn Ruffled Bowl - Amy. (nice radium finish; no beads and no bee)
- 50 354. 6" M'burg Peacock at the Urn Deep Sauce - Amy. (scarce; radium finish)

- 200 355. 9 1/2" M'BURG NESTING SWAN RUFFLED BOWL - AMY. (SCARCE WITH GOOD SATINY FINISH)
- 100 356. 10" M'burg Nesting Swan Ruffled Bowl - Amy. (scarce with good satiny finish)
- 165 357. 9 1/4" M'burg Nesting Swan Ruffled Bowl - Mari. (good color)
- 260 358. 10 1/2" M'burg Seaweed Bowl with 3 In 1 Bowl - Mari. (scarce pattern with good color and irid.)
- 150 359. M'BURG ROSES AND FRUIT 2 HANDLED RUFFLED BON BON - LT. MARI. (LIGHT COLOR ON A VERY RARE ITEM)
- 200 360. M'BURG TRACERY SQUARE 2 HANDLED BON BON - GREEN (VERY RARE; IRID. WORN ON INSIDE; MANUF. CHECK IN BASE)
- 425 361. 6 3/4" WIDE X 4 3/4" TALL M'BURG HOBNAIL JARDINIÈRE WHIMSEY - AMY. (ONE OF THREE I KNOW OF; DAMAGED [CRACKED] BUT SUPER AND RARE)
- 270 362. M'BURG HOBNAIL ROSE BOWL - PUR. (PERFECT WITH GOOD COLOR AND RARE)
- 70 363. M'burg Hobnail Rose Bowl - Mari./Clear (very scarce; has fair color and irid.)
- 80 364. M'burg Hobnail Spittoon - Pur. (very rare, but has an internal crack)
- 500 365. M'BURG HOBNAIL SWIRL SPITTOON - MARI. (RARE AND VERY DESIRABLE; HAS GOOD RICH COLOR)
- 85 366. 5 1/2" - 6" M'burg Strawberry Wreath ind. Ruffled Sauce - Green (good radium finish)
- 50 367. M'burg Hanging Cherries Covered Butter Dish - Amy. (scarce; damaged)
- 50 368. M'burg Hanging Cherries Covered Sugar Dish - Amy. (damaged)
- 15 369. M'burg Hanging Cherries Creamer - Amy. (damaged)
- 250 370. 8 3/4" WESTMORELAND CORINTH SWUNG VASE - BLUE OPAL. (SCARCE; SUPER OPAL. AND COLOR)
- 210 371. 8 1/2" WESTMORELAND CAROLINA DOGWOOD RUFFLED BOWL - BLUE OPAL. (VERY SCARCE; HAS SPOTTY IRID.)
- 70 372. 8 1/2" Westmoreland Smooth Rib Ruffled Bowl - Blue Opal. (scarce; has spotty irid.)
- 200 373. 5 1/2" WESTMORELAND HOBSTAR FRUIT RUFFLED BOWL - BLUE OPAL. (VERY SCARCE AND DESIRABLE IN THIS COLOR)
- 70 374. 5 1/2" WESTMORELAND HOBSTAR FRUIT 2 SIDED BANANA DISH - P. OPAL. (RARE SHAPE; HAS 2 MANUF. CHECKS ON BASE; ENAMELED SOUV. OF WISCONSIN)

- 400 375. 5 1/2" WESTMORELAND HOBSTAR FRUIT 2 SIDED BANANA DISH - MARI./MILK GLASS (VERY RARE; ONLY ONE IN THIS SHAPE I'VE SEEN)
- 300 376. 8 1/2" WESTMORELAND DAISY WREATH RUFFLED BOWL - BLUE OPAL. (VERY SCARCE AND HAS GOOD COLOR)
- 150 377. 8 1/2" WESTMORELAND CAROLINA DOGWOOD DEEP BOWL - MARI./MOONSTONE (VERY SCARCE AND DESIRABLE)
- 140 378. 8 1/2" Westmoreland Scales Ruffled Bowl - Lt. Mari./Milk Glass (scarce and desirable)
379. 4" Westmoreland Little Beads Domed Sauce - Lt. P. Opal. (scarce item)
- 45 380. Westmoreland File and Fan Stemmed Ruffled Compote - P. Opal. (scarce item)
- 25 381. 8 1/2" Westmoreland Smooth Rays Ruffled Bowl - Lt. P. Opal. (scarce color)
- 87 1/2 382. (2) Westmoreland Concave Flute Swung Vases - Teal/Aqua (scarce color; sold by the piece)
- 45 383. 8 1/4" Westmoreland Pillow and Sunburst Flat Plate - Amy. (very scarce item)
- 30 384. 9" Westmoreland Pearly Dots Flat Plate - Pur. (has silvery/gold irid.)
- 50 385. 8 1/2" Westmoreland Smooth Rays Plate - Amy.
- 25 386. Westmoreland Fishscale Finger Bowl and Underplate - Amy.
- 50x2 387. (2) Westmoreland Fruit Salad Punch Cups - Amy. (sold by the piece)
- 40 388. Westmoreland Orange Peel Punch Cup - Amy.
- 30x2 389. (2) Hatpins - Big Butterfly and Top Of The Walk - Pur. (sold separately)
- 40x2 390. European Covered Hen Butter Dish - Blue (scarce; has pretty good color)
- 50 391. Fenton Lotus and Grape 2 Handled Bon Bon - Custard With Red Stain (very scarce and has good decoration)
- 70 392. 8 1/2" Fenton Peacock and Dahlia Ruffled Bowl - Custard With Red Stain (very scarce and has good decoration)
- 20 393. Large Size Butterfly Pin Tray - Lt. Blue (odd item)
- 30x2
15x2 394. (4) Small Size Butterfly Pin Trays - Assorted Colors (very scarce items; sold separately)
- 10 395. 9" Fenton Thistle Ruffled Bowl - Non-Irid. Amy. (not iridized but very unusual)
- 50 396. 11" Fenton Stag and Holly Large ftd. Ruffled Bowl - Depression Green (not iridized)
- 25 397. 10" Fenton Lotus and Poinsettia Large ftd. Ruffled Bowl - Depression Green (not iridized)
- 12 1/2 398. New Fenton Persian Medallion Plate - Pur. (new)

