



## AUCTION SERVICE

### Carnival Glass, Victorian Pattern Glass Auction

Friday and Saturday,  
September 23 & 24, 1988

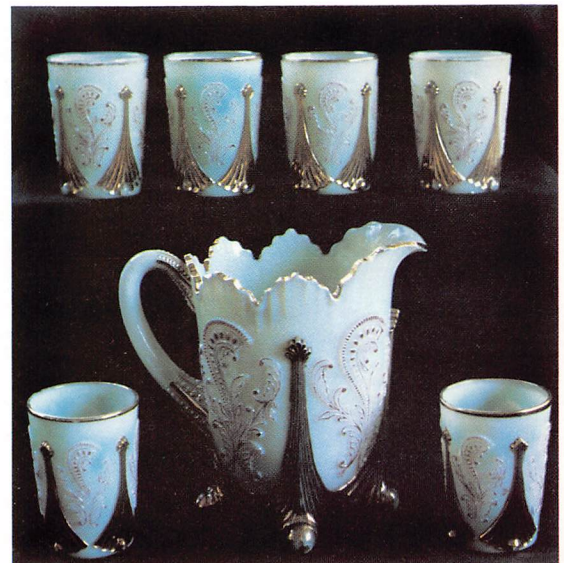
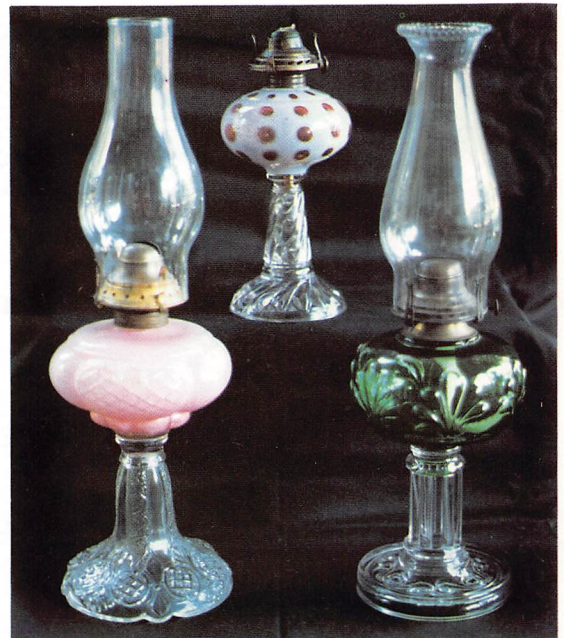
Carnival Glass - Friday, 6:30 pm,  
4:00 pm preview

Victorian Pattern Glass - Sat., 9:30 am,  
8:00 am preview at the

**Hudson - Holiday Inn**

(Cleveland area)

240 Hines Hill Rd., Hudson, Ohio 44236  
(216) 653-9191





Presented at auction is a large variety of glassware to be sold to the highest bidder. This glass has been purchased all across the country and assembled to form one of the better selections to be offered at auction this year. There will be over 200 lots of carnival glass auctioned Friday night, followed by over 200 lots of Victorian glass and related items on Saturday morning. It should make for an interesting event. Hope to see you there!

The Hudson - Holiday Inn will host the event. It's located just off Ohio Turnpike exit 12 on Route 8 on the southside of Cleveland. For reservation call the motel direct at (216) 653 - 9191 and be sure to mention Burns Auction Service.

Mail bids due by noon Thursday, September 22nd. Ohio sales tax in effect.

Mail Bids honored under the following conditions:

1. No deposit required. Bidders will take full responsibility to honor any and all bids we execute for them. Payment in full plus postage and handling required after notification and before we ship any item to them.
2. Items are bid on in perfect condition with average or above average iridescence OR as listed in the brochures. Bids will not be carried out when damage on an item has been found during the auction.
3. Successful bidders will be notified by collect call from the auctioneer (so be sure to include phone number).
4. Phone inquiries about the glass or any other questions are welcome.
5. All non-successful bids will receive a result summary in the mail. Results of all bids will be provided.
6. If you have some other person at the auction bidding for you, they must pay for the item before taking it.
7. Mail bids due by Noon Thursday, Sept. 22. **NO LATER, PLEASE!**

## Burns Auction Service

Tom Burns  
109 East Steuben Street  
Bath, New York 14810  
(607) 776-7942

Bill Richards  
44 Water Street  
Poland, Ohio 44514  
(216) 757-2001

- |   |  |
|---|--|
| <p>_____ 1. (2) Dugan Stork and Rushes Punch Cups - Mari.</p> <p>_____ 2. Imp. Flute Parfait Mug - Dk. Mari.</p> <p>_____ 3. Dugan Vintage Grape Wine Glass - Mari.</p> <p>_____ 4. (4) Imp. Fashion Punch Cups - Mari. (to be sold per each)</p> <p>_____ 5. <b>(2) IMP. 474 PUNCH CUPS - GREEN (ABSOLUTELY SUPER COLOR; SOLD PER EACH)</b></p> <p>_____ 6. Lea ftd. Creamer - Mari.</p> <p>_____ 7. N Flute Tumbler - Lt. Mari. (has manuf. ground base)</p> <p>_____ 8. Fenton Orange Tree Goblet - Mari.</p> <p>_____ 9. Fenton Orange Tree Flared Goblet - Mari.</p> <p>_____ 10. (2) Fenton Milady Tumblers - Mari. (to be sold separately)</p> <p>_____ 11. Imp. Grape Tumbler - Pur. (super color)</p> <p>_____ 12. Fenton Blueberry Tumbler - Blue (scarce)</p> <p>_____ 13. <b>N STIPPLED SINGING BIRD MUG - DK. MARI. (VERY RARE; GOOD DARK COLOR)</b></p> <p>_____ 14. (2) N Singing Bird Mugs - Mari. (sold separately)</p> <p>_____ 15. <b>FENTON KITTENS TOOTHPICK HOLDER - BLUE (RARE AND VERY COLLECTIBLE)</b></p> <p>_____ 16. <b>FENTON KITTENS CUP - MARI. (GOOD DETAIL AND COLOR)</b></p> <p>_____ 17. <b>FENTON KITTENS 4 SIDED BOWL - MARI. (SCARCE)</b></p> <p>_____ 18. Panelled Apple Breakfast Sugar and Creamer - Mari.</p> <p>_____ 19. Imp. Star and File Creamer - Mari.</p> <p>_____ 20. N G &amp; C Covered Butter Dish - Pur.</p> <p>_____ 21. N G &amp; C Table Set, Creamer only - Pur.</p> | <p>_____ 22. N G &amp; C Table Set, Spooner only - Pur.</p> <p>_____ 23. Fenton Orange Tree Open Breakfast Sugar only - White</p> <p>_____ 24. Imp. Lustre Rose Creamer - Mari.</p> <p>_____ 25. M'burg Hanging Cherry Covered Sugar - Mari.</p> <p>_____ 26. M'burg Hanging Cherry Creamer - Mari.</p> <p>_____ 27. Westmoreland Strutting Peacock Covered Sugar and Creamer - Amy.</p> <p>_____ 28. N Lustre Flute Creamer - Green</p> <p>_____ 29. Dugan Wreath of Roses Rose Bowl - Amy. (super and very desirable)</p> <p>_____ 30. <b>N DRAPERY ROSE BOWL - AQUA OPAL. (VERY NICE EXAMPLE WITH GOOD COLOR)</b></p> <p>_____ 31. <b>N BEADED CABLE FTD. ROSE BOWL - WHITE (VERY RARE AND DESIRABLE; NICE)</b></p> <p>_____ 32. <b>N BEADED CABLE FTD. ROSE BOWL - ELEC. BLUE (SUPER)</b></p> <p>_____ 33. N Fine Cut and Roses ftd. Rose Bowl - Pur. (flake on top rim)</p> <p>_____ 34. N Fine Cut and Roses ftd. Rose Bowl - Pur. (damaged feet)</p> <p>_____ 35. <b>FENTON FLOWERS FTD. ROSE BOWL - WHITE (VERY RARE AND DESIRABLE; HAS PERFECT FEET)</b></p> <p>_____ 36. Imp. Smooth Rib Rose Bowl - Mari.</p> <p>_____ 37. N Heart and Flowers Stemmed Compote - Mari. (flake under base)</p> <p>_____ 38. Fenton Blackberry Stemmed Compote - Amy.</p> <p>_____ 39. Fenton Blackberry Stemmed Compote - Green</p> <p>_____ 40. <b>FENTON CAPTIVE ROSE STEMMED COMPOTE - WHITE (VERY RARE PATTERN WITH SUPER COLOR)</b></p> |
|---|--|



- \_\_\_\_\_ 41. Fenton Persian Medallion Stemmed Compote - Blue (scarce)
- \_\_\_\_\_ 42. Fenton Birds and Cherries Stemmed Compote - Green (very scarce)
- \_\_\_\_\_ 43. Fenton Birds and Cherries Stemmed Compote - Amy. (scarce)
- \_\_\_\_\_ 44. **DUGAN CONSTELLATION STEMMED COMPOTE - WHITE (SCARCE)**
- \_\_\_\_\_ 45. **FENTON MIKADO LG. ICE CREAM SHAPED COMPOTE - BLUE (SCARCE COLOR AND A VERY RARE SHAPE)**
- \_\_\_\_\_ 46. **FENTON MIKADO RUFFLED COMPOTE - MARI. (GOOD DARK COLOR)**
- \_\_\_\_\_ 47. Fenton Smooth Rib Pinched In Ruffled Stemmed Compote - Mari.
- \_\_\_\_\_ 48. Dugan Thumbprint Compote - P. Opal.
- \_\_\_\_\_ 49. Dugan Question Mark 2 Handled Stemmed Bon Bon - P. Opal. (very nice)
- \_\_\_\_\_ 50. Dugan Panelled Cherries 3 ftd. Ruffled Bowl - P. Opal. (very nice)
- \_\_\_\_\_ 51. Dugan Dogwood Sprays Domed ftd. Deep Compote Shaped Bowl - P. Opal.
- \_\_\_\_\_ 52. Dugan Six Petals Ruffled Bowl - P. Opal.
- \_\_\_\_\_ 53. Dugan Single Flower Framed Flared Out Low Ruffled Bowl - P. Opal.
- \_\_\_\_\_ 54. **PHOENIX LACY DEWDROP TUMBLER - MARI. / MILK GLASS (VERY RARE; HAS FLAT FLAKE OFF BASE; NICE COLOR)**
- \_\_\_\_\_ 55. **DUGAN APPLE BLOSSOM TWIG FLAT PLATE - P. OPAL. (VERY RARE; GOOD COLOR AND GOOD OPAL.)**
- \_\_\_\_\_ 56. **DUGAN ROUND UP FLAT PLATE - BLUE (AVERAGE COLOR AND VERY FLAT)**
- \_\_\_\_\_ 57. 9" Imp. Open Rose Flat Plate - Mari.
- \_\_\_\_\_ 58. 7 1/2"-8" Imp. Heavy Grape Flat Plate - Helios Green
- \_\_\_\_\_ 59. 7 1/2"-8" Imp. Heavy Grape Flat Plate - Mari.
- \_\_\_\_\_ 60. **N ROSE SHOW PLATE - ELEC. BLUE (SUPER COLOR ON A RARE AND DESIRABLE ITEM)**
- \_\_\_\_\_ 61. **N STIPPLED THREE FRUITS PLATE - ELEC. BLUE (SCARCE AND DESIRABLE; HAS GOOD COLOR)**
- \_\_\_\_\_ 62. **N STIPPLED THREE FRUITS PLATE - PUR. (SCARCE WITH GOOD COLOR)**
- \_\_\_\_\_ 63. N Three Fruits Plate with Basketweave Ext. - Amy.
- \_\_\_\_\_ 64. N Three Fruits Plate with Basketweave Ext. - Green (scarce)
- \_\_\_\_\_ 65. N Strawberry Plate with Basketweave Ext. - Green
- \_\_\_\_\_ 66. Fenton G & C Spatula ftd. Plate - Green
- \_\_\_\_\_ 67. **FENTON HOLLY PLATE - WHITE (GOOD IRID. AND QUITE SCARCE)**
- \_\_\_\_\_ 68. **IMP. EMBOSSED SCROLL PLATE - PUR. (SCARCE)**
- \_\_\_\_\_ 69. (2) N Peacock at the Urn Ind. Sauces - Pur.
- \_\_\_\_\_ 70. **N PEACOCKS BOWL WITH PIE CRUST EDGE - AMY./ HONEY AMBER SMOKE (ODD COLOR WITH BEAUTIFUL IRID. - A SUPER ITEM)**
- \_\_\_\_\_ 71. **N PEACOCKS PLATE - WHITE (GOOD FROSTY COLOR AND VERY NICE)**
- \_\_\_\_\_ 72. N Peacocks Ruffled Bowl - Pur. (damaged on edge - nice shelf piece)
- \_\_\_\_\_ 73. N Fruits and Flowers Stemmed Bon Bon - Pur.
- \_\_\_\_\_ 74. N Fruits and Flowers Stemmed Bon Bon - Blue
- \_\_\_\_\_ 75. **FENTON TWO FRUITS SQUARE HANDLED BON BON - BLUE (SCARCE PATTERN AND SHAPE)**
- \_\_\_\_\_ 76. Fenton Pond Lily 2 Handled Bon Bon - 2 sides up - Blue
- \_\_\_\_\_ 77. Fenton Butterflies 2 Handled Bon Bon - Blue
- \_\_\_\_\_ 78. Fenton Butterflies 2 Handled Bon Bon - Green
- \_\_\_\_\_ 79. Fenton Butterflies 2 Handled Bon Bon - Mari.
- \_\_\_\_\_ 80. Fenton Strawberry 2 Handled Bon Bon - Mari.
- \_\_\_\_\_ 81. Fenton Persian Medallion 2 Handled Bon Bon - Amy. (very scarce color)
- \_\_\_\_\_ 82. Fenton Stippled Rays 2 Handled Bon Bon - Amy.
- \_\_\_\_\_ 83. Fenton Peacock Tails 2 Handled Bon Bon - 2 sides up - Amy.
- \_\_\_\_\_ 84. Imp. Star and File Large Round 2 Handled Candy Dish - Mari.
- \_\_\_\_\_ 85. Imp. Star and File Domed Relish Tray - Mari.
- \_\_\_\_\_ 86. Imperial Star Medallion Flared Squatty Compote - Mari.
- \_\_\_\_\_ 87. 8" Imp. Star Medallion Flared Round Bowl - Smoke
- \_\_\_\_\_ 88. 9" Imp. Star of David Ruffled Bowl - Pur. (super color)
- \_\_\_\_\_ 89. 9" Imp. Star of David Ruffled Bowl - Helios Green
- \_\_\_\_\_ 90. **IMP. POINSETTIA MILK PITCHER - SMOKE (RARE AND HAS SUPER COLOR AND IRID.)**
- \_\_\_\_\_ 91. 9" Imp. Embossed Scroll Ruffled Master Berry Bowl with File Ext. - Amy. (an unusual color with good multi-irid.)
- \_\_\_\_\_ 92. 8 1/2" Imp. Acanthus Deep Round Bowl - Pur. (scarce, pinhead on edge)
- \_\_\_\_\_ 93. Imp. Diamond Lace Water Pitcher - Pur.
- \_\_\_\_\_ 94. Imp. Near Cut Type Patterned Bowl - Green
- \_\_\_\_\_ 95. **13 1/4" IMP. RIPPLE SWUNG VASE - AQUA / TEAL (SWUNG MORE THAN MOST; GOOD PASTEL COLOR)**
- \_\_\_\_\_ 96. 7" Imp. Miniature Morning Glory Swung Vase - Smoke (scarce with good color - has blue tint)
- \_\_\_\_\_ 97. 8 1/2" Fenton Butterfly and Berry Swung Vase - Blue (small smoothed area on base)
- \_\_\_\_\_ 98. 8 3/4" Fenton Butterfly and Berry Swung Vase - Mari.
- \_\_\_\_\_ 99. Dugan Mary Ann Handled Vase - Mari.
- \_\_\_\_\_ 100. **N DAISY AND DRAPE FTD. VASE - BLUE (SILVERY; BUT ATTRACTIVE AND VERY SCARCE)**
- \_\_\_\_\_ 101. **8 3/4" N DRAPERY SWUNG VASE - AQUA OPAL. (SUPER RARE AND DESIRABLE; MINOR ROUGHNESS)**
- \_\_\_\_\_ 102. 7 3/4" N Drapery Swung Vase - Ice Blue (scarce; minor roughness on feet)
- \_\_\_\_\_ 103. 8" N Drapery Variant Swung Vase - Teal Blue (very scarce but damaged on base)



104. 10 3/4" N FINE RIB SWUNG VASE - ODD GREEN/ MARI. (VERY UNUSUAL COLOR AND NICE)
105. 14" N THIN RIB MID SIZE FUNERAL VASE - ICE GREEN (VERY UNUSUAL AND TOUGH TO FIND)
106. 13 1/2" N THIN RIB MID SIZE FUNERAL VASE - WHITE (SCARCE COLOR AND DESIRABLE)
107. 12" N Thin Rib Mid Size Funeral Vase - Emerald Green (good color)
108. 13 1/2" N Thin Rib Mid Size Funeral Vase - Mari.
109. 13 1/2" N Thin Rib Mid Size Funeral Vase - Coral Red-Slag (unusual color; not irid.)
110. 13 1/4" N Thin Rib Mid Size Funeral Vase - Jade Green (not irid.)
111. 7" N THIN RIB SQUATTY FLARED VASE - AQUA /TEAL (SUPER ODD COLOR AND VERY RARE)
112. 9 1/4" Dugan Twig Bud Vase - Lt. Mari.
113. 7" Dugan Bellflower Ruffled Bowl - Pur. (good irid.)
114. 5 1/2" Dugan Wishbone and Spades Deep Ruffled Sauce - Pur.
115. 11 1/4" DUGAN PERSIAN GARDEN LARGE ICE CREAM BOWL - WHITE (SCARCE WITH GOOD COLOR; NICE)
116. 5 3/4" Dugan Persian Garden Ind. Ice Cream Bowl - White
117. 6 3/4" Dugan Lined Lattice Low Ruffled Bowl - White
118. Dugan Cherry Wreath Large Master Berry Bowl - White (good color; large damage on edge)
119. Dugan Grape Delight 6 ftd. Rose Bowl - Pur. (damaged feet)
120. DUGAN DOUBLE STEM ROSE DOMED FTD. RUFFLED BOWL - CELESTE BLUE (SUPER, SUPER COLOR AND IRID; VERY DESIRABLE)
121. 9" Dugan Vintage Grape Domed ftd. Ruffled Bowl - Dk. Mari. (good color; very scarce pattern)
122. CAMBRIDGE INVERTED FEATHER COVERED CRACKER JAR - GREEN (VERY SCARCE; HAS SILVERY BASE; NICE)
123. 5 3/4" M'burg Blackberry Wreath Ind. Sauce with Tight Crimped Edge - Mari. (radium finish)
124. 6" M'burg Cosmos Low Ice Cream Shaped Bowl - Green (super radium finish)
125. M'BURG SUNFLOWER PIN TRAY - GREEN (VERY DESIRABLE AND RARE; PINHEAD FLAKE ON ONE POINT)
126. 8 1/2" M'burg Little Stars Ruffled Bowl - Amy. (super nice)
127. 8" M'burg Hanging Cherries Low Ice Cream Shaped Bowl - Mari.
128. 8" M'burg Holly Sprig Ruffled Bowl - Amy. (radium finish)
129. DUGAN 5 HEARTS DOMED FTD. RUFFLED BOWL - DK. MARI. (VERY RARE PATTERN WITH GOOD COLOR)
130. DUGAN DAISY WEB RUFFLED JACK IN PULPIT HAT - PUR. (VERY RARE PATTERN AND VERY GOOD COLOR)
131. 6" Dugan Cherries Low Ruffled Sauce with Jeweled Heart Ext. - Pur.
132. Dugan Leaf Ray Nappy - White
133. Dugan Many Fruits Flared Punch Bowl and Base - Mari. (flake on inside of bowl)
134. Tri Cornered Concave Diamond Stretch Bulbous Vase - Celeste Blue (scarce item)
135. 6 1/4"-6 1/2" Fenton Stretch Stippled Rays Ice Cream Shaped Compote - Pink Stretch (very scarce item and scarce color)
136. 7 3/4" Wide Panel Stretch Plate - Red (a beaut)
137. Large Northwood 1/2 lb. Stretch Panelled Covered Jar - Blue Opaque (very scarce and very desirable)
138. Lot - 4 Imp. pieces (Imp. Grape Basket - damaged, Rays Plate, Imp. Grape Cookie Tray, Near Cut Bowl) - Mari.
139. Imp. Broken Arches Punch Cup - Pur. (super color and quality)
140. N WIDE PANEL 4 LILY EPERGNE - GREEN (ONE SIDE LILY HAS FLAKE ON BASE; VERY RARE UNUSUAL GREEN TINGE; CENTER LILY IS ROUND)
141. N Wide Panel Side Lily Only - Ice Blue (rare if you need it)
142. N Wide Panel Epergne Base Only - Pur. (has some damage; but rare to find)
143. N Wishbone Low Ruffled ftd. Bowl - Mari.
144. N Wishbone Deep Ruffled ftd. Bowl - Pur.
145. N HEART AND FLOWERS RUFFLED BOWL - ICE GREEN (RARE WITH SUPER COLOR AND PERFECT)
146. N HEART AND FLOWERS RUFFLED BOWL WITH PIE CRUST EDGE - BLUE (A BEAUTIFUL SHAPE ON A SILVERISH IRID. WITH ORIGINAL GOOFUS GOLD TRIM)
147. N GOOD LUCK BOWL WITH PIE CRUST EDGE - ELEC. BLUE
148. N RASPBERRY MILK PITCHER - PUR. (SUPER COLOR AND QUALITY - QUITE SCARCE)
149. N MEMPHIS SMALL SIZE 7 PC. PUNCH SET - PUR. (SCARCE AND DESIRABLE)
150. FOOTED ORANGE TREE WATER PITCHER - ICE GREEN (DAMAGED, BUT A ONE OF A KIND THAT DESERVES SPECIAL NOTICE!)
151. Dugan Windflower handled Nappy - Ice Green (rare; has stretch effect and a couple flakes on edge)
152. 9" Fenton Peacock at the Urn Ruffled Bowl - Mari. (good rich color)
153. 8" Fenton Lions Ice Cream Shaped Bowl - Mari. (scarce pattern and shape)
154. (2) Fenton Panther Ind. Ruffled ftd. Berry Bowls - Mari. (sold separately)
155. FENTON PANTHER FTD. MASTER BERRY BOWL - BLUE (VERY RARE ITEM AND HAS SUPER COLOR)



- \_\_\_\_\_ 156. Fenton Horsehead Medallion ftd. Jack in the Pulpit Bowl - Mari.
- \_\_\_\_\_ 157. 13" Fenton Stag and Holly ftd. Ice Cream Shaped Bowl - Blue
- \_\_\_\_\_ 158. 13" Fenton Stag and Holly ftd. Ice Cream Shaped Bowl - Mari. (has odd amberish tint to base)
- \_\_\_\_\_ 159. 13" Fenton Stag and Holly ftd. Ice Cream Shaped Bowl - Mari.
- \_\_\_\_\_ 160. 12" Fenton Stag and Holly ftd. Ruffled Bowl - Blue
- \_\_\_\_\_ 161. 8 1/2" Fenton Stag and Holly Spatula ftd. Ruffled Bowl - Blue (small rough flake on edge)
- \_\_\_\_\_ 162. 8 1/2" Fenton Stag and Holly Spatula ftd. Ruffled Bowl - Mari.
- \_\_\_\_\_ 163. 9 1/2" Fenton Two Flowers Deep Ruffled Ball ftd. Bowl - Blue (scarce with super color)
- \_\_\_\_\_ 164. 13" Fenton Two Flowers Ice Cream Shaped ftd. Bowl - Mari.
- \_\_\_\_\_ 165. 12" Fenton Two Flowers ftd. Ruffled Bowl - Mari.
- \_\_\_\_\_ 166. 5 1/2" Fenton Vintage Grape Ruffled Sauce - Amy.
- \_\_\_\_\_ 167. 5 1/2"-6" Fenton Lotus and Grape ftd. Ruffled Bowl - Mari.
- \_\_\_\_\_ 168. 8 1/2-9" Fenton Dragon and Lotus Ruffled Bowl - Amy. (scarce color)
- \_\_\_\_\_ 169. 5 1/2-6" Fenton Lotus and Poinsetta ftd. Ruffled Sauce - Blue
- \_\_\_\_\_ 170. **FENTON ROSE WREATH PUNCH BOWL, BASE AND 6 CUPS WITH VINTAGE INT. - GREEN (SCARCE COLOR ON A SCARCE ITEM)**
- \_\_\_\_\_ 171. **FENTON THISTLE FTD. BANANA BOAT - AMY. (SUPER COLOR ON A SCARCE ITEM)**
- \_\_\_\_\_ 172. 8 1/2" Fenton Holly Ice Cream Shaped Bowl - Blue
- \_\_\_\_\_ 173. 9" Fenton Holly Ruffled Bowl - Mari.
- \_\_\_\_\_ 174. Fenton Peacock Tail Ruffled Hat - Amy.
- \_\_\_\_\_ 175. **FENTON BUTTERFLY AND FERN WATER PITCHER - AMY. (VERY SCARCE AND DESIRABLE; TOUGH TO FIND)**
- \_\_\_\_\_ 176. Fenton Wreath of Roses 2 Handled Bon Bon - Mari.
- \_\_\_\_\_ 177. 7 - 7 1/2" Fenton Peacock Tail Ruffled Bowl with Horfacher Advertisement - Green (scarce)
- \_\_\_\_\_ 178. 9" Fenton Thistle Ruffled Bowl - Green
- \_\_\_\_\_ 179. 8 1/2" Fenton Thistle Ice Cream Shaped Bowl - Amy.
- \_\_\_\_\_ 180. **8" FENTON CONCORD GRAPE DEEP ROUND BOWL WITH TIGHT CRIMPED EDGE - MARI. (VERY SCARCE AND HAS SUPER COLOR)**
- \_\_\_\_\_ 181. Fenton Blackberry 2 Row Open Edge Ruffled Hat - Blue
- \_\_\_\_\_ 182. 8 1/2" Fenton Acorn Ruffled Bowl - Mari.
- \_\_\_\_\_ 183. 8 1/2" Westmoreland Coin Spot Deep Round Bowl - Amy.
- \_\_\_\_\_ 184. Nuart Plain Panelled Shade - Mari.
- \_\_\_\_\_ 185. Fenton Florentine Candlestick - Mari.
- \_\_\_\_\_ 186. (2) Pc. Lot - Stippled Rays domed Bowl and Apple Blossom Bowl - Mari.

- \_\_\_\_\_ 187. N Scales Stemmed Compote - Mari.
- \_\_\_\_\_ 188. Fenton Stippled Rays Flared Handled Sugar - Amber (rare color)
- \_\_\_\_\_ 189. Imp. Octagon Goblet - Mari.
- \_\_\_\_\_ 190. Imp. Robin Mug - Dk. Mari.
- \_\_\_\_\_ 191. Imp. Diamond Lace Tumbler - Pur. (super color; pinhead)
- \_\_\_\_\_ 192. Imp. 474 Tumbler - Mari.
- \_\_\_\_\_ 193. N G & C with Thumbprint Tumbler - Pur. (nice color)
- \_\_\_\_\_ 194. "Billy Baxter - His Clear Bottle" Ashtray - Mari. (tiny flake; scarce)
- \_\_\_\_\_ 195. 3 Hatpins - Fabric Scarab, Cattails and Blue Rooster - Dark ( to be sold separately)
- \_\_\_\_\_ 196. Imp. Diamond and Sunburst Wine Decanter with New Stopper - Mari.
- \_\_\_\_\_ 197. Imp. Flute Tankard Tumbler - Lt. Mari.
- \_\_\_\_\_ 198. Imp. Octagon Wine Glass - Dk. Mari.
- \_\_\_\_\_ 199. Fenton Peacock Tail Compote - Green
- \_\_\_\_\_ 200. Lot 3 Damaged Pieces

#### EXTRA ITEMS

- \_\_\_\_\_ 1. **FENTON PERSIAN MEDALLION ROSE BOWL - AMY. (VERY RARE COLOR)**
- \_\_\_\_\_ 2. **7 1/2 - 8" FENTON VINTAGE GRAPE PLATE - GREEN (SCARCE WITH GOOD COLOR)**
- \_\_\_\_\_ 3. **N LEAF AND BEADS FTD. ROSE BOWL - AQUA OPAL. (SUPER NICE CONDITION WITH GOOD IRID. AND OPAL.)**
- \_\_\_\_\_ 4. Imp. Embossed Scroll Ruffled Bowl - Pur. (absolutely super color)
- \_\_\_\_\_ 5. M'burg Seacoast Pin Tray - Amy. (good color and detail; very desirable but has flake replaced on underside)

#### START OF SECOND SESSION

- \_\_\_\_\_ 201. (3) 9" Depression Cherry Blossom Plates - Pink
- \_\_\_\_\_ 202. (2) Salt Dips, Signed Germany
- \_\_\_\_\_ 203. Large Black Swan Dish
- \_\_\_\_\_ 204. Small Fenton Mellon Rib Fan Vase - Mandarin Red
- \_\_\_\_\_ 205. **LG. ERICKSON CENTERPIECE ON CONTROLLED BUBBLE PAPERWEIGHT BASE - GREEN (VERY COLLECTIBLE)**
- \_\_\_\_\_ 206. Opalescent Windows Spooner - Blue Opal.
- \_\_\_\_\_ 207. Opalescent Windows Tumbler - Blue Opal.
- \_\_\_\_\_ 208. Small Satin Glass Rose Bowl - Blue
- \_\_\_\_\_ 209. Ribbed Pillar Tumbler - Pink Spatter
- \_\_\_\_\_ 210. 9" Dugan Clubs & Spades Vase - Green with Silver
- \_\_\_\_\_ 211. Hobb's Gonterman Swirl Ind. Berry Bowl - Amber/Opal. (very scarce)
- \_\_\_\_\_ 212. Hobb's Gonterman Swirl Ind. Berry Bowl - Blue/Frosted (scarce)
- \_\_\_\_\_ 213. Coin Spot Spooner - Amber
- \_\_\_\_\_ 214. Pre-1900 Rookwood Standard Giazze Saucer with Flowers - Brown



- \_\_\_\_\_ 215. **NORTHWOOD EVERGLADES MASTER BERRY BOWL - BLUE OPAL. WITH GOLD**
- \_\_\_\_\_ 216. Northwood Intagilo Table Creamer - Blue Opal.
- \_\_\_\_\_ 217. Northwood Chrysanthemum Base Swirl Celery Vase - Blue Opal.
- \_\_\_\_\_ 218. Holly/Beaded Ovals and Sand Spooner - Blue Opal.
- \_\_\_\_\_ 219. Hobnail and Thumbprint Table Creamer, Spooner and Sugar Base - Blue Opal. (sold as set)
- \_\_\_\_\_ 220. **N POINSETTA FROSTED TANKARD WATER PITCHER - BLUE OPAL (VERY RARE AND UNUSUAL; HAS FROSTED HANDLE)**
- \_\_\_\_\_ 221. **N POINSETTA TANKARD WATER PITCHER - BLUE OPAL (SUPER OPAL. - AND A BIT SMALLER THAN THE PREVIOUS ITEM)**
- \_\_\_\_\_ 222. **SEAWEED BULBOUS TIGHT CRIMPED TRI CORNERED TOP PITCHER - BLUE OPAL. (SUPER DESIRABLE PIECE AND GETTING TOUGH TO FIND)**
- \_\_\_\_\_ 223. N Regal Stemmed Jelly Compote - Blue Opal. (scarce)
- \_\_\_\_\_ 224. **NORTHWOOD ALASKA RELISH TRAY - BLUE OPAL. (VERY SCARCE)**
- \_\_\_\_\_ 225. **NORTHWOOD ALASKA DECORATED RELISH TRAY - VAS. OPAL. (A SUPER DESIRABLE ITEM WITH GOOD DECOR)**
- \_\_\_\_\_ 226. **N POINSETTA AND LATTICE FTD. RUFFLED BOWL - VAS. OPAL. (SUPER RARE AND SUPER DESIRABLE; ONLY ONE I'VE HEARD OF)**
- \_\_\_\_\_ 227. **N BEADED CABLE FTD. ROSE BOWL - VAS. OPAL. (SUPER RARE AND SUPER DESIRABLE; ONLY ONE KNOWN)**
- \_\_\_\_\_ 228. Jefferson Iris and Meander 7 pc. Water Set - Blue Opal. (scarce, but pitcher is cracked)
- \_\_\_\_\_ 229. Jefferson Iris and Meander Stemmed Jelly Compote - Blue Opal. (very scarce)
- \_\_\_\_\_ 230. Jefferson Iris and Meander Stemmed Jelly Compote - Vas. Opal. (very scarce)
- \_\_\_\_\_ 231. Northwood Scroll with Acanthus Stemmed Jelly Compote - Dk. Blue Opal. (odd color)
- \_\_\_\_\_ 232. Northwood (?) Ivy Scroll Stemmed Jelly Compote - Apple Green (scarce)
- \_\_\_\_\_ 233. Northwood Wild Bouquet Stemmed Jelly Compote - Clear Opal. (scarce; has some original enameling)
- \_\_\_\_\_ 234. Northwood Wild Bouquet Spooner - Lime/Green Opal. (scarce; has yellow tint)
- \_\_\_\_\_ 235. **NORTHWOOD WILD BOUQUET SPOONER - CUSTARD (VERY SCARCE AND HAS SUPER DECOR)**
- \_\_\_\_\_ 236. Northwood Wild Bouquet Spooner - Custard (scarce; has no decor)
- \_\_\_\_\_ 237. N Bushel Basket - Custard/Nutmeg
- \_\_\_\_\_ 238. Northwood Grape and Gothic Arches Tumbler - Custard with Nutmeg
- \_\_\_\_\_ 239. Northwood Argonaut Shell Covered Sugar - Custard with Decor (nice; shell finial damaged at the factory but has original gold over it)
- \_\_\_\_\_ 240. **N INVERTED FAN AND FEATHER 7 PC. WATER SET - CUSTARD WITH DECOR (ABSOLUTELY SUPER DECOR FOR A SUPER SET AND PERFECT)**
- \_\_\_\_\_ 241. 4 1/2" Flared Beauty Bud Vase - Clear Opal.
- \_\_\_\_\_ 242. (4) N Interior Poinsetta Tumblers - Green Opal. (to be sold per each)
- \_\_\_\_\_ 243. 4 1/2" Floral Sauce with Rabbit and "Easter Greeting" Depiction - Goofus Gold (very scarce item with excellent gold)
- \_\_\_\_\_ 244. 6" Tall x 6 1/2" Long Imp. Candlewick Handled Basket - Crystal
- \_\_\_\_\_ 245. **PASTEL SWAN - VAS. OPAL (SUPER SCARCE AND DESIRABLE, I'VE ONLY SEEN A COUPLE - NOT IRID., BUT BEAUTIFUL)**
- \_\_\_\_\_ 246. Pastel Swan - Celeste Blue (good color)
- \_\_\_\_\_ 247. Large Fenton Stretch Mellon Rib Fan Vase - Celeste Blue (nice)
- \_\_\_\_\_ 248. Small Stretch Panelled Int. Fan Vase - Vaseline
- \_\_\_\_\_ 249. **FENTON STRETCH PUNCH BOWL ON BLACK AMY. BASE - ICE GREEN (VERY SCARCE AND DESIRABLE)**
- \_\_\_\_\_ 250. **NORTHWOOD PRETTY PANELS 8 PC. COVERED WATER SET - ICE GREEN (VERY RARE AND EXTREMELY DESIRABLE)**
- \_\_\_\_\_ 251. Old Man Winter Large Handled Basket - Green Opal. (scarce and very desirable)
- \_\_\_\_\_ 252. Iris and Meander Large Master Berry Bowl - Green Opal. (nice)
- \_\_\_\_\_ 253. **STORK AND RUSHES MUG WITH LATTICE BAND - BLUE OPAL. (VERY RARE AND UNUSUAL; NICE)**
- \_\_\_\_\_ 254. Dolly Madison Covered Sugar Bowl - Apple Green with Gold
- \_\_\_\_\_ 255. **14" PHOENIX DIVING LADIES OVAL CONSOLE BOWL - BLUE/MILK GLASS (VERY DESIRABLE; NICE KEY ITEM)**
- \_\_\_\_\_ 256. **PHOENIX WILD GEESE LARGE PILLOW VASE - BROWN/MILK GLASS (VERY DESIRABLE PATTERN; TOUGH TO FIND)**
- \_\_\_\_\_ 257. Phoenix Cosmos Vase - White with Lustre (nice color)
- \_\_\_\_\_ 258. Phoenix Starflower Vase - Green with Lustre on Milk (nice and desirable; good color)
- \_\_\_\_\_ 259. Phoenix Bellflower Trumpet Vase - White with Lustre (nice color)
- \_\_\_\_\_ 260. 11 1/2" Phoenix Philadendron Vase - Lite Tan with Irid. (scarce with good color; has original label)
- \_\_\_\_\_ 261. 7" Phoenix Fern Vase - Lite Tan with Irid. (good lustre)
- \_\_\_\_\_ 262. 10 1/2" Phoenix Wild Rose Vase - Dk. Red with Lustre (scarce with good color; with original label)
- \_\_\_\_\_ 263. 6 3/4" Phoenix Floral Covered Candy Box - Milk Glass with Lustre (scarce item)
- \_\_\_\_\_ 264. Consolidated Dogwood Vase - Tri-Colored Yellow, Green and Brown (nice color)



- \_\_\_\_\_ 265. **CONSOLIDATED SEAGULLS LARGE PILLOW VASE - LITE BLUE ON WHITE WITH TRIM (VERY SCARCE AND UNUSUAL)**
- \_\_\_\_\_ 266. Phoenix Alpine Thistle Small Pillow Vase - Red on White (good color)
- \_\_\_\_\_ 267. Phoenix Alpine Thistle Small Pillow Vase - Light Blue on White (good color)
- \_\_\_\_\_ 268. Pair Consolidated Catalonian Squatty Candlesticks - Amy. (scarce)
- \_\_\_\_\_ 269. Phoenix type Vase with Shriner's Commandry - Lt. Tan on White (unusual; small flake on top edge)
- \_\_\_\_\_ 270. **10 1/2" TORTOISE SHELL TANKARD WATER PITCHER (RARE; POLISHED PONTIL)**
- \_\_\_\_\_ 271. **12 1/2" TORTOISE SHELL TALL SQUARE VASE (RARE, UNUSUAL; POLISHED PONTIL)**
- \_\_\_\_\_ 272. **11" TORTOISE SHELL LG. CONSOLE BOWL (NICE; WITH POLISHED PONTIL)**
- \_\_\_\_\_ 273. **ADMIRAL DEWEY MILK GLASS COVERED BOAT WITH MOST OF THE ORIGINAL PAINT (SCARCE)**
- \_\_\_\_\_ 274. 11" Ruffled Spanish Lace Brides Basket - Clear Opal.
- \_\_\_\_\_ 275. **NORTHWOOD SHELL (BEADED SHELL) TOOTHPICK HOLDER - APPLE GREEN WITH GOLD (VERY RARE AND DESIRABLE; HAS GOOD GOLD - AN EXCELLENT EXAMPLE)**
- \_\_\_\_\_ 276. **BEADED OVAL & SAND TOOTHPICK HOLDER - LIGHT APPLE GREEN (VERY RARE AND DESIRABLE; TOUGH TO FIND)**
- \_\_\_\_\_ 277. **NESTOR TOOTHPICK WITH ENAMEL DECORATION - APPLE GREEN (VERY SCARCE)**
- \_\_\_\_\_ 278. Diamond Spearhead Toothpick Holder - Green Opal. (scarce with good opal.)
- \_\_\_\_\_ 279. U.S. Glass Vermont Toothpick Holder - Green with good gold (has excellent gold - really bright!)
- \_\_\_\_\_ 280. **U.S. GLASS CROECUS TOOTHPICK HOLDER - GREEN WITH GOLD (VERY DESIRABLE AND AN OLD ONE)**
- \_\_\_\_\_ 281. U.S. Glass X-Ray Toothpick Holder - Green with Gold
- \_\_\_\_\_ 282. Jefferson's Colonial Toothpick Holder - Apple Green with Gold
- \_\_\_\_\_ 283. Heisey Winged Scroll Toothpick Holder - Green with Gold (very scarce)
- \_\_\_\_\_ 284. **HEISEY BEADED SWAG TOOTHPICK HOLDER AND TRAY - OPAL. (BOTH PIECES HAVE EXCELLENT GOLD AND DECOR; QUITE SCARCE)**
- \_\_\_\_\_ 285. **FENTON ARCHED FLUTE IRIDESCENT URN STRETCH TOOTHPICK HOLDER - WISTERA (VERY RARE COLOR AND VERY DESIRABLE)**
- \_\_\_\_\_ 286. **IMPERIAL FLUTE CARNIVAL TOOTHPICK HOLDER - VAS./MARI. (EXTREMELY RARE COLOR AND IN PERFECT CONDITION)**
- \_\_\_\_\_ 287. **IMPERIAL FLUTE CARNIVAL TOOTHPICK HOLDER - BLUE (SUPER RARE AND VERY DESIRABLE)**
- \_\_\_\_\_ 288. Imperial Flute Carnival Toothpick Holder - Purple (scarce)
- \_\_\_\_\_ 289. Imperial Flute Carnival Toothpick Holder - Purple (scarce, some roughness; flares up more)
- \_\_\_\_\_ 290. Imperial Flute Carnival Toothpick Holder - Green (has unusual gold swirl irid.)
- \_\_\_\_\_ 291. Imperial Flute Carnival Toothpick Holder - Mari. (good dark color)
- \_\_\_\_\_ 292. **IMPERIAL'S CHESTERFIELD CARNIVAL TOOTHPICK HOLDER - MARI. (VERY DESIRABLE; SIGNED WITH IRON CROSS)**
- \_\_\_\_\_ 293. **IMPERIAL OPTIC 2 HANDLED OPEN SALT - LT. MARI. (SUPER DESIRABLE AND SIGNED WITH IRON CROSS)**
- \_\_\_\_\_ 294. **HEISEY PLAIN BAND TOOTHPICK HOLDER - LT. MARI. (RARE TO FIND IRIDIZED)**
- \_\_\_\_\_ 295. Higbee's Estelle Straight Sided Toothpick Holder - Lt. Mari. (very scarce; iridized)
- \_\_\_\_\_ 296. Jefferson Idyll Toothpick Holder - Clear Opal. (scarce)
- \_\_\_\_\_ 297. Iris and Meander Toothpick Holder - Clear Opal.
- \_\_\_\_\_ 298. Beatty Rib Toothpick Holder - Clear Opal.
- \_\_\_\_\_ 299. Imperial Large Size Zipper Loop Kerosine Lamp - Mari. (has checks at base of font but still rare)
- \_\_\_\_\_ 300. **9" TALL CONSOLIDATED PRINCE EDWARD KEROSENE LAMP - PINK CASE ON CLEAR (VERY RARE AND VERY DESIRABLE)**
- \_\_\_\_\_ 301. **8" TALL NORTHWOOD (?) COIN SPOT KEROSENE LAMP - CRANBERRY OPAL. (VERY RARE BUT HAS BEEN DRILLED IN 2 SPOTS - STILL NICE)**
- \_\_\_\_\_ 302. **9" TALL, RIVERSIDE FERN KEROSENE LAMP - GREEN FONT ON CLEAR BASE (SCARCE AND DESIRABLE)**
- \_\_\_\_\_ 303. **8" TALL, 4" BASE FINDLAY FISHSCALE WITH CABLE FONT KEROSENE LAMP - GREEN**
- \_\_\_\_\_ 304. **8 1/2" TALL, 6 1/4" BASE FINDLAY TEARDROP WITH EYEWINKER AND PLUM FONT KEROSENE LAMP - GREEN (SMALL FLAKE ON BASE OF LAMP)**
- \_\_\_\_\_ 305. **9 1/2" TALL, 5" BASE BULLSEYE - FINE DETAIL KEROSENE LAMP - GREEN**
- \_\_\_\_\_ 306. U.S. Glass Bullseye and Daisy 6 pc. Wine Set - Green with Gold (4 wines, Decanter and Stopper (OK); one wine damaged - scarce set)
- \_\_\_\_\_ 307. 7 1/2" Tall Sunset Custard Kerosine Lamp on Metal Base (very scarce)
- \_\_\_\_\_ 308. Clear Whale Oil Lamp on Marble Base
- \_\_\_\_\_ 309. **U.S. GLASS FIGURAL PARROT NIGHT LIGHT (SCARCE AND VERY DESIRABLE)**
- \_\_\_\_\_ 310. **U.S. GLASS FIGURAL OWL NIGHT LIGHT (HAS NOT BEEN ELECTRIFIED)**
- \_\_\_\_\_ 311. Pair U.S. Glass Figural Lovebirds Small Size Shades (tail tip of one bird on one shade is chipped)
- \_\_\_\_\_ 312. Milk Glass Miniature Gone with the Wind Lamp (not sure of the pattern; has pink trim; has 2 chips on top globe)



- \_\_\_\_\_ 313. **RIVERSIDE CRYSTAL WOMEN MEDALLION KEROSENE LAMP - CLEAR WITH GOOFUS (VERY RARE AND HAS PRETTY GOOD GOOFUS)**
- \_\_\_\_\_ 314. Riverside Cinch and Collar Wild Rose Kerosine Lamp - Crystal (scarce)
- \_\_\_\_\_ 315. M'burg Ohio Star Water Bottle - Crystal
- \_\_\_\_\_ 316. M'burg Ohio Star Spooner - Crystal
- \_\_\_\_\_ 317. M'burg Ohio Star Large Oval Relish Tray - Crystal
- \_\_\_\_\_ 318. M'burg Hobstar and Feather Club Shaped Nappy - Crystal (has gold trim on edge)
- \_\_\_\_\_ 319. M'burg Hobstar and Feather Stemmed Compote - Crystal/Frosted
- \_\_\_\_\_ 320. M'burg Hobstar and Feather Large Ice Cream Shaped Bowl - Crystal
- \_\_\_\_\_ 321. M'burg Potporri Stemmed Compote - Crystal (is Poppy exterior pattern)
- \_\_\_\_\_ 322. M'burg Ohio Star Handled Toothpick - Crystal
- \_\_\_\_\_ 323. Imperial Fashion Toothpick Holder - Crystal
- \_\_\_\_\_ 324. Arched Fleur-de-lis Toothpick Holder - Crystal
- \_\_\_\_\_ 325. New Martinsville's Carnation Toothpick Holder - Crystal
- \_\_\_\_\_ 326. U.S. Glass Galloway Toothpick Holder - Crystal Gold Flash
- \_\_\_\_\_ 327. Queen City Silver Co. Plated Toothpick Holder (has eagle figural; etched "Take Your Pick")
- \_\_\_\_\_ 328. **ETCHED TOOTHPICK HOLDER - SIGNED "HAWKES" - CRYSTAL (VERY SCARCE AND DESIRABLE)**
- \_\_\_\_\_ 329. **MT. WASHINGTON OR PAIRPOINT BULBOUS FLORAL DECORATED TOOTHPICK HOLDER - DECORATED MILK GLASS (RARE AND COLLECTIBLE)**
- \_\_\_\_\_ 330. **SMITH BROTHERS "COLUMNED RIBS" DECORATED TOOTHPICK HOLDER - DECORATED MILK GLASS (VERY RARE AND COLLECTIBLE - GOOD QUALITY)**
- \_\_\_\_\_ 331. Mt. Washington or Smith Bros. Decorated Egg Shaped Salt Shaker with Lid - Decorated Milk Glass (nice - desirable)
- \_\_\_\_\_ 332. Royal Bayreuth Floral Tall Salt Shaker (signed with blue mark)
- \_\_\_\_\_ 333. **PAIR KLONDIKE SALT AND PEPPER SHAKERS - AMBER STAINED (RARE PAIR - BOTH MAY HAVE SLIGHT WEAR, BUT....)**
- \_\_\_\_\_ 334. Riverside Glass Co. - Ester Toothpick Holder - Amber Stained Etched (very desirable and quite nice quality)
- \_\_\_\_\_ 335. Greensburg Glass Co. - Tacoma Toothpick Holder - Amber Stained (nice color; small flake on base)
- \_\_\_\_\_ 336. Riverside Brilliant Tumbler - Amber Stained (scarce)
- \_\_\_\_\_ 337. Ribbed, Bulbous Base Toothpick Holder - Vaseline
- \_\_\_\_\_ 338. Diamond Spearhead Toothpick Holder - Vaseline Opal. (scarce and very desirable)
- \_\_\_\_\_ 339. Diamond Spearhead Toothpick Holder - Vaseline Opal. (chipped along top edge)
- \_\_\_\_\_ 340. Model Flint Glass Co. Ribbed Spiral Toothpick Holder - Vaseline Opal. (very scarce)
- \_\_\_\_\_ 341. **NORTHWOOD ROYAL IVY TOOTHPICK HOLDER - CRANBERRY/AMBER SPATTER (VERY RARE; HAS CRACKLE EFFECT; SOME ROUGHNESS ON EDGE AND MANUFACTURERS FLAWS)**
- \_\_\_\_\_ 342. **LIBBEY VENETIAN DIAMOND SQUARE TOP TOOTHPICK HOLDER - AMBERINA (VERY RARE AND SUPER DESIRABLE; GOOD COLOR)**
- \_\_\_\_\_ 343. **MT. WASHINGTON OR NEW ENGLAND DIAMOND QUILT HOURGLASS SHAPED TOOTHPICK HOLDER - AMBERINA (VERY RARE & UNUSUAL; COULD NOT FIND SHAPE LISTED)**
- \_\_\_\_\_ 344. **HEXAGONAL INVERTED THUMBPRINT TOOTHPICK HOLDER - REVERSE AMBERINA (VERY RARE; SHOWN ON COVER OF HEACOCK'S "RARE AND UNLISTED TOOTHPICK HOLDER'S" BOOK)**
- \_\_\_\_\_ 345. **CONSOLIDATED BULGING LOOPS TOOTHPICK HOLDER - PIGEON BLOOD (SCARCE W/ GOOD COLOR)**
- \_\_\_\_\_ 346. Consolidated Bulging Loops Tumbler - Pigeon Blood (scarce)
- \_\_\_\_\_ 347. **CONSOLIDATED BULGING LOOPS TOOTHPICK HOLDER - PINK SATIN (VERY SCARCE AND NICE)**
- \_\_\_\_\_ 348. Hobb's Pillar Ribbed Toothpick Holder - Cranberry and White Spatter (scarce)
- \_\_\_\_\_ 349. Duncan and Miller's Swirl, Two Ply Toothpick Holder - Clear with Cranberry Flash
- \_\_\_\_\_ 350. **HEISEY PRINCE OF WALES PLUMES TOOTHPICK HOLDER - RUBY STAINED (VERY RARE AND VERY DESIRABLE; ETCHED "WATERLOO" ON TOP EDGE)**
- \_\_\_\_\_ 351. Bryce Bros. Pleating Toothpick Holder - Ruby Stained
- \_\_\_\_\_ 352. Duncan and Miller Sweet Sixty-One Spooner - Ruby Stained
- \_\_\_\_\_ 353. Panelled Arched Stemmed Wine Glass - Ruby Stained (pattern ??)
- \_\_\_\_\_ 354. Patterned Wine Decanter and Stopper - Ruby Stained (pattern ??)
- \_\_\_\_\_ 355. **NORTHWOOD SPANISH LACE SYRUP WITH REEDED HANDLE - CRANBERRY OPAL. (VERY, VERY RARE AND VERY DESIRABLE)**
- \_\_\_\_\_ 356. **NORTHWOOD SPANISH LACE BULBOUS WATER PITCHER - CRANBERRY OPAL. (SUPER DESIRABLE AND VERY RARE; GOOD COLOR)**
- \_\_\_\_\_ 357. Opalescent Seaweed Covered Sugar Dish - Cranberry Opal. (very scarce and nice)
- \_\_\_\_\_ 358. Opalescent Seaweed Creamer - Cranberry Opal. (scarce; has check at top of handle where applied)
- \_\_\_\_\_ 359. Maize or Snail Type Patterned Ruffled Bowl - Cranberry Opal. (super color)
- \_\_\_\_\_ 360. 8" Tall Interior Fern Patterned Milk or Water Pitcher - Cranberry (very nice; has polished pontil on base)
- \_\_\_\_\_ 361. **LEAF MOLD WATER PITCHER - WHITE CASED SPATTER (VERY RARE AND DESIRABLE HAS GOLD FLAKES IN TEXTURE)**



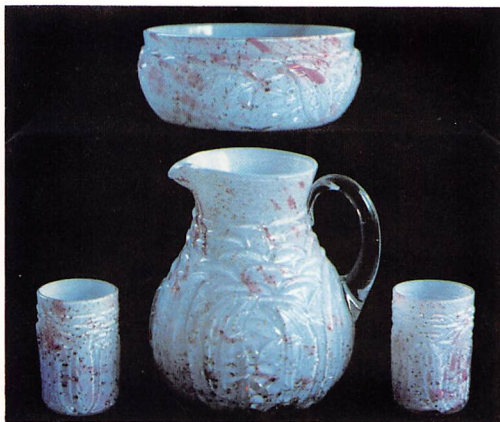
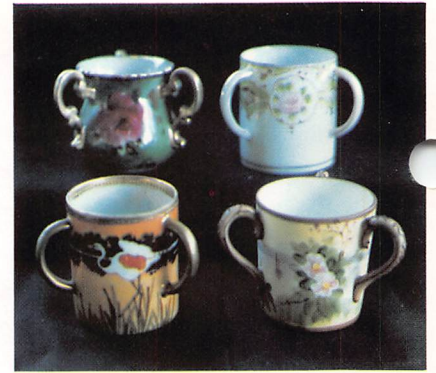
- \_\_\_\_\_ 362. (2) Leaf Mold Tumblers - White Cased Spatter (to be sold per each)
- \_\_\_\_\_ 363. **LEAF MOLD MASTER BERRY BOWL - WHITE CASED SPATTER (VERY SCARCE AND DESIRABLE)**
- \_\_\_\_\_ 364. Leaf Mold Salt Shaker (no lid) - Frosted Amber Spatter (very scarce and desirable; good color and quality)
- \_\_\_\_\_ 365. **LEAF MOLD WATER PITCHER - FROSTED AMBER SPATTER (VERY RARE AND VERY GOOD QUALITY)**
- \_\_\_\_\_ 366. (2) Leaf Mold Tumblers - Frosted Amber Spatter (to be sold per each)
- \_\_\_\_\_ 367. **(3) HOBBS GONTERMAN SWIRL GAS SHADES - AMBER TRIM/OPAL. (VERY SCARCE AND A VERY DESIRABLE PATTERN AND COLOR; SOLD PER EACH)**
- \_\_\_\_\_ 368. (2) Stripe Castor Bottles - Vas. and Clear Opal. (sold per each; very hard to find)
- \_\_\_\_\_ 369. Reverse Swirl Sugar Shaker (no lid) - Vas. Opal. (scarce and nice)
- \_\_\_\_\_ 370. **N CHERRY AND CABLE MASTER PUNCH BOWL AND BASE - CRYSTAL (A HUGE; PERFECT PIECE - WHO'LL BRING THE PUNCH ?)**
- \_\_\_\_\_ 371. Stripe/Ring Neck Mold Milk Pitcher - Clear Opal. (very scarce size; has polished pontil on base)
- \_\_\_\_\_ 372. Jackson ftd. Water Pitcher - Clear Opal. (very scarce; has goofus trim on flowers and feet)
- \_\_\_\_\_ 373. Daisy (type) Match Holder - Clear Opal. (age or pattern?)
- \_\_\_\_\_ 374. Bees on a Basket Square Toothpick Hold - Custard with Blue Bees
- \_\_\_\_\_ 375. **FIGURAL BLACK BOY MATCH HOLDER WITH ORIGINAL PAINT - DECORATED MILK GLASS (VERY SCARCE AND UNUSUAL; VERY COLLECTIBLE)**
- \_\_\_\_\_ 376. Finger Grip Basket Toothpick - Amber (old)
- \_\_\_\_\_ 377. Box Shaped Daisy and Button Toothpick - Amber
- \_\_\_\_\_ 378. Daisy and Button Kettle Shaped Toothpick with Wire Handle - Blue
- \_\_\_\_\_ 379. Hobnail (type) Toothpick Holder - Lite Blue
- \_\_\_\_\_ 380. **NORTHWOOD INVERTED FAN AND FEATHER TOOTHPICK HOLDER - CUSTARD WITH DECORATION (SUPER RARE AND VERY DESIRABLE; EXCELLENT DECORATION; FEW AROUND FOR SALE; HERE'S YOUR CHANCE)**
- \_\_\_\_\_ 381. **NORTHWOOD CHRYSANTHEMUM SPRIG TOOTHPICK HOLDER - BLUE CUSTARD/DECORATED (SUPER RARE AND BEAUTIFUL; SIGNED IN SCRIPT; GOOD COLOR)**
- \_\_\_\_\_ 382. **NORTHWOOD CHRYSANTHEMUM SPRIG TOOTHPICK HOLDER - CUSTARD DECORATED (SUPER QUALITY AND COLOR; SIGNED IN SCRIPT)**
- \_\_\_\_\_ 383. **NORTHWOOD ARGONAUT SHELL TOOTHPICK HOLDER - CUSTARD DECORATED (VERY RARE; PROBABLY THE BEST QUALITY YOU'VE SEEN)**
- \_\_\_\_\_ 384. Consolidated Shell and Seaweed Toothpick Holder - Blue Opaque (very scarce and nice)
- \_\_\_\_\_ 385. Consolidated Shell and Seaweed Toothpick Holder - Green Opaque (very scarce and nice)
- \_\_\_\_\_ 386. **NORTHWOOD FLUTED SCROLLS DECORATED CRUET - VAS. OPAL. (VERY SCARCE AND DESIRABLE)**
- \_\_\_\_\_ 387. Northwood Fluted Scrolls Cruet - Vas. Opal. (scarce; no stopper, no decoration)
- \_\_\_\_\_ 388. Northwood Fluted Scrolls Decorated Cruet - Blue Opal. (nice decor; no stopper)
- \_\_\_\_\_ 389. Northwood Jackson Cruet - Custard with Goofus (scarce; no stopper)
- \_\_\_\_\_ 390. Christmas Bead and Panel Cruet - Green Opal. (rare; has crack at top by handle; no stopper)
- \_\_\_\_\_ 391. Optic Cruet - Green (no stopper)
- \_\_\_\_\_ 392. **NORTHWOOD PARIAN SWIRL CRUET - VIOLET SATIN (ODD COLOR, NO STOPPER)**
- \_\_\_\_\_ 393. Blown Glass Cruet with Cranberry Flash and Enameled Floral Decor - Cranberry Flash (nice)
- \_\_\_\_\_ 394. Flower and Pleat Handled Syrup - Amber Stained Frosted (scarce)
- \_\_\_\_\_ 395. **MODEL FLINT GLASS CO. WREATH AND SHELL TOOTHPICK HOLDER - BLUE OPAL. (RARE AND VERY DESIRABLE; GOOD OPAL. AND COLOR)**
- \_\_\_\_\_ 396. **NORTHWOOD CHRYSANTHEMUM BASE, SPECKLED TOOTHPICK HOLDER - BLUE (VERY SCARCE AND VERY DESIRABLE)**
- \_\_\_\_\_ 397. Swirl "Shotglass" Toothpick Holder - Blue Opal. (scarce)
- \_\_\_\_\_ 398. Beatty and Sons Beatty Honeycomb Toothpick Holder - Blue Opal. (scarce)
- \_\_\_\_\_ 399. Northwood Colonial Stairsteps Toothpick Holder - Blue Opal. (scarce)
- \_\_\_\_\_ 400. **JEFFERSON GLASS CO. TOKYO TOOTHPICK HOLDER - BLUE OPAL (VERY RARE AND DESIRABLE; FAIR OPAL)**
- \_\_\_\_\_ 401. Iris and Meander Toothpick Holder - Blue Opal. (scarce)
- \_\_\_\_\_ 402. Iris and Meander Toothpick Holder - Blue with Gold
- \_\_\_\_\_ 403. New Deganhart Vermont ftd. Toothpick Holder - Blue Irid.
- \_\_\_\_\_ 404. (new ?) Galloway Toothpick Holder - Blue / Gold (looks old)
- \_\_\_\_\_ 405. **R.S. PRUSSIA 2 HANDLED FLORAL TOOTHPICK HOLDER (RARE AND DESIRABLE; SIGNED WITH RED MARK)**
- \_\_\_\_\_ 406. **4" R.S. PRUSSIA COTTAGE SCENE SQUATTY ROUND VASE (SIGNED WITH RED MARK)**
- \_\_\_\_\_ 407. 12 1/2" Unmarked R.S.Prussia Floral Bun Tray with Blue Trim
- \_\_\_\_\_ 408. 10 1/2" R.S.Prussia Floral Bowl with Green Highlights (signed with red mark)
- \_\_\_\_\_ 409. 12" R.S.Prussia Relish with Blown Out Carnation Mold (has green trim; signed with red mark)
- \_\_\_\_\_ 410. 9" Unmarked R.S.Prussia Jewelled Plate with Floral Decor.



- \_\_\_\_\_ 411. SIGNED NIPPON THREE HANDLED TOOTH-PICK HOLDER; SCENIC WITH STORKS AND ORANGE BACKGROUND -SIGNED BLUE MAPLE LEAF MARK
- \_\_\_\_\_ 412. NIPPON FLORAL THREE HANDLED TOOTH-PICK HOLDER, ROSES AND GREEN BACKGROUND - SIGNED WITH BLUE MAPLE LEAF MARK
- \_\_\_\_\_ 413. NIPPON SCENIC THREE HANDLED TOOTH-PICK HOLDER, MATTE FINISH - SIGNED WITH GREEN WREATH MARK
- \_\_\_\_\_ 414. NIPPON SCENIC THREE HANDLED TOOTH-PICK HOLDER, MATTE FINISH - SIGNED WITH GREEN WREATH MARK
- \_\_\_\_\_ 415. Nippon Floral Three Handled Toothpick Holder Green Trim on White - signed with Blue Maple Leaf Mark
- \_\_\_\_\_ 416. NIPPON OCTAGONAL TOOTHPICK HOLDER WITH MATTE FINISH COW SCENE - SIGNED WITH GREEN WREATH MARK (VERY UNUSUAL)
- \_\_\_\_\_ 417. Nippon Two Handled Scenic Toothpick Holder, Tropical Island Scene - signed with Rising Sun Mark
- \_\_\_\_\_ 418. Noritake Tree in the Meadow Toothpick Holder - signed with Red Mark (chip on top edge)
- \_\_\_\_\_ 419. Nippon Egg Shaped Toothpick Holder with Floral Decor on Top Edge - signed with Green Wreath Mark
- \_\_\_\_\_ 420. Unmarked Prussia / German type Match Holder with Striker on Underside (scarce)
- \_\_\_\_\_ 421. Unusual New St. Clair Toothpick Whimsey with Inverted Fan and Feather Pattern - Blue Milk Glass
- \_\_\_\_\_ 422. (2) New Inverted Thumbprint Toothpick Holders - Amy.
- \_\_\_\_\_ 423. 9 3/4" Northwood Interior Panelled Console Bowl on Black Amy. Base - Coral Red Slag (very attractive)
- \_\_\_\_\_ 424. 8 1/4" Fenton Deep Flared Bowl - Mandarin Red
- \_\_\_\_\_ 425. 8" Moonstone Centerpiece Bowl - Black Decal Stork Design on Floral 4 ftd.Black Amy. Base
- \_\_\_\_\_ 426. 8" Fenton Mellon Rib Low Ruffled Bowl - Periwinkle Blue (scarce color)
- \_\_\_\_\_ 427. Pink Case Diamond Quilted Barber Bottle (old or new?)
- \_\_\_\_\_ 428. Northwood Panelled Candy Jar Base only - Coral Red
- \_\_\_\_\_ 429. Northwood Leaf Medallion Butter Lid only - Blue / Gold

## NOTES





Enjoy this

**BLUR**

Auction