

BURNS

AUCTION SERVICE

Carnival Glass Auction

Sat., August 27, 1988

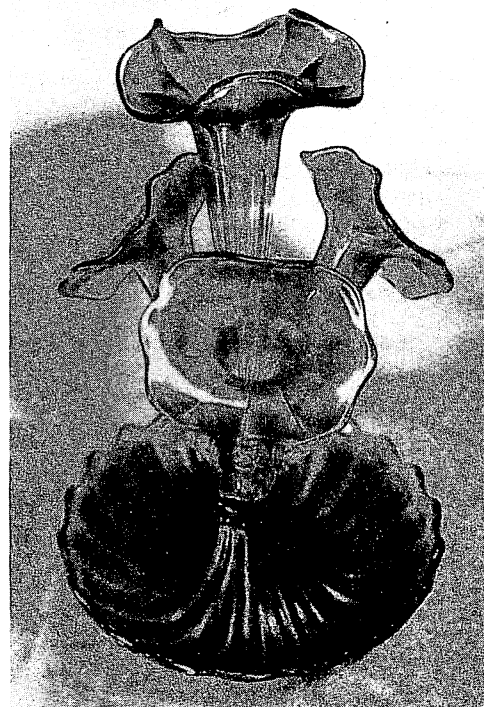
10:00 a.m. (preview 6 - 9 p.m. Friday,
8 - 10 a.m. Saturday)

at the **Days Inn**

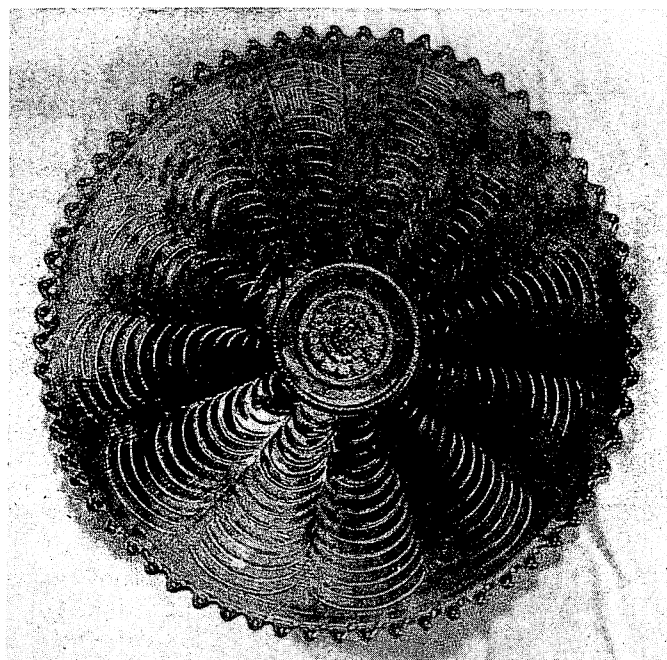
West Morris Street, Bath, N.Y. 14810

(607)776-7644

(just off Exit 38 of the
Southern Tier Expressway)



LOT #180



LOT #55



LOT #150

Burns Auction Service

Tom Burns
109 East Steuben Street
Bath, New York 14810
(607) 776-7942

Bill Richards
44 Water Street
Poland, Ohio 44514
(216) 757-2001

It is our privilege to present, at auction, the collection of Edna Burns from S. Weymouth, Mass. Edna was a very active collector in the New England area and many will remember the ads for "Minnah's Antiques" in the Antique Trader. Anyone that went to May's Market in Brimfield will remember Edna and her son Carl setting up with all the vultures around. She passed away this spring and as we have been given the opportunity to sell her collection, we hope as many of will attend as possible. It should be a super occasion.

The Days Inn of Bath will host the event. You may call your reservations in directly at (607) 776-7644. Be sure to mention Burns Auction Service.

Mail Bids honored under the following conditions:

1. No deposit required. Bidders will take full responsibility to honor any and all bids we execute for them. Payment in full plus postage and handling required after notification and before we ship any item to them.
2. Items are bid on in perfect condition with average or above average iridescence OR as listed in the brochures. Bids will not be carried out when damage on an item has been found during the auction.
3. Successful bidders will be notified by collect call from the auctioneer (so be sure to include phone number).
4. Phone inquiries about the glass or any other questions are welcome.
5. All non-successful bids will receive a result summary in the mail. Results of all bids will be provided.
6. If you have some other person at the auction bidding for you, they must pay for the item before taking it.
7. Mail bids due by Friday, August 26th, **NO LATER, PLEASE!**

- | | |
|------------------------------------------------------------------------------------------------------------------------------------------------------------------------|-----------------------------------------------------------------------------------------------------------|
| _____ 1. Rooster Hatpin - Lavender (very scarce) | _____ 23. 9" FENTON DRAGON AND LOTUS ICE CREAM SHAPED BOWL - RED/AMBERINA (GOOD IRID. AND VERY SCARCE) |
| _____ 2. Bumblebee Hatpin - Pur. | _____ 24. FENTON HOLLY RUFFLED HAT - RED (SUPER COLOR AND IRID.) |
| _____ 3. Butterfly Hatpin - Pur. | _____ 25. BASE TO REGAL IRIS GONE WITH THE WIND LAMP - RED (SUPER RARE AND NICE; WHO'S GOT THE TOP?) |
| _____ 4. Triad Hatpin - Pur. | _____ 26. 8" FENTON FLORENTINE CANDLESTICK - RED (VERY SCARCE) |
| _____ 5. Cattails Hatpin - Pur. | _____ 27. 8" IMP. DOUBLE SCROLL CANDLESTICK - RED (SCARCE) |
| _____ 6. Pair 8 1/2" Florentine Candlesticks - Ice Green | _____ 28. 7" FENTON #606 PLAIN CUPPED BOWL - RED (SCARCE) |
| _____ 7. Pair 8" Colonial Candlesticks - Olive Green (with gold trim) | _____ 29. FENTON 2 ROW OPEN EDGE BASKETWEAVE RUFFLED HAT - RED (SCARCE & DESIRABLE WITH GOOD COLOR) |
| _____ 8. English Swirl Patterned Covered Butter Dish - Mari. | _____ 30. FENTON 2 ROW OPEN EDGE BASKETWEAVE RUFFLED HAT - WHITE (VERY SCARCE COLOR) |
| _____ 9. Imp. Oval and Round 7 pc. Ruffled Berry Set - Mari. | _____ 31. Fenton 2 Row Open Edge Basketweave Ruffled Hat - Aqua (very scarce color) |
| _____ 10. FENTON PANTHER LARGE FTD. RUFFLED BERRY BOWL - BLUE (VERY RARE AND VERY DESIRABLE) | _____ 32. Fenton 2 Row Open Edge Basketweave Ruffled Hat - Black Amy. (very scarce color) |
| _____ 11. 9 1/2" FENTON LITTLE FISHES LARGE FTD. ICE CREAM SHAPED BOWL - BLUE (VERY SCARCE AND DESIRABLE) | _____ 33. Fenton 2 Row Open Edge Basketweave Jack In Pulpit Hat - Vaseline (scarce color) |
| _____ 12. 8 1/2" Fenton Captive Rose Bowl with Candy Ribbon Edge - Blue | _____ 34. 6" FENTON LOTUS & POINSETTIA FTD. RUFFLED SAUCE - AQUA (VERY SCARCE ITEM) |
| _____ 13. Fenton Orange Tree Stemmed Wine Glass - Mari. | _____ 35. FENTON PANELLED DANDELION TANKARD WATER PITCHER - GREEN (VERY SCARCE AND DESIRABLE ITEM) |
| _____ 14. 6 - 7" PALM BEACH BANANA SHAPED WHIMSEY BOWL - MARI./LT. AMY. (VERY SCARCE SHAPE AND DESIRABLE) | _____ 36. (3) Fenton Panelled Dandelion Tumblers - Green (scarce; to be sold separately) |
| _____ 15. 6 - 7" PALM BEACH TRI-CORNERED SHAPE WHIMSEY-MARI./LT. AMY. (VERY SCARCE SHAPE AND VERY DESIRABLE) | _____ 37. Dugan Stork and Rushes Mug - Mari. |
| _____ 16. N RASPBERRY 7 PC. WATER SET - GREEN (VERY SCARCE SET AND VERY DESIRABLE) | _____ 38. Dugan Vintage Banded Mug - Mari. |
| _____ 17. N Raspberry 4 ftd. Occasional Sauce - Pur. (very, very hard item to find; nice) | _____ 39. DUGAN MANY FRUITS 10 PC. PUNCH SET - PURPLE (SUPER SET; HAS 8 CUPS AND ORIGINAL HANGERS) |
| _____ 18. N Raspberry 4 ftd. Occasional Sauce - Mari. (very scarce color and nice) | _____ 40. DUGAN BEADED SHELL MUG - WHITE (SUPER, SUPER RARE AND IS OUTSTANDING) |
| _____ 19. N Raspberry 4 ftd. Occasional Sauce - Green (scarce; has epoxy repair on feet) | _____ 41. Dugan Beaded Shell Mug - Purple (scarce) |
| _____ 20. Fenton Horsehead Medallion ftd. Nut Bowl - Amy. (very rare color; rare piece) | _____ 42. N Singing Bird Covered Butter Dish - Mari. (very scarce item) |
| _____ 21. FENTON HORSEHEAD MEDALLION FTD. NUT BOWL - RED SLAG (VERY RARE MANDARIN RED BASE GLASS; SUPER RARE) | _____ 43. N Singing Bird Creamer - Mari. (scarce) |
| _____ 22. 8" FENTON LEAF CHAIN ICE CREAM SHAPED BOWL WITH BERRY EXTERIOR - RED/ REVERSE AMBERINA (SUPER RARE COLOR FOR THIS PATTERN AND SIZE; ONLY A FEW KNOWN) | _____ 44. N Singing Bird Spooner - Mari. (scarce) |

45. N SINGING BIRD MUG - AQUA OPAL. (SUPER RARE WITH GOOD COLOR & EXCELLENT OPAL)
46. N SINGING BIRD MUG - AMY/LAVENDER (VERY ODD TINGE WITH EXCELLENT IRID.; RARE)
47. N SINGING BIRD MUG - ELEC. BLUE (SUPER COLOR & IRID.)
48. N Singing Bird Mug - Blue
49. N SINGING BIRD MUG - GREEN (VERY SCARCE COLOR)
50. N Singing Bird Mug - Amy. (flake on edge)
51. N Singing Bird Mug - Mari.
52. DUGAN BUTTERFLY & TULIP LG. FTD. BOWL - MARI. (SCARCE AND VERY DESIRABLE)
53. N Swirl 7 pc. Tankard Water Set - Mari.
54. 9" N STRAWBERRY RUFFLED BOWL WITH PLAIN EXTERIOR - GREEN (SUPER COLOR AND HAS ELECTRIC IRID.)
55. 9" N NIPPON PLATE WITH BASKETWEAVE EXTERIOR - GREEN (SUPER COLOR AND SUPER NICE; A CLASS PIECE)
56. 9" N NIPPON RUFFLED BOWL WITH BASKETWEAVE EXTERIOR - GREEN (SUPER SCARCE & NICE)
57. N ACORN BURR COVERED BUTTER DISH - GREEN (SUPER SCARCE AND DESIRABLE)
58. N Grape and Gothic Arches 4 pc. Table Set - Green (super rare set; the creamer is damaged)
59. N Grape and Gothic Arches 4 pc. Table Set - Mari (very scarce set)
60. N ROUND BUSHEL BASKET - VASELINE (ABSOLUTELY SUPER RARE AND VERY, VERY DESIRABLE - 1ST WE'VE EVER SOLD AT AUCTION - A KEY ITEM)
61. Dugan Waterlily & Cattails Covered Butter Dish - Mari. (very rare; has a couple base chips)
62. Dugan Waterlily & Cattails Covered Sugar - Mari. (very rare item; tough to find)
63. DUGAN FISHERMANS MUG - MARI (VERY SCARCE WITH GOOD COLOR)
64. IMP. ROBIN MUG - MARI/SMOKE BASE (VERY RARE COLOR AND TOUGH TO FIND)
65. 9" FOUR FLOWERS VARIANT FLAT PLATE - OLIVE GREEN (SUPER RARE; AN ODD COLOR - HARD TO FIND)
66. FENTON ORANGE TREE STANDARD SIZE MUG - BRICK RED (ODD COLOR; VERY SCARCE)
67. FENTON ORANGE TREE STANDARD SIZE MUG - LT. AMY. (VERY SCARCE COLOR; HAS LAVENDER TINT)
68. Fenton Orange Tree Standard Size Mug - Blue
69. Fenton Orange Tree Standard Size Mug - Mari.
70. 10 1/2" DUGAN HEAVY GRAPE RUFFLED BOWL WITH COMPASS EXT. - PUR. (SUPER RARE; SUPER QUALITY WITH BLUE IRID.)
71. 6" DUGAN HEAVY GRAPE SMALL RUFFLED SAUCE - PUR. (SUPER RARE ITEM AND VERY DESIRABLE)
72. 6" DUGAN HEAVY GRAPE SMALL RUFFLED SAUCE - PUR. (SUPER RARE ITEM AND VERY DESIRABLE)
73. DUGAN RAINDROPS RUFFLED BANANA SHAPED DOMED BOWL - PUR. (SUPER COLOR AND A VERY UNUSUAL SHAPE)
74. Dugan Raindrops Tight Crimped Domed Bowl - P. Opal. (very unusual shape with good opal.)
75. 9" Dugan Raindrops Domed Ruffled Bowl - P. Opal. (good opal.)
76. 5 1/2" Dugan Wishbone & Spades Ruffled Sauce - Pur.
77. 6" Dugan Wishbone & Spades Flat Plate - P. Opal. (very rare; enamelled "Souv. of Harmony, Maine")
78. 5 1/2" Dugan Cherry Ruffled Sauce with Jewelled Heart Ext. - Pur.
79. 6" DUGAN CHERRY PLATE WITH TIGHT CRIMPED EDGE AND JEWELLED HEART EXT. - PUR. (VERY SCARCE AND DESIRABLE)
80. DUGAN FISHNET EPERGNE - RUFFLED EDGE - P. OPAL. (NICE COLOR & QUALITY; SCARCE)
81. DUGAN EPERGNE - STRAWBERRY LILY & PLAIN BASE - AMY.
82. 6" Dugan Petal & Fan Ruffled Sauce with Jewelled Heart Ext. - P. Opal.
83. 6" Dugan Fan Ftd. Sauce - P. Opal. (super example and very scarce)
84. Dugan Fan Handled Sauce Boat - P. Opal (scarce & nice)
85. 9" DUGAN CHERRIES/JEWELLED HEART EXT. 8 RUFFLED BOWL - P. OPAL. (VERY SCARCE SHAPE AND DESIRABLE)
86. 6" Dugan Cherries/Jewelled HeartExt. Ruffled Sauce - P. Opal. (nice item)
87. 7" Dugan Stippled Flower Ruffled Bowl - P. Opal.
88. 7 1/2" Dugan Stippled Flower Tri Cornered Bowl - P. Opal. (super opal. on exterior; nice)
89. DUGAN DAISY AND PLUME 3 FTD. OVAL CANDY DISH - P. OPAL (VERY SCARCE AND VERY DESIRABLE)
90. N Daisy and Plume Stemmed Rose Bowl - Mari.
91. N BEADED CABLE FTD. ROSE BOWL - AQUA OPAL. (RARE AND VERY DESIRABLE; NICE)
92. N LEAF & BEADS FTD. ROSE BOWL - ELEC. BLUE (VERY GOOD COLOR AND VERY DESIRABLE)
93. N Leaf & Beads Ftd. Rose Bowl with Floral Interior - "Olive Green" (very scarce and very odd tint)
94. Fenton Flowers Ftd. Rose Bowl - Black Amy. (very scarce color and unusual)
95. FENTON ORANGE TREE HANDLED LOVING CUP - MARI. (SCARCE AND VERY DESIRABLE; NICE)
96. N IVY TOWN PUMP - MARI. (VERY RARE AND DESIRABLE, BUT HAS CHIP ON BASE OF HANDLE)
97. N LOVELY / LEAF & BEADS EXTERIOR FTD NUT BOWL - PUR. (SUPER RARE PATTERN WITH GOOD COLOR)
98. N PEACOCKS BOWL WITH PIE CRUST EDGE & RIBBED EXT. - AMY. (SUPER DESIRABLE WITH GOOD QUALITY)
99. N PEACOCKS BOWL - RUFFLED WITH RIBBED EXT. - MARI. (VERY SCARCE WITH GOOD COLOR)
100. N HEART AND FLOWERS STEMMED COMPOTE - ICE BLUE (SUPER COLOR AND SUPER IRID., VERY, VERY RARE)

101. N HEART AND FLOWERS STEMMED COMPOTE - AQUA OPAL. (VERY RARE AND SUPER DESIRABLE)
102. N HEART AND FLOWERS STEMMED COMPOTE - ELEC. BLUE (SUPER IRID AND QUALITY)
103. N HEART AND FLOWERS STEMMED COMPOTE - WHITE (VERY SCARCE & NICE)
104. N HEART AND FLOWERS STEMMED COMPOTE - MARI. (VERY SCARCE)
105. IMP. HOBSTAR FLOWER STEMMED COMPOTE - PUR. (SUPER IMPERIAL COLOR & QUALITY)
106. IMP. HOBSTAR FLOWER COMPOTE - GREEN (VERY RARE; QUITE A TOUGH COLOR)
107. Imp. Hobstar Flower Compote - Mari. (very scarce)
108. WESTMORELAND SMOOTH RIB RUFFLED STEMMED COMPOTE - AMBER OPAL. (VERY UNUSUAL; ODD COLOR AND NICE)
109. Cambridge Inverted Feather Ruffled Stemmed Compote - Mari. (scarce and very desirable)
110. M'BURG STRAWBERRY WREATH STEMMED COMPOTE - MARI. (SUPER SCARCE & GOOD IRID.)
111. M'burg Strawberry Wreath Stemmed Compote - Amy. (very scarce; has flake on edge)
112. 7 3/4" M'burg Little Stars Ruffled Bowl - Amy. (very scarce)
113. 7 3/4" M'burg Little Stars Ruffled Bowl - Mari. (very scarce)
114. 7 3/4" M'burg Little Stars Ruffled Bowl - Green (scarce; has tiny flake on edge)
115. M'BURG MITERED OVALS VASE - GREEN (EXTREMELY RARE BUT DAMAGED AT TOP)
116. 8" M'burg Mayan Ice Cream Shaped Bowl - Green (good color)
117. 6" M'burg Blackberry Wreath Bowl with Tight Crimped Edge - Green
118. 9" M'burg Whirling Leaves Deep Round Bowl - Amy. (super radium finish)
119. M'burg Diamond Tumbler - Aqua Green (odd tint; not a true green color)
120. M'BURG HANGING CHERRIES 4 PC. TABLE SET - MARI. (VERY RARE SET; CHIP ON BASE OF BUTTER DISH)
121. 7" M'burg Hanging Cherries Ice Cream Shaped Bowl - Amy. (scarce)
122. 7 1/2" M'burg Hanging Cherries Low Ice Cream Shaped Bowl - Mari. (very flat; almost a plate; odd size)
123. U.S. Glass Pennsylvania Stemmed Compote - Mari. (very scarce pattern)
124. N G & C Powder Jar Base Only - Ice Blue (very scarce; who's got the lid?)
125. N G & C HATPIN HOLDER - ICE BLUE (SUPER, SUPER COLOR AND QUALITY; EXT. RARE)
126. N G & C Hatpin Holder - Amy. (very scarce and desirable)
127. N G & C Table Set Creamer Only - Amy.
128. N G & C Table Set Spooner Only - Amy.
129. N G & C Table Set Creamer Only - Mari. (has chip on base)
130. N G & C Table Set Spooner Only - Mari.
131. N G & C Berry Set - Mari.
132. Fenton Feathered Serpent 7 pc. Berry Set - Green (very scarce set)
133. 9 3/4" Fenton Feathered Serpent Flat Ice Cream Shaped Bowl - Mari (very unusual shape and nice color)
134. 6" Smooth Rib Interior; Jewelled Heart Ext. Ruffled Sauce - P. Opal.
135. DUGAN NAUTILUS NOVELTY CREAMER - P. OPAL (GOOD DARK COLOR AND OPAL.)
136. 9 1/4" Dugan Fanciful Ruffled Bowl - P. Opal. (super color)
137. 8" Dugan Round Up Flat Ruffled Plate - P. Opal. (good desirable item; scarce)
138. 9" Dugan Apple Blossom Twigs Ruffled Bowl - P. Opal. (scarce & desirable)
139. 9" Dugan Double Stem Rose Domed Bowl - P. Opal.
140. 8 1/2" DUGAN WESTERN DAISY DOMED FOOTED BOWL - P. OPAL. (SUPER RARE PATTERN; ONLY A COUPLE KNOWN)
141. Imp. Snow Fancy Ind. Creamer - Mari.
142. Imp. Lustre Rose Covered Butter Dish - Mari.
143. Imp. Lustre Rose Creamer - Mari. (chip off base)
144. 9" Imp. Diamond Ring Ruffled Bowl - Smoke
145. IMP. FASHION BREAKFAST SUGAR & CREAMER - SMOKE (SUPER RARE AND DESIRABLE SET; NICE)
146. IMP. GRAPE FLAT PLATE - LT. SMOKE (SUPER IRID.; AND HAS ODD TINGE)
147. Imp. Hattie Deep Round Bowl - Mari.
148. Imp. Windmill Water Pitcher - Mari.
149. Imp. Windmill Milk Pitcher - Mari.
150. IMP. COLONIAL LADY VASE - PUR. (ABSOLUTELY ONE OF THE MOST BEAUTIFUL PIECES YOU'LL SEE; SUPER COLOR & IRID.)
151. Imp. Hobstar 4 pc. Table Set - Mari.
152. Imp. Octagon 7 pc. Water Set - Mari.
153. Imp. 474 6 pc. Water Set - Mari.
154. 8" IMP. OCTAGON VASE - MARI. (SUPER SCARCE & DESIRABLE)
155. IMP. FASHION LARGE ROSE BOWL - DK. MARI. (SUPER RARE & VERY DESIRABLE; NICE)
156. IMP. FLUTE PUNCH BOWL AND BASE - MARI. (VERY RARE ITEM)
157. IMP. ZIPPER LOOP MID SIZE KEROSENE LAMP - MARI (VERY SCARCE & DESIRABLE ITEM; NO BURNER - NO HARM)
158. 11 1/2" Imp. Beaded Bullseye Vase - Pur. (super color)
159. 11" Imp. Beaded Bullseye Vase - Amber (rare color)
160. 7 3/4" GEOMETRIC LONG HOBSTAR VASE - BLUE (RARE EUROPEAN ITEM & NICE)
161. 6" N Tree Trunk Vase - Mari.
162. 8 1/2" N Drapery Variant Vase - Amy. (scarce, but has base flake)
163. 11" Fenton Rustic Swung Vase - Amy.
164. 9" Westmoreland Colonial Flute Vase - Teal (scarce color)
165. WESTMORELAND FILE AND FAN STEMMED COMPOTE - P. OPAL (GOOD DARK COLOR AND HEAVY OPAL.)
166. Westmoreland Coinspot Compote - P. Opal. (heavy opal. and very scarce)

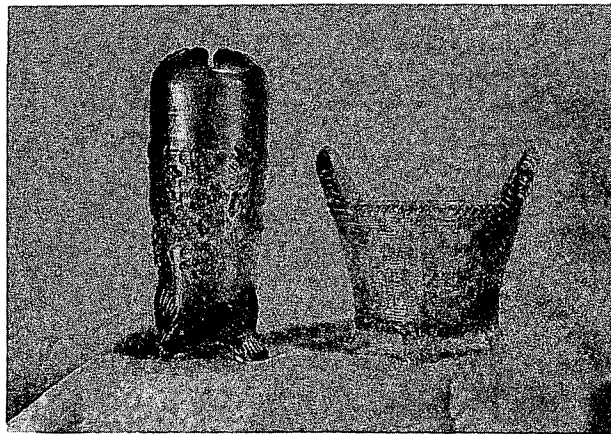
- _____ 167. 8" Westmoreland Scales Ice Cream Shaped Bowl - P. Opal. (very scarce & a nice item)
- _____ 168. **WESTMORELAND LITTLE BEADS PEDESTALED SHERBET - P. OPAL. (VERY SCARCE; ENAMELLED "SOUV. OF WASHINGTON, N.H.)**
- _____ 169. 8 3/4" Westmoreland Coin Spot Ruffled Bowl - P. Opal. (very scarce; dark marigold & heavy opal.)
- _____ 170. **6" WESTMORELAND CORINTH VASE - P. OPAL. (VERY RARE WITH GOOD HEAVY OPAL)**
- _____ 171. **7" WESTMORELAND CORINTH BOWL - BLUE OPAL (VERY SCARCE & VERY DESIRABLE; NICE)**
- _____ 172. 7" Westmoreland Corinth Bowl - Amber (scarce color)
- _____ 173. **8 1/2" WESTMORELAND SMOOTH RIB RUFFLED BOWL - BLUE OPAL (VERY SCARCE COLOR AND DESIRABLE)**
- _____ 174. **WESTMORELAND LEAF SWIRL COMPOTE - TEAL (VERY SCARCE AND DESIRABLE COLOR)**
- _____ 175. **WESTMORELAND 270 COMPOTE - MARI./MILK GLASS (VERY RARE WITH GOOD OVERLAY)**
- _____ 176. Westmoreland Strutting Peacock Covered Sugar - Amy.
- _____ 177. Westmoreland Big Basketweave & Cable Covered Sugar & Creamer - Mari.
- _____ 178. Dugan Leaf Rays Ruffled Nappy - P. Opal.
- _____ 179. Dugan Puzzle/Floral and Wheat Handled Bon Bon - P. Opal. (opal. only on tips)
- _____ 180. **N WIDE PANEL 4 LILY EPERGNE - MARI. (SUPER SCARCE; PERFECT WITH GOOD COLOR)**
- _____ 181. Dugan Starfish 2 Handled Bon Bon - P. Opal.
- _____ 182. 9" Dugan Six Petal Ruffled Bowl - P. Opal. (good opal & color)
- _____ 183. Dugan Panelled Cherries 3 ftd. Tri Cornered Crimped Bowl - P. Opal. (very scarce shape & good color)
- _____ 184. Dugan Panelled Cherries 3 ftd. Tight Crimped Bowl - P. Opal.
- _____ 185. **DUGAN HONEYCOMB ROSE BOWL - P. OPAL. (VERY RARE AND VERY DESIRABLE; NICE)**
- _____ 186. **DUGAN PODS AND POSIES FLAT PLATE WITH BASKETWEAVE EXT. - P. OPAL. (SCARCE AND VERY DESIRABLE)**
- _____ 187. Dugan Beaded Panels (open opals) Stemmed Compote - P. Opal. (very scarce)
- _____ 188. 7 1/2" Single Flower Framed Plate with Tight Crimped Edge - P. Opal. (very scarce)
- _____ 189. **9" DUGAN SOUTACHE DOMED FTD. CRIMPED EDGE BOWL - P. OPAL. (VERY RARE PATTERN WITH GOOD COLOR)**
- _____ 190. **8" DUGAN BORDER PLANTS DOME FTD. RUFFLED BOWL - P. OPAL. (VERY RARE PATTERN WITH GOOD COLOR)**
- _____ 191. **6" DUGAN SKI STAR TRI SHAPED SAUCE - P. OPAL. (VERY RARE SHAPE AND GOOD COLOR)**
- _____ 192. 9" Dugan Ski Star Domed Ftd. Tri Cornered Bowl - P. Opal. (very scarce shape)
- _____ 193. 11" Dugan Ski Star Lg. Ruffled Bowl With Compass Ext. - P. Opal.
- _____ 194. 11" Dugan Ribbed Interior - Jewelled Heart Ext. Lg. Ruffled Bowl - P. Opal.
- _____ 195. **11" DUGAN FLOWERS AND SPADES LG. RUFFLED BOWL - P. OPAL. (VERY RARE PATTERN WITH GOOD OPAL.)**
- _____ 196. Plain, Unpatterned Stemmed Ruffled Compote - P. Opal. (very odd item with good opal.)
- _____ 197. 6" Dugan Ribbed Jack in the Pulpit Vase - P. Opal.
- _____ 198. 8 1/2" Dugan Caroline Round Crimped Edge Bowl - P. Opal.
- _____ 199. Dugan Question Mark Stemmed Bon Bon - P. Opal.
- _____ 200. 8" Dugan Flowers and Frames Domed Ftd. Bowl - P. Opal. (very scarce item)
- _____ 201. 10" Dugan Twisted Rib Vase - P. Opal.
- _____ 202. 6 1/2" Interior Swirl Pinched Tri-Shaped Vase - P. Opal.
- _____ 203. 7 1/2" Dugan Single Flower Framed Hand Grip Plate - P. Opal. (scarce; has tight crimped edge)
- _____ 204. 9" Dugan Single Flower Bowl - P. Opal.
- _____ 205. **8" WESTMORELAND CAROLINA DOGWOOD ROUND BOWL - P. OPAL. (HEAVY OPAL. AND GOOD IRID.)**
- _____ 206. Dugan Holly Whirl One Handled Happy - P. Opal.
- _____ 207. 7" Dugan Six Petals Crimped Edge Bowl - P. Opal.
- _____ 208. 6" Dugan Ribbed Spittoon Pinched Shape Vase - P. Opal.
- _____ 209. **DRAGON TONGUE SHADE - MARI./MILK GLASS**
- _____ 210. **7" FENTON LIONS RUFFLED BOWL - MARI. (VERY SCARCE AND HAS VERY GOOD COLOR)**
- _____ 211. **N GREEK KEY TUMBLER - MARI. (SUPER COLOR & SCARCE)**
- _____ 212. Dugan Heavy Iris Tumbler - Pur. (super irid.)
- _____ 213. Dugan Peacock at the Fountain Tumbler - Mari.
- _____ 214. Dugan Stork and Rushes with Lattice Band Tumbler - Blue (scarce)
- _____ 215. Dugan Stock and Rushes with Lattice Band Tumbler - Mari.
- _____ 216. Fenton Milady Tumbler - Mari. (super irid. & color)
- _____ 217. Fenton Panelled Dandelion Tumbler - Mari.
- _____ 218. Dugan Maple Leaf Tumbler - Mari.
- _____ 219. Colonial Breakfast Sugar & Creamer - Mari.
- _____ 220. Unusual Colonial Large Covered Sweetmeat - Dk. Mari. (flashy irid. and very unusual)
- _____ 221. Imp. Flute Mug - Pedestaled Base - Mari.



LOTS 45 & 40



LOTS 100 - 104



LOT #125

LOT #60

Burns Auction Service
 109 East Steuben St.
 Bath, N.Y. 14810

First Class
 U.S. Postage
 Paid
 Permit #7
 Hammondsport NY

