



AUCTION SERVICE

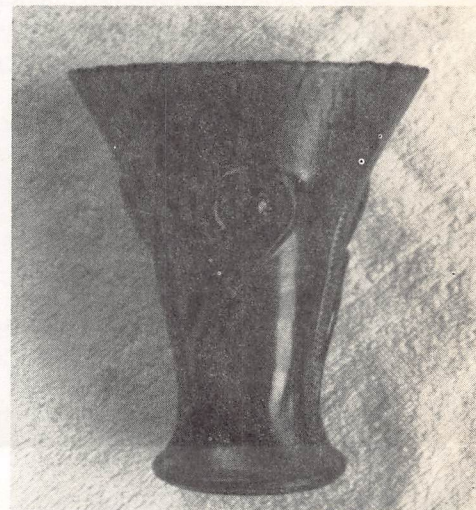
A.C.G.A. Convention Auction Thursday, July 28, 1988

10:00 a.m. (preview - prior)

at the
Penn Harris Inn
Rte. 11 & 15 South
Camp Hill, Pennsylvania 17011
(717)763-7117

We are once again pleased to present the annual auction as part of the A.C.G.A. Convention which runs from July 27th - 30th, 1988 at the Penn Harris Convention Center in Camp Hill, Pennsylvania. The glass is a combination of 3 consignors - making for a nice assortment with something for everyone.

The Penn Harris Convention Center will host the event. It's located along Routes 11 & 15, just south of downtown Harrisburg. For reservations call the motel direct at (717)763-7117, or call the A.C.G.A. President, Emma Tilton, at (614) 254-9446 for further details. It should make for an enjoyable weekend and we hope to see you all there.



LOT #25



LOT #40

Burns Auction Service

Tom Burns
109 East Steuben Street
Bath, New York 14810
(607) 776-7942

Bill Richards
44 Water Street
Poland, Ohio 44514
(216) 757-2001

Pa. License # AS-352-L

Mail Bids honored under the following conditions:

1. No deposit required. Bidders will take full responsibility to honor any and all bids we execute for them. Payment in full plus postage and handling required after notification and before we ship any item to them.
2. Items are bid on in perfect condition with average or above average iridescence OR as listed in the brochures. Bids will not be carried out when damage on an item has been found during the auction.
3. Successful bidders will be notified by collect call from the auctioneer (so be sure to include phone number).
4. Phone inquiries about the glass or any other questions are welcome.
5. All non-successful bids will receive a result summary in the mail. Results of all bids will be provided.
6. If you have some other person at the auction bidding for you, they must pay for the item before taking it.
7. Mail bids due by Noon, July, 27 **NO LATER, PLEASE!**

- | | | | | | |
|--------------|-----|---|--------------|-----|--|
| <u>22.50</u> | 1. | LBJ Hat - Ashtray - Mari. | <u>170</u> | 28. | PANELLED (STRETCH TYPE) COVERED |
| <u>45</u> | 2. | N G & C PUNCH CUP - ICE BLUE (VERY SCARCE) | | | CANDY JAR - RED (VERY SCARCE ITEM; GOLD-SILVERY IRID.) |
| <u>120</u> | 3. | STIPPLED STRAWBERRY TUMBLER - LT. MARI. (VERY RARE PATTERN WITH GOOD COLOR) | <u>130</u> | 29. | Soutache Domed Plate with Tight Crimped Edge - P. Opal. (very scarce and very desirable) |
| <u>25</u> | 4. | Lg. Westmoreland Colonial 2 Handled Pedestaled Bon Bon - Cranberry Flash (very unusual) | <u>150</u> | 30. | PRINCESS LAMP - PUR. (VERY RARE AND UNUSUAL) |
| <u>210</u> | 5. | CAMBRIDGE INVERTED STRAWBERRY POWDER JAR - DK. MARI. (VERY SCARCE WITH GOOD COLOR) | <u>35</u> | 31. | Pastel Swan - Celeste Blue |
| | | | <u>25</u> | 32. | Pastel Swan - Ice Green |
| <u>110</u> | 6. | N Peacock at the Fountain Individual Berry Bowl - Ice Blue (very scarce and desirable; good color) | <u>52.50</u> | 33. | 9" Fenton Fine Rib Vase - Green |
| <u>80</u> | 7. | Palm Beach Table Set - Creamer only - White (perfect with excellent color) | <u>475</u> | 34. | N THREE FRUITS SPATULA FTD. RUFFLED BOWL - AQUA OPAL. (SUPER COLOR AND VERY DESIRABLE; HAS TINY FLAKE ON EDGE) |
| <u>22.50</u> | 8. | Non - handled Stretch Chamberstick - Vas. | <u>40</u> | 35. | Enameled Decorated Celery Vase - Mari. Flash (unusual) |
| <u>25</u> | 9. | 11" Stretch Chop Plate, Ribbed - Celeste Blue (has gold band on edge) | <u>75</u> | 36. | Fenton Flowering Dill Hat - Amy. (very rare color for this scarce item) |
| <u>375</u> | 10. | FENTON PANTHER LG. FTD. MASTER BERRY BOWL - GREEN (VERY RARE COLOR FOR THIS PATTERN; SORTA OLIVE GREEN) | <u>325</u> | 37. | IMP. COLONIAL LADY VASE - PUR. (VERY RARE WITH AVERAGE COLOR) |
| <u>65</u> | 11. | 7 1/2" Fenton Stippled Rays Plate with Scale Band Exterior - Mari./Vas. (very rare color; has a tiny open bubble) | <u>80</u> | 38. | 9" N Three Fruits Bowl with Pie Crust Edge - Amy. |
| <u>100</u> | 12. | 8 1/2" Imp. Pansy Ruffled Bowl - Amber | <u>375</u> | 39. | FENTON RUSTIC FUNERAL VASE - BLUE (VERY SCARCE AND DESIRABLE) |
| <u>115</u> | 13. | 9" Fenton Persian Medallion Plate - Mari. (scarce) | <u>300</u> | 40. | LARGE DECO LILY BULBOUS VASE - MARI. (VERY UNUSUAL AND VERY RARE; ONLY ONE KNOWN) |
| <u>110</u> | 14. | 9" N Strawberry Plate with Basketweave Exterior - Pur. | <u>550</u> | 41. | CAMBRIDGE GIANT VENETIAN ROSE BOWL - GREEN (VERY RARE; HAS 2 CHIPS IN PATTERN) |
| <u>300</u> | 15. | N STIPPLED GOOD LUCK BOWL WITH PIE CRUST EDGE - ELEC. BLUE (DESIRABLE WITH GOOD COLOR AND IRID.) | <u>210</u> | 42. | Imp. Ribbed Morning Glory Funeral Vase - Pur. (very good color; scarce) |
| <u>170</u> | 16. | N GOOD LUCK BOWL WITH PIE CRUST EDGE - BLUE (SCARCE WITH GOOD COLOR) | <u>275</u> | 43. | N ACORN BURRS COVERED BUTTER DISH - AMY. (VERY SCARCE; NICE) |
| <u>90</u> | 17. | DUGAN RIBBED JACK IN THE PULPIT VASE - P. OPAL. (VERY NICE AND DESIRABLE) | <u>150</u> | 44. | N G & C Covered Butter Dish - Green (scarce and nice) |
| <u>165</u> | 18. | DUGAN PULLED LOOP SWUNG VASE - AQUA/MARI. (SUPER COLOR AND VERY RARE) | <u>500</u> | 45. | M'BURG BERMHEIMER / MANY STARS LG. RUFFLED BOWL - BLUE (VERY RARE - HAS LACK OF IRID. IN CENTER) |
| <u>165</u> | 19. | IMP. RIPPLE FUNERAL VASE - MARI. | <u>625</u> | 46. | 9" N HEART AND FLOWERS PLATE - PUR. (VERY DESIRABLE ITEM WITH GOOD COLOR) |
| <u>185</u> | 20. | FENTON KNOTTED BEADS SWUNG VASE - MARI./VAS. (VERY RARE COLOR FOR THIS PATTERN) | <u>225</u> | 47. | 9" Dugan Apple Blossom Twigs Plate - Blue (very scarce) |
| <u>105</u> | 21. | FENTON KNOTTED BEADS SWUNG VASE - AMBER (RARE COLOR AND NICE) | <u>120</u> | 48. | 6" Fenton Pine Cone Plate / Saucer - Green (very scarce) |
| <u>105</u> | 22. | Dugan Basketweave Swung Vase - White (very scarce) | <u>800</u> | 49. | 10" IMP. HEAVY GRAPE CHOP PLATE - AMBER (SCARCE COLOR) |
| <u>145</u> | 23. | N DRAPERY VASE - ICE GREEN (VERY SCARCE WITH GOOD COLOR) | <u>650</u> | 50. | 9" FENTON ORANGE TREE RUFFLED BOWL - REVERSE AMBERINA/RED (VERY RARE AND UNUSUAL; VERY NICE) |
| <u>75</u> | 24. | N Tree Trunk Swung Vase - White (scarce) | <u>110</u> | 51. | N G & C Spooner - Green (manuf. roughness on one flute) |
| <u>2500</u> | 25. | N TORNADO FLARED WHIMSEY VASE - WISTERIA STRETCH (EXTREMELY RARE, ONE OF A KIND; SUPER COLOR) | <u>75</u> | 52. | MAPLE LEAF CUSTARD GLASS TUMBLER - GREEN WITH GOLD DECORATION (WEAK IRID.; UNUSUAL AND BEAUTIFUL) |
| <u>325</u> | 26. | N CORN VASE - PUR. (AVERAGE COLOR) | <u>22.50</u> | 53. | N Grape and Gothic Tumbler - Green (crack on base) |
| <u>125</u> | 27. | FENTON LG. FLARED STRETCH VASE - RED (SUPER COLOR AND SUPER RED) | | | |

<u>35</u>	54.	Westmoreland Scales Finger Bowl and under-plate - Amy.	<u>150</u>	90.	6 1/2" FENTON HORSEHEAD COLLAR BASE BOWL - COBALT BLUE (NICE)
<u>55</u>	55.	3 pc. Scale Band Water Set - Mari. (pitcher base mended)	<u>130</u>	91.	7 pc. Fenton Apple Tree Water Set - Mari. (small crack near handle on pitcher)
<u>55</u>	56.	LG. FOSTORIA BROCADED PALMS COVERED COMPOTE - PINK (SCARCE)	<u>40</u>	92.	8 1/2" Dugan Windflower Ruffled Plate - Mari.
<u>65</u>	57.	N G & C Tobacco Jar - Pur. (new; souvenir Presznick)	<u>60</u>	93.	8 1/2" N GOOD LUCK RUFFLED BOWL WITH RIBBED EXTERIOR - MARI. *
<u>350</u>	58.	4 pc. G & C Table Set - Mari. (small nicks inside cover of sugar)	<u>225</u>	94.	N GOOD LUCK BOWL WITH PIE CRUST EDGE - MARI. (SUPER COLOR)
<u>20</u>	59.	8 1/4" Westmoreland Pillow and Sunburst Ruffled Bowl - Lt. Amber	<u>75</u>	95.	Fenton Two Fruits divided Bon Bon - Mari. (scarce)
<u>37.50</u>	60.	8 1/2" Smooth Rays Ruffled Bowl - Teal Blue (small nick on rim)	<u>40</u>	96.	Eng. Curved Star Cathedral Chalice - Mari.
<u>95</u>	61.	Frosted Iris Electric Shade on Brass Gooseneck Table Lamp - Yellow Tint	<u>70</u>	97.	10 1/2" N THIN RIB VARIANT VASE - AQUA OPAL. (A REAL BEAUTY)
<u>85</u>	62.	Starflower Variant, Flowers Panels Electric Shade - Mari.	<u>90</u>	98.	9" Dugan Pony Ruffled Bowl - Mari.
<u>70</u>	63.	7 pc. Imp. Tree Bark Water Set - Mari. (pitcher covered, one tumbler mended)	<u>130</u>	99.	FENTON FERN PANELS HAT - CHERRY RED (SCALING ON BASE AND OPEN BUBBLE ON INSIDE BASE BUT A VERY RARE PATTERN IN THIS COLOR)
<u>90</u>	64.	Dugan Fishnet Ruffled Epergne - P. Opal. (good color; small crack inside)	<u>160</u>	100.	KITTENS BANANA BOWL - MARI.
<u>80</u>	65.	8 1/2" N Strawberry Ruffled Bowl with Basket-weave Exterior - Pur.	<u>30</u>	101.	8" Imp. Embossed Scroll Ruffled Bowl - Aqua/Green (odd tint)
<u>35</u>	66.	Imp. #3 Flute Toothpick Holder - Mari. (some wear)	<u>190</u>	102.	N Peacocks on Fence Bowl with Pie Crust Edge - Smokey Lavender / Amy. (super; rare color; one outer tip chipped off)
<u>50</u>	67.	8 1/2" Dugan Panelled Cherry Ruffled Bowl - Pur.	<u>60</u>	103.	9" Imp. Open Rose Flat Plate - Mari.
<u>200</u>	68.	7 pc. Fenton Butterfly and Berry Water Set - Cobalt Blue (pitcher cracked)	<u>1050</u>	104.	FENTON 1914 PARKERSBURG B.P.O.E. PLATE - BLUE (RARE WITH SUPER IRID. AND GREAT COLOR)
<u>75</u>	69.	ROBT. HANSEN DAISY AND BUTTON ROSE BOWL - COBALT BLUE	<u>40</u>	105.	6 1/4" Imp. Grape Plate - Mari. (good dark color)
<u>150 x 4</u>	70.	(4) HANSEN PAPERWEIGHTS (NOT CARNIVAL; INITIALED H; UNUSUAL; TO BE SOLD SEPARATELY)	<u>270</u>	106.	6 1/4" IMP. GRAPE PLATE AQUA TEAL (EXTRA NICE)
<u>80</u>	71.	Imp. Windmill Milk Pitcher - Mari.	<u>70</u>	107.	7 1/4" Dugan Flower and Beads Plate - P. Opal. (opal. all the way; great color)
<u>120</u>	72.	7 pc. Imp. Windmill Water Set - Mari	<u>55</u>	108.	6 1/2" Fenton Pinecone Plate - Mari. (nice color)
<u>100</u>	73.	N BUSHEL BASKET - BLUE OPAL. (NOT CARNIVAL; BEAUTIFUL)	<u>195</u>	109.	N Peacock at the Urn Master Ice Cream Bowl - Ice Blue (silvery irid.; good sized chip on collar base)
<u>100</u>	74.	N DRAPERY ROSE - BLUE OPAL. (NOT CARNIVAL, SCARCE)	<u>250</u>	110.	MELLON RIBBED CUSPIDOR - MARKED HEISEY - AMY. (NICE)
<u>95</u>	75.	Fenton Breakfast Set, Sugar and Creamer - Mari. (pattern - ?) <i>Orange Tree</i>	<u>1150</u>	111.	N RASPBERRY MILK PITCHER - WHITE (RARE WITH GREAT COLOR AND IRID.)
<u>50</u>	76.	16 1/2" Fenton Rustic Funeral Vase - Mari. <i>Blue</i> (bruise on one flame; great color)	<u>90</u>	112.	7 1/2" N G & C 6 Ruffled Bowl with Beads and Flower on Exterior on Collar Base - Pur. (very different and great color)
<u>110</u>	77.	9 1/2" Fenton Holly Plate - White (bruise on collar base rim)	<u>85</u>	113.	Westmoreland Estate Mug - Mari.
<u>65</u>	78.	U.S. Glass 1910 Shriner Champagne - Clear	<u>950</u>	114.	N DANDELION KNIGHTS TEMPLAR MUG - ICE GREEN (RARE AND SUPER)
<u>55</u>	79.	8" Dugan Single Flowers Framed Handgrip Bowl - P. Opal.	<u>225</u>	115.	N G & C Cologne Bottle and Stopper - Pur. (nice color)
<u>60</u>	80.	7 1/2" Fenton Leaf Chain Flat Plate - Mari.	<u>225</u>	116.	FENTON STAG AND HOLLY GIANT ROSE BOWL - LT. BLUE ON MARI. (VERY LIGHT BLUE SHOWS ON FEET AND COLLAR BASE; VERY DIFFERENT)
<u>235</u>	81.	7 pc. Panther Berry Set - Mari. (lg.- ruffled, small flared)	<u>50</u>	117.	6" Stretch Compote - Wisteria (5 3/4" across, file pattern on stem; very different and great color)
<u>270</u>	82.	6" M'burg Peacock at the Urn Ruffled Bowl - Pur. (no beads or bee; very scarce)	<u>50</u>	118.	Imp. Pansy Nappy - Amber (great color and irid.)
<u>75</u>	83.	6" Dugan Four Flowers Ruffled Bowl - P. Opal. (rare)	<u>75</u>	119.	Dugan Harvest Flower Tumbler - Mari. (nice color for this pattern)
<u>60</u>	84.	6 1/4" M'burg Blackberry Wreath Ruffled Bowl - Green	<u>50</u>	120.	Orange Tree Orchard Tumbler - Mari. (extra nice dark color)
<u>55</u>	85.	N Singing Birds Mug - Pur.	<u>10</u>	121.	3 1/2" Flared Out Juice Glass or Tumbler - Red Flash on Amberina
<u>100</u>	86.	6 1/4" N G & C Plate - Pur. (scarce size)	<u>40</u>	122.	Bouquet Tumbler - Blue (has very minor pinhead at rim)
<u>40</u>	87.	Imp. Octagon Wine Decanter and Stopper - Mari. (some damage on stopper base).	<u>400</u>	123.	M'BURG PERFECTION TUMBLER - GREEN (RARE; SUPER RADIUM AND COLOR)
<u>55</u>	88.	11" Fenton Two Flowers ftd. Ruffled Bowl - Cobalt Blue (minor bruise on one foot)	<u>65</u>		<i>Purple Fisherman's mug</i>
<u>130</u>	89.	FENTON HORSEHEAD FTD. ROSE BOWL - MARI.			

- 325 124. N PEACOCK AT THE FOUNTAIN TUMBLER - GREEN (BEAUTIFUL COLOR AND VERY ODD TINT)
- 175 125. IMP. 474 TUMBLER - VIOLET BLUE (SUPER COLOR AND IRID.)
- 200 126. 9 1/4" M'burg Vintage Ice Cream Bowl with Hobnail Exterior - Green (super color; collar base has been ground)
- 225 127. IMP. GRAPE WATER PITCHER - PUR. (SUPER-SUPER COLOR)
- 245 128. N Beaded Cable Rose Bowl - Pur. (great color and irid.)
- 55 129. Fenton Leaf Chain Plate - Green (large, long open bubble on one tip; silvery irid.)
- 27.50 130. Stemmed Salt Dip - Mari. (nice color)
- 25 131. Master Salt - Mari. (nice color)
- 100 132. 8 1/2" N CHERRY AND CABLE MASTER BERRY BOWL - MARI. (GOLD TRIM AROUND EDGE; VERY DIFFERENT AND HARD TO FIND)
- 22.5 133. 8 pc. Imp. 474 Punch Set - Mari. (real good color)
- 15 134. Panelled 2 lb. Candy Jar - Olive Green (super color and irid.)
- 22.50 135. Panelled 1 lb. Candy Jar - Olive Green (super color and irid.)
- 10 Cranberry Flash Flute Tumbler
- 130 136. FENTON KITTENS 4 SIDED BOWL - MARI. (GOOD STRIKE)
- 380 137. ENAMELED SWALLOW TANKARD AND 4 TUMBLERS (A VERY RARE ENAMELED SET; SUPER ARTWORK)
- 135 138. Fenton Magnolia and Drape Enameled Water Pitcher - Mari. (drape interior; nice)
- 110 139. Fenton Lotus Enameled Water Pitcher with Draped Interior - Mari. (nice)
- 25 140. Triad Hat Pin - Pur. (great color)
- 110 141. FENTON ROSE SPRAY JACK IN THE PULPIT COMPOTE - WHITE (GOOD IRID.)
- 45 142. 7" N Drapery Vase - Mari. (good dark color)
- 85 143. 13" Bamboo Vase - White (very different)
- 65 144. 8 1/2" Imp. Ripple Vase - Amy. (super color and irid.)
- 55 145. 9" Imp. Pansy 8 Ruffled Bowl - Amy. (super color)
- 55 146. 12 1/4" Ripple Vase - Mari. (super color and irid.)
- 55 147. 15 1/4" Ripple Vase - Mari. (good color and different)
- 95 148. 16 1/2" Diamond and Rib Vase with Tight Candy Ribbon Edge - Blue (very different) *Point Columns*
- 145 149. 2 Row Jack in the Pulpit Basket - Red (good color, but has crack at top edge)
- 40 150. Imp. Star Medallion Stemmed Sherbet with Scaloped Base - Mari. (scarce item)
- 17.50 King's Crown Goblet - M

Burns Auction Service

109 East Steuben St.
Bath, N.Y. 14810

First Class
U.S. Postage
Paid
Permit #7
Hammondsport NY

*