



AUCTION • SERVICE

Carnival Glass Auction

Saturday, June 11, 1988

10:00 a.m.

Previews - Friday evening, 6 pm - 9 pm

Saturday morning, 8 am - 10 am

at the

Coliseum - Holiday Inn

4742 Brecksville Road

Richfield, Ohio 44286

Exit 11 off Ohio Turnpike

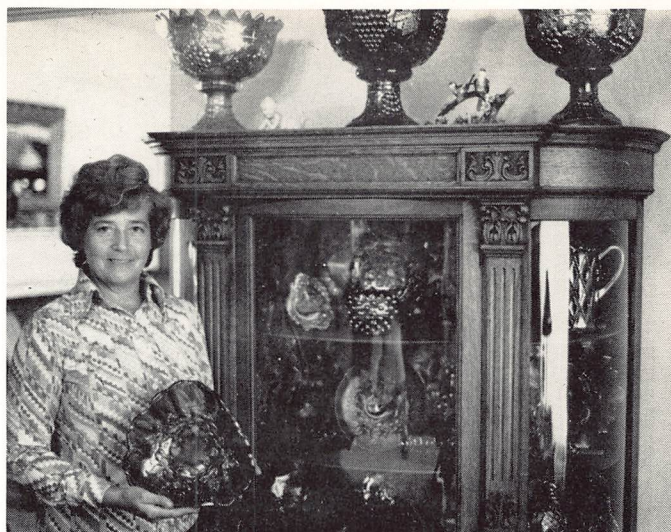
(216) 659-6151



This is one auction I've been looking forward to for a long time. I've known Gordon and Charlotte for a number of years and have always hoped to have the privilege of selling their glass. Well, *here it is!* They have decided to part with a number of their pieces which will make for a great auction...one I know *everyone* should attend.

The rarity and diversity makes for one of the best quality auctions we've performed to date. I hope as many of you will attend as possible - it will be worth your time.

The Coliseum-Holiday Inn in Richfield, Ohio will host the event. Reservations can be made by calling the motel at (216)659-9151. Be sure to mention the Burns Auction Service for a special rate. Mail bids are due by June 10th.



Mail Bids honored under the following conditions:

1. No deposit required. Bidders will take full responsibility to honor any and all bids we execute for them. Payment in full plus postage and handling required after notification and before we ship any item to them.
2. Items are bid on in perfect condition with average or above average iridescence OR as listed in the brochures. Bids will not be carried out when damage on an item has been found during the auction.
3. Successful bidders will be notified by collect call from the auctioneer (**so be sure to include phone number**).
4. Phone inquiries about the glass or any other questions are welcome.
5. All non-successful bids will receive a result summary in the mail. Results of all bids will be provided.
6. If you have some other person at the auction bidding for you, they must pay for the item before taking it.
7. Mail bids due by June 10. **NO LATER, PLEASE!**

Burns Auction Service

Tom Burns
109 East Steuben Street
Bath, New York 14810
(607) 776-7942

Bill Richards
44 Water Street
Poland, Ohio 44514
(216) 757-2001

- | | |
|--|--|
| <p><u>100</u> 1. Fenton Kittens 4 sided Ruffled Bowl - Mari. - (scarce)</p> <p><u>175</u> 2. Fenton Kittens Cereal Bowl - Mari. - (scarce)</p> <p><u>170</u> 3. Fenton Kittens Squatty Toothpick Holder - Mari. (scarce)</p> <p><u>150</u> 4. Fenton Kittens 2 sided Banana Dish - Dk. Mari. (scarce)</p> <p><u>450</u> 5. FENTON KITTENS SAUCER - LT. AMY./MARI. (VERY SCARCE COLOR)</p> <p><u>300</u> 6. Fenton Kittens Cup and Saucer - Dk. Mari. (very scarce)</p> <p><u>225</u> 7. Fenton Kittens Plate - Lt. Mari (very scarce)</p> <p><u>120</u> 8. Imperial Propeller Small Ruffled Compote - Pur. (very rare color for this pattern; super)</p> <p><u>65</u> 9. N Panelled Holly 2 Handled Bon Bon - Green</p> <p><u>4500</u> 10. 8 1/2" - 9" FENTON PLAID RUFFLED BOWL - RED (EXTREMELY RARE ITEM; SUPER RED; GOOD IRID.)</p> <p><u>850</u> 11. 8 1/2" - 9" FENTON DRAGON & LOTUS RUFFLED BOWL - RED (GOOD RED WITH SUPER IRID.)</p> <p><u>1100</u> 12. 8 1/2" - 9" FENTON PERSIAN MEDALLION RUFFLED BOWL - RED (VERY RARE ITEM; HAS 1/2" FLAKE ON BASE)</p> <p><u>1300</u> 13. 7 3/4" FENTON TWO FLOWERS SPATULA FTD. RUFFLED BOWL - RED (EXTREMELY RARE; HAS THE TINIEST BRUISE ON THE KNOB UNDER ONE FOOT)</p> | <p><u>750</u> 14. 7 1/2" - 7 3/4" FENTON PEACOCK & GRAPE SPATULA FTD. RUFFLED BOWL - RED (VERY RARE AND DESIRABLE; NICE)</p> <p><u>450</u> 15. 7" FENTON HORSEHEAD MEDALLION ODD SHAPE RUFFLED BOWL - AMBERINA (VERY RARE PATTERN WITH AN ODD SHAPE)</p> <p><u>500</u> 16. 6 1/2" - 7 1/2" FENTON ACORN RUFFLED BOWL - RED (VERY RARE; HAS AN SWIRL SLAG EFFECT; UNUSUAL)</p> <p><u>850</u> 17. 6 1/2" - 7 1/2" FENTON G & C RUFFLED BOWL - RED (VERY RARE AND HAS GOOD COLOR)</p> <p><u>425</u> 18. 5 3/4" - 6 1/2" FENTON STIPPLED RAYS RUFFLED SAUCE - RED (GOOD RED COLOR; VERY DESIRABLE)</p> <p><u>200</u> 19. 6" FENTON STIPPLED RAYS ICE CREAM SHAPED SAUCE - REVERSE AMBERINA (VERY ODD COLOR & VERY DESIRABLE)</p> <p><u>400</u> 20. FENTON HOLLY RUFFLED HAT - RED (EXCELLENT COLOR AND IRID. - A SUPER ITEM)</p> <p><u>675</u> 21. FENTON BLACKBERRY SPRAY RUFFLED HAT - REVERSE AMBERINA OPAL. (A SUPER RARE COLOR AND VERY DESIRABLE)</p> <p><u>325</u> 22. FENTON BLACKBERRY SPRAY SQUARE RUFFLED HAT - RED (VERY SCARCE, GOOD RED; SILVERY, GOLD IRID.)</p> |
|--|--|

- 400 23. IMPERIAL INTERIOR PANELLED STRETCH CREAMER - RED (VERY GOOD COLOR & IRID.; TOUGH SHAPE)
- 450 24. 10" FENTON FINE RIB SWUNG VASE - RED (VERY GOOD COLOR & IRID.; NICE ITEM)
- 500 25. IMPERIAL THUMBPRINT AND OVALS VASE - PURPLE (SUPER COLOR AND IRID.; VERY NICE)
- 210 26. 14 1/2" IMPERIAL RIPPLE MID-SIZE FUNERAL VASE - AMBER (SUPER ITEM; HAS 4 3/4" BASE & A 9" OBLONG TOP)
- 85 27. Woodpecker Wall Vase - Mari.
- 200 28. 5 1/2" FISH FACE VASE - DK. MARI. (VERY UNUSUAL; I'VE NEVER SEEN ANOTHER)
- 170 29. DUGAN NAUTILUS SWUNG VASE - PUR. (VERY RARE AND HAS VERY GOOD COLOR)
- 500 30. N CORN VASE - DK. GREEN (SUPER GREEN WITH VERY GOOD IRID.)
- 400 31. N CORN VASE - PASTEL MARI. (VERY RARE COLOR AND TINT; NICE)
- 450 32. N CORN VASE - WHITE/SUN COLORED TINT (VERY ODD TINT - SUN COLORED AMYTHEST)
- 280 33. 10 1/2" N DIAMOND POINT VASE - DK. ICE GREEN (VERY NICE COLOR & VERY DESIRABLE)
- 70 34. 11" N Diamond Point Vase - White (very scarce)
- 675 35. N DAISY AND DRAPE FTD. VASE - AQUA OPAL. (RARE AND VERY DESIRABLE)
- 400 36. N DAISY AND DRAPE FTD. VASE - BLUE (VERY SCARCE AND VERY DESIRABLE)
- 90 37. 13" N Tree Trunk Mid size Funeral Vase - Pur. (nice)
- 275 38. 14" N THIN RIB MID SIZE FUNERAL VASE - SAPPHIRE BLUE (VERY RARE COLOR AND NICE)
- 140 39. 10 1/2" N THIN RIB SWUNG VASE - ICE BLUE (VERY RARE COLOR)
- 550 40. 10 - 10 1/2" FENTON APRIL SHOWERS SWUNG VASE - AMY. OPAL. (EXTREMELY RARE COLOR AND VERY DESIRABLE)
- 175 41. 7 1/2 - 8 1/2" FENTON BUTTERFLY AND BERRY SWUNG VASE - AQUA (EXTREMELY RARE COLOR AND VERY NICE)
- 625 42. 18 1/2 - 18 3/4" FENTON RUSTIC FUNERAL VASE - AMY. (A SUPER ITEM; HAS 9" OPENING AT TOP)
- 120 43. 10" Fenton Ten Mums 6 Ruffled Bowl - Amy. (super color and irid.)
- 160 44. 8 3/4" Fenton Ten Mums Deep Round Bowl with Tight Candy Ribbon Edge - Blue (scarce shape and very nice)
- 235 45. N ROUND BUSHEL BASKET - ICE GREEN (VERY SCARCE AND DESIRABLE)
- 90 46. N Round Bushel Basket - Mari.
- 130 47. N Eight Sided Bushel Basket - White
- 120 48. N Three Fruit Stippled Plate - Mari (very good color)
- 2900 49. 9 1/4" N POPPY SHOW PLATE - GREEN (EXTREMELY DESIRABLE ITEM; PERFECT & SUPER)
- 650 50. N POPPY SHOW RUFFLED BOWL - BLUE (SUPER COLOR & IRID.; PERFECT)
- 280 51. N ROSE SHOW RUFFLED BOWL - MARI (GOOD DEEP COLOR; VERY SCARCE)
- 1600 52. 9" N ROSE SHOW VARIANT PLATE WITH RIBBED EXT. - BLUE (EXCELLENT COLOR; A SUPER ITEM)
- 425 53. N ROSE SHOW VARIANT RUFFLED BOWL - DK. MARI. (SUPER COLOR AND VERY DESIRABLE)
- 1200 54. 9" N HEART AND FLOWERS PLATE WITH RIBBED EXTERIOR - GREEN (EXTREMELY RARE AND VERY DESIRABLE)
- 625 55. 9" N GREEK KEY PLATE WITH BASKETWEAVE EXTERIOR - GREEN (A VERY RARE ITEM; GOOD COLOR)
- 475 56. 9" N GREEK KEY PLATE WITH BASKETWEAVE EXTERIOR - MARI. (VERY SCARCE ITEM; HAS GOOD COLOR)
- 425 57. N WISHBONE FTD. PLATE - PUR. (VERY DESIRABLE ITEM)
- 95 58. N Wishbone ftd. Ruffled Bowl - Green
- 130 59. 9" N G & C Variant Plate with Basketweave Exterior - Pur. (good color)
- 3100 60. 9" N G & C VARIANT STIPPLED PLATE WITH RIBBED EXTERIOR - AQUA TEAL (A SUPER RARE ITEM WITH VERY NICE COLOR AND IRID.)
- 375 61. N G & C VARIANT STIPPLED PLATE WITH OLD ROSE DISTILLERY ADV. - GREEN (SCARCE WITH VERY GOOD IRID.)
- 55 62. 8 1/2" N G & C Bowl with Basketweave exterior - Green
- 225 63. 10" N G & C Large Ruffled Master Ice Cream Bowl - White (scarce shape for this color; basketweave exterior)
- 600 64. N G & C PERFUME BOTTLE AND STOPPER - PUR. (VERY RARE; SUPER COLOR)
- 1800 65. N G & C HATPIN HOLDER - WHITE (SUPER, SUPER RARE; PERFECT WITH GOOD COLOR)
- 950 66. N G & C COVERED POWDER JAR - WHITE (SUPER RARE; SUPER COLOR & PERFECT)
- 850 67. N G & C LARGE DRESSER TRAY - WHITE (VERY, VERY RARE AND PERFECT)
- 600 68. N G & C SMALL PIN TRAY - WHITE (EXTREMELY RARE ITEM; NICE & PERFECT)
- 200 69. DUGAN VINTAGE GRAPE COVERED POWDER JAR - WHITE (SUPER RARE AND PERFECT)
- 300 70. DUGAN VINTAGE GRAPE COVERED POWDER JAR - PUR. (VERY SCARCE COLOR & SUPER IRID.)
- 400 71. FENTON ORANGE TREE COVERED POWDER JAR - GREEN (EXTREMELY RARE AND VERY GOOD COLOR)

- 310 72. 8" FENTON ORANGE TREE ICE CREAM SHAPED BOWL - GREEN (HAS TRUNK CENTER; SUPER AND VERY RARE) 350 97. N HEART AND FLOWERS STEMMED COMPOTE - BLUE (VERY SCARCE WITH GOOD COLOR)
- 275 73. FENTON ORANGE TREE LOVING CUP - MARI. (SUPER COLOR & PERFECT) 450 98. N SUNFLOWER SPATULA FTD. RUFFLED BOWL - ELEC. BLUE (SUPER COLOR; AND VERY DESIRABLE)
- 55 74. Fenton Orange Tree Stemmed Goblet - Blue (very scarce) 65 4200 99. 6 1/4" M'burg Cosmos Ice Cream Shaped Bowl - Green (radium, nice)
- 65 75. Fenton Sailboat Wine Glass - Blue (very scarce and has good detail) 4200 100. 11" M'BURG HANGING CHERRIES CHOP PLATE - MARI. (SUPER RARE ITEM - ONE OF A KIND; SATINY AND NICE)
- 22.50 76. Fenton Sailboat Wine Glass - Mari. 185 101. 10" M'burg Hanging Cherries Ice Cream Bowl - Amy (Satiny, good irid.)
- 27.50 77. Fenton Wine and Roses Stemmed Goblet - Mari. 225 102. 10" M'burg Hanging Cherries Ice Cream Bowl - Green (satiny, good irid.)
- 225 78. LINCOLN DRAPE (OR RIBBED DRAPE) WINE GLASS - LT. MARI. (VERY RARE, ONLY ONE I'VE SEEN) 190 103. 9 3/4" M'burg Hanging Cherries Ice Cream Bowl - Mari. (satiny, good irid.)
- 175 79. N STIPPLED ROSE WREATH 2 HANDLED BON BON - PUR. (VERY RARE ITEM; NICE) 19000 104. 7 1/2" M'burg Hanging Cherries Six Ruffled Bowl - Amy (super radium irid; super color)
- 425 80. N DANDELION MUG - AQUA OPAL. (VERY RARE WITH SUPER COLOR AND OPAL.) 900 105. 7 1/2" M'BURG HANGING CHERRIES SIX RUFFLED BOWL - BLUE (SUPER RARE COLOR FOR THIS ITEM; VERY NICE)
- 350 81. N DANDELION MUG - BLUE (VERY RARE COLOR; SILVERY, GOLD IRID.) 75 106. 7 1/4" M'burg Hanging Cherries Ice Cream Shaped Bowl - Green (nice satiny color and irid.)
- 375 82. N DANDELION MUG - DK. MARI (SUPER COLOR AND IRID.; VERY NICE) 350 107. 9 1/2" M'BURG NESTING SWAN RUFFLED BOWL - GREEN (SUPER RADIUM FINISH AND GOOD COLOR)
- 225 83. 8 3/4" N NIPPON BOWL WITH PIE CRUST EDGE AND BASKETWEAVE EXTERIOR - WHITE (VERY SCARCE AND NICE) 375 108. 9 1/4" M'burg Nesting Swan Ruffled Bowl - Amy. (super radium, and super color)
- 216 84. 8 3/4" N Rosette ftd. Ruffled Bowl - green 110 109. 9 1/2" M'burg Nesting Swan Ruffled Bowl - Mari. (super radium; has small flake on edge)
- 500 85. N PEACOCK AT THE URN LARGE ICE CREAM BOWL - WHITE (VERY SCARCE AND HAS SUPER COLOR) 1950 110. M'BURG PEACOCK AT THE URN LARGE RUFFLED COMPOTE - GREEN (SUPER, SUPER SATINY IRID. & VERY RARE)
- 165x3 86. (3) N PEACOCK AT THE URN IND. ICE CREAM BOWLS - WHITE (SUPER COLOR AND THESE ARE TOUGH TO FIND) 750 111. 10" M'BURG PEACOCK AT THE URN LARGE ICE CREAM BOWL - AMY. (SUPER, SUPER SATINY IRID. & VERY RARE)
- 1150 87. N PEACOCKS RUFFLED BOWL - AQUA (SUPER, SUPER GREEN IRID. ON RARE BASE COLOR) 2600 112. 8 3/4" M'BURG PEACOCK AT THE URN RUFFLED BOWL - BLUE (SUPER, SUPER SATINY IRID. & EXTREMELY RARE)
- 375 88. N PEACOCKS PLATE - ICE GREEN (VERY SCARCE AND HAS GOOD COLOR) 150 113. 9" M'burg Peacock at the Urn Six Ruffled Bowl - Mari. (super satiny and nice)
- 850 89. N PEACOCKS PLATE - PUR. (VERY SCARCE WITH SUPER COLOR) 650 114. 9 3/4" M'BURG PEACOCK AT THE URN VARIANT RUFFLED BOWL - AMY. (SUPER RADIUM AND EXCELLENT COLOR)
- 600 90. N IVY TOWN PUMP - PUR. (VERY RARE AND DESIRABLE; GOOD COLOR) 600 115. 6" M'BURG PEACOCK AT THE URN PLATE - AMY. (SUPER SATINY AND VERY RARE)
- 500 91. N DAISY AND PLUME 3 FTD. RUFFLED CANDY DISH WITH BERRY INTERIOR - ICE GREEN (VERY RARE WITH GOOD COLOR; 2 SMALL FLAKES ON FEET) 75 116. 7 1/2" M'burg Blackberry Wreath Six Ruffled Bowl - Green (nice radium finish)
- 750 92. N STRAWBERRY STIPPLED RUFFLED BOWL - ICE GREEN (HAS SUPER COLOR & IRID.; VERY RARE) 110 117. 9 3/4" M'burg Blackberry Wreath Ice Cream Shaped Bowl - Lt. Mari. (nice radium finish)
- 1000 93. N G & C FTD. PLATE WITH MEANDER EXTERIOR - ICE GREEN (SUPER COLOR AND IN PERFECT CONDITION) 180 118. 10" M'burg Blackberry Wreath Ice Cream Shaped Bowl - Green (satiny finish)
- 165 94. 9" N Good Luck Bowl with Basketweave exterior - Mari. (good color) 300 119. 9 1/2" M'BURG BLACKBERRY WREATH TRI-CORNERED BOWL - GREEN (SUPER RADIUM FINISH & QUALITY)
- 2100 95. N RASPBERRY MILK PITCHER - ICE BLUE (ABSOLUTELY SUPER ITEM; EXTREMELY RARE) 400 120. 9 - 9 1/2" M'BURG WHIRLING LEAVES TRI-CORNERED BOWL WITH CRIMPED EDGE - GREEN (SUPER RADIUM FINISH & QUALITY)
- 900 96. N HEART AND FLOWERS STEMMED COMPOTE - ICE GREEN (VERY RARE AND DESIRABLE; AVERAGE IRRID.)

- 250 121. M'BURG WHIRLING LEAVES SIX RUFFLED BOWL - LT. VAS./MARI. (RADIUM FINISH AND A VERY RARE ITEM)
- 95 122. 9 3/4" M'burg Primrose Six Ruffled Bowl - Amy. (radium finish, nice)
- 80 123. 9 1/2" M'burg Primrose Six Ruffled Bowl - Dk. Mari. (radium finish, nice)
- 45 124. 8 1/2" M'burg Rays and Ribbons Deep Round Bowl - Green (radium finish)
- 70 125. 9 3/4" M'burg Rays and Ribbons Six Ruffled Bowl - Amy. (radium finish)
- 80 126. M'burg Peacock Tail Variant Compote - Green (radium finish)
- 35 127. M'burg Peacock Tail Variant Compote - Dk. Mari. (radium finish) *damage*
- 130 128. M'burg Boutonniere Compote - Amy. (radium finish)
- 110 129. M'burg Boutonniere Compote - Mari. (radium finish)
- 140 130. 6" Fenton Persian Medallion Plate with Orange Tree exterior - Blue (a very scarce color)
- 70 131. 6" Fenton Cherry Circles Plate with Orange Tree exterior - Mari.
- 240 132. 5 1/2 - 6" Field Thistle Plate - Mari. (very scarce item)
- 40 133. 7" Fenton Stippled Rays Plate with Scale Band exterior - Mari.
- 85 134. 7 1/2 - 8" Fenton Leaf Chain Plate - Mari.
- 150 135. 7 1/2 - 8" Fenton Horsehead Medallion Plate - Mari. (scarce color)
- 70 136. 7 1/2" Imp. Heavy Grape Plate - Mari.
- 45 137. 6 1/4 - 6 1/2" Imp. Grape Flat Plate - Lime Green (odd tint)
- 25 138. 6 1/4 - 6 1/2" Imp. Grape Flat Plate - Mari.
- 85 139. 6" Imp. Star and File Plate - Mari. (scarce)
- 300 140. WESTMORELAND 270 COMPOTE - BLUE OPAL. (A SCARCE AND DESIRABLE ITEM)
- 225 141. WESTMORELAND 270 COMPOTE - BLUE OPAQUE (VERY SCARCE COLOR AND PERFECT)
- 55 142. Westmoreland 270 Compote - P. Opal. (very scarce)
- 90 143. 5" Tall Westmoreland Coin Spot Compote - P. Opal. (scarce)
- 450 144. 8" FENTON PEACOCK AND GRAPE SPATULA FTD. RUFFLED BOWL - P. OPAL. (SCARCE AND VERY DESIRABLE)
- 200 145. 7 3/4" FENTON PEACOCK AND GRAPE ICE CREAM SHAPED SPATULA FTD. BOWL - LIME GREEN OPAL. (VERY RARE COLOR AND VERY DESIRABLE)
- 275 146. 7 3/4" WESTMORELAND COIN SPOT DEEP ROUND BOWL - BLUE OPAL. (VERY RARE COLOR & VERY DESIRABLE)
- 145 147. 9" WESTMORELAND SMOOTH RIB RUFFLED BOWL - BLUE OPAL. (VERY SCARCE)
- 275 148. 5" WESTMORELAND HOBSTAR FRUIT RUFFLED BOWL - BLUE OPAL. (VERY DESIRABLE ITEM AND HAS GOOD COLOR)
- 400 149. 6 1/2 - 7" FENTON VINTAGE GRAPE RUFFLED BOWL - AQUA OPAL. (VERY RARE AND UNUSUAL)
- 3000 150. 9" N GRAPE AND CABLE STIPPLED BOWL WITH PIE CRUST EDGE - AQUA OPAL. (SUPER, SUPER COLOR & QUALITY OPAL. - A FANTASTIC EXAMPLE)
- 1100 151. 8 1/2 - 9" N EMBROIDERED MUMS RUFFLED BOWL - AQUA OPAL. (A SUPER RARE ITEM; HAS 3 TIPS BROWNED & VERY PASTEL)
- 950 152. 8 1/2" - 9" N PEACOCKS RUFFLED BOWL - AQUA OPAL. (SUPER COLOR & OPAL. AND VERY NICE IRID.)
- 1150 153. 8 1/2 - 9" N ROSE SHOW RUFFLED BOWL - AQUA OPAL. (RARE; HAS GOOD OPAL. AND VERY NICE IRID.)
- 1000 154. 8 1/2 - 9" N THREE FRUITS STIPPLED RUFFLED COLLAR BASE BOWL - AQUA OPAL. (VERY NICE AND DESIRABLE, NICE BUTTERSCOTCH OVERLAY)
- 1600 155. 8 1/2 - 9" N GOOD LUCK RUFFLED BOWL - AQUA OPAL. (RARE; OPAL NEAR TIPS SUPER IRID; NICE)
- 600 156. N FINE CUT AND ROSE FTD. CANDY DISH WITH FANCY INTERIOR - AQUA OPAL. (SUPER PERFECT ITEM WITH VERY NICE BUTTERSCOTCH COLOR)
- 400 157. 9" DUGAN DOUBLE STEM ROSE DOMED FTD. RUFFLED BOWL - AQUA (A VERY RARE AND UNUSUAL COLOR; NICE)
- 65 158. 9" Dugan Double Stem Rose domed ftd. Ruffled Bowl - Lt. P. Opal. (scarce)
- 450 159. 5 3/4" FENTON PANTHER IND. FTD. RUFFLED SAUCE - AQUA (A VERY RARE AND UNUSUAL COLOR)
- 250 160. 5 3/4" FENTON PANTHER IND. FTD. WHIMSEY RUFFLED SAUCE - BLUE (VERY UNUSUAL - THE FEET DO NOT TOUCH; THE SAUCE SITS ON THE COLLAR BASE)
- 220 161. 11" Fenton Two Flowers ball ftd. Ruffled Bowl - Blue (very nice item)
- 75 162. 9 3/4" Fenton Vintage Grape Ice Cream Shaped Bowl - Blue
- 65 163. 9" Fenton Captive Rose Ruffled Bowl - Green
- 105 164. 9" Fenton Leaf Chain Ruffled Bowl - Blue (has very nice color & irid.)
- 500 165. FENTON STRAWBERRY TWO HANDLED BON BON - LIME GREEN OPAL. (SUPER COLOR AND SUPER ITEM - GOOD OPAL.)
- 100 166. FENTON STRAWBERRY TWO HANDLED BON BON - VAS./MARI. (VERY SCARCE COLOR AND NICE)
- 25 167. FENTON STRAWBERRY TWO HANDLED BON BON - LT. AMBER (VERY SCARCE COLOR)
- 295 168. FENTON STRAWBERRY TWO HANDLED BON BON - BLUE (RARE VARIANT WITH STRAWBERRY ON COLLAR BASE - FIRST WE'VE EVER SOLD)
- 300 169. 10 1/2" Fenton Fantail Interior, Butterfly and Berry Exterior Flared out Ruffled Master Berry Bowl - Blue (very scarce shape)
- 170 170. 8 3/4" FENTON AUTUMN ACORN EIGHT RUFFLED BOWL - VAS./MARI. (SUPER SCARCE AND HAS SUPER COLOR)
- 325 *Ac Fruit & Flower Bonbon dings*

- 185 171. 8 3/4" FENTON THISTLE EIGHT RUFFLED BOWL - VAS./MARI. (SUPER SCARCE COLOR AND VERY DESIRABLE)
- 75 172. 7 1/4" Dugan Holly Whirl Ruffled Bowl - P. Opal.
- 45 173. 5 1/2" Dugan Petal and Fan Ruffled Sauce with Jeweled Heart Exterior - P. Opal.
- 145 174. 6 1/2" Dugan Pods and Posies Plate with Basketweave Exterior - P. Opal. (very scarce with good opal.)
- 250 175. 8 3/4" DUGAN SOUTACHE DOMED FTD. FLARED PLATE - P. OPAL. (VERY RARE SHAPE AND UNUSUAL; NICE)
- 200 176. 9 1/4" DUGAN BORDER PLANTS DOMED FTD. HANDGRIP PLATE - DK. P. OPAL. (A VERY NICE EXAMPLE OF A SCARCE ITEM)
- 150 177. 8 1/2" Dugan Round Up Deep Flared Bowl or Plate - P. Opal. (scarce)
- 55 178. 7 1/4" Dugan Single Flower Framed Ruffled Tri cornered Bowl - P. Opal.
- 65 179. 6" Dugan Wishbone and Spades Ruffled Sauce - P. Opal. (very scarce)
- 45 180. 6 3/4" WESTMORELAND FILE AND FAN STEMMED COMPOTE - P. OPAL. (SCARCE WITH VERY GOOD OPAL.)
- 150 181. 7 3/4" Westmoreland Pillow and Sunburst Six Ruffled Bowl - P. Opal. (scarce with super opal.)
- 45 182. 9 1/4" Dugan Stippled Petals domed ftd. Ruffled Bowl - P. Opal.
- 80 183. 8 1/4" Dugan Raindrops domed ftd. Bowl - P. Opal.
184. 9 1/2" Fenton Stippled Rays Lg. Ruffled Bowl with Scale Band exterior - White (scarce)
- 325 185. 8 1/2" FENTON LOTUS AND GRAPE ICE CREAM SHAPED BOWL - PERSIAN BLUE/ MARI. (VERY RARE ITEM AND VERY SCARCE)
- 485 186. DAISY CUT BELL - DK. MARI. (VERY RARE; GOOD DARK COLOR, NICE)
- 425 187. N DIAMOND POINT BASKET - MARI. (VERY, VERY RARE AND DESIRABLE)
- 400 188. MARY ANN 3 HANDLED LOVING CUP - DK. MARI. (SUPER RARE AND DESIRABLE)
- 600 189. CAMBRIDGE INVERTED STRAWBERRY LADIES SPITTOON - DK. MARI. (VERY RARE ITEM WITH GOOD COLOR AND IRID.)
- 450 190. FENTON ZIG ZAG ENAMELED DECORATED SHASTA DAISY BULBOUS WATER PITCHER - ICE GREEN (VERY DESIRABLE; GOOD DECOR. AND COLOR)
- 350 191. 9 1/4" FENTON THREE ROW OPEN EDGE ICE CREAM SHAPED BOWL - ICE GREEN (VERY RARE AND DESIRABLE; REALLY STRETCHED OUT)
- 475 192. 6 3/4 - 8 1/2" FENTON THREE ROW OPEN EDGE BANANA SHAPED BOWL - ICE GREEN (VERY RARE AND AN UNUSUAL SHAPE)
- 20 193. Fenton Wreath of Roses Punch Cup with Persian Medallion interior and Stenciled Advertising - Mari. (advert.- *Souvenir of So. Brookville, Me.*)
- 100 194. IMP. FIELDFLOWER TUMBLER - VIOLET BLUE (VERY RARE COLOR; SILVERY IRID.)
- 160 195. IMP. FIELDFLOWER TUMBLER - BLUE (A BLUER TINT)
- 45 196. Fenton Butterfly and Fern Tumbler - Amy. (factory ground base)
- 35 197. Fenton Enameled Forget Me Not Tumbler - Green
- 20 198. Concave Diamond Tumbler - Celeste Blue
- 35 199. Dugan Rambler Rose Tumbler - Amy. (scarce color)
- 250 200. M'BURG MULTI-FRUIT AND FLOWERS 8 PC. PUNCH SET - DK. MARI. (A SUPER SET WITH GOOD CONSISTENT COLOR)
- 200 201. M'burg Diamond Water Pitcher - Amy. (nice example)
- 40 202. 7 3/4 - 8 1/2" M'burg Grape Wreath Deep Bowl - Green (nice radium finish)
- 45 203. 8 1/2" M'burg Grape Wreath Bowl with a 3 in 1 Edge - Mari. (good radium finish)
- 230 204. 10" M'burg Fleur de Leis Collar Base Bowl with a 3 in 1 Edge - Green (satiny irid.)
- 1300 205. 6 1/4 X 6 3/4" M'BURG BIG FISH SQUARE BOWL - MARI. (SUPER RARE ITEM WITH GOOD SATINY COLOR)
- 575 206. 8 1/4" M'BURG BIG FISH BOWL WITH 3 IN 1 EDGE - AMY. (SUPER SATINY COLOR AND RARE)
- 950 207. 6 1/2 X 6 1/2" M'BURG TROUT AND FLY SQUARE BOWL - AMY. (SUPER SATINY IRID. ON A RARE ITEM)
- 525 208. 8 1/2" M'BURG TROUT AND FLY ICE CREAM SHAPED BOWL GREEN (SUPER SATINY FINISH, RARE)
- 600 209. 8 3/4" M'BURG TROUT AND FLY 6 RUFFLED BOWL - GREEN (HAS RADIUM FINISH WITH GOOD DETAIL)
- 425 210. 8 3/4" M'BURG TROUT AND FLY BOWL WITH A 3 IN 1 EDGE - MARI. (GOOD SATINY COLOR)
- 325 211. 8 1/2" M'BURG ZIG ZAG SQUARE TIGHT CRIMPED EDGE BOWL - MARI. (GOOD RADIUM FINISH IN A RARE SHAPE)
- 400 212. 9 1/2" M'BURG MANY STARS SIX RUFFLED BOWL - AMY. (SUPER RADIUM FINISH IN A SCARCE ITEM)
- 60 214. 10 1/4" M'burg Rosalind Bowl with a 3 in 1 Edge - Mari. (satiny finish)
- 130 213. 10" M'burg Rosiland Six Ruffled Bowl - Amy. (radium finish and nice)
- 500 215. M'BURG POPPY COMPOTE (POTPOURRI EXTERIOR) - MARI. (SUPER RADIUM FINISH AND VERY RARE)
- 600 216. M'BURG LEAF AND LITTLE FLOWERS MINIATURE COMPOTE - AMY. (RADIUM; RUFFLED TOP, SUPER NICE)
- 325 217. M'BURG LEAF AND LITTLE FLOWERS MINIATURE COMPOTE - MARI. (RADIUM - STRAIGHT TOP - SUPER NICE)
- 400 218. M'BURG SEACOAST PIN TRAY - GREEN (RARE & PERFECT; NICE EXAMPLE)
- 425 *Hammond Red Chandler*

- 400 219. M'BURG SEACOAST PIN TRAY - MARI. (VERY RARE & DESIRABLE)
- 450 220. M'BURG SWIRL HOBNAIL SPITTOON - DK. MARI (A SUPER EXAMPLE - THE BEST I'VE SEEN)
- 625 221. M'BURG SWIRL HOBNAIL SPITTOON - PUR. (SCARCE SHAPE & VERY DESIRABLE)
- 290 222. M'BURG HOBNAIL ROSE BOWL - MARI (SCARCE & VERY DESIRABLE)
223. 8 1/2" M'burg Grape Wreath Bowl with a 3 in 1 Edge - Mari. (radium finish)
- 45 224. 8 1/2" M'burg Grape Wreath Ruffled Bowl - Green
- 550 225. 9 1/4" - 9 1/2" M'BURG VINTAGE/HOBNAIL EXTERIOR ICE CREAM SHAPED BOWL - GREEN (SUPER RARE ITEM WITH GOOD SATINY COLOR)
- 900 226. 9 3/4" M'BURG VINTAGE GRAPE HOBNAIL EXTERIOR BOWL WITH A 3 IN 1 EDGE - MARI. (SUPER SATINY AND SUPER RARE)
- 150 227. 7 3/4" M'burg Little Stars Six Ruffled Bowl - Amy. (good satiny finish)
228. 7 1/4" M'burg Strawberry Wreath Six Ruffled Bowl - Mari. (good radium finish)
- 220 229. 6" M'BURG STRAWBERRY WREATH TIGHT CRIMPED EDGE RUFFLED SAUCE - AMY. (VERY RARE WITH GOOD RADIUM FINISH)
- 95 230. 6 1/2" M'burg Strawberry Wreath Short Stemmed Ruffled Compote - Mari. (good radium finish) *souvenir*
- 100 231. 8 3/4" M'burg Holly Sprig Ice Cream Shaped Bowl - Amy. (radium finish)
- 70 232. 9 1/2" M'burg Holly Sprig Ruffled Bowl - Amy. (radium finish)
- 90 233. M'burg Holly Sprig One Handled Nappy - Amy. (radium - nice)
- 45 234. M'burg Holly Sprig One Handled Nappy - Mari. (radium - nice)
- 40 235. M'burg Holly Sprig Two Handled Nappy with 2 sides up - Mari. (satiny finish)
- 125 236. 8 3/4" - 9" Fenton Concord Grape Ruffled Bowl - Amy. (very scarce)
- 160 237. 8 3/4" Fenton Concord Grape Ruffled Bowl - Green (very scarce)
- 85 238. 9" Fenton Coral Ruffled Bowl - Green (very scarce pattern - nice)
- 1000 239. MID SIZE IMP. ZIPPER LOOP KEROSENE LAMP - DK. MARI. (VERY SCARCE & VERY DESIRABLE) *finger lamp*
- 900 240. 6" GERVITZ BROS. FURNITURE AND CLOTHING - UNION AVE. & EAST BURNSIDE ST. ADVERTISING PLATE - AMY. (SUPER COLOR ON A VERY SUPER RARE ITEM)
- 270 241. 6" SEASONS GREETINGS - EAT PARADISE SODA ADVERTISING PLATE - AMY. (VERY SCARCE)
- 345 242. 9" COMPLIMENTS SPECTORS DEPARTMENT STORE ADVERTISING PLATE WITH HEART AND VINE - MARI. (SCARCE AND VERY DESIRABLE)
- 250 243. BROOKLYN BRIDGE TEN RUFFLED BOWL - MARI. (VERY SCARCE & DESIRABLE)
- 135 244. 8 1/4" Souvenir Hot Springs, Ark. Vase - Lt. Mari. (scarce)
- 1250 245. 10" IMPERIAL NUART CHRYSANTHEMUM CHOP PLATE - AMBER (SUPER PIECE AND SIGNED - VERY RARE)
- 250 246. 10 1/2" IMPERIAL NUART HOMESTEAD CHOP PLATE - WHITE (A SUPER EXAMPLE, NOT SIGNED)
- 160 247. 7 1/2" U.S. GLASS PALM BEACH SQUARE PLATE WITH GOLD DECORATION - MARI. (VERY SCARCE)
- 245 248. 3 1/2" - 3 3/4" TALL PALM BEACH SQUATTY ROUNDED TOP VASE - MARI. W/GOOFUS (VERY SCARCE)
- 45 249. 9" Fenton Captive Rose Plate - Blue (silvery irid.)
- 900 250. 8 1/2" FENTON SOLDIERS AND SAILORS PLATE - MARI. (SUPER, SUPER IRID. AND PERFECT)
- 425 251. 7 1/2" FENTON PINE CONE PLATE - AMY. (THE BEST EXAMPLE OF THIS PATTERN I'VE SEEN)
- 400 252. FENTON TWO FLOWERS SPATULA FTD. PLATE - MARI. (A VERY RARE AND DESIRABLE ITEM) *108, 190*
253. 8 3/4" Fenton Ribbon Tie Low Ruffled Bowl with a 3 in 1 Edge - Amy.
254. 9 1/2" FIELD THISTLE FLAT PLATE - LT. MARI. (SUPER TOUGH ITEM TO FIND)
255. Dugan Petal and Fan / Jeweled Heart exterior Large Ruffled Bowl - White (scarce)
256. 10" Cosmos and Cone Large Ruffled Bowl - White
257. 8 1/2" Fenton Butterfly and Berry Large Master Berry Bowl - Blue
258. 9" Imperial Hattie Eight Ruffled Bowl - Pur. (absolutely super color and quality)
259. 8 3/4" Imperial Hattie Deep Round Flared Bowl - Smoke (very scarce color & nice)
260. IMPERIAL POINSETTIA MILK PITCHER - SMOKE (VERY RARE AND DESIRABLE COLOR)
261. Imperial Poinsettia Milk Pitcher - Dk. Mari. (super color)
262. Imperial Star Medallion Milk Pitcher - Smoke (very scarce color and nice)
263. Imperial Grape Handled Flower Basket - Mari.
264. Imperial Daisy Handled Flower Basket - Mari.
265. Imperial Grape Decanter Stopper only - Green (tough to find if you need it)

