



## AUCTION SERVICE Carnival Glass Auction

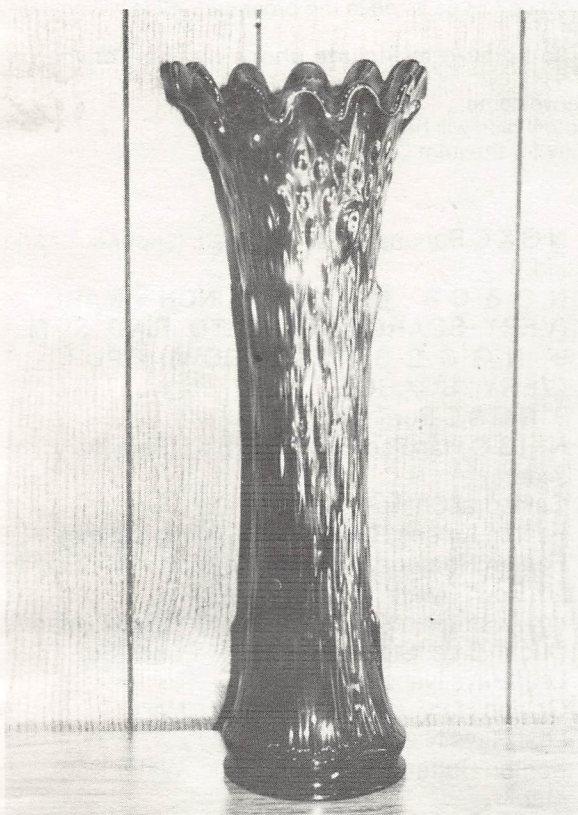
Saturday, October 10, 1987

(preview 5 - 9 pm Friday night  
and 8 am Saturday morning,  
Auction 9 am Saturday morning)

at the

**Holiday Inn -  
Cleveland / Hudson**

**Rt. 8 at Ohio Turnpike Exit 12  
240 Hines Hill Rd.  
Hudson, Ohio 44236**



LOT #50

We are pleased to sell over 250 pieces of old Carnival glass from the collection of Helen Bell of Rocklin, California. She has been and will continue to be an active collector in the Northern California area. For reasons of convenience she has decided to part with some of her glass, containing a number of fine items and some rarities in her specialty - vases. Hope to see you there as I'm sure there's something for everyone.

The Cleveland / Hudson Holiday Inn will host the event. The motel is located just off Exit 12 of the Ohio Turnpike (Rt. 8). The motel comes complete with an indoor pool plus all the eating and lounge facilities we all like. The motel rate of \$44.95 single or double will be in effect. For those who wish to attend, you may call the Holiday Inn direct at 216-653-9191 and **mention the auction**. Also, for those who wish to fly into the Cleveland/Hopkins Int'l Airport, there is a shuttle available at a cost - inquire at the motel.

**SPECIAL NOTICE:** If your brochure arrives late, you may call in your bids to Tom by Thursday, Oct. 8th, 12:00 pm.

### Burns Auction Service

Tom Burns  
109 East Steuben Street  
Bath, New York 14810  
(607) 776-7942

Bill Richards  
44 Water Street  
Poland, Ohio 44514  
(216) 757-2001

Licensed and Bonded by the Department of Commerce in favor of the State of Ohio



Mail Bids honored under the following conditions:

1. No deposit required. Bidders will take full responsibility to honor any and all bids we execute for them. Payment in full plus postage and handling required after notification and before we ship any item to them.
2. Items are bid on in perfect condition with average or above average iridescence OR as listed in the brochures. Bids will not be carried out when damage on an item has been found during the auction.
3. Successful bidders will be notified by collect call from the auctioneer (so be sure to include phone number) or you may call on your own accord.
4. Phone inquires about the glass or any other questions about the glass are welcome.
5. All non-successful bids will receive a result summary in the mail. Results of all bids will be provided.
6. If you have some other person at the auction bidding for you, they must pay for the item before taking it.
7. Mail bids due by Noon, October 8th, 1987.

<u>12.50</u>	1.	Imp. Grape Wine Glass - Mari.	<u>125</u>	31.	N G & C Banana Boat - Dk. Mari. (super color and irid.)
<u>27.50</u>	2.	Imp. Grape Wine Glass - Green	<u>200</u>	32.	<b>N G &amp; C 8 . MID SIZE PUNCH - MARI. (VERY SCARCE, HARD TO FIND SET)</b>
<u>35</u>	3.	Imp. Grape Decanter and Stopper - Mari.	<u>120</u>	33.	<b>9" N G &amp; C STIPPLED BOWL - PUR. (VERY SCARCE)</b>
<u>40</u>	4.	Imp. Grape 7 pc. Wine Set with 6 new Wines - Mari.	<u>30</u>	34.	9" N G & C Bowl - Pur.
<u>25</u>	5.	Imp. Fashion Breakfast Sugar and Creamer - Mari. (very scarce)	<u>40</u>	35.	N G & C Handled Bon Bon - Elec. Blue (very scarce)
<u>25</u>	6.	Fenton Open Edge Basketweave Hat - Mari.	<u>55</u>	36.	Cathedral Chalice - Mari.
<u>275</u>	7.	<b>FENTON OPEN EDGE BASKETWEAVE HAT - RED (SCARCE AND DESIRABLE)</b>	<u>85</u>	37.	Fenton Kittens Ruffled Bowl - Mari. (scarce)
<u>110</u>	8.	<b>7" FENTON VINTAGE GRAPE PLATE - BLUE (VERY SCARCE)</b>	<u>65</u>	38.	Fenton Horsehead Medallion Jack in the Pulpit ftd. Bowl - Mari.
<u>27.50</u>	9.	10" Fenton Peacock Tail Ruffled Bowl - Green	<u>45</u>	39.	Lg. Australian Kookaburra Ruffled Bowl - Mari.
<u>25</u>	10.	<b>N THREE FRUITS PLATE - CRYSTAL (NOT CARNIVAL BUT VERY SCARCE)</b>	<u>150</u>	40.	Dugan 8 pc. Stork and Rushes Punch Set - Mari.
<u>225</u>	11.	<b>N BUSHEL BASKET - VAS. (NOT CARNIVAL BUT VERY RARE AND UNUSUAL)</b>	<u>30</u>	41.	Leaf Rays Nappy - P. Opal.
<u>125</u>	12.	<b>FENTON VINTAGE GRAPE 3 FTD. FERNERY - CHOCOLATE GLASS (VERY SCARCE FENTON COLOR; NOT CARNIVAL)</b>	<u>50</u>	42.	Golden Harvest 7 pc. Wine Set - Mari.
<u>125</u>	13.	Fenton Concord Ruffled Bowl - Green (very scarce)	<u>35</u>	43.	Leaf Rays Nappy - White
<u>150</u>	14.	Fenton Concord Ruffled Bowl - Blue (very scarce)	<u>255</u>	44.	Fenton Butterfly and Berry 7 pc. Water Set - Mari.
<u>75</u>	15.	Fenton Concord Ruffled Bowl - Mari. (scarce)	<u>200</u>	45.	Fenton Butterfly and Berry 4 pc. Table Set - Mari.
<u>200</u>	16.	<b>UNUSUAL CONCORD GRAPE PLATE ON BRASS PEDESTAL - MARI. (FACTORY MOUNTED PLATE, DRILLED AND MOUNTED ON BRASS PEDESTAL; VERY ODD)</b>	<u>245</u>	46.	<b>N LEAF AND BEADS FTD. ROSE BOWL - AQUA OPAL. (RARE AND DESIRABLE)</b>
<u>40</u>	17.	Dugan Pony Ruffled Bowl - Mari.	<u>60</u>	47.	N Leaf and Beads ftd. Rose Bowl - Amy.
<u>50</u>	18.	Imp. Fashion Water Pitcher - Mari.	<u>45</u>	48.	N Leaf and Beads ftd. Rose Bowl with Floral Int. - Mari.
<u>12.50</u>	19.	Imp. Grape Saucer only - Clam. (scarce)	<u>10</u>	49.	10 1/2" N Tree Trunk Vase - Mari. to Clear
<u>100</u>	20.	Imp. Grape 7 pc. Water Set - Mari. (good dark set; one tumbler damaged)	<u>500</u>	50.	<b>N TREE TRUNK FUNERAL VASE - AMY. (RARE AND VERY DESIRABLE; NICE)</b>
<u>NS</u>	21.	Fenton G & C Bowl - Mari.	<u>545</u>	51.	<b>N TREE TRUNK MID-SIZE FUNERAL VASE - CUSTARD WITH NUTMEG (EXTREMELY RARE; ONLY ONE I'VE EVER SEEN)</b>
<u>50</u>	22.	6" N G & C Plate - Pur.	<u>325</u>	52.	<b>N TREE TRUNK STANDARD SIZE VASE - AQUA OPAL.</b>
<u>350</u>	23.	<b>N G &amp; C WATER PITCHER - GREEN (VERY SCARCE)</b>	<u>25</u>	53.	8 1/2" N Tree Trunk Vase - Mari.
<u>80</u>	24.	N G & C Covered Cracker Jar - Mari. (scarce)	<u>10</u>	54.	N Tree Trunk Vase - Clear Opal. (not Carnival)
<u>900</u>	25.	<b>N G &amp; C MASTER PUNCH BOWL AND BASE - MARI. (SUPER)</b>	<u>NS</u>	55.	<b>N RIBBED TORNADO VASE - PUR. (VERY DESIRABLE AND UNUSUAL)</b>
<u>675</u>	26.	<b>N G &amp; C STIPPLED PUNCH BOWL AND BASE - ELEC. BLUE</b>	<u>250</u>	56.	<b>N SMALL SIZE TORNADO VASE - GREEN</b>
<u>325</u>	27.	N G & C 7 pc. Water Set - Pur.		57.	<b>11" FINE RIB VASE - ICE GREEN (RARE)</b>
<u>85</u>	28.	N G & C 7 pc. Berry Set - Mari.	<u>30</u>	58.	11" Fine Rib Vase - Green
<u>425</u>	29.	<b>5 1/2" N G &amp; C IND. ICE CREAM SAUCE - ICE GREEN</b>	<u>55</u>	59.	10" Fenton Rustic Vase - Amy.
<u>750</u>	30.	<b>N G &amp; C BANANA BOAT - ICE GREEN (VERY SCARCE AND VERY DESIRABLE)</b>	<u>400</u>	60.	<b>20 1/2" FENTON RUSTIC FUNERAL VASE - MARI. (VERY SCARCE AND DESIRABLE; GOOD SIZE)</b>
			<u>200</u>	61.	<b>18" FENTON RUSTIC FUNERAL VASE - MARI. (VERY SCARCE AND DESIRABLE)</b>
			<u>65</u>	62.	10" Fenton Rustic Mid Size Funeral Vase - Green



- 345 139. FANCIFUL RUFFLED PLATE - AMY. (SCARCE)  
50 140. Fanciful Ruffled Plate - Mari.  
50 141. DUGAN HEAVY IRIS TANKARD WATER PITCHER - MARI. (VERY SCARCE BUT HAS SMALL BURST BUBBLE)  
125 142. FENTON PANELLED DANDELION TANKARD PITCHER - DK. MARI. (VERY SCARCE)  
55 143. Westmoreland Leaf Swirl Stemmed Compote - Amy.  
55 144. N Fern / Daisy and Plume ext. Compote - Green (scarce)  
42.50 145. DUGAN CONSTELLATION STEMMED COMPOTE - MARI. (VERY SCARCE PATTERN IN A RARE COLOR)  
325 146. N DAISY AND DRAPE FTD. VASE - AQUA OPAL. (VERY RARE WITH GOOD COLOR)  
75 147. 10 1/2" N FOUR COLUMN PILLAR VASE - AQUA OPAL. (VERY DESIRABLE)  
60 148. Round Up Bowl with Candy Ribbon Edge - Mari.  
225 149. ROUND UP PLATE - BLUE (VERY SCARCE)  
100 150. ROUND UP PLATE - AMY.  
250 151. N STRAWBERRY STIPPLED RUFFLED BOWL - MINT GREEN (A VERY RARE AND DESIRABLE ITEM; ODD ICE GREEN BASE COLOR)  
1200 152. N PEACOCK AT THE FOUNTAIN STEMMED COMPOTE - ICE GREEN (EXTREMELY RARE AND DESIRABLE; PERFECT, WITH GOOD COLOR)  
25 153. N Star of David and Bows Ruffled Bowl - Mari.  
70 154. 9 1/2" Four Flowers Lg. Ruffled Bowl - Dk. Pur. (scarce)  
275 155. N Raspberry 7 pc. Water Set - Dk. Mari. (very scarce set)  
60 156. N Good Luck Bowl with Pie Crust Edge - Dk. Mari.  
65 157. N Good Luck Ruffled Bowl with Basketweave ext. - Pastel Mari. (good irid.)  
40 158. Dugan Cherry Wreath ind. Sauce in Silver Holder with spoon - Mari.  
10 159. Stippled Petals domed ftd. Ruffled Bowl - P. Opal.  
17.50 160. Floral and Wheat / Puzzle Handled Bon Bon - White (scarce)  
200 161. DUGAN WREATHED CHERRY WATER PITCHER - PUR. (VERY RARE ITEM WITH GOOD COLOR)  
160 162. N SUNFLOWER FTD. RUFFLED BOWL - BLUE (VERY RARE COLOR)  
45 163. N Sunflower ftd. Ruffled Bowl - Green  
10 164. N Sunflower ftd. Ruffled Bowl - Mari.  
20 165. N Sunflower ftd. Ruffled Bowl - Mari. (bruise on foot)  
180 166. N Grape and Gothic Arch 7 pc. Water Set - Mari. (scarce set)  
55 167. Fenton Orange Tree ftd. Fruit Bowl - Mari.  
60 168. Fenton Orange Tree ftd. Hatpin Holder - Mari. (very scarce)  
35 169. Fenton Flowers ftd. Rose Bowl - Mari.
- 25 170. Fenton Blackberry Bramble Compote - Amy.  
270 171. FENTON BLACKBERRY SPRAY RUFFLED HAT - RED (VERY SCARCE)  
60 172. Fenton Blackberry Spray Ruffled Hat - Mari./Vas. (scarce)  
35 173. 8 1/2" Fenton Ribbon Tie Bowl - Mari.  
50 174. 8 1/2" Fenton Thistle Bowl - Amy.  
120 175. 8 1/2" Fenton Thistle Bowl with Horlacher Advert. - Green (scarce)  
475 176. 9 1/2" FENTON DRAGON AND STRAWBERRY RUFFLED, COLLAR BASED BOWL - BLUE (VERY RARE AND DESIRABLE)  
200 177. 8 1/2" WESTMORELAND COIN DOT RUFFLED BOWL - BLUE OPAL. (VERY SCARCE)  
25 178. 8 1/2" Westmoreland Coin Dot Plate - Amy.  
160 179. 8 1/2" Westmoreland Coin Dot Plate - Mari.  
15 180. Fenton Vintage Grape ftd. Fernery - Blue  
70 181. LG. SIZE BUDDHA FIGURAL - GREEN (AGE-?, SIGNED JAPAN; VERY UNUSUAL)  
175 182. 8 1/2-9" WESTMORELAND CAROLINA DOGWOOD RUFFLED BOWL - BLUE OPAL. (VERY SCARCE)  
30 183. 8 1/2-9" Westmoreland Carolina Dogwood Ruffled Bowl - P. Opal. (scarce)  
100 184. 6 1/2" WISHBONE AND SPADES PLATE - AMY. (VERY NICE)  
15 185. 6" Westmoreland Scales Plate - Amy.  
70 186. 8 1/2" WESTMORELAND SCALES RUFFLED BOWL - BLUE OPAL. (VERY SCARCE)  
20 187. 8 1/2" WESTMORELAND SCALES RUFFLED BOWL - P. OPAL. (VERY SCARCE)  
188. 8 1/2" WESTMORELAND SCALES RUFFLED BOWL - MARI./MILK GLASS (VERY SCARCE)  
42.50 189. Cambridge Inverted Feather Compote - Mari.  
50 190. Cambridge Inverted Strawberry Ind. Creamer - Amy. (very scarce; base has some roughness)  
925 191. M'BURG MULTI-FRUITS AND FLOWERS 8 PC. PUNCH SET - AMY. (VERY RARE AND DESIRABLE)  
70 192. 9 1/2" M'burg Primrose Lg. Ruffled Bowl - Green  
65 193. 9 1/2" M'burg Primrose Lg. Ruffled Bowl - Mari.  
27.50 194. 5" M'burg Blackberry Wreath Tight Ruffled Edge Sauce - Green  
27.50 195. M'burg Holly Sprig 2 Handled Bon Bon - Green  
350 196. LG. ZIPPER LOOP KEROSENE LAMP - MARI. (VERY DESIRABLE; GETTING TOUGH TO FIND)  
30 197. 9" Imp. Open Rose Plate - Mari.  
27.50 198. 8 1/2" Imp. Open Rose Ruffled Bowl - Amber.  
1550 199. IMP. FLORAL AND SCROLL LG. VASE - PUR. (RARE AND EXTREMELY DESIRABLE; SUPER)  
25 200. 10 1/2" Fenton Diamond Rib Vase - Amy.  
500 201. 19" FENTON DIAMOND RIB FUNERAL VASE - AMY. (EXTREMELY RARE AND VERY DESIRABLE; NICE)  
25 202. 11 1/2" Fenton Diamond Rib Vase - Green  
20 203. 10" Fenton Diamond Rib Vase - Mari.  
25 204. 15 1/2" Fenton Fine Rib Vase - Blue  
15 205. 17 1/2" Fenton Fine Rib Vase - Pastel Mari.



- 40 63. 11" Fenton Rustic Mid Size Funeral Vase - Mari. 325 100. N HEART AND FLOWERS RUFFLED  
45 64. Fenton April Showers Stubby Vase - Blue BOWL - ICE BLUE (VERY RARE AND  
450 65. IMP. LOGANBERRY VASE - PUR. DESIRABLE)  
 (ETCHED 'CARMEN MORALES - 1913', 140 101. N Strawberry Stippled Ruffled Bowl - Mari.  
 A BEAUT) (scarce variation)  
350 66. IMP. POPPY SHOW - MARI. (VERY 110 102. N Three Fruits Stippled Ruffled ftd. Bowl - Aqua  
 SCARCE) Opal. (scarce; damaged on foot)  
10 67. Imp. Ripple Vase - Mari. 25 103. N Good Luck Ruffled Bowl - Mari.  
30 68. 19" Imp. Ripple Vase - Green 200 104. N Good Luck Bowl with Pie Crust Edge - Mari.  
135 69. IMP. RIPPLE VASE AQUA/TEAL (scarce)  
 (VERY SCARCE COLOR) 155 105. 8 1/2" N FRUITS AND FLOWERS PLATE  
150 70. IMP. THUMBPRINT AND OVALS VASE - MARI. (RARE AND DESIRABLE)  
 - MARI. (VERY RARE AND DESIRA- 106. 6 1/2" Westmoreland Scales Plate - Amber.  
 BLE) (scarce color)  
NS 71. Diamond and Sunburst 7 pc. Wine Set - Mari. 25 107. 6 1/2" Westmoreland Scales Plate - Teal (scarce  
45 72. 8 1/2" Imp. Ripple Stubby Vase - Pur. color)  
22.50 73. 7 1/2" Imp. Ripple Stubby Vase - Green 90 108. DUGAN SOUTACHE DOMED FTD. RUF-  
NS 74. Imp. Morning Glory Ribbed Vase - Mari. FLED BOWL - P. OPAL. (VERY SCARCE  
91.5 75. LG. BULBOUS PALM BEACH VASE - PATTERN AND COLOR)  
 PEARLIZED MILK GLASS (VERY RARE 109. 8" Columbus Sailing Ship Plate - Mari.  
 COLOR AND A VERY DESIRABLE 110. 9" Fenton Leaf Chain Plate - Green  
 ITEM. 55 111. 9" Imp. Embossed Scroll Plate - Green  
10 76. PALM BEACH SWUNG WHIMSEY VASE 112. Interior Swirl Pinched in Whimsey Shape Rose  
 - MARI. Bowl - P. Opal. (very scarce)  
300 77. PALM BEACH SWUNG CUSPIDOR 113. Interior Swirl Pinched in Tri-Cornered Bowl - P.  
 SHAPED VASE - LT. AMY. WITH SIL- Opal. (scarce)  
 VER DECORATION (VERY SCARCE 114. Dogwood Sprays domed ftd. Ruffled Bowl - P.  
 SHAPE AND COLOR) Opal. (rim chip on foot)  
15 78. Palm Beach Ind. Berry Bowl - Mari. 45 115. Dugan Lg. Size Ski Star Ruffled Bowl - P. Opal.  
65 79. 8 1/2" Cosmos and Cane Ruffled Bowl - White 50 116. Single Flowers ext. Patterned Bowl - P. Opal.  
15 80. Windflower Handled Nappy - Mari. 250 117. 6 1/2" Wishbone and Spades Ruffled Sauce - P.  
20 81. Pair Estate Candleholders - Mari. (very scarce Opal.  
 set) 25 118. Dugan Holly Whirl Gravy Sauce - P. Opal.  
10 82. Imp. Pansy Breakfast Sugar and Creamer - Mari. 25 119. Dugan Caroline Handgrip Bowl - P. Opal.  
15 83. Imp. Flute Toothpick Holder - Green 175 120. DUGAN NAUTILUS - SIGNED IN SCRIPT  
20 84. Imp. Flute Toothpick Holder - Mari. - P. OPAL. (VERY RARE WHEN SIGNED  
500 85. FENTON BLACKBERRY SPRAY RUF- VERY DESIRABLE)  
 FLED HAT - REVERSE AMBERINA 121. N Flute 4 pc. Table Set - Mari. (scarce set)  
 OPAL. (VERY, VERY RARE COLOR) 65 122. N Panelled Holly Handled Candy Dish - Green  
100 86. N Wishbone ftd. Ruffled Bowl - Green 35 123. 5 1/2" N Strawberry Ruffled Sauce - Amy.  
35 87. N Wishbone ftd. Ruffled Bowl - Pastel Mari. 25 124. N Double Loop Chalice - Aqua (rare but has small  
40 88. N Wishbone ftd. Ruffled Bowl - Mari. rim chip)  
35 89. N Grape Leaves Ruffled Bowl - Mari. 15 125. N SINGING BIRD MUG WITH HOTEL  
300 90. N BEADED CABLE FTD. ROSE BOWL - REDINGTON, WILKES BARRE, PA. AD-  
 AQUA OPAL. (VERY SCARCE AND DE- VERT. - PUR. (SCARCE)  
 SIRABLE) 45 126. Bo Peep Mug - Lt. Mari. (scarce)  
50 91. Fenton Two Flowers Spatula ftd. Rose Bowl - 20 127. Standard Size Orange Tree Mug - Mari.  
 Dk. Mari. (very scarce) 128. N DANDELION MUG - PUR. (SCARCE  
20 92. Imp. Star and File Rose Bowl - Mari. WITH GOOD COLOR)  
40 93. Fenton Mikado Lg. Ruffled Compote - Mari. 45 129. Beaded Shell Mug - Amy.  
 (very scarce) 35 130. Imp. Grape Punch Cup - Pur. (scarce)  
175 94. Fenton Apple Tree 7pc. Water Set - Mari. 145 131. IMP. FASHION TUMBLER - SMOKE  
 (scarce set) (SCARCE COLOR)  
275 95. N BLOSSOM TIME STEMMED COM- 45 132. N Dandelion Tumbler - Mari.  
 POTE - GREEN (VERY RARE AND DE- 133. N DANDELION TANKARD WATER  
 SIRABLE) PITCHER - MARI. (VERY SCARCE AND  
50 96. Fenton Peacock at the Urn Compote - Mari./ DESIRABLE)  
 Blue (scarce) 10 134. Imp. Poinsetta Milk Pitcher - Mari.  
30 97. N Poppy Relish Dish - Mari. (very scarce) 15 135. Imp. Rococco Vase - Mari. (scarce)  
310 98. N HEART AND FLOWERS STEMMED 135 136. Fenton Floral and Grape Water Pitcher - Blue  
 COMPOTE - ELEC. BLUE (VERY DE- (scarce; good color)  
 SIRABLE PATTERN AND COLOR) 350 137. FANCIFUL RUFFLED PLATE - P. OPAL.  
90 99. N HEART AND FLOWERS STEMMED (VERY SCARCE; GOOD COLOR)  
 COMPOTE - PASTEL MARI. (SCARCE) 80 138. Fanciful Ruffled Plate - White



206. 13" Fenton Fine Rib Vase - Amber. (very scarce color)  
 207. (2) 11 1/2" N Thin Rib Vases - Olive Green (to be sold separately)  
 208. Pair 8 1/2" Stretch Candlesticks - Celeste Blue  
 209. 8 1/2-9" Fenton Peacock and Grape Collar Based Bowl - Pale Amy. (scarce; has lavender tint)  
 210. 8 1/2-9" Fenton Peacock and Grape Collar Based Bowl - Ruby Red (non-irridized but very scarce)  
 211. **8 1/2-9" FENTON PEACOCK AND GRAPE COLLAR BASED BOWL - RED (RARE AND VERY DESIRABLE; GOOD COLOR)**  
 212. **8 1/2" FENTON PEACOCK AND GRAPE SPATULA FTD. RUFFLED BOWL - LIME GREEN OPAL.(VERY DESIRABLE AND HARD TO FIND)**  
 213. 8 1/2-9" Fenton Dragon and Lotus Ruffled Bowl - Green (scarce color)  
 214. 8 1/2-9" Fenton Dragon and Lotus Ruffled Bowl - Amy. (scarce color)  
 215. 8 1/2-9" Fenton Dragon and Lotus Ruffled Bowl - Amber. (sliver off edge, scarce color)  
 216. 8 1/2" Fenton Dragon and Lotus Low Ruffled Bowl - Mari. (low shape, could almost be a plate)  
 217. 8 1/2" Fenton Holly Low Ruffled Bowl - Mari. (low shape, could almost be a plate)  
 218. 9" Fenton Holly Ruffled Bowl - Green (scarce)  
 219. 9" Fenton Holly Bowl with Candy Ribbon Edge - Lt. Amy.  
 220. 10 1/2" Fenton Plume Panels Vase - Mari.  
 221. **QUILTED DIAMONDS AND RIBS ROSE BOWL - PEARL ON MILK GLASS (VERY UNUSUAL AND DIFFERENT)**  
 222. Imp. Windmill 7 pc. Water Set - Mari.  
 223. 7 1/2" Imp. Open Rose ftd. Bowl - Clam.  
 224. 7 1/2" N Feather Stitch Vase - Green  
 400 225. **15" N THIN RIB MID SIZE FUNERAL VASE - SAPPHIRE BLUE (VERY RARE AND DESIRABLE COLOR)**  
 226. **N GRAPE ARBOR TANKARD WATER PITCHER - WHITE (RARE AND DESIRABLE ITEM)**  
 227. **7 1/2-8" FENTON ACORN RUFFLED BOWL - RED (RARE AND DESIRABLE)**  
 228. 7 1/2-8" Fenton Acorn Ruffled Bowl - Aqua/ Mari. (scarce)  
 229. 7 1/2-8" Fenton Acorn Ruffled Bowl - Mari.  
 230. Floral and Wheat / Puzzle Handled Bon Bon - P. Opal. (scarce)  
 231. **DUGAN PERSIAN GARDEN 2 PC. FRUIT BOWL AND BASE - WHITE (SCARCE AND VERY DESIRABLE)**  
 232. 10 1/2" Persian Garden Ice Cream Shape Bowl - White (scarce)  
 233. 10 1/2" Fenton Stag and Holly ftd. Ruffled Bowl - Mari.  
 234. 7" Fenton Stippled Rays Plate with Scale Band ext. - Mari.  
 235. Frosted Block Rose Bowl - Clam.
- 750 236. **N MEMPHIS 8 PC. PUNCH SET - PUR. (RARE AND DESIRABLE SET; NICE)**  
 237. N Fine Cut and Roses ftd. Candy Dish - Green  
 238. N Fine Cut and Roses ftd. Candy Dish - Amy.  
 239. 11" N Pillar Ribbed Vase - Olive Green  
 240. (3) N Acorn Burr Punch Cups - Green (to be sold separately)  
 241. **N ORIENTAL POPPY 7 PC. TANKARD WATER SET - MARI. (SCARCE AND VERY DESIRABLE)**  
 242. Westmoreland Corinth Jack in the Pulpit Vase - Teal  
 243. Imp. Jack in the Pulpit Vase - Mari.  
 244. Dugan Mary Ann Vase - Mari.  
 245. Jenkins Cut Flowers Vase - Mari.  
 246. Imp. 474 14 pc. Punch Set - Mari.  
 247. Imp. Fieldflower Water Pitcher - Mari.  
 248. Sunflower and Diamond Vase - Mari.  
 249. (2) Pulled Loop Vases - P. Opal. (to be sold separately)  
 250. Spiralex Vase - Pur./Clear (not Carnival)  
 325 251. **IMP. GRAPE WATER PITCHER - PUR. (OUTSTANDING COLOR AND CONDITION)**  
 252. Imp. Grape 8 pc. Punch Set - Mari.  
 253. 9 1/2" Wide Panel Swirl Vase - Green  
 254. 9 1/2" Wide Panel Swirl Vase - Amy.  
 255. 11 1/4" Ribbed Rays Vase - Lav. (a beaut)  
 256. **6" HAND VASE - BLUE (NOT CARNIVAL, RARE)**  
 257. Fenton Open Edge Advertising Hat - Mari.  
 258. Fostoria Brocaded Acorn Bowl - Ice Blue  
 259. Wide Rib Lily Bowl and Frog - Honey Amber.  
 260. Plain Covered Candy Dish - Lt. Mari.  
 261. Imp. Heavy Grape Nappy - Mari.



LOT #191





LOT #26



LOT #152



LOT #16

**Burns Auction Service**  
109 East Steuben Street  
Bath, New York 14810

FIRST-CLASS MAIL  
US POSTAGE PAID  
HAMMONDSPOUT, NY  
Permit No. 7