

BURNS

AUCTION SERVICE

A.C.G.A. Convention Auction

Thursday, July 9th, 1987

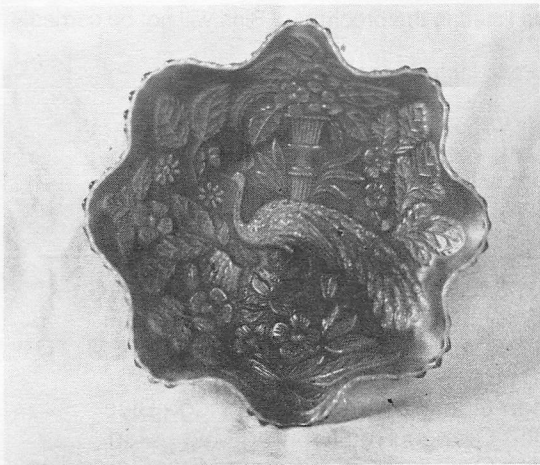
10:00 a.m. (preview 8:30 a.m.)

at the

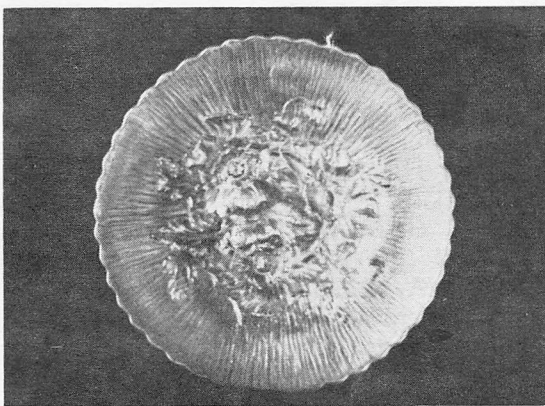
Sheraton Inn - Canandaigua

770 South Main Street

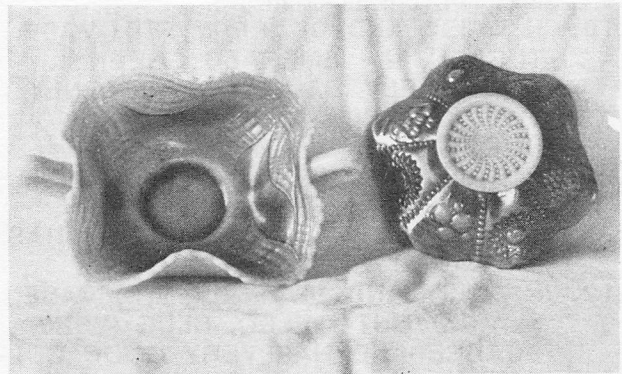
Canandaigua, N.Y. 14424



LOT #50



LOT #100



EXTRA #4

LOT #142

We're pleased to welcome all who attend to Upstate New York's Finger Lakes Area, which will host this year's A.C.G.A. Convention. We will present a selection of glass from the collection of Dennis Keck of Pennsylvania, plus other consignments. I personally believe this is one of the finest assortments of quality items at any convention auction offered this year and I hope everyone enjoys it.

The Sheraton Inn at Canandaigua, N.Y. will host the event. For further information on motel facilities or convention activities you may call the motel direct at 716-394-7800.

This is sure to be a dandy of a get together - hope to see you there!

SPECIAL NOTE: There will be an open house at the residence of Tom Burns on Saturday, July 11th from 1-6 p.m. for all those who wish to attend. Refreshments will be served and it would be a nice stop over on the way to the south or to Corning for those who wish to stop at the Glass Museum.

Burns Auction Service

Tom Burns
109 East Steuben Street
Bath, New York 14810
(607) 776-7942

Bill Richards
44 Water Street
Poland, Ohio 44514
(216) 757-2001

Mail Bids honored under the following conditions:

1. No deposit required. Bidders will take full responsibility to honor any and all bids we execute for them. Payment in full plus postage and handling required after notification and before we ship any item to them.
2. Items are bid on in perfect condition with average and above iridescence OR as listed in the brochures. Bids will not be carried out when damage on an item has been found during the auction.
3. Successful bidders will be notified by collect call from the auctioneer (so be sure to include phone number) or you may call on your own accord.
4. Phone inquiries about the glass or any other questions are welcome, but no bids will be taken over the phone.
5. All non-successful bids will receive a result summary in the mail. Results of all bids will be provided.
6. If you have some other person at the auction bidding for you, they must pay for the item before taking it.
7. Mail bids are due by Noon, Wednesday, July, 8. (If your brochure arrives late, call Tom at his home or the motel)

- | | | | |
|----------------------|---|----------------------|---|
| _____1. | Vineyard Tumbler - Dk. Mari. | _____25. | FENTON ORANGE TREE SHAVING MUG - EMERALD GREEN (SUPER COLOR ON A SUPER TOUGH ITEM TO FIND; VERY NICE) |
| _____2. | Vineyard Tumbler - Pastel Mari. (scarce) | _____26. | Fenton Orange Tree Shaving Mug - Blue |
| _____3. | Imp. Lustre Rose Tumbler - Clam. | _____27. | Fenton Orange Tree Shaving Mug - Mari. |
| _____4. | Imp. Lustre Rose Tumbler - Olive Green (ribbed interior; rare) | _____28. | Fenton Orange Tree Standard Mug, Flared Top - Blue |
| _____5. | IMP. LUSTRE ROSE TUMBLER - TEAL (VERY RARE COLOR) | _____29. | Fenton Orange Tree Standard Mug, Flared Top - Mari. |
| _____6. | IMP. TIGER LILY TUMBLER - PUR. (SUPER COLOR; RARE) | _____30. | Fenton Orange Tree Standard Mug, straight - Mari. |
| _____7. | Imp. Star and File Tumbler - Dk. Mari. | _____31. | Cherry Wreath Covered Butterdish - White (rare; gold trim, red cherries, signed Diamond D) |
| _____8. | IMP. 474 TUMBLER - LIME GREEN (VERY SCARCE COLOR) | _____32. | Fentonia Covered Butterdish - Mari. (very rare; flake on rim of base) |
| _____9. | Imp. 474 Tumbler - Mari. | _____33. | Fenton Coin Dot Rose Bowl - Mari. |
| <u>4500</u> _____10. | N DAISY AND DRAPERY FTD. VASE, TURNED IN - EMERALD GREEN (EXTREMELY RARE; ONE OF ONLY TWO KNOWN - ABSOLUTELY SUPER!) | _____34. | N Daisy and Plume ftd. Rose Bowl - Green (has Rays interior) |
| <u>260</u> _____11. | N DAISY AND DRAPERY FTD. VASE, FLARED OUT - WHITE (VERY SCARCE; THIS COLOR RARELY HAS A FLARED OUT EXAMPLE) | <u>325</u> _____35. | FENTON GARLAND FTD. ROSE BOWL - GREEN (EXTREMELY RARE; NONE AT I.C.G.A. DISPLAY) |
| <u>390</u> _____12. | N DAISY AND DRAPERY FTD. VASE, FLARED OUT - ELEC. BLUE (VERY SCARCE AND HAS VERY GOOD COLOR) | _____36. | Fenton Garland ftd. Rose Bowl - Mari. |
| _____13. | IMP. FLUTE TOOTHPICK - VAS./MARI. (VERY, VERY RARE, DARK MARI. OVERLAY; SHOWS MINOR WEAR) | _____37. | Beaded Stars domed ftd. Rose Bowl - Mari. |
| _____14. | Imp. Flute Toothpick - Pur. (super color; unusually perfect) | _____38. | Pinched in Stretch Rose Bowl - Celeste Blue (unusual stretch piece with etchings; shaped like pinched in Swirl in P. Opal.) |
| _____15. | Imp. Flute Toothpick - Green (usual corner wear) | _____39. | Fenton Flowers ftd. Rose Bowl - Green (very scarce with super color; has foot flakes) |
| _____16. | Imp. Flute Toothpick - Mari. (deep color; rough corners) | _____40. | FENTON FLOWERS FTD. ROSE BOWL - WHITE (RARE; GOOD AND FROSTY, HAS TINY FOOT FLAKE) |
| _____17. | Imp. Flute Toothpick - Crystal (perfect) | _____41. | FENTON FLOWERS FTD. ROSE BOWL - CLAM. (RARE COLOR; HAS PERFECT FEET) |
| _____18. | Trophy shaped Two Handled stemmed Toothpick Holder - Lt. Mari. (unusual) | _____42. | Fenton Flowers ftd. Rose Bowl - Pur. (scarce color; has flake off one toe) |
| _____19. | Arched Flute Toothpick Holder (Heisey?) - Lt. Mari. (scarce; light flashed color) | _____43. | Concave Flute Rose Bowl - Pur. (very scarce color) |
| _____20. | DUGAN MANY FRUITS PUNCH BOWL AND BASE - COBALT BLUE (VERY RARE COLOR FOR A VERY SCARCE SET) | _____44. | Concave Flute Rose Bowl - Mari. |
| _____21. | 10" DUGAN GARDEN PATH VARIANT ICE CREAM BOWL - WHITE (VERY SCARCE AND VERY GOOD COLOR) | <u>375</u> _____45. | FENTON MIRRORED LOTUS ROSE BOWL - WHITE (VERY, VERY RARE; A KEY ITEM) |
| _____22. | Pair 8 3/4" Six Panelled Candlesticks - Opaque Blue Stretch (very nice pair) | _____46. | Fenton Rustic Mid size Funeral Vase - Green (nice color) |
| _____23. | Vintage Grape Covered Powder Jar - Mari. | _____47. | 10 1/2" Thin Rib Vase - Olive Green |
| _____24. | Fenton Orange Tree Covered Powder Jar - Mari. | _____48. | Panelled 1/2 lb. Arched Covered Candy Dish - Tangerine (scarce Fenton stretch product) |
| | | _____49. | Panelled 1/2 lb. Covered Candy Dish - Irid. Custard (very scarce stretch product) |
| | | <u>1750</u> _____50. | 9" FENTON PEACOCK AT THE URN RUFFLED BOWL - MARI./MOONSTONE (SUPER, SUPER PIECE AND VERY RARE; GREAT COLOR) |

- _____ 106. FENTON PEACOCK AND GRAPE
FLAT PLATE - BLUE (VERY SCARCE
AND HAS GOOD COLOR; SMALL
BRUISE ON COLLAR BASE)
- _____ 107. FENTON PEACOCK AND GRAPE
FLAT PLATE - MARI. (SCARCE WITH
VERY GOOD COLOR)
- _____ 108. N G & C Handgrip Plate (one side up) - Mari.
- _____ 109. N G & C Mid Size Card Tray (two sides up) -
Mari.
- 625 _____ 110. N POPPY RELISH TRAY - LT. BLUE
OPAL. (SUPER PASTEL)
- _____ 111. N BUSHEL BASKET - AQUA OPAL.
(SUPER BUTTERSCOTCH, GREAT IR-
RID.; TINY INTERIOR CHECK IN ONE
FOOT)
- _____ 112. N DRAPERY ROSE BOWL - AQUA
OPAL. (GOOD COLOR AND OPAL.)
- _____ 113. N Fine Cut and Roses ftd. Candy Dish - Aqua
Opal. (scarce; minor sliver on one foot)
- _____ 114. N DANDELION MUG - AQUA OPAL.
(VERY SCARCE AND DESIRABLE)
- _____ 115. N DANDELION MUG WITH KNIGHTS
TEMPLAR ADVERTISEMENT - MARI.
(RARE AND DESIRABLE)
- 800 _____ 116. Iowa Mug - Mari. (scarce pattern)
- _____ 117. N PEACOCK AT THE URN LARGE
FTD. ICE CREAM BOWL - ICE GREEN
(NICE COLOR; BROKEN BUBBLE OR
PINHEAD ON OUTSIDE OF RIM)
- _____ 118. N Peacock at the Fountain Spooner - Dk. Mari.
- _____ 118A N PEACOCK AT THE FOUNTAIN
GREEN (SUPER COLOR ON A RARE
ITEM)
- _____ 119. N Star of David and Bows domed ftd. Bowl -
Pur. (excellent example)
- 850 _____ 120. CAMBRIDGE INVERTED FEATHER
PUNCH BOWL AND BASE - MARI.
(EXTREMELY RARE; HAS A COUPLE
OF SMALL NO-HARM BRUISES IN-
SIDE BOWL)
- _____ 121. Fenton Orange Tree 8 pc. Punch Set - Blue
(super color; a nice set)
- _____ 122. Peacock at the Fountain Tumbler - Amy.
- _____ 123. N G & C Cologne Bottle and Stopper - Amy.
(great color)
- _____ 124. N G & C BANDED HATPIN HOLDER -
PUR. (RARE MOLD, FINE COLOR,
PINHEAD ON ONE FOOT)
- 1200 _____ 125. N STIPPLED G & C BOWL WITH PIE
CRUST EDGE - ICE BLUE (VERY
RARE AND DESIRABLE; GOOD COI-
OR)
- _____ 126. 7 1/2" Imp. Thin Rib Morning Glory type Vase -
Smoke (very scarce color)
- _____ 127. 6" Imp. Thin Rib Morning Glory type Vase -
Mari.
- _____ 128. 8" Imp. Thin Rib Morning Glory type Vase -
Green (scarce)
- _____ 129. 9" Imp. Open Rose Bowl - Lt. Aqua/Mari. over-
lay (very unusual, nice)
- _____ 130. IMP. HANDLED FLOWER BASKET -
MILK GLASS WITH MARI. TOP HALF
(VERY RARE, ONLY ONE I'VE SEEN)
- _____ 131. IMP. FLORAL OPTIC FTD. CAKE
PLATE - MARI./MILK GLASS (VERY
RARE, ONE OF ONLY A FEW KNOWN)
- _____ 132. IMP. FLORAL OPTIC FTD. ICE CREAM
SHAPED BOWL - MARI./MILK GLASS
(VERY SCARCE)
- _____ 133. PAIR IMPERIAL JEWELS SHADES -
DK. MARI. ON MILK GLASS (PAIR I
HAVEN'T SEEN BEFORE; REALLY
NICE)
- _____ 134. PAIR BELL SHAPE SHADES - DK.
MARI. ON MILK GLASS (VERY
SCARCE PAIR)
- _____ 135. WESTMORELAND DAISY WREATH
RUFFLED BOWL - MARI./MILK GLASS
(SUPER COLOR; ONE OF THE BET-
TER EXAMPLES)
- _____ 136. IMP. INTERIOR PANELLED MID SIZE
FUNERAL VASE - LT. MARI./MILK
GLASS (VERY SCARCE SIZE AND
NICE)
- _____ 137. IMP. PLAIN SWUNG VASE - SIGNED
IMPERIAL - MARI./MILK GLASS
(SCARCE WITH SIGNATURE)
- _____ 138. SMALL SIZE SWUNG TALL VASE -
LT. MARI./MILK GLASS (VERY
SCARCE SIZE AND NICE)
- _____ 139. IMP. STRETCH SMALL CUPPED IN
ROSE BOWL - DK. MARI./MILK
GLASS (VERY SCARCE ITEM - SUP-
ER DARK IRRID.)
- _____ 140. WESTMORELAND FILE AND FAN
RUFFLED COMPOTE - MARI./MILK
GLASS (ABSOLUTELY ONE OF THE
FINEST EXAMPLES MADE)
- _____ 141. WESTMORELAND CORINTH JACK IN
THE PULPIT VASE - MARI./MILK
GLASS (SUPER EXAMPLE; VERY
GOOD IRRID.)
- _____ 142. WESTMORELAND HOBSTAR FRUIT
RUFFLED SAUCE - MARI./MILK
GLASS (VERY RARE; ONLY ONE I'VE
EVER SEEN, SUPER!)
- _____ 143. 9" Imp. Windmill tight Crimped Edge Bowl -
very Lt. Mari./Milk Glass (very light Mari. flash)
- _____ 144. Imp. Grape Wine Decanter and Stopper - Mari.
(excellent color and irrid.)
- _____ 145. 6 1/2" IMP. GRAPE FLAT PLATE -
PUR. (SUPER COLOR)
- _____ 145A IMP. GRAPE 7 PC. WATER SET -
PUR. (SUPER, SUPER COLOR AND
CONDITION)
- _____ 146. 6" Diamond Ring Ruffled Sauce - Lt. Amy.
(very scarce color for this pattern)
- _____ 147. 11" Fenton Windmill and Mums Ice Cream
Shape ftd. Bowl - Blue
- _____ 148. Fenton Stippled Rays Open Breakfast Sugar -
Vaseline/Mari. Overlay (scarce color)
- _____ 149. FENTON ORANGE TREE SCROLL
TANKARD PITCHER - MARI. (VERY,
VERY SCARCE; HAS CHECK AT TOP
OF HANDLE)

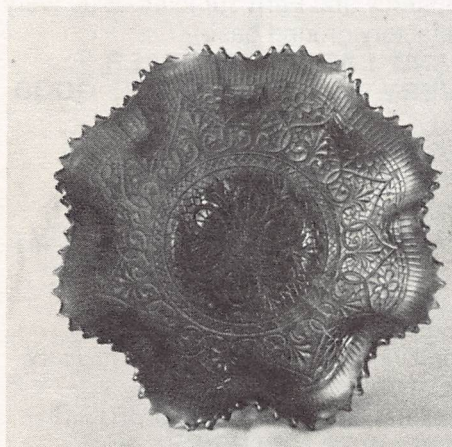
51. 9" FENTON PEACOCK AND GRAPE RUFFLED BOWL - MARI./MOONSTONE (VERY RARE; IRRID. HAS BEEN WORN ON FRONT) 1100
 52. 7 1/2" FENTON ACORN RUFFLED BOWL - MARI./MOONSTONE (VERY SCARCE ITEM; A GOOD EXAMPLE)
 53. FENTON HOLLY RUFFLED HAT - MARI./MOONSTONE (SUPER COLOR ON THIS ITEM; VERY SCARCE)
 54. BANDED BLACKBERRY RUFFLED HAT - MARI./MOONSTONE (VERY SCARCE, GOOD COLOR)
650 55. FENTON HOLLY ROUND STEMMED COMPOTE - LIME GREEN OPAL. (VERY RARE AND DESIRABLE, VERY GOOD COLOR; A NEAT PIECE)
 56. Fenton Flowering Dill Ruffled Jack in the Pulpit Hat - Mari./Moonstone (very scarce pattern and color)
 57. 15"x 4 3/4" Base - Imp. Ripple Large Funeral Vase - Mari. (very small burst bubble on rim)
 58. 12" Imp. Bullseye and Beads Swung Vase - Dk. Mari. (nice)
 59. 8" Westmoreland Corinth Vase - Aqua (nice)
 60. FENTON DRAGON AND LOTUS RUFFLED BOWL - RED (SUPER, SUPER COLOR, BUT HAS A NUMBER OF BITES ALONG THE EDGE) 500
 61. FENTON LOTUS AND POINSETTA FTD. RUFFLED SAUCE - REVERSE AMBERINA OPAL. (VERY RARE AND VERY DESIRABLE)
 62. 10" FENTON ROSE TREE RUFFLED BOWL, ORANGE TREE EXTERIOR (VERY, VERY RARE PATTERN, SMALL FLAKE ON ONE FLUTE)
 63. Fenton Orange Tree Large ftd. Fruit Bowl - Mari.
 64. FENTON CHERRY CIRCLES DEEP ROUND SAUCE - WHITE (VERY RARE COLOR FOR THIS PATTERN)
 65. 9 1/2" FENTON DRAGON AND STRAWBERRY RUFFLED BOWL - MARI. (SCARCE ITEM; SMALL AMOUNT OF ROUGHNESS ON EXTERIOR) 2700
 66. 1909 Louisville Shriners Double-Fez Shot Glass - Cranberry/Gold (not Carnival but very collectable)
 67. 1911 Rochester Shriners Handled Double Shot Glass - Cranberry/Gold (not Carnival but scarce) 825
 68. FENTON IRIS COMPOTE - BLUE (VERY SCARCE COLOR AND NICE)
 69. Fenton Iris Compote - Green (line in base)
 70. N HARVEST POPPY COMPOTE - PUR. EXTREMELY RARE COLOR FOR A VERY SCARCE PATTERN) 950
 71. N HEART AND FLOWERS COMPOTE - MARI. (DESIRABLE PATTERN)
 72. Fenton Stream of Hearts Compote - Mari. (scarce)
 73. Pennsylvania Compote - Mari. (scarce pattern)
 74. Question Mark Two Handled Stemmed Bon Bon - Lavender (scarce color and nice)
 75. CIRCLE SCROLL TUMBLER - PUR. (VERY, VERY RARE; ONE OF THE FIRST SOLD AT AUCTION IN YEARS)
 76. CIRCLE SCROLL TUMBLER - MARI. (VERY RARE WITH GOOD COLOR)
 77. COSMOS AND CANE TUMBLER - WHITE (RARE WITH GOOD COLOR)
 78. Cosmos and Cane Tumbler - Mari. (scarce)
 79. HEAVY IRIS TUMBLER - WHITE (SUPER COLOR; GOOD AND FROSTY - ETCHED SOUVENIR, ARCADIA, NEBRASKA)
 80. N G & C TUMBLER - LT. AMY./MARI. BRONZE OVERLAY (VERY SCARCE AND UNUSUAL)
 81. N DANDELION TUMBLER - ICE BLUE (RARE; DARK TINT, UNUSUAL)
 82. N ORIENTAL POPPY TUMBLER - WHITE (VERY SCARCE AND DESIRABLE)
 83. N Singing Bird Tumbler - Mari. (very nice)
 84. 9" N Strawberry Ruffled Bowl - Green (good color)
 85. N Flute Master Salt Dip - Vaseline (quite scarce)
 86. N Flute Master Salt Dip - Sapphire Blue (very scarce, small rim flake)
 87. Beaded Shell Mug - Pur.
 88. BEADED SHELL MUG - MARI. (VERY SCARCE COLOR)
 89. Beaded Shell Mug - Blue
 90. N SINGING BIRD MUG - WHITE (VERY GOOD EXAMPLE AND A QUALITY ITEM)
 91. N STIPPLED SINGING BIRD MUG - GREEN (VERY RARE VARIETY OF A POPULAR PATTERN)
 92. N Singing Bird Mug - Green (very scarce)
 93. (2) N Stippled Singing Bird Mugs - Mari. (to be sold separately)
 94. N Singing Bird Mug - Mari.
 95. N Singing Bird Mug - Blue (scarce)
 96. N Singing Bird Mug - Pur.
 97. Imp. Robin Mug - Mari.
 98. DUGAN HERON MUG - PUR. (VERY COLLECTABLE PATTERN; NICE)
 99. 8 1/2" N Rosette Octagonal Rim ftd. Bowl - Pur. (scarce pattern, has Ruffles and Rings exterior)
 100. N POPPY SHOW PLATE - ICE GREEN (SUPER PIECE; VERY DESIRABLE WITH SUPER COLOR)
 101. N POPPY SHOW PLATE - ICE BLUE (VERY RARE AND DESIRABLE; HAS GOOD COLOR)
 102. N HEART AND FLOWERS RUFFLED BOWL - AQUA OPAL. (VERY RARE AND DESIRABLE; TYPICAL COLOR, NICE)
 103. N HEART AND FLOWERS RUFFLED BOWL - EMERALD GREEN (SUPER, SUPER COLOR AND TOUGH TO FIND)
 104. N EMBROIDERED MUMS FLAT PLATE - ICE GREEN (VERY TOUGH TO FIND WITH GOOD COLOR; SMALL FLAKE ON BASE)
 105. N EMBROIDERED MUMS RUFFLED BOWL - LT. MARI. (LIGHT COLOR BUT VERY SCARCE AND DESIRABLE)

- 1550 150. M'BURG HOBNAIL ROSE BOWL - GREEN (EXTREMELY RARE; ONE OF ONLY A FEW KNOWN; HAS MFG. CHECK AT BASE RIM - SUPER COLOR)
151. M'BURG HOBNAIL ROSE BOWL - AMY. (EXTRA FINE COLOR; SMALL ROUGHNESS ON ONE HOB)
152. M'BURG SWIRL HOBNAIL ROSE BOWL - AMY. (VERY SCARCE)
153. M'BURG SWIRL HOBNAIL ROSE BOWL - MARI. (SCARCE WITH GOOD COLOR)
154. Grape Delight ftd. Rose Bowl - White (has perfect feet)
155. PALM BEACH ROSE BOWL - LT. AMY./MARI. OVERLAY (VERY SCARCE SHAPE FOR THIS PATTERN)
156. N Leaf and Beads ftd. Rose Bowl - Mari. ("Flower" Ribbed interior)
157. N Fine Cut and Roses ftd. Rose Bowl - Mari. (nice)
158. 4" x 4" Squatty Eight Ribbed Vase - P. Opal. (nice color)
159. 9" Six Panelled Vase - P. Opal. (scarce item for a simple pattern)
160. FENTON STRAWBERRY SCROLL TUMBLER - MARI. (SUPER COLOR, SMALL MFG. FLAW ON RIM; PERFECT)
161. FENTON STRAWBERRY SCROLL TUMBLER - BLUE (VERY SCARCE; HAS GOOD COLOR)
162. Imp. Octagon Collar base Tumbler - Mari.
163. IMP. FLUTE #1 TUMBLER - PUR. (SCARCE; SUPER IMPERIAL COLOR)
164. IMP. FLUTE #2 TUMBLER - PUR. (RAREST VARIANT - HAS SUPER COLOR)
165. Imp. Flute #3 Tumbler - Mari.
166. Imp. Flute #4 Tumbler - Mari. (unusual)
167. Imp. Flute #5 Tumbler - Dk. Mari. - (very scarce; very tiny rim bruise)
- 500 168. Imp. Grape Compote - Pur. (super color and very scarce)
169. Smooth Rays Compote - Pur. (super color)
170. Constellation Compote - White (good and frosty)
171. M'burg Peacock Tail Variant Compote - Amy. (super radium; has pinhead on base corner)
172. 10" M'burg Flute Vase - Mari. (very scarce; has radium irrid.)
173. 10" M'burg Peacock at the Um Master Ice Cream Bowl - Amy. (good color; has bruise on outside edge)
174. M'BURG HANGING CHERRY TUMBLER - MARI. (VERY SCARCE COLOR FOR A SCARCE PATTERN)
175. CAROLINE SINGLE HANDLED BASKET, NON RUFFLED RIM TYPE - P. OPAL. (VERY RARE; SUPER OPAL., SLIGHT WEAR INSIDE)
176. 9" Enamelled Single Flower Bowl with Candy Ribbon Edge - P. Opal. (extra nice, has deep color)
177. Westmoreland Little Beads Ruffled Compote - P. Opal.
178. N Thin Rib Mid size Funeral Vase - Green (extra nice)
179. 13 1/2" Fenton Diamond Rib Swung Vase - Amy. (extra fine color)
- 1300 180. FENTON RUSTIC FUNERAL VASE - BLUE (SUPER ELECTRIC IRRID.)
181. N Flute Funeral Vase - Mari. (nice)
182. PRINCESS LAMP - PUR. (PERFECT WITH SUPER COLOR)
183. Concave Diamond Tumbler - Celeste Blue
184. HARVEST FLOWER TUMBLER - MARI. (VERY SCARCE)
185. N G & C GOTHIC ARCHES TUMBLER - ODD BLUE (RENNINGERS BLUE, ODD BLUE-GREEN TINT, SUPER)
186. Leaf Tiers ftd. Tumbler - Mari. (very scarce; has good color)
187. Inverted Coin Dot Tumbler - Mari.
188. Fenton Butterfly and Fern Tumbler - Green (has collar base)
189. Fenton Butterfly and Fern Tumbler - Blue (very nice; has factory ground base)
190. DAISY AND LATTICE TUMBLER - PUR. (VERY SCARCE COLOR, GOOD DETAIL)
191. DAISY AND LATTICE TUMBLER - BLUE (SUPER COLOR AND VERY SCARCE)
192. BEADED STORK AND RUSHES TUMBLER - PUR. (NICE COLOR AND VERY SCARCE)
193. Fenton Grape and Lattice Tumbler - Mari.
194. Enamelled Cherries Tumbler - Dk. Mari. (very scarce color; factory ground base)
195. ENAMELLED ANEMONE TUMBLER - DK. MARI. (VERY SCARCE; REF. HOACGA NOTEBOOK #127)
196. ENAMELLED IRIS TUMBLER - PUR. (RARE; REF. HOACGA NOTEBOOK #150)
197. Floral and Grape Tumbler - Amy.
198. Floral and Grape Tumbler - Mari.
199. Imp. Lustre Rose Tumbler - Pur. (nice)
200. FISHERMANS MUG - MARI. (VERY SCARCE COLOR AND NICE)
201. Fishermans Mug - Pur.
202. 9" FENTON BUTTERFLY AND BERRY SWUNG VASE - GREEN (VERY RARE COLOR FOR THIS PATTERN; NICE)
203. 8 1/2" N Drapery Vase - Pur. (scarce)
204. 10 1/2" Fenton Rustic Vase - Mari.
205. ORANGE TREE STANDARD SIZE MUG - RED (VERY RARE AND DESIRABLE)
206. ORANGE TREE STANDARD SIZE MUG - AMBER (SCARCE COLOR)
207. ORANGE TREE STANDARD SIZE MUG - MARI./AMBER.SLAG (VERY UNUSUAL TEXTURE AND COLOR)
208. ORANGE TREE STANDARD SIZE MUG - PUR. (SCARCE COLOR)

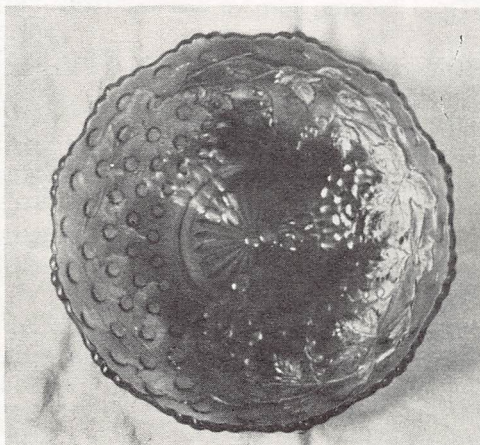
- _____ 209. ORANGE TREE STANDARD SIZE MUG - MARI./VASELINE (SCARCE COLOR)
 _____ 210. ORANGE TREE STANDARD SIZE MUG - ODD AQUA BLUE (SHADES FROM DARK TO LIGHT; SCARCE)
 _____ 211. Fenton Orange Tree Standard Size Mug - Blue Opaque (not Carnival; scarce)
 _____ 212. Stork and Rushes Mug - Mari. (irrid. inside)
 _____ 213. Stork and Rushes Mug - Mari. (irrid. outside)
 _____ 214. BO PEEP MUG - MARI. (SCARCE PATTERN)
 _____ 215. Vintage Banded Mug - Mari.
 _____ 216. (2) Wide Panel Tumblers - Mari.
 _____ 217. N Flute stemmed Sherbet - Mari. (cute)
 _____ 218. Fenton Windmill and Mums large ftd. Bowl - Mari.
 _____ 219. Imp. Columbia Flat Plate from Vase - Mari. (scarce shape)
 _____ 220. 10" Imp. Heavy Grape Chop Plate - Green
 _____ 221. Imp. Heavy Grape Master Berry Bowl - Smoke
 _____ 222. 6 Ruffled Smooth Panelled Bowl - Smoke
 _____ 223. Imp. Grape Goblet - Mari.
 _____ 224. Imp. Starlyte Electric Shade - Dk. Mari.
 _____ 225. Imp. Soda Gold Console Bowl - Clam.
- _____ 226. Imp. Double Scroll Console Bowl with Swirl Interior - Clam.
 _____ 227. Imp. Acanthus Deep Round Bowl - Green (some rough areas)
 _____ 228. Imp. Panelled ftd. Creamer, Souvenir of Wytotitlock, Me. - Mari.
 _____ 229. Westmoreland Open Breakfast Sugar - Teal
 _____ 230. Panelled Stemmed Sherbet - Mari.

Extra Items of Note

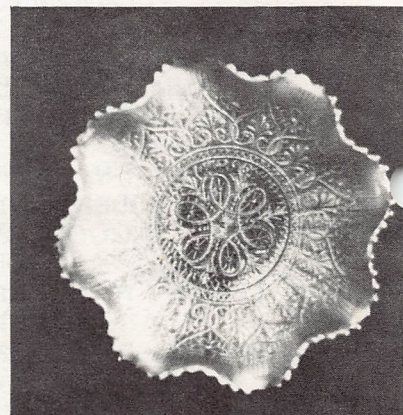
- _____ 1. M'BURG BIG FISH ICE CREAM SHAPE BOWL - GREEN (VERY SCARCE PATTERN, HAS FAIRLY GOOD IRRID.)
 _____ 2. M'BURG TROUT AND FLY ICE CREAM SHAPE BOWL - AMY. (SCARCE SHAPE AND PRETTY NICE IRRID.)
 _____ 3. M'BURG VINTAGE ICE CREAM SHAPE BOWL WITH HOBNAIL EXT. - MARI. (RARE PATTERN AND NICE SATINY IRRID.; HAS WEAR ON HIGH SPOTS OF GRAPES)
 _____ 4. FENTON PRAYER RUG BON BON - MARI./CUSTARD (RARE AND VERY DESIRABLE)



LOT #103



EXTRA #3



LOT #102

Burns Auction Service
 109 East Steuben Street
 Bath, New York 14810

FIRST-CLASS MAIL
 US POSTAGE PAID
 HAMMONDSPORT, NY
 Permit No. 7