

# CARNIVAL GLASS AUCTION



**Sunday, September 7, 1986**

**1:00 p.m.**

**HOLIDAY INN  
I-35 at Industrial Blvd.  
EMPORIA, KANSAS**

**Mr. and Mrs. Leonard Schlup, owners**

Mr. and Mrs. Schlup have collected Carnival Glass for several years, buying many of their pieces from Mrs. Hartung. This collection contains many pieces with good color and iridescence.

**Preview:** Sunday, 10:00 a.m.

**Terms:** Cash. Checks accepted if previously approved.

**Motel Reservations:** May be made by calling the Holiday Inn directly at 316-343-2200.

**Write-in Bids:** Write-in bids are accepted with a 25% deposit. Your bid will be handled just as if you are present and bidding. It is possible that you might get an item for less than your bid. Your bid will not be executed unless the item is in mint condition. If your bid is successful, you will be notified by mail and the item will be sent just as soon as a check for the balance due is received. If your bid is unsuccessful, your check will be returned to you along with a statement of the selling price.



Douglass, Ks. 67039 (316) 746-2694





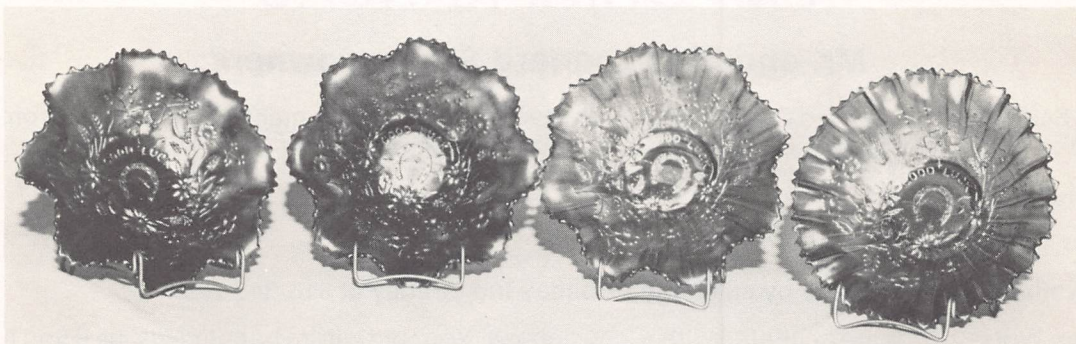
# CARNIVAL GLASS AUCTION

SEPT!  
7  
1986

EMPORIA  
KANSAS



TWO ORIENTAL POPPY WATER SETS - AMYT.



GOOD LUCK BOWLS



ACORN BURRS SET - PURPLE



1. Two-handled Rays bonbon - amyt
2. Vintage 7" bowl - amyt
3. Six-fluted Apple Blossom bowl - gn
4. Peacock Tail bowl - amyt
5. Wild Rose 7" bowl - m
6. 7" Millersburg bowl - amyt
7. Northwood Rays bowl - gn
8. Peacock at Fountain bowl - gn
9. Raindrop bowl - p
10. **Northwood Oriental Poppy tankard and six tumblers - amyt**
11. Grape & Cable berry set - m
12. Grape & Cable fluted bowl - p
13. Cherry Circle bonbon - b
14. Dragon & Lotus bowl - blue
15. Dugan's Cherry bowl - peach opal
16. Holly stemmed compote - b
17. Vintage nut bowl - m
18. Garland rose bowl - gn
19. Little Flowers rose bowl - m
20. **Northwood Grape Arbor tankard and six tumblers - white**
21. Hat-shaped bowl - amyt
22. Millersburg Seaweed bowl - amyt
23. Persian Medallion bowl - gn
24. Grape & Cable breakfast set - m
25. **Rose Show bowl - aqua opal**
26. Dragon & Lotus bowl - amyt
27. Rays bowl, candy ribbon-edge - green
28. 10" Cherry Circle bowl - blue
29. Holly bowl - m
30. **Acorn Burrs water pitcher and six tumblers - purple**
31. Millersburg Raspberry bowl - amyt
32. Grape & Cable spatula-footed bowl - gn
33. Fruits & Flowers bowl - amyt
34. Peacock at Urn bowl - m
35. **Town pump - purple**
36. Thistle bowl, candy ribbon-edge - m
37. Flute bowl - amyt
38. Hat-shaped tumbler - m
39. Leaf-handled nappy
40. Northwood Grape & Cable water pitcher and six tumblers - amyt
41. Holly bowl - cobalt
42. Plain amethyst bowl
43. Creamer and sugar - m
44. Poinsettia & Dahlia bowl - blue
45. **Northwood Dandelion mug - amethyst**
46. Imperial Grape bowl - m
47. Grape & Cable master ice cream bowl - green
48. Two Flowers bowl - m
49. Daisy Chain plate - helios green
50. **Northwood Oriental Poppy tankard and six tumblers - amethyst**
51. Wheat hat-shaped bowl - blue
52. Ribbon Tie bowl - green
53. Master swan - amyt
54. Master swan - ice blue
55. **Northwood Dandelion mug - green**
56. Master swan - ice green
57. Holly bowl - amyt
58. Good Luck bowl - m
59. Blackberry basketweave-edge bowl - blue
60. Northwood Grape & Cable pitcher and six tumblers - amyt
61. Grape & Cable dresser tray - green
62. Grape & Cable cologne bottles (2) - gn
63. Grape & Cable powder box - green
64. Grape & Cable hatpin holder - green
65. Northwood Grape & Cable tankard - purple
66. **Beaded Drape rose bowl - aqua opalescent**
67. Three Fruits spatula-footed bowl - amyt
68. Louisa rose bowl - m
69. Stemmed compote - gn
70. Tiger Lily pitcher and five tumblers - marigold
71. Grape & Cable ruffled bowl - amyt
72. Open Rose plate - green
73. Three Fruits candy ribbon-edge bowl
74. Grape & Cable shot glass - m
75. Hearts & Flowers compote - white
76. **Fenton's Grape & Cable bowl - red**
77. Leaf-handled nappy
78. Grape & Grape Leaves spatula-footed bowl
79. Wishbone footed bowl - amyt
80. Fashion pitcher and six tumblers - marigold
81. 6" Rays Pattern bowl
82. Good Luck bowl - m
83. Wishbone bowl, footed - amyt
84. Leaf-handled nappy
85. **Nautilus - peach opalescent**
86. Autumn Acorn bowl - m
87. Deep amethyst bowl
88. Spatula-footed Peacock & Grape bowl - green
89. Daisy Chain bowl - m
90. **Panelled Dandelion water set - green**
91. Cherry Circle two-handled bonbon - amyt
92. Dragon & Lotus bowl - amyt
93. Holly bowl - blue
94. Butterfly & Berry berry set - m
95. **Drapery rose bowl - aqua opalescent**
96. Octagon decanter & eight wines - m
97. Fashion punch bowl and cups - m
98. Fashion punch bowl and cups - m
99. Peacock at Fountain butterdish, creamer and sugar - amyt
100. **Peacock at Fountain water set - amyt**
101. Grape & Gothic Arches butterdish, creamer and spooner - blue
102. Fashion butterdish, creamer, sugar and spooner - m
103. Water Lily & Cattail banana bowl - m
104. Northwood Rays bowl - amyt
105. Kittens bowl - marigold
106. Grape & Lotus bonbon - m
107. Rays bonbon - gn
108. Ribbon Tie bowl - amyt
109. Rays compote - gn
110. Northwood Grape & Cable water set - purple
111. Stork & Rushes compote - m
112. Orange Tree sherbet - m
113. Peacock at Urn compote - m
114. Imperial Pansy relish
115. Dragon & Lotus bowl - m
116. Cobblestone bowl, candy ribbon-edge
117. Stag & Holly - m
118. Cobblestone bowl - green
119. Orange Tree bowl - m
120. Imperial Grape water set - marigold
121. Seaweed bowl - amyt
122. Peacock Tail bowl - m
123. Maple Leaf berry bowl and sauce - p
124. Orange Tree fruit bowl - m
125. Ski Star bowl - peach opalescent
126. Raindrop bowl - peach opalescent
127. Leaf bowl - peach opalescent
128. Rays bowl - peach opalescent
129. Rays bowl - peach opalescent
130. Honeycomb bowl - peach opalescent
131. Apple Blossom bowl - peach opalescent
132. Fish Net bowl - peach opalescent
133. Rays bowl - peach opalescent
134. Flowers & Frames bowl - peach opalescent
135. Six peach opalescent bowls
136. Captive Rose bowl - amyt
137. Windmill bowl - p
138. Three Fruits berry set - m
139. Cherry Mikado compote - b
140. Grape & Cable pitcher and five tumblers
141. Cherry Mikado compote - m
142. **Nesting Swan bowl - green**
143. Dragon & Lotus - blue
144. **N Grape & Cable butterdish - green**
145. Vintage nut bowl - cobalt blue
146. Captive Rose bowl - blue
147. **Poppy Show plate - cobalt blue**
148. **Rose Show plate - blue**
149. Strawberry ruffled bowl - amyt
150. Four-Seventy-Four water set - marigold
151. Butterfly bonbon - cobalt
152. Louisa rose bowl - blue
153. Grape & Cable pin tray - green
154. Grape & Cable dresser tray - green
155. Two Grape & Cable cologne bottles - green
156. Grape & Cable Whimsey punch cup - green
157. Grape & Cable powder box - gn
158. Wreathed Cherry banana bowl - m, with gold on Cherries
159. Grape & Cable large centerpiece bowl - p
160. Grape & Cable banana bowl - p
161. Grape & Cable banana bowl - cobalt
162. Good Luck bowl - cobalt
163. Good Luck bowl - cobalt
164. Good Luck bowl - green
165. Good Luck bowl - cobalt
166. Good Luck bowl - cobalt
167. **Acorn Burrs table set**
168. Two Grape & Cable candlesticks
169. Heart & Vine bowl - m
170. Windflower bowl - m
171. Stag & Holly bowl - m
172. Kittens cup and saucer - m
173. Kittens cup and saucer - m
174. Peacock Tail hat shape - b
175. Rambling Rose compote - amyt
176. Captive Rose bowl - green

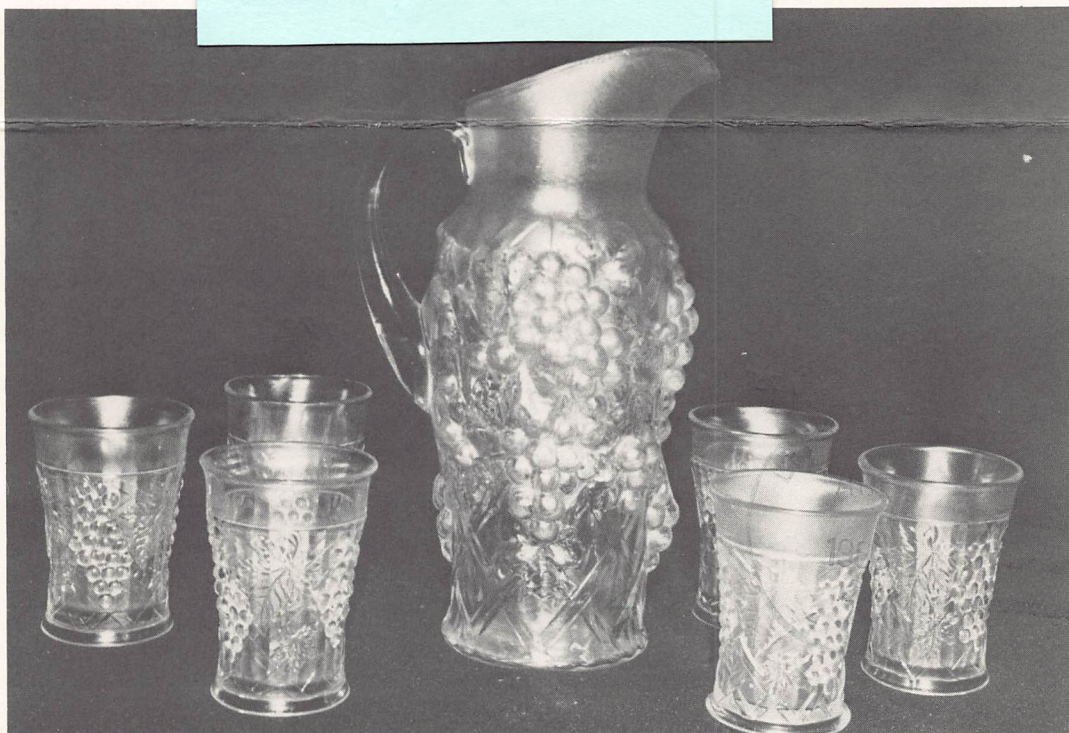




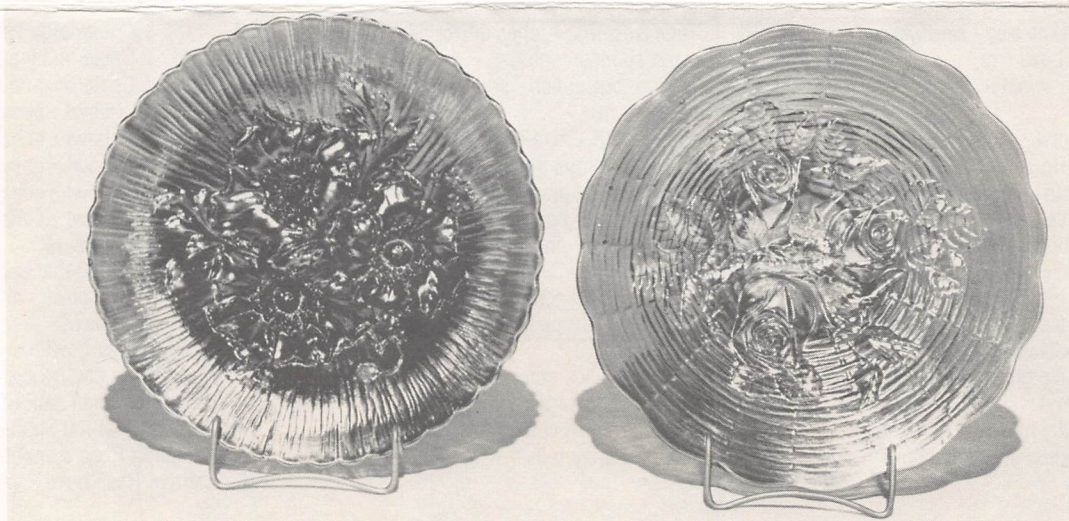
FIRST CLASS



Address Correction Request



WHITE GRAPE ARBOR SET



POPPY SHOW & ROSE SHOW PLATES - BLUE