

LOT #100



AUCTION SERVICE

CARNIVAL GLASS AUCTION

Friday and Saturday, August 22 & 23, 1986

Fri. 4 p.m. Preview, 6 p.m. Auction

Sat. 8 a.m. Preview, 9 a.m. Auction

CLEVELAND/HUDSON HOLIDAY INN

240 Hines Hill Rd.

Hudson, Ohio 44236

(located on Rt. 8 - just off Ohio Turnpike Exit 12)

Phone 216-653-9191

- | | |
|---|--|
| _____ 1. Beaded Purse - Dark | _____ 24. 7" Fenton Acorn Ice Cream Shape Bowl - |
| _____ 2. Star Medallion Standard Tumbler - Mari. | Aqua (scarce color) |
| _____ 3. Robin Mug - Dk. Mari. | _____ 25. FISHERMANS MUG - DK. MARI. (VERY |
| _____ 4. Panelled Souvenir Mug - Winthrop, Maine - | GOOD COLOR; SCARCE ITEM) |
| Mari. | _____ 26. Fishermans Mug - Pur. |
| _____ 5. Mary Ann Vase - Mari. | _____ 27. 9" Autumn Acorns Bowl w/Candy Ribbon |
| _____ 6. Butterfly and Berry Swung Vase - Mari. | Edge - Blue |
| _____ 7. N Drapery Vase - Mari. | _____ 28. HERON MUG W/ENAMELED "SOUVENIR OF |
| _____ 8. 9" Rustic Vase - White | REDWOOD FALLS, MN." - PUR. |
| _____ 9. (Three) Diamond and Bows Vase - Blue | _____ 29. Orange Tree Standard Mug - Flared - Lt. Blue |
| _____ 10. (2) Knotted Beads Vases - Green (good color) | _____ 30. ORANGE TREE STANDARD MUG - FLARED - |
| _____ 11. Westmoreland Little Beads Small Compote - | AQUA/MARI. (VERY SCARCE AND |
| P. Opal. | DESIRABLE ITEM) |
| _____ 12. N G&C Deep Hat Shape - Green | _____ 31. Orange Tree Standard Mug - Flared - Amy. |
| _____ 13. Circle Scroll Jack-in-the-Pulpit Hat Shape - | (very scarce color; has tiny nick on base) |
| Mari. (scarce shape) | _____ 32. Orange Tree Standard Mug - Mari./Vas. |
| _____ 14. (2) Ribbed Jack-in-the-Pulpit Vases - Lt. Mari. | (scarce) |
| _____ 15. Vineyard 7 pc. Water Set - Mari. | _____ 33. N DANDELION MUG - PUR. (VERY SCARCE |
| _____ 16. VINEYARD WATER PITCHER - PUR. (RARE | AND DESIRABLE ITEM) |
| ITEM AND NICE) | _____ 34. N SINGING BIRD MUG - GREEN (SCARCE |
| _____ 17. (3) Vineyard Tumblers - Pur. (scarce; to be | AND DESIRABLE COLOR) |
| sold separately) | _____ 35. N Singing Bird Mug - Blue (scarce) |
| _____ 18. Butterfly and Fern Tumblers - Amy. | _____ 36. N Singing Bird Mug - Pur. |
| _____ 19. Windflower Handled Nappy - Mari. (scarce) | _____ 37. N Singing Bird Mug - Mari. |
| _____ 20. WINDFLOWER HANDLED NAPPY - ICE | _____ 38. N Singing Bird Ind. Berry Bowl - Pur. |
| GREEN (VERY RARE AND DESIRABLE; | _____ 39. FENTON LATTICE AND GRAPE 4 PC. |
| STRETCH EFFECT) | WATER SET - BLUE (SUPER PITCHER AND |
| _____ 21. Stork and Rushes 4 pc. Water Set - Mari. | TOUGH TO FIND) |
| (scarce pattern) | _____ 40. N Daisy and Plume Ftd. Rose Bowl - Berry |
| _____ 22. Fenton Open Edge Ruffled Hat - Vas./Mari. | Interior - Pur. (scarce) |
| _____ 23. Fenton Open Edge Ruffled Hat - Odd Cobalt | _____ 41. N Daisy and Plume Ftd. Rose Bowl - Berry |
| Blue | Interior - Amy. |

We continue our 1986 season with a dispersal of glass from the Howard Fletcher collection from Georgetown, Texas. There is a nice selection of glass for all levels of collecting and I'm sure all attending will be pleased.

The Holiday Inn - Cleveland/Hudson will host the event. Located in Southeastern area of Cleveland just off the Ohio Turnpike. For reservations, call the motel direct at 216-653-9191.

Mail bids honored under the following conditions:

1. 100% deposit required on total number of pieces bid on.
2. Items are bid on in perfect condition with average and above average iridescence OR as listed in the brochure. Bids will not be carried out when damage on an item has been found during the auction.
3. Successful bidders will be notified by Collect Call from the auctioneer (so be sure to include phone number) or you may call on your own accord starting Tuesday.
4. Phone inquiries about the glass or any other questions are welcomed, but no bids will be taken over the phone - we must have a mail bid to carry out your bid.
5. All non-successful bids will receive their checks plus a result summary in the mail. Results of all bids will be provided.
6. If you have some other person at the auction bidding for you, they must pay for the item before taking it.
7. Mail bids are due by Wednesday, August 20, 1986.

Send Mail Bids To:

Tom Burns Auction Service
109 East Steuben Street
Bath, New York 14810

If we can be of any assistance or for further information of this or future auctions, contact:

BURNS AUCTION SERVICE

TOM BURNS, AUCTIONEER
109 East Steuben Street
Bath, New York 14810
(607) 776-7942

BILL RICHARDS, AUCTIONEER
44 Water Street
Poland, Ohio 44514
(216) 757-2001

Licensed and Bonded by the Department of Commerce
in favor of the State of Ohio

— SPECIAL NOTICE —

**Mail Bids May Be Called Into The Holiday Inn
on Thursday, August 21 and
until 4:00 p.m. Friday, August 22
216-653-9191 (c/o Tom Burns)**

- | | |
|---|---|
| _____ 42. SEA THISTLE (OR CANE AND SCROLL)
ROSE BOWL - DK. MARI. (RARE PATTERN) | _____ 50. MID SIZE ZIPPER LOOP LAMP - 9" TALL -
SMOKE (PERFECT W/GOOD COLOR AND
IRID.; RARE ITEM) |
| _____ 43. Grape Delight Ftd. Rose Bowl - Pur. | _____ 51. Kokomo Ftd. Rose Bowl - Mari. |
| _____ 44. Pearly Dots Rose Bowl - Green | _____ 52. N Leaf and Beads Ftd. Rose Bowl - Amy. (has
interior pattern) |
| _____ 45. FENTON HORSEHEAD MEDALLION FTD.
JACK-IN-THE-PULPIT BOWL - BLUE
(SCARCE SHAPE AND COLOR) | _____ 53. N Leaf and Beads Ftd. Rose Bowl - Green
(stippled rays interior) |
| _____ 46. Louisa Ftd. Rose Bowl - Amy. | _____ 54. N Leaf and Beads Ftd. Rose Bowl - Cobalt
Blue (scarce) |
| _____ 47. Fenton Two Flowers Ftd. Rose Bowl - Mari. | _____ 55. N Leaf and Beads Ftd. Rose Bowl - Mari. |
| _____ 48. N Daisy and Plume Ftd. Rose Bowl w/Stippled
Rays Int. - Green | _____ 56. N DRAPERY ROSE BOWL - AQUA OPAL.
(VERY RARE AND DESIRABLE) |
| _____ 49. N Daisy and Plume Stemmed Rose Bowl -
Mari. | |

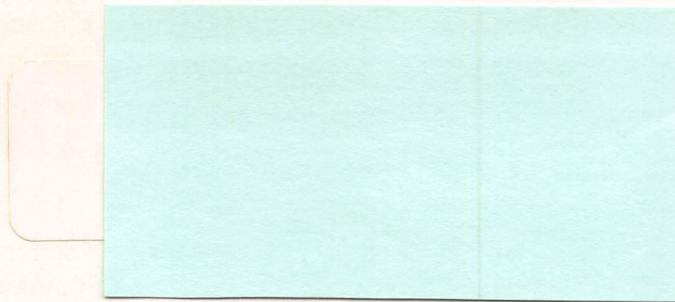
- _____ 57. **N DRAPERY ROSE BOWL - AQUA OPAL.**
(RARE; HAS DIFFERENT RUFFLE THAN
PRIOR ONE)
- _____ 58. **N DRAPERY ROSE BOWL - BLUE OPAL.**
(RARE; DIFFERENT TINT W/LITE IRID.)
- _____ 59. Persian Medallion Rose Bowl - Lt. Mari.
- _____ 60. **PERSIAN MEDALLION ROSE BOWL -**
GREEN (VERY RARE COLOR FOR THIS
PATTERN; SUPER)
- _____ 61. Persian Medallion Rose Bowl - White (scarce
color; nice)
- _____ 62. Persian Medallion Hair Receiver - Blue
- _____ 63. Persian Medallion Hair Receiver - Dk. Mari.
- _____ 64. Wreath of Roses Tri-Shaped Pulled Whimsey
from Rose Bowl - Mari.
- _____ 65. **7½" FENTON STIPPLED RAYS/SCALE**
BAND EXT. RUFFLED BOWL - RED (NICE
PIECE; HAS MANUFACTURERS FLAW)
- _____ 66. **FENTON BLACKBERRY SPRAY SQUARE**
HAT - RED (SCARCE; GOOD EXAMPLE)
- _____ 67. **9" FENTON HOLLY RUFFLED**
BOWL - AMBERINA/BRICK RED (VERY
NICE; HAS GOLD, BRONZE IRID.)
- _____ 68. 9" Fenton Holly 6 Ruffled Bowl - White
- _____ 69. 8½" Fenton Holly Ice Cream Shape
Bowl - Amy.
- _____ 70. **9" FENTON HOLLY BOWL W/PIE CRUST**
EDGE - MARI./VAS. (SCARCE COLOR)
- _____ 71. 9" Fenton Holly Bowl w/Pie Crust
Edge - Green (scarce color)
- _____ 72. 9" Fenton Holly Bowl w/Pie Crust Edge - Blue
- _____ 73. Fenton Holly Ruffled Bowl - Mari.
- _____ 74. N Double Loop Chalice - Blue (scarce)
- _____ 75. **N PEACOCKS BOWL W/PIE CRUST**
EDGE - ELEC. BLUE (A BEAUTY AND VERY
DESIRABLE)
- _____ 76. N Peacocks Bowl w/Pie Crust Edge - Mari.
(scarce)
- _____ 77. **N PEACOCKS RUFFLED BOWL - BLUE**
(SCARCE, VERY GOOD COLOR AND IRID.)
- _____ 78. **N PEACOCKS PLATE - WHITE (SCARCE**
W/GOOD IRID.)
- _____ 79. **N PEACOCKS PLATE - ICE GREEN (SCARCE**
AND DESIRABLE)
- _____ 80. **N PEACOCKS PLATE - PUR. (SCARCE**
W/GOOD COLOR)
- _____ 81. **N PEACOCKS PLATE - MARI. (GOOD COLOR**
AND IRID.)
- _____ 82. **N PEACOCK AT THE URN IND. ICE CREAM**
BOWL - ICE BLUE (VERY DESIRABLE;
GOOD COLOR)
- _____ 83. N Good Luck Ruffled Bowl - Amy. (very good
irid.)
- _____ 84. **N GOOD LUCK BOWL W/PIE CRUST EDGE -**
GREEN (SCARCE; HAS GOOD COLOR;
BASKETWEAVE EXT.)
- _____ 85. **N GOOD LUCK BOWL W/PIE CRUST EDGE -**
ELEC. BLUE (VERY NICE ITEM; GOOD
COLOR; RIBBED EXT.)
- _____ 86. N Good Luck Bowl w/Pie Crust Edge - Mari.
(good color)
- _____ 87. **N DANDELION 6 PC. TANKARD WATER**
SET - PUR. (DESIRABLE PATTERN; GOOD
COLOR)
- _____ 88. N Dandelion 7 pc. Tankard Water Set - Mari.
(nice set)
- _____ 89. N Dandelion Tankard Water Pitcher - Mari.
(scarce; has ribbed interior)
- _____ 90. **N ACORN BURR 7 PC. WATER SET - PUR.**
(DESIRABLE PATTERN; HAS BRONZE IRID.)
- _____ 91. N Grape Arbor 7 pc. Tankard Water Set -
Mari. (very nice set w/good color)
- _____ 92. N Raspberry 7 pc. Water Set - Mari. (nice set)
- _____ 93. 10" Fenton Lotus and Poinsettia Ftd. Bowl -
Blue
- _____ 94. 7½" Stippled Rays w/Scale Band Ext. Plate -
Mari.
- _____ 95. **6½"-7" DUGAN CHERRIES TIGHT**
RUFFLED PLATE - PUR. (SCARCE W/GOOD
COLOR)
- _____ 96. 6½" Pine Cone Plate - Mari.
- _____ 97. 7½" Grapevine Lattice Ruffled Plate - White
(scarce)
- _____ 98. 7½" Flowers and Beads (ext.) Plate - P. Opal.
(scarce)
- _____ 99. **7½" PINE CONE PLATE - AMY. (SCARCE**
COLOR AND SIZE)
- _____ 100. **9" FENTON PETER RABBIT PLATE - MARI.**
(VERY RARE; HAS GOOD COLOR AND
DETAIL)
- _____ 101. 7½"-8" Horsehead Medallion Plate - Mari.
(very good color and detail)
- _____ 102. **9" HEART AND VINE PLATE - BLUE**
(SCARCE PATTERN; HAS SILVERY IRID.)
- _____ 103. **9" CAPTIVE ROSE FLAT PLATE - GREEN**
(SCARCE PATTERN AND COLOR)
- _____ 104. 9" Windflower Plate - Mari.
- _____ 105. **7½"-8" ILLINOIS SOLDIERS AND SAILORS**
PLATE - BLUE (VERY RARE AND
DESIRABLE; HAS GOOD COLOR)
- _____ 106. 7½" Fenton Vintage Grape Plate - Blue
- _____ 107. 7½" Imperial Heavy Grape Plate - Pur. (very
good color)
- _____ 108. 7½" Imperial Heavy Grape Plate - Mari.
- _____ 109. 9" Fanciful Ruffled Plate - P. Opal. (scarce;
desirable item)
- _____ 110. 9" Round Up Flat Plate - Blue (scarce)
- _____ 111. 9" Round Up Ruffled Plate - P. Opal. (scarce;
desirable item)
- _____ 112. 9" Apple Blossom Twig Flat Plate - Blue
(scarce)
- _____ 113. 9" Imperial Open Rose Flat Plate - Amber
- _____ 114. 10½" Imperial Heavy Grape Chop Plate -
Mari. (good color)
- _____ 115. **7½"-8" FENTON 1911 ATLANTIC CITY ELK**
PLATE - BLUE (VERY RARE ITEM; HAS
BRUISE ON BASE)
- _____ 116. 9" N Strawberry Plate w/Basketweave Ext. -
Amy.
- _____ 117. **8½" N WISHBONE FTD. PLATE - PUR.**
(SCARCE AND DESIRABLE)
- _____ 118. 7¾" N Grape and Cable Plate - Amy.

- _____119. 8¾" Apple Blossom Twig Flat Plate - Mari. (scarce color)
- _____120. 9" Fanciful Ruffled Plate - White (good color)
- _____121. Imperial Acanthus Plate - Smoke (super color and irid.)
- _____122. **IMPERIAL SAND AND SHELL FLAT PLATE - SMOKE (VERY RARE AND DESIRABLE; GOOD COLOR)**
- _____123. Imperial Embossed Scroll Plate - Pur. (super color and irid.)
- _____124. Imperial Embossed Scroll Plate - Helios Green
- _____125. **IMPERIAL HEAVY GRAPE CHOP PLATE - AMBER (VERY SCARCE AND DESIRABLE)**
- _____126. 9" Fenton Holly Plate - Blue (good color)
- _____127. 9" Fenton Holly Plate - Amy. (scarce color; but has silvery irid.)
- _____128. 9" Fenton Leaf Chain Plate - Green (scarce)
- _____129. 9" Fenton Three Fruits Plate - Green
- _____130. 9" Fenton Three Fruits Plate - Amy.
- _____131. 9" Fenton Three Fruits Plate - Blue
- _____132. 9" Ribbon Tie Ruffled Plate - Amy. (scarce color)
- _____133. 9" Ribbon Tie Ruffled Plate - Blue
- _____134. 9" N Three Fruits Plate w/Basketweave Ext. - Pur.
- _____135. 9" N Three Fruits Stippled Plate - Pur. (scarce)
- _____136. 9" Fenton Orange Tree Plate - Mari. (super irid.)
- _____137. 9" Fenton Orange Tree Plate - White (scarce)
- _____138. Miniature Blackberry Compote - Blue
- _____139. Miniature Blackberry Compote - Mari.
- _____140. **ENAMELED PERIWINKLE DECORATED TANKARD WATER PITCHER - MARI. (GOOD MARI. AND GOOD DECOR; SCARCE PATTERN)**
- _____141. Enameled Cherries 5 pc. Water Set - Blue
- _____142. **FENTON FLOWERS FTD. ROSE BOWL - AMY. (SCARCE COLOR FOR THIS PATTERN)**
- _____143. Pinched-in Swirl Rose Bowl - P. Opal.
- _____144. Beaded Star Domed Small Rose Bowl - Mari.
- _____145. Garland Ftd. Rose Bowl - Blue
- _____146. Curved Star Centerpiece w/Flower Frog - Mari.
- _____147. Orange Tree Shaving Mug - Mari.
- _____148. **ORANGE TREE ORCHARD 7 PC. WATER SET - BLUE (VERY DESIRABLE AND RARE SET)**
- _____149. Orange Tree Orchard Tumbler - Blue
- _____150. **ORANGE TREE VARIENT TANKARD WATER PITCHER - MARI. (GOOD STRONG MARIGOLD; GOOD IRID.; VERY RARE)**
- _____151. Orange Tree Varient Tumbler - Mari.
- _____152. Panelled Dandelion Tumbler - Amy.
- _____153. 6" Cherry Circles Flat Plate - Mari.
- _____154. 7" Persian Garden Flat Plate - Mari.
- _____155. **RAMBLER ROSE 4 PC. WATER SET - AMY. (SCARCE PATTERN IN A SCARCE COLOR)**
- _____156. **RAMBLER ROSE 7 PC. WATER SET - MARI. (SCARCE)**
- _____157. (3) Rambler Rose Tumblers - Blue
- _____158. **IMPERIAL ZIPPERED HEART 7 PC. BERRY SET - PUR. (RARE SET AND DESIRABLE)**
- _____159. Large Imperial Grape Ruffled Berry Bowl - Pur.
- _____160. **IMPERIAL EMBOSSED SCROLL GOBLET - GREEN (RARE SHAPE AND DESIRABLE)**
- _____161. Dugan Wishbone and Spades Low Ruffled Sauce - P. Opal.
- _____162. Dugan Ski Star Ind. Ruffled Sauce - Pur. (scarce)
- _____163. Large Rays Int./Jeweled Heart Ext. Ruffled Bowl - Pur. (super color and irid.)
- _____164. Persian Garden Round Ind. Sauce - White
- _____165. Lattice and Grape 7 pc. Water Set - Mari. (super color)
- _____166. Fan Ftd. Individual Sauce - P. Opal.
- _____167. Wishbone and Spades Ind. Ruffled Sauce - P. Opal.
- _____168. Petal and Fan Ruffled Sauce - P. Opal.
- _____169. Lined Lattice Squatty Vase - P. Opal. (super opal.)
- _____170. **FENTON BOUQUET 5 PC. WATER SET - BLUE (SCARCE PATTERN; SCARCE COLOR)**
- _____171. Fenton Bouquet 7 pc. Water Set - Mari. (scarce set)
- _____172. **LARGE SKI STAR 8 RUFFLED BOWL W/JEWELED HEART EXT. - P. OPAL. (EXTREMELY RARE W/THIS EXTERIOR PATTERN)**
- _____173. Large Ski Star Ruffled Bowl w/Compass Ext. - P. Opal.
- _____174. 7½" Fishscale and Beads Tight Edged Plate - P. Opal. (scarce)
- _____175. **N THREE FRUITS FTD. BOWL W/MEANDER EXT. - AQUA OPAL. (SCARCE AND VERY DESIRABLE)**
- _____176. N Fruit and Flowers Stemmed Bon Bon - Blue
- _____177. N Fruit and Flowers Stemmed Bon Bon - Pur.
- _____178. Fenton Vintage Grape 7 pc. Berry Set - Green (scarce set)
- _____179. Fenton Feathered Serpent 7 pc. Berry Set - Mari.
- _____180. **N SINGING BIRD 7 PC. WATER SET - GREEN (GOOD DESIRABLE SET; NICE)**
- _____181. Imperial Soda Gold Water Pitcher - Mari.
- _____182. Imperial Soda Gold Tumbler - Mari.
- _____183. Imperial Fieldflower 7 pc. Water Set - Mari.
- _____184. Imperial Grape 7 pc. Water Set - Mari.
- _____185. **IMPERIAL GRAPE DECANTER AND STOPPER - PUR. (SCARCE)**
- _____186. Imperial Grape Decanter and One Wine - Mari.
- _____187. Imperial Grape Decanter and 4 Wines - Green (one wine cracked)
- _____188. Golden Harvest 7 pc. Wine Set w/Stopper - Mari.
- _____189. Imperial Octagon 7 pc. Wine Set - Mari.
- _____190. **IMPERIAL STAR AND FILE 7 PC. WINE SET - MARI.**

- _____191. Daisy and Lattice 7 pc. Tankard Water Set - Mari.
- _____192. Fenton Scotch Thistle Ruffled Compote - Green
- _____193. Fenton Peacock at the Urn Ruffled Compote - Mari./Vas. (scarce color)
- _____194. M'burg Peacock Tail Variet Compote - Mari. (radium)
- _____195. **CAMBRIDGE DOUBLE STAR 7 PC. WATER SET - GREEN (TOUGH SET TO FIND)**
- _____196. M'burg 7¼" Blackberry Wreath Ruffled Bowl - Green (satiny)
- _____197. M'burg Primrose Ruffled Bowl - Amy. (radium)
- _____198. M'burg Mayan Ice Cream Shape Bowl - Green (radium)
- _____199. M'burg Rays and Ribbons Ruffled Bowl - Mari. (satiny)
- _____200. **M'BURG HANGING CHERRY WATER PITCHER - AMY. (VERY RARE ITEM AND QUITE DESIRABLE)**
- _____201. **M'BURG HANGING CHERRY 4 PC. TABLE SET - MARI. (SCARCE SET)**
- _____202. M'burg Whirling Leaves Ruffled Bowl - Amy. (satiny)
- _____203. M'burg 7½" Isaac Benesch Ruffled Advertising Bowl - Amy. (scarce)
- _____204. M'burg 10¾" Peacock at the Urn Ruffled Bowl - Mari. (satiny)
- _____205. **M'BURG COURTHOUSE 6 RUFFLED BOWL - AMY. (VERY RARE; GOOD COLOR AND IRID.)**
- _____206. **M'BURG NESTING SWAN RUFFLED BOWL - AMY. (SCARCE; GOOD RADIUM FINISH AND IRID.)**
- _____207. **M'BURG 10" FLEUR DE LEIS TIGHT RUFFLED BOWL - AMY. (RADIUM FINISH; SCARCE)**
- _____208. M'burg Diamond 7 pc. Water Set - Green (scarce; rough at base of pitcher)
- _____209. M'burg 8" Holly Sprig Ruffled Bowl - Mari. (radium)
- _____210. **M'BURG SWIRL HOBNAIL SWUNG VASE - GREEN (RARE COLOR)**
- _____211. M'burg 10" Blackberry Wreath Ruffled Bowl - Lt. Mari. (satiny)
- _____212. N 9" Grape and Cable Plate - Plain Ext. - Amy.
- _____213. N 9" Grape and Cable Plate - Basketweave Ext. - Pur.
- _____214. N 8" Grape and Cable Card Tray - 2 Sides Up - Mari.
- _____215. **N GRAPE AND CABLE CANDLELAMP - GREEN (VERY RARE AND DESIRABLE; NICE)**
- _____216. **N GRAPE AND CABLE CANDLELAMP - MARI. (RARE COLOR AND VERY DESIRABLE)**
- _____217. N Grape and Cable Bon Bon - Green (has marigold overlay; nice)
- _____218. N Grape and Cable Variet Plate - Amy. (has plain exterior)
- _____219. N Grape and Cable Deep Round Handled Nappy - Mari.
- _____220. **N 11" GRAPE AND CABLE RUFFLED BOWL - WHITE (VERY RARE SHAPE AND SIZE)**
- _____221. **(2) N GRAPE AND CABLE COLOGNES W/STOPPERS - AMY. (TO BE SOLD SEPARATELY)**
- _____222. N Grape Leaves Ruffled Bowl - Pur.
- _____223. Fenton Floral and Grape 7 pc. Water Set - Blue (good example w/good color)
- _____224. Fenton Floral and Grape 5 pc. Water Set - Mari.
- _____225. Fenton Floral and Grape Water Pitcher - Amy. (scarce color)
- _____226. Fenton Floral and Grape Tumbler - Amy. (scarce)
- _____227. 9" Coral Ruffled Bowl - Mari. (scarce pattern)
- _____228. 9" Pods and Posies Ruffled Bowl - Emerald Green (scarce w/super irid.)
- _____229. **FENTON THISTLE BANANA BOAT - BLUE (A BEAUTY)**
- _____230. **ODD INTAGILO THISTLE CHOP PLATE - LT. MARI. (SUPER COLOR AND IRID.; I'VE NEVER SEEN IT BEFORE)**
- _____231. **9" PEACOCK AND GRAPE ICE CREAM SHAPED BOWL - AMBER (RARE COLOR)**
- _____232. **9" PEACOCK AND GRAPE RUFFLED BOWL - BLACK AMY. (HAS SLAG EFFECT; IRID. ON REVERSE)**
- _____233. Butterfly and Berry 7 pc. Water Set - Mari.
- _____234. Louisa Ftd. Bowl (or Deep Plate) - Teal (rare color)
- _____235. 7½" Pine Cone Ruffled Bowl - Amy.
- _____236. **(2) RUSTIC FUNERAL VASES - MARI. (SCARCE; TO BE SOLD SEPARATELY)**
- _____237. Mid-Size Rustic Funeral Vase w/CRE - White (scarce color)
- _____238. Mid-Size Rustic Funeral Vase - Green
- _____239. Pulled Loop Vase - P. Opal.
- _____240. Rose Wreath 6 pc. Punch Set - Ice Cream Shaped Bowl - Green (scarce shape; repaired on base of bowl)
- _____241. Fenton Fine Rib Vase - Aqua Base
- _____242. Concave Flute Vase - Mari. (radium finish)
- _____243. N Fine Cut & Roses Ftd. Candy Dish - White (has fancy interior)
- _____244. N Wild Strawberry Handgrip Plate - Mari. (w/metal frame)



**LOT
#230**



FIRST-CLASS MAIL
U.S. POSTAGE
PAID
Middieburg, Pa. 17842
Permit No. 1

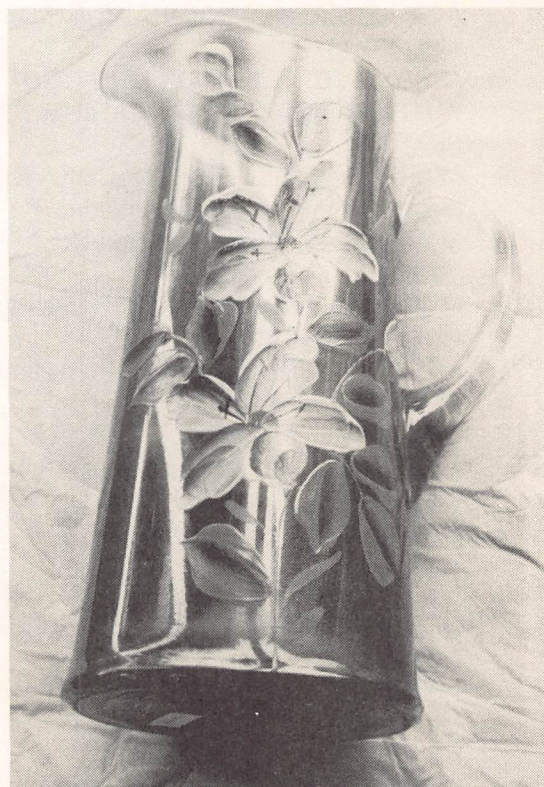
Tom Burns
109 East Steuben Street
Bath, N.Y. 14810
(607) 776-7942

— EXTRA ITEMS —

1. N PEACOCK AT THE URN CHOP PLATE -
PUR. (VERY RARE AND DESIRABLE)
2. Fluffy Peacock Tumbler - Amy. (scarce)
3. Sowerby Diving Dolphin Ftd. Rose Bowl -
Mari. (rare item)
4. Horsehead Medallion Ftd. Rose Bowl - Mari.
5. N Beaded Cable Ftd. Rose Bowl - Blue
6. N Beaded Cable Ftd. Rose Bowl - Mari.
7. Grape Delight Ftd. Rose Bowl - White (good
feet)
8. Grape Delight Ftd. Rose Bowl - Mari. (good
feet)



LOT #105



LOT #140