



LOT NO. 25

BURRIS

AUCTION SERVICE

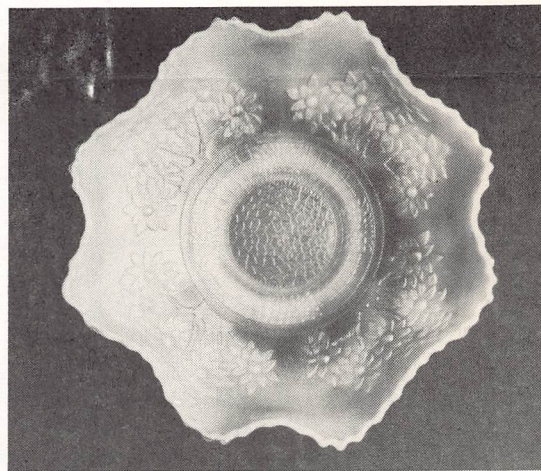
ACGA CONVENTION
AUCTION

Thursday, July 10, 1986
10 A.M.

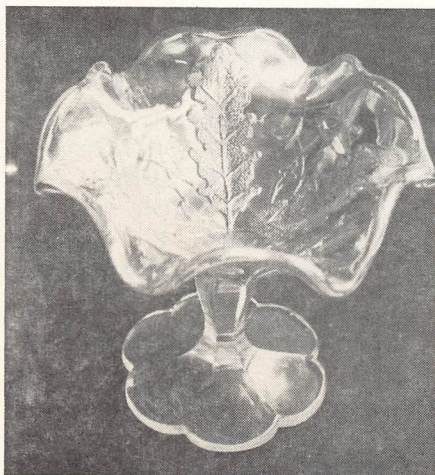
ECONO LODGE MOTEL
(formerly Holiday Inn)
New Philadelphia, Ohio



LOT NO. 70



LOT NO. 135



LOT NO. 80



LOT NO. 75

We offer a fine selection of rare and desirable glass for the Annual ACGA Convention Auction. There are a number of consignors contributing to the auction including a selection from the Leonard Harsch collection and from as far away as Australia. There should be something for everyone. Hope to see you there.

Mail bids honored under the following conditions:

1. 100% deposit required on total number of pieces bid on.
2. Items are bid on in perfect condition with average and above average iridescence OR as listed in the brochure. Bids will not be carried out when damage on an item has been found during the auction.
3. Successful bidders will be notified by Collect Call from the auctioneer (so be sure to include phone number) or you may call on your own accord starting Tuesday.
4. Phone inquiries about the glass or any other questions are welcomed, but no bids will be taken over the phone - we must have a mail bid to carry out your bid.
5. All non-successful bids will receive their checks plus a result summary in the mail. Results of all bids will be provided.
6. If you have some other person at the auction bidding for you, they must pay for the item before taking it.
7. Mail bids are due by Tuesday, July 8, 1986.

Send Mail Bids To:

Tom Burns Auction Service
109 East Steuben Street
Bath, New York 14810

If we can be of any assistance or for further information of this or future auctions, contact:

BURNS AUCTION SERVICE

TOM BURNS, AUCTIONEER
109 East Steuben Street
Bath, New York 14810
(607) 776-7942

BILL RICHARDS, AUCTIONEER
44 Water Street
Poland, Ohio 44514
(216) 757-2001

Licensed and Bonded by the Department of Commerce
in favor of the State of Ohio

<u>30</u>	1. Pastel Swan Salt - Ice Green	<u>105</u>	17. Little Barrel Novelty - Green (scarce; has good color)
<u>20</u>	2. Pastel Swan Salt - Pink	<u>37 1/2</u>	18. (5) Star Medallion Punch Cups - Mari. (sold so much each)
<u>37 1/2</u>	3. Pastel Swan Salt - Celeste Blue	<u>55</u>	19. N G&C Punch Cup - Mint Green (scarce)
<u>110</u>	4. PASTEL SWAN SALT - PUR. (NICE COLOR; VERY SCARCE)	<u>80 65 40</u>	(3) N Memphis Punch Cups - Mint Green (scarce; to be sold separately)
<u>35</u> <u>20x3</u>	5. (4) Fenton Buttermilk Goblets - Amy. (to be sold separately)	<u>115</u>	21. FENTON PEACOCK AT THE URN RUFFLED COMPOTE - MARI./VAS. (SCARCE COLOR; NICE ITEM)
<u>10</u>	6. N Strawberry Sweetmeat Compote - Crystal *	<u>42 1/2</u>	22. Rose Spray Ruffled Compote - Mari. (scarce)
<u>60</u>	7. Flute Toothpick Holder - Mari. (very nice example)	<u>65</u>	23. Persian Medallion Stemmed Compote - Blue
<u>65</u>	8. Flute Toothpick Holder - Pur.	<u>90</u>	24. N BLOSSOM TIME STEMMED COMPOTE - PUR. (SCARCE PATTERN)
<u>155</u>	9. Framed Board of (50) Buttons - Dark	<u>4000</u>	25. N ORIENTAL POPPY 7 PC. WATER SET - MINT GREEN (SUPER, SUPER RARE SET; HAS RIBBED INT.)
<u>45</u>	10. Imp. Star of David Ruffled Bowl - Pur. (super color and irid.)	<u>450</u>	26. N Oriental Poppy 7 pc. Water Set - Mari. (good color)
<u>60</u>	11. Imp. Waffle Block Handled Flower Basket - Teal (rare color)	<u>500</u>	27. N Oriental Poppy Tankard Water Pitcher - Pur. (rare; really nice irid.)
<u>50</u>	12. Imp. Tulip & Cane Goblet - Dk. Mari.	<u>1800</u>	28. 474 7 PC. WATER SET - PUR. (VERY RARE; ONLY COMPLETE SET I'VE SEEN)
<u>25</u>	13. Imp. Fieldflower Tumbler - Mari.		
<u>35</u>	14. N Dandelion Tumbler - Pur.		
<u>250</u>	15. N DANDELION TANKARD WATER PITCHER - HOREHOUND (VERY RARE COLOR)		
<u>155</u>	16. WHITE OAK TUMBLER - MARI. (VERY RARE PATTERN)		

27 1/2 N.S. ~~25~~ 110 *90 Persian bowl + on wheeling handle*

~~30~~ 105 *90 for Cherry on bowl handle * Peachbl. Hat Variant Compote - gr.*

- 425 28A. 474 MILK PITCHER - PUR. (RARE AND DESIRABLE) -
- 60 28B. Imp. 474 Low Ruffled Compote - Dk. Mari. (rare shape for this pattern)
- 525 29. IMP. 474 TALL VASE - DK. MARI. (VERY RARE AND DESIRABLE)
- 200 30. Imp. Flute 8 pc. Berry Set - Pur. (super color)
- 45 31. Imp. Flute One Handled Nappy - Pur. (scarce)
- 70 32. 9" Fenton Chrysanthmum Ruffled Bowl - Odd Green (very unusual color) *
- 65 33. 9" Fenton Round Lotus & Poinsettia Ftd. Bowl - Amy. (very good irid.)
- 90 34. Golden Wedding 1/10 Nip Bottle w/Contents & Label - Mari.
- 45 50 35. (2) Pods & Posies Ruffled Ind. Berry Bowls - Pur. (scarce; has basketweave ext.)
- 55 36. N Singing Bird Mug - Pur.
- 145 37. N Singing Bird Mug w/Amazon Hotel Adv. - Pur.
- 35 38. Robin Mug - Mari./Odd Base Color)
- 225 39. Heron Mug - Pur. (rare w/good color)
- 800 40. BEADED SHELL MUG - WHITE (VERY RARE AND DESIRABLE; HAS GOOD IRID.)
- 475 41. N DANDELION MUG - AQUA OPAL. (RARE AND DESIRABLE)
- 75 42. Fishermans Mug - Pur.
- 60 43. Sailboat Wine Glass - Blue
- 310 44. WESTMORELAND CHECKERBOARD GOBLET - LT. MARI. (VERY RARE; TOUGH TO FIND IN THIS COLOR)
- 225 45. Heavy Iris Tankard Pitcher - Mari.
- 45 46. (3) Heavy Iris Tumblers - Mari. (to be sold separately) *
- 75 47. Fenton Holly Ruffled Hat - Amberina
- 200 48. Fenton Holly Ruffled Hat - Red -
- 375 49. Fenton Holly Ruffled Compote - Red (rare and desirable) -
- 750 50. FENTON 9" HOLLY RUFFLED BOWL - RED (RARE AND DESIRABLE) -
- 825 51. STAG & HOLLY RUFFLED SPATULA FTD. BOWL - RED (RARE ITEM; HAS GOOD RED COLOR)
- 1150 52. FENTON TWO FLOWERS SPATULA FTD. BOWL - RED (VERY RARE AND DESIRABLE)
- 850 53. FENTON PEACOCK AND GRAPE RUFFLED SPATULA FTD. BOWL - RED (RARE AND DESIRABLE)
- 300 54. 7 1/2" Fenton G&C Low Ruffled Bowl - Red (scarce)
- 850 55. 10" LITTLE FLOWERS LARGE ICE CREAM SHAPE BOWL - RED (VERY RARE AND DESIRABLE) -
- 775 56. 10" VINTAGE GRAPE LARGE ICE CREAM SHAPE BOWL - RED (RARE AND DESIRABLE)
- 425 57. 7 1/2" Fenton Acorn Round Bowl - Red (scarce)
- 50 58. 7 1/2" Stippled Rays Ruffled Bowl - Rev. Amberina
- 65 59. Persian Medallion 2 Handled Bon Bon - Red (damaged)

185 *Opal Leaf & Beads Rose bowl*

85 *18 Finesse & Rose Candy **

- 900 60. 9" FENTON PERSIAN MEDALLION - RUFFLED BOWL - RED (VERY RARE AND A GOOD DARK RED)
- 225 61. Blackberry Spray Ruffled Hat - Red -
- 125 62. Fenton Fern Panels Ruffled Hat - Red -
- 120 63. HEISEY MELLON RIBBED SPITTOON - LT. MARI. (VERY RARE WHIMSEY AND QUITE DESIRABLE)
- 230 64. HEISEY MELLON RIBBED SPITTOON - LT. AMY. (VERY RARE AND DESIRABLE; NICE)
- 350 65. M'BURG SWIRL HOBNAIL SPITTOON - PUR. (GOOD SHAPE AND VERY GOOD COLOR)
- 175 66. M'BURG SWIRL HOBNAIL ROSE BOWL - MARI. (VERY GOOD COLOR AND DESIRABLE)
- 130 67. M'burg Hanging Cherry Large Ice Cream Bowl - Amy. (satiny irid.)
- 170 68. M'burg Hanging Cherry Large Round Berry Bowl - Green (good color and tough shape)
- 45 69. M'burg Hanging Cherry Small Ind. Berry Bowl - Green
- 2100 70. M'BURG MULTI FRUITS & FLOWERS WATER PITCHER - AMY. (VERY, VERY RARE; HAS GOOD COLOR; SMALL FLAW)
- 200 71. M'burg Hanging Cherry Covered Butter Dish - Amy. (good color)
- 12 1/2 72. M'burg Hanging Cherry Sugar Lid Only - Amy.
- 85 73. (2) M'burg Hanging Cherry Spooners - Amy. (to be sold each)
- 250 74. M'burg Nesting Swan Ruffled Bowl - Amy. (satiny; nice)
- 1600 75. M'BURG DIAMOND PUNCH BOWL, BASE & 6 TUMBLERS - MARI. (VERY, VERY RARE AND IS AN ORIGINAL SET)
- 20 150 76. 9" M'burg Peacock at the Urn Ruffled Bowl - Green (satiny irid.)
- 175 77. 10" M'burg Peacock at the Urn Large Ruffled Bowl - Green (satiny)
- 275 78. M'burg Strawberry Wreath Ruffled Compote - Amy. (super irid.)
- 275 79. M'burg Strawberry Wreath Round Compote - Mari. (good color; has odd shape)
- 1250 80. M'BURG ACORN RUFFLED COMPOTE - MARI./VAS. (SUPER, SUPER RARE; EXCELLENT COLOR; HAS TINY PINHEAD)
- 375 81. M'BURG TROUT & FLY RUFFLED BOWL - GREEN (VERY GOOD COLOR AND IRID.; RARE) *Big Fish*
- 450 82. M'BURG TROUT & FLY RUFFLED BOWL - MARI. (GOOD COLOR AND IRID.)
- 50 83. Swirl Pinched-in Tri-Cornered Rose Bowl - P. Opal.
- 180 84. HONEYCOMB ROSE BOWL - P. OPAL. (SCARCE AND DESIRABLE)
- 1400 85. N LEAF & BEADS FTD. ROSE BOWL - ICE BLUE (SUPER RARE AND DESIRABLE; GOOD IRID.)
- 360 86. N BEADED CABLE W/RIBBED INT. ROSE BOWL - AQUA. (VERY UNUSUAL COLOR FOR THIS ITEM) *
- 40 87. N Beaded Cable Ftd. Rose Bowl - Blue *

300 Poppy Show Plate - m

- 170 88. N Drapery Rose Bowl - Pur. (scarce)
100 89. N Drapery Rose Bowl - Amy. (scarce)
500 90. UNLISTED GEOMETRIC DIAMOND ROSE BOWL - LT. MARI. (RARE; ONLY ONE I'VE EVER SEEN)
700 90A. PANELLED THISTLE DIAMOND SHAPE WATER PITCHER - BLUE (VERY RARE AND UNUSUAL)
75 91. N Eight Sided Bushel Basket - White
350 92. N BUSHEL BASKET - ROUND - AQUA OPAL. (W/BUTTERSCOTCH; RARE)
210 93. N TORNADO VASE - PUR. (SCARCE)
225 94. WESTMORELAND SCALES RUFFLED BOWL - BLUE OPAL. (VERY SCARCE)
400 95. WESTMORELAND DAISY WREATH RUFFLED BOWL - BLUE OPAL. (GOOD COLOR AND VERY SCARCE)
200 96. Westmoreland Smooth Rays Ruffled Bowl - Blue Opal. (scarce)
325 97. N CORN VASE - ICE GREEN (SCARCE AND DESIRABLE)
150 98. Bracket Lamp - Mari.
80 99. Bracket Lamp - Mari.
850 100. 9" POPPY SHOW PLATE - ICE BLUE (SUPER RARE AND DESIRABLE; NICE COLOR)
375 101. 9" Poppy Show Ruffled Bowl - Amy. (scarce)
275 102. 9" Rose Show Ruffled Bowl - Blue
420 103. 9" ROSE SHOW PLATE - MARI. (SUPER COLOR AND IRID.; AND PERFECT)
475 104. 9" ROSE SHOW PLATE - GREEN (VERY RARE; HAS PINHEAD AND SLIGHT ROUGHNESS)
375 105. 9" N THREE FRUITS STIPPLED RUFFLED BOWL - AQUA OPAL. (RARE AND DESIRABLE)
425 106. N THREE FRUITS SPATULA FTD. BOWL - AQUA OPAL. (RARE AND DESIRABLE)
190 107. N THREE FRUITS DOMED BOWL/BASKETWEAVE EXT. - WHITE (RARE AND DESIRABLE)
60 108. N Three Fruits Ruffled Bowl - Green
250 109. N THREE FRUITS STIPPLED PLATE - ODD LAVENDER (VERY RARE COLOR; HAS WEAR ON FRUITS)
125 110. N FRUIT & FLOWERS STIPPLED STEMMED BON BON - ODD BLUE (SCARCE; BLUE W/A TEAL TINGE)
55 111. N Three Fruits Bowl w/Pie Crust Edge - Amy.
75 112. N Three Fruits Plate - Pur.
65 113. N Three Fruits Plate - Mari.
200 114. N 7½" FRUITS & FLOWERS PLATE - PUR. (SCARCE; HAS EXCELLENT IRID.)
825 115. 9" CONCORD GRAPE PLATE - DK. MARI. (VERY RARE AND SUPER IRID.)
300 116. 9" Heart & Vine Flat Plate - Blue (scarce)
125 117. 9½" Acanthus Plate - Mari.
80 118. Fenton Holly Plate - Blue (slight roughness)
95 119. 10½" Stag & Holly Large Ftd. Ice Cream Bowl - Dk. Mari. (good color)
375 120. STAG & HOLLY SPATULA FTD. PLATE - MARI. (VERY RARE AND DESIRABLE)

950 Green Walnut Homestead plate

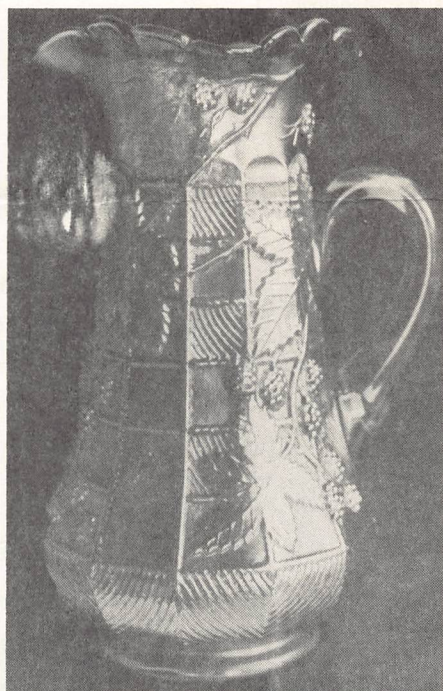
- 65 121. 10" Imp. Oval & Round Flat Plate - Mari. (rare shape for this pattern; some wear)
250 122. N G&C Stippled Plate w/Odd Rose Adv. - Green (rare and desirable)
450 123. 9" FENTON THISTLE RUFFLED BOWL - AQUA (VERY RARE COLOR AND GOOD COLOR)
125 124. 6" Little Flowers Ruffled Bowl - Mari./Vas. (scarce color)
1300 125. N PEACOCK AT THE URN 7 PC. ICE CREAM SET - WHITE (RARE SET AND HAS GOOD COLOR)
900 126. N PEACOCKS PIE CRUST EDGE BOWL - GREEN (GOOD COLOR AND IRID.; VERY RARE)
200 127. N NIPPON BOWL W/PIE CRUST EDGE - ICE BLUE (SCARCE AND NICE)
250 128. N HEART & FLOWERS RUFFLED BOWL - ICE BLUE (DESIRABLE PATTERN)
35 129. 6" Vintage Grape Plate - Amy.
140 130. 6" PINE CONE PLATE W/PANELLED EXT. - GREEN (SUPER COLOR)
50 131. 6" Imp. Grape Plate - Green
37½ 132. 6" Star & File Plate - Mari.
75 133. WAFFLE BLOCK WATER PITCHER - LT. MARI. (VERY RARE W/GOOD IRID.)
200 105 134. (2) WAFFLE BLOCK TUMBLERS - LT. MARI. (RARE W/GOOD IRID.)
1400 135. ORANGE TREE RUFFLED BOWL - MARI./MILK GLASS (SUPER, SUPER RARE AND HAS GOOD COLOR)
45 136. Orange Tree Covered Powder Jar - Mari.
175 137. FENTON BASKETWEAVE LARGE SIZE OPEN EDGE RUFFLED HAT - ICE GREEN (RARE SIZE AND HAS GOOD COLOR AND IRID.)
575 138. PANELLED DANDELION 7 PC. TANKARD WATER SET - AMY. (VERY RARE AND NICE)
65 139. Palm Beach Spooner - White
225 140. N ACORN BURR COVERED BUTTER DISH - GREEN (RARE COLOR AND NICE)
50 141. N Acorn Burr Creamer - Green
75 142. N Acorn Burr Spooner - Green
90 143. Interior Drape Bulbous Water Pitcher - Mari.
125 144. U.S. Glass Buttress Water Pitcher - Lt. Mari. (good color)
650 145. BLACKBERRY BLOCK TANKARD WATER PITCHER - DK. MARI. (RARE WITH EXCELLENT COLOR)
65 22 146. (3) Blackberry Block Tumblers - Dk. Mari. (nice; to be sold separately)
110 147. N G&C Covered Powder Jar - Mari.
180 148. N G&C Small Pin Tray - Pur.
400 149. N G&C BANDED STIPPLED BANANA BOAT - GREEN (VERY RARE AND HAS VERY GOOD COLOR AND IRID.)
1600 150. N G&C 8 PC. SMALL SIZE PUNCH SET - WHITE (VERY RARE AND DESIRABLE; HAS GOOD COLOR)
80 151. N G&C Powder Jar Base Only - Ice Green

80 Pulled Loop Vase P.O.
70 Scales Bowl - P.O.

- 100 152. N G&C VARIENT PLATE - SMOKEY OLIVE GREEN (SUPER COLOR; HAS VERY ODD BASE COLOR; SMALL FLAKE ON BASE)
- 130 153. N G&C 7 pc. Water Set - Mari. *Imp. Purple*
- 375 154. N G&C 6 pc. Water Set - Pur.
- 800 155. N G&C BANQUET PUNCH BOWL & BASE - PUR.
- 1000 156. N G&C WHISKEY DECANTER & STOPPER - PUR.
- 450 157. N G&C WHISKEY DECANTER & STOPPER - MARI.
- 175 + 3 158. (5) N G&C Whiskey Shot Glasses - Dk. Mari. (very nice; one is damaged; to be sold separately)
- 75 22 1/2
- 175 159. N G&C Centerpiece Bowl - Pur. (rare item)
- 150 160. N G&C Centerpiece Bowl - Mari. (scarce item)
- 525 161. N G&C BANANA BOAT - ICE BLUE (VERY RARE AND UNDERATED; GOOD COLOR)
- 300 162. N G&C Banana Boat - Blue (scarce item)
- 675 163. N Peacock at the Fountain 7 pc. Berry Set - Pur. (scarce set) *urn*
- 100 164. Strawberry Bon Bon - Red (damaged)
- 400 165. PANTHER IND. FTD. RUFFLED SAUCE - RED (RARE AND DESIRABLE ITEM)
- 300 166. SAILBOAT RUFFLED SAUCE - RED/AMBERINA (SCARCE ITEM)
- 550 167. LOTUS & POINSETTIA FTD. SAUCE - RED (DESIRABLE)
- NS 168. Stippled Rays Ruffled Sauce - Red
- 1900 150 169. FENTON 9" ORANGE TREE RUFFLED BOWL - RED (VERY RARE AND DESIRABLE)
- 900 170. FENTON 9" DRAGON AND LOTUS BOWL - RED (VERY RARE AND DESIRABLE; GOOD RED)
- 625 171. 7 1/2-8" LEAF CHAIN RUFFLED BOWL - RED (RARE PATTERN IN THIS COLOR)
- 450 172. FENTON VINTAGE GRAPE FTD. FERNERY - RED/AMBERINA (GOOD COLOR FOR THIS PATTERN)
- 325 173. PEACOCK LAMP BASE W/SOME HARDWARE - RED (RARE ITEM)
- 500 174. FENTON HORSEHEAD MEDALLION COLLAR BASE RUFFLED BOWL - RED/AMBERINA (VERY RARE PATTERN IN THIS COLOR)
- 275 175. RUSTIC FUNERAL VASE - GREEN (GOOD COLOR AND IRID.)
- 225 176. Rustic Funeral Vase - Mari.
- 1050 177. BUTTERFLY & BERRY 7 PC. WATER SET - GREEN (VERY SCARCE SET IN THIS COLOR)
- 325 178. BUTTERFLY & BERRY SWUNG VASE - RED (VERY RARE)
- 165 179. FENTON FINE RIB VASE - RED
- 325 180. N LOTUS & POINSETTIA FTD. RUFFLED BOWL - ELEC. BLUE (VERY DESIRABLE PATTERN W/GOOD COLOR)
- 175 181. N Good Luck Ruffled Bowl - Pur. (has blue irid.; scarce)
- 25 182. Fenton Flowering Dill Hat - Mari./Vas. (scarce)
- 50 183. Fenton Blackberry Spray Hat - Mari./Vas. (scarce)
- 125 184. Fenton 9" Holly Ruffled Bowl - Mari./Vas.
- 45 185. N Leaf & Beads Ftd. Nut Bowl w/Smooth Ray Int. - Green
- 60 186. N Wishbone Ftd. Ruffled Bowl - Dk. Mari.
- 85 187. Fenton Stag & Holly Spatula Ftd. Ruffled Bowl - Mari.
- 40 188. (2) Fine Rib Vases - Red (severely damaged)



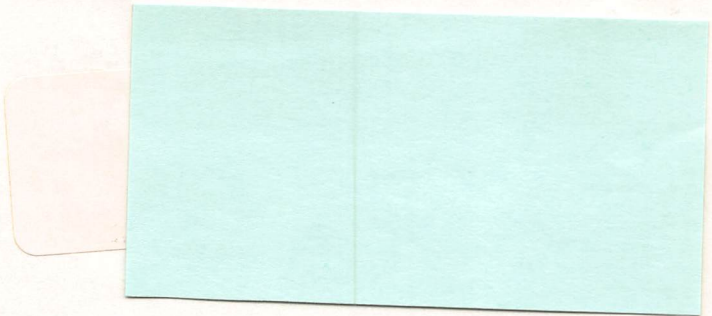
LOT NO. 90



LOT NO. 145



LOTS NO. 63, 65, 64

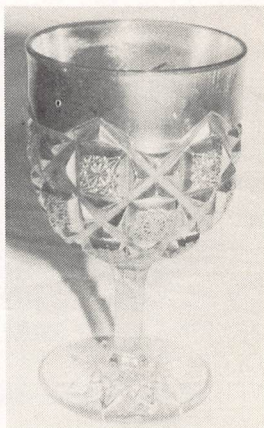


FIRST-CLASS MAIL
U.S. POSTAGE
PAID
Middleburg, Pa. 17842
Permit No. 1

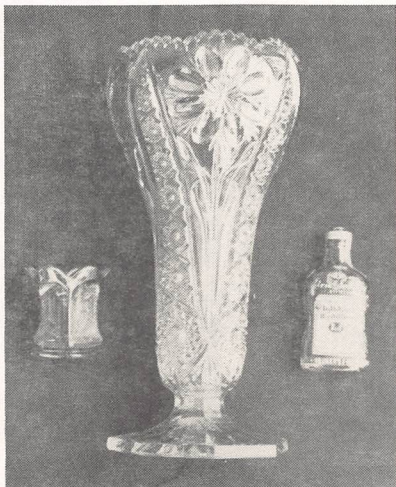
Tom Burns
109 East Steuben Street
Bath, N.Y. 14810
(607) 776-7942



LOT NO. 90A



LOT NO. 44



LOTS NO. 34, 29, 7



LOT NO. 144