

LOT NO. 130

# BURNS

## AUCTION SERVICE

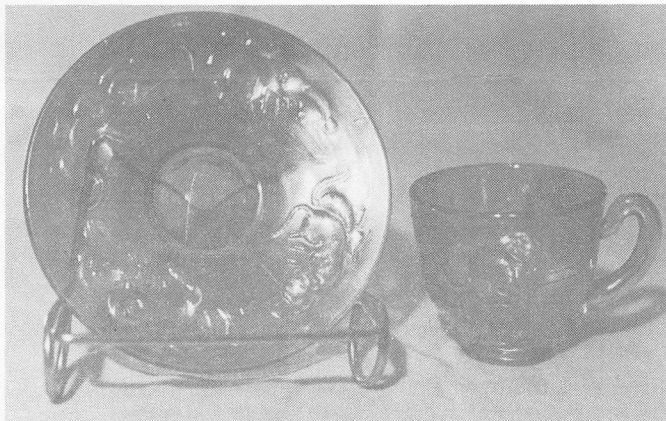
### CARNIVAL GLASS AUCTION

**Saturday, May 31, 1986**

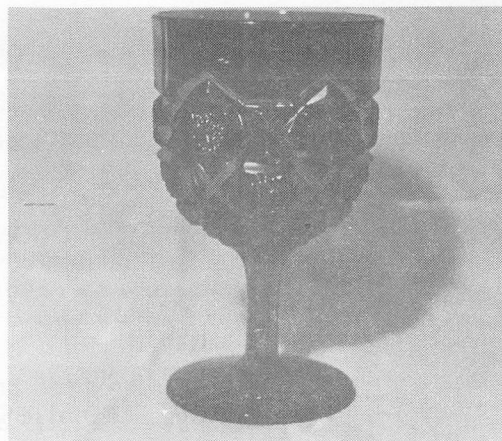
ECONO LODGE MOTEL  
(formerly Holiday Inn)  
New Philadelphia, Ohio

Preview - Friday evening and Saturday at 8:00 a.m.

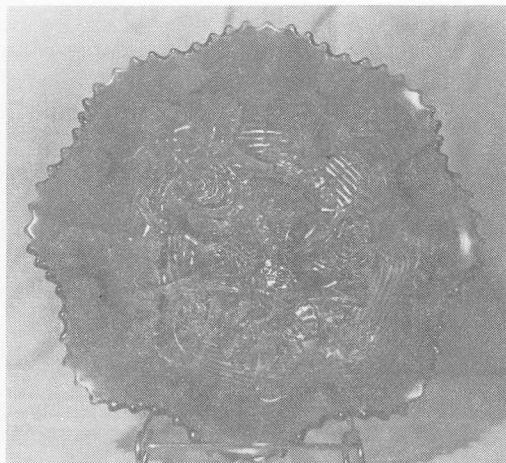
Auction - Saturday at 9:00 a.m.



LOT NO. 150



LOT NO. 55



LOT NO. 91



LOT NO. 135

LOT NO. 134

We offer a good selection of collectable and resaleable glass at auction to the highest bidder. The items come from the collection of Mr. and Mrs. Rod Sutfin from Michigan. They have been active collectors for a number of recent years and have acquired a nice selection including some good white and Fenton Open Edge Baskets.

The Econo Lodge (formerly Holiday Inn) of New Philadelphia, Ohio will host the event. There will be a Friday night preview as well as Saturday morning. You may call the motel direct for reservations at (216) 339-7731. A good way to spend a few hours on a Saturday - stop by - hope to see you there.

---

**SPECIAL NOTE - Because of the late printing of the brochure, bids will be taken over the phone from our known customers. Call business residence through Wednesday, May 28th - call the motel after Thursday afternoon, May 29th.**

Mail bids honored under the following conditions:

1. 100% deposit required on total number of pieces bid on.
2. Items are bid on in perfect condition with average and above average iridescence OR as listed in the brochure. Bids will not be carried out when damage on an item has been found during the auction.
3. Successful bidders will be notified by Collect Call from the auctioneer (so be sure to include phone number) or you may call on your own accord starting Tuesday.
4. Phone inquiries about the glass or any other questions are welcomed, but no bids will be taken over the phone - we must have a mail bid to carry out your bid.
5. All non-successful bids will receive their checks plus a result summary in the mail. Results of all bids will be provided.
6. If you have some other person at the auction bidding for you, they must pay for the item before taking it.
7. Mail bids are due by Thursday, May 29, 1986.

Send Mail Bids To:

Tom Burns Auction Service  
109 East Steuben Street  
Bath, New York 14810

If we can be of any assistance or for further information of this or future auctions, contact:

#### BURNS AUCTION SERVICE

TOM BURNS, AUCTIONEER  
109 East Steuben Street  
Bath, New York 14810  
(607) 776-7942

BILL RICHARDS, AUCTIONEER  
44 Water Street  
Poland, Ohio 44514  
(216) 757-2001

Licensed and Bonded by the Department of Commerce  
in favor of the State of Ohio

- 
- |   |   |
|---|---|
| _____ 1. Fenton 7½" Vintage Grape Ruffled Bowl - Amy.               | _____ 15. Flute Toothpick Holder - Pur.   |
| _____ 2. (2) Imperial Nu-Art Shades - Mari. (to be sold separately) | _____ 16. "Texas Loop" Sugar and Creamer - Amy. (could be newer)                    |
| _____ 3. Carnival Beads - Pur.                                      | _____ 17. M'burg 7" Blackberry Wreath Ruffled Bowl - Mari.                          |
| _____ 4. (6) N Acorn Burr Punch Cups - Mari.                        | _____ 18. M'burg Blackberry Wreath Deep Round Bowl - Mari.                          |
| _____ 5. Orange Tree Punch Cup - Mari.                              | _____ 19. M'burg 5" Blackberry Wreath Ruffled Bowl - Mari. (satiny irid.)           |
| _____ 6. N Memphis Punch Cup - Pur.                                 | _____ 20. M'burg Hanging Cherry Large Ice Cream Bowl - Green (scarce; satiny irid.) |
| _____ 7. 1909 Louisville Shriner Champagne - Clear                  | _____ 21. M'burg 9" Blackberry Wreath Ruffled Bowl - Amy.                           |
| _____ 8. 1910 New Orleans Shriner Champagne - Clear                 | _____ 22. M'burg 7" Blackberry Wreath Ruffled Bowl - Amy. (radium irid.)            |
| _____ 9. 5" Panther Ruffled Sauce - Mari.                           | _____ 23. M'burg 7" Blackberry Wreath Ruffled Bowl - Mari. (radium irid.)           |
| _____ 10. (2) 5" Panther Round Sauce - Mari.                        |   |
| _____ 11. Split Diamond Small Creamer - Mari.                       |   |
| _____ 12. 6" Persian Medallion Plate - Mari.                        |   |
| _____ 13. Fenton Blackberry Spray Ruffled Hat - Mari.               |   |
| _____ 14. Holly Ruffled Bowl - Mari.                                |   |

- \_\_\_\_\_ 24. M'burg 9" Blackberry Wreath Deep Ruffled Bowl - Amy. (satiny irid.)
- \_\_\_\_\_ 25. **M'BURG 10" GRAPE WREATH TIGHT RUFFLED EDGE BOWL - MARI. (RARE PATTERN; HAS RADIUM IRID.)**
- \_\_\_\_\_ 26. (2) M'burg 5" Blackberry Wreath Sauces - Mari.
- \_\_\_\_\_ 27. M'burg 8" Blackberry Wreath Round Bowl - Green
- \_\_\_\_\_ 28. N Fine Cut & Roses Ftd. Candy Dish - Ice Blue (feet rough)
- \_\_\_\_\_ 29. N 10" Fruit & Flowers Ruffled Bowl - Mari. (nice irid.)
- \_\_\_\_\_ 30. Fenton Holly Ruffled Compote - Blue (silvery)
- \_\_\_\_\_ 31. Fenton G&C Ruffled Bowl - Mari.
- \_\_\_\_\_ 32. 8" Fenton Leaf Chain Plate - Mari.
- \_\_\_\_\_ 33. 6" Persian Medallion Plate - Mari.
- \_\_\_\_\_ 34. Persian Medallion Hair Receiver - Mari.
- \_\_\_\_\_ 35. **FENTON HOLLY HAT - RED (GOOD DARK RED; RARE)**
- \_\_\_\_\_ 36. Fenton Waterlily & Cattail Whimsey Toothpick - Mari. (scarce)
- \_\_\_\_\_ 37. Dugan Peach & Pears Brides Basket - Mari. (bowl in metal holder frame)
- \_\_\_\_\_ 38. Fenton Peacock & Dahlia Ruffled Bowl - Mari.
- \_\_\_\_\_ 39. Fenton 7½ Acorn Ruffled Bowl - Mari./Vas. (scarce color)
- \_\_\_\_\_ 40. **N PEACOCKS PLATE - ICE GREEN (SCARCE W/GOOD COLOR)**
- \_\_\_\_\_ 41. **N PEACOCKS PLATE W/PLAIN EXTERIOR - WHITE (SCARCE W/GOOD COLOR)**
- \_\_\_\_\_ 42. 9" Orange Tree Plate w/Trunk - White (scarce; good color)
- \_\_\_\_\_ 43. 9" Leaf Chain Plate - White (scarce)
- \_\_\_\_\_ 44. Fenton 9" Peacock at the Urn - White (scarce; a very nice example)
- \_\_\_\_\_ 45. **WINE & ROSES WATER PITCHER - MARI. (SCARCE PATTERN; VERY GOOD IRID.)**
- \_\_\_\_\_ 46. Wine & Roses Wine - Mari.
- \_\_\_\_\_ 47. Imperial Diamond & Sunburst Wine - Pur.
- \_\_\_\_\_ 48. Imperial Octagon 7 pc. Wine Set - Mari. (w/stopper)
- \_\_\_\_\_ 49. Imperial Octagon Wine - Mari.
- \_\_\_\_\_ 50. Wine & Roses Wine - Mari.
- \_\_\_\_\_ 51. (3) Golden Harvest Wines - Mari. (to be sold separately)
- \_\_\_\_\_ 52. Golden Harvest Wine - Amy.
- \_\_\_\_\_ 53. (3) Sailboat Wines - Mari. (to be sold separately)
- \_\_\_\_\_ 54. Sailboat Wine - Blue (scarce)
- \_\_\_\_\_ 55. **WESTMORELAND CHECKERBOARD GOBLET - AMY. (RARE AND DESIRABLE)**
- \_\_\_\_\_ 56. Diamond & Sunburst Wine - Mari.
- \_\_\_\_\_ 57. (4) Imperial Grape Wines - Mari. (to be sold separately)
- \_\_\_\_\_ 58. Imperial Grape Wine - Pur.
- \_\_\_\_\_ 59. (2) Imperial Grape Wines - Green
- \_\_\_\_\_ 60. Imperial Grape Wine - Smoke (old?)
- \_\_\_\_\_ 61. (2) Imperial Grape Goblets - Pur. (scarce)
- \_\_\_\_\_ 62. Imperial Grape Goblet - Smoke (scarce)
- \_\_\_\_\_ 63. Imperial Grape Goblet - Green (helios)
- \_\_\_\_\_ 64. Imperial Grape Goblet - Lt. Mari.
- \_\_\_\_\_ 65. Imperial Grape Water Carafe - Pur. (tiny open bubble inside)
- \_\_\_\_\_ 66. 8" Imperial Heavy Grape Plate - Pur.
- \_\_\_\_\_ 67. 8" Imperial Heavy Grape Plate - Amber (scarce)
- \_\_\_\_\_ 68. 8" Imperial Heavy Grape Plate - Smoke (scarce color)
- \_\_\_\_\_ 69. Orange Tree Goblet - Lt. Mari.
- \_\_\_\_\_ 70. Orange Tree Goblet - Vas./Mari. (scarce)
- \_\_\_\_\_ 71. (2) Orange Tree Goblets - Blue
- \_\_\_\_\_ 72. (2) Orange Tree Goblets - Mari.
- \_\_\_\_\_ 73. Leaf Rays Nappy - White
- \_\_\_\_\_ 74. 6" Fishscale & Beads Plate - White
- \_\_\_\_\_ 75. N Nippon Ruffled Bowl - Mari. (scarce)
- \_\_\_\_\_ 76. Pond Lily Bon Bon - White
- \_\_\_\_\_ 77. N Diamond Point Swung Vase - White (scarce)
- \_\_\_\_\_ 78. N Drapery Tri Cornered Candy Dish - White (scarce)
- \_\_\_\_\_ 79. **N HEART & FLOWERS RUFFLED BOWL - WHITE (SCARCE AND NICE)**
- \_\_\_\_\_ 80. **N HEART & FLOWERS RUFFLED BOWL - ICE BLUE (SCARCE AND NICE)**
- \_\_\_\_\_ 81. Fenton Orange Tree Plate - White
- \_\_\_\_\_ 82. Pulled Loop Vase - Amy.
- \_\_\_\_\_ 83. Jenkins Cut Flowers Vase - Lt. Mari. (scarce)
- \_\_\_\_\_ 84. Grape Delight Nut Bowl - Amy.
- \_\_\_\_\_ 85. 7 pc. Dugan Cherry Berry Set - P. Opal. (scarce set; has chip on base of master bowl)
- \_\_\_\_\_ 86. Cherry Wreath Master Berry Bowl - Pur.
- \_\_\_\_\_ 87. N Three Fruits Ftd. Bowl - Amy.
- \_\_\_\_\_ 88. N Strawberry Ruffled Bowl - Mari.
- \_\_\_\_\_ 89. N Good Luck Ruffled Bowl - Mari.
- \_\_\_\_\_ 90. **ROSE SHOW RUFFLED BOWL - MARI.**
- \_\_\_\_\_ 91. **ROSE SHOW VARIANT RUFFLED BOWL - MARI. (SCARCE AND DESIRABLE PATTERN)**
- \_\_\_\_\_ 92. 7" Fenton Peacock & Dahlia Ruffled Bowl - Mari./Aqua (scarce color)
- \_\_\_\_\_ 93. 9" Fenton Peacock at the Urn Ruffled Bowl - Blue
- \_\_\_\_\_ 94. Stag & Holly Spatula Ftd. Ice Cream Shaped Bowl - Mari.
- \_\_\_\_\_ 95. **FENTON TWO ROW OPEN EDGE BASKETWEAVE RUFFLED HAT - RED (RARE)**
- \_\_\_\_\_ 96. **FENTON TWO ROW OPEN EDGE BASKETWEAVE - UP ON TWO SIDES - RED (RARE)**
- \_\_\_\_\_ 97. **FENTON TWO ROW OPEN EDGE BASKETWEAVE - UP ON TWO SIDES - RED (RARE)**
- \_\_\_\_\_ 98. Fenton Two Row Open Edge Basketweave Ruffled Hat - Ice Green (very scarce and nice)
- \_\_\_\_\_ 99. Fenton Two Row Open Edge Basketweave Ruffled Hat - Aqua (scarce)
- \_\_\_\_\_ 100. Fenton Two Row Open Edge Basketweave Ruffled Hat - Lt. Blue/Mari.
- \_\_\_\_\_ 101. Fenton Two Row Open Edge Basketweave Ruffled Hat - Blue (large size mold; scarce)
- \_\_\_\_\_ 102. **FENTON TWO ROW OPEN EDGE BASKETWEAVE - TWO SIDES UP - GREEN (VERY RARE COLOR)**
- \_\_\_\_\_ 103. Fenton Two Row Open Edge Basketweave - Two Sides Up - Blue

- \_\_\_\_\_104. Fenton Two Row Open Edge Basketweave - Two Sides Up - Mari.
- \_\_\_\_\_105. **FENTON TWO ROW OPEN EDGE BASKETWEAVE - JACK-IN-THE-PULPIT - AMY. (VERY SCARCE COLOR)**
- \_\_\_\_\_106. Fenton Two Row Open Edge Basketweave Hat - Jack-in-the-Pulpit - Mari.
- \_\_\_\_\_107. Fenton Two Row Open Edge Basketweave Hat - Square Shape - White (scarce)
- \_\_\_\_\_108. **FENTON TWO ROW BLACKBERRY RUFFLED HAT - AMY. (RARE COLOR AND QUITE DESIRABLE)**
- \_\_\_\_\_109. **FENTON TWO ROW BLACKBERRY RUFFLED HAT - AQUA (SCARCE COLOR AND NICE)**
- \_\_\_\_\_110. Fenton Two Row Blackberry Ruffled Hat - Lt. Mari.
- \_\_\_\_\_111. **FENTON TWO ROW BLACKBERRY HAT - 2 SIDES UP - WHITE (SCARCE AND NICE)**
- \_\_\_\_\_112. Fenton Two Row Blackberry Hat - 2 Sides Up - Red (nice; small chip on base [pinhead])
- \_\_\_\_\_113. Fenton Two Row Blackberry Hat - 2 Sides Up - Blue
- \_\_\_\_\_114. Fenton Two Row Blackberry Hat - 2 Sides Up - Dk. Mari.
- \_\_\_\_\_115. Fenton Two Row Blackberry Deep Ruffled Hat - Blue
- \_\_\_\_\_116. Crab Claw Water Pitcher - Mari. (very scarce pattern)
- \_\_\_\_\_117. Crab Claw Tumbler - Mari.
- \_\_\_\_\_118. Stork & Rushes Tumbler - Mari.
- \_\_\_\_\_119. Fenton Pond Lily (Lotus & Poinsettia) Ftd. Sauce - Mari.
- \_\_\_\_\_120. Stream of Hearts Compote - Mari. (scarce)
- \_\_\_\_\_121. Fenton Heart & Vine Ruffled Bowl - Amy.
- \_\_\_\_\_122. 5" Dugan Ski Star Sauce - Dk. Amy. (scarce; silvery)
- \_\_\_\_\_123. Dugan Nautilus Novelty - Lt. P. Opal. (scarce; small chip on base)
- \_\_\_\_\_124. Dugan Fan Ftd. Gravy Boat - P. Opal.
- \_\_\_\_\_125. **DUGAN APPLE BLOSSOM TWIG FLAT PLATE - P. OPAL. (RARE AND DESIRABLE; HAS BASKETWEAVE EXTERIOR)**
- \_\_\_\_\_126. 7" N G&C Handgrip Plate - Green (scarce)
- \_\_\_\_\_127. 9" N Good Luck Plate - Pur. (gold/silver irid.; scarce)
- \_\_\_\_\_128. 9" N Three Fruits Plate - Amy. (plain back)
- \_\_\_\_\_129. 9" Holly Plate - Clam.
- \_\_\_\_\_130. **10" IMPERIAL HEAVY GRAPE CHOP PLATE - WHITE (VERY RARE AND PERFECT; HAS STRETCH EFFECT)**
- \_\_\_\_\_131. N Raspberry Milk Pitcher - Amy.
- \_\_\_\_\_132. N Raspberry Milk Pitcher - Dk. Mari.
- \_\_\_\_\_133. N Raspberry Milk Pitcher - Lt. Mari.
- \_\_\_\_\_134. **IMPERIAL POINSETTIA MILK PITCHER - SMOKE(VERY SCARCE COLOR AND QUITE COLLECTABLE)**
- \_\_\_\_\_135. **IMPERIAL WINDMILL MILK PITCHER - SMOKE (VERY SCARCE COLOR AND QUITE COLLECTABLE)**
- \_\_\_\_\_136. Golden Harvest Wine Stopper Only - Mari. (tough if you need one)
- \_\_\_\_\_137. Imperial Grape Decanter Bottom Only - Mari.
- \_\_\_\_\_138. Fenton Floral & Grape Water Pitcher - Amy. (rare and nice color; has small chip on lip)
- \_\_\_\_\_139. Fenton Floral & Grape Tumbler - Amy.
- \_\_\_\_\_140. **N DAISY & DRAPERY FTD. VASE - WHITE (SCARCE AND DESIRABLE)**
- \_\_\_\_\_141. Fenton Peacock at the Urn Compote - White (scarce)
- \_\_\_\_\_142. N Fern/Draisy & Plume Exterior Compote - Green (scarce)
- \_\_\_\_\_143. Imperial Grape Compote - Mari.
- \_\_\_\_\_144. Fenton Diamond Rib Vase - Green
- \_\_\_\_\_145. Persian Garden Fruit Bowl Base Only - Amy.
- \_\_\_\_\_146. N Bushel Basket - Aqua Opal. (chipped on handle; rare)
- \_\_\_\_\_147. **7" HORSEHEAD MEDALLION PLATE - MARI. (VERY GOOD COLOR AND DETAIL)**
- \_\_\_\_\_148. N 9" Strawberry Plate w/Basketweave - Mari.
- \_\_\_\_\_149. Stippled Petals Domed Banana Shape Bowl - P. Opal. (flaked on base)
- \_\_\_\_\_150. **KITTENS CUP AND SAUCER - DK. MARI.**
- \_\_\_\_\_151. 7" Four Flower Variet Ruffled Bowl - Emerald Green (very unusual size for this pattern; has small chip on edge)
- \_\_\_\_\_152. **9" FOUR FLOWER VARIET RUFFLED BOWL - OLIVE GREEN/BROWN (SLAG; VERY, VERY UNUSUAL COLOR COMBINATION)**
- \_\_\_\_\_153. Imperial Stretch 12" Chop Plate - Pur. (unusual and super color)
- \_\_\_\_\_154. Signed Imperial Jewels Ruffled Vase - Amber
- \_\_\_\_\_155. Signed Imperial Jewels Ruffled Vase - Mari.
- \_\_\_\_\_156. Fenton Peacock at the Urn Ice Cream Shaped Bowl - Dk. Mari. (good irid.)
- \_\_\_\_\_157. Fenton G&C Ftd. Fruit Bowl w/Persian Medallion Interior - Mari.
- \_\_\_\_\_158. Dugan Grape Arbor Large Round Fruit Bowl - Mari.
- \_\_\_\_\_159. Dugan Grape Arbor Large Round Fruit Bowl - Mari.
- \_\_\_\_\_160. **LARGE STAG & HOLLY DEEP BALL FTD. BOWL - DEEP PUR. (RARE COLOR AND SCARCE SHAPE; A NICE ITEM)**
- \_\_\_\_\_161. Large Stag & Holly Round Ball Ftd. Bowl - Mari.
- \_\_\_\_\_162. Stag & Holly Spatula Ftd. Bowl - Blue (silvery irid.)
- \_\_\_\_\_163. 8" Peacock & Grape Ruffled Bowl - Mari.
- \_\_\_\_\_164. 8" Persian Medallion Ruffled Bowl - Mari.
- \_\_\_\_\_165. Persian Garden Large Ice Cream Bowl - White (nice irid.)
- \_\_\_\_\_166. Imperial Robin Water Pitcher - Mari. (scarce)
- \_\_\_\_\_167. Imperial Robin Tumbler - Mari.
- \_\_\_\_\_168. Fenton Thistle Bowl w/Pie Crust Edge - Blue
- \_\_\_\_\_169. 5" Fenton Vintage Round Sauce - Blue
- \_\_\_\_\_170. 5" Peacock Tail Ruffled Hat - Blue (silvery)
- \_\_\_\_\_171. 8½" Fenton Captive Rose Bowl w/Candy Ribbon Edge - Green



- \_\_\_\_\_ 172. 8½" Fenton Captive Rose Bowl w/Candy Ribbon Edge - Amy. (super irid.)
- \_\_\_\_\_ 173. 8½" Fenton Thistle Bowl - Green
- \_\_\_\_\_ 174. Dugan Apple Blossom Bowl - Mari.
- \_\_\_\_\_ 175. **PERSIAN MEDALLION SMALL SIZE COMPOTE - AMY. (SCARCE)**
- \_\_\_\_\_ 176. Persian Medallion Larger Size Compote - Blue
- \_\_\_\_\_ 177. Persian Medallion Larger Size Compote - Mari.
- \_\_\_\_\_ 178. Fenton Peacock at the Urn Goblet Shape Compote - Mari.
- \_\_\_\_\_ 179. Westmoreland Leaf Swirl Compote - Amy.
- \_\_\_\_\_ 180. Fenton Holly Compote - Blue
- \_\_\_\_\_ 181. Large Heavy Grape Bowl - Mari.
- \_\_\_\_\_ 182. Imperial Three in One Bowl - Mari.
- \_\_\_\_\_ 183. 10" Vintage Grape Bowl w/Candy Ribbon Edge - Mari.
- \_\_\_\_\_ 184. 8" Double Stem Rose Domed Bowl - Mari.
- \_\_\_\_\_ 185. Dugan Windflower Ruffled Bowl - Mari.
- \_\_\_\_\_ 186. Imperial Bullseye & Beads Vase - Mari.
- \_\_\_\_\_ 187. (2) Holly Compotes - Blue (to be sold separately)
- \_\_\_\_\_ 188. 10" Fenton Cherry Chain (Circles) Ice Cream Bowl - Blue
- \_\_\_\_\_ 189. 5½" Persian Medallion Sauce - Green (scarce color)
- \_\_\_\_\_ 190. **BLACKBERRY MINIATURE COMPOTE - WHITE (VERY RARE AND NICE; HAS SLIGHT GROUND BASE)**
- \_\_\_\_\_ 191. **BLACKBERRY MINIATURE COMPOTE - GREEN (VERY SCARCE COLOR)**
- \_\_\_\_\_ 192. (2) Blackberry Miniature Compotes - Blue
- \_\_\_\_\_ 193. Blackberry Miniature Compote - Mari.
- \_\_\_\_\_ 194. Wide Panel Miniature Compote - Green
- \_\_\_\_\_ 195. Imperial Acanthus Bowl - Mari.
- \_\_\_\_\_ 196. Orange Tree Ftd. Fruit Bowl - Mari.
- \_\_\_\_\_ 197. Panelled Vase - Amy.
- \_\_\_\_\_ 198. Wide Panel Vase - Mari.
- \_\_\_\_\_ 199. Basketweave Small Flower Basket - Mari.
- \_\_\_\_\_ 200. Dugan Beaded Basket - Mari. (bruise on base)
- \_\_\_\_\_ 201. 7½" Fenton Acorn Bowl - Mari.
- \_\_\_\_\_ 202. Fenton Vintage Bowl - Mari.
- \_\_\_\_\_ 203. Two Flowers Ftd. Ice Cream Shape Bowl - Mari.
- \_\_\_\_\_ 204. 6" Ribbed Morning Glory Vase - Green
- \_\_\_\_\_ 205. Lotus & Grape Two Handled Bon Bon - Blue (scarce)
- \_\_\_\_\_ 206. Cherry Circles Bon Bon - Blue
- \_\_\_\_\_ 207. Cherry Circles Round Bon Bon - Mari.
- \_\_\_\_\_ 208. Persian Medallion Bon Bon - Mari.
- \_\_\_\_\_ 209. Stippled Rays Creamer - Mari.
- \_\_\_\_\_ 210. Dugan Floral & Grape 6 pc. Water Set - Mari.
- \_\_\_\_\_ 211. (2) Twig Bud Vases - Mari. (sold as pair)
- \_\_\_\_\_ 212. Imperial Windmill Round Relish - Mari.
- \_\_\_\_\_ 213. Graceful Vase - Green (cracked)
- \_\_\_\_\_ 214. Pine Cone Ruffled Sauce - Mari.
- \_\_\_\_\_ 215. Dragon & Lotus Ruffled Bowl - Mari.
- \_\_\_\_\_ 216. Orange Tree Shaving Mug - Blue
- \_\_\_\_\_ 217. Beaded Star Compote - Mari.
- \_\_\_\_\_ 218. Poinsettia Milk Pitcher - Mari. (flake on spout)
- \_\_\_\_\_ 219. 8" Leaf Chain Bowl - Mari.

- \_\_\_\_\_ 220. Robin Mug - Mari. (chipped handle)
- \_\_\_\_\_ 221. Vintage Banded Mug - Mari.
- \_\_\_\_\_ 222. N G&C Hat Shape - Pur. (chipped base)
- \_\_\_\_\_ 223. Holly Hat - Red (chipped base)

— EXTRA ITEMS —

- \_\_\_\_\_ 1. N Greek Key Ruffled Bowl - Mari.
- \_\_\_\_\_ 2. **M'BURG COUNTRY KITCHEN COVERED BUTTER DISH - MARI. (FLAKE ON RIM OF BASE; NOT BAD)**
- \_\_\_\_\_ 3. **OVER 60 PCS. OF OPALESCENT PATTERN GLASS INCLUDING BLUE OPAL. PALM BEACH MASTER BERRY BOWL AND GREEN OPAL. TOKYO WATER PITCHER PLUS MANY NOVELTIES**
- \_\_\_\_\_ 4. **N BUSHEL BASKET - AQUA OPAL. (SCARCE AND RARE)**
- \_\_\_\_\_ 5. Lily of the Valley Tumbler - Blue (rare pattern)

— PLUS OTHER PIECES NOT LISTED —



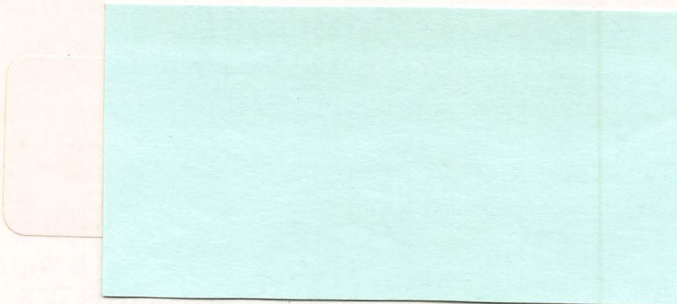
LOT NO. 45



— EXTRA ITEM —

Tokyo Water Pitcher - Green Opal.





FIRST-CLASS MAIL  
U.S. POSTAGE  
PAID  
Middleburg, Pa. 17842  
Permit No. 1

Tom Burns  
109 East Steuben Street  
Bath, N.Y. 14810  
(607) 776-7942



IMPERIAL GRAPE GOBLETS



MINIATURE BLACKBERRY COMPOTES