

LOT 14

LINCOLN-LAND CHRISTMAS PARTY AUCTION

SUNDAY, DECEMBER 8, 1985

HOLIDAY INN

Route 75 & U.S. Hwy. 51
South Beloit, Illinois

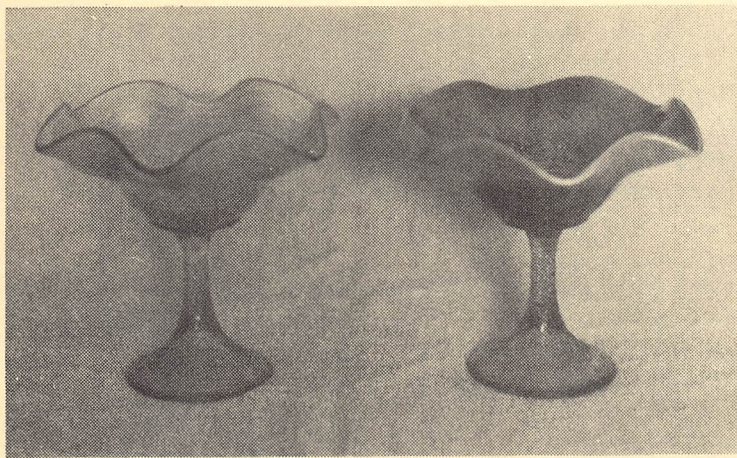
1:30 P.M.

The Lincoln-Land Carnival Glass Club is once again pleased to offer another fine selection of old carnival glass this year at its annual Christmas Party Auction. Offered will be an 80 piece combined collection from the Iowa and Wisconsin areas. We encourage you to come out on Saturday evening, December 7th, to share in the fellowship and hospitality, and to sample the Christmas cookies! Contact the Holiday Inn directly at (815) 389-3481 for reservations, and be sure to mention the Lincoln-Land Christmas Party.

For those of you who are not able to attend the party, Lincoln-Land will honor Mail Bids at this auction if they are accompanied by a 25% bid deposit. The standard write-in bid policy will apply. Send write-in bids to the Lincoln-Land Editors: Rick & Jackie Kojis, 11916 W. Lakefield Dr., West Allis, Wisconsin 53227 by Friday, December 6, 1985.

- | | |
|--|---|
| ___ 1. Marigold Leaf Chain bowl | ___ 19. Ice Green <u>N</u> Drapery vase |
| ___ 2. Marigold Hobstar humidor | ___ 20. Amethyst Msbg. Nesting Swan bowl,
radium iridescence |
| ___ 3. Marigold Octagon wine decanter | ___ 21. Green Msbg. Whirling Leaves bowl,
radium iridescence |
| ___ 4. Marigold Peacock & Urn compote | ___ 22. Marigold Poinsettia milk pitcher |
| ___ 5. Marigold Iris compote | ___ 23. Smokey Windmill milk pitcher (scarce) |
| ___ 6. Blue Knotted Beads vase | ___ 24. Purple Lustre Rose creamer, super |
| ___ 7. Blue Butterfly & Berry vase (scarce) | ___ 25. <i>BLUE KITTENS TOOTHPICK (cracked)</i> |
| ___ 8. Blue Floral & Grape tumblers, five | ___ 26. Marigold Water Lily & Cattails
whimsey |
| ___ 9. Blue Rambler Rose tumbler (scarce) | ___ 27. <i>PURPLE DUGAN MANY FRUITS RUFFLED
PUNCH BOWL AND BASE (bowl has a
couple of small flakes)</i> |
| ___ 10. Blue Orange Tree shaving mug | ___ 28. Marigold G&C centerpiece bowl (scarce) |
| ___ 11. Marigold Orange Tree shaving mug | ___ 29. Green G&C small size fruit bowl |
| ___ 12. Marigold Vintage Banded mug | ___ 30. Green G&C with thumbprints master
berry bowl, beautiful color |
| ___ 13. Marigold Robin mug | ___ 31. <i>GREEN G&C CUP & SAUCER (rare set
in green)</i> |
| ___ 14. <i>PEARLIZED CUSTARD N SHASTA DAISY 9"
ICE CREAM SHAPE BOWL (Terribly, ex-
tremely rare. Beautiful pastel iri-
descence with gold trim. First time
ever offered at auction!)</i> | ___ 32. Peach Opal Coin Spot compote |
| ___ 15. <i>PASTEL LEMON YELLOW FOUR FLOWERS
VARIANT 9" SHALLOW BOWL (rare color)</i> | ___ 33. Peach Opal Caroline candy ribbon
edge bowl |
| ___ 16. <i>RED BASKETWEAVE OPEN EDGE BASKET</i> | ___ 34. Peach Opal Question Marks bon bon |
| ___ 17. Red Fine Rib vase | |
| ___ 18. White <u>N</u> Diamond Point vase (scarce) | |

- ___ 35. Peach Opal Petal & Fan berry dishes, one 6-ruffled and one 8-ruffled
- ___ 36. Peach Opal Stippled Flowers 8" crimped edge plate
- ___ 37. *MOONSTONE WESTMORELAND DAISY WREATH BOWL, opaque base glass with pastel marigold iridescence, very pretty*
- ___ 38. Marigold Illusion bon bon (scarce pattern)
- ___ 39. Ice Blue Brocaded Acorns bon bon
- ___ 40. Marigold N Fruits & Flowers bon bon
- ___ 41. Amber Open Rose 8" bowl
- ___ 42. *AMBER OPEN ROSE 9" PLATE*
- ___ 43. Marigold Wishbone ftd. bowl, super
- ___ 44. *AMETHYST WISHBONE FTD. PLATE, rare*
- ___ 45. Clambroth Frosted Block 9" plate, marked MADE IN U.S.A.
- ___ 46. Purple Diamond Lace pitcher



LOTS 47 & 48

- ___ 47. *WHITE HEARTS & FLOWERS COMPOTE*
- ___ 48. *AQUA OPAL HEARTS & FLOWERS COMPOTE*
- ___ 49. Green Scotch Thistle compote (scarce in green)
- ___ 50. Blue N Double Loop chalice
- ___ 51. Amethyst Leaf Swirl compote
- ___ 52. Marigold Blackberry miniature compote
- ___ 53. Marigold on Milk Glass File & Fan compote (scarce)
- ___ 54. Marigold on Milk Glass Wide Panel chandelier shade
- ___ 55. Marigold on Milk Glass Floral & Optic ftd. rose bowl (scarce)
- ___ 56. Marigold N Bushel Basket, round
- ___ 57. Blue N Bushel Basket, round
- ___ 58. Purple N Bushel Basket, round
- ___ 59. *ICE BLUE N BUSHEL BASKET, eight sided (has hairline at base of one handle)*
- ___ 60. Black Amethyst (not carnival) N Bushel Basket, round, scarce
- ___ 61. *GREEN INVERTED FEATHER CRACKER JAR*
- ___ 62. Marigold N Singing Birds tumbler

- ___ 63. Pastel Marigold N Peacock at the Fountain tumbler
- ___ 64. Purple Maple Leaf tumblers, four
- ___ 65. Ice Blue Tumble-up
- ___ 66. Marigold Open Rose dish set in a metal basket frame, unusual
- ___ 67. Marigold Strawberry Intaglio large heavy fruit bowl
- ___ 68. White Carnival Holly bowl
- ___ 69. Purple Scroll Embossed 8" bowl
- ___ 70. Purple Dugan Bells & Beads shallow ruffled dish
- ___ 71. Purple Imperial Pansy 9" bowl
- ___ 72. Celeste Blue Swan salt
- ___ 73. Clear 1911 Shriners champagne
- ___ 74. Msbg. Crystal Hobstar & Feather stemmed sherberts, set of eight
- ___ 75. *WHITE HAMMERED BELL chandelier shade*
- ___ 76. Marigold Fenton G&C 7" card tray (rare shape), made from the 7" bowl
- ___ 77. Marigold Beaded Bullseye vase
- ___ 78. Smokey Corinth 6" vase
- ___ 79. Marigold Shell mint dish
- ___ 80. Amethyst Shell mint dish
- ___ 81. Green Shell mint dish



MERRY CHRISTMAS!