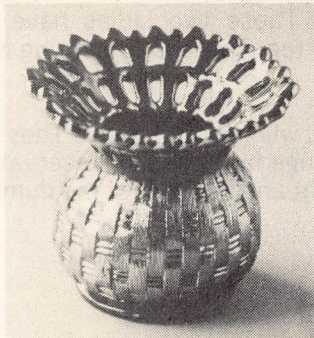


Lot #135



Lot #25



Lot #40



AUCTION SERVICE

CARNIVAL GLASS AUCTION

Saturday, August 31, 1985

Coliseum Holiday Inn

4742 Brecksville Rd.

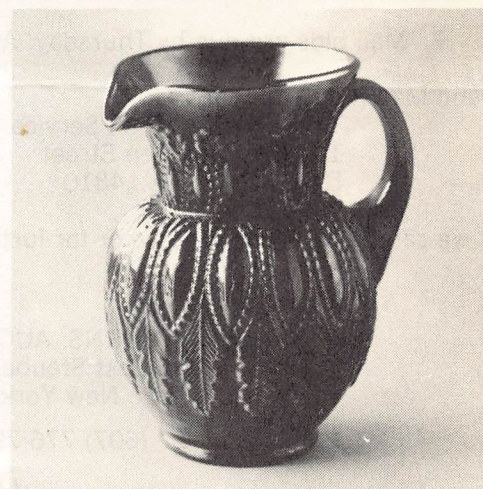
(just off exit 11 of the Ohio Turnpike)

Richfield, Ohio 44286

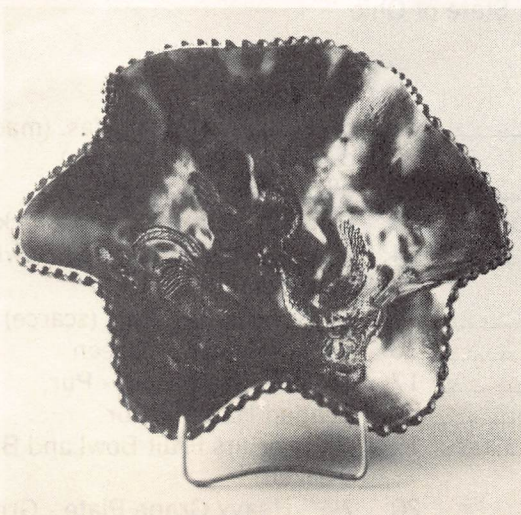
Auction - Saturday 9:00 a.m. (preview prior)



Lot #100



Lot #50



Lot #125



Lot #160

It is our pleasure to present at auction the fine collection obtained by Fern Jackson and Nell Munn from Twisp, Washington (formerly of Virginia), plus other consignments. These two ladies have been collecting for years, upgrading for quality and have ended up with a lot of cream on top. There is something for everyone. Be sure not to miss it.

The Holiday Inn of Richfield, Ohio, near the Cleveland Coliseum, will host the event. They have a really nice Holidome area (good for kids of all ages) and also nice restaurant and lounge facilities. For reservations you may call the motel direct at 216-659-6151. We will try to have a preview Friday night and because of the number of quality items offered, we advise coming early.

Mail bids honored under the following conditions:

1. 25% deposit required on total number of pieces bid on.
2. Items are bid on in perfect condition with average and above average iridescence OR as listed in the brochure. Bids will not be carried out when damage on an item has been found during the auction.
3. Successful bidders will be notified by COLLECT CALL from the auctioneer - so be sure to include phone number. Balance of payment to be sent upon notification - no items to be mailed until fully paid for; all postage and insurance is extra! Mail bids and returns to be negotiated between auctioneer and buyer, but reimbursed by consignor.
4. Phone inquiries about the glass or any other questions are welcomed, but no bids will be taken over the phone - we must have a mail bid to carry out your bid.
5. All non-successful bids will receive their deposit checks plus a result summary in the mail. Results of all bids will be provided.
6. If you have some other person at the auction bidding for you; they must pay for the item before taking it, or have a deposit from you in which case it would be treated as a normal mail bid - you would have to mail the balance before the items would be sent.
7. Mail bids are due by Thursday, August 29, 1985.

Send Mail Bids To:

Tom Burns Auction Service
109 East Steuben Street
Bath, New York 14810

If we can be of any assistance or for further information of this or future auctions, contact:

BURNS AUCTION SERVICE

TOM BURNS, AUCTIONEER
109 East Steuben Street
Bath, New York 14810
(607) 776-7942

BILL RICHARDS, AUCTIONEER
44 Water Street
Poland, Ohio 44514
(216) 757-2001

Licensed and Bonded in favor of the
Dept. of Commerce, State of Ohio

<u>10.00</u>	1. #1 Fenton Collector Plate - 1970 - Pur.	<u>10.00</u>	11. 6½" Stretch Vase - Vas. (made from a 1 lb. candy jar; top turned in)
<u>40.00</u>	2. 1981 ICGA Frolicking Bear Cuspidor Souvenir - Blue Opal.	<u>7.50</u>	12. 6" Stretch Plate - Vas.
<u>22.50</u>	3. 1982 ACGA Seacoast Cuspidor Souvenir - P. Opal.	<u>25.00</u>	13. Pair 8½" Stretch Candlesticks - Green
<u>20.00</u>	4. 1983 ACGA Seacoast Souvenir - Green	<u>22.50</u>	14. 5" x 7" Stretch Cupped Bowl and Base - Amberina
<u>25.00</u>	5. 1983 HOACGA Orange Tree Loving Cup Souvenir - P. Opal.	<u>25.00</u>	15. Scarab Hatpin - Pur. (scarce)
<u>15.00</u>	6. Pineapple Creamer - Mari.	<u>52.50</u>	16. Rooster Hatpin - Green
<u>20.00</u>	7. Stretch Cigarette Holder - Green	<u>37.50</u>	17. Bumble Bee Hatpin - Pur.
<u>85.00</u>	8. 7 PC. STRETCH LEMONADE SET - BARREL SHAPE - GREEN	<u>37.50</u>	18. Beaded Hatpin - Pur.
<u>95.00</u>	9. 7 PC. STRETCH LEMONADE SET - 9¼" TANKARD - GREEN	<u>150.00</u>	19. Many Fruits Fruit Bowl and Base - Pur. (base cracked)
<u>15.00</u>	10. Stretch Fruit Compote - Slag 5½" x 9" - Vas.	<u>37.50</u>	20. 7½" Heavy Grape Plate - Green
		<u>100</u>	21. 6½" Four Flowers Plate - P. Opal. (very scarce)

- 90 22. 7" Grapevine and Lattice Plate - Mari. w/Opal. Edge (unusual; only one I've seen)
- 150 23. Fenton Persian Medallion Stemmed Compote - Amy. (very rare color and desirable shape)
- 375 24. **FENTON BUTTERFLY AND BERRY FERNERY - BLUE (VERY RARE SHAPE; HAS VERY GOOD IRID.)**
- 3250 25. **FENTON TWO ROW OPEN EDGE BLACKBERRY SPITTOON - COBALT BLUE (ONE OF THE RAREST FENTON WHIMSEYS AND OF EXCELLENT COLOR AND IRID.)**
- 200 26. **"ABSENTEE GRAPE" AND LOTUS 8½" RUFFLED BOWL - BLUE (A ONE OF A KIND FENTON RARITY; IS CRACKED ACROSS BOTTOM; REFERENCE BRITT ARTICLE 7-84)**
- 15 27. Octagon 7 pc. Water Set - Mari.
- 25 28. Octagon 4 pc. Table Set - Mari.
- 180 29. Imperial 7 pc. Zippered Heart Berry Set - Pur.
- 210 30. Fenton Diamond and Rib Jardinere - 6½" x 6½" - Mari. (very scarce and desirable item; not many sold lately)
- 400 31. Imperial NuArt Homestead Chop Plate - Pur. (rare item w/very good irid.)
- 15 32. Imperial NuArt Homestead Chop Plate - Clam (rare; hard color to find)
- 160 33. Imperial Heavy Grape Chop Plate - Amber (scarce; has nice color)
- 175 34. Imperial Heavy Grape Chop Plate - Pur. (very nice and desirable)
- 110 35. Bo-Peep Plate (or Cereal Bowl) - Mari. (very rare item; has some minor roughness)
- 395 36. N Peacocks Plate - Amy. (scarce and desirable)
- 600 37. N Peacocks Plate - Dark Green (rare color)
- 280 38. N Peacocks Plate - White (scarce)
39. Ribbon Tie Ruffled Plate - Mari.
- 1100 40. **THE BUTTERFLY TUMBLER - OLIVE GREEN SMOKE (TERRIBLY, EXTREMELY RARE; ONE OF THE TOP TUMBLER RARITIES)**
- 25.50 41. Knotted Beads Vase - Mari.
- 15.00 42. 6¾" Pulled Morning Glory Vase - Mari.
- 57.50 43. 6¾" Smooth Panel Vase - P. Opal.
- 45 44. Pair N Feather Vases - Green
- 250 45. **PALM BEACH WATER PITCHER - WHITE (VERY RARE COLOR; QUITE DESIRABLE)**
- 120 ea 46. **(4) PALM BEACH TUMBLERS - WHITE (SCARCE; TO BE SOLD SEPARATELY)**
- 70 47. Floral and Grape Pitcher with (4) Tumblers - Amy.
- 65 48. Fenton Open Edge Basket - Card Tray Shape - Vas.
- 15 49. Cambridge Small Buzz Saw Cruet - No Stopper - Green
- 3200 50. **M'BURG PERFECTION WATER PITCHER - AMY. (FLARED TOP WITH BEAUTIFUL RADIUM IRID.; VERY RARE AND DESIRABLE)**
- 220 51. **M'BURG PERFECTION TUMBLER - AMY. (VERY RARE)**
- 650 52. **M'BURG HOBNAIL ROSE BOWL - GREEN (VERY RARE COLOR; NICE)**
- 700 53. **1914 PARKERSBURG ELK PLATE - BLUE (VERY RARE PIECE)**
- 1000 54. **M'BURG 1910 DETROIT ELKS BOWL - AMY. (VERY RARE AND DESIRABLE)**
- 425 55. **M'BURG LETTERED COURTHOUSE ICE CREAM SHAPE BOWL - AMY. (SCARCE PATTERN; SCARCE SHAPE)**
- 1250 56. **M'BURG MARILYN 7 PC. WATER SET - AMY. (VERY, VERY RARE SET; GOOD COLOR AND IRID.)**
- 500 57. N Singing Bird 7 pc. Water Set - Green (scarce set)
- 700 58. **N ACORN BURR 7 PC. WATER SET - GREEN (VERY RARE SET)**
- 425 59. Diamond Lace 7 pc. Water Set - Pur.
- 500 60. **N EMBROIDERED MUMS PLATE - WHITE (VERY RARE COLOR OF A DESIRABLE PATTERN)**
- 225 61. Fenton Grape and Cable Ruffled Ftd. Fruit Bowl/Persian Medallion Int. - Celeste Blue (odd color; not true celeste)
- 45 62. N Grape and Cable Tumbler - Amy.
- 55 63. N 7½" Grape and Cable Handgrip Plate - Mari.
- 105 64. N 6" Grape and Cable Card Tray (6" plate turned up 2 sides) - Amy.
- 250 65. **N GRAPE AND CABLE HATPIN HOLDER WITH ORIGINAL NORTHWOOD LABEL - DATED 4-30-11 -PUR. (VERY SIGNIFICANT RARITY)**
- 200 66. **N GRAPE AND CABLE HATPIN HOLDER WITH ORIGINAL NORTHWOOD LABEL - NO DATE - PUR. (VERY SIGNIFICANT RARITY)**
- 175 67. N Grape and Cable Large Dresser Tray - Pur.
- 170 68. N Grape and Cable Small Pin Tray - Pur.
- 95 69. N Grape and Cable Punch Cup Nappy (pin tray) - Pur.
- 520 70. **N GRAPE AND CABLE PERFUME BOTTLE AND STOPPER - PUR. (RARE AND DESIRABLE)**
- 190 71. N Grape and Cable Cologne Bottle and Stopper - Pur.
- 95 72. N Grape and Cable Covered Powder Jar - Pur. *dam*
- 200 73. (2) N Grape and Cable Candlesticks - Pur. (sold by each, take pair)
- 150 74. N Grape and Cable Sweetmeat Covered Compote - Lav. (very scarce color; nice) *dam*
- 2200 75. **N GRAPE AND CABLE 7 PC. WHISKEY DECANTER SET - PUR. (VERY RARE SET AND VERY WELL MATCHED; VERY FINE EXAMPLE)**
- 50 76. Singing Bird Mug - Blue
- 300 77. Singing Bird Mug - Dk. Mari.
- 42.50 78. 6" Persian Medallion Plate - Clam
- 120 79. 10" Imperial Acanthus Plate - Mari.
- 700 80. **FENTON 1914 PARKERSBURG ELK PLATE - BLUE (VERY RARE AND DESIRABLE)**

- ~ 600
- 4600 81. FENTON ILLINOIS SOLDIERS AND SAILORS PLATE - MARI. (VERY RARE AND DESIRABLE)
- 300.00 82. ROSE SHOW PLATE - WHITE
- 140 83. Orange Tree Plate - White
- 275 84. N G&C Ftd. Plate - Ice Green (small chip on 1 foot; very rare)
- 750 ~~125~~ 85. N GRAPE ARBOR TANKARD WATER PITCHER - WHITE (DESIRABLE PATTERN AND SCARCE COLOR)
- 90 ~~200~~ 86. (6) N Grape Arbor Tumblers - White
- N.S. 87. N GRAPE ARBOR TANKARD WATER PITCHER - AMY. (SCARCE; HAS NICE BRONZE IRID.)
- 55.00 88. (2) N Grape Arbor Tumblers - Amy. (chipped)
- 140 89. 5" Cherries Plate - Pie Crust Edge - Amy. (flattened berry bowl)
- 625 90. N IVY TOWN PUMP - PUR. (RARE AND DESIRABLE)
- 85 91. Fenton Apple Tree Pitcher - Mari. (crack by handle)
- 40 92. Fenton Apple Tree Tumbler - Mari.
- 40 93. Westmoreland Leaf Swirl Compote - Amy.
- 105 94. Westmoreland Leaf Swirl Compote - Yellow (scarce color)
- 205 95. N NEARCUT GOBLET - PUR. (VERY SCARCE ITEM; AN UNDERATED ITEM)
- 80 96. WESTMORELAND CHECKERBOARD GOBLET - AMY. (SCARCE ITEM)
- 395 97. N DANDELION MUG - AQUA OPAL. (RARE AND DESIRABLE)
- 250 98. 6" N FERN BRAND ADVERTISING PLATE - AMY.
- 950 99. 9" ORANGE TREE PLATE - GREEN (VERY RARE COLOR; AN EXCELLENT EXAMPLE)
- 2000 100. CHRISTMAS COMPOTE - PUR. (VERY RARE; ONE OF THE BETTER EXAMPLES KNOWN)
- 200 101. HONEYCOMB ROSE BOWL - P. OPAL. (SCARCE)
- 45 102. 5" Morning Glory Vase - Smoke
- 25 103. 5" Morning Glory Vase - Mari.
- 130 104. Flute and Cane Small Tankard - Mari.
- 325 105. N GREEK KEY WATER PITCHER - MARI. (VERY SCARCE; DESIRABLE)
- 120 ~~200~~ 106. (4) N Greek Key Tumblers - Mari. (scarce; to be sold separately)
- 45 107. 474 Tumbler - Mari.
- 7.50 108. Orange Tree Orchard Tumbler - Blue
- 55 109. Heavy Iris Tumbler - Amy. (satiny)
- 30 110. Diamond Tumbler - Amy. (radium)
- 35 111. Vineyard Tumbler - Pur.
- 25 112. Maple Leaf Tumbler - Dk. Mari. (turned in top)
- 80 113. JEWELLED HEART TUMBLER - DK. MARI.
- 25 114. Floral and Grape Tumbler - Blue
- 370 115. Star and File 8 pc. Wine Set - Mari. (scarce set)
- 1200 116. N DANDELION TANKARD WATER PITCHER - ICE BLUE (VERY RARE ITEM AND SUPER; HAS SMALL FLAKE ON LIP)
- 600 117. N DANDELION TANKARD WATER PITCHER - HOREHOUND (VERY RARE W/SUPER IRID.)
- 1700 118. N RASPBERRY WATER PITCHER - ICE BLUE (VERY RARE AND DESIRABLE; HAS TINY PINHEAD ON LIP)
- 1000 119. N GRAPE ARBOR TANKARD PITCHER & TUMBLER - ICE BLUE (VERY RARE AND DESIRABLE)
- 700 120. 10½" PERSIAN GARDEN ICE CREAM BOWL - AMY. (VERY RARE SHAPE AND DESIRABLE PATTERN)
- 395 121. N Peacock on the Fence Plate - Amy. (bronze irid.)
- 290 122. Fenton 9" Peacock at the Urn Plate - Blue
- 110 123. Fenton Peacock at the Urn Compote - White
- 35 124. 7 pc. Tree Bark Water Set - Mari. (late carnival)
- 1900 125. FARMYARD SIX RUFFLED BOWL - PUR. (VERY RARE; EXCELLENT COLOR AND IRID.)
- 45 126. Rococco Vase - Mari.
- 25 127. Rococco Vase - Mari.
- 115 128. LITTLE BARREL - GREEN (RARE COLOR)
- 110 129. LITTLE BARREL - MARI. (SCARCE)
- 205 130. LITTLE BARREL - SMOKE
- 35 131. N Daisy and Drape Vase - White (chipped flange)
- 270 132. N CORN VASE - PUR. (HAS FLOWER PATTERN ON BASE)
- 165 133. N CORN VASE - WHITE (SCARCE)
- 250 134. N TORNADO VASE - MARI. (SCARCE AND DESIRABLE)
- 675 135. N TREE TRUNK 20" FUNERAL VASE - COBALT BLUE (VERY GOOD COLOR AND IRID.; RARE)
- 190 136. CORN BOTTLE - MARI. (RARE)
- 200 137. CORN BOTTLE - GREEN (RARE)
- 240 138. CORN BOTTLE - SMOKE (RARE)
- 350 139. IMPERIAL LOGANBERRY VASE - AMBER (A BEAUTIFUL EXAMPLE; SCARCE AND DESIRABLE)
- 185 140. IMPERIAL POPPY SHOW VASE - MARI.
- 210 141. DUGAN BEAUTY BUD VASE - 4½" TALL - PUR. (QUITE A RARE MINIATURE ITEM)
- 35 142. Dugan Beauty Bud Vase - 9" tall - Amy.
- 35 143. Shriners Souvenir - 1909 Louisville - Clear
- 45 144. Shriners Souvenir - 1910 New Orleans - Clear
- 900 145. HEAVY IRIS TANKARD WATER PITCHER - PUR. (A VERY DESIRABLE DUGAN ITEM)
- 180 146. (4) Heavy Iris Tumblers - Pur.
- 1750 147. STRAWBERRY SCROLL WATER PITCHER - BLUE (SUPER IRID.; AND WOULD BE A SUPER ADDITION)
- 300 148. STAG AND HOLLY FTD. CHOP PLATE - MARI. (VERY RARE; GOOD COLOR)
- 600 149. FOUR FLOWERS CHOP PLATE - PUR. (VERY RARE AND DESIRABLE)
- 375 150. WISHBONE AND SPADES CHOP PLATE - PUR. (VERY RARE AND DESIRABLE)
- 400 151. Butterfly and Berry 7 pc. Water Set - Blue (super color and irid.; a tough pitcher to find)

- 500 152. **FENTONIA WATER PITCHER - BLUE (A RARE ITEM)**
- 700 153. **FENTON FLORAL & GRAPE 7 PC. WATER SET - GREEN (A SUPER RARE COLOR; TOUGH SET)**
- 235 154. Imperial Grape Water Pitcher and 1 Tumbler - Smoke
- 325 155. **SPECTOR'S DEPT. STORE PLATE W/HEART AND VINE - MARI. (VERY SCARCE)**
- 100 156. N Stippled Three Fruits Plate - Mari.
- 290 157. N Three Fruits Plate - Green
- 130 158. N Three Fruits Plate - Pur.
- 80 159. Windflower Plate - Mari.
- 1150 160. **DUGAN BUTTERFLY AND TULIP SQUARE FTD. BOWL - PUR. (VERY GOOD IRID. AND QUITE RARE)**
- 150 161. **BARBELLA TUMBLER - VAS. (VERY RARE; FROM BLANK OF GRAPE ARBOR)**
- 50 162. Diamond Lace Tumbler - Mari. (chip; very rare color)
- 40 163. Singing Bird Tumbler - Amy.
- 50 164. Sunflower Tumbler - Amy.
- 80 165. Milady Tumbler - Mari.
- 55 166. Cosmos and Cane Tumbler - Dk. Mari.
- 17.50 167. Floral and Grape Tumbler - Blue
- 12.50 168. Bourbon Decanter - Bulbous with Stopper - Mari. (late carnival)
- 15.00 169. Captain Stype Bourbon Decanter - Mari. (late carnival)
- 25 170. (5) Bourbon Decanters - Ovals Pattern with Stopper - Mari. (late carnival; to be sold separately)

* * * 171 - 181 NOT CARNIVAL * * *

- 115 171. N Memphis 5 pc. Water Set - Crystal (gold trim; scarce)
- 60 172. N Memphis 4 pc. Table Set - Crystal (gold trim)
- 45 173. N 7 pc. Berry Set - Crystal (gold trim)
- 25 174. N Memphis Handled Nappy - Advertising Piece - Crystal
- 100 175. **N MEMPHIS 13 PC. BANQUET PUNCH BOWL SET - CRYSTAL**
- 65 176. Royal Ivy Pitcher - Circa 1889 - Crystal (satin finish body)
- 140 177. **ROYAL IVY PITCHER - CIRCA 1889 - CRYSTAL**
- 30 178. Royal Ivy Tumbler
- 60 179. 10" Apple and Pear Berry Bowl with (6) Small Bowls - Goofus
- 75 180. Dugan Jeweled Heart Pitcher - Clear Opal.
- 25 181. Dugan Jeweled Heart Tumbler - Clear Opal.
- 5 182. Pair Quilted Lamp Shades - White
- 45 183. Fenton Dragon Tooth Shade - Mari.
- 15 184. N Signed Wide Panel Shade - White
- 25 185. Shade with Nutmeg Trim - Custard (not carnival)
- 7.50 186. Apple Powder Jar - Mari. (late carnival)
- 7.50 187. 4" Liberty Bell Bank - Mari. (late carnival)
- 35.00 188. Fenton Peter Rabbit Plate - Green (cracked; not carnival)

- 12.50 189. Fenton Basket Candlestick Holder - Red
- 95 190. Imperial 6 pc. Lemonade Set with Handled Glasses - Vas. (tankard 8-5/8")
- 5 191. Pair Candlestick Drip Catchers - Vas.
- 7.50 192. 4½" Compote with Dolphin Stem - Vas. (jack-in-the-pulpit shape)
- 10 193. 6¼" x 7¾" Satin Finish Compote - Vas. (not stretch)
- 20 194. 10¼" Stretch Console Bowl - Tangerine
- 35 195. 5½" tall Fenton Melon Rib Fan Vase - Tangerine
- 10 196. 7½" Stretch Cupped In Rose Bowl - Amy. (two tiny bruises on inside)
- 25 197. 6¼" Stretch Cupped In Rose Bowl - Blue Custard
- 15 198. 4" tall x 6¾" across Stretch Compote - Yellow Opaque
- 25 199. 7¼" tall x 7¼" across Long Stemmed Compote - Celeste Blue
- 17.50 200. 8" across x 7½" tall Imperial Panelled Stretch Compote - White
- 7.50 201. Plain Covered Candy Dish (Ice Crystal Type) - White (with gold trim)
- 50 202. Daisy and Diamond Cut (Mayflower) Stemmed Compote - Mari. (has extremely minor roughness; very rare pattern)
- 5 203. Adam's Rib Stretch Two Handled Open Sugar - Ice Green
- 15 204. 4¾" Double Dolphin/Diamond Quilted Flared Compote - Green (not carnival)
- 225 205. M'burg 9¼" Grape Wreath Master Berry Bowl with Unusual Tight Crimped Edge - Green (rare shape; nice radium emerald green finish)
- 75 206. M'burg 5¼" Strawberry Wreath Sauce - Green (has unusual tight crimped edge; radium finish)
- 100 207. 10" M'burg Six Ruffled Whirling Leaves - Green (nice satin finish)
- 85 208. M'burg Hanging Cherry Covered Butter Dish - Amy. (radium finish; has a number of chips underneath edge of base)
- 110 209. M'burg Hanging Cherry Butter Cover Only - Mari.
- 115 210. M'burg Hanging Cherry Sugar Cover Only - Amy.
- 60 211. N Fruits and Flowers Master Berry Bowl - Green
- 45 212. N Poppy Relish - Blue (slight roughness)
- 45 213. Fenton Orange Tree Covered Powder Jar - Mari.
- 22.50 214. Fenton Orange Tree Powder Jar Base Only - Amy.
- 27.50 215. N Grape and Cable Powder Jar Base Only - Pur.
- 7.50 216. Imperial Optic Rose Bowl - Mari.
- 30 217. Persian Garden Fruit Bowl Base Only - Amy.
- 27.50 218. N Peacock at the Fountain Punch Base Only - Mari.
- 20 219. N Grape and Cable Punch Base Only - Pur.
- 20 220. N Grape and Cable Punch Base Only - Pur.

FIRST-CLASS MAIL
U.S. POSTAGE
PAID
Middleburg, Pa. 17842
Permit No. 1

Tom Burns
109 East Steuben Street
Bath, N.Y. 14810
(607) 776-7942

- 80 221. Orange Tree Punch Base Only - Blue (excess
flare on base)
20 222. Dahlia Butter Bottom Only - White (scarce;
has gold trim)

- 5 234. Broken Arches Punch Base Only - Lt. Mari.
(2" crack in base)
3 235. Stretch Apothecary Bottle - Ice Green
(cracked and bruised)

* * * 223 - 232 NOT CARNIVAL * * *

— ADDITIONAL ITEMS —

- WS 223. Louis XV Custard Banana Boat - Custard
35 224. Louis XV Ftd. Banana Boat - Crystal Green
w/Gold Trim
35 225. Tokyo Water Pitcher - Clear Opal.
95 226. Louis XV 4 pc. Table Set - Custard (base of
butter cracked; fair trim)
25 227. Small Size Handled Basket - Clear Opal.
12 228. Iris with Meander Swung Vase - Vas./Opal.
(small flake on base)
10 229. Bohemian Straw Jar Minus Lid - Green with
Gold
15 230. 5" tall European Art Glass Vase (resembles
stretch) - Ice Green (with enameled
decoration)
15 231. Pair Short Stretch Candlesticks - Celeste Blue
17.50 232. New Fenton Grape and Cable Cuspidor -
Aqua Opal. (from base of humidor)
17.50 233. Circle Scroll Butter Base Only - Pur. (small
chip on edge)
- 290 Good Luck Plate - Amy.
WS M'burg Feather & Heart Water Pitcher - Mari.
N Wishbone Ftd. Bowl - Ice Blue - 850
N Wishbone Ftd. Bowl - White - 425
250 M'burg Fleur d'lis Tri-Cornered Domed Ftd. Bowl w/Tight
Pie Crust Edge - Amy. w/Radium Finish
60 M'burg Primrose Ruffled Bowl - Pastel Mari.