

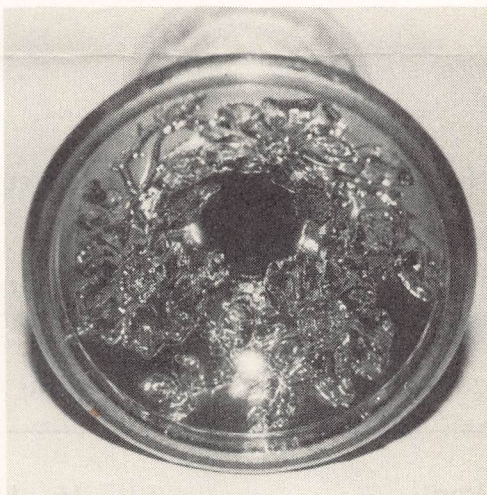
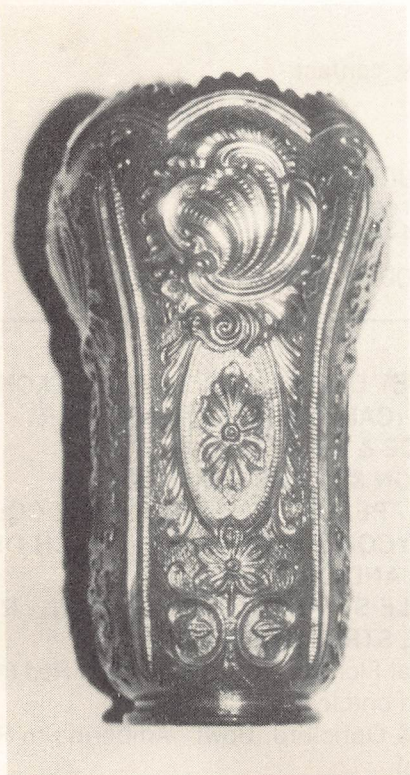
AUCTION SERVICE

KEYSTONE CARNIVAL GLASS CLUB CONVENTION AUCTION

Thursday, May 16, 1985

**Penn Harris Motor Inn
Camp Hill, Pennsylvania**

6:00 p.m. start (4:00-6:00 preview)



We at Burns Auction Service are pleased to once again perform the auction for the Keystone Carnival Glass Club Convention which will be held May 16 - 18 at the Penn Harris Motor Inn, Camp Hill, Pa.

There will be over 250 lots of glass offered from an Eastern Pennsylvania collection as well as some odd consignments. We tried hard to find a selection which was both diversified - as well as quality - hope all are satisfied.

The Penn Harris Motor Inn, hosting the event, is located on Rte. 15 South, just across the Susquehanna River from Harrisburg. You can call the motel at (717) 763-7117 for information. For further information on the convention, write: Woody Funk, 536 Hiview Dr., Lititz, PA 17543 - Phone (717) 665-2395.

Mail bids honored under the following conditions:

1. 25% deposit required on total number of pieces bid on.
2. Items are bid on in perfect condition with average and above average irridescence OR as listed in the brochure. Bids will not be carried out when damage on an item has been found during the auction.
3. Successful bidders will be notified by COLLECT CALL from the auctioneer - so be sure to include phone number. Balance of payment to be sent upon notification - no items to be mailed until fully paid for; all postage and insurance is extra! Mail bids and returns to be negotiated between auctioneer and buyer, but reimbursed by consignor.
4. Phone inquiries about the glass or any other questions are welcomed, but no bids will be taken over the phone - we must have a mail bid to carry out your bid.
5. All non-successful bids will receive their deposit checks plus a result summary in the mail. Results of all bids will be provided.
6. If you have some other person at the auction bidding for you; they must pay for the item before taking it, or have a deposit from you in which case it would be treated as a normal mail bid - you would have to mail the balance before the items would be sent.
7. Mail bids are due by Thursday, May 16, 1985.

Send Mail Bids To:

Tom Burns Auction Service
109 East Steuben Street
Bath, New York 14810

If we can be of any assistance or for further information of this or future auctions, contact:

BURNS AUCTION SERVICE

TOM BURNS, AUCTIONEER
109 East Steuben Street
Bath, New York 14810
(607) 776-7942

BILL RICHARDS, AUCTIONEER
44 Water Street
Poland, Ohio 44514
(216) 757-2001

<u>5</u>	1. Checkerboard Ashtray - Mari.	<u>225</u>	16. FISHNET ONE LILY EPERGNE - PEACH OPAL. (CANDY RIBBON EDGE; VERY SCARCE & DESIRABLE)
<u>10</u>	2. Flute Goblet - Mari.	<u>275</u>	17. DRAGON & LOTUS SPATULA FTD. BOWL - PEACH OPAL. (VERY RARE COLOR)
<u>5</u>	3. Vintage Powder Jar Base Only - Pur.	<u>140</u>	18. HONEYCOMB ROSE BOWL - PEACH OPAL. (RARE AND DESIRABLE)
<u>30</u>	4. Vintage Grape Fernery - Blue	<u>85</u>	19. DOUBLE SCROLL CONSOLE BOWL - RED (RARE, STRETCH EFFECT)
<u>45</u>	5. Propeller Compote - Green (scarce color)	<u>40</u>	20. Imperial Floral & Optic Ftd. Bowl - Red (small chip on one leg)
<u>27 1/2</u>	6. Orange Tree Goblet - Blue	<u>100</u>	21. Floral & Optic Ftd. Bowl - Amberina to Red (scarce)
<u>12 1/2</u>	7. Orange Tree Goblet - Mari.	<u>75</u>	22. Palm Beach Covered Butter Dish - Honey Amber (scarce)
<u>10</u>	8. Orange Peel Sherbert - Amy. (chipped)	<u>70</u>	23. N Peacock at the Fountain Covered Butter Dish - Pur. (nice)
<u>30</u>	9. Welch Paperweight - Pur.		
<u>25</u>	10. Wreath of Roses Rose Bowl - Mari.		
<u>290</u>	11. 8" FENTON ACORN BOWL - RED SLAG (VERY RARE COLOR AND TEXTURE; NICE)		
<u>170</u>	12. FENTON FERN PANELS HAT - RED (RARE PATTERN AND COLOR)		
<u>200</u>	13. FENTON FINE RIB VASE - RED (RARE)		
<u>17 1/2</u>	14. Vintage Band Mug - Mari.		
<u>30</u>	15. Westmoreland Estate Creamer (N.H. Town Souvenir) - Mari. (scarce color)		

<u>900</u>	104.	N TOWN PUMP - MARI. (EXT. RARE COLOR AND VERY DESIRABLE)	<u>25</u>	137.	N G&C Powder Jar with Lid - Mari. (chip on lid)
<u>160</u>	105.	Town Pump and Trough - Vas. Opal. (not Carnival; signed Northwood in script)	<u>600</u>	138.	N G&C 7 PC. TANKARD WATER SET - PUR.
<u>200</u>	106.	N Peach Covered Butter Dish - White (scarce color)	<u>N.S.</u>	139.	N G&C 7 pc. Water Set - Pur.
<u>75</u>	107.	N Peach Covered Sugar Dish - White (scarce color)	<u>70 ?</u>	140.	N G&C DRESSER SET (7 PCS.) - MARI. (NO PERFUME; TO BE SOLD SEPARATELY)
<u>220</u>	108.	N DRAPERY ROSE BOWL - AQUA OPAL. (RARE AND DESIRABLE)	<u>140</u>	141.	N G&C Butter Dish - Pur.
<u>300</u>	109.	N BEADED CABLE ROSE BOWL - AQUA OPAL. (RARE AND DESIRABLE)	<u>225</u>	142.	N G&C Covered Compote - Pur. (scarce item)
<u>220</u>	110.	N LEAF AND BEADS FTD. ROSE BOWL - AQUA OPAL. (RARE AND DESIRABLE)	<u>170</u>	143.	N G&C Cup and Saucer - Pur.
<u>450</u>	111.	DUGAN JEWEL HEART WATER PITCHER - MARI. (VERY RARE PATTERN)	<u>170</u>	144.	N G&C Cup and Saucer - Pur.
<u>185</u>	112.	N Springtime Covered Butter Dish - Mari. (scarce pattern)	<u>650</u>	145.	N G&C OPEN COMPOTE - GREEN (VERY RARE COLOR & QUITE DESIRABLE)
<u>70</u>	113.	N Springtime Covered Sugar Dish - Mari.	<u>350</u>	146.	N G&C OPEN COMPOTE - MARI. (RARE IN THIS COLOR)
<u>80</u>	114.	N Springtime Spooner - Mari.	<u>275</u>	147.	N G&C Stippled Plate - Green (scarce; nice)
<u>80</u>	115.	N Springtime Creamer - Mari.	<u>110</u>	148.	N G&C Thumbprint Master Berry Bowl - Amy.
<u>90</u>	116.	Odd Shape Kittens Toothpick Holder - Mari. (unusual)	<u>20</u>	149.	N G&C Shot Glass - Mari. (damaged)
<u>90</u>	117.	Odd Shape Kittens Sauce - Mari. (slightly up on 2 sides)	<u>260</u>	150.	Pr. N G&C Candlesticks - Pur.
<u>125</u>	118.	Kittens Cup - Mari.	<u>75</u>	151.	Pr. N G&C Candlesticks - Mari. (one chipped)
<u>500</u>	119.	DUGAN WREATH CHERRY WATER PITCHER - WHITE (RARE COLOR; DESIRABLE)	<u>65</u>	152.	N G&C Tobacco Jar - Mari. (one finger off)
<u>150</u>	120.	Fenton Vintage Grape Sm. Size Epergne - Amy. (scarce)	<u>85</u>	153.	Fenton G&C Ftd. Plate - Amy.
<u>375</u>	121.	CAROLINA DOGWOOD RUFFLED BOWL - BLUE OPAL. (EXCELLENT EXAMPLE)	<u>200</u>	154.	IMPERIAL LOGANBERRY VASE - AMBER (NICE; SCARCE COLOR)
<u>35</u>	122.	Carolina Dogwood Flat Shaped Bowl (7" x 2") - Mari. on Milk Glass (spotty irid.; scarce)	<u>150</u>	155.	Imperial Loganberry Vase - Green (scarce)
<u>55</u>	123.	Dugans Adam's Rib Cereal Bowl - Mari. on Milk Glass (very unusual item; very few known)	<u>170</u>	156.	IMPERIAL FLUTE 8 PC. PUNCH SET - PUR. (VERY RARE SET; SMALL CHIP ON BOWL; ONE CUP CRACKED)
<u>35</u>	124.	N G&C 9" Bowl - Amy.	<u>70</u>	157.	Apple Blossom Twigs Ruffled Bowl - Peach Opal.
<u>850</u>	125.	N G&C CENTERPIECE BOWL - ICE GREEN (SUPER; VERY RARE AND DESIRABLE)	<u>60</u>	158.	10" N Wishbone Bowl - Pur.
<u>450</u>	126.	N G&C CENTERPIECE BOWL - ICE BLUE (EXT. RARE AND DESIRABLE)	<u>65</u>	159.	Ruffled Rib Spittoon - Mari. (has different ruffling)
<u>450</u>	127.	N G&C CENTERPIECE BOWL - WHITE (VERY RARE COLOR)	<u>110</u>	160.	Fenton Thistle Banana Boat - Blue
<u>250</u>	128.	N G&C CENTERPIECE BOWL - POINTS STRAIGHT UP - WHITE (RARE; SCARCE SHAPE)	<u>8500</u>	161.	CAMBRIDGE INVERTED FEATHER TANKARD WATER PITCHER - MARI. (EXT. RARE; ONE OF 2 KNOWN EXAMPLES; MAY HAVE TINY NICK ON HANDLE)
<u>350</u>	129.	N G&C Centerpiece Bowl - Pur.	<u>150</u>	162.	Cambridge Inverted Strawberry Large Open Compote - Mari. (scarce)
<u>200</u>	130.	N G&C Centerpiece Bowl - Mari.	<u>850</u>	163.	FENTONIA 7 PC. WATER SET - BLUE (RARE SET)
<u>850</u>	131.	N G&C SMALL SIZE FRUIT BOWL - ICE BLUE (SUPER ITEM W/GOOD COLOR)	<u>10</u>	164.	N Leaf and Beads Ftd. Bowl - Green
<u>110</u>	132.	N G&C Small Size Fruit Bowl - Mari.	<u>20</u>	165.	Sailboats Sauce - Mari.
<u>100</u>	133.	N Fine Cut and Roses Ftd. Candy Dish - Aqua Opal. (feet chipped)	<u>120</u>	166.	Grapevine Lattice 7 pc. Tankard Water Set - Mari. (pitcher cracked)
<u>350</u>	134.	N FINE CUT AND ROSES ROSE BOWL - AQUA OPAL. (RARE; ONE FOOT SLIGHTLY SMOOTHED)	<u>575</u>	167.	N PEACOCK AT THE URN LARGE ICE CREAM BOWL - ICE BLUE (GOOD IRID.; VERY RARE AND DESIRABLE)
<u>100</u>	135.	N Fine Cut and Roses Ftd. Rose Bowl - Green (feet chipped)	<u>575</u>	168.	N PEACOCK AT THE URN LARGE ICE CREAM BOWL - ICE GREEN (GOOD IRID.; VERY RARE AND DESIRABLE)
<u>400</u>	136.	N G&C PERFUME BOTTLE WITH STOPPER - PUR. (RARE AND HAS GOOD COLOR)	<u>460</u>	169.	N PEACOCK AT THE URN LARGE ICE CREAM BOWL - WHITE (VERY RARE AND DESIRABLE)
			<u>250</u>	170.	N PEACOCK AT THE FOUNTAIN MASTER BERRY BOWL - ICE BLUE (VERY RARE AND DESIRABLE)
			<u>375</u>	171.	N PEACOCK AT THE FOUNTAIN COMPOTE - WHITE (RARE AND DESIRABLE)
			<u>575</u>	172.	N PEACOCK AT THE FOUNTAIN FTD. FRUIT BOWL - GREEN (EXTREMELY RARE COLOR; ONE OF A FEW KNOWN)

<u>80</u>	24.	N Peacock at the Fountain Covered Sugar Dish - Pur. (nice)	<u>75</u>	62.	N GREEK KEY TUMBLER - PUR. (SUPER)
<u>70</u>	25.	N Peacock at the Fountain Spooner - Pur. (nice)	<u>85</u>	63.	N Greek Key Tumbler - Mari.
<u>95</u>	26.	N Peacock at the Fountain Creamer - Pur. (nice)	<u>45</u>	64.	N Grape Arbor Tumbler - Pur.
<u>325</u>	27.	PANELLED DANDELION 7 PC. TANKARD WATER SET - AMY. (NICE; SCARCE SET)	<u>20</u>	65.	N Grape Arbor Tumbler - Mari.
<u>80</u>	28.	N Acorn Burr Covered Butter Dish - Mari.	<u>40</u>	66.	N Dandelion Tumbler - Mari.
<u>60</u>	29.	N Acorn Burr Covered Sugar Dish - Mari.	<u>95</u>	67.	N G&C Stippled Tumbler - Mari.
<u>45</u>	30.	N Acorn Burr Spooner - Mari.	<u>85</u>	68.	N Peach Tumbler - White (scarce)
<u>50</u>	31.	N Acorn Burr Creamer - Mari.	<u>32 1/2</u>	69.	N Oriental Poppy Tumbler - Pur.
<u>550</u>	32.	TEN MUMS 7 PC. TANKARD WATER SET - MARI. (SCARCE COLOR; TOUGH SET TO FIND)	<u>160</u>	70.	N WISHBONE TUMBLER - PUR. (SUPER)
<u>95</u>	33.	Imperial Octagon Table Set Creamer - Pur. (very rare color)	<u>55</u>	71.	Ten Mums Tumbler - Blue
<u>65</u>	34.	Imperial Octagon Spooner - Pur. (rare color)	<u>40</u>	72.	Lustre Rose Tumbler - Pur. (nice)
<u>70</u>	35.	Imperial Octagon Covered Butter Dish - Pur. (base cracked)	<u>55</u>	73.	TIGER LILY TUMBLER - PUR. (SUPER)
<u>25</u>	36.	Imperial Octagon Covered Sugar Dish - Pur. (minus lid; scarce)	<u>12 1/2</u>	74.	Imperial Grape Tumbler - Green
<u>450</u>	37.	N THREE FRUITS STIPPLED PLATE - AQUA W/OPAL. TIPS (LIGHT OPAL.; VERY UNUSUAL PLATE)	<u>35</u>	75.	Imperial Grape Tumbler - Amber (scarce color)
<u>725</u>	38.	N THREE FRUITS STIPPLED PLATE - AQUA OPAL. (RARE & DESIRABLE)	<u>12 1/2</u>	76.	Imperial Grape Tumbler - Smoke (scarce color)
<u>40</u>	39.	8" Imperial Heavy Grape Plate - Pur.	<u>100</u>	77.	WESTMORELAND CHECKERBOARD GOBLET - AMY. (RARE & UNUSUAL)
<u>225</u>	40.	Imperial Homestead NuArt Plate - Green (signed NuArt; chipped along edge)	<u>575</u>	78.	VINTAGE GRAPE LARGE ICE CREAM BOWL - RED (SILVERY IRID.; GOOD RED)
<u>115</u>	41.	9" Orange Tree Plate - White	<u>175</u>	79.	N Smooth Panel Butter Pat Set (or Nut Set) - Mari. (scarce color)
<u>5</u>	42.	Waterlily and Cattail Saucer (or Plate) - Mari.	<u>700</u>	80.	N WIDE PANEL FOUR LILY EPERGNE - WHITE (RARE AND VERY DESIRABLE)
<u>625</u>	43.	ILLINOIS SOLDIERS AND SAILORS PLATE - MARI. (VERY RARE AND DESIRABLE)	<u>325</u>	81.	N Wide Panel Four Lily Epergne - Mari. (scarce; center lily glued in place)
<u>65</u>	44.	9" Leaf Chain Plate - Mari.	<u>375</u>	82.	Heavy Iris 7 pc. Tankard Water Set - Mari. (scarce)
<u>140</u>	45.	9" Peacock and Grape Ftd. Plate - Mari. (scarce)	<u>525</u>	83.	N ORIENTAL POPPY 5 PC. TANKARD WATER SET - PUR. (NICE SET)
<u>170</u>	46.	9" Captive Rose Plate - Blue	<u>120</u>	84.	Mikado Compote - Mari.
<u>165</u>	47.	9" Persian Medallion Plate - Blue	<u>80</u>	85.	Blackberry Miniature Compote - Blue
<u>550</u>	48.	9" GREEK KEY PLATE - GREEN (VERY RARE PATTERN AND COLOR)	<u>55</u>	86.	CORN BOTTLE - MARI. (RARE)
<u>255</u>	49.	9" N HEART AND FLOWERS PLATE - PUR. (SCARCE AND VERY DESIRABLE)	<u>235</u>	87.	N CORN VASE - ICE GREEN (SCARCE)
<u>600</u>	50.	N EMBROIDERED MUMS PLATE - ICE GREEN (VERY RARE)	<u>210</u>	88.	N Tornado Vase - Pur. (scarce pattern; nice)
<u>350</u>	51.	9" N PEACOCK PLATE - ICE GREEN (SCARCE)	<u>300</u>	89.	N DAISY AND DRAPE VASE - AQUA OPAL. (RARE AND DESIRABLE)
<u>110</u>	52.	N Peacocks Bowl - Mari.	<u>90</u>	90.	N Daisy and Drape Vase - White (scarce)
<u>80</u>	53.	9 1/2" Acanthus Plate - Mari.	<u>400</u>	91.	9" N TREE TRUNK VASE - AQUA OPAL. (VERY RARE)
<u>550</u>	54.	WISHBONE WATER PITCHER - GREEN (RARE & VERY DESIRABLE)	<u>140</u>	92.	N Tree Trunk Vase - Mid-Size - White (scarce)
<u>1200</u>	55.	STORK & RUSHES MUG - COBALT BLUE (EXTREMELY RARE COLOR; ONE OF A VERY FEW)	<u>70</u>	93.	Dugan Ski Star Domed Ruffled Banana Boat - Pur. (scarce)
<u>240</u>	56.	Heron Mug - Pur. (scarce)	<u>400</u>	94.	DUGAN STRAWBERRY ONE LILY EPERGNE - PUR. (VERY RARE AND DESIRABLE ITEM)
<u>65</u>	57.	N Singing Bird Mug - Blue	<u>50</u>	95.	DUGAN DAHLIA TWIST EPERGNE WITH METAL BASE - MARI. (ONE EXAMPLE OF THIS PATTERN I'VE SEEN - EXTREMELY RARE)
<u>235</u>	58.	N DANDELION MUG - AMY. (SCARCE)	<u>120</u>	96.	N Heart & Flowers Compote - White
<u>250</u>	59.	N Dandelion Mug - Aqua Opal. (rare; small base chip)	<u>90</u>	97.	Captive Rose Stemmed Compote - White
<u>65</u>	60.	Beaded Shell Mug - Blue	<u>225</u>	98.	Imperial Poppy Show Vase - Mari. (scarce)
<u>17 1/2</u>	61.	Orange Tree Standard Size Mug - Mari.	<u>500</u>	99.	IMPERIAL SCROLL & FLOWERS PANELS LG. VASE - PUR. (EXTREMELY RARE VASE PATTERN; HAS VERY TINY CHIP; NICE)
			<u>325</u>	100.	N BUSHEL BASKET - AQUA OPAL. (RARE AND DESIRABLE)
			<u>110</u>	101.	N Bushel Basket - Pur.
			<u>150</u>	102.	N Eight Sided Bushel Basket - Elec. Blue (scarce)
			<u>45</u>	103.	N Bushel Basket - Ice Green (handle crack)

- 25 173. Rustic Vase - White
50 174. Squatty Dugan Pulled Loop Vase - White (unusual)
115 175. Dugan Nautilus Novelty - Pur. (scarce; not signed)
100 176. **CZECHOSLOVAKIA BOUDOIR LAMP AND SHADE - MARI. (RARE AND VERY UNUSUAL)**
NIS. 177. Princess Lamp - Pur. (very scarce)
195 178. Apple Tree Water Pitcher - Mari.
NIS. 179. Imperial Windmill Water Pitcher - Clam. (small chips)
180 180. 9" Poppy Show Bowl - Cobalt Blue
165 181. 9" Poppy Show Bowl - Mari.
350 182. **10" LITTLE FLOWERS CHOP PLATE - MARI. (VERY RARE SIZE FOR THIS PATTERN)**
190 183. 9" Heart and Vine Plate - Amy. (very scarce; nice)
30 184. 8½" Heart and Vine Bowl/C.R.E. - Amy.
165 185. 9" Rose Show Plate - Cobalt Blue (base chip; scarce)
240 186. 9" Rose Show Plate - Cobalt Blue (base chip; scarce)
500 187. **9" ROSE SHOW VARIENT PLATE/RIBBED EXT. - COBALT BLUE (VERY RARE AND DESIRABLE PATTERN)**
225 188. **9" ROSE SHOW PLATE - PUR. (RARE AND DESIRABLE)**
195 189. 9" Rose Show Plate - Cobalt Blue (base chip)
100 190. 9" Rose Show Plate - Cobalt Blue (chip on flower)
170 191. 6½" Persian Garden Plate - Peach Opal. (nice example; scarce)
35 192. 6½" Persian Garden Plate - Mari.
140 193. 7½" Vintage Grape Plate - Amy. (super irid.)
1250 194. **ROSES AND RUFFLES GONE-WITH-THE-WIND LAMP - BUTTERSCOTCH (VERY RARE TO FIND ANYMORE; PERFECT AND GOOD IRID.)**
500 195. **SUNKEN HOLLEY GONE-WITH-THE-WIND LAMP - BUTTERSCOTCH (RARE ITEM; SMALL SPIDER IN TOP SHADE, POSSIBLY THERE SINCE PRODUCTION)**
75 196. Hyacinth Gone-with-the-Wind Lamp Base Only - Mari. (scarce pattern; anyone have the shade?)
100 197. **FILE TUMBLER - MARI. (RARE PATTERN; SUPER COLOR)**
75 198. Dahlia Tumbler - Amy.
50 199. Beaded Shell Tumbler - Mari.
50 200. Beaded Shell Tumbler - Blue
25 201. Grapevine Lattice Tumbler - Mari.
40 202. Rambler Rose Tumbler - Blue
20 203. (2) Maple Leaf Tumbler - Blue
35 204. Maple Leaf Tumbler - Pur.
100 205. (2) Cherry Wreath Tumblers - White (one chipped; to be sold separately)
45 206. Flute #3 Tumbler - Pur.
N.S. 207. M'burg Feather and Heart Tumbler - Mari. (scarce)
40 208. M'burg Diamond Tumbler - Green
35 209. M'burg Diamond Tumbler - Amy.
- 65 210. Milady Tumbler - Blue (scarce)
50 211. Butterfly and Fern Tumbler - Blue
75 212. Orange Tree Orchard Tumbler - Blue
60 213. Apple Tree Tumbler - Blue
25 214. Lattice and Grape Tumbler - Blue
45 215. (2) Blackberry Block Tumbler - Mari. (one chipped; to be sold separately)
60 216. Imperial Windmill Tumbler - Green
150 217. **BUTTERFLY AND BERRY TUMBLER - GREEN (SCARCE COLOR)**
850 218. **M'BURG PEACOCK AT THE URN BANANA SHAPED BERRY BOWL - VAS. (EXTREMELY RARE COLOR AND SHAPE; HAS BASE CHIP; SUPER COLOR AND IRID.)**
300 219. M'burg Trout and Fly Ruffled Bowl - Green (scarce)
35 220. M'burg Holly Sprig Ruffled Bowl - Amy.
50 221. M'burg Multi Fruit and Flowers Stemmed Sherbert - Green (smoothed spot and crack)
475 222. **GRAPE ARBOR 7 PC. TANKARD WATER SET - PUR. (SCARCE SET; TWO TUMBLERS CHIPPED)**
200 223. **M'BURG SWIRL HOBNAIL ROSE BOWL - PUR. (SCARCE)**
125 224. M'burg Swirl Hobnail Rose Bowl - Mari. (scarce)
225 225. M'burg Swirl Hobnail Swung Vase - Green (very rare)
110 226. M'burg Swirl Hobnail Swung Vase - Amy. (scarce)
1300 227. **M'BURG WILD ROSE MID SIZE LAMP WITH INT. FLORAL BASE PATTERN - 5-5/8" BASE - AMY. (EXTREMELY RARE; ONLY ONE WITH INTERIOR PATTERN I'VE SEEN)**
325 228. **M'BURG HOBNAIL ROSE BOWL - AMY. (SCARCE)**
145 229. Imperial Fashion 7 pc. Water Set - Mari. (two tumblers chipped)
275 230. **M'BURG SUNFLOWER PIN TRAY - GREEN (RARE)**
250 231. **M'BURG SEACOAST PIN TRAY - GREEN (RARE)**
275 232. Horshead Medallion Ftd. Rose Bowl - Cobalt Blue (very scarce)
95 233. Butterflies Bon Bon with Horlacher Advertisement - Amy.
45 234. **UNLISTED POPPY PATTERN TWO HANDLED STEMMED BON BON - MARI. (A VERY RARE UNKNOWN PATTERN; CHECK AT ONE HANDLE)**
2242 235. Stippled Rays Bowl - Pur.
140 236. Pony Bowl - Amy. (scarce color)
400 237. **ORANGE TREE 8 PC. PUNCH SET - WHITE (RARE SET)**
325 238. **ORANGE TREE LOVING CUP - WHITE (RARE)**
N.S. 239. Orange Tree Loving Cup - Mari. (scarce)
25 240. Sunflower Ftd. Bowl - Mari.
100 241. **N HOLIDAY TRAY - MARI. (EXTREMELY RARE PATTERN)**
75 242. Dugan Beaded Basket - Pur. (scarce color; nice)

FIRST-CLASS MAIL
U.S. POSTAGE
PAID
Middleburg, Pa. 17842
Permit No. 1

Tom Burns
109 East Steuben Street
Bath, N.Y. 14810
(607) 776-7942

- 125 243. Imperial Grape Handled Basket - Smoke
(scarce color)
- 25 244. 6" Miniature Basketweave Handled Basket -
Mari.
- 45 245. Punch Top Only - Mari. (tooth ground down)
- WS 246. Basketweave Creamer Whimsey - Lt. Mari.
(has been swung into a tiny tankard; has chip
on domed base)
- 320 247. Imperial Grape 7 pc. Wine Set - Pur. (scarce
set)
- 105 248. Imperial Grape Water Carafe - Pur.
249. (6) Orange Peel Punch Cups - Mari.
- 27 1/2 250. N Leaf and Beads Ftd. Rose Bowl - Pur.
(chipped feet)
- 155 251. Stork and Rushes Hat Shape - Amy. (scarce)
- 20 252. Persian Medallion Bon Bon - Mari.
- 5 253. Stippled Rays Two Handled Bon Bon - Mari.
- 25 254. Octagon Sugar Lid Only - Mari.
- 1 255. Octagon Butter Lid Only - Green (tough; who
has the base?)
- 35 256. N Bushel Basket - Green (cracked)

— ADDITIONAL ITEM —

Butterfly & Berry 3 Footed Nut Bowl - Amythest
(unusual size and pattern, very rare)

