

CARNIVAL GLASS AUCTION

September 24, 1977 - 10:00 A.M.

Indianapolis, Indiana

Holiday Inn, Northwest

6330 Debonair Lane
Jct. I-74, I-65 and 465
Near Airport

PREVIEW: September 23, Friday Evening - 7:00 p.m. - 9:00 p.m.

Mr. & Mrs. Thomas McCrary, Owners



Motel Reservations — 317-293-3220

Dear Friends and Carnival Glass Lovers,

We are proud to offer this fine collection of Carnival Glass at public auction. Mr. and Mrs. McCrary have collected for many years and have chosen the best of color and most all pieces are perfect. You will find there is something for the advanced collector as well as for the novice. Make reservations now and plan to attend this fine auction of Carnival Glass.

Rex Lyons
7151W - 500S
Swayzee, Indiana 46986
317-922-7394

Auctioneers

Forrest Lyons, Jr.
305 East 44th Street
Marion, Indiana 46952

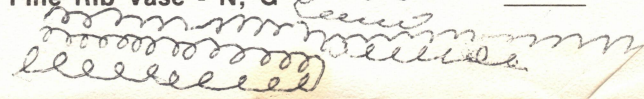
15	1. Leaf Rays Nappy - Pe	15 ⁰⁰	66. Cherry Bowl - Pe.	45 ⁰⁰
	2. Greek Key Bowl - Am.	45 ⁰⁰	67. French Knots Hat - B	27 ⁵⁰
	3. Peacock & Grape Bowl - G	15 ⁰⁰	68. Basketweave Open Edge - IG	20 ⁰⁰
	4. Heavy Grape Bowl - Am.	27 ⁵⁰	69. Stippled Rays Bowl - G	10 ⁰⁰
	5. Peacock Tail Bowl - G	15	70. Carnival Holly Bowl - B ^{Ch}	175 ⁰⁰
	6. Cherry Wreath Oval Bowl - M	37 ⁵⁰	71. Carnival Holly Bowl - M	12
37	7. Orange Tree Large Bowl - M	32 ⁵⁰	72. Carnival Holly Bowl - Wh.	55
	8. Captive Rose Bowl - Am.	30 275 ⁰⁰	73. Grape and Cable Bowl - M ^{WASTE}	125 ⁰⁰
	9. Strawberry Bowl - N, Am.	30	74. Grape and Cable Bowl - G ^{CRK}	15 ⁰⁰
	10. Coin Dot Bowl - Am.	12 ⁵⁰	75. Three Fruits Bowl - Am. ^{CHIP} 15 ⁰⁰	30 ⁰⁰
14	11. Peacock on Fence Bowl - B	130 ⁰⁰	76. Pony Bowl - M	475 ⁰⁰
	12. Leaf Chain Bowl - M	75 ⁰⁰	77. Six Pedals Bowl - Pe.	25 ⁰⁰
	13. Windflower Bowl - M	125 ⁰⁰	78. Fentons Cherry - Wh.	27 ⁵⁰
	14. Pine Cone Bowl - B	22 ⁵⁰	79. Peacock at Urn Bowl - IB	200 ⁰⁰
2	15. Leaf & Beads Bowl - M ^{OT}	20 ⁰⁰	80. Leaf Rays Nappy - M	10 ⁰⁰
	16. Three Fruits Bowl - N, G	30	81. Cherry Circle - B	30 ⁰⁰
	17. Thin Rib Vase - M	5	82. Illusion Bon-Bon - B	20
	18. Thin Rib Vase - N, G	10	83. Stippled Ray Bon-Bon - Am.	17 ⁵⁰
	19. Beaded Bulls Eye Vase - M	10	84. Millersburg Holly Whirl - G	225 ⁰⁰
	20. Imperial Swirl Vase - M	6	85. Grape and Cable Plate - N, Am.	57 ⁵⁰
	21. Diamond & Rib Vase - M		86. Grape and Cable Plate - 2 Sides Up - N, Am.	40 ⁰⁰
	22. Diamond Point Vase - N, Am.	15	87. Horses Heads Plate - M	55 ⁰⁰
	23. Diamond Point Vase - N, Am.	15	88. Three Fruits Plate - Am.	65 ⁰⁰
	24. Diamond Point Vase - N, Am.	20	89. Grape and Cable Sweetmeat - N, Am.	125 ⁰⁰
	25. Three Fruits and Flowers Bon-Bon - N, Am.	30	90. Grape and Cable Sweetmeat - N, Am.	200 ⁰⁰
	26. Three Fruits and Flowers Bon-Bon - N, B	27 ⁵⁰	91. Grape and Cable Sweetmeat - N, Am.	195 ⁰⁰
	27. Fine Rib Compote - N, G	75 ⁰⁰	92. Octogan Wine Bottle - M	22 ⁵⁰
	28. Peacock at Urn Compote - M	125 ⁰⁰	93. Acorn Bowl on Milk Glass Slag Base	45 ⁰⁰
	29. Imperial Grape Compote - M	125 ⁰⁰	94. Blue Stretch Tree Bark Stem Bowl - N	27 ⁵⁰
	30. Windflower Handled Boat - M		95. Blue Stretch Tree Bark Stem Bowl - N	27 ⁵⁰
	31. Leaf and Beads Rose Bowl - N, Am.		96. 2 Buttons	6 ⁰⁰
	32. Orange Tree Rose Bowl - Wh.	62 ⁵⁰	97. 2 Carnival Bead Hanks - Am.	7 ⁰⁰
	33. Persian Medallion Rose Bowl - B	42 ⁵⁰	98. Pair Earrings - Am.	10 ⁰⁰
	34. Singing Bird Mug - N, G	75 ⁰⁰	99. 2 Small Insulators - M	7 ⁰⁰
	35. Singing Bird Mug - N, M	30	100. Ribbon and Block, Very Rare, All Original Lamp, Dated 1910 - M	475 ⁰⁰
	36. Singing Bird Mug - N, Wh ^{LAK}	87 ⁵⁰	101. Zipper Loop Lamp, Large - M	250 ⁰⁰
	37. Singing Bird Mug - N, Am.	35 ⁰⁰	102. Fine Rib Compote - N, G	12 ⁵⁰
	38. Singing Bird Mug - N, B	40 ⁰⁰	103. Peacock at Urn Compote - M	12 ⁵⁰
	39. Singing Bird Mug - Custard	75 ⁰⁰	104. Hearts and Flowers Compote - M	15 ⁰⁰
	40. Cherry Wreath Berry Bowl - N, Am.	25	105. Basketweave Compote - Am.	125 ⁰⁰
	41. Pine Cone Berry Bowl - B	10 ⁰⁰	106. Persian Medallion Compote - M	175 ⁰⁰
	42. Pine Cone Berry Bowl - B	12	107. Northwood Fern Compote - N, Am.	30 ⁰⁰
	43. Grape and Cable Berry Bowl - Am.	175 ⁰⁰	108. Northwood Fern Compote - N, G	37 ⁵⁰
	44. Diamond Point Column Berry Bowl - M	100	109. Carnival Holly Compote - M	
	45. Cosmos Variant Bowl - Am.	35	110. Peacock at Urn Berry Bowl - Am.	25 ⁰⁰
	46. Orange Tree Bowl - B ^{CHIP} 5 ⁰⁰	25 ⁰⁰	111. Strawberry Berry Bowl - Am.	12 ⁵⁰
	47. Nesting Swan - Am.	95 ⁰⁰	112. Two Flowers Berry Bowl - Am.	10 ⁰⁰
20	48. Coin Dot Bowl - G	15	113. Persian Medallion Berry Bowl - M	5 ⁰⁰
	49. Scales Bowl - Blue Op.	67 ⁵⁰	114. 2 Panther Berry Bowls - M	22 ⁵⁰
	50. Carnival Thistle Bowl - Am.	22 ⁵⁰	115. Maple Leaf Berry Bowl - Am.	15 ⁰⁰
	51. Millersburg Strawberry Bowl - G	30 ⁰⁰	116. Stippled Rays Bowl - G	15
20	52. Floral and Optic Bowl - Am.	22 ⁵⁰	117. Basketweave Open Edge - M	175 ⁰⁰
	53. Three in One Bowl - Am.	175 ⁰⁰	118. Carnival Holly Bowl - M	125 ⁰⁰
	54. Cherry Wreath Oval Bowl - Am.	65 ⁰⁰	119. Carnival Holly Bowl - B	25 ⁰⁰
	55. Fentons Thistle Oval Bowl - Am.	92 ⁵⁰	120. Grape and Cable Bowl - M	15 ⁰⁰
	56. Stippled Rays Bowl - M	5 ⁰⁰	121. Grape and Cable Bowl - M	15 ⁰⁰
	57. Stippled Rays Small Bowl - Am.	75 ⁰⁰	122. Grape and Cable Bowl - Am.	35 ⁰⁰
	58. Stippled Rays Bowl - Am.	10	123. Grape and Cable Bowl - Am.	15 ⁰⁰
	59. Windmill Bowl - Smoke	22 ⁵⁰	124. Sailboat Wines - M ^{37⁰⁰ 15}	15 ⁰⁰
	60. Embroided Mums Bowl - Periwinkle	42 ⁵⁰	125. Soda Gold Spitton, Chip - M	15 ⁰⁰
	61. Captive Rose Bowl, chip - Am.	75 ⁰⁰	126. Fenton Grape Wine - Am.	
	62. Flowers and Frames Bowl - Am.	45 ⁰⁰	127. Flower Frog - M	
	63. Open Rose Fernery - B	25 ⁰⁰	128. Grape & Cable Cup and Saucer, Chip - M ⁴⁸	40 ⁰⁰
	64. Peacock at Urn Bowl - B	50 ⁰⁰	129. 2 Orange Tree Mugs - M	15 ⁰⁰
	65. Fine Rib Bowl - G	75 ⁰⁰		

Wh.-White, Am.-Amethyst or Purple, M.-Marigold, Pe.

130. Stork in Rushes Mug - Am. 45⁰⁰
 131. Peacock and Grape Bowl - Red 135⁰⁰
 132. Orange Tree Mug, Red 140
 133. Basketweave Hat - Red 95
 134. Blackberry Spray Hat - Red 115
 Thin Rib Vase - Red 50
 136. Blackberry Spray Hat - Amberina Red 75
 137. Stippled Rays Bowl - G 125⁰⁰
 138. Grape and Cable Bowl - Am. 9 m 20⁰⁰
 139. Grape and Cable Bowl - G
 140. Grape and Cable Bowl - N, IB
 141. Three Fruits Bowl - Am.
 142. Persian Medallion Bowl - M
 143. Persian Medallion Bowl - M
 144. Hearts & Flowers Bowl - Wh.
 145. Three Fruits Bowl - Am.
 146. Poppy Show Bowl - M 60
 147. Poppy Show Bowl - P.C.H.P. 100 60
 148. Grape Fernery - M 275⁰⁰
 149. Owl Bank - M 50⁰⁰
 150. Liberty Bell Bank - M
 151. Covered Duck - M 1250
 152. Thin Rib Vase - Am. 9⁰⁰
 153. Thin Rib Vase - Am. 10
 154. Singing Bird Water Set - N, G 410
 155. Grape and Cable Water Set - N, Am. 290
 156. Floral and Grape Water Set - B 190⁰⁰
 157. Butterfly and Berry Water Set - B 380⁰⁰
 158. Grape and Gothic Arch Water Set - M 95⁰⁰
 159. Apple Tree Water Set - M 90
 160. Vineyard Water Set - M 80
 161. Crackel Water Set - M 30
 Fine Rib Vase - M 3
 162. Tree Trunk Vase - N, M
 164. Tree Trunk Vase - N, M
 165. Tree Trunk Vase - N, Am.
 166. Leaf Rays Nappy - M
 167. Butterfly Bon-Bon - M
 168. Ray Bon-Bon - G
 169. Grape and Cable Bon-Bon - Am.
 170. Grape and Cable Bon-Bon - B
 171. Rose Show Plate - Wh. 170
 172. Poppy Show Plate - M 105⁰⁰
 173. Dragon and Lotus Bowl - Am. 225⁰⁰
 174. Hearts and Vine Bowl - B 30⁰⁰
 175. Bullseye and Beads, N. Bowl - G 15
 176. Imperial Grape Bowl - Am. 325⁰⁰
 177. Hearts and Vine Bowl - Am. 225⁰⁰
 178. Nippon Bowl - IB 525⁰⁰
 179. Northwood Cherry Bowl - Am. 325⁰⁰
 180. Chrysanthemum Bowl - M 35⁰⁰
 181. Kitten Cup and Saucer - M 120⁰⁰
 182. 3 Kitten Spoons - M 45
 183. Kitten Cup - M 55
 184. Kitten Scalloped Bowl - M 50
 185. Kitten Cereal Bowl (2) - M 55
 186. Kitten Banana Bowls (3) - M 40
 187. Kitten Bowls With
 4 Sides Turned Up (5) - M 240 70 (340⁰⁰)
 188. Fentons Cherry Bowl - M 25⁰⁰
 Wishbone Bowl - G 35⁰⁰
 190. Ten Mums Bowl - G 475⁰⁰
 191. Chrysanthemum Bowl - M
 192. Double Stem Roses - M
 193. Orange Tree Large Bowl - B
 194. Persian Medallion,
 Grape & Cable, Large Bowl - B 115⁰⁰

195. Grape Arbor Bowl - M 275⁰⁰
 196. Two Flowers Bowl - M 225⁰⁰
 197. Two Flowers Bowl - B 35⁰⁰
 198. Stippled Rays Bowl - M 125⁰⁰
 199. Grape and Cable Whiskey Decanter
 (Damaged) - Am. 150⁰⁰
 200. Grape and Cable Shot Glasses (6) - Am. 165⁰⁰
 201. Butterfly and Tulip Square Bowl - Am. 650⁰⁰
 202. Iris Buttermilk Goblet - G 80⁰⁰
 203. Bumble Bee's Hatpin - Am.
 204. Epergne Base - Am. 35⁰⁰
 205. Side Lily for Wide Panel Epergne - G
 206. 2 Soda Pop Bottles - M
 207. Peacock at the Fountain
 Berry Set - Am. 275⁰⁰
 208. Pedal and Fan Berry Set
 (Damaged) - Pe. 65⁰⁰
 209. Grape and Cable Berry Set - N, Am. 235⁰⁰
 210. Butterfly and Berry Berry Set - M. 95
 211. Northwood Cherry Berry Set - Am. 85⁰⁰
 212. Butterfly and Berry Berry Bowl - M
 213. Grape and Cable Plate, 2 Sides Up -
 N, Am. 35⁰⁰
 214. Peacock Plate - IG 105⁰⁰
 215. Strawberry Plate - N, M 25⁰⁰
 216. Strawberry Plate - N, Am. 55⁰⁰
 217. Three Fruits Plate - Am. 60⁰⁰
 218. Grape and Cable Plate - Am. 70⁰⁰
 219. Grape and Cable Dresser Tray - Am. 140
 220. Pansy Relish Dish - Am.
 221. Peacock and Grape Bowl - Pe. 40⁰⁰
 222. Double Stem Rose Bowl - Am.
 223. Northwood Strawberry Bowl - Am.
 224. Peacock on Fence Bowl - Am.
 225. Embroided Mums Bowl - Am.
 226. Good Luck Bowl - Blue Op. 135⁰⁰
 227. Good Luck Bowl - B 80⁰⁰
 228. Good Luck Bowl - B 90
 229. Good Luck Bowl - Am.
 230. Grape Arbor Bowl - M
 231. Stippled Rays Bowl - M
 232. Stippled Rays Bowl - N, Am.
 233. Orange Tree Rose Bowl - M
 234. Garland Rose Bowl - B
 235. Fine Cut and Roses - Am.
 236. Roses Rose Bowl - Am.
 237. Daisy and Plumb Rose Bowl - Am.
 238. Grape and Gothic Arch Table Set - M
 239. Butterfly and Berry Spooner,
 Butter, Creamer - B
 240. Luster and Clear Sugar - Wh.
 241. Open Rose Covered Butter - M
 242. Diamond Point Vase - N, G
 243. Diamond Point Vase - M
 244. Tornado Vase - N, G
 245. Swirl Vase - M
 246. Jack-in-Pulpit Vase - Am.
 247. Northwood Drape Vase - G
 248. Stork Vase - M
 249. Graceful Vase - N, M
 250. 4 Tree of Life Car Vases - M
 251. Leaf Rays Nappy - M
 252. Fine Rib Vase - N, Wh.
 253. Fine Rib Vase - N, Wh.
 254. Fine Rib Vase - N, Wh.
 255. Fine Rib Vase - N, G
 256. Fine Rib Vase - N, G

each, IG.-Ice Green, IB.-Ice Blue, B.-Blue, G.-Green

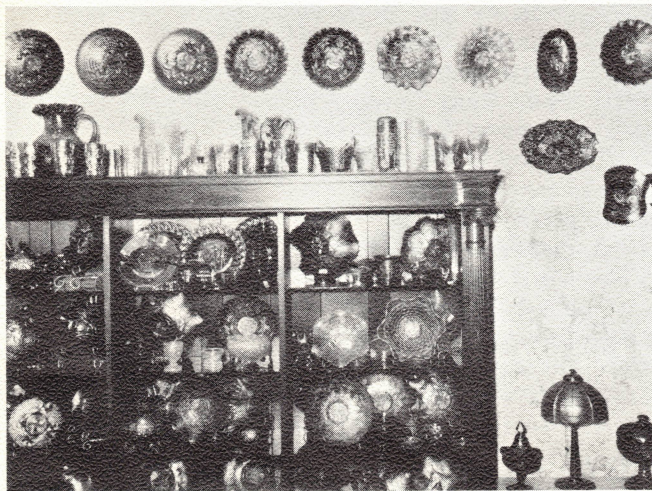


- 257. Fine Rib Vase - N, Am. _____
- 258. Fine Rib Vase - N, Am. _____
- 259. Fine Rib Vase - N, Am. _____
- 260. Bushel Basket - N, G _____
- 261. Bushel Basket - N, B _____
- 262. Bushel Basket - N, M _____
- 263. Waffle Block Basket, Sm. _____
- 264. Small Hat - M _____
- 265. Persian Medallion Bon-Bon - M _____
- 266. Wreath of Roses Bon-Bon - Am. _____
- 267. Three Fruits and Flowers Bon-Bon - B _____
- 268. Stippled Rays Bowl - M _____
- 269. Stippled Rays Bowl - M _____
- 270. New Orleans 1910 Champaign - Clear _____
- 271. Grape and Cable Hat Pin Holder - N, M _____
- 272. Grape and Cable Hat Pin Holder - N, G _____
- 273. Grape and Cable Covered Compote N, Am. _____
- 274. Violet Basket without Holder - M _____
- 275. Little Flowers Bowl - Am. _____
- 276. Lattice and Poinsetta Bowl - M _____
- 277. Cherry Bowl - Am. _____
- 278. Vintage Bowl - B _____
- 279. Swirl Water Pitcher - M _____
- 280. Lattice and Daisy Water Pitcher, Crack - M _____
- 281. Windmill Milk Pitcher - Sm. _____
- 282. 3 Oriental Poppy Tumblers - N, IB _____
- 283. Peacock at Fountain Tumber - B _____
- 284. 6 Luster and Clear Tumblers - M _____
- 285. Grape and Lattice Tumber - B _____
- 286. Raspberry Tumber - M _____
- 287. 6 Grape and Gothic Arch Tumblers - M _____
- 288. Butterfly and Berry Tumbler - B _____
- 289. Grape and Cable Tumblers (2) - N, Am. _____
- 290. Tiger Lily Tumbler - Am. _____
- 291. Painted Cherry Tumblers (2) - B _____
- 292. Northwood Fancy Candy Dish - Wh. _____
- 293. Wild Rose Candy Dish - N, G _____
- 294. Small Smooth Bowl - Am. _____
- 295. Stippled Flowers Bowl - Pe. _____
- 296. Windflower Bowl - M _____
- 297. Blackberry Wreath Bowl - Am. _____
- 298. Pansy Bowl - Am. _____
- 299. Vintage Bowl - Am. _____
- 300. Stag and Holly Large Bowl - B _____

- 301. Stag and Holly Bowl - Periwinkle _____
 - 302. Vintage Bowl - G _____
 - 303. Peacock and Grape Bowl - B _____
 - 304. Strawberry Bowl - N, Am. _____
 - 305. Leaf Chain Bowl - M _____
 - 306. Vintage Rose Bowl - Am. _____
 - 307. Daisy and Plumb Rose Bowl - Am. _____
 - 308. Orange Tree Rose Bowl - M _____
 - 309. Garland Rose Bowl - B _____
 - 310. Louisa Rose Bowl - G _____
 - 311. Wild Rose Rose Bowl - N, M _____
 - 312. Imperial Jewels Candy Dish - IB _____
 - 313. Diamond Point Block and Rib Basket - N, Am. _____
 - 314. Loving Cup - B _____
- 1969 thru 1975 I.C.G.A. Souvenir Pieces.
Other miscellaneous pieces.



Rex Lyons
7151W - 500S
Swayzee, Indiana 46986



551

293

681