

CARNIVAL GLASS AUCTION

June 4, 1977 - 10:30 A.M.

Marion, Indiana

4-H Building

State Road 18 -
1 Mile East of Marion

Mr. & Mrs. Forrest Horr, Owners



**MOTELS: Holiday Inn - 317-664-9021
Broadmoor Budget Motel - 317-664-0501**

Dear Friends and Carnival Glass Lovers,

We are proud to offer this fine collection of Carnival Glass at public auction. Mr. & Mrs. Horr have retired and wish to travel. They have collected for many, many years and have had great enjoyment from their collection. Included in their collection is the very rare Queen's Lamp, one of two that has been found. Make plans now to attend — motels are nearby, food will be served throughout the sale.

Rex Lyons
7151W - 500S
Swayzee, Indiana 46986
317-922-7394

Auctioneers

Forrest Lyons, Jr.
305 East 44th Street
Marion, Indiana 46952

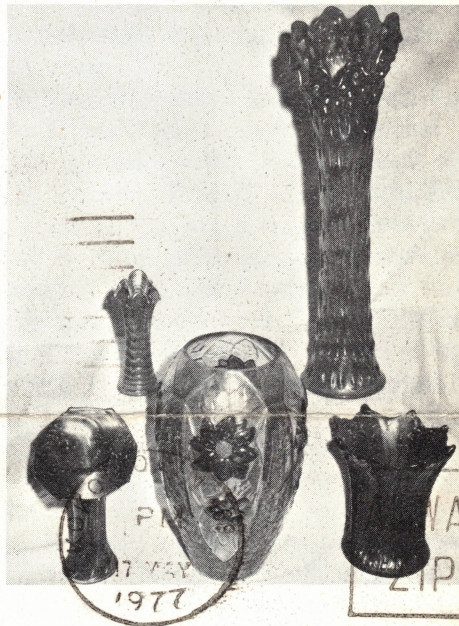
1. Good Luck Bowl - B	90	64. Persian Medallion Compote - B	35
2. Acorn Burr Sugar Bowl - M MAPA BAR DASH 12 ⁵⁰	12 ⁵⁰	65. Cut Flowers Vase - M	50
3. Fleur DeLys Bowl - G	40	66. Polo Ash Tray - M	12 ⁵⁰
4. Basket Weave Hat - B	15	67. New Orleans Shrine - C1	80
5. Basket Weave & Berry Hat - M	10	68. Tobacco Leaf Champaign - W	75
6. Sunflower Plate - G cosmos U	22 ⁵⁰	69. Pittsburg Champaign 1911	50
7. Louisa Salt & Pepper - M	12 ⁵⁰	70. Ribbon & Tie Bowl - M	17 ⁵⁰
8. Swirl Rib N. Pitcher - M Ras	40	71. Floral & Grape Pitcher - M	52 ⁵⁰
9. Fish Scale Bowl - Am.	5	72. Stippled Rais N. Bowl - Am. CHP	15
10. Grape & Cable Bowl - Am.	37 ^{1/2}	73. Northwood Peacock Bowl - Am.	75
11. Carnival Holly Small Compote - B	15	74. Holly Carnival Hat - B	10
12. Rippled Vase - G	15	75. Three Fruit Footed Bowl - Am.	40
13. Drapery Vase - G	30	76. Ruffled Round Up Plate - Pe.	90
14. Beaded Bulls Eye Vase - M	12 ⁵⁰	77. Pastel Swan - Pink	12 ⁵⁰
15. Rabbit Bank - M	25	78. Pastel Swan - G	12 ⁵⁰
16. Owl Bank - M	16	79. Butterfly Nappy - B	20
17. Good Luck Plate - Am.	115	80. Singing Bird Nappy - G B/C	40
18. Northwood Basket - B	50	81. Butterfly N. Nappy - G	15
19. Fish Scale Plate - G	17 ⁵⁰	82. Peacock at the Fountain Pit. & P21-B 17 ⁵⁰	17 ⁵⁰
20. Shell Mug - Am.	55	6 Tumblers - M	8
21. Thin Ribbed Vase - SDAM	3	83. Thistle & Thorn Creamer - M	8
22. Pair Bud Vases - M	15	84. Pineapple Creamer - Am.	25
23. Owl Bank - M	10 ⁷⁵⁰	85. Peacock at the Fountain Punch Bowl (Dam.) - 1B	137 ⁵⁰
24. Bird & Grapes Wall Vase - M	12 ⁵⁰	86. Peacock at the Fountain Punch Cup - Am.	20 ⁰⁰
25. Grape & Cable Footed Orange Bowl - M	55	87. Singing Bird Mug - M	40
26. Hob Star Cookie Jar - M	40	88. Floral & Grape Variant Tumbler - Am.	35
27. Apple Tree Tumbler - B	25	89. Nautilus - Pe.	115
28. Basket Weave Basket - M min	20 ¹²⁵⁰	90. Daisy Basket - M	30
29. Orange Tree Compote - M	8	91. Pair Opalescent Vases - Pe.	42 ⁵⁰
30. Wide Panel Mini Compote - M	16 ⁷⁵⁰	92. Drapery Vase - M	7 ⁵⁰
31. Persian Medallion Bowl - G UG	20	93. Vase - 1B	15
32. Golden Flower Vase - M	11	94. Thin Ribbed Vase - S DAM	5
33. Stork Vase - M	7	95. Ring Three - Vase	12 ⁵⁰
34. Orange Tree Footed Orange Bowl - M	60	96. Apple Creamer - M	7 ⁵⁰
35. Peacock & Grape Bowl - G	25	97. N. Strawberry Bowl - G	27 ⁵⁰
36. Peacock & Grape Bowl - B	22 ⁵⁰	98. Peacock at Fountain Bowl - P sm	12 ⁵⁰
37. Millersburg Whirling Leaves Bowl - G	40 ²⁷⁵⁰	99. Daisy & Plume Compote - M	1550 ⁰⁰
38. Millersburg Whirling Leaves Bowl - Am.	47 ⁵⁰	100. Queen's Lamp - G	25
39. Vintage Sandwich Tray - M	12 ⁵⁰	101. Bull's Eye & Leaves N. Bowl - G	25
40. Acorn Burr Tumbler - M m.w.	12 ⁵⁰	102. Crab Claw Bowl - G	12 ⁵⁰
41. Stork Punch Cup - M DAM	5	103. Paneled Dandelion Tumbler - Am.	15
42. Stork Mug - M	27 ⁵⁰	104. Fan Vase - G struck	47 ⁵⁰
43. Double Stem Rose Bowl - W	60	105. Orange Tree Footed Orange Bowl - M	47 ⁵⁰
44. Fine Ribbed Vase - B	12	106. Kingfisher Bowl - M	15 ⁰⁰
45. Fine Ribbed Vase - M	10	107. Holly Carnival Bowl - B	30 ⁰⁰
46. Three Fruit Plate - P	50	108. Stag & Holly Footed Bowl - M sm	40 ⁰⁰
47. Peacock at the Urn Bowl - M	55	109. Horses Head Footed Bowl - M	40
48. Dragon & Berry Bowl - B	185	110. Stag & Holly Footed Bowl - G sm	20
49. Good Luck Bowl - B	80	111. Star of David Bowl - Am.	130
50. Acorn Bowl - B		112. Apple Blossom Twig Plate - Am.	42 ⁵⁰
51. Apple Blossom Bowl - M		113. Lion Bowl - M	35
52. Diamond Lace Bowl - P	15	114. Orange Tree Mug - B	7 ⁵⁰
53. Panther Berry Bowl - M	50	115. Wide Panel Mini Compote - M	7 ⁵⁰
54. Odd Shape Vase - M	10	116. Persian Medallion Bowl - G	55 ⁰⁰
55. Swirl Vase - M	6	117. Carnival Swan Bowl - M	25
56. Acanthus Bowl - M	35	118. Imperial Grape Tumbler - Am.	20 ⁰⁰
57. Stippled Rais N. Nappy - G	12 ⁵⁰	119. Heart and Vine Bowl - B	
58. Melon Rib Covered Candy Jar - M	8	120. Small Orange Tree Mug - M	
59. Crackle Candy Jar - M	8	121. Field Thistle Small Creamer - 1B NEW	35
60. Cornucopia Pair Vases - M	15	122. Field Thistle Creamer & Sugar - M	30 ⁰⁰
61. Hattie Bowl - S	20	123. Field Thistle Berry Bowl Small & Large - M	10 ⁰⁰
62. Thistle Bowl - G	27 ⁵⁰		
63. Three Fruit Footed Bowl - AO	140		

124.	Field Thistle Vase - M	15 ⁰⁰	183.	Jack in the Pulpit Vase - M	17 ⁵⁰	
125.	Field Thistle Compote Large - M	75 ⁰⁰	184.	Basket Weave & Cable Cream & Sugar - M	25 ⁰⁰	
126.	Vintage Bowl - Am.	5 ⁰⁰	185.	Scroll Embossed Bowl - G	75 ⁰⁰	
127.	Stippled Raise Bowl - Am.	22 ⁵⁰	186.	Scroll Embossed Bowl - P	22 ⁵⁰	
128.	Soda Gold Spittoon - G	47 ⁵⁰	187.	Persian Medallion Small Plate - M	10	
129.	Soda Gold Spittoon - M	25	188.	Diamond Sunburst Bottle - M	17 ⁵⁰	
130.	Petal & Fan Bowl - Pe.	27 ⁵⁰	189.	Imperial Jewel Plate - Red	50	
131.	Souvenir of Whittonburg, Wis. Footed Vase - M	15	190.	Millersburg Holly Nappy - Am. BB	20	
132.	Jack in the Pulpit Vase - M	17 ⁵⁰	191.	N. Grape Leaves - G	30	
133.	Diamond Shrub Vase - M	75 ⁰⁰	192.	Persian Medallion Hair Receiver - W	45	
134.	Fostoria Taffeta Candleholder - P	5	193.	Memphis Punch Cup - Am.	15	
135.	Peacock at the Urn Sherbert (Dam.) - 1B	17 ⁵⁰	194.	Blackberry Wreath Bowl - G	30	
136.	Fashion Punch Cups, 6 - M	40	195.	Pods & Poseys Bowl - P	45	
137.	Embroidered Mums Bowl - B	40	196.	15" Wide Panel Plate - M	20	
138.	Vintage Nappy - Am. BB	25	197.	Honeycomb Four Leaf Clover Bowl - Pe.	25	
139.	Persian Medallion Nappy - M BB	17 ⁵⁰	198.	Fentons Flowers Rose Bowl - M	20	
140.	Pond Lily Nappy - M BB	17 ⁵⁰	199.	Star of David Bowl - P	20	
141.	Vintage Nappy - B BB	17 ⁵⁰	200.	Universal Home Bottle - M	22 ⁵⁰	
142.	Stippled Rays - M BB	5	201.	Double Stem Rose - M	12 ⁵⁰	
143.	Lotus & Grape Footed Bowl - Am.	20	202.	Butterfly & Berry Footed Bowl - M	20	
144.	Carnival Shell Berry Set - Am. 17 ⁵⁰	7 ⁵⁰	203.	Swirl Vase - S	10	
145.	Pony Bowl - Am.	97 ⁵⁰	204.	Fine Ribbed Vase - B	10	
146.	Concave Diamond Tumbler - 1B		205.	Lined Lattice Vase - P Dam	10	
147.	Tornado Vase - G		206.	Buttermilk Goblet - M	12 ⁵⁰	
148.	Vase - Red	75 ⁰⁰	207.	Canadian Dry Bottle - M	7	
149.	Orange Tree Loving Cup - M	40 ⁰⁰	208.	Imperial Old Mark Bowl - W	17	
150.	Three Fruit Bowl - Am.	32 ⁵⁰	209.	Grape & Cable Bowl - Am.	25	
151.	Blackberry Mini Compote - B < H.P.	12 ⁵⁰	210.	Singing Bird Pitcher & 6 Tumblers - G	40 ⁰⁰	
152.	Golden Grape Rose Bowl - M	5 ⁵⁰	211.	Drapery Pitcher & 4 Tumblers - M		
153.	Heavy Iris Water Pitcher, 6 Tumblers - M	500	212.	Paneled Dandelion Tankard Pitcher (Dam.) - B		
154.	Imperial Candlesticks - G	15 ⁰⁰	213.	Vintage Water Pitcher & 4 Tumblers - M		
155.	L.B.J. Hat - M	75 ⁰⁰	214.	Pansy Spray Creamer - G		
156.	Funeral Vase - M	55	215.	Three Diamond Vase - Am.		
157.	Rustic Large Vase - B	27 ⁵⁰	216.	Three Diamond Vase - G		
158.	Rustic Vase - B	15	217.	Drapery Vase - 1G		
159.	Fenton Vase - W	20	218.	Good Luck Bowl - M		
160.	Zippered Loop Lamp - M		219.	Vintage Flute Bowl - B		
161.	Thistle & Thorn Footed Bowl - M		220.	Peacock Tail Compote - Am.		
162.	Vintage 3 Footed Nut Bowl - B	30	221.	Chrysanthemum Bowl - B		
163.	Fruit Lustre Tumbler - M	5	222.	Sail Boat Small Compote - M		
164.	Acorn Burr Tumbler - Am.	35	223.	Northwood Grape Footed Bowl - Am.		
165.	Grape & Cable Footed Orange Bowl - G	105	224.	Wreath of Roses Compote - G		
166.	Wide Panel Goblet - Red	75	225.	Grape & Cable Plate - G		
167.	Drapery, N. Bowl - 1B.	50	226.	Grape & Cable Plate - Am.		
168.	Drapery Rose Bowl - Am.	60	227.	Fanciful Plate - Am.		
169.	Grape & Cable N. Flared Hat - Am.	20	228.	Fanciful Plate - M		
170.	Persian Medallion Rose Bowl - B		229.	Orange Tree Plate - W		
171.	N. Grape & Cable Footed Plate - Am.		230.	Captive Rose Plate - M		
172.	Captive Rose Bowl - B	25	231.	Butterfly Nappy N. - Am.		
173.	Rose Show Plate - M	165	232.	Butterfly Nappy N - M		
174.	Pansy Spray Sugar Bowl - G	5	233.	Butterfly & Fern Tumbler - M		
175.	Fisherman's Mug - Am.	60	234.	Tracery 2 Handled Nappy - G		
176.	Fisherman's Mug - M	70	235.	Butterfly Nappy Fenton - M		
177.	Stippled Rays Nappy - Am.	5	236.	Lustre Rose - B		
178.	Shell & Jewel Sugar & Creamer - G	50	237.	Grape & Cable Punch Cup - Am.		
179.	Poppy Show Bowl - M	150	238.	Blackberry Wreath Millersburg - M		
180.	Isaac Benesch & Sons Bowl - Am.	105	239.	Persian Garden Bowl Large - W		
181.	Grape & Cable Pitcher & 6 Tumblers - P	290	240.	Three Fruit Footed Bowl - P		
182.	Grape & Cable Candlestick - Am.	85	241.	Grape & Cable Hat Pin Holder - P		
			242.	Fenton Grape & Cable Orange Bowl - G		

n: AO.-Aqua Opalescent: IB.-Ice Blue: Pe.-Peach

- 243. Orange Tree Powder Jar (Dam.) - M _____
- 244. Scale Band Pitcher & 6 Tumblers - M _____
- 245. Fenton Advertising Miller's Market - M _____
- 246. Large Footed Shell - Amber _____
- 247. Large Footed Shell - G _____
- 248. Small Footed Shell - P _____
- 249. Large Footed Shell - M _____
- 250. Star of David Footed Bowl - Am. _____
- 251. Pony Bowl - M _____
- 252. Grape Imperial Water Carafe - Am. _____
- 253. Blackberry Wreath Millersburg Bowl - G _____
- 254. Fenton Heavy Grape Berry Set - M _____
- 255. Cherry Bowl - G _____
- 256. Vintage Footed Bowl - P _____
- 257. Two Flower Footed Bowl - B _____
- 258. Fashion Pitcher - M _____
- 259. Soda Gold Water Pitcher - M _____
- 260. Butterfly & Berry Pitcher & 6 Tumblers - M _____
- 261. Fruit Lustre Tumbler - M _____
- 262. Diamond Rib Vase - G _____
- 263. Diamond Rib Vase - Am. _____
- 264. Rippled Vase - P _____
- 265. Laurel & Sprays Vase - M _____
- 266. Daisy & Cane Vase - M _____
- 267. Grape & Cable Powder Jar - P _____
- 268. Inverted Strawberry Powder Jar - M _____
- 269. Fenton Grape & Cable Orange Bowl - B _____
- 270. Fenton Thistle Banana Boat - B _____
- 271. Corinth Bowl - Am. _____
- 272. Basket Weave Vase - Am. _____
- 273. Rustic Vase - P _____
- 274. Knotted Beads Vase - B _____
- 275. Large Unknown Painted Vase - M _____

- 276. Dozen Roses Bowl - P _____
- 277. Butterfly & Berry Vase - M _____
- 278. Diamond Lace Small Bowl - Am. _____
- 279. Pineapple Compote - Am. _____
- 280. Carnival Holly Compote - B _____
- 281. Northwood Rosette Footed Bowl - G _____
- 282. Stag & Holly Footed Bowl - M _____
- 283. Urn Vase - M _____
- 284. Colonial Candlesticks - G _____
- 285. Grape & Cable Footed Bowl - G _____
- 286. Dragon & Lotus Bowl - B _____
- 287. Strawberry Nappy - M _____
- 288. Little Flowers Small Bowl - G _____
- 289. Blackberry Wreath Millersburg Bowl - Am. _____
- 290. Battenburg Lace No. 2 Plate - G _____
- 291. Battenburg Lace Bowl - M _____
- 292. Poinsetta Pitcher - M _____
- 293. Grapevine Lattice - M _____
- 294. Blackberry Wreath Bowl - G _____
- 295. Wide Panel Candlesticks - M _____
- 296. Cherry Bon Bon - M _____
- 297. Bells and Beads Ruffled Bowl - P _____
- 298. Three in One Bowl - Sm. _____
- 299. Dragon & Lotus Bowl - M _____
- 300. Chrysanthemum Bowl - M _____
- 301. Doubled Scroll Bowl & Candlesticks - M _____
- 302. Hemingray - 45 Insulators - M _____
- 303. Northwood No. 38 Light Shade - Pe. _____



Rex Lyons
7151W - 500S
Swayzee, Indiana 46986



Larry Young, Sr.
5758 Nightingale Court
Cincinnati, Ohio

45227