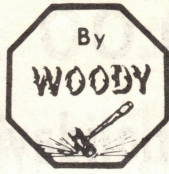


CARNIVAL GLASS AUCTION

AUCTION



Saturday October 16, 1976
10:00 A.M.



North Canton, Ohio



WOODY

AUCTION  REAL ESTATE COMPANY



CARNIVAL GLASS AUCTION

Saturday, October 16, 1976

10:00 A.M.

Holiday Inn

4520 Everhard St., N.W.

North Canton, Ohio

*Fr. Sat.
11-72*

Mr. & Mrs. G. J. Lab, owners

Mr. and Mrs. Lab have enjoyed collecting carnival glass for a number of years and have a large collection with a great variety of items.

They have decided to sell this large collection at public auction to the highest bidder.

Preview: Friday, 7 p.m.

Terms: Cash. Checks accepted if you are known to us or if accompanied by current bank letter.

Sale Manager:

John M. Woody

Rt. 1, Box 104
Douglass, Ks. 67039
Phone 316-746-2694

Auctioneer:

Terry L. Logsdon

303 E. Jackson, Box 32
Millersburg, Ohio 44654
Phone 216-674-7640

WATER SETS

- Raspberry water pitcher w/ 5 tumblers N, rare - ice blue *1350^{xx}*
- Fisherman's net pitcher w/ 6 tumblers - m
- Lattice and grape tankard pitcher w/ 8 tumblers - m *135*
- Floral and grape bulbous pitcher w/ 6 tumblers - m *165*
- Cherry enamel bulbous pitcher w/ 6 tumblers - cobalt
- Sunflower enamel pitcher w/ 6 tumblers - m
- Inside ribs-outside rings tankard pitcher w/ 7 tumblers - m
- Peacock Eye and grape pitcher w/ 6 tumblers - m
- Diamond lace pitcher w/ 6 tumblers - p *420 200*
- Dandelion tankard pitcher w/ 6 tumblers (Pitcher repaired and 1 tumbler ground) - g *125*
- Louisa (Irish Lace) pitcher w/ 6 tumblers - m

PITCHERS

- Shell and jewel milk pitcher - g
- Floral and grapevine pitcher - m
- Black enamel Chinese love story pitcher - m *50*
- Zig-zag enam. flowers fluted edge pitcher * Diag. band - w *130*
- Grape arbor tankard pitcher - w *250*
- Treebark tankard pitcher - m
- Feather and Heart pitcher - g
- Vineyard pitcher - m
- Louisa (Irish Lace) pitcher - m
- Tiger Lily pitcher - m *Dam*
- Treebark (Fisherman's net) pitcher - m
- Enamelled tankard pitcher - beautiful color - m *140*
- Cherries and flowers enamelled bulbous pitcher - b
- Raspberry milk pitcher p. 70⁰⁰*

Raspberry lustre milk pitcher N - p 70^{ea}
 Louisa (Irish Lace) cream pitcher - m
 Millersburg cherry water pitcher - g 450



Millersburg Cherry - Green

TABLE SETTINGS & PIECES

Pansy spray sugar & creamer - amber 20 each
 Late Lattice (Bouquet & Lattice) sugar & creamer - m
 Lustre Rose butter w/cover, sugar, creamer and spooner - m
 Late Iris butter dish - m
 Creamer - inside rib - m
 Late Iris butter dish w/cover - m
 Hobstar creamer - m
 Taffeta Rays of fine rib sugar and creamer - m
 Diamond Point & Daisy sugar bowl (rough spot on handle) - caramel

MILLERSBURG PIECES

NAVY STORE G 148
 Feather & Heart water pitcher - g 275
 Blackberry wreath plate 6" - 7" - m 130
 Cherry open sugar - amyt. 25
 Strawberry bowl - square 8" - 9" - p
 Big fish - g 200
 Country kitchen butter dish w/cover - p DAM 100
 Floral and Wheat 2 handled low compute puzzle interior - b
 2 Trout and Fly bowls 9" - g 120 - 105
 Marilyn tumbler - amyt
 Rose Column vase - amyt 325
 Country kitchen butter dish w/ cover (damaged) - p 100
 Blackberry wreath bowl 6 1/2" - g 195
 2 Millersburg court house bowls - scalloped - amyt. 225
 Blackberry wreath bowl w/ star center - amyt
 Multi-fruit & flowers punch bowl and base w/ 6 cups - amyt 360
 Diamond water set - pitcher and 5 tumblers - amyt 400
 Cherry butter dish w/ cover - m 50.00
 Cherry water pitcher - g 450^{ea}
 cherry ice cream P 60

PLATES

6 Late lattice 11 1/2" divided plates - m
 4 Late lattice 11" - m
 Bouquet and checkerboard - m
 Pine cone wreath - m
 Scales - beads exterior - m
 Peacock at Fountain / bearded berry exterior - blue 90
 Rayed - Lilies - enamel - m
 Stork A B C - m
 2 Imperial grape 7" - g 20-15
 Stag & Holly - Spatula feet - m 750
 Strawberry N 9" - p 50
 Three fruits - N - p 45 basket 45
 Egyptian band 8" - 9" (round-up) - peach 65
 Embossed grape 11" - 12" - g 75
 Battenburg Lace (fanciful) 7 1/2" - 9 1/2" - p 85
 Open Rose - g 25
 Woven Twigs 7" - Amyt. 40
 Strawberry - basket weave exterior - N 9" - g 55
 Holly Carnival 9 1/2" - g 35 105

PUNCH SETS

Laffle punch bowl and base w/ 4 cups - m
 Fashion punch bowl and base w/ 7 cups - m
 Memphis punch bowl and base w/ 8 cups - m 200

GRAPE & CABLE

3 tumblers - g 27^{ea}
 Water pitcher - m 60
 Bowl 6" -
 Bowl N 9" - 10" - p 25
 Bowl w/spatula feet - b
 Bowl - Plain exterior N - p
 2 Sauces - Basketweave exterior - N
 Water set (pitcher and 6 tumblers) - p
 2 cologne bottles w/ stoppers - m 95 ea
 Dresser tray - m 75
 Plate N 9" - g 45
 Hat pin holder - p 95 m 65
 Banana bowl - m 90
 Sweetmeat - p 125
 65 -> Creamer and spooner - p 35
 Plate w/spatula feet 9" - m
 Bowl - footed 8" w/green feet - m
 Punch bowl & base and 6 cups - p 325
 powder m 40

BOWLS

Rose Show W 80
Imperial grape - m, clambroth
Pansy Spray - m, amber
Pansy Spray
Rose & Ruffles fluted - amber
Bellaire Goodwill tour - m
Ribbon Tie - amyt
Carnival Thistle - m
Peacock Tail - g
Heart & Vine - g 25⁵⁰
Chrysanthemum - m 20
Dragon & Lotus 8" footed - m, b
Diamond Ring 9" fluted - m
Strawberry - basketweave exterior - N - g 30 -
Peacock & Grape - 9" - b
Coin Dot - g
Three fruits - footed - basketweave
exterior - N - g, amyt
3 Stippled Rays - 9" - 10" - p,m,g
Rainbow - Waterlily exterior - 10½" -g
Lustre Rose - footed - m
Thistle & Lotus - 7¼" - m
Holly Carnival - cobalt, m, p
Scroll or Peacock Eye 8" - gold iridescence
amyt, p
Open Rose 8" - Rose & Ruffles - m
Zipper & Diamond Band 8" - m
Garland Rose - footed - m
Finecut & Roses footed - g
Wild Daisy & Lotus - footed - Fenton - b
Autumn Acorns - b
Peacock Tail 9" - 10" -g
Imperial Grape 10½" - g
Rayed Rainbow - Pappy in Ring base
exterior - N - amyt
Sailboat - 6" - Orangetree exterior - pastel m
Frosted Block (signed Made in USA) -w
Rose & Ruffles - pastel m
Feather & Hobstar - m

Holly Carnival 8" (Holly & Berry) - b
Shell & Wild Rose - open heart edge - footed -g
Three in One 9" fluted - smokey
Busy Lizzy 9" (Hattie) - smokey
Flowering Almond 6" - p
Scales - beads exterior (looped petals) - pastel m
Cherry wreath 9" - Orangetree exterior - cobalt
Holly Carnival (Holly & Berry) - p
Whirling Star 11" - m
Checkboard 5¼" - solid handle - m
Octagon 12" fluted -g 35
Strawberry 9" - N - p
Stippled Rays - 3 cornered - amyt
Loganberry Spray 6" - Opal. edge - aqua 45⁵⁰
Taffeta 9" - Floral exterior - m, opal
Embossed grape - m
Pansy Spray - Imperial arcs exterior - pastel m
Wild Daisy & Lotus - Fenton - m
Many Stars (Stars Rosetted) - g 45
Floral & Optic three footed - w
LaBelle Rose (Rose show) - w, p 80- p 80
Good luck bowl - horseshoe 9" 45^m, amyt. 45 p 70
Vintage grape 8" g, p, b
Daisy, Pinwheel & Cable 8" - 9"
Scalloped - w
Vintage 9" fluted - m
Daisy, Pinwheel & Cable 8" - 9" Fluted
bearded berry exterior -w
Drape 9" (nippon) - pastel blue
Looped petals 9" (Milk glass iridized)
marigold & milk gl.
Cosmos Variet 10" - 11" - m
Cherry 10" - N - p
Cherry 7" - 8" - N - p
Blackberry Wreath 8" Scalloped
Holly Carnival 6" - 7" Three Cornered Bowl
(Holly and Berry)
Sunflower 8½" - 3 spatula feet - caramel
Embossed Grape 6" -7" - p
La Belle Elaine 9½" fluted - g
Thumbprint in Block - m



Dolphin Compote 400

Peacock Eye - file exterior - m
 Chrysanthemum & Windmill 10½" - 3 footed - m
 Pond Lily & Poinsettia footed - m
 Heavy grape - p
 Petal & Fan 6" - p
 Ruffled - Diamond & Flowers exterior - peach
 Orangetree - bearded berry exterior - Fenton - m
 Peacock at Urn 8½" - Fenton - m
 Peacock at Urn 9" - Bearded berry exterior
 Fenton - amyt
 Captive Rose - g, b
 Panelled - peacock blue
 Cosmos 9-10" - m
 Bulls Eye & Fern - N - g

COMPOTES

Headdress - Curved Star (Indian Rose) - m
 Coin Dot - amyt 20
 Rayed - amyt 15
 Blackberry Bramble - g 15.00
 Taffeta - clear base - m
 Wreath of Roses - cobalt
 Orange Tree - clear base - m
 Starfish (fantasy) - pastel m
 Rose Wreath - m 27.50
 Stippled - m
 Taffeta - m
 Question Mark reverse - m
 Old Fashion Flag - amyt 37.50
 Bows and Thumbprint - miniature - m
 Coin Spot - 6" - 7" - peach
 Peacock at Urn - b 30
 Flowering Almond (Peacock Tail) - p
 Fantasy - 2 handled - p
 Hearts and Flowers - p 100
 Hearts and Flowers - top - m opal., - base - b 60.00
 Fantasy - 2 handled - m opal.
 Vintage - amyt 6.00 2.250

BERRY SETS & FRUIT BOWLS

Soda gold berry bowl w/ 4 sauces - m
 Dahlia berry bowl - large - w/ 5 sauces - m 100
 Panther footed berry bowl w/ 6 sauces
 Cherry Wreath banana bowl w/ 6 sauces - p
 Lustre Rose Orange bowl - footed 10"
 (small chip) - m
 Orange Tree Orange bowl - footed 10"
 (small chip) - m
 Open Rose 10" ftd. bowl w/ 3 sauces
 (roughness on one rose) - m
 Orange Tree ftd. Orange bowl - m
 Persian Medallion Orange bowl - G & C exterior
 3 ftd. - 10" - m
 Fenton's thistle banana bowl - m 45
 Peach & Pear banana bowl - m

HAT SHAPES

Blackberry hat - Fenton - basketweave exterior -
 cobalt
 Lacy edge - 2 sides turned up - Basketweave
 exterior - b
 French Knots - m 25
 Holly Carnival (Holly & Berry) - fluted - b
 Blackberry Spray - fluted - b
 Hatshape N - p
 Hatshape - 4" deep in metal basket holder - m
 Flowering Dill (Michigan Beauty) - crimped edge -
 m 20 20
 Loganberry Spray - m
 Lacy Edge - basketweave - pastel m
 Holly Carnival (Holly & Berry) - red 95



Panther Berry Set Book 1, Page 117

MUGS

- Orange Tree Variet - amberina ^{Am} 40
- Orange Tree Variet - shaving - cobalt blue, g, b 6110 CB 25 - 25-M 750
- Singing Birds N - cobalt blue, p, b 35
- Beaded Shell - w 400
- Stork and Rushes - m 750
- Robin (Wee Birdie) - shaving - m 1500
- Orange Tree Variet - m 15 6 25
- Vintage Banded - m 1250
- Fisherman - p 25
- Dandelion N - aqua. opal. 325

MISCELLANEOUS

- Dolphin compote - very rare - amyt
- Kittens toothpick (vase) - b 70
- 5 kitten bowls - 4 flutes - m 40 - 40 - 35
- Swan covered dish - base 7 3/4" long x 5 1/2" wide
Cover 7 1/2" long x 4" high - both 5 3/8" high
(Hartung 6-133) - m 135
- Sunflower pin tray (chipped on one point) - amyt 55
- Vintage grape fernery - amber
- Panelled Roses fernery - m
- Small grape fernery - cobalt
- Grape Delight nut dish - 6 footed (Hand 1-39) - p
- Cuspidor-flattened hob (Stippled Dot) - pastel green
- Cuspidor - Stippled Dot - m 10.0
- Imperial grape decanters - p, g, m P 35
- Golden wedding whiskey bottles
quart & pint - m
- 2 Captain's whiskey bottles - b
- Canada Dry ginger ale bottles - quart
& pint 1,00 EA
- 2 Flower frogs - g, m
- Bambi, Scotty, Pierre & My Lady powder boxes - m
- Feldman Bros. advertising piece - Lacey
edge basketweave - m
- Four Lily colonial epergne - green 270
- Straw hat, Checkerboard, Texas hat & Schenley
ash trays
- Swan Salts - pastel green
- Pig Banks - large & small - m
- Bell banks - m
- 2 Nuart light shades - signed - m
- Perfume bottle w/ stopper - 5 1/2" high - clear
- Cigarette box iridized - clear
- Bobèche - signed "Victrylite Candle Co., Oshkosh,
Wisc." - m
- Grape powder box - m

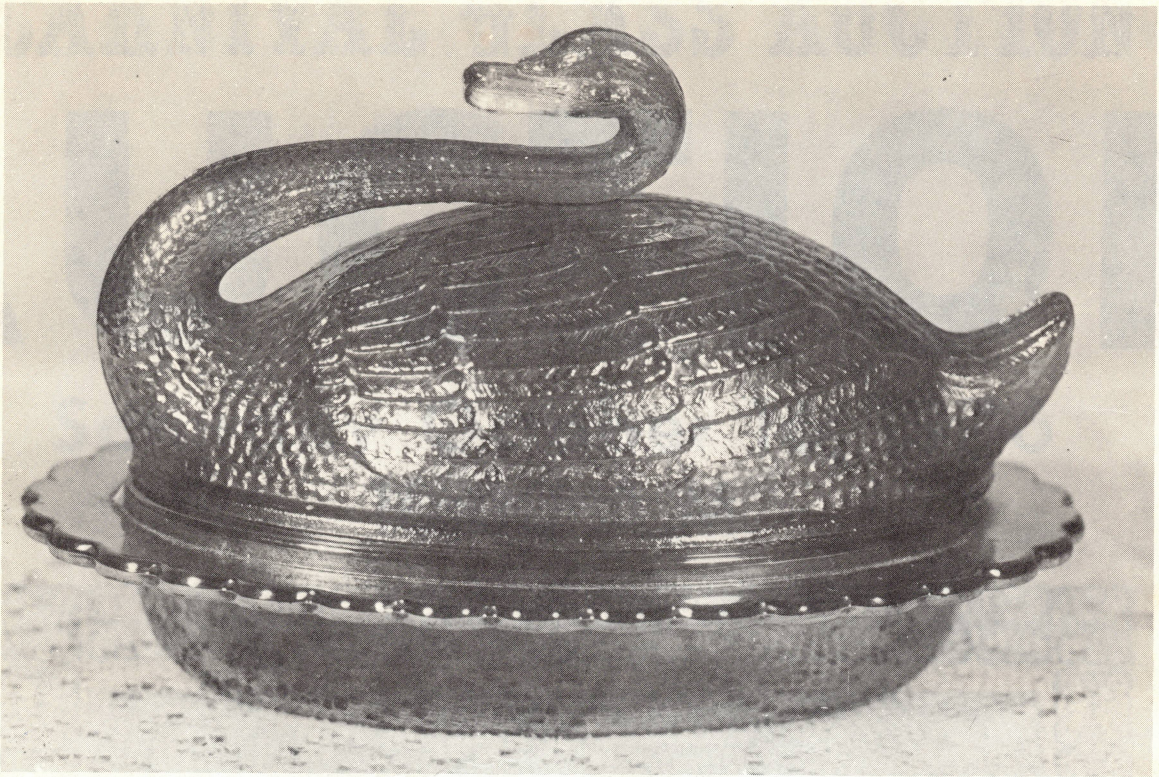
- Turn Along Linn P 34
- Poppy P 2750
- P Dawn P 17,50
- I Grape G 15
- Orange Tree B 18.00



Purple Poppy Show 525

- Late Lattice platter - 12" and cups - m
- 50 vases in all sizes, shapes, colors and
patterns including purple poppy show, ice blue
drape
- Rosebowl P 10 68
- Candy dishes
- Wines, goblets and champagnes
- Approx. 40 asst. tumblers - Acorn Burrs
Diamond Lace, Perfection, Oriental Poppy, etc.
- Baskets - asst. patterns and colors
- 11 Sweetmeats - asst. patterns & colors
- 10 Nappies - asst. patterns & colors
- 18 Asst. candlestick holders - white, marigold
- 3 Flute toothpicks - p, g, m

35 35 2750
Other items not listed




Large Covered Swan

NOTES

Tomb Floral + Grate B 15
 Maryland P 55
 Perfection P 95
 Lt Beads Rose Bow 30
 Tum Raspberry G 20
 Double Dough G 5
 Floral Grate W 45
 Chipew Flower Am 12.50
 BUTTERFLY + B M 7.50
 CONGOE Diamond 1B 15.0

WOODY

AUCTION  REAL ESTATE COMPANY

Rt. 1, Box 104
DOUGLASS, KANSAS 67039

First Class

1
4/78

Address Correction Requested